



**Package Contents**

- Broadband Router with 2 Phone Ports
- Power Adapter
- Setup Wizard CD-ROM with User Guide
- Network Cable
- Quick Installation
- Registration Information Card

# Broadband Router

with 2 Phone Ports

Quick Installation

**VoIP**  
Voice



Model No. RTP300

## 1 Connect the Router

There are two ways to configure the Router:

- Run the Setup CD-ROM - It is strongly recommended that you use the Setup CD-ROM. Insert the Setup CD-ROM into the CD-ROM drive, and follow the on-screen instructions.
- Use this Quick Installation guide - If you wish, you can use the Router's Web-based Utility. Proceed to Step 1 of this Quick Installation.

**A** Make sure that all of your hardware is powered off, including the Router, PCs, broadband modem.

**B** Connect your broadband modem's Ethernet cable to the Router's Internet port.

**C** Connect one end of an Ethernet network cable to one of the numbered ports on the back of the Router. Connect the other end to an Ethernet port on a network device, e.g., a PC, print server, or switch.

Repeat this step to connect more PCs or other network devices to the Router.

**D** Power on the broadband modem.



**E** Connect the included power adapter to the Router's Power port, and then plug the power adapter into an electrical outlet.

The Power LED on the front panel will light up as soon as the power adapter is connected properly.

**F** Power on the PC you wish to use to configure the Router.

**G** If necessary, disconnect the RJ-11 telephone cable of your telephone from the telephone wall jack. Then connect that end to the Router's **PHONE 1** port.

**H** If you have a second phone line, repeat step H to connect a telephone or fax machine to the Router's **PHONE 2** port.



**NOTE:** Make sure your telephone is set to its tone setting (not pulse).



**IMPORTANT:** Do not connect the Phone port to a telephone wall jack. Make sure you only connect a telephone or fax machine to the Phone port. Otherwise, the Router or the telephone wiring in your home or office may be damaged.

## 2 Configure the Router

In Step 2, you will need the setup instructions provided by your Internet Service Provider (ISP). If you do not have this information, then contact your ISP before proceeding.

The instructions from your ISP tell you how to set up your PC for Internet access. Because you are now using the Router to share Internet access among several computers, you will use the setup information to configure the Router instead of your PC.

**A** Open your PC's web browser. Enter **http://192.168.15.1** (the Router's default local IP address) in the web browser's *Address* field. Then press the **Enter** key.

**B** A screen will appear and ask you for a User Name and Password. Enter **admin** (the default) in the *User Name* and *Password* fields. (Later you should set a new password using the Administration tab's *Management* screen. This will help secure access to the Web-based Utility.)

Then click the **OK** button.

**NOTE:** Make sure your PC's Ethernet adapter is set to Obtain an IP address automatically. For more information, refer to Windows Help.



C The Router's Web-based Utility will appear with the *Basic Setup* screen showing.

D For the Internet Connection Type setting, three Internet connection types are offered through the drop-down menu. Depending on which connection type you select, the features available on the *Basic Setup* screen will differ. Proceed to the instructions for the connection type you are using.

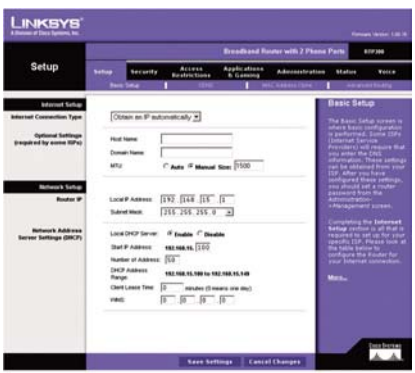
### 1 Obtain an IP Automatically (DHCP)

a If your ISP says that you are connecting through DHCP or a dynamic IP address from your ISP, then select **Obtain an IP automatically** as the Internet Connection Type.

b Click the **Save Settings** button.

### 2 Static IP

a If your ISP says that you are connecting through



Obtain an IP Automatically

a static or fixed IP address from your ISP, then select **Static IP** as the Internet Connection Type.

b Enter the IP Address, Subnet Mask, and Gateway Address provided by your ISP.

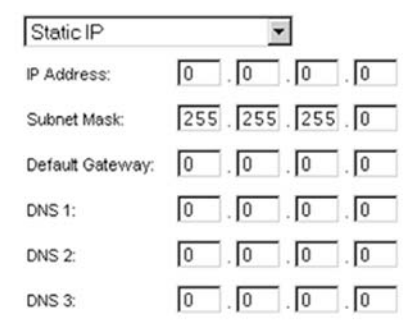
c In the *DNS 1-3* fields, enter the DNS address(es) provided by your ISP. You need to enter at least one DNS address.

d Click the **Save Settings** button.

### 3 PPPoE

a If your ISP says that you are connecting through PPPoE or if you normally enter a user name and password to access the Internet, then select **PPPoE** as the Internet Connection Type.

b Enter the User Name and Password provided by your ISP. (Also enter the Service Name, if required.)



Static IP



PPPoE

c Click the **Save Settings** button.

e Click the **Status** tab and then the **Router** tab. Click the **Connect** button to start the connection

f Power your cable or DSL modem off and back on again.

g Restart or power on your PCs so they can obtain the Router's new settings.

H To test the Router's settings, open your web browser from any computer. In the browser's *Address* field, enter [www.linksys.com/registration/](http://www.linksys.com/registration/) and press the **Enter** key.

**Congratulations! The installation of the Router is complete.**



H

**LINKSYS**<sup>®</sup>  
A Division of Cisco Systems, Inc.

For additional information or troubleshooting help, refer to the User Guide on the Setup CD-ROM. You can also visit our website for further support.

Website  
<http://www.linksys.com/support>

Linksys is a registered trademark or trademark of Cisco Systems, Inc. and/or its affiliates in the U.S. and certain other countries. Copyright © 2006 Cisco Systems, Inc. All rights reserved.