



Using the Cisco Navigation Bar Extension

This appendix explains how to install and use the Cisco Navigation Bar (NavBar) extension to Dreamweaver. This appendix includes the following:

- [Introduction, page D-1](#)
- [Creating a Navigation Bar, page D-1](#)
- [Installing the Navigation Bar Extension, page D-4](#)

Introduction

The Cisco Navigation Bar extension changes the behavior of the standard Dreamweaver navigation bar. With the extension, the current web page always displays the appropriate down-state button in the navigation bar. To accomplish this change, a JavaScript function `MM_nbIsActive(name)` determines if the passed image name should be shown in the down state.

The Cisco Navigation Bar extension is named `navbar.mxp` and is located in the `\install_dir\nwsp\webapp\assets` directory.

Creating a Navigation Bar



Note

If your Dreamweaver installation has not been extended for the Cisco Navigation Bar extension, you may need to install the extension for some of the following procedures. For installation directions, see the [Installing the Navigation Bar Extension, page D-4](#).

The manner in which you insert a navigation bar that uses the Cisco Navigation Bar extension varies depending on whether:

- It is a new JSP page.
- The JavaScript for the navigation bar is already on the JSP page itself.
- The JavaScript for the navigation bar is incorporated on the JSP page through an include directive specifying `navbar.js`.

The directions given in the following sections also apply if you want to add the navigation bar to a Dreamweaver template.

**Note**

After you create and insert a navigation bar that uses the Cisco Navigation Bar extension and edit the JavaScript, you cannot use Dreamweaver to modify the navigation bar (by clicking Navigation Bar from the Modify menu). Trying to modify a navigation in this way will corrupt the JavaScript code in the navigation bar's anchor tags (<a>).

New JSP Page

If the JSP page where you will insert the navigation bar is newly created (not an existing JSP page from a SESM Web Portal application), you can add a new navigation bar that uses the Cisco Navigation Bar extension by performing the following steps:

Step 1 Insert the navigation bar in the normal manner with Dreamweaver by selecting **Insert > Interactive Images > Navigation Bar**.

Step 2 In the created JavaScript, ensure that the MM_nbIsActive function is defined as follows:

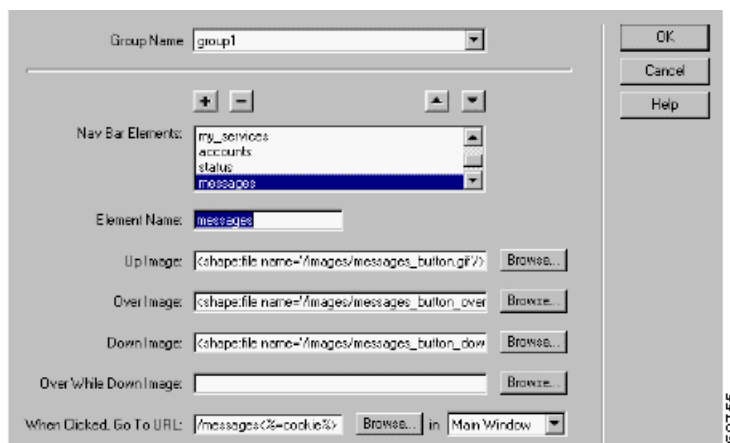
```
function MM_nbIsActive(name) { //v3.0
    return (name == '<%= selectedNavbarButton %>');
}
```

Step 3 Insert the following code above the <head> section of the JSP page where the navigation bar is used. The the navigation bar software uses the code to determine which button should be in the down state on a given page.

```
<% String selectedNavbarButton = "this_element"; %>
```

In the preceding code, *this_element* is the name of an element within the Dreamweaver navigation bar. Each button in the navigation bar has an element name. For example, in the Dreamweaver **Insert Navigation Bar** dialog box shown in [Figure D-1](#), *messages* is the element name.

Figure D-1 Navigation Bar Element Names



The string for `this_element` is different for each JSP page and corresponds to the element name for the page's button in the navigation bar. For example, in the NWSP Web Portal application, the element name of the button that links to the Messages web page is `messages`. In `messages.jsp`, the code would be:

```
<% String selectedNavbarButton = "messages"; %>
```

JSP Page with Existing JavaScript

If an existing JSP page in which you will insert the navigation bar already contains JavaScript for a navigation bar, Dreamweaver will not insert JavaScript for a new navigation bar. In this case, to add a new navigation bar that uses the Cisco Navigation Bar extension, perform the following steps:

-
- Step 1** Copy `navbar.js` from the `\install_dir\nwsp\webapp\decorators` directory into the document tree of the SESM Web Portal application. The `navbar.js` file contains the custom JavaScript functions that the navigation bar requires.
 - Step 2** In the JSP page, delete the JavaScript for the existing navigation bar.
 - Step 3** Insert the following code into the `<head>` section of the JSP page where the navigation bar is used. (If a JSP page is derived from a template that has the code, the code is automatically copied to the JSP page when the page is created.)

```
<script language="JavaScript">  
<%@ include file="/location/navbar.js" %>  
</script>
```

In the preceding code, `location` is the directory where `navbar.js` is located within the document tree of the Web Portal application. For example: `/decorators/navbar.js`.

- Step 4** In the `navbar.js` file, ensure that the `MM_nbIsActive` function is defined as follows:

```
function MM_nbIsActive(name) { //v3.0  
    return (name == '<%= selectedNavbarButton %>');  
}
```

- Step 5** Insert the following code above the `<head>` section of the JSP page where the navigation bar appears. The navigation bar software uses the code to determine which button should be in the down state on a given page.

```
<% String selectedNavbarButton = "this_element"; %>
```

For more information on step 5, see the [New JSP Page, page D-2](#).

JSP Page with Included JavaScript

If an existing JSP page where you will insert the navigation bar already has included `navbar.js` through the use of an include directive, Dreamweaver inserts the JavaScript for the new navigation bar. In this case, to add a new navigation bar that uses the Cisco Navigation Bar extension, perform the following steps:

Step 1 Delete the JavaScript that Dreamweaver added for the new navigation bar. (The same JavaScript code is contained in the `navbar.js` file.)

Step 2 Ensure that the `MM_nbIsActive` function in `navbar.js` is defined as follows:

```
function MM_nbIsActive(name) { //v3.0
    return (name == '<%= selectedNavbarButton %>');
}
```

Step 3 Ensure that the following code is inserted above the `<head>` section of the JSP page where the navigation bar appears. The navigation bar software uses the code to determine the button that should be in the down state on a given page.

```
<% String selectedNavbarButton = "this_element"; %>
```

For more information on step 3, see the [New JSP Page, page D-2](#).

Installing the Navigation Bar Extension

When you install the Cisco Navigation Bar extension, you will overwrite a number of Dreamweaver files that are used for creating a standard Dreamweaver navigation bar. Installing the Cisco Navigation Bar extension overwrites the following files:

- `\Configuration\Behaviors\Actions\Set Nav Bar Image.js`.
- `\Configuration\Commands\Insert Nav Bar.htm`.
- `\Configuration\Commands\Modify Nav Bar.htm`.
- `\Configuration\Commands\NavigationBar.htm`.
- `\Configuration\Objects\Common\NavigationBar.js`.
- `\Configuration\Configuration\Shared\MM\Scripts\navBar.js`.

The files are located below the directory where Dreamweaver is located (for example, the `C:\Program Files\Macromedia\Dreamweaver MX` directory).



Note

If you want to be able to restore an installation of Dreamweaver so that a standard navigation bar can be created, make backup copies of the preceding files under a name like `filename.ORIGINAL` before you install the Cisco Navigation Bar extension.

To install the Cisco Navigation Bar extension, do the following:

-
- Step 1** If you have not already done so, install the Macromedia Extension Manager software, which can be downloaded from the Macromedia website: www.macromedia.com.
- Step 2** Copy the Cisco Navigation Bar extension package file (navbar.mxp) from the *install_dir\nwsp\webapp\assets* to the Extensions directory, which is located below the directory where Dreamweaver is located. For example:
- C:\Program Files\Macromedia\Dreamweaver MX\Extensions
- Step 3** Start Macromedia Extension Manager, select **Extension Manager File > Install Extension** from the , and install the Cisco Navigation Bar extension (Cisco NavBar modification).
-

