



# Cisco MGC Node Manager System Administration

This chapter is intended for system administrators. After a short overview of Cisco MNM system administration, this chapter provides information on common system administration tasks.

## Related Topics

[Appendix C, “Troubleshooting Cisco MGC Node Manager”](#)

System administration procedures related to Cisco MGC Node Manager features are described in the relevant chapters. For example, system administration related to performance management is described in “Managing the Performance of Cisco MGC Node Manager Devices,” [“System Administration for Performance Management”](#) section on page 7-15.



## Note

There is no special system administration related to implementing a secure shell (SSH) security policy. You define a component’s security policy during deployment (see [Chapter 5, “Deploying Your Network in Cisco MGC Node Manager”](#)) and change it in the Accounts dialog box (see [Chapter 8, “Other Network Management Tasks,” “Viewing or Modifying Account and SNMP Information”](#) section on page 8-6). To enable SSH on Cisco MGC Node Manager, see the *Installation Guide* at [http://www.cisco.com/en/US/products/sw/netmgtsw/ps2272/products\\_user\\_guide\\_list.html](http://www.cisco.com/en/US/products/sw/netmgtsw/ps2272/products_user_guide_list.html).

## Overview of Cisco MNM System Administration

The Cisco MNM system administrator typically performs the following tasks:

- In initial implementation of Cisco MNM:
  - Installation of the software, including planning the necessary hardware for your site. This is described in the *Installation Guide*.
  - Configuration of the managed network devices for management by Cisco MNM. This is described in [Chapter 2, “Configuring Network Devices for Management.”](#)
  - Setting up system security. This is described in [Chapter 4, “Setting Up Cisco MGC Node Manager Security.”](#)
- In day-to-day network management:
  - [Stopping and Starting Cisco MGC Node Devices, page 9-2](#)
  - [Backing Up and Restoring the Cisco MGC Node Manager Database, page 9-3](#)

**Note**

The Network Operations Center (NOC) operator uses Cisco MGC Node Manager to monitor the network and respond to events and alarms. In this document, this role is called the user.

## Stopping and Starting Cisco MGC Node Devices

From Cisco MGC Node Manager, a system administrator can reboot, shut down, or restart the Cisco MGC host, HSI server, BAMS, Cisco SLT, or Cisco LAN switch.

Use the following procedure to stop, start, or reboot a device:

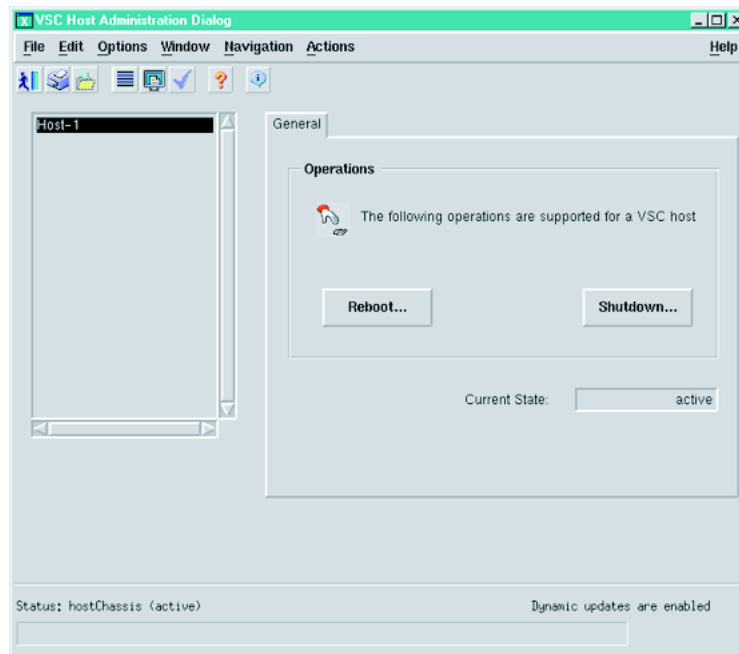
**Step 1** In the Map Viewer, right-click the desired device, and choose **Tools > Administration Tool**.

**Note**

You must have system administrator privileges to access the Administration Tool.

**Step 2** The Administration dialog box for the selected device appears ([Figure 9-1](#)), showing the current state of the device.

**Figure 9-1 Administration Dialog Box Example**



**Step 3** Do one of the following:

- To reboot, click **Reboot**.
- To shut down, click **Shutdown**.

You are asked to confirm the operation

**Step 4** Click **Yes** to proceed.

Cisco MGC Node Manager executes the operation.

- Step 5** When you are done, press **Alt-F4** or choose **File > Close** to close the dialog box.
- 

## Backing Up and Restoring the Cisco MGC Node Manager Database

Cisco MGC Node Manager maintains information about your network in database and configuration files that are together referred to as the Cisco MGC Node Manager database. Use the backup and restore features of the Cisco EMF to back up or restore the Cisco MGC Node Manager database. For details, refer to the *Installation and Configuration Guide* for your release of Cisco EMF, available at the following web site:

[http://www.cisco.com/en/US/products/sw/netmgtsw/ps829/products\\_installation\\_and\\_configuration\\_guides\\_list.html](http://www.cisco.com/en/US/products/sw/netmgtsw/ps829/products_installation_and_configuration_guides_list.html)

