



## Provisioning MPLS VPN Cable Services

---

This chapter describes how to provision MPLS VPN cable in IP Solutions Center (ISC). This chapter contains the following sections:

- [Overview of MPLS VPN Cable, page 8-1](#)
- [Provisioning Cable Services in ISC, page 8-6](#)
- [Creating the Service Requests, page 8-6](#)

### Overview of MPLS VPN Cable

Using MPLS VPN technology, service providers can create scalable and efficient private networks using a shared Hybrid Fiber Coaxial (HFC) network and Internet Protocol (IP) infrastructure. The cable MPLS VPN network consists of the following two major elements:

- The Multiple Service Operator (MSO) or cable company that owns the physical infrastructure and builds VPNs for the Internet Service Providers (ISPs) to move traffic over the cable and IP backbone.
- ISPs that use the HFC network and IP infrastructure to supply Internet service to cable customers.

### Benefits of Cable MPLS VPNs

Provisioning cable services with MPLS VPNs provides the following benefits:

- MPLS VPNs give cable MSOs and ISPs a manageable way of supporting multiple access to a cable plant.  
Service providers can create scalable and efficient VPNs across the core of their networks. MPLS VPNs provide systems support scalability in cable transport infrastructure and management.
- Each ISP can support Internet access services from a subscriber's PC through an MSO's physical cable plant to their networks.
- MPLS VPNs allow MSOs to deliver value-added services through an ISP, and thus, deliver connectivity to a wider set of potential customers.  
MSOs can partner with ISPs to deliver multiple services from multiple ISPs and add value within the MSO's own network using VPN technology.
- Subscribers can select combinations of services from various service providers.

- The Cisco IOS MPLS VPN cable feature sets build on Cable Modem Termination Server (CMTS) and DOCSIS 1.0 extensions to ensure services are reliably and optimally delivered over the cable plant.  
MPLS VPN provides systems support domain selection, authentication per subscriber, selection of QoS, policy-based routing, and ability to reach behind the cable modem to subscriber end-devices for QoS and billing, while preventing session-spoofing.
- MPLS VPN technology ensures both secure access across the shared cable infrastructure and service integrity.

## The Cable MPLS VPN Network

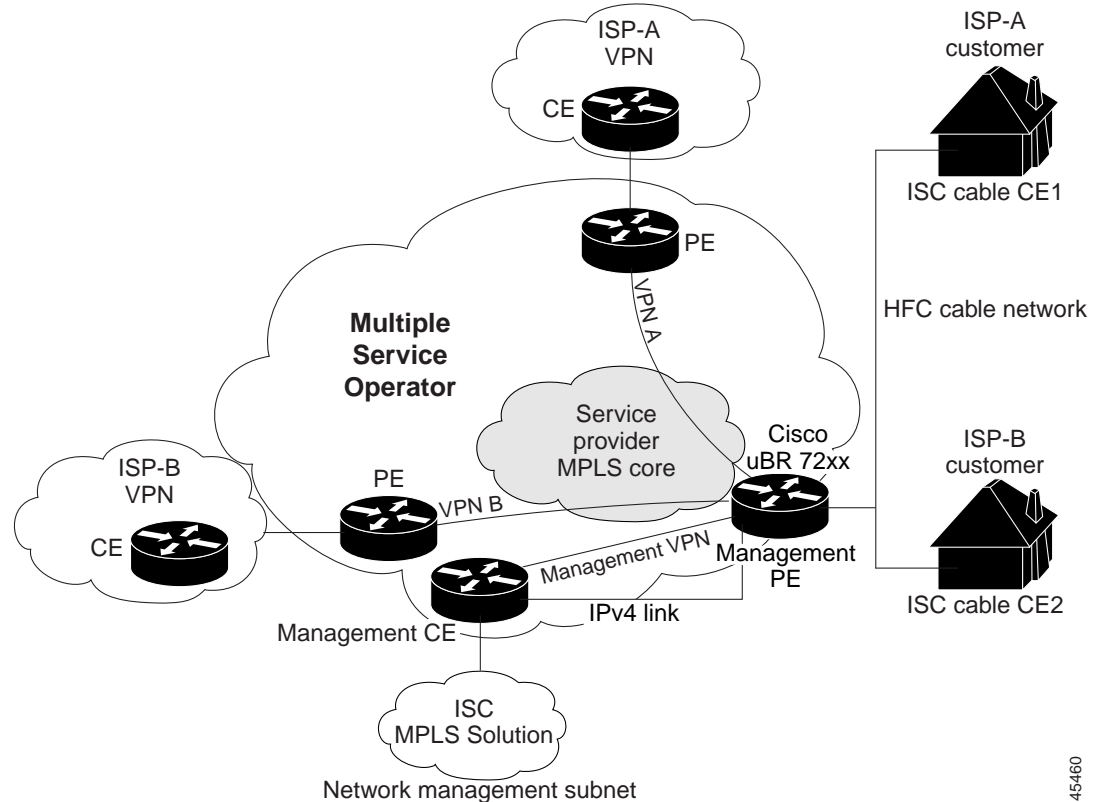
As shown in [Figure 8-1](#), each ISP moves traffic to and from a subscriber's PC, through the MSO's physical network infrastructure, to the ISP's network. MPLS VPNs, created in Layer 3, provide privacy and security by constraining the distribution of VPN routes only to the routers that belong to its network. Thus, each ISP's VPN is insulated from other ISPs that use the same MSO infrastructure.

In the MPLS-based cable scheme, a VPN is a private network built over a shared cable plant and MPLS-core backbone. The public network is the shared cable plant or backbone connection points. A cable plant can support Internet access services and carry traffic for an MSO and its subscribers, as well as for multiple Internet Service Providers (ISPs) and their subscribers.

An MPLS VPN assigns a unique VPN Routing/Forwarding (VRF) instance to each VPN. A VRF instance consists of an IP routing table, a derived forwarding table, a set of interfaces that use the forwarding table, and a set of rules and routing protocols that determine the contents of the forwarding table.

Each PE router maintains one or more VRF tables. If a packet arrives directly through an interface associated with a particular VRF, the PE looks up a packet's IP destination address in the appropriate VRF table. MPLS VPNs use a combination of BGP and IP address resolution to ensure security.

Figure 8-1 Example of an MPLS VPN Cable Network



45460

The routers in the cable network are as follows:

- **Provider (P) router**—Routers in the MPLS core of the service provider network. P routers run MPLS switching, and do not attach VPN labels (MPLS labels in each route assigned by the PE router) to routed packets. VPN labels direct data packets to the correct egress router.
- **Provider Edge (PE) router**—A router that attaches the VPN label to incoming packets based on the interface or subinterface on which they are received. A PE router attaches directly to a CE router. In the MPLS-VPN approach, each Cisco uBR72xx series router acts as a PE router.
- **Customer (C) router**—A router in the ISP or enterprise network.
- **Customer Edge (CE) router**—Edge router on the ISP's network that connects to the PE router on the MSO's network. A CE router must interface with a PE router.
- **Management CE (MCE) router**—The MCE *emulates* the role of a customer edge router (CE), but the MCE is in provider space and serves as a network operations center gateway router. The network management subnet is connected to the Management CE (MCE). The MCE is part of a management site as defined in the ISC.
- **Management PE (MPE) router**—The MPE *emulates* the role of a PE in the provider core network. The MPE connects the MCE to the provider core network. An MPE can have a dual role as both a PE and the MPE.

The shared cable plant supports Internet connectivity from ISP A to its subscribers and from ISP B to its subscribers.

## Management VPN in the Cable Network

The MPLS network has a unique VPN that exclusively manages the MSOs devices called the *management VPN*. It contains servers and devices that other VPNs can access. The management VPN connects the Management CE (MCE) router and the management subnet to the MSO PE router (a uBr72xx router or equivalent). ISC and the management servers, such as Dynamic Host Configuration Protocol (DHCP), Cisco Network Registrar (CNR) Time of Day (ToD) are part of the management subnet and are within the management VPN for ISP connectivity.

As shown in [Figure 8-1](#), the management VPN is comprised of the network management subnet (where the ISC workstation resides), which is directly connected to the Management CE (MCE). The management VPN is a special VPN between the MCE and the cable VPN gateway. The cable VPN gateway is usually a Cisco uBR 72xx router that functions as both a regular PE and a Management PE. Notice that there is also a parallel IPv4 link between the MCE and the MPE.

## Cable VPN Configuration Overview

Cable VPN configuration involves the following:

- An MSO domain that requires a direct peering link to each enterprise network (ISP), provisioning servers for residential and commercial subscribers, and dynamic DNS for commercial users. The MSO manages cable interface IP addressing, Data Over Cable Service Interface Specifications (DOCSIS) provisioning, cable modem hostnames, routing modifications, privilege levels, and usernames and passwords.
- An ISP or enterprise domain that includes the DHCP server for subscriber or telecommuter host devices, enterprise gateway within the MSO address space, and static routes back to the telecommuter subnets.



### Note

Cisco recommends that the MSO assign all addresses to the end user devices and gateway interfaces. The MSO can also use split management to let the ISP configure tunnels and security.

To configure MPLS VPNs for cable services, the MSO must configure the following:

- *Cable Modem Termination System (CMTS)*

The CMTS is usually a Cisco uBR72xx series router. The MSO must configure Cisco uBR72xx series routers that serve the ISP.

- *PE routers*

The MSO must configure PE routers that connect to the ISP as PEs in the VPN.



### Tip

When configuring MPLS VPNs for cable services, you must configure the cable maintenance subinterface on the PE. The cable maintenance interface is the means by which the cable device retrieves its own IP address. For this reason, the maintenance subinterface must be configured before cable services provisioning can take place.

- *CE routers*
- *P routers*
- *One VPN per ISP*
- *DOCSIS servers for all cable modem customers*

The MSO must attach DOCSIS servers to the management VPN and make them visible to the network.

The MSO must determine the *primary IP address range*. The primary IP address range is the MSO's address range for all cable modems that belong to the ISP subscribers.

The ISP must determine the *secondary IP address range*. The secondary IP address is the ISP's address range for its subscriber PCs.

To reduce security breaches and differentiate DHCP requests from cable modems in VPNs or under specific ISP management, MSOs can use the **cable helper-address** command in Cisco IOS software. The MSO can specify the host IP address to be accessible only in the ISP's VPN. This lets the ISP use its DHCP server to allocate IP addresses. Cable modem IP address must be accessible from the management VPN.

In ISC, you specify the maintenance helper address and the host helper address and the secondary addresses for the cable subinterface.

## Cable VPN Interfaces and Subinterfaces

In the cable subscriber environment, several thousand subscribers share a single physical interface. Configurations with multiple logical subinterfaces are a vital part of the MPLS VPN network over cable. You can configure multiple subinterfaces and associate a specific VRF with each subinterface. You can split a single physical interface (the cable plant) into multiple subinterfaces, where each subinterface is associated with a specific VRF. Each ISP requires access on a physical interface and is given its own subinterface. The MSO administrator can define subinterfaces on a cable physical interface and assign Layer 3 configurations to each subinterface.

The MPLS VPN approach of creating VPNs for individual ISPs or customers requires subinterfaces to be configured on the cable interface. One subinterface is required for each ISP. The subinterfaces are tied to the VPN Routing/Forwarding (VRF) tables for their respective ISPs.

You must create the *maintenance subinterface* on the cable interface and tie it to the management VPN. The maintenance interface is for the ISP's use, and it is used for VPN connectivity, as well as the management VPN using an extranet between the ISP and the management VPN.

ISC automatically selects the subinterface number based on the VRF. If a subinterface that is associated with the current VRF does not yet exist, ISC creates a subinterface and assigns it to the correct VRF. The subinterface number is incremented to 1 greater than the largest subinterface currently assigned for the selected cable interface.

The network management subnet (which includes the CNR, ToD, and ISC) can reply to the cable modem because the management VPN allows connectivity for one filtered route from the ISP's VPN to the Management CE (MCE). Similarly, in order to forward the management requests (such as DHCP renewal to CNR), the ISP VPN must import a route to the MCE in the management VPN.

Cisco uBR7200 series software supports the definition of logical network layer interfaces over a cable physical interface. The system supports subinterface creation on a physical cable interface.

Subinterfaces allow traffic to be differentiated on a single physical interface and associated with multiple VPNs. Each ISP requires access on a physical interface and is given its own subinterface. Using each subinterface associated with a specific VPN (and therefore, ISP) subscribers connect to a logical subinterface, which reflects the ISP that provides their subscribed services. Once properly configured, subscriber traffic enters the appropriate subinterface and VPN.

# Provisioning Cable Services in ISC

The tasks you must complete to provision cable services in ISC are as follows:

- Add the PE that has cable interfaces to the appropriate Region.
- Generate a service request to provision the cable maintenance interface on the PE.
- Generate a second service request to provision the MPLS-based cable service. You must generate this cable service request for each VPN.

When using the ISC to provision cable services, there are no CEs in the same sense there are when provisioning a standard MPLS VPN. Thus, you must use a PE-Only (NOCE) policy or create a cable policy with no CE.

## Creating the Service Requests

This section contains the following subsections:

- [Creating a Cable Subinterface Service Request, page 8-6](#)
- [Creating a Cable Link Service Request, page 8-11](#)

## Creating a Cable Subinterface Service Request

The cable maintenance subinterface on the PE is the means by which the cable device retrieves its own IP address. For this reason, the maintenance subinterface must be configured before provisioning cable services.

To create a cable subinterface service request, follow these steps:

- 
- Step 1** Start up and log into ISC.
- a. From the Welcome to ISC window, choose **Service Inventory**.
  - b. From the Service Inventory window, choose **Inventory and Connection Manager**.
  - c. From the Inventory and Connection Manager window, choose **Service Requests**.

The Service Requests dialog box appears.

- Step 2** Click **Create**.

A drop-down list is displayed, showing the types of service requests you can create.

- Step 3** Choose **MPLS VPN**.

The Select MPLS Policy dialog box appears (see [Figure 8-2](#)).

This dialog box displays the list of all the MPLS service policies that have been defined in ISC.

Figure 8-2 Selecting the Cable Maintenance Policy for the Subinterface

**Select MPLS Policy**

Category: Any Matching: \* Find

Showing 1-3 of 3 records

#	<input type="checkbox"/>	Name	Owner
1.	<input type="checkbox"/>	Cable	Global
2.	<input checked="" type="checkbox"/>	Cable_Maintenance	Global
3.	<input type="checkbox"/>	mgmt_vpn	Customer - Provider_A_Mgmt

Rows per page: 10

OK Cancel

95431

**Step 4** Select the check box for the PE-Only policy (*Cable Maintenance* in the example above) policy, and then click **OK**.

The MPLS Service Request Editor appears (see [Figure 8-3](#)).

Figure 8-3 MPLS Service Request Editor

**MPLS Service Request Editor**

Job ID: SR ID: SR State:

Policy: Cable\_Maintenance

Description:

Showing 0 of 0 records

#	<input checked="" type="checkbox"/>	Link ID	CLE	CLE Interface	PE	PE Interface	Link Attribute	Logical Link
---	-------------------------------------	---------	-----	---------------	----	--------------	----------------	--------------

Rows per page: 10

Add Link Delete Link Save Cancel

95438

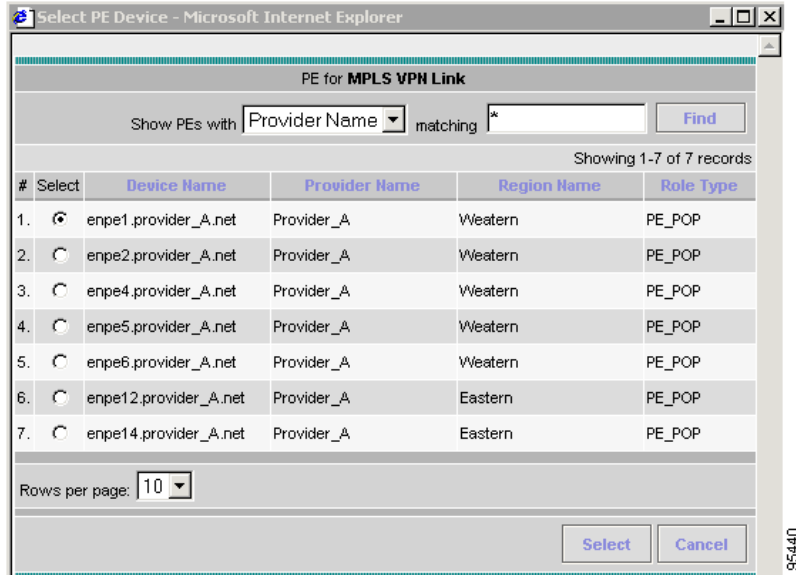
**Step 5** Click **Add Link**.

The MPLS Service Request Editor now displays a set of fields. Notice that the *Select PE* field is enabled. Specifying the PE for the link is the first task required to define the link for this service.

**Step 6** *PE*: Click **Select PE**.

The Select PE Device dialog box is displayed (see [Figure 8-4](#)).

Figure 8-4 Selecting the PE for the MPLS Link

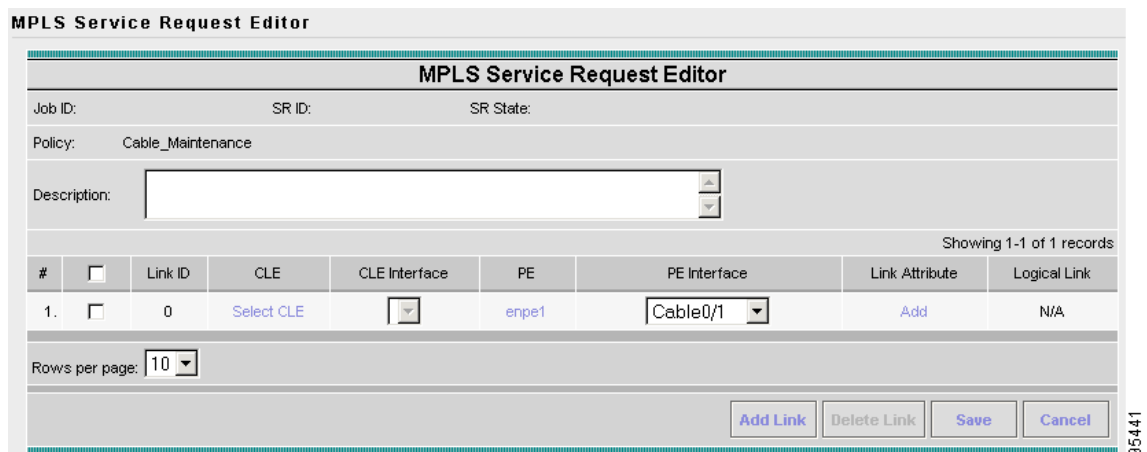


**Step 7** In the Select column, select the name of the PE for the MPLS link, then click **Select**.

You return to the Service Request Editor screen, where the name of the selected PE is now displayed in the PE column.

*PE Interface:* Select the PE interface from the drop-down list (see Figure 8-5).

Figure 8-5 PE and PE Interface Fields Defined



**Step 8** In the Select column, select the name of the PE for the MPLS link, then click **Select**.

You return to the Service Request Editor screen, where the name of the selected PE is now displayed in the PE column.

**Step 9** *PE Interface:* Select the PE interface from the drop-down list.

Only the major interface names are available for you to select. ISC assigns the appropriate subinterface number for each VPN.

The Link Attribute **Add** option is now enabled.

**Step 10** In the Link Attribute column, select **Add**.

The MPLS Link Attribute Editor is displayed, showing the fields for the interface parameters (see [Figure 8-6](#)).

**Figure 8-6** Specifying the MPLS Link Interface Attributes

Attribute	Value
<b>PE Information</b>	
PE	enpe1
Interface Name *	Cable0/1
Interface Description:	maintenance subinterfa
Shutdown Interface:	<input type="checkbox"/>
Cable Maintenance Interface:	<input checked="" type="checkbox"/>
Cable Helper Addresses:	<input type="button" value="Edit"/>

**Step 11** Enter a name in the Interface Description field.

**Step 12** Select the check box for the Cable Maintenance Interface, then click **Edit**.

The Cable Helper Addresses window is displayed (see [Figure 8-7](#)).

**Figure 8-7** Cable Helper Addresses

Select	IP Address (a.b.c.d)	IP Type
<input type="checkbox"/>	209.165.100.1	Both

**Step 13** Enter an **IP address** in the IP Address field and select **Both** for IP Type.

**Step 14** Select **OK**.

The MPLS Link Attribute Editor reappears.

**Step 15** Select **Next**.

The MPLS Link Attribute Editor - IP Address Scheme appears (see [Figure 8-8](#)).

**Figure 8-8** Specifying the MPLS Link IP Address Attributes

Attribute	Value
<b>PE-CE Interface Addresses/Mask</b>	
IP Numbering Scheme:	IP Numbered
PE Interface Address/Mask *	10.1.1.1/24 (a.b.c.d/e)

- Step 16** Edit any IP address scheme values that need to be modified for this particular link, then click **Next**. The MPLS Link Attribute Editor for Routing Information appears (see [Figure 8-9](#)).

**Figure 8-9** Specifying the MPLS Link Routing Protocol Attributes

Attribute	Value
<b>PE-CE Routing Information</b>	
Routing Protocol	NONE
Redistribute Static (BGP only):	<input type="checkbox"/>
Redistribute Connected (BGP only):	<input type="checkbox"/>

The following routing protocol options are supported:

- None
- Static
- RIP

Because the service policy used for this service specified the routing protocol as editable, you can change the routing protocol for this service request as needed.

- Step 17** Edit any routing protocol values that need to be modified for this particular link, then click **Next**. The MPLS Link Attribute Editor for the VRF and VPN attributes appears (see [Figure 8-10](#)).

**Figure 8-10** Specifying the MPLS Link VRF and VPN Attributes

Attribute	Value				
<b>VRF Information</b>					
Export Map:					
Import Map:					
Maximum Routes:	(1-4294967295)				
Maximum Route Threshold *:	80 (1-100)				
VRF Description:					
Allocate new route distinguisher:	<input type="checkbox"/>				
VRF And RD Overwrite	<input type="checkbox"/>				
Join the management VPN:	<input checked="" type="checkbox"/>				
<b>VPN Selection</b>					
PE VPN Membership *:					
Select	Customer	VPN	Provider	CERC	Is Hub
<input type="checkbox"/>	Provider_A_Mgmt	provider_maintenance	Provider_A	Default	<input type="checkbox"/>

The field values displayed in this dialog box reflect the values specified in the service policy associated with this service.

- Step 18** Select the check box for Join the Management VPN.
- Step 19** Edit any VRF and VPN values that need to be modified for this particular link, then click **Finish**. You return to the MPLS Service Request Editor.



**Note** You can define multiple links in this service request.

- Step 20** To save your work on this first link in the service request, click **Save**.  
You return to the Service Requests dialog box, where the information for the link you just defined is now displayed.

## Creating a Cable Link Service Request

To create a Cable Link service request, follow these steps:

- Step 1** Start up and log into ISC.
- Step 2** Choose **Service Inventory > Inventory and Connection Manager > Service Requests**.  
The Service Requests dialog box appears.
- Step 3** To start the process to create a new service, click **Create**.  
A drop-down list is displayed, showing the types of service requests you can create.
- Step 4** Choose **MPLS VPN**.  
The Select MPLS Policy dialog box appears (see [Figure 8-11](#)).  
This dialog box displays the list of all the MPLS service policies that have been defined in ISC.

**Figure 8-11** Selecting the Cable Link Policy for This Service

**Select MPLS Policy**

Category: Any Matching: \*

Showing 1-3 of 3 records

#	<input type="checkbox"/>	Name	Owner
1.	<input checked="" type="checkbox"/>	Cable	Global
2.	<input type="checkbox"/>	Cable_Maintenance	Global
3.	<input type="checkbox"/>	mgmt_vpn	Customer - Provider_A_Mgmt

Rows per page: 10

- Step 5** Select the check box for the policy of choice, then click **OK**.
- Step 6** The MPLS Service Request Editor appears. Click **Add Link**.

The MPLS Service Request Editor now displays a set of fields, as shown in [Figure 8-12](#). Note that in the PE column, the **Select PE** option is now enabled.

Figure 8-12 MPLS Service Request Editor

**MPLS Service Request Editor**

Job ID:                      SR ID:                      SR State:

Policy:      Cable

Description:

Showing 1-1 of 1 records

#	<input type="checkbox"/>	Link ID	CLE	CLE Interface	PE	PE Interface	Link Attribute	Logical Link
1.	<input type="checkbox"/>	0	Select CLE	<input type="text"/>	Select PE	<input type="text"/>	Add	N/A

Rows per page:

95424

**Step 7**    *PE*: Click **Select PE**.

The Select PE Device dialog box is displayed (see [Figure 8-13](#)).

Figure 8-13 Selecting the PE for the MPLS Link

**PE for MPLS VPN Link**

Show PEs with  matching

Showing 1-7 of 7 records

#	Select	Device Name	Provider Name	Region Name	Role Type
1.	<input checked="" type="radio"/>	enpe1.provider_A.net	Provider_A	Weatern	PE_POP
2.	<input type="radio"/>	enpe2.provider_A.net	Provider_A	Weatern	PE_POP
3.	<input type="radio"/>	enpe4.provider_A.net	Provider_A	Weatern	PE_POP
4.	<input type="radio"/>	enpe5.provider_A.net	Provider_A	Weatern	PE_POP
5.	<input type="radio"/>	enpe6.provider_A.net	Provider_A	Weatern	PE_POP
6.	<input type="radio"/>	enpe12.provider_A.net	Provider_A	Eastern	PE_POP
7.	<input type="radio"/>	enpe14.provider_A.net	Provider_A	Eastern	PE_POP

Rows per page:

95425

**Step 8**    In the Select column, select the name of the PE for the MPLS link, then click **Select**.

You return to the Service Request Editor screen, where the name of the selected PE is now displayed in the PE column.

**Step 9**    *PE Interface*: Select the PE interface from the drop-down list (see [Figure 8-14](#)).

Figure 8-14 PE and PE Interface Fields Defined

#	<input type="checkbox"/>	Link ID	CLE	CLE Interface	PE	PE Interface	Link Attribute	Logical Link
1.	<input type="checkbox"/>	0	Select CLE	<input type="text"/>	enpe1	Cable0/1	Add	N/A

Rows per page: 10

Add Link Delete Link Save Cancel

Note that the Link Attribute **Add** option is now enabled.

**Step 10** In the Link Attribute column, select **Add**.

The MPLS Link Attribute Editor is displayed, showing the fields for the interface parameters (see Figure 8-15).

Figure 8-15 Specifying the MPLS Link Interface Attributes

Attribute	Value
<b>PE Information</b>	
PE	enpe1
Interface Name *	Cable0/1
Interface Description:	for ISP_1
Shutdown Interface:	<input type="checkbox"/>
Cable Maintenance Interface:	<input type="checkbox"/>
Cable Helper Addresses:	Edit
Secondary Addresses:	Edit

Note: \* - Required Field



**Note** Do not check the box for Cable Maintenance Interface.

**Step 11** Edit any interface values that need to be modified for this particular link, then click **Edit**. The Cable Helper Addresses window appears (see Figure 8-16).

Figure 8-16 Cable Helper Addresses

Select	IP Address (a.b.c.d)	IP Type

Add Delete OK Cancel

**Step 12** To edit the Host or Cable Modem Helper Addresses, click **OK**. The Cable Helper Addresses dialog box appears (see Figure 8-17).

Figure 8-17 Cable Helper Addresses

Select	IP Address (a.b.c.d)	IP Type
<input type="checkbox"/>	209.165.200.40	Modem

Buttons: Add, Delete, OK, Cancel

95428

Step 13 Enter an IP address in the IP Address Field and select Modem or Host for IP Type.

Step 14 Select **OK**.

The Cable Secondary Addresses dialog box appears (see Figure 8-18).

Figure 8-18 Cable Secondary Addresses

Select	Ip Address/Mask (a.b.c.d/e)
<input type="checkbox"/>	10.10.1.2/24

Buttons: Add, Delete, OK, Cancel

Step 15 Enter an IP address in the IP address/Mask field and click **OK**.

The MPLS Link Attribute Editor for the IP Address Scheme appears (see Figure 8-19).

Figure 8-19 Specifying the MPLS Link IP Address Attributes

Attribute	Value
<b>PE-CE Interface Addresses/Mask</b>	
IP Numbering Scheme:	IP Numbered
PE Interface Address/Mask*:	10.1.3.1/24 (a.b.c.d/e)

95432

Step 16 Edit any IP address scheme values that need to be modified for this particular link, then click **Next**.

The MPLS Link Attribute Editor for Routing Information appears (see Figure 8-20)

Figure 8-20 Specifying the MPLS Link Routing Protocol Attributes

Attribute	Value
<b>PE-CE Routing Information</b>	
Routing Protocol	NONE
Redistribute Static (BGP only):	<input type="checkbox"/>
Redistribute Connected (BGP only):	<input type="checkbox"/>

95433

- Step 17** Edit any routing protocol values that need to be modified for this particular link, then click **Next**. The MPLS Link Attribute Editor for the VRF and VPN attributes appears (see [Figure 8-21](#)).

**Figure 8-21** Specifying the MPLS Link VRF and VPN Attributes

Attribute	Value
<b>VRF Information</b>	
Export Map:	
Import Map:	
Maximum Routes:	(1-4294967295)
Maximum Route Threshold *:	80 (1-100)
VRF Description:	
Allocate new route distinguisher:	<input type="checkbox"/>
VRF And RD Overwrite:	<input type="checkbox"/>
Join the management VPN:	<input checked="" type="checkbox"/>
<b>VPN Selection</b>	
PE VPN Membership *:	
Select	Customer    VPN    Provider    CERC    Is Hub
<input type="button" value="Add"/> <input type="button" value="Delete"/>	

The field values displayed in this dialog box reflect the values specified in the service policy associated with this service.

- Step 18** Select the check box for Join the Management VPN.
- Step 19** Edit any VRF and VPN values that need to be modified for this particular link, then click **Add**. The Select CERCs/VPN dialog box appears.

**Figure 8-22** Select CERCs

#	Customer	VPN	Provider	CERC	Topology
1.	ISP_1	isp_1	Provider_A	Default	Hub and Spoke

- Step 20** Select the customer name and VPN.
- Step 21** Choose Join as Spoke, then click Done. The MPLS Link Attribute Editor for the VRF and VPN attributes appears (see [Figure 8-23](#)).

Figure 8-23 Specifying the MPLS Link VRF and VPN Attributes

**MPLS Link Attribute Editor - VRF and VPN**

Attribute	Value				
<b>VRF Information</b>					
Export Map:	<input type="text"/>				
Import Map:	<input type="text"/>				
Maximum Routes:	<input type="text"/> (1-4294967295)				
Maximum Route Threshold *:	<input type="text"/> 80 (1-100)				
VRF Description:	<input type="text"/>				
Allocate new route distinguisher:	<input type="checkbox"/>				
VRF And RD Overwrite	<input type="checkbox"/>				
Join the management VPN:	<input checked="" type="checkbox"/>				
<b>VPN Selection</b>					
PE VPN Membership *:					
Select	Customer	VPN	Provider	CERC	Is Hub
<input type="checkbox"/>	ISP_1	isp_1	Provider_A	Default	<input type="checkbox"/>

95436

- Step 22** Select the check box for Join the Management VPN.
- Step 23** Edit any VRF and VPN values that need to be modified for this particular link, then click **Next**.  
You return to the MPLS Service Request Editor.



**Note** You can define multiple links in this service request.

- Step 24** To save your work on this first link in the service request, click **Save**.  
You return to the Service Requests dialog box, where the information for the link you just defined is now displayed.

Figure 8-24 Service Request for an MPLS Link Completed

**MPLS Service Request Editor**

Job ID:                      SR ID:                      SR State:

Policy: Cable

Description:

Showing 1-1 of 1 records

#	<input type="checkbox"/>	Link ID	CLE	CLE Interface	PE	PE Interface	Link Attribute	Logical Link
1.	<input type="checkbox"/>	0	Select CLE	<input type="text"/>	enpe1	<input type="text" value="Cable0/1"/>	Edited	N/A

Rows per page:

95437