

Welcome to Cisco Element Management Framework

This User Guide provides you step by step instructions for most of the tasks you will perform using Cisco Element Management Framework (Cisco EMF). Chapter 2, “Cisco EMF Concepts,” provides background information about Cisco EMF and is of most use to network administrators and developers. Appendix A, “Glossary,” defines Cisco EMF and associated network management terminology.

Cisco EMF User Session

In order to gain access to Cisco EMF tools, you must first start an Cisco EMF user session.

Starting an Cisco EMF User Session

Note Cisco EMF should already be running. If, upon starting, you receive a message that Cisco EMF is not running, contact your system administrator.

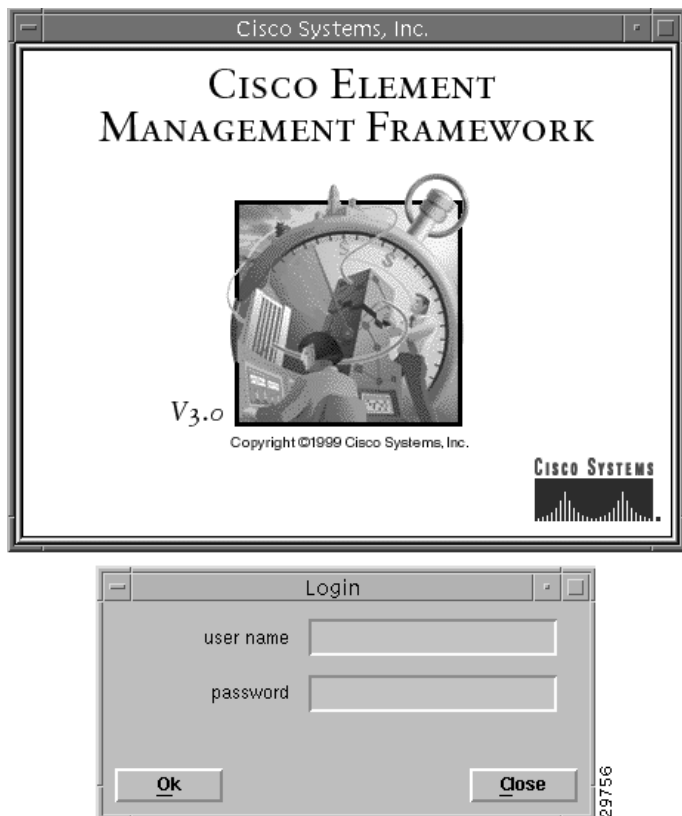
Step 1 From the command line on the terminal window, type:

```
host% <CEMF_ROOT>/bin/cemf session
```

where <CEMF_ROOT> is the Cisco EMF 3.0 installation root directory (for example, /opt/cemf).

The Cisco EMF Login window shown in Figure 1-1, is displayed.

Figure 1-1 Cisco EMF Login Window



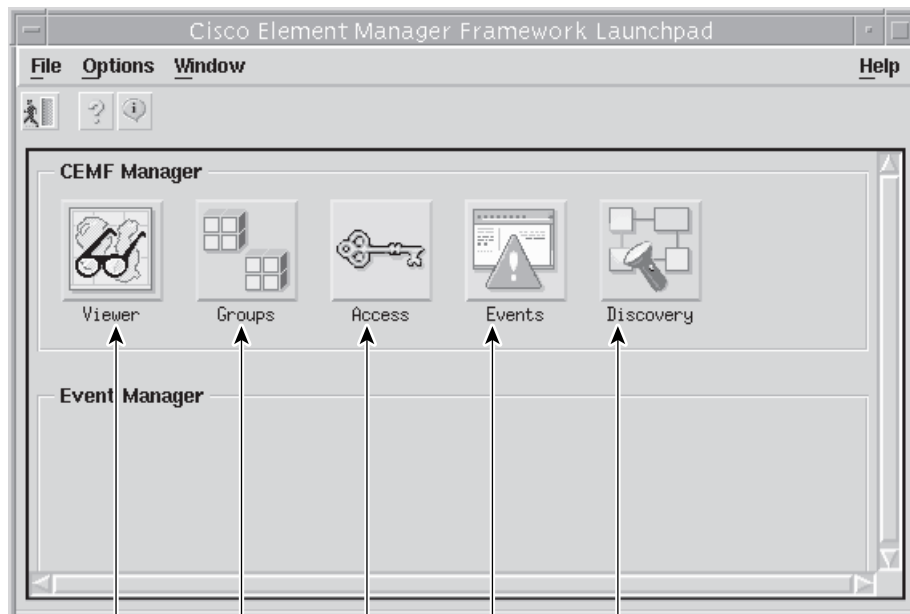
- Step 2** Enter your user name and password, then click **Ok** to proceed.
If an unknown user name or password is entered, an error message is displayed.
- Step 3** Click **Ok**, then enter a valid user name and corresponding password.
You have three attempts to specify a valid user name and corresponding password. When you specify a valid user name and the corresponding password, the session starts and the Cisco EMF Launchpad window, shown in Figure 1-2, is displayed.
If, after three attempts, you do not specify a valid user name and corresponding password, the session does not start and the Login window closes.

Cisco EMF Launchpad

The icons displayed in the Cisco EMF frame on the Launchpad represent applications that are provided by this Cisco EMF installation. Extra icons may appear when additional packages are installed. The icons appear in a frame identified by the package name.

The icons displayed in Figure 1-2 represent the standard Cisco EMF tools.

Figure 1-2 Cisco EMF Launchpad




Launching an Application

From the **Cisco EMF Launchpad**, click on the desired application's icon. The selected application is launched. A "busy" icon and a message in the status bar is displayed during launch. More than one instance of an application can be opened at any one time.

Note If an application is already open, it appears in the **Windows** list. Select **Window** and choose the application you require from the drop down menu.

Quitting a Cisco EMF User Session

- Step 1** From the **File** menu, select **Quit** or press **Ctrl + Q** or click the **Close** icon  from the Toolbar.
- Step 2** A dialog box asking, *Do you wish to quit the CEMF Manager System?* is displayed. Click the **Yes** button to quit the session.
- All active applications are closed and the session terminates.

Using Cisco EMF Tools - An Introduction

You can use either the mouse or the keyboard to access the various features provided by Cisco EMF. The mouse buttons are used for the functions listed below.

Using the Mouse

Each button on the mouse is consistently used for different functions in Cisco EMF.

- Click the left mouse button to:
 - Select
 - Activate
 - Set the location of the cursor
- Click the middle mouse button to:
 - Copy
 - Move
 - Drag
- Click the right mouse button to access pop up menus by clicking and holding the right mouse button on a managed object within applications, such as the Map Viewer and the Object Group Manager, and events in the Event Browser.

Shortcut Keys

Ctrl +

Standard Cisco EMF menus are available from the Toolbar. Items can be selected from the menus or by typing the following keys:

Table 1-1 File Menu

Ctrl + Q	Quit
Ctrl + W	Close
Ctrl + P	Print
Ctrl + S	Save
Ctrl + N	New
Ctrl + O	Open

Table 1-2 Edit Menu

Ctrl + Z	Undo
Ctrl + X	Cut
Ctrl + C	Copy
Ctrl + V	Paste
Ctrl + A	Select all
Ctrl + D	Deselect all

Note When a menu option is grayed out, it is not available for selection.

Alt +

Items in the Cisco EMF windows may be presented with the first (initial) letter underlined; for example, Actions. This means you can either select this option by left-clicking the mouse, or you can type **Alt + A** (in this example) from the keyboard.

Selecting from Lists in Cisco EMF

Block Selecting Multiple Items by Clicking and the Shift Key

- Step 1** Select the first item.
The item is highlighted.
- Step 2** Press and hold the **Shift** key.
- Step 3** Select the last item in the sequence.
- Step 4** Release the **Shift** key.
All items between the first and last item are highlighted.

Selecting Multiple Items by Clicking and the Ctrl Key

- Step 1** Select a relevant item in the list.
The item is highlighted.
- Step 2** Place the cursor over the next item to be selected.
- Step 3** Press **Ctrl** and click the left mouse button.
The item is highlighted.
- Step 4** Repeat Step 3 until all the required items are highlighted.

Note This means of selection is useful when the items you wish to select are interspersed with other items.

Selecting All Items

- Step 1** Place the cursor anywhere in the relevant window.
- Step 2** Press and hold the right mouse button.
A pop up menu is displayed.
- Step 3** Move the cursor to the **Select All** option.
All items in the list are highlighted. Note, this option may not be available in all windows.

Deselecting All Items

- Step 1** Place the cursor anywhere in the relevant window.
- Step 2** Press and hold the right mouse button.
A pop up menu is displayed.
- Step 3** Move the cursor to the **Deselect** option.
All items in the list are deselected. Note, this option may not be available in all windows.

Status Information

The area at the bottom of most windows, to the left of the Cisco EMF logo, displays status information.

When you double-click in this area, the Status Dialog window, shown in Figure 1-3, is displayed. This window lists previous status messages.

Figure 1-3 Status Dialog Window



Toolbar

The Toolbar contains icons which invoke various tools and menu options. The icons displayed in the Toolbar vary, depending on which window is being viewed. You can disable the Toolbar so it is not displayed in the window.

Enabling the Toolbar

From the **Options** menu, select **Show Toolbar**. The square next to **Show Toolbar** in the **Options** drop down menu appears. The Toolbar is only displayed in the current window. The display of all other windows' Toolbars are not affected.

Note The **Show Toolbar option** toggles the displaying of the Toolbar on and off. If a square is displayed to the left of **Show Toolbar** in the **Options** drop down menu, the Toolbar relevant to the current window is displayed.

Figure 1-4 Example Toolbar



Disabling the Toolbar

From the **Options** menu, select **Show Toolbar**.

Note The **Show Toolbar** option toggles the displaying of the Toolbar on and off. When a square is displayed to the left of **Show Toolbar** on the **Options** drop down menu, the Toolbar relevant to the current window is displayed.

The square next to **Show Toolbar** on the **Options** drop down menu disappears. A Toolbar is not displayed in the current window. The display of all other windows' Toolbars are not affected.


Showing or Hiding Tooltips

Tooltips provide a brief description or explanation of a Toolbar button or window panel. Tooltips appear when the cursor is positioned over the item. You can choose to show or hide tooltips.


From the **Options** menu, select or clear the **Enable Tooltip** option.

Note The **Enable Tooltip** option toggles the tooltips on and off. When a square is displayed to the left of **Enable Tooltips** on the **Options** drop down menu, tooltips are displayed.


Printing the View Displayed in the Window

Step 1 From the **File** menu, select **Print** or press **Ctrl + P** or click the **Print** icon  from the Toolbar. The displayed view is printed.

Closing a Window

Step 1 From the **File** menu select **Close** or press **Ctrl + W** or click the **Close** icon  from the Toolbar.

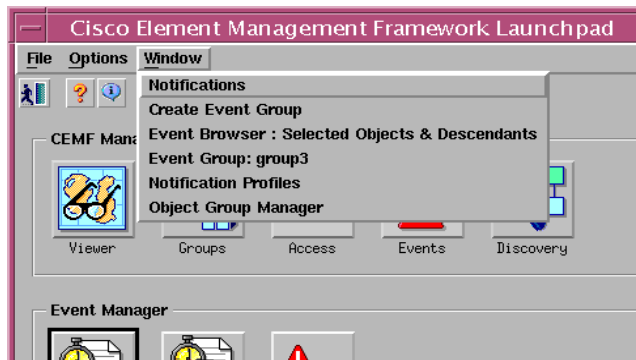
Accessing Help

Each window has the option to click the Help icon,  or to select **Help** from the menu bar. A list of help topics is displayed.

Window Option

Each window has a **Window** menu, as shown in Figure 1-5. When a window is open, it appears as an option in this menu. Select **Window**, then choose the window you desire to open from the list of windows provided in the **Window** menu.

Figure 1-5 Window Drop Down Menu



Severity Colors

The colors and meanings of severities used in Cisco EMF are shown in Table 1-3.

Table 1-3 Severities

	Color	Severity of Event
	Red	Critical
	Orange	Major
	Yellow	Minor
	Cyan	Warning
	Green	No Events (Normal)
	White	Informational

