

# Deployment Wizard

---

The Deployment Wizard is the graphical interface used to create new objects representing the network elements to be managed with the Cisco EMF Server. The Deployment Wizard uses Deployment Profiles to prompt you for the information that is required by the deployment process. It can be accessed from different windows within Cisco EMF as outlined below.

## Opening the Deployment Wizard from the Class Palette

You can access the Deployment Wizard through the Class Palette window. The Class Palette window provides a selection of network elements that can be displayed within Cisco EMF. When you select an object from the Class Palette window, the Deployment Wizard is invoked, as described below.

The Class Palette opens automatically when you select **Edit Map** as a service on a selected object (refer to Chapter 10, “Managing Objects in Cisco EMF,” for more details.) The Map Builder window and the Class Palette window are displayed.

The Class Palette can also be opened from the Map Builder window. Select the **View** menu’s **Open Class Palette** option. A window similar to Figure 4-1, is displayed.

**Figure 4-1**      **Class Palette Window**

- Step 1** Place the cursor over the active icon that represents the object class to be added.
- Step 2** Press and hold the left mouse button.
- Step 3** Drag the selected icon to the desired location on the map, then release the mouse button.  
The selected icon is now displayed on the map and the Deployment Wizard is displayed.

---

**Note** When you launch the Deployment Wizard from the Class Palette window, you are presented with all of the available Deployment Profiles for the class of object you dragged onto the map.

---

## Opening the Deployment Wizard from an Existing Object

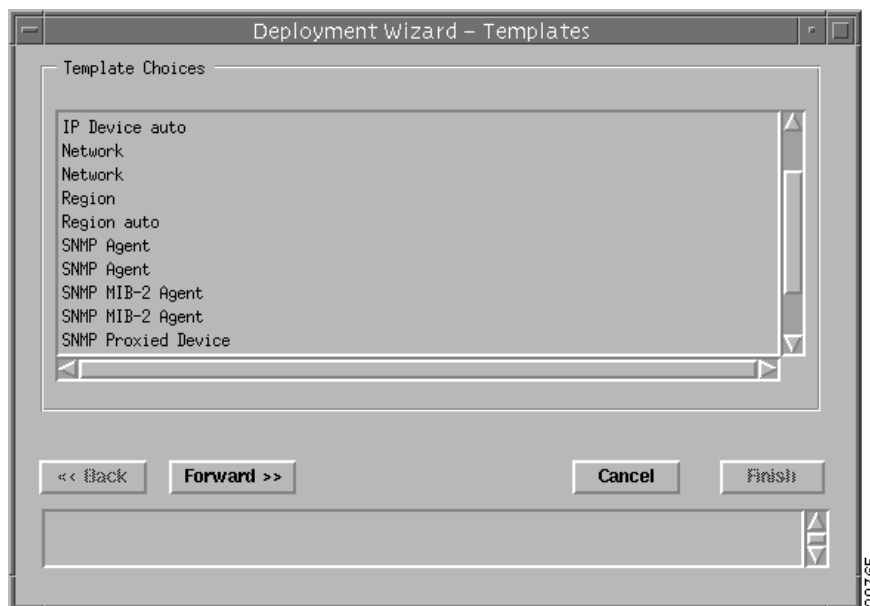
You also have the option to open deployment as a service from a pop up menu available on a selected object.

- Step 1** Right click on the object below which you want to deploy.
- Step 2** From the pop up menu, select **Deployment**, then select **Deploy Objects**.  
The Deployment Selector window, shown in Figure 4-2, is displayed.

## Deploying a New Generic Object

A generic object is a non-technology specific object within CEMF. To deploy a new generic object (for example, a site) proceed as follows from the Deployment Selector screen.

**Figure 4-2** Deployment Selector Window



---

**Note** When you launch the Deployment Wizard, you are presented with a set of all available generic Deployment Profiles.

---

**Step 1** Select a Deployment Profile. **Deploy Auto Named Site** is selected by default.

**Step 2** Click **Forward**.

The Deployment Details window, similar to Figure 4-3, is displayed.

---

**Note** You can cancel at any point up to the commit (**Finish**).

---

**Figure 4-3** Deployment Details Window

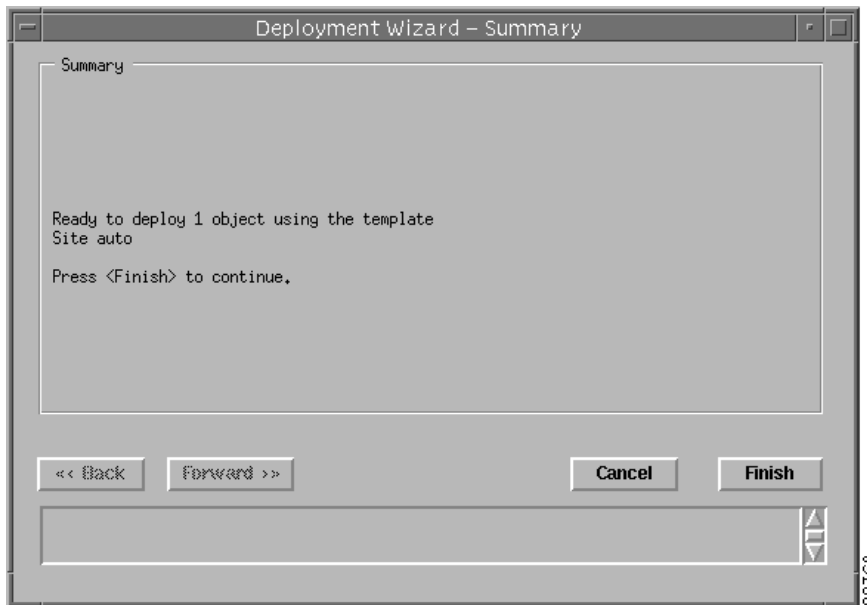


This case illustrates a Deployment Profile that will deploy a user specified number of sites. This profile will automatically name the sites without each one having to be named individually. This can be achieved by specifying the prefix to use. The resultant objects are named by appending their ordinal value to this prefix. For example, if the prefix is "SITE-1-", the objects are named "SITE-1-1", "SITE-1-2"... "SITE-1-10" for ten sites. This way, in a separate scenario, you can use automatic naming under the same parent object by specifying a different prefix. For example, by specifying "SITE-2-" as the prefix, another ten sites would be named "SITE-2-1", "SITE-2-2"... "SITE-2-10".

**Step 3** Click **Forward**.

The Deployment Summary window is displayed. This window summarizes the deployment you have created and allows you to commit or reject the deployment. A screen window similar to Figure 4-4, is displayed.

Figure 4-4 Deployment Summary Window



**Step 4** Click **Finish** to commit the deployment.

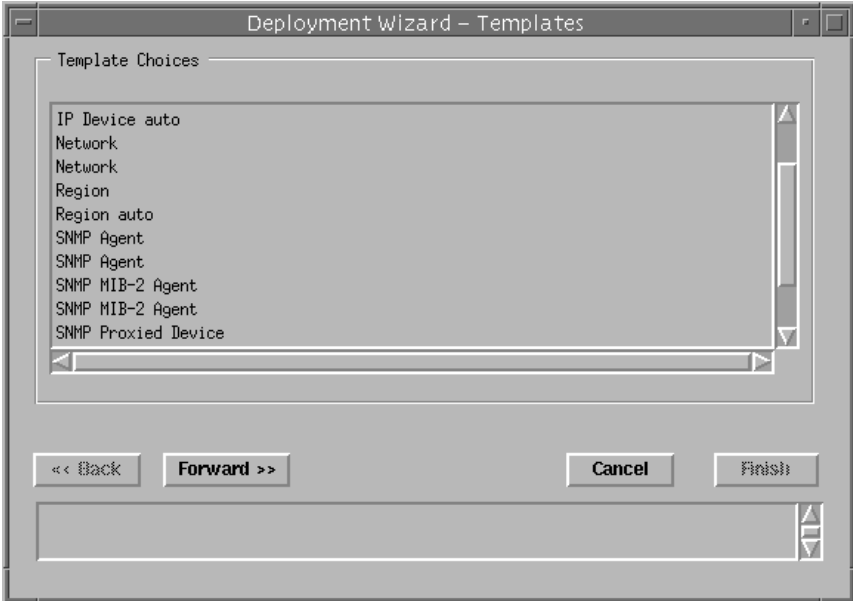
## Deploying a Technology Specific Object

The previous example showed a simple generic deployment scenario. This example shows the deployment of a technology specific object (for example, an SNMP network element which typically requires more questions to be asked during deployment).

**Step 1** Right click on a site object within the Map Viewer, select **Deployment**, then select **Deploy Objects**.

A window similar to Figure 4-5, is displayed.

Figure 4-5 Deployment Selector Window



**Step 2** Select the Deployment Profile **SNMP MIB-2 Object**, then click **Forward**.

**Step 3** Enter the number of **MIB-2** objects required. Click **Forward**.  
An Object Details window, similar to Figure 4-6, is displayed.

Figure 4-6 Object Details Window



This window shows the parameters that are required in order to successfully deploy the object. These fields are mandatory.

**Step 4** Enter valid values for the object's name, IP address, and SNMP Community, then click **Forward**.

The object(s) can now be deployed. The Deployment Summary window is displayed. This window summarizes the deployment you have created and allows you to commit or reject the deployment. You are informed if deployment has been successful.