



# Network Address Translation Support

---

This chapter introduces Network Address Translation (NAT) support in Resource Manager Essentials and provides details of the tasks you need to perform to enable support.

The following topics are covered in this section:

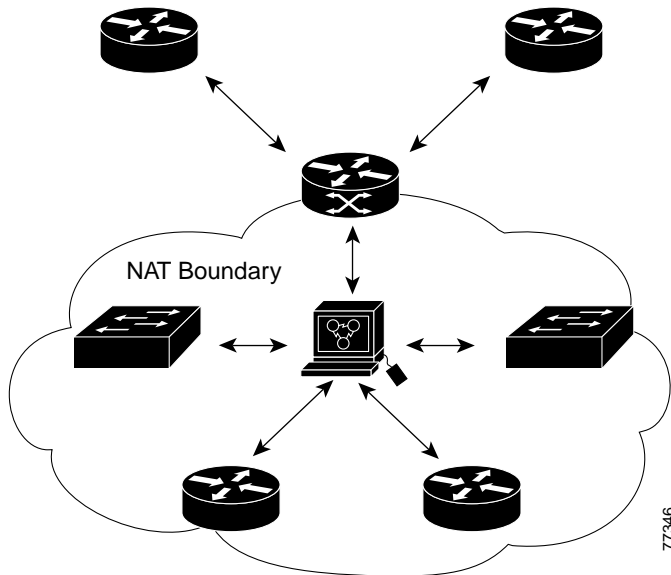
- [Introducing NAT Support](#)
- [Managing devices outside the NAT](#)

## Introducing NAT Support

Essentials can manage devices outside the NAT boundary using their IP addresses. As the NAT translates between the public and private address for the Essentials servers, these devices will remain SNMP reachable. In Essentials, **config fetch** and **image transfer** commands can be performed using TFTP. Essentials uses SNMP to perform these operations. When Essentials issues an SNMP set command to a device, the device will initiate a TFTP transfer with the parameters provided through SNMP. In the SNMP command set, if Essentials sets its private address, the TFTP transfer would fail as a device outside the NAT cannot reach private address of the RME servers.

The [Figure 4-1](#) depicts a typical NAT scenario. In this figure, the Essentials server is within the NAT boundary. Essentials can manage the devices within the NAT boundary, using their private addresses. When Essentials tries to manage devices outside the NAT boundary, you need to enable support for NAT as described in [“Managing devices outside the NAT”](#).

Figure 4-1 NAT Support



## Managing devices outside the NAT

To manage devices outside the NAT boundary:

- 
- Step 1** Open a command prompt window.
- Step 2** Stop the daemon manager by entering:
- ```
/etc/init.d/dmgttd stop
```
- on Solaris
- or
- ```
net stop crmdmgttd
```
- on Windows.

**Step 3** Navigate to:  
`$NMSROOT/www/classpath/com/cisco/nm/config/archive/` in Solaris  
or  
`%NMSROOT\www\classpath\com\cisco\nm\config\archive\` in Windows.

**Step 4** Open the `config.properties` file in a text editor

**Step 5** Modify the `config.properties` file:

```
USE_NAT= Yes
```

```
USER_FIELD=X
```

where *X* is 1 or 2 or 3 or 4.

The value *X* corresponds to the **User Fields** under **Resource Manager Essentials > Administration > Inventory > Add Devices**

**Step 6** Restart the daemon manager by entering:

```
/etc/init.d/dmgttd start
```

 on Solaris

or

```
net start crmdmgttd
```

 on Windows.

---

**Note**

While adding the device outside the NAT boundary, in addition to the Device Name field, provide the *public address* of the Essentials server in User Field *X*.

While adding the device within the NAT boundary, just provide the Device Name as before. You need not enter any value in the User Field.

---

■ Managing devices outside the NAT