



The DFM Administration Console and Polling and Thresholds Console

These topics describe two consoles that are integral to DFM administration: the Administration Console, and the Polling and Thresholds Console:

- [Layout of the Administration Console, page 5-2](#)
- [Layout of the Polling and Thresholds Console, page 5-5](#)



Note

All times shown on the Administration Console represent the server time.

The *Administration Console* is the primary tool for managing Device Fault Manager (DFM). Managerial tasks include:

- Managing or unmanaging elements in the managed inventory.
- Browsing the managed inventory.

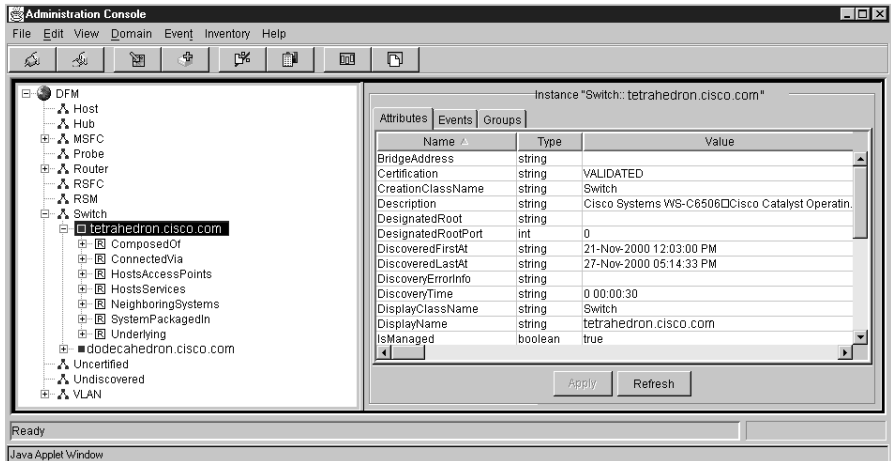
The *Polling and Thresholds Console*, which is opened from the Administration Console Edit menu, is used to modify DFM's default configuration. This configuration is controlled by groups and their settings. The Polling and Thresholds Console provides the following capabilities:

- Adjusting the values of performance and error thresholds that are used for analysis.
- Determining the frequency at which data is collected through polling.
- Creating and modifying configuration groups.

Layout of the Administration Console

The Administration Console contains two panels. The left panel displays an inventory tree that lists system classes and VLANs. Systems include devices such as switches, hubs, bridges, routers, router switch modules, probes, and hosts.

Figure 5-1 Basic Layout of the DFM Administration Console



50222

The right panel displays the properties of the item selected in the left panel. When an instance (managed element) of a class is selected in the left panel, the right panel displays the properties of the instance under three tabs:

- Attributes lists the attributes and their values for the selected instance.

**Note**

If a line appears in place of an attribute value, the value is derived by polling an external device which is currently unavailable to the domain manager. The line may appear in either the Details tab of the Notification Properties window or the Attribute tab of a property sheet in the Topology Browser view. In addition, classes listed in the left panel can be expanded when there are instances of that class in the inventory. Expanding a class lists the instances of that class. When an instance is expanded, the relationships that the instance participates in with other instances are revealed. Expanding the relationship shows the classes for which there are instances participating in the relationship.

- Events lists the events that can occur in or affect the instance. Active events are colored according to their type. Double-clicking on an event displays the Notification Properties window for the event. For more information regarding the Notification Properties dialog, see the [“Displaying Notification Properties on the Monitoring Console”](#) section on page 12-8.
- Group lists the Polling and Threshold groups the instance is a member of and the settings from those groups that apply to the instance.







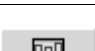

These topics provide further information on using the Administration Console:

- [Administration Console Toolbar Buttons](#), page 5-4
- [Customizing the Display of the Administration Console](#), page 5-5

Administration Console Toolbar Buttons

In the DFM Administration Console, certain file menu commands can be performed through a toolbar button. They are summarized in the following table:

Table 5-1 Administration Console Toolbar Buttons

Button	Description
 44645	Attach to a domain manager.
 44647	Detach from a domain manager.
 44649	Import inventory from seed file.
 44648	Add a new SNMP agent.
 44652	Reconfigure polling and thresholds group.
 44653	Save the inventory.
 44650	Open a Monitoring Console.
 44651	Edit the Polling and Thresholds Console.



Note

When you open a Monitoring Console using the toolbar button, the console includes an Inventory Browser display. If you open a Monitoring Console by selecting **Device Fault Manager > Monitoring Console**, the console does *not* display the Inventory Browser.

Customizing the Display of the Administration Console

You can modify the left panel of the Administration Console so that a different list of classes and their instances are displayed.

To customize the left panel of the Administration Console, perform these steps:

-
- Step 1** Right-click in the left panel.
- Step 2** In the pop-up menu, choose **Select** to display the Select tree contents dialog.
- Step 3** In the Select tree contents dialog, you can:
- Display a specific domain manager. Click the radio button for Domain and select the domain manager from the pull-down menu.
 - Display one or more specific classes. Select the class. To select multiple classes, press the **Ctrl** key and select each class.
 - If you select classes that have instances, you can also select specific instances to display.
 - Display all of the classes including classes without instances. Select the check box to Show classes without instances.
- Step 4** To make your changes take effect, click on the **OK** button.
-

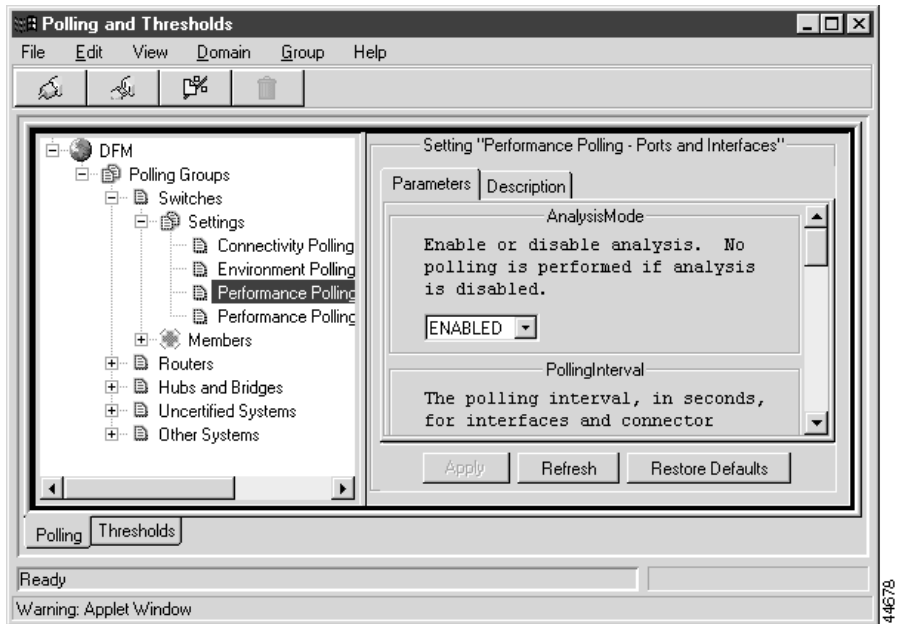
Layout of the Polling and Thresholds Console

There are two methods for opening the Polling and Thresholds Console from the Administration Console:

- Select **Edit > Polling and Thresholds**
- Click the Polling and Thresholds toolbar button

The Polling and Thresholds Console is divided into two panels. The left panel displays the icon for the domain manager in the upper-left corner and provides two tabs, Polling and Thresholds, at the bottom. The right panel remains blank until a group, setting, or member is selected in the left panel. When an item is selected in the left panel, the right panel displays additional information regarding the selected item.

Figure 5-2 Polling and Thresholds Console



When the Polling tab is selected, the Polling and Thresholds Console displays polling groups. A polling group consists of settings that control various polling parameters, as well as a membership list that is the managed elements to which the settings are applied.





Likewise, when the Thresholds tab is selected, the console displays threshold groups. The settings for threshold groups provide adjustable parameters that are used for analysis.

For information regarding how to change settings and groups, see [Chapter 8, “Working with DFM Groups and Settings.”](#)

Polling and Thresholds Console Toolbar Buttons

In the Polling and Thresholds Console, certain file menu commands can be performed through a toolbar button. They are summarized in the following table:

Table 5-2 *Polling and Thresholds Console Toolbar Buttons*

Button	Description
 44545	Attach to a domain manager.
 44547	Detach from a domain manager.
 44552	Reconfigure polling and thresholds group.
 44546	Delete the selected item from the domain manager.

