



Device Management

CiscoView imports the devices it will manage and their SNMP credentials from the device list contained in the Device and Credential Repository (DCR). DCR serves as a common device repository for all installed CiscoWorks applications. CiscoView displays the device list using the Groups feature, which determines the membership of a group by interpreting and applying the rule associated with a group of devices. Through the Device and Credential Admin (DCA), which provides an interface to administer DCR, you can add new devices or edit the current SNMP credentials for a device (see *User Guide for CiscoWorks Common Services* for more information).



Note

CiscoView 6.1 supports SNMPv3 and gives preference to SNMPv3 credentials if the SNMPv1 or SNMPv2 credentials for a device are also present in the DCR.

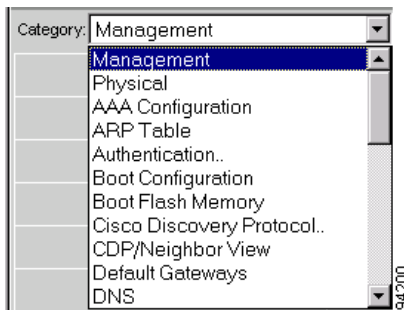
This section contains the following topics:

- [Understanding Categories, page 2-2](#)
- [Configuring Devices, page 2-3](#)
- [Monitoring Devices, page 2-4](#)

Understanding Categories

Categories consist of commands and options specific to a selected device. You modify or view categories to configure and monitor a device, card, and port. For example, a Catalyst 6000 device has configuration categories such as Management, Physical, AAA Configuration, ARP Table, Authentication, and so on (see [Figure 2-1](#)).

Figure 2-1 Category Example



Note

Some devices and components have no categories.

Editing Categories

You can display and change different categories of information for each device, card, and port. Each device has different categories that you can configure and monitor.

The **Category** list in the Configuration and Monitor dialog boxes shows the categories of information available for the selected device or component. (Some devices or selections have no Category field.) For a Catalyst 6000 device, for example, configuration categories comprise Management, Physical, AAA Configuration, ARP Table, Authentication, etc.

Configuring Devices

Configure a device to define its characteristics, connections, and components (such as cards and ports). You can configure different categories of information for devices and components and also change multiple categories at the same time.

-
- Step 1** Select a device from the [Object Selector](#). A graphical representation of the device chassis appears.
- Step 2** Select the device or components to configure.
- Step 3** Right-click to display the context menu, then select **Configure**. The Configuration dialog box appears.
- Step 4** From the Category list, select the category to configure and enter the required information. Note the following:
- Categories and fields vary by device.
 - As you change the information in fields for different categories, the changes are retained.
- Step 5** When you are done modifying a category, click one of the following buttons:

Button	Description
OK	Applies your changes and exits the dialog box.
Apply	Applies your changes. The Configuration dialog box remains open; you can select more categories to view or configure.
Cancel	Cancels your changes and exits the dialog box.
Refresh	Refreshes the dialog box.
Print	Prints the current category.
Help	Opens online help that is specific to that device and category.

If a table appears, click one of the following buttons:

Button	Description
Create	Opens the Table Row Creation dialog box.
Delete	Deletes the selected rows from the table.

Monitoring Devices

You can monitor real-time statistics for interfaces, resource utilization, and device performance. CiscoView also allows you to simultaneously monitor multiple categories, such as Ethernet Collisions, Management, Physical, and ARP Table.

CiscoView supports pie, strip, x-y, and bar charts. The chart type displayed depends on the selected device and category.

-
- Step 1** Select a device from the [Object Selector](#). A graphical representation of the device chassis appears.
 - Step 2** Select the device or components.
 - Step 3** Right-click to display the context menu, and then select **Monitor**. The Monitor dialog box appears and displays a summary of performance charts that vary by device.



Note When a bar graph fills up, it scrolls to the left as polling continues.

- Step 4** Select a category from the Category list and a value from the Refresh Rate list. A chart for the selected category appears. It is updated at the selected refresh rate.
- Step 5** (**Optional**) Select another category and refresh rate to open another monitor window. You can monitor multiple categories simultaneously.

Step 6 Click one of the following buttons:

Button	Description
Start/Stop	Begins or ends the monitoring of device information.
Cancel	Exits the dialog box.
Print	Prints current charts.
Help	Opens online help that is specific to that category and device.

Viewing System Information

The System Information dialog box displays the following system information about the type of device available:

- Device Name
- Description
- Location
- Contact
- Time of the device displayed

-
- Step 1** Select a device from the [Object Selector](#). A graphical representation of the device chassis appears.
- Step 2** Click on the device display so that a yellow border appears around the entire device.
- Step 3** Right-click to display the context menu, and then select **System Info**. The System Information dialog box appears.
-

Using Tables

If you select multiple components for configuring or monitoring, a table appears. A read-write table entry appears with either a combo-box, text box, or check box. All entries in a monitor table are read-only. You can add, modify, or delete entries from a configuration table.

-
- Step 1** Select the table row entry that you want to modify.
 - Step 2** Either type a new value or select one from the list.
 - Step 3** Click **Apply**.
-