



Getting Started with CVDM-C6500

CiscoView Device Manager for the Cisco Catalyst 6500 Series (CVDM-C6500) is an embedded device manager for single chassis setup, switch and services configuration, and monitoring of the Cisco Catalyst 6500 family of products. CVDM-C6500 makes initial switch, VLAN, port, and service module configuration easier by allowing you to perform all these operations using one graphical user interface (GUI) tool.

You use wizards and dialog boxes to make your configurations; CVDM-C6500 then designs best-practice command line interface (CLI) configurations based on your GUI configurations. You can view the CLI configurations generated by CVDM-C6500 and deploy them to the device immediately or save them for future editing.

More importantly, CVDM-C6500 shows you a graphical view of LANs configured across service modules and enables basic setup of each module so that its own embedded device manager (if available) can be launched. In addition to these features, CVDM-C6500 shows you a summary of the device and allows you to perform basic switch configuration tasks such as VLAN, port, and spanning tree configuration.

You can also configure global settings, such as spanning tree, banners, and connectivity to individual service modules; after performing such tasks, you can start the embedded device managers for each of the installed service modules (such as the SSL Device Manager on the SSL) for more in-depth service module configuration.



Note

CVDM-C6500 supports the deployment of native Cisco IOS commands only.

This section includes the following topics:

- [Key Features in CVDM-C6500, page 1-2](#)
- [Starting CVDM-C6500, page 1-4](#)
- [Navigating in CVDM-C6500, page 1-9](#)
- [Starting Embedded CiscoView from CVDM-C6500, page 1-20](#)
- [Saving Startup Configurations, page 1-23](#)
- [Editing Preferences, page 1-23](#)
- [Viewing the Running Configuration Information for a Device, page 1-25](#)
- [Viewing the Device Transport Log, page 1-25](#)
- [Refreshing CVDM-C6500, page 1-26](#)
- [Delivering CLI Commands to the Device, page 1-26](#)
- [Resetting Service Modules, page 1-27](#)
- [Understanding Your User Role, page 1-28](#)
- [What's Next?, page 1-33](#)

Key Features in CVDM-C6500

The following table describes the key features of CVDM-C6500.

Table 1-1 Key Features

Feature	Description
Basic switch, port, VLAN, spanning tree, VPN and forwarding instances (VRFs), and SVI configuration	CVDM-C6500 provides functions for port, VLAN, spanning tree, VRF, and SVI configuration.
Initial service module setup	<p>CVDM-C6500 provides functions for the initial configuration of the following service modules:</p> <ul style="list-style-type: none"> • Firewall Services Module (FWSM) • Content Switching Module (CSM) • Secure Socket Layer (SSL) Services Module • Virtual Private Network (VPN) Services Module • Network Analysis Module (NAM) • Intrusion Detection System Module (IDSM) • Wireless LAN Services Module (WLSM) • Content Switching Module with SSL (CSM-S) <p>CVDM-C6500 also provides deployment templates, based on Cisco-recommended configurations, that perform VLAN setup between the service modules, including any configurations required for traffic flow across them.</p>
Graphical and wireless service visualization	<p>CVDM-C6500 provides a topology map that displays VLAN connectivity between service modules and allows you to perform certain configuration tasks on service modules.</p> <p>CVDM-C6500 also provides a wireless view map that displays information about the wireless networks configured on your device, such as the number of mobile nodes and number of access points on the wireless network. You can also configure wireless networks and search for wireless networks from this map.</p>
Integration of service module device managers	CVDM-C6500 performs initial setup of device managers through encrypted communication with the switch using the method you selected during setup. You can also start device managers within CVDM-C6500.

Starting CVDM-C6500

**Note**

To start CVDM-C6500, you must enter your device credentials. You must also enter credentials for any installed service modules to populate the data for each module. For more information, see [Understanding User Credentials, page 1-29](#).

Step 1 Open a web browser.

Step 2 In your browser, enter the IP address or DNS hostname of the device. The Enter Network Password dialog box appears (see [Figure 1-1](#)), prompting you for your level 15 credentials.

**Note**

If you are using a Cisco IOS 12.1.(13)E image, enter the following in your web browser:

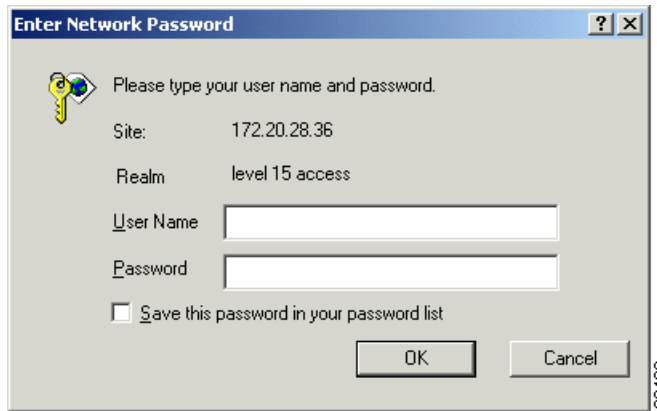
`http://<ip-address>/flash/cv/applet.html?dynarchives=cvdm-c6500-1.1.sgz`

or

`http://<ip-address>/flash/cv/applet.html?dynarchives=cvdm-c6500-1.1_K9.sgz`

(if you installed Cisco IOS Cryptographic software)

where *<ip-address>* is the IP address of the switch. It may be useful to bookmark this URL for future use.

Figure 1-1 Enter Network Password Dialog Box

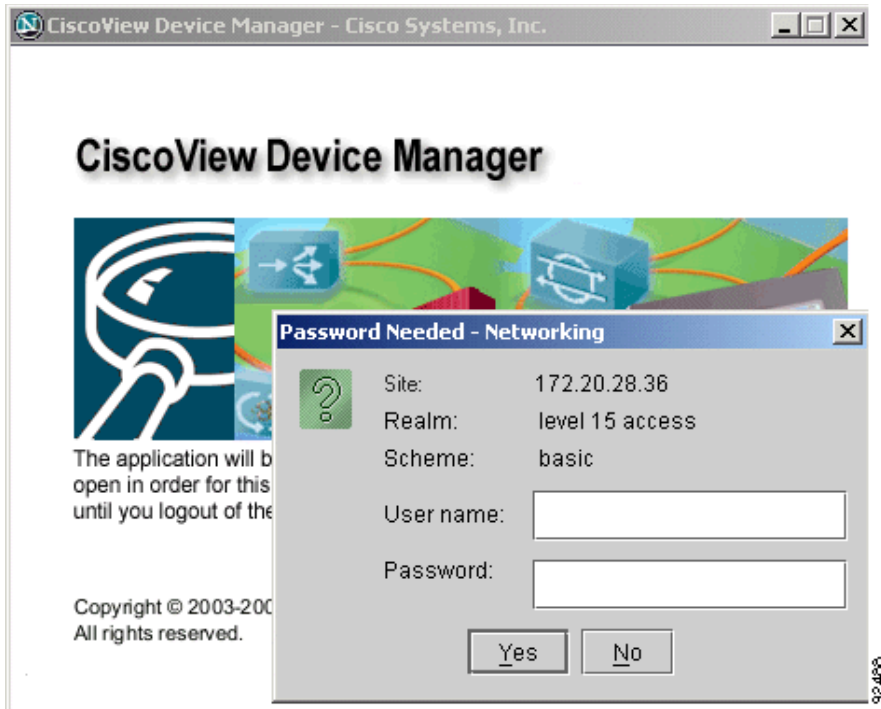
- Step 3** Enter your username and password for level 15 access. If you do not have level 15 access to the device, CVDM-C6500 will not start.



Note If enable password is used for HTTP authentication, use enable password only.

- Step 4** Click **OK**. The device home page appears.
- Step 5** Click the CVDM-C6500 link on the device home page.
- Step 6** The CVDM-C6500 splash screen is displayed, and the Password Needed - Networking dialog box appears (see [Figure 1-2](#)).

Figure 1-2 Splash Screen and Password Needed - Networking Dialog box



Note If you do not have Java Plug-in version 1.4.2_06, you will be prompted to install it. If you are not prompted, go to http://java.sun.com/products/archive/j2se/1.4.2_06/index.html and install the Java plug-in.

This website is Copyright © 1994-2005, Sun Microsystems, Inc.

The CVDM-C6500 splash screen must remain open in order for the application to function properly. Do not close this window until you log out. CVDM-C6500 will appear in a separate window.



Note It may take some time before CVDM-C6500 appears.

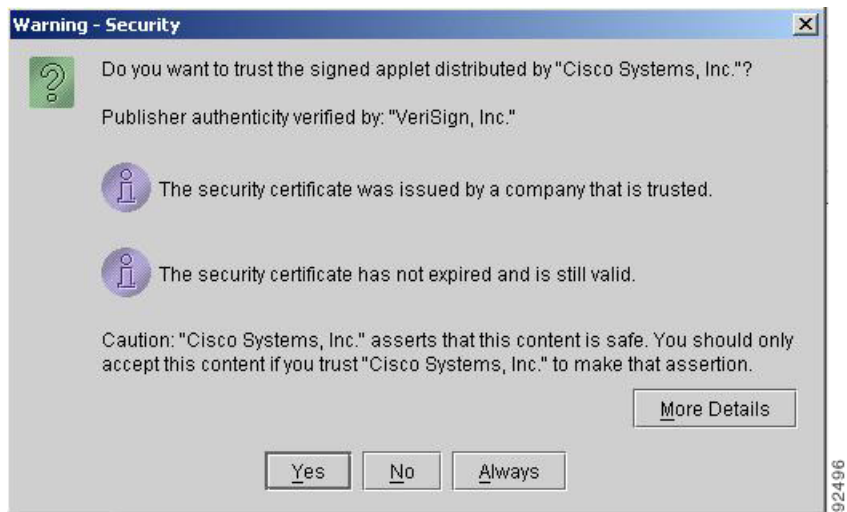
Step 7 In the Password Needed - Networking dialog box, enter your username and password.



Note If enable password is used for HTTP authentication, use enable password only.

Step 8 Click **Yes**. The Warning - Security dialog box appears (see [Figure 1-3](#)).

Figure 1-3 Warning - Security Dialog Box



Step 9 To accept the security certificate and continue, click **Yes**. A dialog box appears (see [Figure 1-4](#)), prompting you for your username and password.

Figure 1-4 Enter Credentials for <IP Address> Dialog Box (Username and Password)



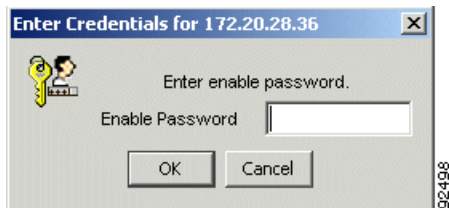
- Step 10** If SSH is enabled on the device, enter your username and password. If SSH is not activated on the device, you are prompted to authenticate using Telnet instead. Follow the prompts to enter your username and Telnet password; it also asks if you want to enable SSH on the device. To enable SSH, follow the prompts provided by the application.

If you are not using a Cisco IOS cryptographic image, you are prompted to authenticate using Telnet; follow the prompts to enter the appropriate credentials.

- Step 11** Click **OK**.

- If enable is not configured on the device, CVDM-C6500 starts. Skip the remaining steps in this procedure.
- If enable is configured on the device, a dialog box appears (see [Figure 1-5](#)), asking you to input your enable password.

Figure 1-5 Enter Credentials for <IP Address> Dialog Box (Enable Password)



- Step 12** Enter your enable password.
- Step 13** Click **OK**. CVDM-C6500 starts.
-

Installing the Java Plug-in

CVDM-C6500 requires Java Plug-in version 1.4.2_06. The first time you invoke any Java Plug-in enabled window, you are alerted if the plug-in has not been installed. CVDM-C6500 prompts you to download and install the plug-in files, using the installation screens or the procedure displayed. The next time you start the application, CVDM-C6500 automatically uses the plug-in. Install the Java Plug-in 1.4.2_06 provided with CVDM-C6500 (not from any other source).

Navigating in CVDM-C6500

Before you begin using CVDM-C6500, you must understand the basic operation of the user interface, including the login procedure and user interface elements. See the following sections for more information:

- [What Does the Home Page Show Me?, page 1-9](#)
- [What Does the Switch Page Show Me?, page 1-13](#)
- [What Does the Services Page Show Me?, page 1-14](#)
- [Understanding the CVDM-C6500 Desktop, page 1-14](#)
- [Understanding the Action Buttons, page 1-20](#)

What Does the Home Page Show Me?

The home page is the first screen that comes up when CVDM-C6500 is started. It gives a quick overview of the services running on the device and a snapshot of the overall health of the system. It displays high-level system information; any service modules, ports, VLANs, and spanning trees CVDM-C6500 has discovered; and the status of each service module installed (see [Figure 1-6](#)).

Figure 1-6 CVDM-C6500 Home Page Components and Descriptions

The screenshot shows the CiscoView Device Manager for Catalyst 6500 interface. The main content area is divided into four primary sections:



- System Overview (1):** Displays host information (Hostname: CVDM-IOS-6509-2, Serial Number: SAL0744NYKG, Model: WS-C6509, IOS Version: 12.2(18)SXD), image details, and resource usage (CPU: 1%, Memory: 11%, Flash: 72%).
- Switch Dashboard (2):** Provides a summary of switch features including Ports, VLANs, and Spanning Tree.
- Services Dashboard (3):** Lists active services such as IDS Slot 1, Wireless Slot 3, and VPN Slot 4, along with their respective details.
- Module Status (5):** A table listing installed modules with their status, descriptions, serial numbers, models, and software versions.

At the bottom right, a **Reset** button (4) is visible. The status bar at the bottom shows the current level (level15), navigation arrows, and the system time (Mon Jan 31 23:21:01 PST 2005).

Slot	Status	Description	Serial Number	Model	Software Version
1	OK	Intrusion Detection System	SAD0713002W	WS-SVC-IDSM-2	4.1(1)S47
1	OK	IDS 2 accelerator board	0347FFF9C	WS-SVC-IDSUPG	
2	OK	48-port 10/100 mb RJ45	SAL0739M91S	WS-X6148-RJ-45	8.3(0.156)RO
3	OK	Wireless LAN Service Module	SAD07470149	WS-SVC-WLAN-1-K9	1.1(1)
4	OK	IPSec VPN Accelerator	SAD0718011P	WS-SVC-IPSEC-1	8.3(0.156)RO
5	OK	Supervisor Engine 720 (Active)	SAD075301KR	WS-SUP720-BASE	12.2(18)SXD
5	OK	Policy Feature Card 3	SAD075300CT	WS-FBK-PRC3A	
5	OK	MSFC3 Daughterboard	SAD075206T0	WS-SUP720	
7	OK	SLB Application Processor Complex	SAD0753030N	WS-X6066-SLB-APC	4.2(0.??)-Eng
8	OK	ICSM with SSI	SAD0639065H	WS-X6066-SLB-APC	4.1(1)

92491

Figure 1-6 Reference	Location	Description
1	System Overview tab	<p>Provides high-level information about the device and shows the following information:</p> <ul style="list-style-type: none"> • Hostname—The hostname of the device. • Serial Number—The serial number of the device. • Description—A brief description of the device. • Model—The model type of the device. • IOS version—The Cisco IOS image version the device is running. • Image—The name of the image running on the device. • Up Since—The length of time the device has been operational. <p>The supervisor pane displays the percentage of CPU, memory, and Flash used by the supervisor card.</p>
2	Switch Dashboard tab	<p>Provides information about ports, VLANs, spanning trees, and VRFs discovered by the device, such as the number of access ports and the number of Layer 2 VLANs.</p> <p>Click the link for any switch object to open the corresponding page for that object.</p>

Figure 1-6 Reference	Location	Description
3	Services Dashboard tab	<p>Provides information about the service modules on the device. Click the link for any service to open the corresponding page for that service module.</p> <p>If there are no service modules installed, a No Service Modules link appears. For more information, see No Service Modules Installed, page 1-12.</p> <p>If credentials are not available for a service module, the Enter Credentials link appears. Click this link to open the Enter Credentials dialog box and enter the desired credentials. For more information, see Understanding User Credentials, page 1-29.</p>
4	Reset button	<p>After selecting a service module from the table in the Module Status pane, click to reset the service module. See Resetting Service Modules, page 1-27 for more information.</p>
5	Module Status tab	<p>Provides an overview of installed service modules and provides a table that displays the following information:</p> <ul style="list-style-type: none"> • Slot—The slot to which the service module is attached. • Status—Status of the service module. A  icon indicates that the module is operationally up; a  icon indicates that the module is operationally down. • Description—A brief description of the service module. • Serial Number—The serial number of the service module. • Model—The model type of the service module. • Software Version—The Cisco IOS version running on the service module.

No Service Modules Installed

If no service modules are installed, the No Services available link is displayed on the Services Dashboard.

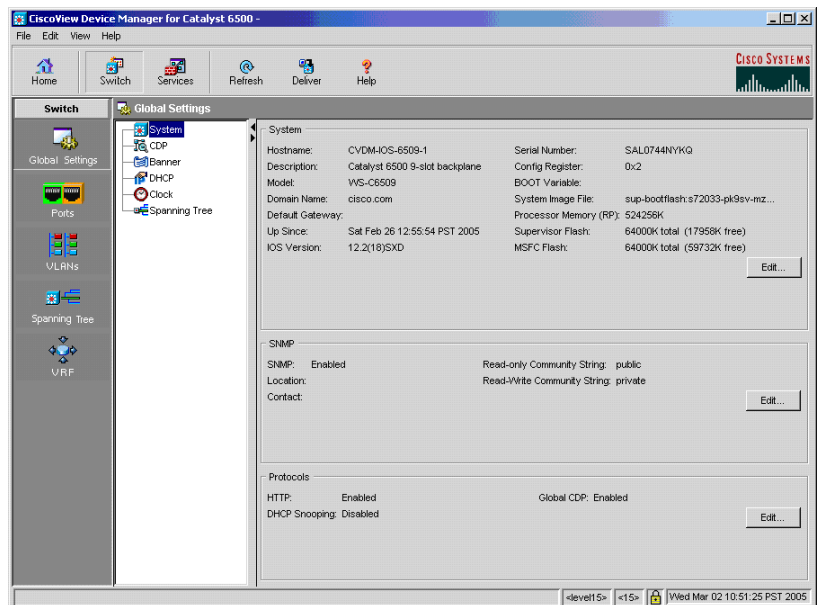
To view available Cisco service modules, see http://www.cisco.com/en/US/products/hw/modules/ps2706/prod_models_home.html.

For more information on the types of data that CVDM-C6500 can display for each service module, see [Chapter 9, “Service Module Setup.”](#)

What Does the Switch Page Show Me?

The Switch page allows you to view and configure Layer 2 and Layer 3 switch features, such as port, VLAN, VRF, and spanning tree features. You can also edit your global settings from the Switch page (see [Figure 1-7](#)).

Figure 1-7 CVDM-6500 Switch Page



What Does the Services Page Show Me?

The Services page allows you to view and configure services running on the device. This page provides summary information about service modules. The Services page also provides a graphical view of VLANs across service modules and setup wizards that enable you to configure the services on the device (see [Figure 1-8](#)).

Figure 1-8 CVDM-C6500 Services Page

VLAN ID	VLAN Name	IP Address/Mask	Crypto Map	Admin Status	Type
36	insidevlan	72.72.72.72/24		up	Interface VLAN
37	outside			up	Port VLAN
38	outside38			up	Port VLAN

Understanding the CVDM-C6500 Desktop

This section describes the main GUI elements of the CVDM-C6500 application.

Figure 1-9 CVDM-C6500 GUI Elements

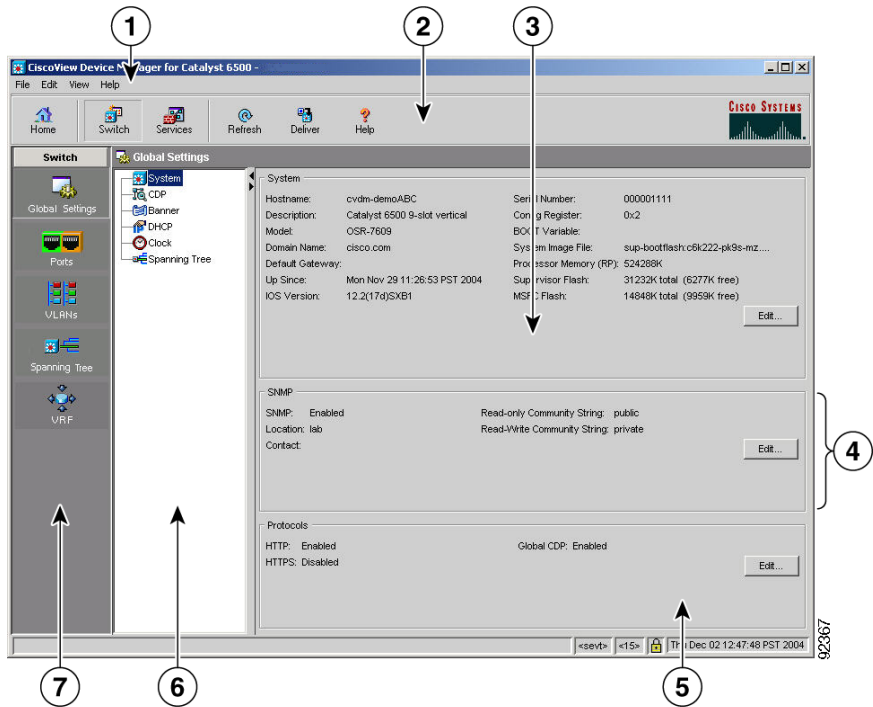


Figure 1-9 Reference	Location	Description
1	Menu bar	<p>Provides File, Edit, View, and Help options.</p> <ul style="list-style-type: none"> • File <ul style="list-style-type: none"> – File > Save to Startup—Saves the configuration running on the device and on the service modules as the startup configuration. For more information, see Saving Startup Configurations, page 1-23. – File > Exit—Logs you out of CVDM-C6500 and closes the application window. • Edit <ul style="list-style-type: none"> – Edit > Credentials...—Displays the Enter Credentials dialog box. For more information, see Understanding User Credentials, page 1-29. – Edit > Preferences...—Displays the Preferences dialog box from which you can edit application preferences. See Editing Preferences, page 1-23 for more information. • View <ul style="list-style-type: none"> – View > Home—Displays the Home page. See What Does the Home Page Show Me?, page 1-9 for more information. – View > Switch —Displays the Switch page. See What Does the Switch Page Show Me?, page 1-13 for more information. – View > Services—Displays the Services page. See What Does the Services Page Show Me?, page 1-14 for more information. – View > Running Config —Opens the Show Running Configuration dialog box for the supervisor card, SSL Services Module, FWSM, IDSM, NAM, WLSM, or CSM-S (only options for installed service modules can be selected). It displays information about the configuration running on the selected component. See Viewing the Running Configuration Information for a Device, page 1-25 for more information.

Figure 1-9 Reference	Location	Description
1 (continued)	Menu bar (continued)	<ul style="list-style-type: none"> • View (continued) <ul style="list-style-type: none"> – View > Refresh—Collects the most recent device information and updates the CVDM-C6500 data. See Refreshing CVDM-C6500, page 1-26 for more information. – View > Transport Log...—Displays the transport log of the device. The transport log displays all communication between CVDM-C6500 and the device. See Viewing the Device Transport Log, page 1-25 for more information. • Help <ul style="list-style-type: none"> – Help > Help Topics—Displays online help. – Help > About CVDM-C6500...—Displays CVDM-C6500 version information.
2	Task bar	<p>Provides the following buttons:</p> <ul style="list-style-type: none"> • Home—Displays the home page. See What Does the Home Page Show Me?, page 1-9 for more information on the home page. • Switch—Displays the Switch page for Layer 2 and Layer 3 switching. See What Does the Switch Page Show Me?, page 1-13 for more information on the Switch page. • Services—Displays the Services page for Layer 4 and higher services. See What Does the Services Page Show Me?, page 1-14 for more information on the Services page. • Refresh—Collects the most recent device information and updates CVDM-C6500 data. • Deliver—Opens the Deliver Configuration to Switch/Module(s) dialog box, from which you can send accumulated CLI commands to the device. See Delivering CLI Commands to the Device, page 1-26 for more information. • Help—Displays context-sensitive help. <p>Note The task bar displays the Chassis button if Embedded CiscoView is installed with CVDM-C6500. For more information, see Starting Embedded CiscoView from CVDM-C6500, page 1-20.</p>

Figure 1-9 Reference	Location	Description
3	Page	CVDM-C6500 working area in which you perform tasks.
4	Pane	One part of a divided page or dialog box.
5	Status bar	Provides the following information: <ul style="list-style-type: none"> • Application user and privilege level. • Icon showing the security level of the connection. • Time stamp showing the last time CVDM-C6500 collected data.
6	Selector	Hierarchy of the groups and objects available in the Switch or Services page that allows you to access specific functions for a switch or service object. See Selector, page 1-18 for more information.
7	Left-most pane	Contains buttons, on the Switch or Services page, that allow you to access switch or services functions.

Selector

The selector is a tree that appears on most Switch and Services pages. [Figure 1-10](#) shows what the selector looks like when folders, subfolders, and objects are displayed. Not all selectors contain all of these elements.

Figure 1-10 Selector

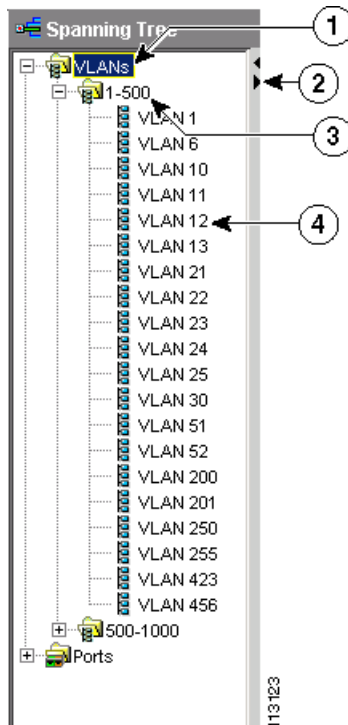


Figure 1-10 Reference	Location	Description
1	Group folder	Displays a group of objects. Click the plus (+) symbol to see the contents of this folder.
2	Selector handle	Click the handle to open and close the selector, or click the handle and drag it to resize it.
3	Subgroup folder	Displays a subgroup of objects. Click the plus (+) symbol to see the contents of this folder.
4	Object	Displays the individual entity contained in the group or subgroup. Click an object to open the page for that object.

Understanding the Action Buttons

This section describes the action buttons that commonly appear in CVDM-C6500 dialog boxes and wizards. For a description of the wizard action buttons, see [Table 1-2](#); for a description of the dialog box action buttons, see [Table 1-3](#).

Table 1-2 Wizard Action Buttons

Button	Action
Back	Takes you to the previous page.
Next	Takes you to the next page.
Finish	Takes you to the wizard summary page.
Cancel	Exits the wizard without making any changes.
Help	Displays context-sensitive online help.

Table 1-3 Dialog Box Action Buttons

Button	Action
OK	Saves your changes.
Cancel	Exits the dialog box without making any changes.
Help	Displays context-sensitive online help.

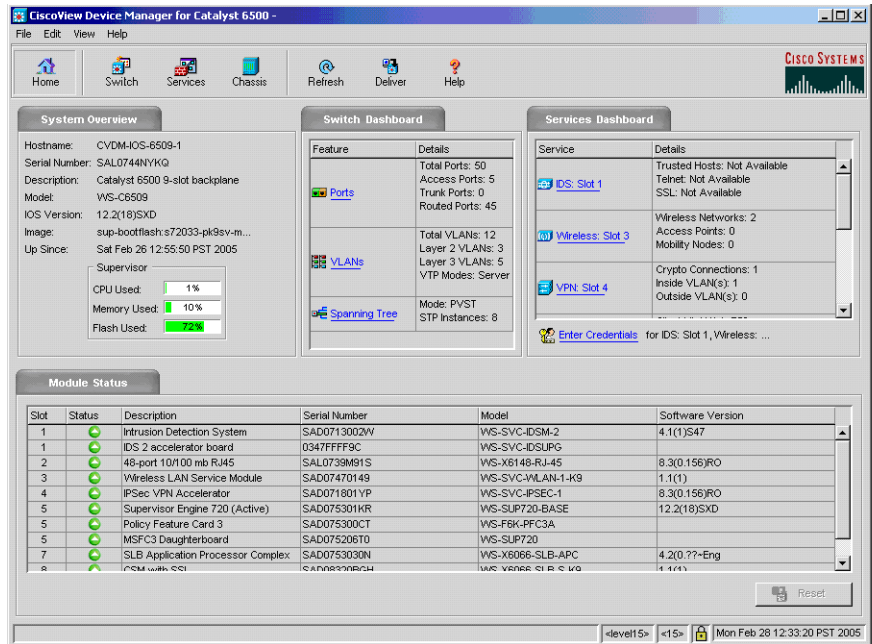


Note Some dialog boxes may contain additional buttons not described in this table.

Starting Embedded CiscoView from CVDM-C6500

If Embedded CiscoView is installed, you can start Embedded CiscoView from CVDM-C6500. The Chassis button is displayed in the [task bar](#) when Embedded CiscoView is installed (see [Figure 1-11](#)).

Figure 1-11 CVDM-C6500 Home Page with Chassis Button



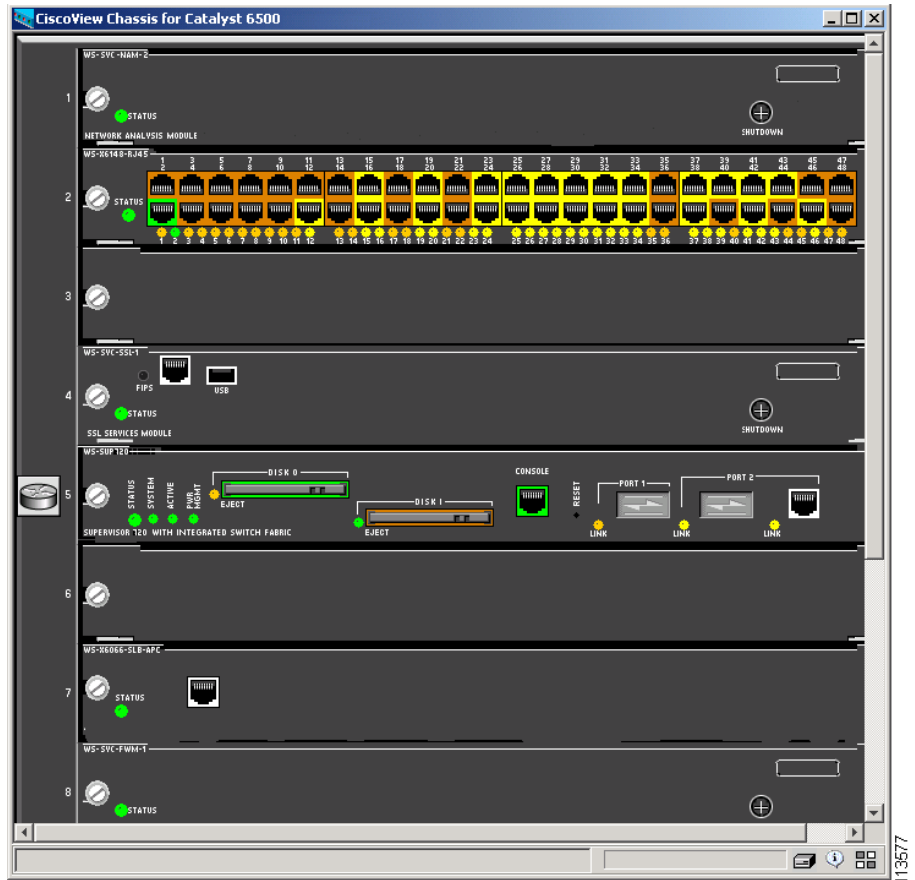
Step 1 Click the **Chassis** button at the top of the window. The Community String dialog box appears.

Step 2 Edit the appropriate values:

GUI Element	Action/Description
Read Community field	Enter the read community string.
Write Community field	Enter the write community string.

Step 3 Click **OK**. CiscoView starts (see Figure 1-12).

Figure 1-12 CiscoView



To download Embedded CiscoView and to obtain Embedded CiscoView documentation, go to:

<http://www.cisco.com/kobayashi/sw-center/netmgmt/ciscoview/embed-cview-planner.shtml>.

Saving Startup Configurations

You can save your device and service module configuration as the startup configuration.

-
- Step 1** Select **File > Save to Startup**. A warning dialog box appears, asking if you want to continue.
- Step 2** To proceed, click **Yes**. CVDM-C6500 saves the configuration as your startup configuration.
-

Editing Preferences

-
- Step 1** Select **Edit > Preferences...** The Preferences dialog box appears.
- Step 2** Edit the appropriate values:

GUI Element	Action
Show CLI Preview for Wizards check box	<p>Select this check box if you want CVDM-C6500 to display the CLI commands to be delivered to the device after you have completed a wizard. By default, this check box is deselected.</p> <p>When this check box is selected, when you click Finish in a wizard, the Deliver Configuration to the Switch/Module(s) dialog box opens and displays the CLI commands. For more information, see Delivering CLI Commands to the Device, page 1-26.</p>
Show CLI Preview on Delivery check box	<p>Select this check box if you want CVDM-C6500 to display the CLI commands to be delivered to the device. By default, this check box is selected.</p> <p>When this check box is selected, if you click Deliver, then the Deliver Configuration to Switch/Module(s) dialog box opens and displays the CLI commands. For more information, see Delivering CLI Commands to the Device, page 1-26.</p>
Refresh After Delivery check box	<p>Select this check box to automatically refresh CVDM-C6500 after you deliver commands to the device. Refreshing CVDM-C6500 allows you to obtain the latest service module information and update the CVDM-C6500 data. By default, this check box is selected.</p> <p>When this check box is deselected, when you click Finish in a wizard, CVDM-C6500 prompts you to optionally refresh the application after delivering commands to the device. For more information, see Refreshing CVDM-C6500, page 1-26.</p>
Confirm before Exiting check box	<p>Select this check box if you want CVDM-C6500 to ask you to confirm that you want to exit the application. By default, this check box is selected.</p> <p>When this check box is selected, CVDM-C6500 displays a dialog box asking you if you want to exit CVDM-C6500. From this dialog box, you can select the Always display this dialog box before exiting check box if you always want CVDM-C6500 to confirm that you want to exit CVDM-C6500.</p>

Viewing the Running Configuration Information for a Device

Step 1 Select **View > Running Config**, then select one of the following:

- **Supervisor...**
- **SSL: Slot X...**
- **Firewall: Slot X...**
- **NAM: Slot X...**
- **IDS: Slot X...**
- **WLSM: Slot X...**



Note Only options for installed service modules are available to be selected.

Step 2 The Show Running Configuration dialog box appears. Information about the running configuration for the selected component is displayed.

You can click the **Save to File...** button to save this information as a text file.

Viewing the Device Transport Log

Step 1 Select **View > Transport Log...** A warning dialog box appears.

Step 2 To proceed, click **OK**. The Transport Log dialog box appears, displaying information about communication between CVDM-C6500 and the device. You can do the following:

- Click **Clear Log** to clear the information in the transport log.
 - Click **Save to File...** to save the transport log information as a text file.
-

Refreshing CVDM-C6500

You can refresh CVDM-C6500 at any time to obtain the latest device and service module information and update the CVDM-C6500 data.



Note You can specify that CVDM-C6500 automatically refresh after you deliver commands to the device; see [Editing Preferences, page 1-23](#) for more information.

-
- Step 1** Click **Refresh** at the top of the window or select **View > Refresh** from the Menu bar.
- Step 2** A dialog box appears, asking if you want to proceed with the refresh. To proceed, click **Yes**. The most recent device information is collected and is populated in CVDM-C6500.
-

Delivering CLI Commands to the Device



Note You must deliver accumulated CLI commands to the device before any changes you make in CVDM-C6500 will be applied.

-
- Step 1** Click the **Deliver** button at the top of the window. The Deliver Configuration to Switch/Module(s) dialog box appears if you have configured CVDM-C6500 to display the accumulated CLI commands when you click the **Deliver** button (for more information on configuring this option, see [Editing Preferences, page 1-23](#)).



Note The Deliver Configuration to Switch/Module(s) dialog box also appears when you click the **Finish** button in a wizard if you have configured CVDM-C6500 to display the accumulated CLI commands after you have completed a wizard.

- Step 2** Edit the appropriate values.

GUI Element	Action
Window	Displays the accumulated CLI commands to be delivered to the device.
Deliver button	Click to send the accumulated CLI commands to the device.
Save to File... button	Click to save the CLI commands as a text file.
Close button ¹	Close the dialog box without delivering any CLI commands.
Deliver Later button ²	Click to deliver the wizard CLI commands to the device at a later time.

1. This button is available only in the Deliver Configuration to Switch/Module(s) dialog box that is displayed after you click **Deliver** at the top of the window.
2. This button is available only in the Deliver Configuration to Switch/Module(s) dialog box that is displayed after you click **Finish** in a wizard.

**Note**

The Deliver Configuration to Switch/Module(s) dialog box displays *all* accumulated CLI commands that will be delivered to the device; therefore, any previous CLI commands that were not sent to the device are shown in this dialog box, as well as the CLI commands you have generated in this session.

Resetting Service Modules

- Step 1** From the CVDM home page, select the service module you want to reset in the table in the [Module Status pane](#).
- Step 2** Click **Reset**. A dialog box appears.
- Step 3** To proceed, click **Yes**. A dialog box appears.

Step 4 To proceed, click **Yes**.

CVDM-C6500 issues the command:

```
hw-module module n reset
```

Step 5 Refresh CVDM-C6500 to obtain the current state of the device. See [Refreshing CVDM-C6500, page 1-26](#) for more information.

Understanding Your User Role

CVDM-C6500 can be used by three types of users: Network Operations, Security Operations, and Super Admin users. CVDM-C6500 is structured so that functions specific to each type of user are consolidated in a single place in the application. For example, all of the Layer 2 and Layer 3 switch features are grouped under the Switch tab, and all of the services running on the device are grouped under the Services tab. Network Operations users will typically use the functions on the Switch page, while Security Operations users will typically use the functions on the Services page. Certain features are available only to a specific type of user:

- Network Operations users are typically responsible for configuring, maintaining, and managing connectivity between Layer 2 and 3 devices. Network Operations users can perform Layer 2 and 3 configuration functions but do not have access to Layer 4 and higher functions such as configuring security devices.
- Security Operations users are typically responsible for configuring, maintaining, and managing security devices such as SSL and firewalls. Security Operations users can configure the security on service blades and apply policies to them.
- Super Admin users have access to all CVDM-C6500 functionality. For example, these users can create VLANs on the supervisor, have access to service blade configurations, and can inspect and edit firewall VLAN interfaces.



Note

Your user role is based on device credentials. For more information, see [Understanding User Credentials, page 1-29](#).

Understanding User Credentials

CVDM-C6500 uses role-based access control, dependent upon device credentials. The following list provides important information about user roles and necessary credentials:

- If you do not have level 15 access to the device, CVDM-C6500 will not start.
- You must have level 15 access (Super Admin user privileges) to the device and its service modules to access all of the features of CVDM-C6500.
- If you have level 15 access to the supervisor card and some service modules, you can only edit the configuration of those service modules to which you have access. Although other service modules may be present on the device, you cannot make configuration changes or view all service module data.

After you start CVDM-C6500, CVDM-C6500 uses the device credentials to log into the device and populate data from the device. If you provide full credentials for all installed service modules, then data for all service modules are populated in CVDM-C6500.

However, if credentials are not available for one or more service modules, then data for the service modules are not populated in CVDM-C6500. To enter credentials for a service module, open the Enter Credentials dialog box and edit the appropriate values.

Step 1 Do one of the following:

- Click the **Enter Credentials** link on the Services Dashboard in the CVDM-C6500 home page.
- Click the **Enter Credentials** link on the SSL, Firewall, IDS, NAM, or WLSM page.
- Select **Edit > Credentials...** from the menu bar (you can open the Enter Credentials dialog box at any time from the menu bar).

Step 2 Edit the appropriate values.

GUI Element	Action/Description
IP Address pane	
IP Address check box	Device IP address; grayed out because you cannot edit this field.
Username	Supervisor card username; grayed out because you cannot edit this field.
Password	Supervisor card password; grayed out because you cannot edit this field.
Enable Username	Supervisor card username; grayed out because you cannot edit this field.
Enable Password	Supervisor card enable password; grayed out because you cannot edit this field.
SSL: Slot X pane	
SSL: Slot X check box	Click this check box to enter your SSL service module credentials, then enter the desired credentials.
Username	Enter your SSL service module username.
Password	Enter your SSL service module password.
Enable Username	Enter your SSL service module enable username.
Enable Password	Enter your SSL service module enable password.
Firewall: Slot X pane	
Firewall: Slot X check box	Click this check box to enter your Firewall service module credentials, then enter the desired credentials.
Username	Enter your Firewall service module username.
Password	Enter your Firewall service module password.
Enable Username	Enter your Firewall service module enable username.

GUI Element	Action/Description
Enable Password	Enter your Firewall service module enable password.
NAM: Slot X pane	
NAM: Slot X check box	Click this check box to enter your NAM service module credentials, then enter the desired credentials.
Username	Enter your NAM service module username.
Password	Enter your NAM service module password.
IDS: Slot X pane	
IDS: Slot X check box	Click this check box to enter your IDS service module credentials, then enter the desired credentials.
Username	Enter your IDS service module username.
Password	Enter your IDS service module password.
WLSM: Slot X pane	
WLSM: Slot X check box	Click this check box to enter your WLSM credentials, then enter the desired credentials.
Username	Enter your WLSM username.
Password	Enter your WLSM password.
Enable Username	Enter your WLSM enable username.
Enable Password	Enter your WLSM enable password.
CSM-S: Slox X pane	
CSM-S: Slot X check box	Click this check box to enter your CSM-S credentials, then enter the desired credentials. Note CSM-S credentials are used to log in to the SSL portion of the CSM-S.
Username	Enter your CSM-S username.
Password	Enter your CSM-S password.
Enable Username	Enter your CSM-S enable username.
Enable Password	Enter your CSM-S enable password.

**Note**

Only fields for installed service modules are displayed in this dialog box.

After you provide the credentials, CVDM-C6500 populates the corresponding Services pages and the Services Dashboard rows in the home page with the service module data. If the page for the service module is displayed when you enter the corresponding credentials, CVDM-C6500 refreshes the page and displays the service module data.

If you do not provide credentials for all service modules, CVDM-C6500 displays only partial information for the service modules. In addition, the Services Dashboard on the CVDM-C6500 home page does not display information for the service modules, and the corresponding services page displays only partial data.

If the supervisor credentials are changed through CLI while a CVDM-C6500 session is open, a dialog box appears and prompts for the new credentials during a refresh or delivery if there is no active CVDM-C6500 session to the supervisor; if there is an active session to the supervisor, CVDM-C6500 prompts for the new credentials when the application session times out or during a refresh or delivery.

Clicking **Cancel** in this dialog box closes CVDM-C6500; if you enter the wrong credentials, CVDM-C6500 prompts you again to enter the correct credentials. If you enter incorrect credentials a second time, CVDM-C6500 closes. You will not be able to edit the supervisor credentials through the Credentials dialog box.

If the credentials are changed on a service module after its data has been populated in CVDM-C6500, a dialog box appears and prompts for the new credentials during a refresh or delivery. If you enter the wrong credentials, CVDM-C6500 prompts you again to enter the correct credentials. If you enter the incorrect credentials a second time, or if you click **Cancel** in this dialog box, CVDM-C6500 refreshes and does not populate any data for the service module. You must enter the correct credentials in the Credentials dialog box to populate the data.

If you are prompted to enter the new credentials while delivering commands to the device and you click **Cancel** or enter the incorrect credentials, commands will not be delivered to the device and data for the service module will not be populated.

What's Next?

If your main task is to manage port, VLAN, and spanning tree configurations, then almost all of your operations can be performed using the Switch tab. If your main task is to manage and configure service modules on the device, then your operations can be performed using the Services tab.

Table 1-4 Quick Reference

If you want to...	Then see...
View and edit global switch settings	Chapter 2, “System Settings (Switch > System)”
Configure physical ports and logical interfaces	Chapter 3, “Ports/Interface Management (Switch > Ports)”
Configure VLANs and VTPs	Chapter 4, “VLAN and VTP Management (Switch > VLANs)”
Configure VLAN and port STP settings	Chapter 5, “Spanning Tree Settings (Switch > Spanning Tree)”
Configure VRF settings	Chapter 6, “VPN Routing and Forwarding Instances Management (Switch > VRFs)”
Set up service modules	Chapter 9, “Service Module Setup”

