



CHAPTER 5

UC500 and SR500 Secure Router Setup

The Cisco SR500 provided asymmetric digital subscriber line (ADSL) or FastEthernet WAN termination and advanced security features for a Cisco Smart Business Communications System (SBCS) network. This document describes how to connect a Cisco UC500 behind a Cisco SR500 in secure router mode. It includes the following sections:

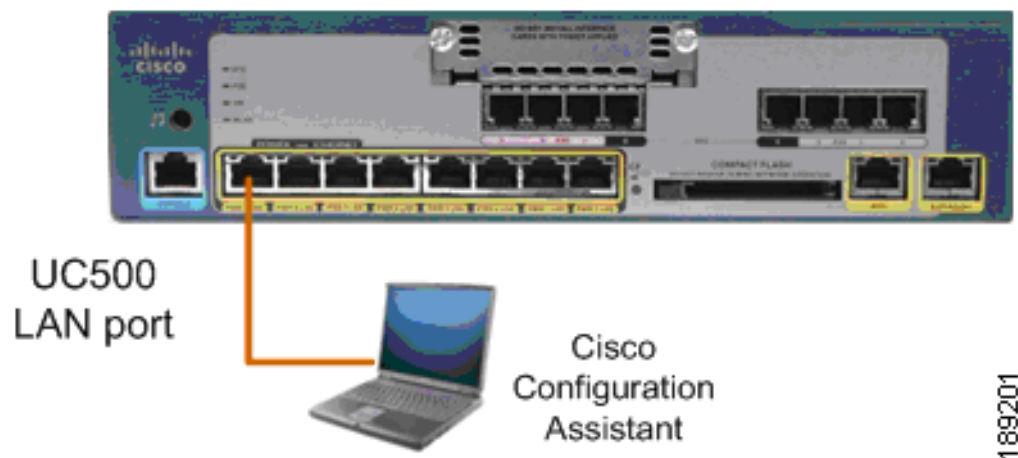
- [Configuring the Cisco UC500](#)
- [Configuring the Cisco SR500](#)
- [Creating a Community](#)

Prerequisites:

- UC500 Series Router
- SR500 Series Router
- A PC with an operating system that supports Cisco Configuration Assistant: Windows Vista Ultimate, or Windows XP, Service Pack 1 or later
- Cisco Configuration Assistant with version 1.8 or higher installed

Connect your Cisco UC500 to a Windows PC, as shown in [Figure 5-1](#).

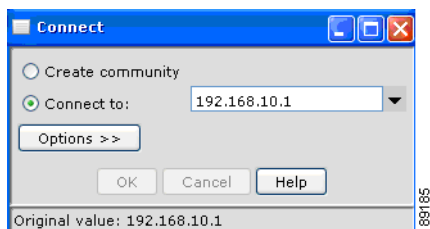
Figure 5-1 Cisco UC500 Connection



Configuring the Cisco UC500

Network address translation (NAT) is not required on the UC500 in this configuration, because the SR500 manages NAT for the network. To configure the Cisco UC500 using CCA, do the following:

- Step 1** Enter the Cisco UC500 LAN IP address in the Connect to field on the **Connect** window.

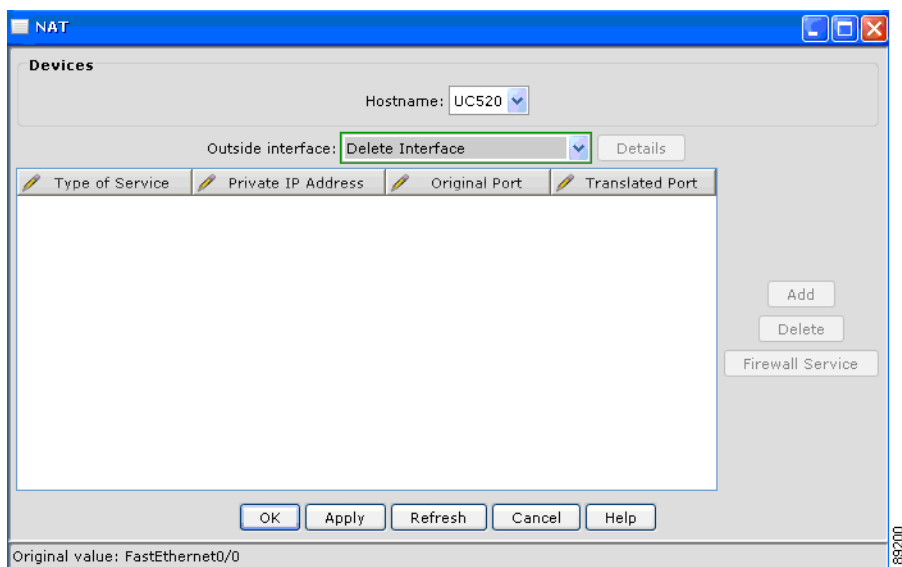


- Step 2** Enter your Cisco UC500 administrator username and password.

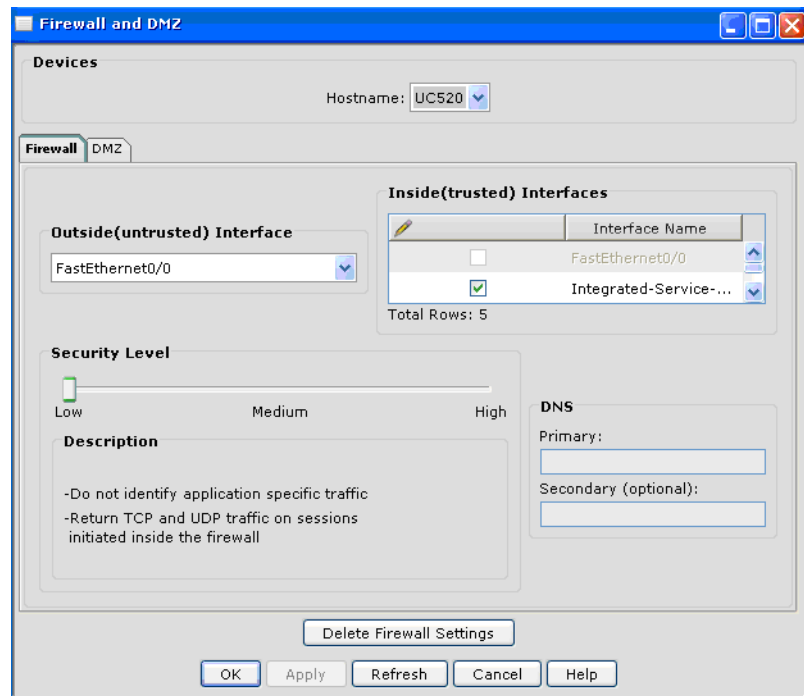
- Step 3** Go to **Configure > Security > NAT**.

- Step 4** From the **Outside Interface** menu on the NAT window, select **Delete Interface**.

- Step 5** Click **Apply** to disable NAT on the UC500. (The Cisco SR500 will NAT incoming and outgoing Internet traffic; the Cisco UC500 does not require that NAT is enabled.)



- Step 6** Go to **Configure > Security > Firewall and DMZ**.



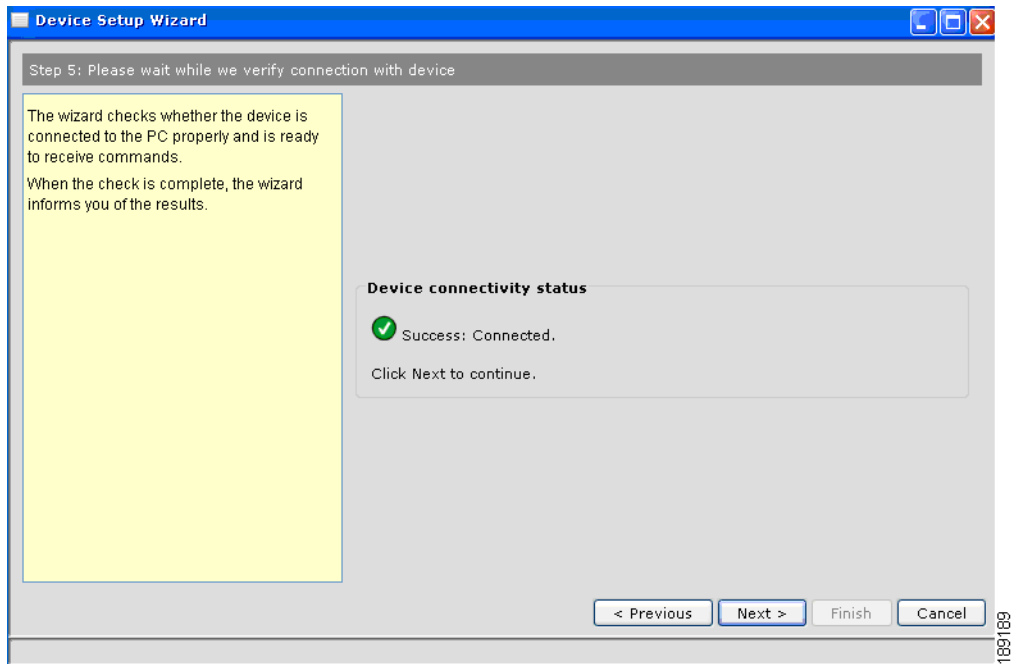
Step 7 Click **Delete Firewall Settings**.

Step 8 Click **Yes** to clear the warning message. This deletes the firewall settings from Cisco UC500. A firewall is not required on Cisco UC500, because the Cisco SR500 provides a firewall for the network.

Step 9 Go to **Setup > Device Setup Wizard**.

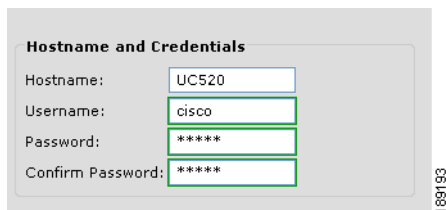
Step 10 Select **UC500** from the menu and click **Next**.

Step 11 Click **Next** until device connectivity is verified. It might take 2-3 minutes to verify the device connectivity.

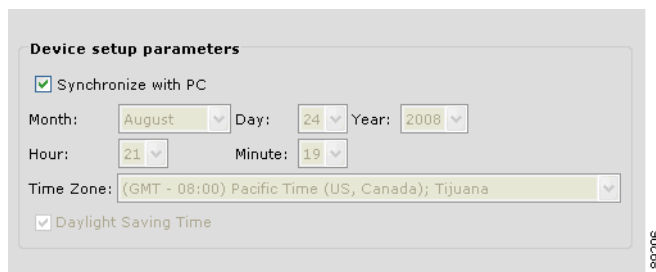


Step 12 Click Next.

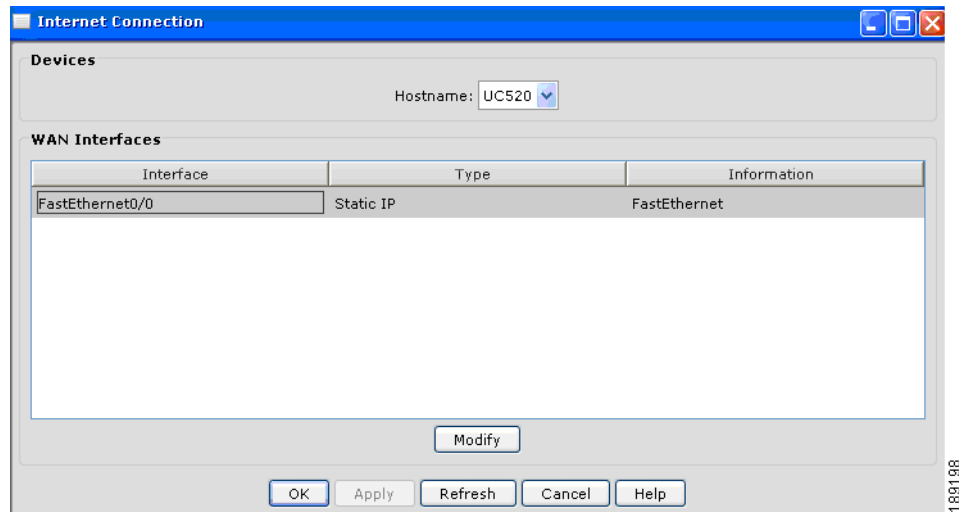
Step 13 Enter your UC500 administrator username and password. The default username is **cisco**. The default password is **cisco**.



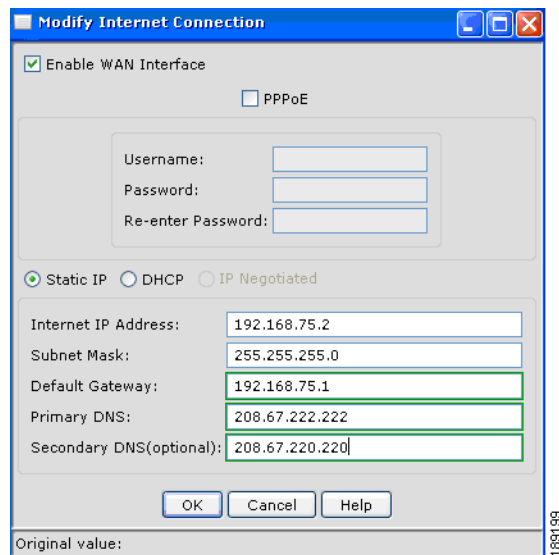
Step 14 Click Next.



Step 15 Verify that the **Synchronize with PC** checkbox is checked. This synchronizes the time and date settings on the UC500 with your PC and click **Next**.



Step 16 Select **Fastethernet0/0** and click **Modify**.



Step 17 In the Internet IP Address field, enter **192.168.75.2**.

Step 18 Choose **Static IP**.

Step 19 Enter the **Primary DNS** IP address and the **Secondary DNS** IP address that match the DNS server IP addresses used in your network and click **OK**.

VLAN1 IP address assignment

IP Address: 192.168.10.1
Subnet Mask: 255.255.255.0

DHCP Pool

Network: 192.168.10.1
Subnet Mask: 255.255.255.0
Primary DNS: 208.67.222.222
Secondary DNS(optional): 208.67.220.220
Default Gateway: 192.168.10.1

DHCP Exclusions

Start IP Address: 192.168.10.1
End IP Address: 192.168.10.10

< Previous Next > Finish Cancel

189208

Step 20 Click **Next**.

Local Settings

Region: United States
Phone Language: US English
Voicemail Language: US English
Location of Language Files: isco Configuration Assistant\appdata\phoneloads\

189197

Step 21 Select your language from the **Phone Language** menu, and voicemail language.

Step 22 Select your language **Voicemail Language** menu.

Step 23 Click **Next**.

Summary

Hostname: UC520
 Username: cisco
 Region: United States
 Phone Language: US English
 Voicemail Language: US English

VLAN1 Summary

IP Address

IP Address: 192.168.10.1
 Subnet Mask: 255.255.255.0

DHCP Server

Network: 192.168.10.1
 Subnet Mask: 255.255.255.0
 Primary DNS: 208.67.222.222
 Secondary DNS(optional): 208.67.220.220
 Default Gateway: 192.168.10.1

DHCP Exclusions

Start IP Address: 192.168.10.1
 End IP Address: 192.168.10.10

Warning

The setup process may take up to 10 minutes

< Previous Next > Finish Cancel

Step 24 Verify your settings. To make any changes, click **Previous**; otherwise, click **Finish**.

Step 25 Click **Yes** when the warning displays.



Note If you retained the VLAN 1 IP address of 192.168.10.1, Cisco Configuration Assistant does not lose connectivity to the Cisco UC500 and applies the configuration settings to the Cisco UC500. This process can take 8-10 minutes

Once the process is complete, you should see the following message.

Finish status

✓ Success: The settings have been applied to the device.
 Press Close to exit.

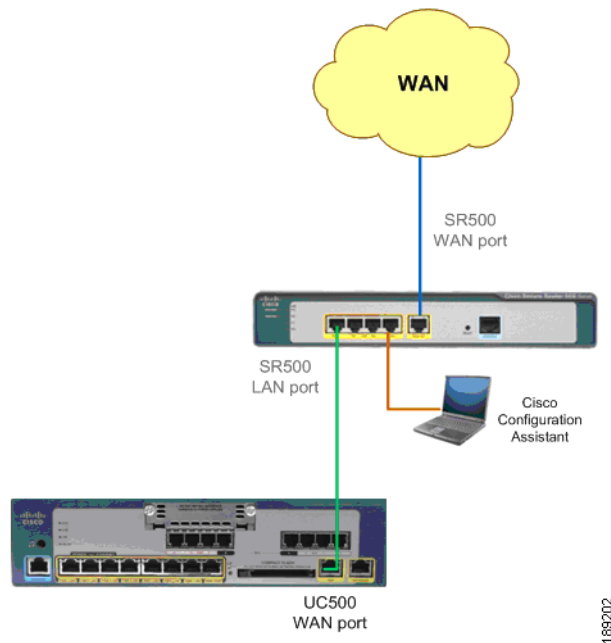
Step 26 Click **Close** to exit the setup wizard.

Step 27 Go to **Configure > Save Configuration** and click **Save**.

Configuring the Cisco SR500

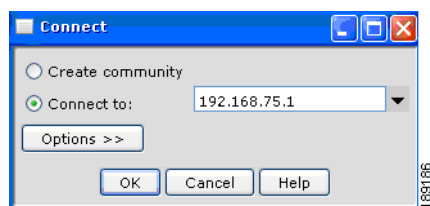
Connect your Cisco UC500, Cisco SR500, and Windows PC as shown in [Figure 5-2](#).

Figure 5-2 Cisco UC500, Cisco SR500, and Windows PC Connection



Your Internet/WAN connection might be an ADSL or an Ethernet connection, depending on the Cisco SR500 chassis type.

Step 1 Enter the SR500 LAN IP address in the **Connect to** field in Cisco Configuration Assistant.



If your connection is rejected, it might be necessary to manually release and renew your DHCP lease to obtain an IP address from the Cisco SR500, by doing the following:

1. To open a **Run** window, select **Start > Run**.
2. Enter **CMD** in the Open field to launch a Windows Command window.
3. Enter **ipconfig /release** at the Windows command prompt.

4. Enter **ipconfig /renew** at the Windows command prompt. You should get an IP address that is in the 192.168.75.xxx network. For example:

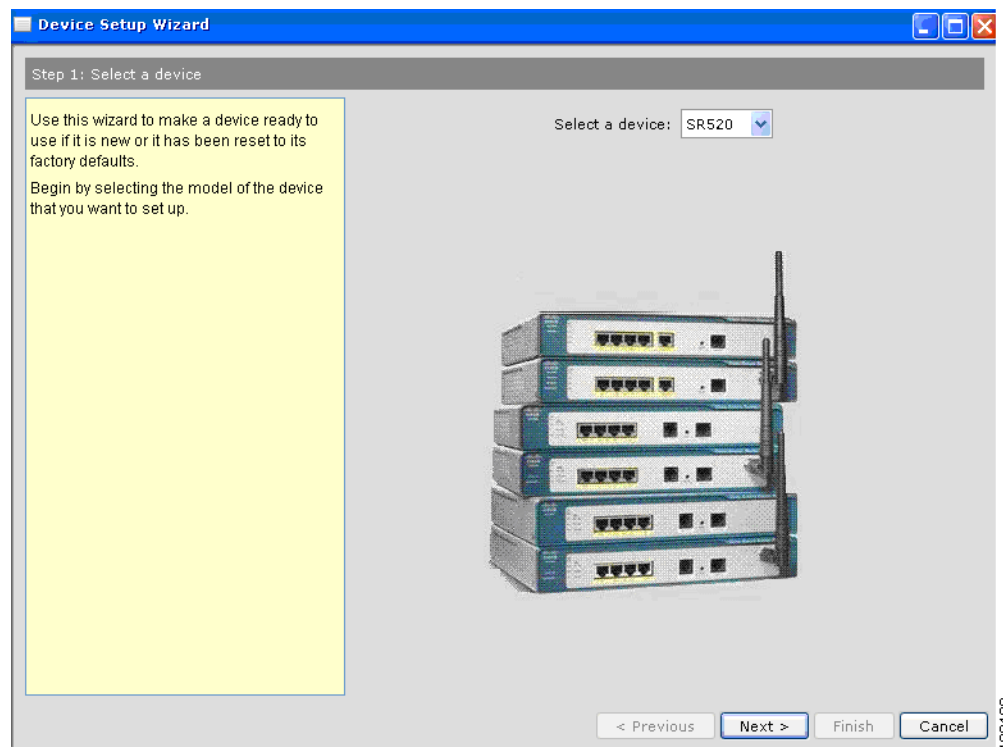
```
C:\temp>ipconfig /renew
```

```
Windows IP Configuration
```

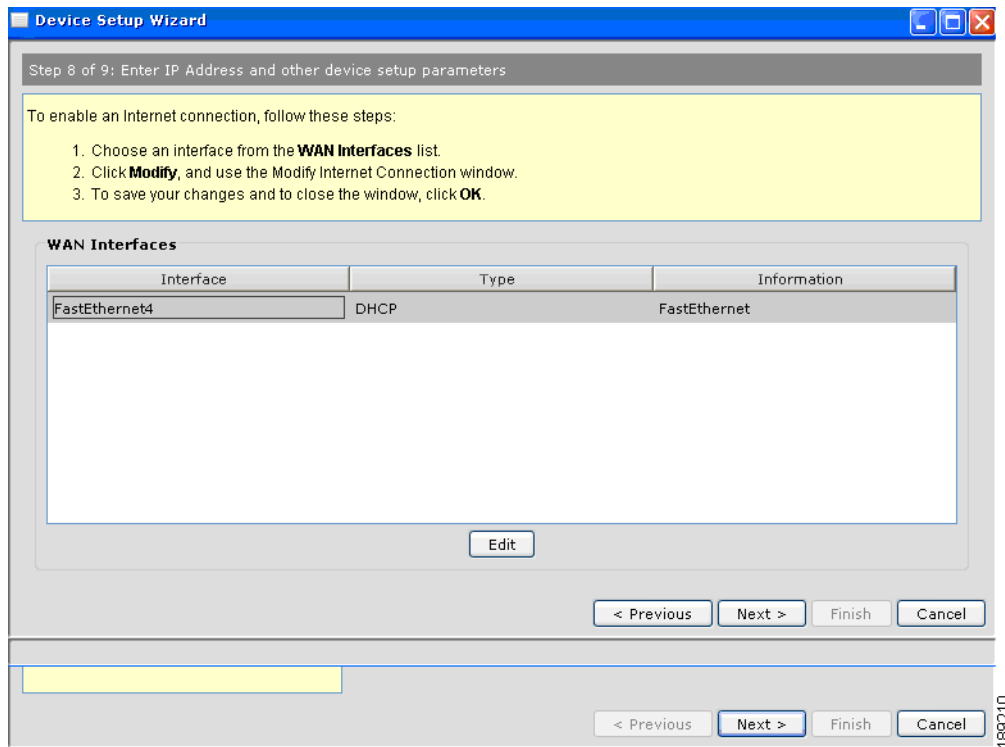
```
Ethernet adapter Local Area Connection:
```

```
Connection-specific DNS Suffix . : cisco.com
IP Address. . . . . : 192.168.75.11
Subnet Mask . . . . . : 255.255.255.0
Default Gateway . . . . . : 192.168.75.1
```

- Step 2 Go to **Setup > Device Setup Wizard**.

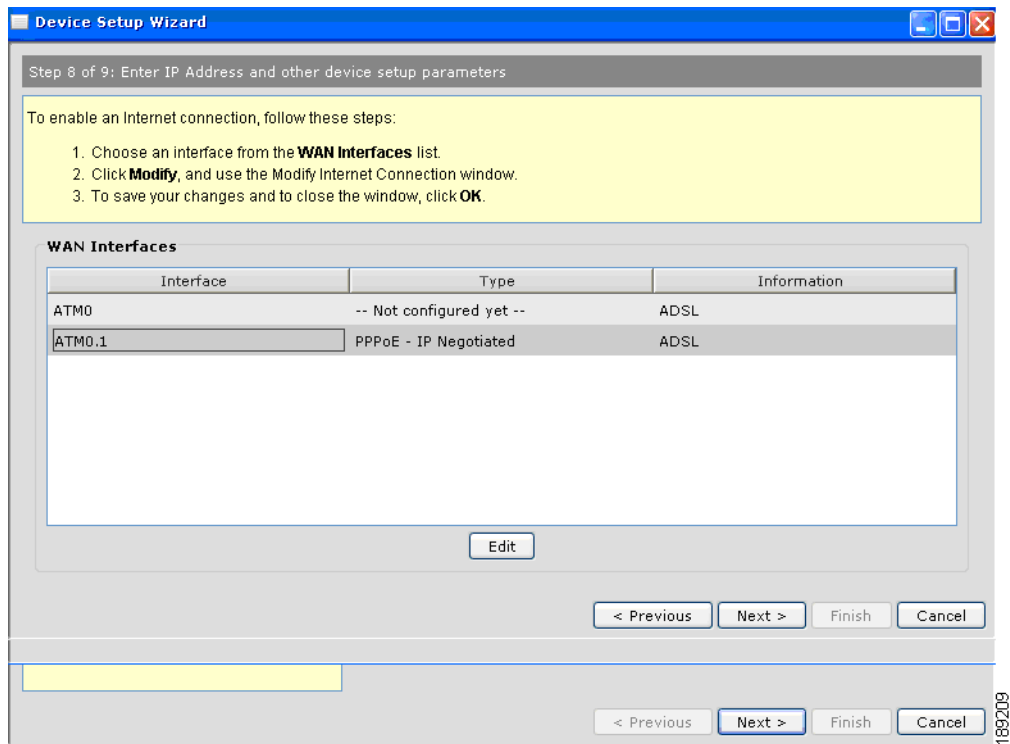


- Step 3 From the **Select a device** menu, select **SR500** and click **Next**.
- Step 4 Click **Next** until device connectivity is verified. It might take 2-3 minutes to verify the device connectivity.
- Step 5 Enter your Cisco SR500 administrator username and password. The default username is **admin**. The default password is **admin**.
- Step 6 Verify that the **Synchronize with PC** checkbox is checked. This synchronizes the time and date settings on the UC500 with your PC and click **Next**.
- Step 7 If you are using WAN FastEthernet, the following window displays:



Select **Fastethernet4** and click **Edit**.

If you are using ADSL, the following window displays:



Select **ATM0.1** and click **Edit**.

- Step 8** Specify your Cisco SR500 Internet connection settings and click **OK**. These settings vary depending on which provider and what WAN type you are using to connect to the Internet. For example:

DHCP with FastEthernet

The screenshot shows the 'Modify Internet Connection' dialog box. At the top, it says 'Please delete NAT/VPN/Firewal to enable this button'. Below that, there is a checkbox for 'Enable WAN Interface' which is checked. There is an unchecked checkbox for 'PPPoE'. Underneath, there are three text input fields: 'Username:', 'Password:', and 'Re-enter Password:'. Below these fields are three radio buttons: 'Static IP', 'DHCP' (which is selected), and 'IP Negotiated'. At the bottom, there are three more text input fields: 'Internet IP Address:', 'Subnet Mask:', and 'Default Gateway:'. At the very bottom are three buttons: 'OK', 'Cancel', and 'Help'. A small vertical number '188194' is visible on the right side of the dialog box.

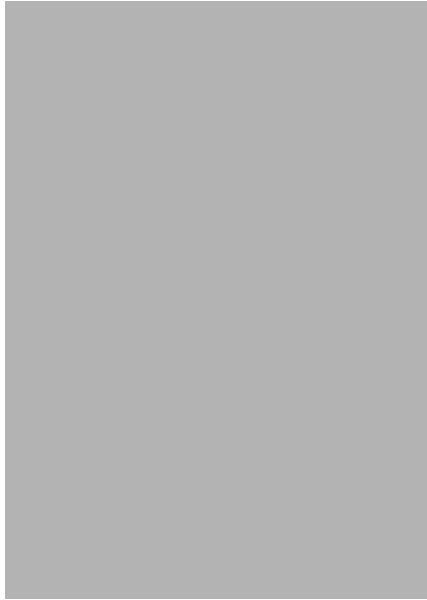
PPPoE with FastEthernet.

The username and password should match the account information provided by your Internet service provider.

The screenshot shows the 'Modify Internet Connection' dialog box with different settings. The 'Enable WAN Interface' checkbox is checked. The 'PPPoE' checkbox is now checked. The 'Username:' field contains 'adslmodemuser', the 'Password:' field contains '*****', and the 'Re-enter Password:' field contains '*****'. The radio buttons are 'Static IP', 'DHCP', and 'IP Negotiated' (which is selected). The 'Internet IP Address:', 'Subnet Mask:', and 'Default Gateway:' fields are empty. The 'OK', 'Cancel', and 'Help' buttons are at the bottom. A small vertical number '188195' is visible on the right side of the dialog box.

PPPoE with ADSL.

The username and password should match the account information provided by your Internet service provider.



Step 9 Click **Next**. Verify your settings. To make any changes, click **Previous**; otherwise click **Finish**. After 1-2 minutes, the Summary message displays.

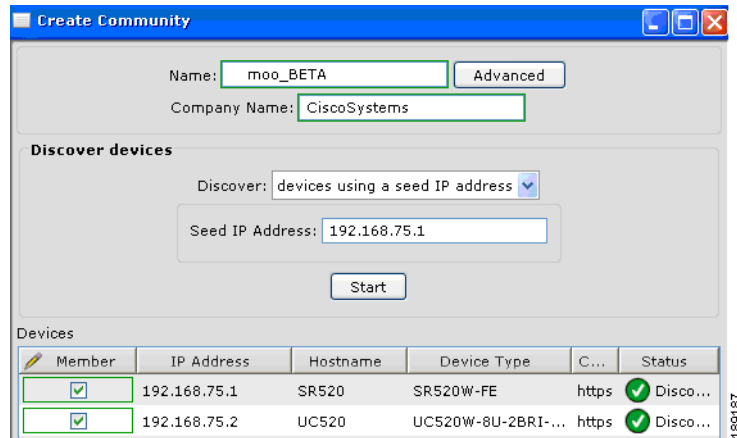


Step 10 Click **Close**.
The configuration of the Cisco SR500 is complete.

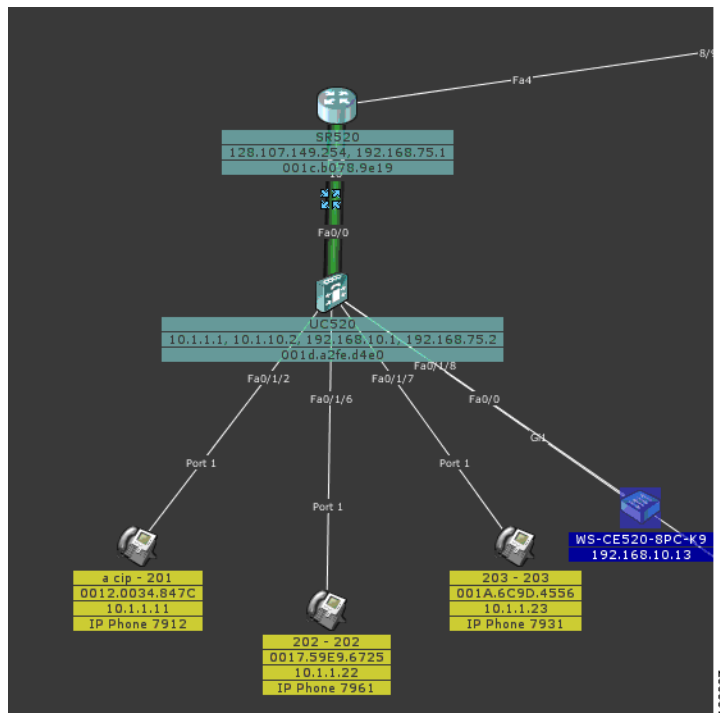
Creating a Community

To create a community that includes both the Cisco UC500 and the Cisco SR500, do the following:

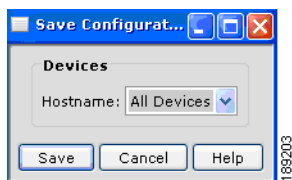
- Step 1** Start Configuration Assistant, and select **Create community** in the Connect window. Click **Connect**.
- Step 2** In the **Create Community** window, enter a name for the community.



- Step 3** Enter the Cisco SR500 IP address in the Seed IP Address field. Click **Start**.
- Step 4** When prompted, enter the Cisco UC500 and the Cisco SR500 administrator usernames and passwords. Click **OK**.
- Step 5** In Topology view, verify that the Cisco UC500 is connected behind the Cisco SR500.



- Step 6** Go to **Configure > Save Configuration**.
- Step 7** Select **All Devices** in the **Hostname** menu. Click **Save**.



The configuration is complete.

You can now connect your Cisco Configuration Assistant PC to any LAN port on the Cisco UC500 or Cisco SR500 to access the community you created, allowing you to monitor the network and modify the device configurations.

You should connect all LAN devices, such as PCs, IP phones, printers, switches, and access points, to the Cisco UC500 LAN ports to access the WAN or the Internet from the LAN devices. LAN devices connected to the UC500 have secure access to the WAN and the Internet, because they are protected by the security features you enabled on the Cisco SR500.

You might choose to connect DMZ devices, such as Web servers or email servers, to the Cisco SR500.