



## Configuring a Laptop for Room Mapping

---

This section details the configuration of a laptop computer that is being used for room mapping.

### Configuring a Laptop

To perform room mapping, you need a laptop that meets the following specifications:

- Windows 95, 98, Me, Windows 2000 Professional, or NT 4.0 Workstation
- A network interface card (NIC) that is configured to use TCP/IP with DHCP enabled and DNS disabled. (For Windows 2000 Professional, set it to obtain a DNS server address automatically.)
- One of these web browser releases: Internet Explorer 4.0 or higher, or Netscape 4.8 or higher



---

**Caution** If you use Netscape for your web browser, because of known compatibility issues with Netscape 4.7x and earlier, you must use Netscape 4.8 or higher for BBSM to work properly.

---

- All proxy server access to the Internet turned off



**Note**

---

The laptop can remain turned on as you go from room to room.

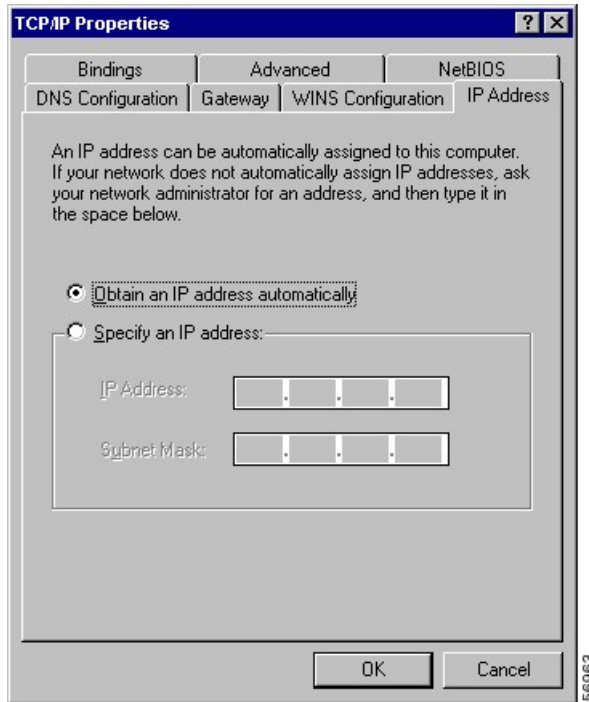
---

### Windows 95, 98, or Me

Use the following procedure for setting up a laptop using Windows 95, 98, or Me.

- 
- Step 1** From your desktop, right-click **Network Neighborhood**.
  - Step 2** Click **Local Area Connection**.
  - Step 3** Click **Properties**.
  - Step 4** Select the **Configuration** tab.
  - Step 5** Choose the TCP/IP protocol for your network interface card (Windows 95/98/NT4.0).
  - Step 6** Click **Properties**. (See [Figure G-1](#).)

Figure G-1 TCP/IP Properties



- Step 7** Select the **IP Address** tab.
- Step 8** Click the **Obtain an IP address automatically** radio button.
- Step 9** Select the **Gateway** tab.
- Step 10** Remove all gateway addresses.
- Step 11** Select the **DNS Configuration** tab.
- Step 12** Select **Disable DNS**.
- Step 13** Click **OK** to close the TCP/IP Properties window.
- Step 14** Click **OK** to close the Network or General window.



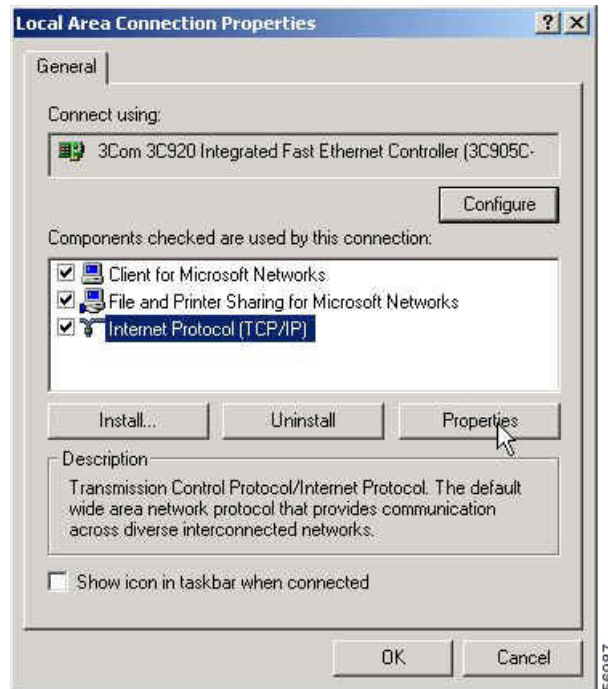
**Note** If you receive a request to copy files from your Windows CD, follow the on-screen instructions.

- Step 15** If a dialog box appears to restart, click **Yes**.

## Windows 2000

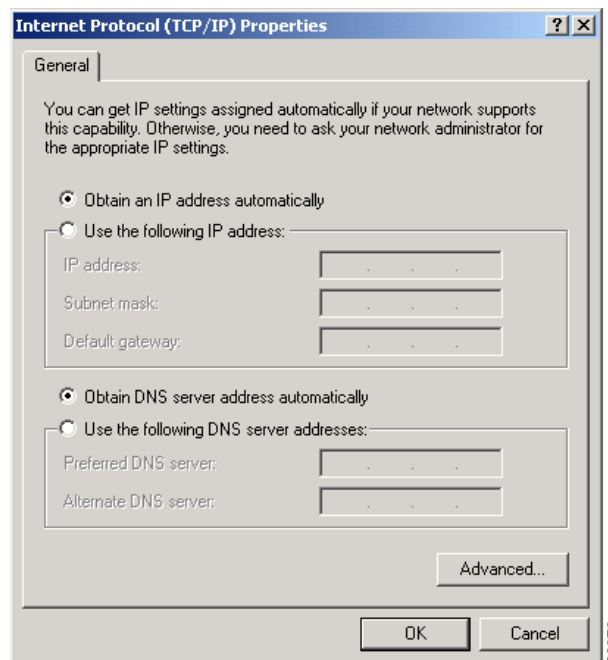
Use the following procedure for setting up a laptop using Windows 2000.

- Step 1** Choose **Start > Settings > Network and Dial-up Connections > Local Area Connection**.
- Step 2** Click **Properties**. (See [Figure G-2](#).)

**Figure G-2 Local Area Connection Properties Window**

**Step 3** Highlight **Internet Protocol (TCP/IP)**, and click **Properties**.

**Step 4** Verify that Obtain an IP address automatically and Obtain a DNS server automatically are both selected, and click **OK**. (See [Figure G-3](#).)

**Figure G-3 Internet Protocol (TCP/IP) Properties Window**

- Step 5** Click **OK** to close the Internet Protocol (TCP/IP) Properties window.
- Step 6** Click **OK** to close the Local Area Connections Properties window.
- Step 7** Click **OK** to close the Local Area Connection Status window.



**Note** If you are using Windows 2000, no reboot is necessary.

## Configuring the Browser

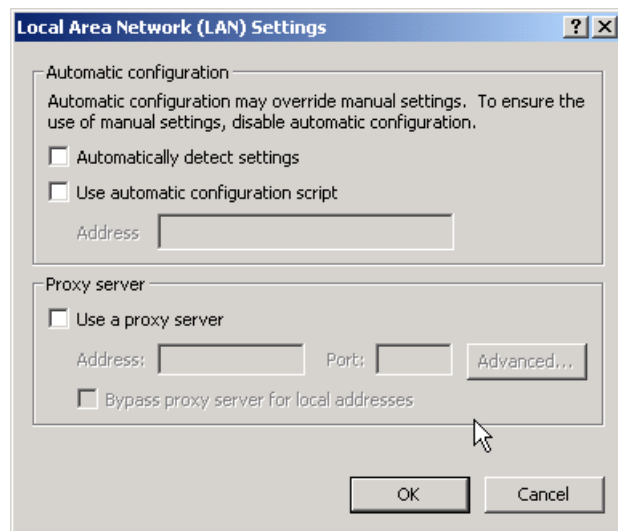
Regardless of the type of browser that you are using, it must be set to connect directly to the Internet with all proxy server options turned off.

### Internet Explorer

Use the following procedure to configure Internet Explorer 4.0 or higher.

- Step 1** Open Internet Explorer.
- Step 2** Choose **Tools > Internet Options**.
- Step 3** Select the **Connections** tab.
- Step 4** Click **LAN Settings**.
- Step 5** In the Local Area Network (LAN) Settings window, uncheck all check boxes. (See [Figure G-4](#).)

**Figure G-4** Local Area Network (LAN) Settings Window



- Step 6** Click **OK**.

**Step 7** Close Internet Explorer.

---

## Netscape

Use the following procedure to configure Netscape 4.x.

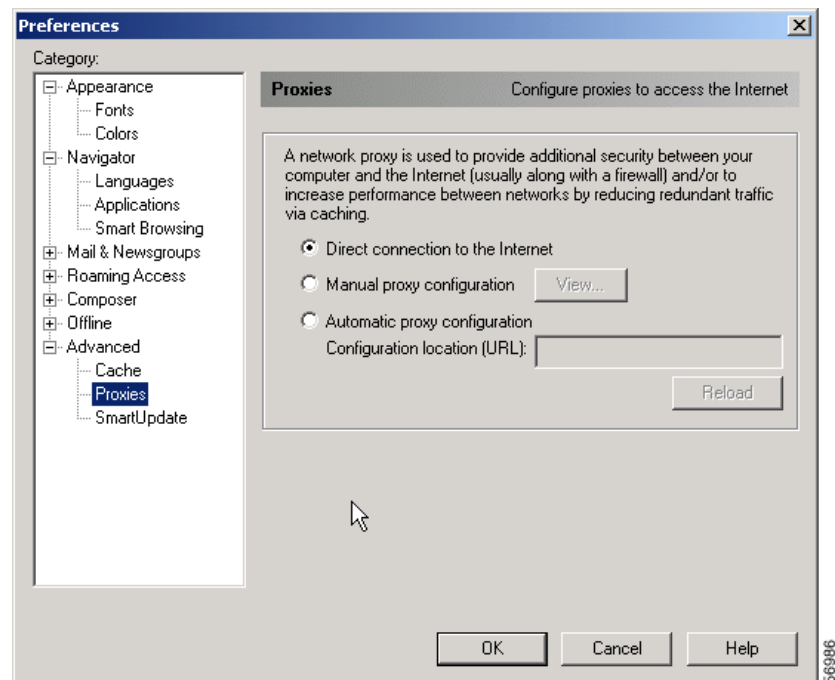
---

**Step 1** Open the Netscape browser.

**Step 2** Choose **Edit > Preferences**.

**Step 3** Click **Advanced > Proxies**. The Proxies Preferences window appears. (See [Figure G-5](#).)

**Figure G-5 Network Proxy Setting**



**Step 4** Select the **Direct connection to the Internet** radio button.

**Step 5** Click **OK**.

---

