



Frame Relay Point-Multipoint Wireless

Feature History

Release	Modification
Prior to 12.2(2)T	This feature was introduced on various platforms.
12.2(2)T	Support for this feature was added to multipoint fixed wireless.

This feature module describes Frame Relay support for multipoint fixed wireless. It includes information on the benefits of the new feature, supported platforms, related documents, and other information.

This document includes the following sections:

- [Feature Overview, page 1](#)
- [Supported Platforms, page 3](#)
- [Prerequisites, page 4](#)
- [Configuration Tasks, page 4](#)
- [Configuration Examples, page 5](#)
- [Command Reference, page 7](#)

Feature Overview

This feature provides an end-to-end Frame Relay network for customers using wireless interfaces in their Frame Relay network. Several new commands are used to establish a virtual Frame Relay interface, then link it to a specific multipoint destination MAC address. The configuration information is associated with a new interface type, virtual Frame Relay and new interface commands, **interface virtual-framerelay** and **frame-relay over radio**.

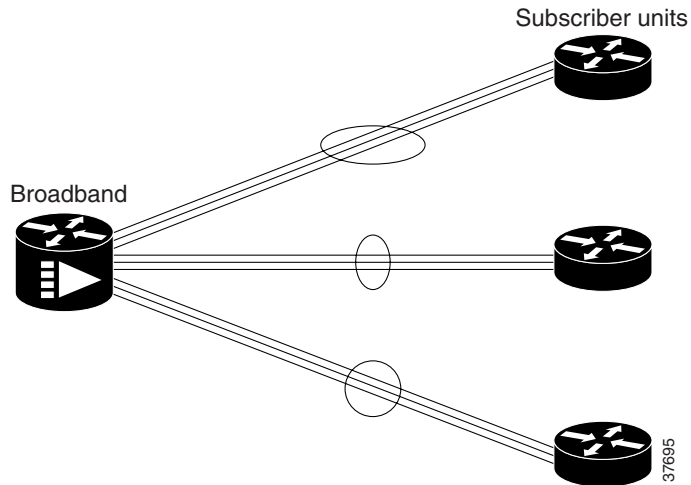
Using the new interface enables Cisco uBR7200 series, Cisco 3600 series, and Cisco 2600 series routers to provide a seamless transition from a serial interface to a multipoint Frame Relay interface. By implementing RFC 1315, Frame Relay DTE MIB, a virtual Frame Relay interface can be linked to a specific multipoint radio interface and destination MAC address. The headend router acts as a Frame Relay switch, receiving radio frequency signals from subscriber units. Once received, the multipoint link is switched to a serial link and then to an upstream router.



Americas Headquarters:
Cisco Systems, Inc., 170 West Tasman Drive, San Jose, CA 95134-1706 USA

© 2007 Cisco Systems, Inc. All rights reserved.

Figure 1 **Point to Multipoint**



Benefits

This feature provides a seamless extension of Frame Relay services over fixed wireless. The look and feel of the interface is consistent with existing Frame Relay services.

The existing Frame Relay infrastructure is leveraged by creating a virtual interface. No hardware upgrade is required.

Restrictions

The wireless network module must be installed and configured correctly and use the Cisco IOS Release 12.2(2)T image. The virtual Frame Relay interface is used only in conjunction with the multipoint radio interface. It cannot be used in conjunction with the cable interface.

Frame Relay over fixed wireless offers a lower payload than over a serial interface. The payload is 1488 bytes compared to 1500 bytes when Frame Relay is on a serial link.

Related Features and Technologies

The multipoint fixed wireless interface must be used to take advantage of the new functionality.

Related Documents

For detailed information about Cisco multipoint wireless support on the Cisco uBR7200 series universal broadband routers, and the Cisco 2600 series and Cisco 3600 series routers, see the following documents:

Routers

- *Router Products Command Reference*

Headend Documents

- *Cisco uBR7200 Series Multipoint Wireless Modem Card and Subsystem Installation*
- *Cisco Multipoint Headend Wireless Transverter Duplexer Replacement Instructions*
- *Cisco Multipoint Headend Power Feed Panel Replacement Instructions*
- *Cisco Multipoint Headend Wireless Transverter Replacement Instructions*
- *Multipoint Wireless Support for Cisco uBR7200 Series Universal Broadband Router*

Subscriber Unit Documents

- *Multipoint Wireless Support for the Cisco 2600 and Cisco 3600 Series Routers*
- *Cisco 2600 Series Hardware Installation Guide*
- *Software Configuration Guide (for Cisco 3600 series and Cisco 2600 series routers)*
- *Cisco Network Modules Hardware Installation Guide (for Cisco 3600 series and Cisco 2600 series routers)*

Supported Platforms

The Frame Relay Point-Multipoint Wireless feature is supported on following platforms:

- Cisco 2610
- Cisco 2611
- Cisco 2620
- Cisco 2621
- Cisco 2650
- Cisco 2651
- Cisco 3620
- Cisco 3640
- Cisco 3661
- Cisco 3662
- Cisco uBR7223
- Cisco uBR7246
- Cisco uBR7246 VXR

Supported Standards, MIBs, and RFCs

Standards

DOCSIS 1.0 and 1.0+. The DOCSIS 1.0+ implementation is DOCSIS 1.0 with quality-of-service (QoS) support.

MIBs

This feature is supported by:

- Cisco uBR7200 series MIBs and DOCSIS MIBs
- Frame Relay DTE MIB (RFC 1315)

To obtain lists of supported MIBs by platform and Cisco IOS release, and to download MIB modules, go to the Cisco MIB web site on cisco.com at the following URL:

<http://www.cisco.com/public/sw-center/netmgmt/cmtk/mibs.shtml>.

RFCs

- RFC 1315, *Management Information Base for Frame Relay DTEs*

Prerequisites

The routers and wireless links must be functioning properly to use this feature.

Configuration Tasks

See the following sections for configuration tasks for the Frame Relay Point-Multipoint Wireless feature. Each task in the list indicates if the task is optional or required.

- Creating the virtual Frame Relay interface.

Creating the Virtual Frame Relay Interface

To create a virtual Frame Relay interface, enter these commands beginning in the global configuration mode:

	Command	Purpose
Step 1	Router(config)# interface virtual-framerelay <i>number</i>	Creates the virtual Frame Relay interface and assigns a number to the interface.
Step 2	Router(config-if)# frame-relay over radio <i>interface destination</i>	Identifies the slot and port numbers of the interface.

Verifying Virtual Frame Relay

To verify that the interface is present, enter the **show interface virtual-framerelay** command.

Troubleshooting Tips

Verify that the multipoint wireless link is up and is working properly, then follow standard Frame Relay troubleshooting procedures.

Configuration Examples

This section provides the following configuration examples:

- Headend Example
- Subscriber Unit Example

Headend Example

The example shows the virtual Frame Relay interface being created. The number assigned at the end of the **interface virtual-framerelay** command is the number assigned to the virtual interface. The **frame-relay over radio** command is used to link the interface to a specific MAC address after the interface has been created.

```
!
interface virtual-framerelay1
 ip address 10.6.24.20 255.255.0.0
 frame-relay map ip 11.6.24.21 16
 frame-relay intf-type dce
 frame-relay route 100 interface Hssi1/0 100
 frame-relay route 200 interface Hssi1/0 300
 frame-relay over Radio3/0 0002.b905.fc30
!
interface virtual-framerelay2
 ip address 10.30.36.12 255.255.255.0
 frame-relay map ip 11.30.36.12 16
 frame-relay intf-type dce
 frame-relay route 100 interface Hssi1/0 200
 frame-relay route 200 interface Hssi1/0 400
 frame-relay over Radio3/0 0002.fd50.bf90
interface Hssi1/0
 no ip address
 encapsulation frame-relay
 no ip mroute-cache
 hssi internal-clock
 frame-relay lmi-type cisco
 frame-relay intf-type dce
 frame-relay route 100 interface Virtual-FrameRelay1 100
 frame-relay route 200 interface Virtual-FrameRelay2 100
 frame-relay route 300 interface Virtual-FrameRelay1 200
 frame-relay route 400 interface Virtual-FrameRelay2 200
!
interface radio3/0 point-to-multipoint
 ip address 10.30.38.0 255.255.255.0
 no ip mroute-cache
 no keepalive
 radio cable-loss 1 4 1
 radio transmit-power 31
 radio upstream frequency 2156000 width 6.0
 radio upstream 0 subchannel 3 modulation-profile 8
 radio upstream 0 target-receive-power -72
```

```

no radio upstream 0 shutdown
radio upstream 1 target-receive-power -72
radio upstream 1 shutdown
radio upstream 2 target-receive-power -72
radio upstream 2 shutdown
radio upstream 3 target-receive-power -72
radio upstream 3 shutdown
radio downstream frequency 2530000 width 6.0
radio downstream subchannel 2 modulation-profile 1
radio su-onoff-trap interval 600

```

interface virtual-frameRelay1

```

Virtual-FrameRelay1 is up, line protocol is up
Hardware is Virtual Frame Relay interface
MTU 1488 bytes, BW 100000 Kbit, DLY 100000 usec,
    reliability 255/255, txload 1/255, rxload 1/255
Encapsulation FRAME-RELAY, loopback not set
Keepalive set (10 sec)
LMI enq sent 0, LMI stat recvd 0, LMI upd recvd 0
LMI enq recvd 1175, LMI stat sent 1175, LMI upd sent 0, DCE LMI up
LMI DLCI 1023 LMI type is CISCO frame relay DCE
Broadcast queue 0/64, broadcasts sent/dropped 0/0, interface broadcasts 0
Last input 00:00:07, output never, output hang never
Last clearing of "show interface" counters 4d03h
Queueing strategy:fifo
Output queue 0/40, 0 drops; input queue 0/75, 0 drops
5 minute input rate 9000 bits/sec, 2 packets/sec
5 minute output rate 0 bits/sec, 0 packets/sec
2094 packets input, 229655 bytes, 0 no buffer
    Received 0 broadcasts, 0 runts, 0 giants, 0 throttles
    0 input errors, 0 CRC, 0 frame, 0 overrun, 0 ignored, 0 abort
1175 packets output, 66954 bytes, 0 underruns
    0 output errors, 0 collisions, 0 interface resets
    0 output buffer failures, 0 output buffers swapped out
    0 carrier transitions

```

Subscriber Unit Example

The example shows the **interface virtual-framerelay** command being used on the subscriber unit to create the virtual Frame Relay interface. The **frame-relay over radio** command is used to link the interface to a specific MAC address, after the interface has been created.

```

interface virtual-framerelay1
ip address 11.6.24.21 255.255.0.0
frame-relay over Radio1/0 0030.80ac.a054
!
interface virtual-framerelay1.1 point-to-point
ip address 192.168.0.0 255.255.255.0
no cdp enable
frame-relay interface-dlci 100
!
interface virtual-framerelay1.2 multipoint
ip address 192.168.1.1 255.255.255.0
frame-relay map ip 192.168.1.0 200
!
interface radio1/0 point-to-multipoint
ip address docsis
no ip route-cache
no ip dvmrp auto-summary
no ip mroute-cache
docsis boot admin 2

```

```
docsis boot oper 5
docsis upstream channel 1 only
docsis mac-timer t2 180000
no docsis compliant bridge
radio cable-loss 1 2 1
no cdp enable
```

```
show interface virtual-frameRelay1
Virtual-FrameRelay1 is up, line protocol is up
  Hardware is Virtual Frame Relay interface
  MTU 1488 bytes, BW 100000 Kbit, DLY 100000 usec,
    reliability 255/255, txload 1/255, rxload 1/255
  Encapsulation FRAME-RELAY, loopback not set
  Keepalive set (10 sec)
  LMI enq sent 1579, LMI stat recvd 1224, LMI upd recvd 0, DTE LMI up
  LMI enq recvd 0, LMI stat sent 0, LMI upd sent 0
  LMI DLCI 1023 LMI type is CISCO frame relay DTE
  Broadcast queue 0/64, broadcasts sent/dropped 0/0, interface broadcasts 0
  Last input 00:00:08, output never, output hang never
  Last clearing of "show interface" counters 4d03h
  Queueing strategy:fifo
  Output queue 0/40, 0 drops; input queue 0/75, 0 drops
  3 minutes, 30 seconds input rate 0 bits/sec, 0 packets/sec
  3 minutes, 30 seconds output rate 0 bits/sec, 0 packets/sec
    1984 packets input, 395391 bytes, 0 no buffer
    Received 0 broadcasts, 0 runts, 0 giants, 0 throttles
    0 input errors, 0 CRC, 0 frame, 0 overrun, 0 ignored, 0 abort
    2474 packets output, 875444 bytes, 0 underruns
    0 output errors, 0 collisions, 0 interface resets
    0 output buffer failures, 0 output buffers swapped out
    0 carrier transitions
```

Command Reference

The following commands are introduced or modified in the feature or features documented in this module. For information about these commands, see the *Cisco IOS Wide-Area Networking Command Reference* at http://www.cisco.com/en/US/docs/ios/wan/command/reference/wan_book.html. For information about all Cisco IOS commands, go to the Command Lookup Tool at <http://tools.cisco.com/Support/CLILookup> or to the *Cisco IOS Master Commands List*.

- **debug frame-relay virtual**
- **frame-relay over radio**
- **interface virtual-framerelay**

CCVP, the Cisco logo, and Welcome to the Human Network are trademarks of Cisco Systems, Inc.; Changing the Way We Work, Live, Play, and Learn is a service mark of Cisco Systems, Inc.; and Access Registrar, Aironet, Catalyst, CCDA, CCDP, CCIE, CCIP, CCNA, CCNP, CCSP, Cisco, the Cisco Certified Internetwork Expert logo, Cisco IOS, Cisco Press, Cisco Systems, Cisco Systems Capital, the Cisco Systems logo, Cisco Unity, Enterprise/Solver, EtherChannel, EtherFast, EtherSwitch, Fast Step, Follow Me Browsing, FormShare, GigaDrive, HomeLink, Internet Quotient, IOS, iPhone, IP/TV, iQ Expertise, the iQ logo, iQ Net Readiness Scorecard, iQuick Study, LightStream, Linksys, MeetingPlace, MGX, Networkers, Networking Academy, Network Registrar, PIX, ProConnect, ScriptShare, SMARTnet, StackWise, The Fastest Way to Increase Your Internet Quotient, and TransPath are registered trademarks of Cisco Systems, Inc. and/or its affiliates in the United States and certain other countries.

All other trademarks mentioned in this document or Website are the property of their respective owners. The use of the word partner does not imply a partnership relationship between Cisco and any other company. (0711R)

Any Internet Protocol (IP) addresses used in this document are not intended to be actual addresses. Any examples, command display output, and figures included in the document are shown for illustrative purposes only. Any use of actual IP addresses in illustrative content is unintentional and coincidental.

© 2007 Cisco Systems, Inc. All rights reserved.