



RSVP Support for RTP Header Compression, Phase 1

The Resource Reservation Protocol (RSVP) Support for Real-Time Transport Protocol (RTP) Header Compression, Phase 1 feature provides a method for decreasing a flow's reserved bandwidth requirements so that a physical link can accommodate more voice calls.

Feature Specifications for RSVP Support for RTP Header Compression, Phase 1

Feature History

Release	Modification
12.2(15)T	This feature was introduced.

Supported Platforms

For platforms supported in Cisco IOS Release 12.2(15)T, consult Cisco Feature Navigator.

Finding Support Information for Platforms and Cisco IOS and Catalyst OS Software Images

Use Cisco Feature Navigator to find information about platform support and Cisco IOS and Catalyst OS software image support. To access Cisco Feature Navigator, go to <http://www.cisco.com/go/cfn>. An account on Cisco.com is not required.

Contents

- [Prerequisites for RSVP Support for RTP Header Compression, Phase 1, page 2](#)
- [Restrictions for RSVP Support for RTP Header Compression, Phase 1, page 2](#)
- [Information About RSVP Support for RTP Header Compression, Phase 1, page 2](#)
- [How to Configure RSVP Support for RTP Header Compression, Phase 1, page 4](#)
- [Configuration Examples for RSVP Support for RTP Header Compression, Phase 1, page 8](#)
- [Additional References, page 9](#)
- [Command Reference, page 11](#)
- [Glossary, page 12](#)



Americas Headquarters:
Cisco Systems, Inc., 170 West Tasman Drive, San Jose, CA 95134-1706 USA

© 2007 Cisco Systems, Inc. All rights reserved.

Prerequisites for RSVP Support for RTP Header Compression, Phase 1

- Ensure that Real-Time Transport Protocol (RTP) or User Data Protocol (UDP) header compression is configured in the network.
- Ensure that RSVP is configured on two or more routers within the network before you can use this feature.

Restrictions for RSVP Support for RTP Header Compression, Phase 1

- Routers do not generate compression hints, as described in RFC 3006, in this release.
- Signalled compression hints are not supported.
- Admission control with compression is limited to reservations with one sender per session.

Information About RSVP Support for RTP Header Compression, Phase 1

To configure RSVP Support for RTP Header Compression, Phase 1, you need to understand the following concepts:

- [Feature Design of RSVP Support for RTP Header Compression, Phase 1, page 2](#)
- [Benefits of RSVP Support for RTP Header Compression, Phase 1, page 3](#)

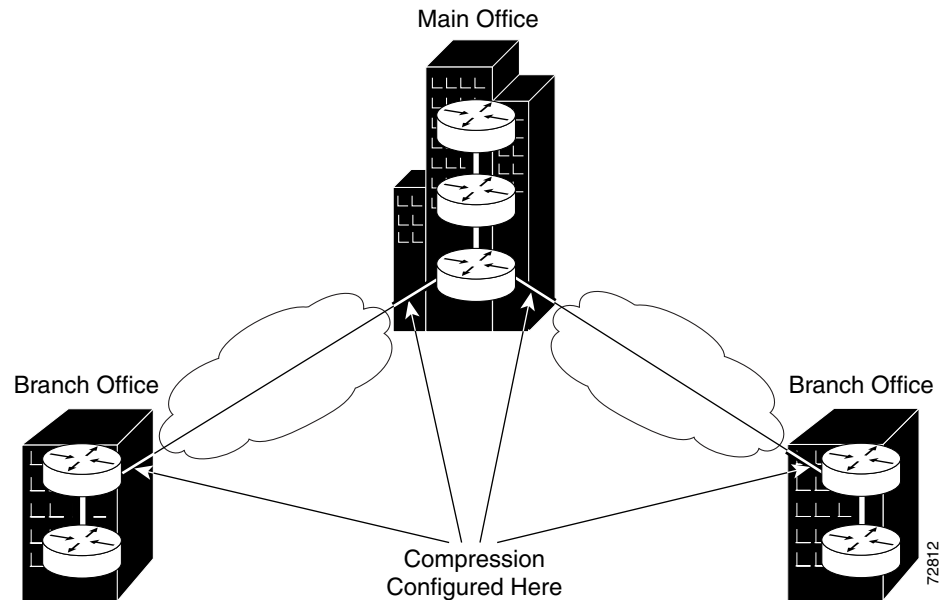
Feature Design of RSVP Support for RTP Header Compression, Phase 1

Network administrators use RSVP with Voice over IP (VoIP) to provide quality of service (QoS) for voice traffic in a network. Because VoIP is a real-time application, network administrators often configure compression within the network to decrease bandwidth requirements. Typically, compression is configured on slow serial lines ([Figure 1](#)), where the savings from reduced bandwidth requirements outweigh the additional costs associated with the compression and decompression processes.

**Note**

RTP header compression is supported by Cisco routers.

Figure 1 **Configuring Compression**



Originating applications know if their traffic is considered compressible, but not whether the network can actually compress the data. Additionally, compression may be enabled on some links along the call's path, but not on others. Consequently, the originating applications must advertise their traffic's uncompressed bandwidth requirements, and receiving applications must request reservation of the full amount of bandwidth. This causes routers whose RSVP implementations do not take compression into consideration to admit the same number of flows on a link running compression as on one that is not.

Predicting Compression within Admission Control

Network administrators, especially those whose networks have very low speed links, may want RSVP to use their links as fully as possible. Such links typically have minimum acceptable outgoing committed information rate (minCIR) values between 19 and 30 kbps. Without accounting for compression, RSVP can admit (at most) one G.723 voice call onto the link, despite the link's capacity for two compressed calls. Under these circumstances, network administrators may be willing to sacrifice a QoS guarantee for the last call, if the flow is less compressible than predicted, in exchange for the ability to admit it.

In order to account for compression during admission control, routers use signalled Tspec information, as well as their awareness of the compression schemes running on the flow's outbound interfaces, to make local decisions as to how much bandwidth should actually be reserved for a flow. By reserving fewer resources than signalled by the receiver, RSVP can allow links to be more fully used.

Benefits of RSVP Support for RTP Header Compression, Phase 1

Additional Calls Accommodated on the Same Link

The RSVP Support for RTP Header Compression, Phase 1 feature performs admission control based on compressed bandwidth so that additional voice calls can be accommodated on the same physical link.

How to Configure RSVP Support for RTP Header Compression, Phase 1

This section contains the following procedure:

- [Configuring RSVP Admission-Control Compression, page 4](#) (optional)

Configuring RSVP Admission-Control Compression



Note

RSVP predicted compression is enabled by default.

Perform this task to configure RSVP admission-control compression.

SUMMARY STEPS

1. **enable**
2. **configure terminal**
3. **interface** [*type number*]
4. **ip rsvp admission-control compression predict** [*method* {**rtp** | **udp**}] [*bytes-saved N*]
5. **end**

DETAILED STEPS

	Command or Action	Purpose
Step 1	enable Example: Router> enable	Enables privileged EXEC mode. • Enter your password if prompted.
Step 2	configure terminal Example: Router# configure terminal	Enters global configuration mode.
Step 3	interface [<i>type number</i>] Example: Router(config-if)# interface Serial3/0	Enters interface configuration mode. • The <i>type number</i> argument identifies the interface to be configured.

	Command or Action	Purpose
Step 4	<pre>ip rsvp admission-control compression predict [method {rtp udp} [bytes-saved N]]</pre> <p>Example: Router(config-if)# ip rsvp admission-control compression predict method udp bytes-saved 16</p>	<p>Configures RSVP admission-control compression prediction.</p> <ul style="list-style-type: none"> The optional method keyword allows you to select Real-Time Transport Protocol (rtp) or User Data Protocol (udp) for your compression scheme. The optional bytes-saved N keyword allows you to configure the predicted number of bytes saved per packet when RSVP predicts that compression will occur using the specified method.
Step 5	<pre>end</pre> <p>Example: Router(config-if)# end</p>	<p>Exits to privileged EXEC mode.</p>

Verifying RSVP Support for RTP Header Compression, Phase 1 Configuration

Perform this task to verify that the RSVP Support for RTP Header Compression, Phase 1 feature is functioning.

SUMMARY STEPS

1. **enable**
2. **show ip rsvp installed [detail]**
3. **show ip rsvp interface [interface-type interface-number] [detail]**

DETAILED STEPS

	Command or Action	Purpose
Step 1	<pre>enable</pre> <p>Example: Router> enable</p>	<p>Enables privileged EXEC mode.</p> <ul style="list-style-type: none"> Enter your password if prompted.

	Command or Action	Purpose
Step 2	show ip rsvp installed [detail] Example: Router# show ip rsvp installed detail	Displays information about interfaces and their admitted reservations and the resources needed for a traffic control state block (TCSB) after taking compression into account. <ul style="list-style-type: none"> The optional detail keyword displays the reservation's traffic parameters, downstream hop, compression, and resources used by RSVP to ensure QoS for this reservation.
Step 3	show ip rsvp interface [interface-type interface-number] [detail] Example: Router# show ip rsvp interface detail	Displays information about interfaces on which RSVP is enabled, including the current allocation budget and maximum available bandwidth and the RSVP bandwidth limit counter, taking compression into account. <ul style="list-style-type: none"> The optional detail keyword displays RSVP parameters associated with an interface including bandwidth, admission control, and compression methods.

Examples

This section provides the following example output:

- [Sample Output for the show ip rsvp installed detail Command, page 6](#)
- [Sample Output for the show ip rsvp interface detail Command, page 7](#)

Sample Output for the show ip rsvp installed detail Command

In this example, the **show ip rsvp installed detail** command displays information, including the predicted compression method, its reserved context ID, and the observed bytes saved per packet average, for the admitted flowspec.

```
Router# show ip rsvp installed detail
```

```
RSVP: Ethernet2/1 has no installed reservations
```

```
RSVP: Serial3/0 has the following installed reservations
```

```
RSVP Reservation. Destination is 10.1.1.2. Source is 10.1.1.1,  
Protocol is UDP, Destination port is 18054, Source port is 19156  
Compression: (method rtp, context ID = 1, 37.98 bytes-saved/pkt avg)
```

```
Admitted flowspec:
```

```
Reserved bandwidth: 65600 bits/sec, Maximum burst: 328 bytes, Peak rate: 80K bits/sec  
Min Policed Unit: 164 bytes, Max Pkt Size: 164 bytes
```

```
Admitted flowspec (as required if compression were not applied):
```

```
Reserved bandwidth: 80K bits/sec, Maximum burst: 400 bytes, Peak rate: 80K bits/sec  
Min Policed Unit: 200 bytes, Max Pkt Size: 200 bytes
```

```
Resource provider for this flow:
```

```
WFQ on FR PVC dlci 101 on Se3/0: PRIORITY queue 24. Weight: 0, BW 66 kbps
```

```
Conversation supports 1 reservations [0x1000405]
```

```
Data given reserved service: 3963 packets (642085 bytes)
```

```
Data given best-effort service: 0 packets (0 bytes)
```

```
Reserved traffic classified for 80 seconds
```

```
Long-term average bitrate (bits/sec): 64901 reserved, 0 best-effort
```

```
Policy: INSTALL. Policy source(s): Default
```

Sample Output for the show ip rsvp interface detail Command

In this example, the **show ip rsvp interface detail** command displays the current interfaces and their configured compression parameters.

```
Router# show ip rsvp interface detail

Et2/1:
  Bandwidth:
    Curr allocated: 0 bits/sec
    Max. allowed (total): 1158K bits/sec
    Max. allowed (per flow): 128K bits/sec
    Max. allowed for LSP tunnels using sub-pools: 0 bits/sec
    Set aside by policy (total): 0 bits/sec
  Admission Control:
    Header Compression methods supported:
      rtp (36 bytes-saved), udp (20 bytes-saved)
  Neighbors:
    Using IP encap: 0. Using UDP encap: 0
  Signalling:
    Refresh reduction: disabled
    Authentication: disabled

Se3/0:
  Bandwidth:
    Curr allocated: 0 bits/sec
    Max. allowed (total): 1158K bits/sec
    Max. allowed (per flow): 128K bits/sec
    Max. allowed for LSP tunnels using sub-pools: 0 bits/sec
    Set aside by policy (total): 0 bits/sec
  Admission Control:
    Header Compression methods supported:
      rtp (36 bytes-saved), udp (20 bytes-saved)
  Neighbors:
    Using IP encap: 1. Using UDP encap: 0
  Signalling:
    Refresh reduction: disabled
    Authentication: disabled
```

Troubleshooting Tips

The observed bytes-saved per packet value should not be less than the configured or default value. Otherwise, the flow may be experiencing degraded QoS. To avoid any QoS degradation for future flows, configure a lower bytes-saved per packet value.

Flows may achieve less compressibility than the default RSVP assumes for many reasons, including packets arriving out of order or having different differentiated services code point (DSCP) or precedence values, for example, due to policing upstream within the network.

If compression is enabled on a flow's interface, but the compression prediction was unsuccessful, the reason appears in the output instead of the reserved compression ID and the observed bytes-saved per packet.

Configuration Examples for RSVP Support for RTP Header Compression, Phase 1

This section provides the following configuration example:

- [RSVP Support for RTP Header Compression, Phase 1 Example, page 8](#)

RSVP Support for RTP Header Compression, Phase 1 Example

The following sample configuration shows the compression prediction enabled for flows using UDP and disabled for flows using RTP:

```
Router# configure terminal
Router(config)# interface Serial3/0
Router(config-if)# ip rsvp admission-control compression predict method udp bytes-saved 16
Router(config-if)# no ip rsvp admission-control compression predict method rtp
```

Use the **show run** command to display all the RSVP configured parameters:

```
Router# show run
```

```
2d18h: %SYS-5-CONFIG_I: Configured from console by console
```

```
Router# show run int se3/0
```

```
Building configuration...
```

```
Current configuration : 339 bytes
!
interface Serial3/0
 ip address 10.2.1.1 255.255.0.0
 max-reserved-bandwidth 80
 fair-queue 64 256 8
 serial restart_delay 0
 clock rate 128000
 ip rtp header-compression
 ip rsvp bandwidth
 no ip rsvp admission-control compression predict method rtp
 ip rsvp admission-control compression predict method udp bytes-saved 16
end
```

Additional References

For additional information related to RSVP Support for RTP Header Compression, Phase 1, refer to the following references:

- [Related Documents, page 9](#)
- [Standards, page 9](#)
- [MIBs, page 9](#)
- [RFCs, page 10](#)
- [Technical Assistance, page 10](#)

Related Documents

Related Topic	Document Title
QoS commands: complete command syntax, command modes, command history, defaults, usage guidelines, and examples	Cisco IOS Quality of Service Solutions Command Reference
Signalling	“ Signalling Overview ” module
RSVP	“ Configuring RSVP ” module
Header compression concepts and topics	“ Header Compression ” module

Standards

Standards	Title
No new or modified standards are supported by this feature, and support for existing standards has not been modified by this feature.	—

MIBs

MIBs ¹	MIBs Link
<ul style="list-style-type: none"> • RFC 2206, <i>RSVP Management Information Base using SMIPv2</i> 	<p>To obtain lists of supported MIBs by platform and Cisco IOS release, and to download MIB modules, go to the Cisco MIB website on Cisco.com at the following URL:</p> <p>http://www.cisco.com/public/sw-center/netmgmt/cmtk/mibs.shtml</p>

1. Not all supported MIBs are listed.

To locate and download MIBs for selected platforms, Cisco IOS releases, and feature sets, use Cisco MIB Locator found at the following URL:

<http://tools.cisco.com/ITDIT/MIBS/servlet/index>

If Cisco MIB Locator does not support the MIB information that you need, you can also obtain a list of supported MIBs and download MIBs from the Cisco MIBs page at the following URL:

<http://www.cisco.com/public/sw-center/netmgmt/cmtk/mibs.shtml>

To access Cisco MIB Locator, you must have an account on Cisco.com. If you have forgotten or lost your account information, send a blank e-mail to cco-locksmith@cisco.com. An automatic check will verify that your e-mail address is registered with Cisco.com. If the check is successful, account details with a new random password will be e-mailed to you. Qualified users can establish an account on Cisco.com by following the directions found at this URL:

<http://www.cisco.com/register>

RFCs

RFCs ¹	Title
RFC 2205	Resource Reservation Protocol (RSVP)
RFC 2508	Compressing IP/UDP/RTP Headers for Low-Speed Serial Links
RFC 3006	Integrated Services in the Presence of Compressible Flows

1. Not all supported RFCs are listed.

Technical Assistance

Description	Link
<p>The Cisco Support website provides extensive online resources, including documentation and tools for troubleshooting and resolving technical issues with Cisco products and technologies.</p> <p>To receive security and technical information about your products, you can subscribe to various services, such as the Product Alert Tool (accessed from Field Notices), the Cisco Technical Services Newsletter, and Really Simple Syndication (RSS) Feeds.</p> <p>Access to most tools on the Cisco Support website requires a Cisco.com user ID and password.</p>	<p>http://www.cisco.com/techsupport</p>

Command Reference

The following commands are introduced or modified in the feature or features documented in this module. For information about these commands, see the *Cisco IOS Quality of Service Solutions Command Reference* at http://www.cisco.com/en/US/docs/ios/qos/command/reference/qos_book.html. For information about all Cisco IOS commands, use the Command Lookup Tool at <http://tools.cisco.com/Support/CLILookup> or a Cisco IOS master commands list.

New Commands

- **ip rsvp admission-control compression predict**

Modified Commands

- **debug ip rsvp traffic-control**
- **show ip rsvp installed**
- **show ip rsvp interface**

Glossary

admission control—The process in which a Resource Reservation Protocol (RSVP) reservation is accepted or rejected based on end-to-end available network resources.

bandwidth—The difference between the highest and lowest frequencies available for network signals. The term also is used to describe the rated throughput capacity of a given network medium or protocol.

compression—The running of a data set through an algorithm that reduces the space required to store or the bandwidth required to transmit the data set.

DSCP—differentiated services code point. The six most significant bits of the 1-byte IP type of service (ToS) field. The per-hop behavior represented by a particular DSCP value is configurable. DSCP values range between 0 and 63.

flow—A stream of data traveling between two endpoints across a network (for example, from one LAN station to another). Multiple flows can be transmitted on a single circuit.

flowspec—In IPv6, the traffic parameters of a stream of IP packets between two applications.

G.723—A compression technique that can be used for compressing speech or audio signal components at a very low bit rate as part of the H.324 family of standards. This codec has two bit rates associated with it: 5.3 and 6.3 kbps. The higher bit rate is based on ML-MLQ technology and provides a somewhat higher quality of sound. The lower bit rate is based on code excited linear prediction (CELP) compression and provides system designers with additional flexibility. Described in the ITU-T standard in its G-series recommendations.

minCIR—The minimum acceptable incoming or outgoing committed information rate (CIR) for a Frame Relay virtual circuit.

packet—A logical grouping of information that includes a header containing control information and (usually) user data. Packets most often refer to network layer units of data.

QoS—quality of service. A measure of performance for a transmission system that reflects its transmission quality and service availability.

router—A network layer device that uses one or more metrics to determine the optimal path along which network traffic should be forwarded. Routers forward packets from one network to another based on network layer information.

RSVP—Resource Reservation Protocol. A protocol that supports the reservation of resources across an IP network. Applications running on IP end systems can use RSVP to indicate to other nodes the nature (bandwidth, jitter, maximum burst, and so on) of the packet streams they want to receive.

RTP—Real-Time Transport Protocol. A protocol that is designed to provide end-to-end network transport functions for applications transmitting real-time data, such as audio, video, or simulation data, over multicast or unicast network services. RTP provides such services as payload type identification, sequence numbering, timestamping, and delivery monitoring to real-time applications.

TCSB—traffic control state block. A Resource Reservation Protocol (RSVP) state that associates reservations with their reserved resources required for admission control.

Tspec—Traffic specification. The traffic characteristics of a data stream from a sender or receiver (included in a Path message).

UDP—User Datagram Protocol. A connectionless transport layer protocol in the TCP/IP protocol stack. UDP is a simple protocol that exchanges datagrams without acknowledgments or guaranteed delivery, requiring that error processing and retransmission be handled by other protocols. UDP is defined in RFC 768.

VoIP—Voice over IP. The ability to carry normal telephony-style voice over an IP-based Internet maintaining telephone-like functionality, reliability, and voice quality.

CCDE, CCENT, CCSI, Cisco Eos, Cisco HealthPresence, Cisco IronPort, the Cisco logo, Cisco Nurse Connect, Cisco Pulse, Cisco SensorBase, Cisco StackPower, Cisco StadiumVision, Cisco TelePresence, Cisco Unified Computing System, Cisco WebEx, DCE, Flip Channels, Flip for Good, Flip Mino, Flipshare (Design), Flip Ultra, Flip Video, Flip Video (Design), Instant Broadband, and Welcome to the Human Network are trademarks; Changing the Way We Work, Live, Play, and Learn, Cisco Capital, Cisco Capital (Design), Cisco:Financed (Stylized), Cisco Store, Flip Gift Card, and One Million Acts of Green are service marks; and Access Registrar, Aironet, AllTouch, AsyncOS, Bringing the Meeting To You, Catalyst, CCDA, CCDP, CCIE, CCIP, CCNA, CCNP, CCSP, CCVP, Cisco, the Cisco Certified Internetwork Expert logo, Cisco IOS, Cisco Lumin, Cisco Nexus, Cisco Press, Cisco Systems, Cisco Systems Capital, the Cisco Systems logo, Cisco Unity, Collaboration Without Limitation, Continuum, EtherFast, EtherSwitch, Event Center, Explorer, Follow Me Browsing, GainMaker, iLYNX, IOS, iPhone, IronPort, the IronPort logo, Laser Link, LightStream, Linksys, MeetingPlace, MeetingPlace Chime Sound, MGX, Networkers, Networking Academy, PCNow, PIX, PowerKEY, PowerPanels, PowerTV, PowerTV (Design), PowerVu, Prisma, ProConnect, ROSA, SenderBase, SMARTnet, Spectrum Expert, StackWise, WebEx, and the WebEx logo are registered trademarks of Cisco Systems, Inc. and/or its affiliates in the United States and certain other countries.

All other trademarks mentioned in this document or website are the property of their respective owners. The use of the word partner does not imply a partnership relationship between Cisco and any other company. (0910R)

Any Internet Protocol (IP) addresses used in this document are not intended to be actual addresses. Any examples, command display output, and figures included in the document are shown for illustrative purposes only. Any use of actual IP addresses in illustrative content is unintentional and coincidental.

© 2007 Cisco Systems, Inc. All rights reserved.

