

Setting Preferences

The **CAM Preferences** button allows you to set up preferences for CAM. Topics covered in this chapter include:

- Setting UI Preference on page 3-1
- Setting DataBase Preference on page 3-4
- Setting Report Preference on page 3-5
- Setting E-Mail List Preference on page 3-8

Note Changes made to the User Interface (UI) Preference are limited to the user and will not affect other accounts. Any user can change the UI preferences. The following preferences are per-user based:

1. Multi-window (yes or no)
2. MCC view attribute

Preferences other than UI are system wide. Only the CAM administrator can make these changes.

Setting UI Preference

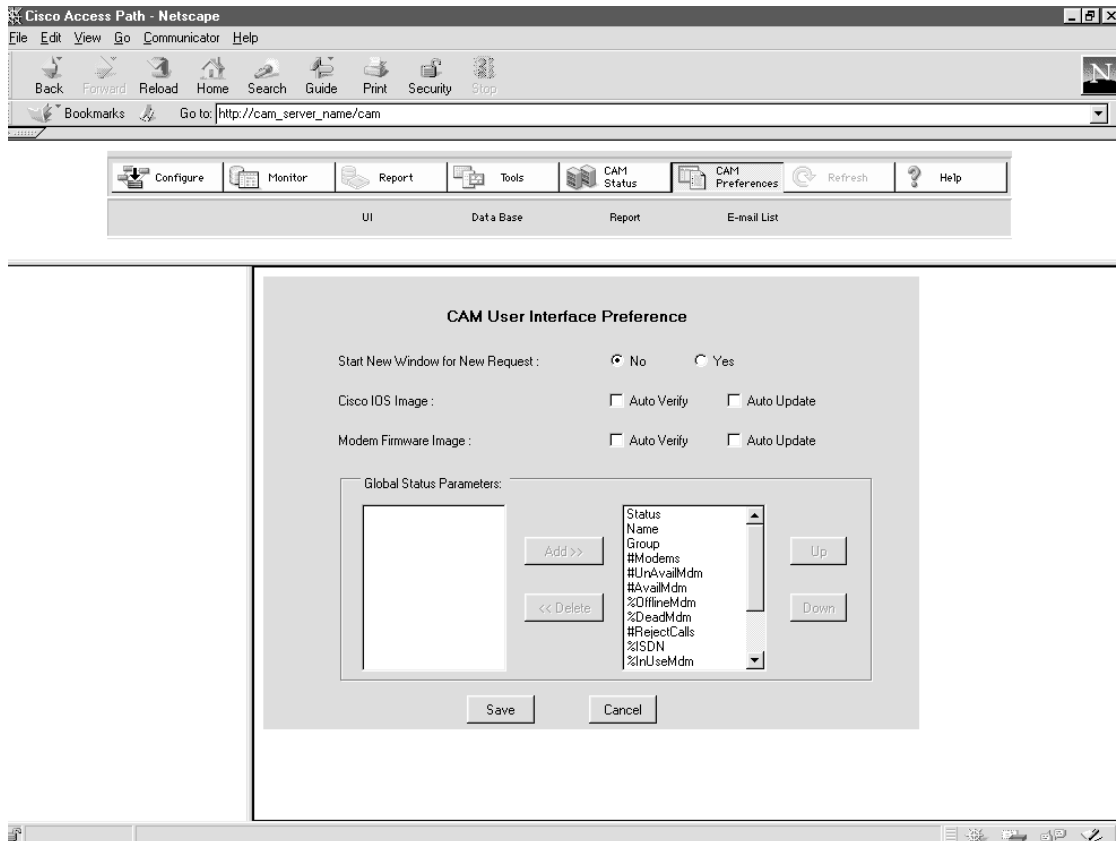
Use the CAM User Interface Preference dialog box to select preferences for the UI:

Step	Description
1 Click CAM Preferences .	The Task Selection bar displays all the preferences you can set.
2 Click UI .	The CAM User Interface Preference dialog box appears. (See Figure 3-1.)

Setting UI Preference

Step	Description
3 Select yes or no .	Select whether or not you want to start a new window for each new request.
4 For the Cisco IOS Image and Modem Firmware Image fields, select Auto Verify and/or Auto Update .	<p>Select Auto Verify and/or Auto Update depending on what you want the Cisco IOS Image Manager and Modem Image Manager to do:</p> <ul style="list-style-type: none">• Both Auto Verify/Auto Update on—Autoverify the image and autoupdate it if it is different from the default.• Auto Verify on/Auto Update off—Autoverify the image and prompt for an update.• Auto Verify off—Do not verify and do not update. <p>The default setting for both image managers is for both Auto Verify and Auto Update to be off. If only Auto Update is selected, Auto Verify is automatically turned on.</p>
5 Click Add>> or <<Delete . to select which Global Status parameters you want to appear on the Global Status display.	The parameters to the left box do not display; the parameters to the right box do display. See the “Global Status Fields” section on page 2-6 for descriptions of the Global Status fields.
6 Click Save .	Save the preferences you have set for the UI. Otherwise, click Cancel .

Figure 3-1 CAM User Interface Preference Dialog Box



14074

Setting DataBase Preference

The CAM DataBase Preference dialog box allows you to configure database log file sizes and also set the AAA username and password. (See Figure 3-2.)

CAM keeps track of all the changes you make to the Cisco IOS image, the modem image, and the configuration in the respective log files. You can set the maximum size for these log files.

To set the preferences for the log file sizes and AAA information:

Step	Description
1	Click CAM Preferences . The Task Selection bar displays all the preferences you can set.
2	Click Data Base . The CAM DataBase Preference dialog box appears. (See Figure 3-2.)
3	Enter the number of records (entries) that you want as the maximum for the Cisco IOS image, modem image, and configuration log files to be kept in the database. If a log file reaches its maximum size, the oldest record in that log is purged. You can optionally increase the log file size as needed.
4	Enter the AAA username you want to use. The user name for authentication, authorization, and accounting.
5	Enter the AAA password you want to use. The password for authentication, authorization, and accounting.
6	Click Save . Save the preferences you have set for the database. Otherwise, click Cancel .

Figure 3-2 CAM DataBase Preference Dialog Box

CAM DataBase Preference

Cisco IOS Image LogFile Size : (Records)

Modem Image LogFile Size : (Records)

Configuration LogFile Size : (Records)

AAA User Name :

AAA Password :

14091

Setting Report Preference

The Report Preference allows you to specify the scheduled reports you want generated and the interval (daily, weekly, and monthly) at which you want them to be generated.

By default, all reports (Traffic Profiles, Traffic Loads, Modem Connections, and Channel Utilization) are scheduled to run after CAM installation. Daily reports are saved for 31 days, weekly reports for 92 days, and monthly reports for 366 days. During this time, the reports can be viewed. When the period expires, the reports are deleted.

Using the Report Preference you can modify these defaults. We recommend that you do so. Generating scheduled reports affect system performance.

Setting Report Preference

To set the parameters for the Report Preference:

Step	Description
1	<p>Click CAM Preferences.</p> <p>The Task Selection bar displays all the preferences you can set.</p>
2	<p>Click Report.</p> <p>The CAM Report Preference dialog box appears. (See Figure 3-3.)</p>
3	<p>Specify a report interval by entering a value in the Days field.</p> <p>The number of days you want CAM to save data for scheduled reports. CAM saves scheduled reports on disk for the specified report interval. You can view these reports any time during that period. After these periods, the reports are deleted. By default, scheduled reports are saved as follows:</p> <ul style="list-style-type: none">• Daily Reports—31 days• Weekly Reports—92 days• Monthly Reports—366 days
4	<p>Click the check box next to the Scheduled Reports you want generated.</p> <p>You can select from the following reports:</p> <ul style="list-style-type: none">• Traffic Profiles (call count, BPS, and PPS) to be generated on a daily, weekly, and/or monthly basis.• Traffic Loads (call count, BPS, and PPS) to be generated on a daily, weekly, and/or monthly basis.• Modem Connections (BPS only) to be generated on a daily, weekly, and/or monthly basis.• Channel Utilization (utilization only) to be generated on a daily basis only. <p>Note Selecting all scheduled reports at the Report Preference dialog box slows the system down during report generation. You should only select reports that are needed.</p>
5	<p>Click Save to save the newly defined report preference.</p> <p>The newly defined report preference is saved to disk. CAM uses this preference every time scheduled reports are generated.</p>

Figure 3-3 Report Preference Dialog Box

CAM Report Preference

Report Interval						
Daily Report	Start Time :	<input type="text" value="00:00"/>	End Time:	<input type="text" value="00:00"/>	Keep	<input type="text" value="31"/> (Days)
Weekly Report	Start Time :	<input type="text" value="Sat. 00:00"/>	End Time:	<input type="text" value="Sat. 00:00"/>	Keep	<input type="text" value="92"/> (Days)
Monthly Report	Start Time :	<input type="text" value="1st. 00:00"/>	End Time:	<input type="text" value="1st. 00:00"/>	Keep	<input type="text" value="366"/> (Days)

Generate Scheduled Reports for Traffic Profiles

Call Count :	<input checked="" type="checkbox"/> Daily	<input checked="" type="checkbox"/> Weekly	<input checked="" type="checkbox"/> Monthly
BPS:	<input checked="" type="checkbox"/> Daily	<input checked="" type="checkbox"/> Weekly	<input checked="" type="checkbox"/> Monthly
PPS:	<input checked="" type="checkbox"/> Daily	<input checked="" type="checkbox"/> Weekly	<input checked="" type="checkbox"/> Monthly

Generate Scheduled Reports for Traffic Load

Call Count :	<input checked="" type="checkbox"/> Daily	<input checked="" type="checkbox"/> Weekly	<input checked="" type="checkbox"/> Monthly
BPS:	<input checked="" type="checkbox"/> Daily	<input checked="" type="checkbox"/> Weekly	<input checked="" type="checkbox"/> Monthly
PPS:	<input checked="" type="checkbox"/> Daily	<input checked="" type="checkbox"/> Weekly	<input checked="" type="checkbox"/> Monthly

Generate Scheduled Reports for Modem Connection

BPS:	<input checked="" type="checkbox"/> Daily	<input checked="" type="checkbox"/> Weekly	<input checked="" type="checkbox"/> Monthly
------	---	--	---

Generate Scheduled Reports for Channel Utilization

Utilization:	<input checked="" type="checkbox"/> Daily
--------------	---

15132

Setting E-Mail List Preference

The E-mail List Preference allows you to create and modify an e-mail list for notifying users of the availability of scheduled reports.

Scheduled reports are generated in both HTML and Comma-Separated Values (CSV) formats and placed in specified locations. Users whose e-mail addresses are added to the e-mail list receive notification of the reports being available.

Note You should limit your e-mail list to users who need to monitor system performance.

CAM sends notifications similar to the following to the users on the e-mail list:

- **Daily Reports**

Subject: Daily Reports -- Oct-10-1998 to Oct-11-1998

Daily scheduled reports for CAM 3.0 were generated successfully. The resulting HTML and CSV (comma-separated value) files are available at:

<http://<server-name>/cam/results>

Reporting Range: Oct-10-1998 00:00:00 to Oct-11-1998 00:00:00

- **Weekly Reports**

Subject: Weekly Reports -- Oct-10-1998 to Oct-17-1998

Weekly scheduled reports for CAM 3.0 were generated successfully. The resulting HTML and CSV (comma-separated value) files are available at:

<http://<server-name>/cam/results>

Reporting Range: Oct-10-1998 00:00:00 to Oct-17-1998 00:00:00

- **Monthly Reports**

Subject: Monthly Reports -- Oct-01-1998 to Nov-01-1998

Monthly scheduled reports for CAM 3.0 were generated successfully. The resulting HTML and CSV (comma-separated value) files are available at:

<http://<server-name>/acam/results>

Reporting Range: Oct-01-1998 00:00:00 to Nov-01-1998 00:00:00

For information about selecting reports to generate, see the “Setting Report Preference” section on page 3-5.

To set the parameters for the E-mail List Preference:

Step	Description
1 Click CAM Preferences .	The Task Selection bar displays all the preferences you can set.
2 Click E-mail List .	The E-mail List Preference dialog box appears. (See Figure 3-4.)
3 Enter an e-mail address.	Specify the e-mail address of the person who is to receive the report.
4 Modify your distribution list.	To add a user to the e-mail distribution list, enter the user’s e-mail address and click Add User . To remove a user from the e-mail distribution list, highlight the user in the list and click Remove .

Figure 3-4 E-Mail List Preference Dialog Box

