



# MPLS VPN Support for EIGRP Between Provider Edge and Customer Edge

The MPLS VPN Support for EIGRP Between Provider Edge (PE) and Customer Edge (CE) feature introduces the capability to redistribute Enhanced Interior Gateway Routing Protocol (EIGRP) routes through a Multiprotocol Label Switching (MPLS) Virtual Private Network (VPN) over a Border Gateway Protocol (BGP) core network. This feature is configured only on PE routers and requires no upgrade or configuration changes to customer equipment. This feature also introduces EIGRP support for MPLS and support for EIGRP extended community attributes.

## History for the MPLS VPN Support for EIGRP Between Provider Edge and Customer Edge feature

Release	Modification
12.0(22)S	This feature was introduced.
12.2(15)T	This feature was integrated into Cisco IOS Release 12.2(15)T.
12.2(18)S	This feature was integrated into Cisco IOS Release 12.2(18)S.
12.0(27)S	EIGRP back door link support was introduced. This support is provided by a new POI in the BGP Cost Community (updated in this release) and EIGRP MPLS VPN PE-CE Site of Origin (SoO) (introduced in this release) features.
12.2(27)SBC	This feature was integrated into Cisco IOS Release 12.2(27)SBC.

## Finding Support Information for Platforms and Cisco IOS Software Images

Use Cisco Feature Navigator to find information about platform support and Cisco IOS software image support. Access Cisco Feature Navigator at <http://www.cisco.com/go/fn>. You must have an account on Cisco.com. If you do not have an account or have forgotten your username or password, click **Cancel** at the login dialog box and follow the instructions that appear.

## Contents

- [Prerequisites for MPLS VPN Support for EIGRP Between PE and CE, page 2](#)
- [Restrictions for MPLS VPN Support for EIGRP Between PE and CE, page 2](#)



**Corporate Headquarters:**  
Cisco Systems, Inc., 170 West Tasman Drive, San Jose, CA 95134-1706 USA

© 2003, 2005 Cisco Systems, Inc. All rights reserved.

- [Information About MPLS VPN Support for EIGRP Between PE and CE, page 2](#)
- [How to Configure an MPLS VPN Using EIGRP, page 5](#)
- [Configuration Examples for the EIGRP MPLS VPN, page 15](#)
- [Additional References, page 20](#)
- [Command Reference, page 21](#)

## Prerequisites for MPLS VPN Support for EIGRP Between PE and CE

In this document, it is assumed that BGP is configured in the network core. You will also need to complete the following tasks before you can configure this feature:

- MPLS and Cisco Express Forwarding (CEF) must be configured in the BGP core network. EIGRP and multiprotocol BGP (mBGP) must be configured on all PE routers that provide VPN services to the CE routers at the customer sites.
- The metric must be configured for routes from external EIGRP autonomous systems and non-EIGRP networks before these routes can be redistributed into an EIGRP CE router. The metric can be configured in the redistribute statement using the **redistribute (IP)** command or configured with the **default-metric** (EIGRP) command.

## Restrictions for MPLS VPN Support for EIGRP Between PE and CE

### **Metric Must Be Configured for Routes from Other Autonomous Systems and Non-EIGRP Networks**

If an external route is received from another EIGRP autonomous system or a non-EIGRP network without a configured metric, the route will not be advertised to the CE router. The metric can be configured in the redistribute statement by use of the **redistribute** command or configured with the **default-metric** command.

### **Native EIGRP VRF to VRF Redistribution Is Not Supported**

Redistribution between native EIGRP VRFs is not supported. This is designed behavior.

## Information About MPLS VPN Support for EIGRP Between PE and CE

To configure this feature, you must understand the following concepts:

- [MPLS VPN Support for EIGRP, page 3](#)
- [EIGRP Extended Community Attributes, page 4](#)
- [Benefits of MPLS VPN Support for EIGRP, page 5](#)

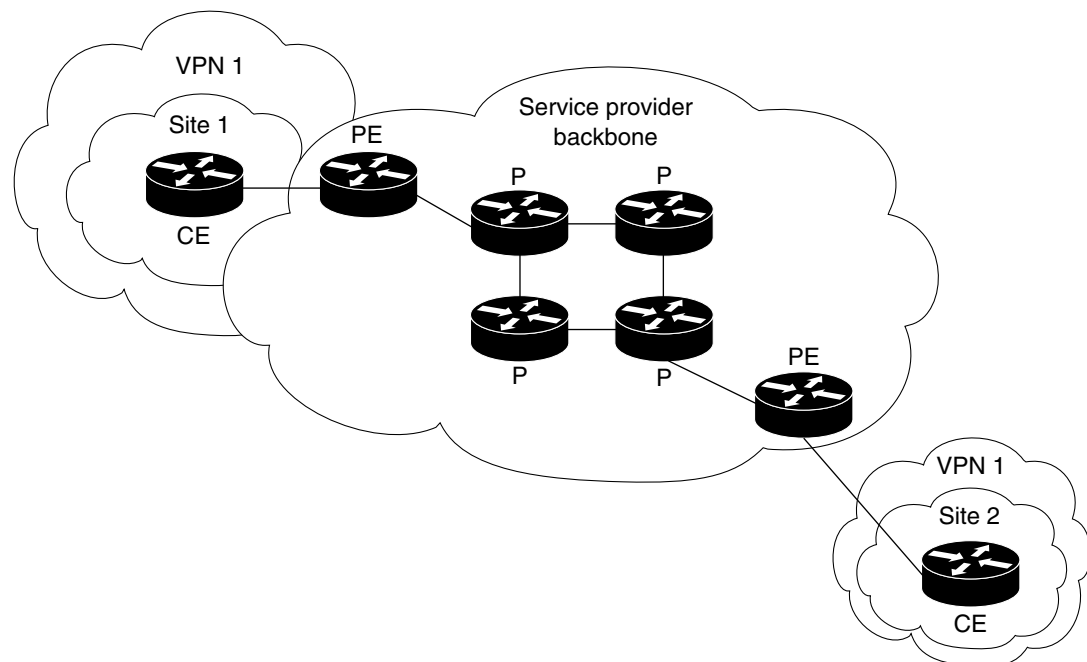
## MPLS VPN Support for EIGRP

The MPLS VPN Support for EIGRP Between Provider Edge and Customer Edge feature provides the capability to transparently connect EIGRP customer networks through an MPLS-enabled BGP core network so that EIGRP routes are redistributed through the VPN across the BGP network as internal BGP (iBGP) routes. The configuration of this feature does not require any customer equipment upgrades or configuration changes; this feature is configured only on PE routers within the service provider network.

Customer networks and remote sites are connected to each other through the MPLS VPN. The configuration of this feature allows several EIGRP sites to connect seamlessly and appear as a single network. This integration is transparent to the customer sites. When this feature is enabled, EIGRP routes are converted to iBGP routes and transported through the BGP core network. EIGRP extended community attributes are used to define EIGRP routes and preserve internal metrics. These attributes are carried across the core network by multiprotocol BGP.

[Figure 1](#) shows 2 customer EIGRP networks that are connected by the VPN over a service provider backbone: "Site 1" and "Site 2."

**Figure 1** EIGRP Connectivity Between VPN Client Sites over a Service Provider Backbone



82314

In [Figure 1](#), the EIGRP routes in Site 1 are carried through the BGP core network as iBGP routes. The EIGRP routes in "Site 1" and "Site 2" are converted to iBGP routes and EIGRP extended community attributes are appended to the iBGP routes. (See [Table 1](#) for a description of these attributes.) The EIGRP extended community attributes are appended to the EIGRP routes when they are redistributed into BGP as iBGP routes, and VPN routing information is redistributed between the PE routers by multiprotocol BGP.

The routes that originate in "Site 1" travel to the PE router that is connected to the CE router in "Site 2" of the VPN and are then converted back to EIGRP routes using the EIGRP extended community attributes. EIGRP routes are treated the same in "Site 1" and "Site 2." If the route is internal in "Site 1",

it will be internal in “Site 2”, and if the route is external in “Site 1”, it will be external in “Site 2.” All EIGRP metrics are preserved, and EIGRP metric information, along with the autonomous system, tag, and external data, is carried across the VPN over the BGP core network.

**Note**

EIGRP adjacencies, EIGRP updates, and EIGRP queries are not sent across the VPN. If a route is received from another EIGRP autonomous system without a configured metric, the route is not advertised to the CE router.

Each VPN is associated with a single VPN routing or forwarding instance (VRF). A VRF consists of an IP routing table, a CEF table, and a set of interfaces that use the CEF forwarding table. The router maintains a separate routing and CEF table for each VRF, which prevents information being sent outside the VPN and allows the same addresses to be used in several VPNs without causing problems that are associated with duplicate IP addresses.

A single EIGRP routing process can support multiple VRFs. This support is limited only by the available system resources on the router, which are determined by the number of configured VRF instances, running processes, and amount of available memory. However, only a single VRF can be supported by each VPN. Separate VRFs are unique and do not share neighbor, routing, or topology information. Redistribution between native EIGRP VRFs is not supported. An EIGRP process must be created for the default VRF even if it is not used for establishing EIGRP neighbors, and a separate VRF address family must be configured in BGP for each EIGRP VRF.

## EIGRP Extended Community Attributes

EIGRP routes are converted to iBGP routes on the PE router by the appending of EIGRP extended community attributes. The PE router uses multiprotocol BGP to distribute the VPN routing information using these extended community attributes. The BGP routes are converted back to EIGRP routes by use of the extended community attribute information when the iBGP routes reach the PE router that is connected to the destination CE router.

[Table 1](#) describes the extended community attributes that are appended to BGP routes and used to carry EIGRP information across the service provider backbone.

**Table 1 EIGRP-Specific Extended Community Attribute Descriptions**

Type	Usage	Values
<b>EIGRP Appended Attributes</b>		
Type 0x8800	EIGRP General Route Information	Route Flag and Tag
<b>EIGRP Metric Information</b>		
Type 0x8801	EIGRP Route Metric Information and Autonomous System	Autonomous System and Delay
Type 0x8802	EIGRP Route Metric Information	Reliability, Next Hop, and Bandwidth
Type 0x8803	EIGRP Route Metric Information	Reserve, Load and MTU
<b>EIGRP External Route Information</b>		

**Table 1** EIGRP-Specific Extended Community Attribute Descriptions

Type	Usage	Values
<b>EIGRP Appended Attributes</b>		
Type 0x8804	EIGRP External Route Information	Remote Autonomous System and Remote ID
Type 0x8805	EIGRP External Route Information	Remote Protocol and Remote Metric

## Benefits of MPLS VPN Support for EIGRP

### Multiple VRFs Are Supported

A single EIGRP routing process can support multiple VRFs. This support is limited only by the available system resources on the router, which are determined by the number of configured VRF instances, running processes, and amount of available memory. However, only a single VRF can be supported by each VPN.

### Seamless Integration of Existing Customer EIGRP Deployments

This feature is configured only on PE routers that provide VPN services across the service provider network. The customer need not upgrade the version of Cisco IOS software being used or make any changes to equipment or configurations.

### Secure, Scalable, and Cost-Effective Alternative

Remote sites can be seamlessly and securely connected through VPNs to customer networks. This feature provides a cost-effective alternative to traditional methods, such as WAN leased lines.

## How to Configure an MPLS VPN Using EIGRP

This section contains the following procedures:

- [Configuring the VRF for the EIGRP MPLS VPN, page 6](#) (required)
- [Configuring EIGRP Redistribution in the MPLS VPN, page 8](#) (required)
- [Configuring the PE Routers to Support the EIGRP MPLS VPN, page 11](#) (required)
- [Verifying the VPN Configuration, page 13](#) (optional)
- [Verifying PE-to-PE Connectivity, page 13](#) (optional)
- [Verifying EIGRP VRF Configuration, page 14](#) (optional)

## Configuring the VRF for the EIGRP MPLS VPN

### Creating a VRF

A VRF must be created, and a route distinguisher and route target must be configured in order for the PE routers in the BGP network to carry EIGRP routes to the EIGRP CE site. The VRF must also be associated with an interface in order for the PE router to send routing updates to the CE router. Use the following steps to create and configure the VRF and associate the VRF with an interface.

### Prerequisites

Before this feature can be configured, MPLS and CEF must be configured in the BGP network, and multiprotocol BGP and EIGRP must be configured on all PE routers that provide VPN services to CE routers.

### Restrictions

Native EIGRP VRF to VRF redistribution is not supported.

### SUMMARY STEPS

1. **enable**
2. **configure terminal**
3. **ip vrf** *vrf-name*
4. **rd** *route-distinguisher*
5. **route-target** {**import** | **export** | **both**} *route-target-ext-community*
6. **exit**
7. **interface** *type number*
8. **ip vrf forwarding** *vrf-name*
9. **ip address** *ip-address subnet-mask*
10. **end**

### DETAILED STEPS

	Command or Action	Purpose
Step 1	<b>enable</b>  <b>Example:</b> Router> enable	Enables privileged EXEC mode. <ul style="list-style-type: none"> <li>• Enter your password if prompted.</li> </ul>
Step 2	<b>configure terminal</b>  <b>Example:</b> Router# configure terminal	Enters global configuration mode.

	Command or Action	Purpose
Step 3	<p><b>ip vrf</b> <i>vrf-name</i></p> <p><b>Example:</b> Router(config)# ip vrf RED</p>	<p>Defines a VPN VRF instance, specifies the VRF name (or tag), and enters VRF configuration mode.</p> <ul style="list-style-type: none"> <li>The <b>ip vrf</b> <i>vrf-name</i> command creates a VRF routing table and a CEF table, and both are named using the <i>vrf-name</i> argument. Associated with these tables is the default route distinguisher value.</li> </ul>
Step 4	<p><b>rd</b> <i>route-distinguisher</i></p> <p><b>Example:</b> Router(config-vrf)# rd 100:1</p>	<p>Creates routing and forwarding tables for the VRF instance created in step 3.</p> <ul style="list-style-type: none"> <li>There are two formats for configuring the route distinguisher argument. It can be configured in the as-number:network number (ASN:nn) format, as shown in the example, or it can be configured in the IP address:network number format (IP-address:nn).</li> </ul>
Step 5	<p><b>route-target</b> {import   export   both} <i>route-target-extcommunity</i></p> <p><b>Example:</b> Router(config-vrf)# route-target both 100:1</p>	<p>Creates a list of import and/or export route-target extended communities for the specified VRF.</p> <ul style="list-style-type: none"> <li>There are two formats for configuring the route-target-ext-community argument. It can be configured in the as-number:network number (ASN:nn) format, as shown in the example, or it can be configured in the IP address:network number format (IP-address:nn).</li> </ul>
Step 6	<p><b>exit</b></p> <p><b>Example:</b> Router(config-vrf)# exit</p>	<p>Exits VRF configuration mode and enters global configuration mode.</p>
Step 7	<p><b>interface</b> <i>type number</i></p> <p><b>Example:</b> Router(config)# interface FastEthernet 0/0</p>	<p>Enters interface configuration mode to configure the specified interface.</p>
Step 8	<p><b>ip vrf forwarding</b> <i>vrf-name</i></p> <p><b>Example:</b> Router(config-if)# ip vrf forwarding RED</p>	<p>Associates the VRF with an interface or subinterface.</p> <ul style="list-style-type: none"> <li>The VRF name configured in this step should match the VRF name created in step 3.</li> </ul>
Step 9	<p><b>ip address</b> <i>ip-address subnet-mask</i></p> <p><b>Example:</b> Router(config-if)# ip address 10.0.0.1 255.255.255.0</p>	<p>Configures the IP address for the interface.</p> <ul style="list-style-type: none"> <li>The IP address needs to be reconfigured after you enable VRF forwarding.</li> </ul>
Step 10	<p><b>end</b></p> <p><b>Example:</b> Router(config-if)# end</p>	<p>Exits interface configuration mode and enters privileged EXEC mode.</p>

## What to Do Next

The next task is to configure the EIGRP redistribution in the MPLS VPN. Use the steps in the following section.

# Configuring EIGRP Redistribution in the MPLS VPN

## Creating the MPLS VPN

Perform this task to enable EIGRP redistribution in the MPLS VPN. This task should be applied to every PE router that provides VPN services.

## Prerequisites

Before EIGRP SoO BGP Cost Community support was introduced, BGP preferred locally sourced routes over routes learned from BGP peers. Backdoor links in an EIGRP MPLS VPN topology are preferred by BGP if the back door link is learned first. (A back door link or a route is a connection that is configured outside of the VPN between a remote and a main site. For example, a WAN leased line that connects a remote site to the corporate network).

The “pre-bestpath” point of insertion (POI) has been introduced in the BGP Cost Community feature to support mixed EIGRP VPN network topologies that contain VPN and backdoor links. This POI is applied automatically to EIGRP routes that are redistributed into BGP. The “pre-best path” POI carries the EIGRP route type and metric. This POI influences the best path calculation process by configuring BGP to consider this POI before any other comparison step. No configuration is required. This feature is enabled automatically for EIGRP VPN sites when Cisco IOS Release 12.0(27)S is installed to a PE, CE, or back door router.

For more information about the BGP Cost Community feature and the absolute value POI, refer to the BGP Cost Community feature documentation in Cisco IOS Release 12.0(27)S.

For more information about the EIGRP MPLS VPN PE-CE Site of Origin (SoO) feature, refer to the EIGRP MPLS VPN PE-CE Site of Origin (SoO) feature documentation in Cisco IOS Release 12.0(27)S.

## Restrictions

Metrics must be configured for routes from other EIGRP autonomous systems and non-EIGRP networks. If an external route is received from another EIGRP autonomous system or a non-EIGRP network without a configured metric, the route will not be advertised to the CE router. The metric can be configured in the redistribute statement by means of the **redistribute** command or the **default-metric** command.

## SUMMARY STEPS

1. **enable**
2. **configure terminal**
3. **router eigrp** *autonomous-system-number*
4. **address-family ipv4 vrf** *vrf-name*
5. **network** *ip-address wildcard-mask*
6. **redistribute bgp** [*autonomous-system-number*] [**metric** *bandwidth delay reliability load mtu*]

7. **autonomous-system** *autonomous-system-number*
8. **exit-address-family**

## DETAILED STEPS

	Command or Action	Purpose
Step 1	<p><b>enable</b></p> <p><b>Example:</b> Router&gt; enable</p>	<p>Enables privileged EXEC mode.</p> <ul style="list-style-type: none"> <li>Enter your password if prompted.</li> </ul>
Step 2	<p><b>configure terminal</b></p> <p><b>Example:</b> Router# configure terminal</p>	<p>Enters global configuration mode.</p>
Step 3	<p><b>router eigrp</b> <i>as-number</i></p> <p><b>Example:</b> Router(config)# router eigrp 1</p>	<p>Enters router configuration mode and creates an EIGRP routing process.</p> <ul style="list-style-type: none"> <li>The EIGRP routing process for the PE router is created in this step.</li> </ul>
Step 4	<p><b>address-family ipv4 vrf</b> <i>vrf-name</i></p> <p><b>Example:</b> Router(config-router)# address-family ipv4 vrf RED</p>	<p>Enters address-family configuration mode and creates a VRF.</p> <ul style="list-style-type: none"> <li>The VRF name (or tag) must match the VRF name that was created in Step 3 of the previous section.</li> </ul>
Step 5	<p><b>network</b> <i>ip-address wildcard-mask</i></p> <p><b>Example:</b> Router(config-router-af)# network 172.16.0.0 0.0.255.255</p>	<p>Specifies the network for the VRF.</p> <ul style="list-style-type: none"> <li>The network statement is used to identify which interfaces to include in EIGRP. The VRF must be configured with addresses that fall within the wildcard-mask range of the network statement.</li> </ul>
Step 6	<p><b>redistribute bgp</b> <i>autonomous-system-number</i> [<b>metric</b> <i>bandwidth delay reliability load mtu</i>] [<b>route-map</b> <i>map-name</i>]</p> <p><b>Example:</b> Router(config-router-af)# redistribute bgp 10 metric 10000 100 255 1 1500</p>	<p>Redistributes BGP into the EIGRP.</p> <ul style="list-style-type: none"> <li>The autonomous system number and metric of the BGP network are configured in this step. BGP must be redistributed into EIGRP for the CE site to accept the BGP routes that carry the EIGRP information. A metric must also be specified for the BGP network and is configured in this step.</li> </ul>
Step 7	<p><b>autonomous-system</b> <i>autonomous-system-number</i></p> <p><b>Example:</b> Router(config-router-af)# autonomous-system 101</p>	<p>Specifies the autonomous system number of the EIGRP network for the customer site.</p>
Step 8	<p><b>exit-address-family</b></p> <p><b>Example:</b> Router(config-router-af)# exit-address-family</p>	<p>Exits address family configuration mode and enters router configuration mode.</p>

## Troubleshooting Tips

If the MPLS VPN is not working properly:

- Verify the configurations on each router. Make sure that the VRF and route distinguisher have been correctly configured. Check the VRF routing table and VRF CEF table.
- Verify that there is connectivity between both PE routers. Check the PE router and other neighbors that carry the VPN. The network operator should be able to ping between the PE routers that carry the VPN to verify the neighbor relationships.

The commands in the following table can also be useful for monitoring and troubleshooting the configuration of this feature.

Command	Purpose
Router# <b>clear ip eigrp vrf</b> <i>vrf-name</i> <b>neighbor</b>	Clears EIGRP neighbors from the VRF table.
Router# <b>debug ip eigrp vrf</b> <i>vrf-name</i>	Specifies a VRF for trace debugging. <ul style="list-style-type: none"> <li>• A VRF name must be specified with the <i>vrf-name</i> argument, or the asterisk (*) can be used as a wildcard to specify all configured VRFs.</li> </ul>
Router# <b>show ip eigrp vrf</b> <i>vrf-name</i> <b>interfaces</b>	Displays EIGRP interfaces that are defined under the specified VRF. <ul style="list-style-type: none"> <li>• If an interface is specified, only that interface is displayed. Otherwise, all interfaces on which EIGRP is running as part of the specified VRF are displayed.</li> </ul>
Router# <b>show ip eigrp vrf</b> <i>vrf-name</i> <b>neighbors</b>	Displays when VRF neighbors become active and inactive. <ul style="list-style-type: none"> <li>• This command can be used to help debug transport problems.</li> </ul>
Router# <b>show ip eigrp vrf</b> <i>vrf-name</i> <b>topology</b>	Displays VRF entries in the EIGRP topology table. <ul style="list-style-type: none"> <li>• This command can be used to determine Diffusing Update Algorithm (DUAL) states and to troubleshoot possible DUAL problems.</li> </ul>
Router# <b>show ip vrf</b>	Displays the set of defined VRFs and associated interfaces. <ul style="list-style-type: none"> <li>• This command is used to verify that the correct route distinguishers (RDs) are configured for the VRF.</li> </ul>
Router# <b>show mpls interfaces</b>	Displays information about one or more interfaces that have been configured for label switching. <ul style="list-style-type: none"> <li>• This command is used to verify that MPLS is configured for interfaces that are used with this feature.</li> </ul>

## What to Do Next

The next task is to configure the PE routers to support the EIGRP MPLS VPN. Use the steps in the following section.

# Configuring the PE Routers to Support the EIGRP MPLS VPN

## Basic BGP Configuration

The BGP configuration provided in this section includes the elements necessary for configuring this feature. Steps 11 through 13 will need to be repeated on a per EIGRP VRF basis if multiple EIGRP VRFs need to be configured.

## Prerequisites

Before this feature can be configured, MPLS and CEF must be enabled in the BGP network, and multiprotocol BGP must be enabled on all PE routers that provide VPN services to CE routers.

## SUMMARY STEPS

1. **enable**
2. **configure terminal**
3. **router bgp** *autonomous-system-number*
4. **no synchronization**
5. **neighbor** *ip-address* **remote-as** *autonomous-system-number*
6. **neighbor** *ip-address* **update-source loopback** *interface-number*
7. **address-family vpnv4**
8. **neighbor** *ip-address* **activate**
9. **neighbor** *ip-address* **send-community extended**
10. **exit-address-family**
11. **address-family ipv4 vrf** *vrf-name*
12. **redistribute eigrp** *autonomous-system-number*
13. **no synchronization**
14. **exit-address-family**
15. **end**

## DETAILED STEPS

	Command or Action	Purpose
Step 1	<b>enable</b>  <b>Example:</b> Router> enable	Enables privileged EXEC mode. <ul style="list-style-type: none"><li>• Enter your password if prompted.</li></ul>
Step 2	<b>configure terminal</b>  <b>Example:</b> Router# configure terminal	Enters global configuration mode.

	Command or Action	Purpose
Step 3	<b>router bgp</b> <i>autonomous-system-number</i>  <b>Example:</b> Router(config)# router bgp 10	Enters router configuration mode, and creates a BGP routing process.
Step 4	<b>no synchronization</b>  <b>Example:</b> Router(config-router)# no synchronization	Configures BGP to send advertisements without waiting to synchronize with the IGP.
Step 5	<b>neighbor ip-address remote-as</b> <i>autonomous-system-number</i>  <b>Example:</b> Router(config-router)# neighbor 10.0.0.1 remote-as 10	Establishes peering with the specified neighbor or peer-group. <ul style="list-style-type: none"> <li>In this step, you are establishing an iBGP session with the PE router that is connected to the CE router at the other CE site.</li> </ul>
Step 6	<b>neighbor ip-address update-source loopback</b> <i>interface-number</i>  <b>Example:</b> Router(config-router)# neighbor 10.0.0.1 update-source loopback 0	Configures BGP to use any operational interface for TCP connections. <ul style="list-style-type: none"> <li>This configuration step is not required. However, the BGP routing process will be less susceptible to the effects of interface or link flapping.</li> </ul>
Step 7	<b>address-family vpnv4</b>  <b>Example:</b> Router(config-router)# address-family vpnv4	Enters address family configuration mode for configuring routing sessions that use standard IPv4 address prefixes, such as BGP, RIP, and static routing sessions.
Step 8	<b>neighbor ip-address activate</b>  <b>Example:</b> Router(config-router-af)# neighbor 10.0.0.1 activate	Establishes peering with the specified neighbor or peer-group. <ul style="list-style-type: none"> <li>In this step, you are activating the exchange of VPNv4 routing information between the PE routers.</li> </ul>
Step 9	<b>neighbor ip-address send-community extended</b>  <b>Example:</b> Router(config-router-af)# neighbor 10.0.0.1 send-community extended	Configures the local router to send extended community attribute information to the specified neighbor. <ul style="list-style-type: none"> <li>This step is required for the exchange of EIGRP extended community attributes.</li> </ul>
Step 10	<b>exit-address-family</b>  <b>Example:</b> Router(config-router-af)# exit-address-family	Exits address family configuration mode and enters router configuration mode.
Step 11	<b>address-family ipv4 vrf</b> <i>vrf-name</i>  <b>Example:</b> Router(config-router)# address-family ipv4 vrf RED	Configures an IPv4 address-family for the EIGRP VRF. <ul style="list-style-type: none"> <li>An address-family VRF needs to be configured for each EIGRP VRF that runs between the PE and CE routers.</li> </ul>

	Command or Action	Purpose
Step 12	<pre>redistribute eigrp autonomous-system-number</pre> <p><b>Example:</b> Router(config-router-af)# redistribute eigrp 101</p>	Redistributes the EIGRP VRF into BGP. <ul style="list-style-type: none"> <li>The autonomous system number from the CE network is configured in this step.</li> </ul>
Step 13	<pre>no synchronization</pre> <p><b>Example:</b> Router(config-router-af)# no synchronization</p>	Configures BGP to send advertisements without waiting to synchronize with the IGP.
Step 14	<pre>exit-address-family</pre> <p><b>Example:</b> Router(config-router-af)# exit-address-family</p>	Exits address family configuration mode and enters router configuration mode.
Step 15	<pre>end</pre> <p><b>Example:</b> Router(config-router)# end</p>	Exits address family configuration mode and enters privileged EXEC mode.

## Verifying the VPN Configuration

A route distinguisher must be configured for the VRF, and MPLS must be configured on the interfaces that carry the VRF. Use the **show ip vrf** command to verify the route distinguisher (RD) and interface that are configured for the VRF.

### SUMMARY STEPS

1. **show ip vrf**

### DETAILED STEPS

	Command or Action	Purpose
Step 1	<pre>show ip vrf</pre> <p><b>Example:</b> Router&gt; show ip vrf</p>	Displays the set of defined VRF instances and associated interfaces. <ul style="list-style-type: none"> <li>The output also maps the VRF instances to the configured route distinguisher.</li> </ul>

## Verifying PE-to-PE Connectivity

Perform this task to verify PE-to-PE connectivity in the service provider network.

### SUMMARY STEPS

1. **enable**
2. **ping** *ip-address*
3. **show ip route vrf** *vrf-name*
4. **show ip cef vrf** *vrf-name*

### DETAILED STEPS

	Command or Action	Purpose
Step 1	<b>enable</b>  <b>Example:</b> Router> enable	Enables privileged EXEC mode. <ul style="list-style-type: none"> <li>• Enter your password if prompted.</li> </ul> <b>Note</b> The <b>ping</b> command can be issued only from privileged EXEC mode. The other commands in this table can be issued from both user EXEC and privileged EXEC mode.
Step 2	<b>ping</b> <i>ip-address</i>  <b>Example:</b> Router# ping 172.16.0.1	The <b>ping</b> command can be used to verify PE to PE connectivity within the service provider network. <ul style="list-style-type: none"> <li>• If a PE router cannot be reached with the <b>ping</b> command, use the commands in the following steps to isolate the problem.</li> </ul>
Step 3	<b>show ip route vrf</b> <i>vrf-name</i>  <b>Example:</b> Router# show ip route vrf RED	Displays the IP routing table associated with a VRF instance. <ul style="list-style-type: none"> <li>• The <b>show ip route vrf</b> command is used to verify that the VRF is in the routing table. If the VRF is in the routing table but the PE router still cannot be reached with the <b>ping</b> command, proceed to the next step.</li> </ul>
Step 4	<b>show ip cef</b> [ <b>vrf</b> <i>vrf-name</i> ]  <b>Example:</b> Router# show ip cef vrf RED	Displays the CEF forwarding table associated with a VRF instance. <ul style="list-style-type: none"> <li>• The <b>show ip cef vrf</b> command is used to verify that the interfaces and networks associated with the VRF are not in the global CEF database. If the VRF route is in the global CEF table, deconfigure and reconfigure CEF.</li> </ul>

## Verifying EIGRP VRF Configuration

Use the following steps to verify EIGRP VRF configuration.

### SUMMARY STEPS

1. `enable`
2. `show ip eigrp vrf vrf-name topology`
3. `show ip bgp vpnv4 {all | rd route-distinguisher | vrf vrf-name}`

### DETAILED STEPS

	Command or Action	Purpose
Step 1	<code>enable</code>  <b>Example:</b> Router> enable	Enables privileged EXEC mode. <ul style="list-style-type: none"> <li>• Enter your password if prompted.</li> </ul>
Step 2	<code>show ip eigrp vrf vrf-name topology</code>  <b>Example:</b> Router# show ip eigrp vrf RED topology	The <code>show ip eigrp vrf</code> command verifies that the correct VRF routes are in the EIGRP topology table. <ul style="list-style-type: none"> <li>• If the VRF route is not in the EIGRP topology table, proceed to the next step.</li> </ul>
Step 3	<code>show ip bgp vpnv4 {all   rd route-distinguisher   vrf vrf-name}</code>  <b>Example:</b> Router# show ip bgp vpnv4 vrf RED	Displays VPN address information from the BGP table. <ul style="list-style-type: none"> <li>• The <code>show ip bgp vpnv4</code> command is used to verify that the route is in the BGP VRF table. If the VRF route is not in the BGP VRF, reconfigure the VRF and route distinguisher.</li> </ul>

## Configuration Examples for the EIGRP MPLS VPN

- [EIGRP MPLS VPN Configuration Example, page 15](#)
- [BGP Network Configuration Example, page 16](#)
- [EIGRP Redistribution Example, page 16](#)
- [EIGRP MPLS VPN Verification Examples, page 16](#)

### EIGRP MPLS VPN Configuration Example

The following configuration example in global configuration mode creates a VRF named RED and associates it with an interface:

```
ip vrf RED
 rd 100:1
 route-target both 100:1
 exit
interface FastEthernet 0/0
 ip vrf forwarding RED
```

```
ip address 10.0.0.1 255.255.255.0
end
```

## BGP Network Configuration Example

The following configuration example shows the minimum BGP configuration required on the PE routers to support the EIGRP MPLS VPN:

```
router bgp 65000
no synchronization
neighbor 10.0.0.1 remote-as 65000
neighbor 10.0.0.1 update-source loopback 0
address-family vpnv4
neighbor 10.0.0.1 activate
neighbor 10.0.0.1 send-community extended
exit-address-family
address-family ipv4 vrf RED
redistribute eigrp 101
no synchronization
exit-address-family
```

## EIGRP Redistribution Example

The following configuration example shows how to configure EIGRP redistribution through the MPLS VPN over the BGP core network:

```
router eigrp 1
address-family ipv4 vrf RED
network 172.16.0.0 0.0.255.255
redistribute bgp 10 metric 10000 100 255 1 1500
autonomous-system 101
exit-address-family
```

## EIGRP MPLS VPN Verification Examples

The examples in the following section show how to verify the configuration of the MPLS VPN Support for EIGRP Between Provider Edge and Customer Edge feature:

- [Verifying Route Distinguisher and MPLS Configuration Example, page 16](#)
- [Verifying PE-to-PE Connectivity Example, page 17](#)
- [Verifying EIGRP VRF Configuration Example, page 19](#)

## Verifying Route Distinguisher and MPLS Configuration Example

A route distinguisher must be configured for the VRF, and MPLS must be configured on the interfaces that carry the VRF.

Use the **show ip vrf** command to verify the route distinguisher (RD) and interface that are configured for the VRF. The VRF name, RD, and configured interface are displayed in the output. The following sample output is similar to the output that will be displayed when the **show ip vrf** command is issued:

```
Router# show ip vrf

Name                Default RD          Interfaces
BLUE                120:1
```

```

PINK                130:1                Ethernet3/0
RED                 100:1
YELLOW             110:1                Serial12/0

```

Use the **show ip eigrp vrf interfaces** command to display and verify specific information about VRFs configured under EIGRP. The interface to VRF mapping that is displayed in the output of this command should match the mapping that is displayed for the **show ip vrf** command. The following sample output is similar to the output that will be displayed when the **show ip eigrp vrf interfaces** command is issued:

```

Router# show ip eigrp vrf PINK interfaces
IP-EIGRP interfaces for process 1
          Xmit Queue   Mean   Pacing Time   Multicast   Pending
Interface Peers Un/Reliable SRTT   Un/Reliable   Flow Timer Routes
Et3/0      1      0/0       131    0/10         528         0

```

Use the **show mpls interfaces** command to verify that MPLS is configured for interfaces that need to carry any configured VRFs. The following sample output is similar to the output that will be displayed when the **show mpls interfaces** command is issued:

```

Router# show mpls interfaces
Interface          IP          Tunnel   Operational
Ethernet2/0        Yes (tdp)  No       Yes

```

## Verifying PE-to-PE Connectivity Example

The **ping** command can be used to verify PE-to-PE connectivity within the service provider network. If a PE router cannot be reached with the **ping** command, use the following steps to isolate the problem:

- Step 1** Verify that the VRF is in the routing table with the **show ip route vrf vrf-name** command.

```

Router# show ip route vrf PINK

Routing Table:PINK
Codes:C - connected, S - static, R - RIP, M - mobile, B - BGP
       D - EIGRP, EX - EIGRP external, O - OSPF, IA - OSPF inter area
       N1 - OSPF NSSA external type 1, N2 - OSPF NSSA external type 2
       E1 - OSPF external type 1, E2 - OSPF external type 2
       i - IS-IS, L1 - IS-IS level-1, L2 - IS-IS level-2, ia - IS-IS inter
area
       * - candidate default, U - per-user static route, o - ODR
       P - periodic downloaded static route

Gateway of last resort is not set

    172.16.0.0/24 is subnetted, 1 subnets
D       172.16.17.0 [90/409600] via 10.10.10.2, 1d15h, Ethernet3/0
    10.0.0.0/24 is subnetted, 1 subnets
C       10.10.10.0 is directly connected, Ethernet3/0
    10.19.0.0/24 is subnetted, 1 subnets
D       10.19.19.0 [90/409600] via 10.10.10.2, 1d15h, Ethernet3/0
    192.168.0.0/24 is subnetted, 1 subnets
B       192.168.10.0 [200/0] via 10.14.14.14, 1d15h

```

- Step 2** If the VRF is in the routing table but the PE router still cannot be reached with the **ping** command, verify that the VRF is in the CEF table with the **show ip cef vrf vrf-name** command.

```

Router# show ip cef vrf PINK

Prefix          Next Hop          Interface
0.0.0.0/0      drop              Null0 (default route handler
entry)

```

```

0.0.0.0/32          receive
172.16.17.0/24     10.10.10.2        Ethernet3/0
10.19.19.0/24     10.10.10.2        Ethernet3/0
10.10.10.0/24     attached          Ethernet3/0
10.10.10.0/32     receive
10.10.10.1/32     receive
10.10.10.2/32     10.10.10.2        Ethernet3/0
10.10.10.255/32   receive
172.16.10.0/24    10.22.10.1        Ethernet2/0
224.0.0.0/24     receive
255.255.255.255/32 receive

```

**Step 3** If the VRF is in the CEF table but the PE router still cannot be reached with the **ping** command, verify that the interfaces and networks associated with the VRF are not in the global CEF database with the **show ip cef** command.

```

Router# show ip cef
Prefix          Next Hop          Interface
0.0.0.0/0      drop              Null0 (default route handler
entry)
0.0.0.0/32     receive
10.14.14.14/32 10.22.10.1        Ethernet2/0
10.15.15.15/32 receive
10.16.16.16/32 10.22.10.1        Ethernet2/0
172.16.17.17/32 10.22.10.1        Ethernet2/0
10.22.10.0/24  attached          Ethernet2/0
10.22.10.0/32  receive
10.22.10.1/32  10.22.10.1        Ethernet2/0
10.22.10.2/32  receive
10.22.10.255/32 receive
10.23.10.0/24  10.22.10.1        Ethernet2/0
224.0.0.0/4    drop
224.0.0.0/24   receive
255.255.255.255/32 receive

```

---

If the VRF route is in the global CEF table, deconfigure and reconfigure CEF.

## Verifying EIGRP VRF Configuration Example

To verify EIGRP VRF configuration, perform the following steps:

- Step 1** Use the **show ip eigrp vrf vrf-name topology** command to verify that the correct VRF route is in the EIGRP topology table.

```
Router# show ip eigrp vrf PINK topology
IP-EIGRP Topology Table for AS(1)/ID(10.10.10.1) Routing Table:PINK

Codes:P - Passive, A - Active, U - Update, Q - Query, R - Reply,
      r - reply Status, s - sia Status

P 172.16.17.0/24, 1 successors, FD is 409600
   via 10.10.10.2 (409600/128256), Ethernet3/0
P 10.19.19.0/24, 1 successors, FD is 409600
   via 10.10.10.2 (409600/128256), Ethernet3/0
P 10.10.10.0/24, 1 successors, FD is 281600
   via Connected, Ethernet3/0
P 172.16.10.0/24, 1 successors, FD is 281600
   via Redistributed (281600/0)
```

- Step 2** If the VRF route is not in the EIGRP topology table, verify that the route is in the BGP VRF table with the **show ip bgp vpnv4 vrf vrf-name** command.

```
Router# show ip bgp vpnv4 vrf PINK
BGP table version is 17, local router ID is 10.15.15.15
Status codes:s suppressed, d damped, h history, * valid, > best, i -
internal,
      r RIB-failure, S Stale
Origin codes:i - IGP, e - EGP, ? - incomplete

   Network          Next Hop           Metric LocPrf Weight Path
Route Distinguisher:130:1 (default for vrf PINK)
*> 172.16.17.0/24    10.10.10.2         409600             32768 ?
*> 10.19.19.0/24    10.10.10.2         409600             32768 ?
*> 10.10.10.0/24    0.0.0.0            0                  32768 ?
*>i172.16.10.0/24   10.14.14.14        0                  100      0 ?
```

## Where to Go Next

For more information about the BGP Cost Community feature, refer to the BGP Cost Community feature documentation in Cisco IOS Release 12.0(27)S.

For more information about the EIGRP MPLS VPN PE-CE Site of Origin (SoO) feature, refer to the EIGRP MPLS VPN PE-CE Site of Origin (SoO) feature documentation in Cisco IOS Release 12.0(27)S.

## Additional References

The following sections provide references related to the MPLS VPN Support for EIGRP Between Provider Edge and Customer feature:

- [Related Documents, page 20](#)
- [Standards, page 20](#)
- [MIBs, page 20](#)
- [RFCs, page 21](#)
- [Technical Assistance, page 21](#)

## Related Documents

Related Topic	Document Title
BGP Cost Community	<a href="#">BGP Cost Community, Cisco IOS Release 12.0(27)S</a>
CEF commands	<a href="#">Cisco IOS Switching Services Configuration Guide, Release 12.3</a>
CEF configuration tasks	<a href="#">Cisco IOS Switching Services Command Reference, Release 12.3</a>
EIGRP commands	<a href="#">Cisco IOS IP Command Reference, Volume 2 of 4: Routing Protocols, Release 12.3</a>
EIGRP configuration tasks	<a href="#">Cisco IOS IP Configuration Guide, Release 12.3</a>
EIGRP Site of Origin	<a href="#">EIGRP MPLS VPN PE-CE Site of Origin (SoO), Cisco IOS Release 12.0(27)S.</a>
MPLS VPNs	<a href="#">MPLS Virtual Private Networks, Cisco IOS Release 12.0(5)T</a>

## Standards

Standards	Title
No new or modified standards are supported by this feature, and support for existing standards has not been modified by this feature.	—

## MIBs

MIBs	MIBs Link
No new or modified MIBs are supported by this feature, and support for existing MIBs has not been modified by this feature.	To locate and download MIBs for selected platforms, Cisco IOS releases, and feature sets, use Cisco MIB Locator found at the following URL: <a href="http://www.cisco.com/go/mibs">http://www.cisco.com/go/mibs</a>

## RFCs

RFCs	Title
RFC 1163	<i>A Border Gateway Protocol</i>
RFC 1164	<i>Application of the Border Gateway Protocol in the Internet</i>
RFC 2283	<i>Multiprotocol Extensions for BGP-4</i>
RFC 2547	<i>BGP/MPLS VPNs</i>

## Technical Assistance

Description	Link
The Cisco Technical Support website contains thousands of pages of searchable technical content, including links to products, technologies, solutions, technical tips, and tools. Registered Cisco.com users can log in from this page to access even more content.	<a href="http://www.cisco.com/techsupport">http://www.cisco.com/techsupport</a>

## Command Reference

This section documents new and modified commands only.

- [address-family ipv4 \(EIGRP\)](#)
- [autonomous-system \(EIGRP\)](#)
- [clear ip eigrp vrf neighbor](#)
- [default-metric \(EIGRP\)](#)
- [exit-address-family](#)
- [ip vrf](#)
- [network \(EIGRP\)](#)
- [rd](#)
- [redistribute \(IP\)](#)
- [show ip eigrp vrf interfaces](#)
- [show ip eigrp vrf neighbors](#)
- [show ip eigrp vrf topology](#)
- [show ip eigrp vrf traffic](#)
- [show ip protocols vrf](#)
- [show ip route vrf](#)
- [show ip vrf](#)

## address-family ipv4 (EIGRP)

To enter IPv4 address family configuration mode to configure an Enhanced Interior Gateway Routing Protocol (EIGRP) Virtual Private Network (VPN), use the **address-family ipv4** command in address family configuration mode. To remove the address family from the EIGRP configuration, use the **no** form of this command.

```
address-family ipv4 [unicast] [vrf vrf-name]
```

```
no address-family ipv4 [unicast] [vrf vrf-name]
```

### Syntax Description

<b>unicast</b>	(Optional) Specifies the unicast subaddress family.
<b>vrf vrf-name</b>	(Optional) Specifies the name of the VRF.

### Command Default

A default VRF is automatically created when this command is entered without the **vrf** keyword.

### Command Modes

Address family configuration

### Command History

Release	Modification
12.0(22)S	This command was introduced.
12.2(15)T	This command was integrated into 12.2(15)T.
12.2(18)S	This command was integrated into 12.2(18)S.
12.2(27)SBC	This command was integrated into 12.2(27)SBC.

### Usage Guidelines

The **address-family ipv4** command is used to configure IPv4 address family sessions under EIGRP. To leave address family configuration mode without removing the address family configuration, use the **exit-address-family** command.

EIGRP VPNs can be configured only under IPv4 address family configuration mode. A virtual routing and forwarding instance (VRF) and route distinguisher must be defined before the address family session can be created.

A single EIGRP routing process can support multiple VRFs. The number of VRFs that can be configured is limited only by available system resources on the router, which is determined by the number of VRFs, running processes, and available memory. However, only a single VRF can be supported by each VPN, and redistribution between different VRFs is not supported.

MPLS VPN support between PE and CE routers is configured only on PE routers that provide VPN services over the service provider backbone. The customer site does not require any changes to equipment or configurations to support the EIGRP VPN. A metric must be configured for routes to be advertised to the CE router. The metric can be configured using the **redistribute (IP)** command or configured with the **default-metric (EIGRP)** command.

**Examples**

The following example, starting in global configuration mode, configures an IPv4 address family session for the VRF named RED:

```
Router(config)# ip vrf RED
Router(config-vrf)# rd 1:1
Router(config-vrf)# exit
Router(config)# router eigrp 1
Router(config-router)# address-family ipv4 vrf RED
Router(config-router-af)# autonomous-system 101
Router(config-router-af)# network 172.16.0.0
Router(config-router-af)# default-metric 10000 100 255 1 1500
Router(config-router-af)# exit-address-family
```

**Related Commands**

Command	Description
<a href="#">default-metric (EIGRP)</a>	Sets metric for EIGRP.
<a href="#">exit-address-family</a>	Exits from address family configuration mode.
<a href="#">network (EIGRP)</a>	Specifies a list of networks for the EIGRP routing process.
<a href="#">redistribute (IP)</a>	Redistributes routes from one routing domain into another routing domain.

## autonomous-system (EIGRP)

To configure an Enhanced Interior Gateway Routing Protocol (EIGRP) routing process to run within a Virtual Private Network (VPN) routing and forwarding instance (VRF), use the **autonomous-system** command in address family configuration mode.

**autonomous-system** *as-number*

Syntax	Description
<i>as-number</i>	Specifies the autonomous system number of the EIGRP routing process.

**Command Default** No default behavior or values

**Command Modes** Address family configuration

Command History	Release	Modification
	12.0(22)S	This command was introduced.
	12.2(15)T	This command was integrated into Cisco IOS Release 12.2(15)T.
	12.2(18)S	The command was integrated into Cisco IOS Release 12.2(18)S.
	12.2(27)SBC	The command was integrated into Cisco IOS Release 12.2(27)SBC.

**Usage Guidelines** This command can be configured only if a VRF name is specified when you enter address family configuration mode.

**Examples** The following example shows how to exit address family configuration mode:

```
router eigrp 1
 address-family ipv4 vrf VRF-NAME
 autonomous-system 101
```

Related Commands	Command	Description
	<b>address-family ipv4 (EIGRP)</b>	Enters address family configuration mode for EIGRP.

# clear ip eigrp vrf neighbor

To clear neighbor entries of the specified Enhanced Interior Gateway Routing Protocol (EIGRP) virtual routing and forwarding instance (VRF) from the Routing Information Base (RIB), use the **clear ip eigrp vrf** command in privileged EXEC mode.

```
clear ip eigrp vrf {vrf-name as-number} neighbor [interface-number]
```

## Syntax Description

<i>vrf-name</i>	Specifies the name of the VRF whose EIGRP neighbors will be cleared. The * keyword can be used as a wild card to specify all VRFs.
<i>as-number</i>	Specifies the autonomous system number of the VRF whose neighbors will be cleared.
<i>interface-number</i>	(Optional) Specifies the interface that VRF neighbors were learned through. The exact interface is specified by interface number with the <i>interface-number</i> argument.

## Command Modes

Privileged EXEC

## Command History

Release	Modification
12.0(22)S	This command was introduced.
12.2(15)T	This command was integrated into 12.2(15)T.
12.2(18)S	This command was integrated into Cisco IOS Release 12.2(18)S.
12.2(27)SBC	This command was integrated into Cisco IOS Release 12.2(27)SBC.

## Examples

The following example shows how to clear EIGRP neighbors reached through the VRF named RED in autonomous system 101:

```
Router# clear ip eigrp vrf RED 101 neighbor
```

The following example shows how to clear EIGRP neighbors reached through the VRF named GREEN in autonomous-system 101 learned through Ethernet interface 0/0:

```
Router# clear ip eigrp vrf GREEN 101 neighbor ethernet 0/0
```

## Related Commands

Command	Description
<a href="#">show ip eigrp vrf interfaces</a>	Displays EIGRP interfaces that are defined under the specified VRF.
<a href="#">show ip eigrp vrf neighbors</a>	Displays neighbors discovered by EIGRP that carry VRF information.
<a href="#">show ip eigrp vrf topology</a>	Displays VRF entries in the EIGRP topology table.
<a href="#">show ip eigrp vrf traffic</a>	Displays EIGRP VRF traffic statistics.
<a href="#">show ip route vrf</a>	Displays routing protocol information that is associated with a VRF.

## default-metric (EIGRP)

To set metrics for the Enhanced Interior Gateway Routing Protocol (EIGRP), use the **default-metric** command in router configuration mode. To remove the metric value and restore the default state, use the **no** form of this command.

**default-metric** *bandwidth delay reliability loading mtu*

**no default-metric** *bandwidth delay reliability loading mtu*

Syntax Description		
	<i>bandwidth</i>	Minimum bandwidth of the route in kilobytes per second. It can be from 1 to 4294967295.
	<i>delay</i>	Route delay in tens of microseconds. It can be 1 or any positive number that is a multiple of 39.1 nanoseconds.
	<i>reliability</i>	Likelihood of successful packet transmission expressed as a number between 0 and 255. The value 255 means 100 percent reliability; 0 means no reliability.
	<i>loading</i>	Effective bandwidth of the route expressed as a number from 1 to 255 (255 is 100 percent loading).
	<i>mtu</i>	The smallest allowed value for the maximum transmission unit (MTU), expressed in bytes. It can be from 1 to 65535.

**Command Default** Only connected routes can be redistributed without a default metric. The metric of redistributed connected routes is set to 0.

**Command Modes** Address family configuration  
Router configuration

Command History	Release	Modification
	10.0	This command was introduced.
	12.0(22)S	Address family support was added in Cisco IOS Release 12.0(22)S.
	12.2(15)T	Address family support was added in Cisco IOS Release 12.2(15)T.
	12.2(18)S	Address family support was added.
	12.2(27)SBC	This command was integrated into Cisco IOS Release 12.2(27)SBC.

**Usage Guidelines** You must use a default metric to redistribute a protocol into EIGRP, unless you use the **redistribute** command. Automatic metric translations occur between IGRP and EIGRP. You do not need default metrics to redistribute IGRP or EIGRP into itself.



**Note**

The **default-metric** command does not affect EIGRP-to-EIGRP or IGRP-to-EIGRP distribution. To configure EIGRP-to-EIGRP or IGRP-to-EIGRP distribution, use route maps.

Metric defaults have been carefully set to work for a wide variety of networks. Take great care when changing these values.

Keeping the same metrics is supported only when you are redistributing from IGRP, EIGRP, or static routes.

---

**Examples**

The following example shows how the redistributed Routing Information Protocol (RIP) metrics are translated into EIGRP metrics with values as follows: bandwidth = 1000, delay = 100, reliability = 250, loading = 100, and MTU = 1500.

```
router eigrp 109
 network 172.16.0.0
 redistribute rip
 default-metric 1000 100 250 100 1500
```

---

**Related Commands**

Command	Description
<b>redistribute (IP)</b>	Redistributes routes from one routing domain into another routing domain.

# exit-address-family

To exit from address family configuration mode, use the **exit-address-family** command in address family configuration mode.

## exit-address-family

**Syntax Description** This command has no arguments or keywords.

**Command Default** No default behavior or values

**Command Modes** Address family configuration

### Command History

Release	Modification
12.0(5)T	This command was introduced.
12.0(22)S	EIGRP support was added in Cisco IOS Release 12.0(22)S.
12.2(15)T	EIGRP support was added in Cisco IOS Release 12.2(15)T.
12.2(18)S	EIGRP support was added.
12.2(27)SBC	This command was integrated into Cisco IOS Release 12.2(27)SBC.

### Usage Guidelines

This command is used to exit address family configuration mode.

This command can be abbreviated to **exit**.

### Examples

In the following example, the router is configured to exit address family configuration mode:

```
Router(config-router-af)# exit-address-family
Router(config-router-af)#
```

### Related Commands

Command	Description
<b>address-family ipv4</b>	Enters IPv4 address family configuration mode.
<b>address-family vpv4</b>	Enters VPNv4 address family configuration mode.
<b>address-family ipv6</b>	Enters IPv6 address family configuration mode.
<b>address-family nsap</b>	Enters CLNS address family configuration mode.

# ip vrf

To define a VPN routing and forwarding (VRF) instance and to enter VRF configuration mode, use the **ip vrf** command in global configuration mode. To remove a VRF instance, use the **no** form of this command.

**ip vrf** *vrf-name*

**no ip vrf** *vrf-name*

## Syntax Description

<i>vrf-name</i>	Name assigned to a VRF.
-----------------	-------------------------

## Defaults

No VRFs are defined. No import or export lists are associated with a VRF. No route maps are associated with a VRF.

## Command Modes

Global configuration

## Command History

Release	Modification
12.0(5)T	This command was introduced.
12.0(21)ST	This command was integrated into Cisco IOS Release 12.0(21)ST.
12.0(22)S	This command was integrated into Cisco IOS Release 12.0(22)S.
12.2(27)SBC	This command was integrated into Cisco IOS Release 12.2(27)SBC.

## Usage Guidelines

The **ip vrf** *vrf-name* command creates a VRF instance named *vrf-name*. To make the VRF functional, a route distinguisher must be created using the **rd** *route-distinguisher* command in VRF configuration mode. The **rd** *route-distinguisher* command creates the routing and forwarding tables and associates the route distinguisher (RD) with the VRF instance named *vrf-name*.

## Examples

The following example shows how to import a route map to a VRF:

```
ip vrf vpn1
 rd 100:2
 route-target both 100:2
 route-target import 100:1
```

## Related Commands

Command	Description
<b>ip vrf forwarding</b> (interface configuration)	Associates a VRF with an interface or subinterface.
<b>rd</b>	Creates routing and forwarding tables for a VRF and specifies the default route-distinguisher for a VPN.

## network (EIGRP)

To specify the network for an Enhanced Interior Gateway Routing Protocol (EIGRP) routing process, use the **network** command in router configuration mode. To remove an entry, use the **no** form of this command.

**network** *ip-address* [*wildcard-mask*]

**no network** *ip-address* [*wildcard-mask*]

### Syntax Description

<i>ip-address</i>	IP address of the directly connected network.
<i>wildcard-mask</i>	(Optional) Wildcard mask.

### Command Default

No networks are specified.

### Command Modes

Address family  
Router configuration

### Command History

Release	Modification
10.0	This command was introduced.
12.0(4)T	The <i>network-mask</i> argument was added.
12.0(22)S	Address family support for EIGRP was added.
12.2(15)T	Address family support for EIGRP was added.
12.2(18)S	Address family support for EIGRP was added.
12.2(27)SBC	This command was integrated into Cisco IOS Release 12.2(27)SBC.

### Usage Guidelines

When the **network** command is configured for an EIGRP routing process, the router matches one or more local interfaces. The **network** command matches only local interfaces that are configured with addresses that are within the same subnet as the address that has been configured with the **network** command. The router then establishes neighbors through the matched interfaces. There is no limit to the number of network statements (**network** commands) that can be configured on a router.

### Examples

The following example configures EIGRP autonomous system 1 and establishes neighbors through network 172.16.0.0 and 192.168.0.0:

```
router eigrp 1
 network 172.16.0.0
 network 192.168.0.0
```

# rd

To create routing and forwarding tables for a Virtual Private Network (VPN) routing and forwarding instance (VRF), use the **rd** command in VRF configuration mode.

**rd** *route-distinguisher*

<b>Syntax Description</b>	<i>route-distinguisher</i>	Adds an 8-byte value to an IPv4 prefix to create a VPN IPv4 prefix.
---------------------------	----------------------------	---

<b>Command Default</b>	There is no default. A route distinguisher (RD) must be configured for a VRF to be functional.	
------------------------	--	--

<b>Command Modes</b>	VRF configuration	
----------------------	-------------------	--

<b>Command History</b>	<b>Release</b>	<b>Modification</b>
	12.0(5)T	This command was introduced.
12.2(27)SBC	This command was integrated into Cisco IOS Release 12.2(27)SBC.	

<b>Usage Guidelines</b>	An RD creates routing and forwarding tables and specifies the default route distinguisher for a VPN. The RD is added to the beginning of the customer's IPv4 prefixes to change them into globally unique VPN-IPv4 prefixes.
-------------------------	--

Either the RD is an ASN-relative RD, in which case it is composed of an autonomous system number and an arbitrary number, or it is an IP-address-relative RD, in which case it is composed of an IP address and an arbitrary number.

You can enter an RD in either of these formats:

*16-bit AS number: your 32-bit number*

For example, 101:3.

*32-bit IP address: your 16-bit number*

For example, 192.168.122.15:1.

<b>Examples</b>	The following example shows how to configure a default RD for two VRFs. It illustrates the use of both AS-relative and IP-address-relative RDs:
-----------------	---

```
Router(config)# ip vrf vrf_blue
Router(config-vrf)# rd 100:3
Router (config-vrf)# exit
Router(config)# ip vrf vrf_red
Router(config-vrf)# rd 173.13.0.12:200
```

**Related Commands**

<b>Command</b>	<b>Description</b>
<b>ip vrf</b>	Configures a VRF routing table.
<b>show ip vrf</b>	Displays the set of defined VRFs and associated interfaces.

# redistribute (IP)

To redistribute routes from one routing domain into another routing domain, use the **redistribute** command in router configuration mode. To disable redistribution, use the **no** form of this command.

```
redistribute protocol [process-id] { level-1 | level-1-2 | level-2 } [as-number] [metric metric-value]
[metric-type type-value] [match { internal | external 1 | external 2 }]
[tag tag-value] [route-map map-tag] [subnets]
```

```
no redistribute protocol [process-id] { level-1 | level-1-2 | level-2 } [as-number] [metric
metric-value] [metric-type type-value] [match { internal | external 1 | external 2 }]
[tag tag-value] [route-map map-tag] [subnets]
```

Syntax Description	
<i>protocol</i>	<p>Source protocol from which routes are being redistributed. It can be one of the following keywords: <b>bgp</b>, <b>connected</b>, <b>eigrp</b>, <b>isis</b>, <b>mobile</b>, <b>ospf</b>, <b>static</b> [<b>ip</b>], or <b>rip</b>.</p> <p>The <b>static</b> [<b>ip</b>] keyword is used to redistribute IP static routes. The optional <b>ip</b> keyword is used when redistributing into the Intermediate System-to-Intermediate System (IS-IS) protocol.</p> <p>The <b>connected</b> keyword refers to routes that are established automatically by virtue of having enabled IP on an interface. For routing protocols such as Open Shortest Path First (OSPF) and IS-IS, these routes will be redistributed as external to the autonomous system.</p>
<i>process-id</i>	<p>(Optional) For the <b>bgp</b> or <b>eigrp</b> keyword, this is an autonomous system number, which is a 16-bit decimal number.</p> <p>For the <b>isis</b> keyword, this is an optional <i>tag</i> value that defines a meaningful name for a routing process. You can specify only one IS-IS process per router. Creating a name for a routing process means that you use names when configuring routing.</p> <p>For the <b>ospf</b> keyword, this is an appropriate OSPF process ID from which routes are to be redistributed. This identifies the routing process. This value takes the form of a nonzero decimal number.</p> <p>For the <b>rip</b> keyword, no <i>process-id</i> value is needed.</p>
<b>level-1</b>	Specifies that for IS-IS Level 1 routes are redistributed into other IP routing protocols independently.
<b>level-1-2</b>	Specifies that for IS-IS both Level 1 and Level 2 routes are redistributed into other IP routing protocols.
<b>level-2</b>	Specifies that for IS-IS Level 2 routes are redistributed into other IP routing protocols independently.
<i>as-number</i>	(Optional) Autonomous system number for the redistributed route.
<b>metric</b> <i>metric-value</i>	(Optional) When redistributing from one OSPF process to another OSPF process on the same router, the metric will be carried through from one process to the other if no metric value is specified. When redistributing other processes to an OSPF process, the default metric is 20 when no metric value is specified.

<b>metric-type</b> <i>type-value</i>	<p>(Optional) For OSPF, the external link type associated with the default route advertised into the OSPF routing domain. It can be one of two values:</p> <ul style="list-style-type: none"> <li>• <b>1</b>—Type 1 external route</li> <li>• <b>2</b>—Type 2 external route</li> </ul> <p>If a <b>metric-type</b> is not specified, the Cisco IOS software adopts a Type 2 external route.</p> <p>For IS-IS, it can be one of two values:</p> <ul style="list-style-type: none"> <li>• <b>internal</b>—IS-IS metric that is &lt; 63.</li> <li>• <b>external</b>—IS-IS metric that is &gt; 64 &lt; 128.</li> </ul> <p>The default is <b>internal</b>.</p>
<b>match</b> { <b>internal</b>   <b>external 1</b>   <b>external 2</b> }	<p>(Optional) For the criteria by which OSPF routes are redistributed into other routing domains. It can be one of the following:</p> <ul style="list-style-type: none"> <li>• <b>internal</b>—Routes that are internal to a specific autonomous system.</li> <li>• <b>external 1</b>—Routes that are external to the autonomous system, but are imported into OSPF as Type 1 external route.</li> <li>• <b>external 2</b>—Routes that are external to the autonomous system, but are imported into OSPF as Type 2 external route.</li> </ul>
<b>tag</b> <i>tag-value</i>	<p>(Optional) 32-bit decimal value attached to each external route. This is not used by OSPF itself. It may be used to communicate information between Autonomous System Boundary Routers (ASBRs). If none is specified, then the remote autonomous system number is used for routes from Border Gateway Protocol (BGP) and Exterior Gateway Protocol (EGP); for other protocols, zero (0) is used.</p>
<b>route-map</b>	<p>(Optional) Route map that should be interrogated to filter the importation of routes from this source routing protocol to the current routing protocol. If not specified, all routes are redistributed. If this keyword is specified, but no route map tags are listed, no routes will be imported.</p>
<i>map-tag</i>	<p>(Optional) Identifier of a configured route map.</p>
<b>subnets</b>	<p>(Optional) For redistributing routes into OSPF, the scope of redistribution for the specified protocol.</p>

**Command Default**

Route redistribution is disabled.

*protocol*: No source protocol is defined.

*process-id*: No process ID is defined.

**metric** *metric-value*: 0

**metric-type** *type-value*: Type 2 external route

**match internal** | **external**: Internal, external 1, external 2

**external**: Internal

**tag** *tag-value*: If no value is specified, the remote autonomous system number is used for routes from BGP and EGP; for other protocols, the default is 0.

**route-map** *map-tag*: If the **route-map** keyword is not entered, all routes are redistributed; if no *map-tag* value is entered, no routes are imported.

**subnets**: No subnets are defined.

### Command Modes

Router configuration  
Address family configuration

### Command History

Release	Modification
10.0	This command was introduced.
12.0(5)T	Address family configuration mode was added.
12.0(22)S	Address family support under EIGRP was added in Cisco IOS Release 12.0(22)S.
12.2(15)T	Address family support under EIGRP was added in Cisco IOS Release 12.2(15)T.
12.2(18)S	Address family support under EIGRP was added.
12.2(27)SBC	This command was integrated into Cisco IOS Release 12.2(27)SBC.

### Usage Guidelines

Changing or disabling any keyword will not affect the state of other keywords.

A router receiving a link-state protocol with an internal metric will consider the cost of the route from itself to the redistributing router plus the advertised cost to reach the destination. An external metric only considers the advertised metric to reach the destination.

Routes learned from IP routing protocols can be redistributed at Level 1 into an attached area or at Level 2. The **level-1-2** keyword allows both Level 1 and Level 2 routes in a single command.

Redistributed routing information must be filtered by the **distribute-list out** router configuration command. This guideline ensures that only those routes intended by the administrator are passed along to the receiving routing protocol.

Whenever you use the **redistribute** or the **default-information** router configuration commands to redistribute routes into an OSPF routing domain, the router automatically becomes an ASBR. However, an ASBR does not, by default, generate a *default route* into the OSPF routing domain.

When routes are redistributed into OSPF from protocols other than OSPF or BGP, and no metric has been specified with the **metric-type** keyword and *type-value* argument, OSPF will use 20 as the default metric. When routes are redistributed into OSPF from BGP, OSPF will use 1 as the default metric. When routes are redistributed from one OSPF process to another OSPF process, Autonomous system (AS) external and not-so-stubby-area (NSSA) routes will use 20 as the default metric. When intra-area and inter-area routes are redistributed between OSPF processes, the internal OSPF metric from the redistribution source process is advertised as the external metric in the redistribution destination process. (This is the only case in which the routing table metric will be preserved when routes are redistributed into OSPF.)

When routes are redistributed into OSPF, only routes that are not subnetted are redistributed if the **subnets** keyword is not specified.

Routes configured with the **connected** keyword affected by this **redistribute** command are the routes not specified by the **network** router configuration command.

You cannot use the **default-metric** command to affect the metric used to advertise **connected** routes.

**Note**

The **metric** value specified in the **redistribute** command supersedes the **metric** value specified using the **default-metric** command.

Default redistribution of IGP or EGP into BGP is not allowed unless the **default-information originate** router configuration command is specified.

**Examples**

The following example shows how OSPF routes are redistributed into a BGP domain:

```
router bgp 109
 redistribute ospf
```

The following example causes Enhanced Interior Gateway Routing Protocol (EIGRP) routes to be redistributed into an OSPF domain:

```
router ospf 110
 redistribute eigrp
```

The following example causes the specified EIGRP process routes to be redistributed into an OSPF domain. The EIGRP-derived metric will be remapped to 100 and RIP routes to 200.

```
router ospf 109
 redistribute eigrp 108 metric 100 subnets
 redistribute rip metric 200 subnets
```

The following example configures BGP routes to be redistributed into IS-IS. The link-state cost is specified as 5, and the metric type will be set to external, indicating that it has lower priority than internal metrics.

```
router isis
 redistribute bgp 120 metric 5 metric-type external
```

In the following example, network 172.16.0.0 will appear as an external link-state advertisement (LSA) in OSPF 1 with a cost of 100 (the cost is preserved):

```
interface ethernet 0
 ip address 172.16.0.1 255.0.0.0
 ip ospf cost 100
interface ethernet 1
 ip address 10.0.0.1 255.0.0.0
!
router ospf 1
 network 10.0.0.0 0.255.255.255 area 0
 redistribute ospf 2 subnet
router ospf 2
 network 172.16.0.0 0.255.255.255 area 0
```

**Related Commands**

Command	Description
<b>address-family ipv4 (BGP)</b>	Places the router in address family configuration mode for configuring routing sessions such as BGP, RIP, or static routing sessions that use standard IPv4 address prefixes.
<b>address-family vpnv4</b>	Places the router in address family configuration mode for configuring routing sessions such as BGP, RIP, or static routing sessions that use standard VPNv4 address prefixes.
<b>default-information originate (BGP)</b>	Allows the redistribution of network 0.0.0.0 into BGP.

<b>Command</b>	<b>Description</b>
<b>default-information originate (IS-IS)</b>	Generates a default route into an IS-IS routing domain.
<b>default-information originate (OSPF)</b>	Generates a default route into an OSPF routing domain.
<b>distribute-list out (IP)</b>	Suppresses networks from being advertised in updates.
<b>route-map (IP)</b>	Defines the conditions for redistributing routes from one routing protocol into another, or enables policy routing.
<b>show route-map</b>	Displays all route maps configured or only the one specified.

# show ip eigrp vrf interfaces

To display information about interfaces that carry VPN routing and forwarding (VRF) information and are configured for Enhanced Interior Gateway Routing Protocol (EIGRP), use the **show ip eigrp vrf interfaces** command in privileged EXEC mode.

```
show ip eigrp vrf {vrf-name | *} interfaces [as-number] [interface-type] [detail interface-type]
[static interface-type]
```

## Syntax Description

<i>vrf-name</i>	Specifies the VRF name. The * keyword can be used as a wild card to display all VRFs, instead of specifying a single VRF with the <i>vrf-name</i> argument.
<i>as-number</i>	(Optional) Specifies the autonomous system number.
<i>interface-type</i>	(Optional) Specifies the VRF interface for which to display EIGRP information.
<b>detail</b> <i>interface-type</i>	(Optional) Displays detailed VRF peer information. The interface can be specified after this keyword is entered.
<b>static</b> <i>interface-type</i>	(Optional) Displays VRF information for static neighbors. The interface can be specified after this keyword is entered. The <i>interface-type</i> argument allows you to display information about static neighbors for VRFs that are configured on specific interfaces.

## Command Modes

Privileged EXEC

## Command History

Release	Modification
12.0(22)S	This command was introduced.
12.2(15)T	This command was integrated into 12.2(15)T.
12.2(18)S	This command was integrated into Cisco IOS Release 12.2(18)S.
12.2(27)SBC	This command was integrated into Cisco IOS Release 12.2(27)SBC.

## Usage Guidelines

Use the **show ip eigrp vrf interfaces** command to display EIGRP interfaces that are defined under the specified VRF. If an interface is specified with the *interface-type* argument, only the specified interface is displayed. Otherwise, all interfaces on which EIGRP is running as part of the specified VRF are displayed.

## Examples

The following is sample output from the **show ip eigrp vrf interfaces** command:

```
Router# show ip eigrp vrf VRF-PINK interfaces
IP-EIGRP interfaces for process 1
```

Interface	Peers	Xmit Queue Un/Reliable	Mean SRTT	Pacing Time Un/Reliable	Multicast Flow Timer	Pending Routes
Et3/0	1	0/0	131	0/10	528	0

Table 2 describes the significant fields shown in the display.

**Table 2** *show ip eigrp vrf interfaces Field Descriptions*

Field	Description
IP-EIGRP interfaces for process...	Displays the autonomous-system number for the specified VRF.
Interface	Interface over which EIGRP is configured.
Peers	Number of directly connected EIGRP neighbors.
Xmit Queue Un/Reliable	Number of packets remaining in the Unreliable and Reliable transmit queues.
Mean SRTT	Mean smooth round-trip time (SRTT) interval (in milliseconds).
Pacing Time Un/Reliable	Pacing time used to determine when EIGRP packets should be sent out the interface (unreliable and reliable packets).
Multicast Flow Timer	Maximum number of seconds in which the router will send multicast EIGRP packets.
Pending Routes	Number of routes in the packets in the transmit queue waiting to be sent.

#### Related Commands

Command	Description
<a href="#">clear ip eigrp vrf neighbor</a>	Clears neighbor entries of the specified VRF from the RIB.
<a href="#">show ip eigrp vrf neighbors</a>	Displays neighbors discovered by EIGRP that carry VRF information.
<a href="#">show ip eigrp vrf topology</a>	Displays VRF entries in the EIGRP topology table.
<a href="#">show ip eigrp vrf traffic</a>	Displays EIGRP VRF traffic statistics.

# show ip eigrp vrf neighbors

To display Enhanced Interior Gateway Routing Protocol (EIGRP) neighbors that are on interfaces that are part of the specified Virtual Private Network (VPN) routing and forwarding instance (VRF), use the **show ip eigrp vrf neighbors** command privileged EXEC mode.

```
show ip eigrp vrf {vrf-name | *} neighbors [as-number] [interface-type] [detail interface-type]
[static interface-type]
```

## Syntax Description

<i>vrf-name</i>	Specifies the VRF name. The * keyword can be used as a wild card to display all VRFs, instead of specifying a single VRF with the <i>vrf-name</i> argument.
<i>as-number</i>	(optional) Specifies the autonomous system number.
<i>interface-type</i>	(optional) Specifies the interface to display neighbor information under the specified VRF.
<b>detail</b> <i>interface-type</i>	(optional) Displays detailed VRF peer information. The interface can be specified after this keyword is entered.
<b>static</b> <i>interface-type</i>	(optional) Displays VRF information for static neighbors. The interface can be specified after this keyword is entered. The <i>interface-type</i> argument allows you to display information about static neighbors for VRFs that are configured on specific interfaces.

## Command Modes

Privileged EXEC

## Command History

Release	Modification
12.0(22)S	This command was introduced.
12.2(15)T	This command was integrated into 12.2(15)T.
12.2(18)S	This command was integrated into Cisco IOS Release 12.2(18)S.
12.2(27)SBC	This command was integrated into Cisco IOS Release 12.2(27)SBC.

## Usage Guidelines

Use the **show ip eigrp vrf neighbors** command to determine when VRF neighbors become active and inactive. This command is also useful for debugging certain types of transport problems.

## Examples

The following is sample output from the **show ip eigrp vrf neighbors** command:

```
Router# show ip eigrp vrf VRF-GREEN neighbors
IP-EIGRP neighbors for process 1
H   Address                Interface          Hold Uptime    SRTT   RTO   Q
Seq Type
                               (sec)           (ms)          Cnt
Num
0   10.10.10.2              Et3/0             10 1d16h      131   786   0   3
```

[Table 3](#) describes the significant fields shown in the display.

**Table 3** *show ip eigrp vrf neighbors Field Descriptions*

<b>Field</b>	<b>Description</b>
IP-EIGRP neighbors for process...	Displays the autonomous-system number for the specified EIGRP VRF.
Address	IP address of the EIGRP peer.
Interface	Interface on which the router is receiving hello packets from the peer.
Hold Uptime	Length of time (in seconds) that the Cisco IOS software will wait to hear from the peer before declaring it down, and the length in time (in seconds) since the local router first heard from this neighbor.
SRTT	Smooth round-trip time. This is the number of milliseconds required for an EIGRP packet to be sent to this neighbor and for the local router to receive an acknowledgment of that packet.
RTO	Retransmission timeout (in milliseconds). This is the amount of time the software waits before resending a packet from the retransmission queue to a neighbor.
Q	Number of EIGRP packets (update, query, and reply) that the software is waiting to send.

# show ip eigrp vrf topology

To display Virtual Private Network (VPN) routing and forwarding instance (VRF) entries in the Enhanced Interior Gateway Routing Protocol (EIGRP) topology table, use the **show ip eigrp topology** command in privileged EXEC mode.

```
show ip eigrp vrf {vrf-name | *} topology [as-number] [ip-address [mask]] [active | all-links | pending | summary | zero-successors]
```

## Syntax Description

<i>vrf-name</i>	Specifies the VRF name. The * keyword can be used as a wild card to display all VRFs, instead of specifying a single VRF with the <i>vrf-name</i> argument.
<i>as-number</i>	(Optional) Autonomous system number.
<i>ip-address</i>	(Optional) IP address. When specified with a mask, a detailed description of the entry is provided.
<i>mask</i>	(Optional) Subnet mask.
<b>active</b>	(Optional) Displays only active entries in the EIGRP topology table.
<b>all-links</b>	(Optional) Displays all entries in the EIGRP topology table.
<b>pending</b>	(Optional) Displays all entries in the EIGRP topology table that are waiting for an update from a neighbor or are waiting to reply to a neighbor.
<b>summary</b>	(Optional) Displays a summary of the EIGRP topology table.
<b>zero-successors</b>	(Optional) Displays available routes in the EIGRP topology table.

## Command Modes

Privileged EXEC

## Command History

Release	Modification
12.0(22)S	This command was introduced.
12.2(15)T	This command was integrated into 12.2(15)T.
12.2(18)S	This command was integrated into Cisco IOS Release 12.2(18)S.
12.2(27)SBC	This command was integrated into Cisco IOS Release 12.2(27)SBC.

## Usage Guidelines

The **show ip eigrp vrf topology** command can be used without any keywords or arguments, but you must specify either a VRF name or use the \* character as a wild card. If this command entered this way, only routes that are feasible successors are displayed. The **show ip eigrp vrf topology** command can be used to determine Diffusing Update Algorithm (DUAL) states and to debug possible DUAL problems.

## Examples

The following is sample output from the **show ip eigrp vrf topology** command:

```
Router# show ip eigrp vrf VRF-PINK topology
IP-EIGRP Topology Table for AS(1)/ID(192.168.10.1) Routing Table:VRF-PINK
```

Codes:P - Passive, A - Active, U - Update, Q - Query, R - Reply,  
r - reply Status, s - sia Status

```
P 10.17.17.0/24, 1 successors, FD is 409600
    via 10.10.10.2 (409600/128256), Ethernet3/0
P 172.16.19.0/24, 1 successors, FD is 409600
    via 10.10.10.2 (409600/128256), Ethernet3/0
P 192.168.10.0/24, 1 successors, FD is 281600
    via Connected, Ethernet3/0
P 10.10.10.0/24, 1 successors, FD is 281600
    via Redistributed (281600/0)
```

Table 4 describes the significant fields shown in the display.

**Table 4** *show ip vrf eigrp topology Field Descriptions*

Field	Description
Codes	State of this topology table entry. Passive and Active refer to the EIGRP state with respect to this destination; Update, Query, and Reply refer to the type of packet that is being sent.
P—Passive	No EIGRP computations are being performed for this destination.
A—Active	EIGRP computations are being performed for this destination.
U—Update	An update packet was sent to this destination.
Q—Query	A query packet was sent to this destination.
R—Reply	A reply packet was sent to this destination.
r—reply Status	Flag that is set after the software has sent a query and is waiting for a reply.
s—sia Status	Flag that is set if a route is stuck in active state.
successors	Number of successors. This number corresponds to the number of next hops in the IP routing table. If “successors” is capitalized, then the route or next hop is in a transition state.
FD	Feasible distance. The feasible distance is the best metric to reach the destination or the best metric that was known when the route went active. This value is used in the feasibility condition check. If the reported distance of the router (the metric after the slash) is less than the feasible distance, the feasibility condition is met and that path is a feasible successor. Once the software determines it has a feasible successor, it need not send a query for that destination.
replies	(Not shown in the output) Number of replies that are still outstanding (have not been received) with respect to this destination. This information appears only when the destination is in Active state.
state	(Not shown in the output) Exact EIGRP state that this destination is in. It can be the number 0, 1, 2, or 3. This information appears only when the destination is in the active state.
via	IP address of the peer that told the software about this destination. The first N of these entries, where N is the number of successors, is the current successors. The remaining entries on the list are feasible successors.

**Table 4**      *show ip vrf eigrp topology Field Descriptions (continued)*

<b>Field</b>	<b>Description</b>
(409600/128256)	The first number is the EIGRP metric that represents the cost to the destination. The second number is the EIGRP metric that this peer advertised.
Ethernet 3/0	Interface from which this information was learned.

# show ip eigrp vrf traffic

To display sent and received statistics for Enhanced Interior Gateway Routing Protocol (EIGRP) Virtual Private Networking (VPN) routing and forwarding instance (VRF) packets, use the **show ip eigrp vrf traffic** command in privileged EXEC mode.

```
show ip eigrp vrf {vrf-name | *} traffic [as-number]
```

Syntax Description	Parameter	Description
	<i>vrf-name</i>	Specifies the VRF name. The * keyword can be used as a wild card to display all VRFs, instead of specifying a single VRF with the <i>vrf-name</i> argument.
	<i>as-number</i>	(Optional) Specifies the autonomous system number.

**Command Modes** Privileged EXEC

Command History	Release	Modification
	12.0(22)S	This command was introduced.
	12.2(15)T	This command was integrated into 12.2(15)T.
	12.2(18)S	This command was integrated into Cisco IOS Release 12.2(18)S.
	12.2(27)SBC	This command was integrated into Cisco IOS Release 12.2(27)SBC.

## Examples

The following is sample output from the **show ip eigrp vrf traffic** command:

```
Router# show ip eigrp vrf VRF-RED traffic
IP-EIGRP Traffic Statistics for AS 101
  Hellos sent/received: 600/585
  Updates sent/received: 23/22
  Queries sent/received: 7/0
  Replies sent/received: 0/6
  Acks sent/received: 55/42
  Input queue high water mark 0, 0 drops
```

[Table 5](#) describes the significant fields shown in the display.

**Table 5** *show ip eigrp vrf traffic Field Descriptions*

Field	Description
IP-EIGRP Traffic Statistics for AS...	Displays the autonomous system number for the specified EIGRP VRF
Hellos sent/received	Number of hello packets sent and received
Updates sent/received	Number of update packets sent and received
Queries sent/received	Number of query packets sent and received
Replies sent/received	Number of reply packets sent and received

**Table 5**      *show ip eigrp vrf traffic Field Descriptions (continued)*

<b>Field</b>	<b>Description</b>
Acks sent/received	Number of acknowledgment packets sent and received
Input queue high water mark..., ... drops	Number of received packets that are approaching the maximum receive threshold and number of dropped packets

# show ip protocols vrf

To display the routing protocol information associated with a Virtual Private Network (VPN) routing/forwarding instance (VRF), use the **show ip protocols vrf** command in user EXEC or privileged EXEC mode.

**show ip protocols vrf** *vrf-name*

## Syntax Description

<i>vrf-name</i>	Name assigned to a VRF.
-----------------	-------------------------

## Command Modes

User EXEC  
Privileged EXEC

## Command History

Release	Modification
12.0(5)T	This command was introduced.
12.0(22)S	The summary keyword was added. EIGRP VRF support was added.
12.2(15)T	The summary keyword was added. EIGRP VRF support was added.
12.2(18)S	The summary keyword was added. EIGRP VRF support was added.
12.2(27)SBC	This command was integrated into Cisco IOS Release 12.2(27)SBC.

## Usage Guidelines

Use this command to display routing information associated with a VRF.

## Examples

The following example shows information about a VRF named vpn1:

```
Router# show ip protocols vrf vpn1

Routing Protocol is "bgp 100"
  Sending updates every 60 seconds, next due in 0 sec
  Outgoing update filter list for all interfaces is
  Incoming update filter list for all interfaces is
  IGP synchronization is disabled
  Automatic route summarization is disabled
  Redistributing:connected, static
  Routing for Networks:
  Routing Information Sources:
    Gateway         Distance      Last Update
    10.13.13.13      200          02:20:54
    10.18.18.18      200          03:26:15
  Distance:external 20 internal 200 local 200
```

[Table 6](#) describes the significant fields shown in the display.

**Table 6**      *show ip protocols vrf Field Descriptions*

<b>Field</b>	<b>Description</b>
Gateway	Displays the IP address of the router identifier for all routers in the network
Distance	Displays the metric used to access the destination route
Last Update	Displays the last time the routing table was updated from the source

**Related Commands**

<b>Command</b>	<b>Description</b>
<b>show ip vrf</b>	Displays the set of defined VRFs and associated interfaces.

## show ip route vrf

To display the IP routing table associated with a Virtual Private Network (VPN) routing and forwarding (VRF) instance, use the **show ip route vrf** command in user EXEC or privileged EXEC mode.

```
show ip route vrf vrf-name [connected] [protocol [as-number] [tag] [output-modifiers]] [ip-prefix]
[list number [output-modifiers]] [profile] [static [output-modifiers]] [summary
[output-modifiers]] [supernets-only [output-modifiers]]
```

### Syntax Description

<i>vrf-name</i>	Name assigned to the VRF.
<b>connected</b>	(Optional) Displays all connected routes in a VRF.
<i>protocol</i>	(Optional) To specify a routing protocol, use one of the following keywords: <b>bgp</b> , <b>egp</b> , <b>eigrp</b> , <b>hello</b> , <b>igrp</b> , <b>isis</b> , <b>ospf</b> , or <b>rip</b> .
<i>as-number</i>	(Optional) Autonomous system number.
<i>tag</i>	(Optional) Cisco IOS routing area label.
<i>output-modifiers</i>	(Optional) For a list of associated keywords and arguments, use context-sensitive help.
<i>ip-prefix</i>	(Optional) Specifies a network to display.
<b>list number</b>	(Optional) Specifies the IP access list to display.
<b>profile</b>	(Optional) Displays the IP routing table profile.
<b>static</b>	(Optional) Displays static routes.
<b>summary</b>	(Optional) Displays a summary of routes.
<b>supernets-only</b>	(Optional) Displays supernet entries only.

### Command Modes

User EXEC  
Privileged EXEC

### Command History

Release	Modification
12.0(5)T	This command was introduced.
12.2(2)T	The <i>ip-prefix</i> argument was added. The output from the <b>show ip route vrf vrf-name ip-prefix</b> command was enhanced to display information on the multipaths to the specified network.
12.2(14)S	This command was integrated into Cisco IOS Release 12.2(14)S.
12.0(22)S	Enhanced Interior Gateway Routing Protocol (EIGRP) VRF support was added.
12.2(15)T	EIGRP VRF support was integrated into Cisco IOS Release 12.2(15)T.
12.2(18)S	EIGRP VRF support was integrated into Cisco IOS Release 12.2(18)S.
12.2(27)SBC	This command was integrated into Cisco IOS Release 12.2(27)SBC.

### Usage Guidelines

This command displays specified information from the IP routing table of a VRF.

**Examples**

This example shows the IP routing table associated with the VRF named vrf1:

```
Router# show ip route vrf vrf1

Codes: C - connected, S - static, I - IGRP, R - RIP, M - mobile, B - BGP
       D - EIGRP, EX - EIGRP external, O - OSPF, IA - OSPF inter area
       N1 - OSPF NSSA external type 1, N2 - OSPF NSSA external type 2
       E1 - OSPF external type 1, E2 - OSPF external type 2, E - EGP
       i - IS-IS, L1 - IS-IS level-1, L2 - IS-IS level-2, * - candidate default
       U - per-user static route, o - ODR
       T - traffic engineered route

Gateway of last resort is not set

B    10.0.0.0/8 [200/0] via 10.13.13.13, 00:24:19
C    10.0.0.0/8 is directly connected, Ethernet1/3
B    10.0.0.0/8 [20/0] via 10.0.0.1, 02:10:22
B    10.0.0.0/8 [200/0] via 10.13.13.13, 00:24:20
```

This example shows BGP entries in the IP routing table associated with the VRF named vrf1:

```
Router# show ip route vrf vrf1 bgp

B 10.0.0.0/8 [200/0] via 10.13.13.13, 03:44:14
B 10.0.0.0/8 [20/0] via 10.0.0.1, 03:44:12
B 10.0.0.0/8 [200/0] via 10.13.13.13, 03:43:14
```

This example shows the IP routing table associated with a VRF named PATH and network 10.22.22.0:

```
Router# show ip route vrf PATH 10.22.22.0

Routing entry for 10.22.22.0/24
  Known via "bgp 1", distance 200, metric 0
  Tag 22, type internal
  Last update from 10.22.5.10 00:01:07 ago
  Routing Descriptor Blocks:
  * 10.22.7.8 (Default-IP-Routing-Table), from 10.11.3.4, 00:01:07 ago
    Route metric is 0, traffic share count is 1
    AS Hops 1
  10.22.1.9 (Default-IP-Routing-Table), from 10.11.1.2, 00:01:07 ago
    Route metric is 0, traffic share count is 1
    AS Hops 1
  10.22.6.10 (Default-IP-Routing-Table), from 10.11.6.7, 00:01:07 ago
    Route metric is 0, traffic share count is 1
    AS Hops 1
  10.22.4.10 (Default-IP-Routing-Table), from 10.11.4.5, 00:01:07 ago
    Route metric is 0, traffic share count is 1
    AS Hops 1
  10.22.5.10 (Default-IP-Routing-Table), from 10.11.5.6, 00:01:07 ago
    Route metric is 0, traffic share count is 1
    AS Hops 1
```

[Table 7](#) describes the significant fields shown when the `show ip route vrf vrf-name ip-prefix` command is used.

**Table 7** *show ip route vrf Field Descriptions*

Field	Description
Routing entry for 10.22.22.0/24	Network number.
Known via ...	Indicates how the route was derived.
distance	Administrative distance of the information source.

**Table 7** *show ip route vrf Field Descriptions (continued)*

Field	Description
metric	The metric to reach the destination network.
Tag	Integer that is used to implement the route.
type	Indicates that the route is an L1 type or L2 type route.
Last update from 10.22.5.10	Indicates the IP address of a router that is the next hop to the remote network and the router interface on which the last update arrived.
<i>hh:mm:ss</i> ago	Specifies the last time the route was updated (in hours:minutes:seconds).
Routing Descriptor Blocks:	Displays the next hop IP address followed by the information source.
<i>ip-address</i> , from <i>ip-address</i> , <i>hh:mm:ss</i> ago	Indicates the next hop address, the address of the gateway that sent the update, and the time that has elapsed since this update was received (in hours:minutes:seconds).
Route metric	This value is the best metric for this routing descriptor block.
traffic share count	Number of uses for this routing descriptor block.
AS Hops	Number of hops to the destination or to the router where the route first enters internal BGP (iBGP).

**Related Commands**

Command	Description
<b>show ip cache</b>	Displays the Cisco Express forwarding table associated with a VRF.
<b>show ip vrf</b>	Displays the set of defined VRFs and associated interfaces.

# show ip vrf

To display the set of defined Virtual Private Network (VPN) routing/forwarding instances (VRFs) and associated interfaces, use the **show ip vrf** command in privileged EXEC mode.

```
show ip vrf [brief | detail | interfaces | id] [vrf-name] [output-modifiers]
```

Syntax	Description
<b>brief</b>	(Optional) Displays concise information on the VRFs and associated interfaces.
<b>detail</b>	(Optional) Displays detailed information on the VRFs and associated interfaces.
<b>interfaces</b>	(Optional) Displays detailed information about all interfaces bound to a particular VRF or any VRF.
<b>id</b>	(Optional) Displays the VPN IDs that are configured in a PE router for different VPNs.
<i>vrf-name</i>	(Optional) Name assigned to a VRF.
<i>output-modifiers</i>	(Optional) For a list of associated keywords and arguments, use context-sensitive help.

**Defaults** When no keywords or arguments are specified, the command shows concise information about all configured VRFs.

**Command Modes** Privileged EXEC

Command History	Release	Modification
	12.0(5)T	This command was introduced.
	12.0(17)ST	This command was modified to include the <b>id</b> keyword, and VPN ID information was added to the output of the <b>show ip vrf detail</b> command.
	12.2(4)B	This command was integrated into Cisco IOS Release 12.2(4)B.
	12.2(8)T	This command was integrated into Cisco IOS Release 12.2(8)T.
	12.3(6)	This command was integrated into Cisco IOS Release 12.3(6). The command shows the downstream VRF for each associated VAI.
	12.0(22)S	EIGRP VRF support was added.
	12.2(15)T	EIGRP VRF support was integrated into Cisco IOS Release 12.2(15)T.
	12.2(18)S	EIGRP VRF support was integrated into Cisco IOS Release 12.2(18)S.
	12.2(27)SBC	This command was integrated into Cisco IOS Release 12.2(27)SBC.

**Usage Guidelines** Use this command to display information about VRFs. Two levels of detail are available:

- The **brief** keyword (or no keyword) displays concise information.
- The **detail** keyword displays all information.

To display information about all interfaces bound to a particular VRF, or to any VRF, use the **interfaces** keyword. To display information about VPN IDs assigned to a PE router, use the **id** keyword.

## Examples

The following example displays information about all the VRFs configured on the router, including the downstream VRF for each associated VAI. The lines that are highlighted (for documentation purposes only) indicate the downstream VRF.

```
Router# show ip vrf

Name      Default RD  Interface
D         2:0        Loopback2
          Virtual-Access3 [D]
          Virtual-Access4 [D]

U         2:1        Virtual-Access3
          Virtual-Access4
```

Table 8 describes the significant fields shown in the display.

**Table 8** show ip vrf Field Descriptions

Field	Description
Name	Specifies the VRF name
Default RD	Specifies the default route distinguisher
Interface	Specifies the network interface

The following example displays detailed information about all of the VRFs configured on the router, including all of the VAIs associated with each VRF:

```
Router# show ip vrf detail

VRF D; default RD 2:0; default VPNID <not set>
  Interfaces:
    Loopback2          Virtual-Access3 [D]  Virtual-Access4 [D]
  Connected addresses are not in global routing table
  Export VPN route-target communities
    RT:2:0
  Import VPN route-target communities
    RT:2:1
  No import route-map
  No export route-map
VRF U; default RD 2:1; default VPNID <not set>
  Interfaces:
    Virtual-Access3    Virtual-Access4
  Connected addresses are not in global routing table
  No Export VPN route-target communities
  Import VPN route-target communities
    RT:2:1
  No import route-map
  No export route-map
```

Table 9 describes the significant fields shown in the display.

**Table 9** *show ip vrf detail Field Descriptions*

Field	Description
VPNID	Specifies the VPN ID assigned to the VRF
Interfaces	Specifies the network interfaces
Virtual-Accessn [D]	Specifies the downstream VRF
Export	Specifies VPN route-target export communities
Import	Specifies VPN route-target import communities

The following example shows the interfaces bound to a particular VRF:

```
Router# show ip vrf interfaces

Interface      IP-Address      VRF              Protocol
Ethernet2      130.22.0.33    blue_vrf         up
Ethernet4      130.77.0.33    hub              up
Router#
```

Table 10 describes the significant fields shown in the display.

**Table 10** *show ip vrf interfaces Field Descriptions*

Field	Description
Interface	Specifies the network interfaces for a VRF
IP-Address	Specifies the IP address of a VRF interface
VRF	Specifies the VRF name
Protocol	Displays the state of the protocol (up or down) for each VRF interface

The following is sample output that shows all the VPN IDs that are configured in the router and their associated VRF names and VRF route distinguishers (RDs):

```
Router# show ip vrf id
VPN Id      Name          RD
2:3        vpn2          <not set>
A1:3F6C    vpn1          100:1
```

Table 11 describes the significant fields shown in the display.

**Table 11** *show ip vrf id Field Descriptions*

Field	Description
VPN ID	Specifies the VPN ID assigned to the VRF
Name	Specifies the VRF name
RD	Specifies the route distinguisher

**Related Commands**

Command	Description
<b>import map</b>	Configures an import route map for a VRF
<b>ip vrf</b>	Configures a VRF routing table

Command	Description
<b>ip vrf forwarding (interface configuration)</b>	Associates a VRF with an interface or subinterface
<b>rd</b>	Creates routing and forwarding tables for a VRF
<b>route-target</b>	Creates a route-target extended community for a VRF
<b>vpn id</b>	Assigns a VPN ID to a VRF

CCVP, the Cisco logo, and Welcome to the Human Network are trademarks of Cisco Systems, Inc.; Changing the Way We Work, Live, Play, and Learn is a service mark of Cisco Systems, Inc.; and Access Registrar, Aironet, Catalyst, CCDA, CCDP, CCIE, CCIP, CCNA, CCNP, CCSP, Cisco, the Cisco Certified Internetwork Expert logo, Cisco IOS, Cisco Press, Cisco Systems, Cisco Systems Capital, the Cisco Systems logo, Cisco Unity, Enterprise/Solver, EtherChannel, EtherFast, EtherSwitch, Fast Step, Follow Me Browsing, FormShare, GigaDrive, HomeLink, Internet Quotient, IOS, iPhone, IP/TV, iQ Expertise, the iQ logo, iQ Net Readiness Scorecard, iQuick Study, LightStream, Linksys, MeetingPlace, MGX, Networkers, Networking Academy, Network Registrar, PIX, ProConnect, ScriptShare, SMARTnet, StackWise, The Fastest Way to Increase Your Internet Quotient, and TransPath are registered trademarks of Cisco Systems, Inc. and/or its affiliates in the United States and certain other countries.

All other trademarks mentioned in this document or Website are the property of their respective owners. The use of the word partner does not imply a partnership relationship between Cisco and any other company. (0711R)

© 2003, 2005 Cisco Systems, Inc. All rights reserved.

■ show ip vrf