



# Cisco Resource Pool Manager CLID/DNIS Call Discriminator

---

This feature module describes the Calling Line Identification (CLID) and Dialed Number Information Service (DNIS) Call Discriminator feature, which rejects calls based on a list of calling party numbers that you provide. The Cisco Resource Pool Manager (RPM) CLID/DNIS Call Discriminator screens a call based on CLID/DNIS, and prevents it from reaching the called party as early as possible before the call is answered.

This feature module contains the following sections:

- Feature Overview, page 1
- Supported Platforms, page 5
- Supported Standards, MIBs, and RFCs, page 5
- Prerequisites, page 5
- Configuration Tasks, page 5
- Configuration Examples, page 9
- Command Reference, page 13

## Feature Overview

The Cisco RPM CLID/DNIS Call Discriminator feature lets you specify a list of calling party numbers and/or called party numbers to be rejected for inbound calls. You can implement CLID/DNIS screening by expanding the existing call screening or Cisco RPM call discriminator feature. CLID/DNIS call screening provides an additional way to screen calls based on CLID/DNIS for both local and remote RPM.

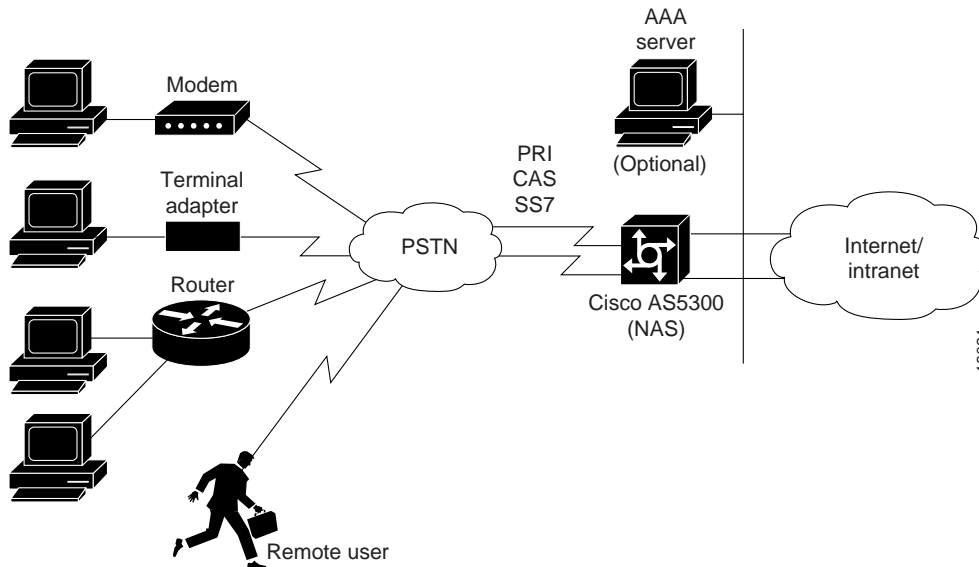
Cisco RPM enables telephone companies and Internet service providers (ISPs) to share dial resources for wholesale and retail dial network services. With RPM, telcos and ISPs can count, control, and manage dial resources and provide accounting for shared resources when implementing different service-level agreements.

Resource pool management can be configured in Cisco network access servers (NASs) or, optionally, using one or more external Cisco Resource Pool Manager Servers (RPMs). For more information on resource pool management, see the *Resource Pool Management*, Release 12.0 and *Resource Pool Management with Direct Remote Services*, Release 12.0 documents.

DNIS and ISDN call screening is already available in Cisco RPM using Cisco IOS software Releases 12.(0)4XI and higher. Cisco IOS Release 12.1(5)T introduces CLID call screening call discriminator that can be used along with the existing DNIS or ISDN screening.

Figure 1 shows the network configuration for the CLID/DNIS call screening feature.

**Figure 1** CLID/DNIS Screening Network



Cisco RPM manages both incoming calls and outgoing call sessions. Cisco RPM differentiates dial customers through configured customer profiles based on DNIS and call type.

The customer profile is where resources are allocated. The customer profile defines how and when to answer a call.

The following sections describe the components of Cisco RPM that enable this feature. For more information, see the *Resource Pool Management with Direct Remote Services*, Release 12.0 document.

## DNIS Groups

A DNIS group is a configured list of DNIS called party numbers that correspond to the numbers dialed to access particular customers, service offerings, or both. For example, if a customer from phone number 000-1234 calls a number 000-5678, the DNIS provides information on the number dialed—000-5678.

DNIS groups are used to select customer profiles or to specify a list of numbers to reject if the group is associated with a call discriminator.

Cisco RPM checks the DNIS number of inbound calls against the configured DNIS groups, and selects a customer profile based on the following criteria:

- If Cisco RPM finds a match, it uses the configured information in the customer profile to which it assigns the DNIS group.
- If Cisco RPM does not find a match, it rejects the call.

A DNIS/call type sequence can be associated with only one customer profile.

## Call Types

The following call types are supported in the Cisco RPM:

- Speech
- Digital
- V.110
- V.120



**Note**

---

Voice over IP, Fax over IP, and dial-out calls are not currently supported.

---

Call types are used within a customer profile to assign calls to the appropriate resource based on:

- Q.931 bearer capability for ISDN PRI and SS7 calls
- Static DNIS group configuration for CAS (CT1, CT3, and CE1) calls



**Note**

---

For information on SS7 implementation for RPM, see Cisco Resource Pool Manager Server 1.0 SS7 Implementation on Cisco Connection Online (CCO) at [http://www.cisco.com/univercd/cc/td/doc/product/access/acs\\_soft/rpms/rpms\\_1-0/rpmsnote.htm](http://www.cisco.com/univercd/cc/td/doc/product/access/acs_soft/rpms/rpms_1-0/rpmsnote.htm).

---

## CLID Groups

A CLID group is a configured list of CLID calling party numbers. The CLID group specifies a list of numbers to reject if the group is associated with a call discriminator. For example, if a customer from phone number 000-1234 calls a number 000-5678, the CLID provides information on the calling party number—000-1234.

A CLID/call type sequence can be associated only with one CLID group.

## Discriminator Profiles

Cisco RPM discriminator profiles enable you to process calls differently based on the call type and CLID/DNIS combination. Resource pool management offers a call discrimination feature that rejects calls based on a CLID group and/or a DNIS group and a call type filter. When a call arrives at the NAS, the CLID and/or DNIS and the call type are matched against a table of disallowed calls. If the CLID and/or DNIS and call type match entries in this table, the call is rejected before it is assigned Cisco NAS resources, or before any other Cisco RPM processing occurs.

You can use the following types of discriminators for call screening:

- ISDN discriminator—Accepts a call if the calling number and/or called party matches a number in a group of numbers configured (ISDN group). This is also called white box screening. If you create an ISDN group, only the calling numbers specified in the group are accepted.
- DNIS discriminator—Accepts a call if the called party number matches a number in a group of numbers configured (DNIS group). If you set up a DNIS group, only the called party numbers in the group are accepted. DNIS gives you information about the called party.

- Cisco RPM CLID/DNIS discriminator—Rejects a call if the calling number matches a number in a group of numbers configured (CLID/DNIS group). This is also called black box screening.

The Cisco RPM CLID/DNIS Call Discriminator feature is independent of ISDN or DNIS screening done by other subsystems. ISDN or DNIS screening and Cisco RPM CLID/DNIS screening can both be present in the same system. Both features are executed if configured. Similarly, if DNIS PreAuthorization using authentication, authorization, and accounting (AAA) is configured, it is present in addition to Cisco RPM CLID/DNIS screening.

In Cisco RPM CLID/DNIS screening, the discriminator can be either a CLID discriminator, a DNIS discriminator, or a discriminator that screens on both the CLID and DNIS. The resulting discrimination logic is:

1. If a discriminator contains just DNIS groups, then it is a DNIS discriminator that ignores CLID. The DNIS discriminator blocks the call if the called number is in a DNIS group that the call type references.
2. If a discriminator contains just CLID groups, then it is a CLID discriminator that ignores DNIS. The CLID discriminator blocks the call if the calling number is in a CLID group that the call type references.
3. If a discriminator contains both CLID and DNIS groups, then it is a logical AND discriminator. This discriminator blocks the call if the calling number/called number are in the CLID/DNIS group that the call type references.

## Benefits

Cisco RPM CLID/DNIS Call Discriminator:

- Provides a mechanism to reject calls based on CLID or DNIS or both.
- Occurs early in the system before the call is answered.
- Provides a locally-configured discriminator that is independent of remote servers in the system.

## Restrictions

- The Cisco RPM CLID/DNIS Call Discriminator must have Cisco RPM configured.
- CLID screening is not available to channel-associated signalling (CAS) interrupt level calls.
- Cisco RPM requires the NPE 300 processor when implemented on the Cisco AS5800.
- Resource pool management services with MICA modems must be used.
- Modem pooling and resource pool management are not compatible.

## Related Features and Technologies

- Authentication, Authorization, and Accounting (AAA)

## Related Documents

- *Cisco AS5300 Software Configuration Guide*, Release 12.1
- *Cisco AS5400 Software Configuration Guide*, Release 12.1

- *Cisco AS5800 Access Server Software ICG*, Release 12.1
- *Cisco Resource Pool Manager Server Configuration Guide*, Release 12.1
- *Cisco Resource Pool Manager Server Installation Guide*, Release 12.1
- *Cisco Resource Pool Manager Server Solutions Guide*, Release 12.1
- *Cisco IOS Dial Services Configuration Guide: Network Services*, Release 12.1
- *Cisco IOS Dial Services Configuration Guide: Terminal Services*, Release 12.1
- *Cisco IOS Dial Services Command Reference*, Release 12.1

## Supported Platforms

- Cisco AS5300
- Cisco AS5400
- Cisco AS5800

## Supported Standards, MIBs, and RFCs

### Standards

No new or modified standards are supported by this feature.

### MIBs

No new or modified MIBs are supported by this feature.

To obtain lists of MIBs supported by platform and Cisco IOS release and to download MIB modules, go to the Cisco MIB web site on Cisco Connection Online (CCO) at <http://www.cisco.com/public/sw-center/netmgmt/cmtk/mibs.shtml>.

### RFCs

No new or modified RFCs are supported by this feature.

## Prerequisites

- Cisco AS5300, Cisco AS5400, or Cisco AS5800 with a minimum of 16 MB Flash memory and 128 MB DRAM memory, configured for Voice over IP (VoIP) as an H.323-compliant gateway.
- Cisco IOS Release 12.1(5)T or later installed.

## Configuration Tasks

See the following sections for configuring the Cisco RPM CLID/DNIS Call Discriminator feature. Each task in the list is identified as either optional or required:

- Enabling Resource Pool Management, page 6 (Required)
- Creating DNIS Groups, page 6 (Optional)

- Creating CLID Groups, page 7 (Optional)
- Configuring Discriminator Profiles, page 8 (Required)

## Enabling Resource Pool Management

To enable resource pool management on a Cisco NAS, perform the following step, beginning in global configuration mode.

	Command	Purpose
Step 1	Router(config)# <b>resource-pool</b> { <b>enable</b>   <b>disable</b> }	Enables Cisco RPM.

## Creating DNIS Groups

This configuration task is optional. For default DNIS service, no DNIS group configuration is required. The following characteristics and restrictions apply to DNIS group configuration:

- Each DNIS group/call type combination can apply to only one customer profile.
- You can use a maximum of four default DNIS groups (one for each call-type).
- You must statically configure CAS call-types.
- You can use x, X or . as wildcards within each number.

To create DNIS groups, perform the following steps, beginning in global configuration mode:

	Command	Purpose
Step 1	Router(config)# <b>dialer dnis group</b> <i>dnis-group-name</i>	Lets you create and populate a DNIS group, which is then added to a profile (customer or discriminator) by using the <b>dnis group</b> command within that profile's configuration mode. The DNIS group name can have a maximum of 23 characters.  See the <i>Resource Pool Management with Direct Remote Services</i> , Release 12.0 document for information on configuring customer profiles.

	Command	Purpose
Step 2	Router(config-dnis-group)# <b>call-type cas</b> { <i>digital</i>   <i>speech</i> }	Statically sets the call-type override for incoming CAS calls to either digital or speech.
Step 3	Router(config-dnis-group)# <b>number</b> <i>number</i>	<p>Adds a DNIS number to the dialer DNIS group to be used in the customer profile. The DNIS number can have a maximum of 65 characters. You can use <b>x</b>, <b>X</b> or <b>.</b> as wildcards in a DNIS number. The DNIS screening feature rejects this number if it matches the DNIS of an incoming call. You can use <b>x</b>, <b>X</b> or <b>.</b> as wildcards within each CLID number. The CLID screening feature rejects this number if it matches the CLID of an incoming call.</p> <p>Repeat this command for each DNIS number that you want to configure.</p>

## Creating CLID Groups

You can add multiple CLID groups to a discriminator profile. You can organize CLID numbers for a customer or service type into a CLID group. Add all CLID numbers into one CLID group, or subdivide the CLID numbers using criteria such as call type, geographical location, or division.

To create CLID groups, perform the following steps, beginning in global configuration mode:

	Command	Purpose
Step 1	Router(config)# <b>dialer clid group</b> <i>name</i>	Creates a CLID group, assigns it a name with a maximum of 23 characters, and enters CLID configuration mode. The CLID group must be the same as the group specified in the customer profile configuration. See the <i>Resource Pool Management with Direct Remote Services</i> , Release 12.0 document for information on configuring customer profiles.
Step 2	Router(config-clid-group)# <b>number</b> <i>number</i>	<p>Enters CLID configuration mode, and adds a CLID number to the dialer CLID group that is used in the customer profile. The CLID number can have a maximum of 65 characters. You can use <b>x</b>, <b>X</b> or <b>.</b> as wildcards within each CLID number. The CLID screening feature rejects this number if it matches the CLID of an incoming call.</p> <p>Repeat this command for each DNIS number that you want to configure.</p>

## Configuring Discriminator Profiles

Discriminator profiles enable you to process calls differently based on the call type and CLID/DNIS combination. The section, *Discriminator Profiles*, page 3 describes the different types of discriminator profiles that you can create.

To configure discriminator profiles for RPM implementation, perform the following steps, beginning in global configuration mode:

	Command	Purpose
Step 1	Router(config)# <b>resource-pool profile discriminator</b> <i>name</i>	Creates a call discriminator profile and assigns it a name that can have a maximum of 23 characters.
Step 2	Router(config-call-d)# <b>call-type</b> { <b>all</b>   <b>digital</b>   <b>speech</b>   <b>v110</b>   <b>v120</b> }	Specifies the type of calls you want to block. The NAS will not answer the call type you specify.
Step 3	Router(config-call-d)# <b>clid group</b> { <b>default</b>   <i>name</i> }	Optional. Associates a CLID group with the discriminator. If you do not specify a value for the CLID group name, the default CLID group is used. Any CLID number coming in on a call is in its respective default group unless it is specifically assigned a value for the CLID group name.  After a CLID group is associated with a call type in a discriminator, it cannot be used in any other discriminator.
Step 4	Router(config-call-d)# <b>dnis group</b> { <b>default</b>   <i>name</i> <i>name</i> }	Optional. Associates a group of DNIS numbers with the discriminator. If you do not specify a DNIS group name, the default DNIS group is used. Any DNIS number coming in on a call is in its respective default group unless it is specifically assigned a DNIS group name.  After a DNIS group is associated with a call type in a discriminator, it cannot be used in any other discriminator.  See the section, <i>Creating DNIS Groups</i> , page 6 for information on creating DNIS groups.



### Note

To create a call discriminator profile, you must specify both a call-type and a DNIS/CLID group. Once a DNIS/CLID group is associated with a call type in a discriminator, it cannot be used in any other discriminator.

## Verifying Your Settings

**Step 1** Use the **show resource-pool discriminator** *name* command to verify the call discriminator profiles that you configured.

If you enter the **show resource-pool discriminator** command without including a call discriminator name, a list of all current call discriminator profiles appears.

If you enter a call discriminator profile *name* with the **show resource-pool discriminator** command, the number of calls rejected by the selected call discriminator appears.

```
Router# show resource-pool discriminator
List of Call Discriminator Profiles:
  deny_CLID
Router# show resource-pool discriminator deny_CLID
  1 calls rejected
```

**Step 2** Use the **show dialer** command to display general diagnostic information for interfaces configured for the dialer.

```
Router# show dialer [interface] type number
```

## Configuration Examples

This section provides the following configuration examples:

- DNIS Discriminator Example, page 10
- CLID Discriminator Example, page 11

## DNIS Discriminator Example

The following is a sample configuration for a DNIS discriminator. The commands to enable resource pool management, configure a customer profile, create DNIS groups, and add numbers to the DNIS groups are in bold.

```

aaa new-model
!
! Enable resource pool management
resource-pool enable
!
resource-pool group resource digital
  range limit 20
!
! Configure customer profile
resource-pool profile customer cp1
limit base-size all
limit overflow-size 0
resource digital digital
dnis group dgp2
!
resource-pool profile discriminator rpd1
call_type digital
dnis group dgp1
!
isdn switch-type primary-5ess
!
controller T1 0
  framing esf
  clock source line primary
  linecode b8zs
  pri-group timeslots 1-24
!
interface Loopback1
  ip address 192.168.0.0 255.255.255.0
!
interface Serial0:23
  ip unnumbered Loopback1
  encapsulation ppp
  ip mroute-cache
  dialer-group 1
  isdn switch-type primary-5ess
  no peer default ip address
  ppp authentication chap
!
! Configure DNIS groups
dialer dnis group dgp1
  number 5552003
  number 3456789
  number 2345678
  number 1234567
!
dialer dnis group dgp2
  number 89898989
  number 5551003
!
dialer-list 1 protocol ip permit
!

```

## CLID Discriminator Example

The following is a sample configuration of a CLID discriminator. The commands to enable resource pool management, configure resource groups, configure customer profiles, configure CLID groups and DNIS groups, and add them to discriminator profiles are in bold.

```

!
version 12.1
! Enable resource pool management
resource-pool enable
!
! Configure resource groups
resource-pool group resource digital
  range limit 20
!
! Configure customer profiles
resource-pool profile customer cp1
  limit base-size all
  limit overflow-size 0
  resource digital digital
dnis group dgp2
!
! Configure discriminator profiles
resource-pool profile discriminator disc1
  call-type digital
clid group clidgpx
!
resource-pool profile discriminator disc2
  call-type digital
  clid group clidgpa
!
ip subnet-zero
!
isdn switch-type primary-5ess
chat-script dial ABORT BUSY "" AT dgp2 "ATDT \T" TIMEOUT 30 CONNECT \c
!
!
ip local pool default 192.168.13.181 192.168.13.226
ip classless
ip route 171.0.0.0 255.0.0.0 Ethernet0
ip route 172.0.0.0 255.0.0.0 Ethernet0
no ip http server
!
!
! Configure DNIS groups
dialer dnis group dgp1
  number 4085551003
  number 5552003
  number 2223333
  number 3456789
  number 2345678
  number 1234567
!
dialer dnis group dgp2
  number 89898989
  number 4084442002
  number 4085552002
  number 5551003
!
dialer clid group clidgpa
  number 12321224
!
! Configure CLID groups

```

```

dialer clid group clidgp1
  number 2121212121
  number 4085552002
!
dialer clid group clidgpy
  number 1212121212
!
dialer clid group clidgpx
  number 4089871234
!
dialer clid group clidgpz
  number 5656456
dialer-list 1 protocol ip permit
!
!
!
line con 0
  exec-timeout 0 0
  logging synchronous
  transport input none
line 1 96
  no exec
  exec-timeout 0 0
  autoselect ppp
line aux 0
line vty 0 4
  exec-timeout 0 0
  transport input none
!
scheduler interval 1000
end

```

## CLID and DNIS Discriminator Example

The following example shows a subsection from a CLID and DNIS (logical AND) discriminator configuration:

```

!
!config subsection to define a LOGICAL AND type (clid AND dnis) RM Discriminator
!
resource-pool enable
!
resource-pool group resource digital
range limit 20
!
resource-pool profile customer cp1
limit base-size all
limit overflow-size 0
resource digital digital
dnis group default
!
resource-pool profile discriminator blockThese
call-type digital
dnis group blockedDNIS
clid group blockedCLID
!
dialer dnis group blockedDNIS
number 1234567
number 2345678
number 3456789
number 2223333

```

```
number 5552003
number 4085551003
!
dialer clid group blockedCLID
number 5551003
number 4085552002
number 4084442002
number 89898989
!
```

## Command Reference

This section documents new or modified commands. All other commands used with this feature are documented in the Cisco IOS Release 12.1 command reference publications.

- **clid group**
- **dialer clid group**
- **number**
- **resource-pool call treatment discriminator**
- **resource-pool profile discriminator**
- **show resource-pool discriminator**

# clid group

To add a Calling Line Identification (CLID) group to a discriminator, use the **clid group** CLID configuration command. To remove a CLID group from a discriminator, use the **no** form of this command.

**clid group** { **default** | *name* }

**no clid group** { **default** | *name* }

## Syntax Description

<b>default</b>	Uses the default discrimination profile in the Cisco Resource Pool Manager (RPM). Any CLID number coming in on a call is in its respective default group unless it is specifically assigned a clid-group-name. Allows a specified customer profile to accept all CLID numbers coming into the access server. For example, a stray CLID number not listed in any customer profile passes through this default CLID group. Most customer profiles do not have this option configured.
<i>name</i>	Assigns a name (with a maximum of 23 characters) to the CLID group. You can add an existing CLID group or one that is to be defined. Discrimination does not happen until the CLID group is defined.

## Defaults

CLID screening is not used.

## Command Modes

CLID configuration mode

## Command History

Release	Modification
12.1(5)T	This command was introduced.

## Usage Guidelines

Use the **clid group** command to add a CLID group (which specifies the calls to reject) to the discriminator. If you use the default option, CLID call screening is not used.

## Examples

The following example shows a call discriminator named **clidDeny** that is created and configured to block digital calls from the CLID group named **clidgp1**.

```
Router(config)# resource-pool profile discriminator clidDeny
Router(config-call-d)# call-type digital
Router(config-call-d)# clid group clidgp1
```

## Related Commands

Command	Description
<b>call type</b>	Specifies the type of calls you want to block.
<b>resource-pool profile discriminator</b>	Creates a call discrimination profile and assigns it a name.

# dialer clid group

To create a Calling Line Identification (CLID) group in the resource pool and assign it a name, use the **dialer clid group** global configuration command. To remove a CLID group from the resource pool, use the **no** form of this command.

**dialer clid group** *name*

**no dialer clid group** *name*

<b>Syntax Description</b>	<i>name</i>	Name of the CLID group created in the resource pool.						
<b>Defaults</b>	No default behavior or values.							
<b>Command Modes</b>	Global configuration mode							
<b>Command History</b>	<table border="1"> <thead> <tr> <th>Release</th> <th>Modification</th> </tr> </thead> <tbody> <tr> <td>12.1(5)T</td> <td>This command was introduced.</td> </tr> </tbody> </table>	Release	Modification	12.1(5)T	This command was introduced.			
Release	Modification							
12.1(5)T	This command was introduced.							
<b>Usage Guidelines</b>	<p>Use the <b>dialer clid group</b> command to create a CLID group and assign it a name. The CLID group name must be the same as the name used when configuring the customer profile.</p> <p>Customer profiles are configured with a DNIS group or CLID group or both, and call type. The DNIS and CLID (or both) and call type of the incoming call is used to find the appropriate customer profile.</p>							
<b>Examples</b>	<p>The following example shows the command to configure a CLID group named <b>clidgp1</b>. After you enter this command, the router prompt changes to the CLID configuration mode.</p> <pre>Router(config)# dialer clid group clidgp1 Router(config-clid-group)#</pre>							
<b>Related Commands</b>	<table border="1"> <thead> <tr> <th>Command</th> <th>Description</th> </tr> </thead> <tbody> <tr> <td><b>number</b></td> <td>Places a number in a CLID group</td> </tr> <tr> <td><b>resource-pool call treatment discriminator</b></td> <td>Configures a CLID group in a discriminator.</td> </tr> </tbody> </table>	Command	Description	<b>number</b>	Places a number in a CLID group	<b>resource-pool call treatment discriminator</b>	Configures a CLID group in a discriminator.	
Command	Description							
<b>number</b>	Places a number in a CLID group							
<b>resource-pool call treatment discriminator</b>	Configures a CLID group in a discriminator.							

# number

To place a number in a Calling Line Identification (CLID) group, use the **number** CLID configuration command. To remove a number from a CLID group, use the **no** form of this command.

**number** *clid-number*

**no number** *clid-number*

<b>Syntax Description</b>	<i>clid-number</i>	Number placed in the CLID group. The CLID number can have a maximum of 65 characters. The CLID screening feature rejects this number if it matches the CLID of an incoming call.  Valid CLID numbers are all numeric, or numbers that contain the wildcard <b>x</b> . You can use <b>x</b> , <b>X</b> or <b>.</b> (period) as wildcards within each CLID number. The <b>*</b> (asterisk) wildcard is not accepted.
---------------------------	--------------------	--

<b>Defaults</b>	No default behavior or values.
-----------------	--------------------------------

<b>Command Modes</b>	CLID configuration mode
----------------------	-------------------------

<b>Command History</b>	<b>Release</b>	<b>Modification</b>
	12.0(4)XI	This command was introduced.
	12.1(5)T	This command was modified to add CLID numbers to a CLID group as well DNIS numbers to a DNIS group.

<b>Usage Guidelines</b>	You can organize CLID numbers for a customer or service type into a CLID group. You can add multiple CLID groups to a customer profile. Add all CLID numbers into one CLID group, or subdivide the CLID numbers using criteria such as call type, geographical location, or division.
-------------------------	---

<b>Examples</b>	The following example shows how to assign a number to the CLID group, <b>clidgp1</b> .
-----------------	--

```
Router(config)# dialer clid group clidgp1
Router(config-clid-group)# number 2121212121
```

<b>Related Commands</b>	<b>Command</b>	<b>Description</b>
	<b>clid group</b>	Adds a CLID group to a discriminator.
	<b>resource-pool call treatment discriminator</b>	Creates a call discrimination profile.

# resource-pool call treatment discriminator

To modify the signal (ISDN cause code) sent to the switch when a discriminator rejects a call, enter the **resource-pool call treatment discriminator** global configuration command. To disable this function, use the **no** form of this command.

**resource-pool call treatment discriminator { busy | no-answer | channel-not-available }**

**no resource-pool call treatment discriminator { busy | no-answer | channel-not-available }**

Syntax Description	busy	Answers the call; then sends a busy signal when profile authorization or resource allocation fails.
	<b>no-answer</b>	Does not answer the call when profile authorization fails.
	<b>channel-not-available</b>	Sends channel not available (CNA) code when resource allocation fails.

**Defaults** No answer for a customer profile; CNA for a resource.

**Command Modes** Global configuration

Command History	Release	Modification
	12.1(5)T	This command was introduced.

**Usage Guidelines** The **resource-pool call treatment discriminator** global configuration command sets up the signal sent back to the telco switch in response to incoming calls.

**Examples** The following command answers the call, but sends a busy signal to the switch when profile authorization or resource allocation fails:

```
Router(config)# resource-pool call treatment discriminator busy
```

The following command prevents the call from being answered when profile authorization fails and the discriminator rejects a call:

```
Router(config)# resource-pool call treatment discriminator no-answer
```

## resource-pool profile discriminator

To create a call discrimination profile and assign it a name, use the **resource-pool profile discriminator** global configuration command. Use the **no** form of this command to remove a call discrimination profile from the running configuration.

**resource-pool profile discriminator** *name*

**no resource-pool profile discriminator** *name*

<b>Syntax Description</b>	<i>name</i>	Name of the call discrimination profile created. This name can have a maximum of 23 characters. You can add a CLID or DNIS group to the discriminator profile created. See the section, <i>Configuring Discriminator Profiles</i> , page 8.
---------------------------	-------------	---

**Defaults** No default behavior or values.

**Command Modes** Global configuration mode

<b>Command History</b>	<b>Release</b>	<b>Modification</b>
	12.0(4)XI	This command was introduced.
	12.1(5)T	This command was modified to add CLID groups as well as DNIS groups to a discriminator.

**Usage Guidelines** Discriminator profiles enable you to process calls differently, based on the call type and DNIS or CLID combination. Use the **resource-pool profile discriminator** command to create a call discrimination profile, and then use the **clid group** command to add a CLID group to a discriminator.

To create a call discrimination profile, you must specify both the call type and CLID group. Once a CLID group is associated with a call type in a discriminator, it cannot be used in any other discriminator.

**Examples** The following example shows a call discriminator named **clidDeny** that is created and configured to block digital calls from the CLID group named **clidgp1**:

```
Router(config)# resource-pool profile discriminator clidDeny
Router(config-call-d)# call-type digital
Router(config-call-d)# clid group clidgp1
```

<b>Related Commands</b>	<b>Command</b>	<b>Description</b>
	<b>clid group</b>	Configures a CLID group in a discriminator.

Command	Description
<b>dnis group</b>	Configures a DNIS group in a discriminator.
<b>show resource-pool discriminator</b>	Shows the number of times an incoming call has been rejected due to a specific CLID and call-type combination.

# show resource-pool discriminator

To see how many times an incoming call has been rejected for a specific Calling Line Identification (CLID) and call-type combination, use the **show resource-pool discriminator** command in user and privileged EXEC mode.

**show resource-pool discriminator** [*name*]

<b>Syntax Description</b>	<i>name</i>	(Optional) Specifies the name of the specific DNIS/call-type that will be rejected. The name can have a maximum of 23 characters.
---------------------------	-------------	---

**Defaults** No default behavior or values.

**Command Modes** EXEC mode.

<b>Command History</b>	<b>Release</b>	<b>Modification</b>
	12.0(4)XI	This command was introduced.
	12.1(5)T	This command was modified to include the CLID group(s) if the discriminator (s) contain CLID groups.

**Usage Guidelines** Use the **show resource-pool discriminator** EXEC command to see how many times an incoming call has been rejected due to a specific CLID and call-type combination.

If you enter the **show resource-pool discriminator** command without including a call discriminator name, a list of the current call discriminator profiles appears. If you enter a call discriminator profile name with the **show resource-pool discriminator** command, the number of calls rejected by the selected call discriminator appears.

**Examples** The following command displays the list of call discriminator profiles configured.

```
Router# show resource-pool discriminator
List of Call Discriminator Profiles:
cd1
cd2
cd3
cd4
```

The following command displays the number of calls rejected by the call discriminator **cd1** since the last clear command was used (this number is cumulative).

```
Router# show resource-pool discriminator cd1
0 calls rejected
```

---

**Related Commands**

---

**Command**

---

**Description**

---

**resource-pool call treatment discriminator** Adds call treatment code for discriminator call rejection.

---

■ show resource-pool discriminator