



# Using the Web-Based Program Guide

---

This chapter describes the web-based program guide (WBPG) and contains the following sections:

- [Overview, page 9-1](#)
- [Software Requirements, page 9-2](#)
- [Launching the WBPG, page 9-2](#)
- [Web-Based Program Guide Customization, page 9-7](#)
- [Retrieving Program Listings, page 9-12](#)
- [Playing Programs, page 9-15](#)
- [Retrieving Program Information, page 9-16](#)

## Overview

The WBPG allows IP/TV end users to review available program listings and to view programs directly from their browsers, without having to individually install the IP/TV Viewer application on their local systems. The WBPG generates dynamic HTML content based on the programs managed by one or more IP/TV Program Managers, and takes advantage of the IP/TV plug-in technology for streaming video programs.

# Software Requirements

The WBPG supports both the Netscape browser (Versions 4.5x through 4.7x) and the Internet Explorer browser (Versions 5.5 and later).

Netscape users must perform the following tasks:

- Enable JavaScript.
- Accept (at least) cookies that are sent back to the originating server.

Internet Explorer users must perform the following tasks:

- Enable Active Scripting.
- Enable the option to allow cookies to be stored on their computers.

## Launching the WBPG

You can launch the WBPG in two ways. If you have IP/TV Program Manager running on your system, you can click the Program Guide link in the IP/TV Program Manager main window to launch the WBPG. You can also access the WBPG on other IP/TV Program Managers through the browser using the URL of the Program Manager host.

When you launch the WBPG for the first time, you must enter some information to create a user profile. (See [Figure 9-1.](#))

Figure 9-1 User Profile Window

http://clovis-iptv.cisco.com/iptvguide/ - Microsoft Internet Explorer

File Edit View Favorites Tools Help

Cisco IP/TV  
Program Guide

Home Scheduled Programs OnDemand Programs Search Preferences Profile Help

User Profile

Name \*

Phone

E-Mail \*

Street Address

City

State

Country

Zip

50866

The default WBPG main window is illustrated in Figure 9-2.

Figure 9-2 Default WBPG Main Window

http://clovis-iptv.cisco.com/iptvguide/ - Microsoft Internet Explorer

File Edit View Favorites Tools Help

Cisco IP/TV  
Program Guide

Home Scheduled Programs OnDemand Programs Search Preferences Profile Help

Welcome to Cisco IPTV Program Guide!

The following functionality is designed to assist your browsing experience:

- **Home**: to go back to the home page.
- **Search**: to search for programs matching specified criteria.
- **Preferences**: to set user preferences including origin content managers.
- **Profile**: to set user profile information.
- **Help**: to launch online help.

To start, click on either [Scheduled Programs](#) or [OnDemand Programs](#) to view program listings.

1

80061

From the WBPG main window you can perform the following operations:

- Review, play, and sort scheduled programs.
- Review, play, and sort on-demand programs.
- Set user preferences.
- Search for programs matching specific criteria.
- Edit user profile information.
- Launch online help.

Each of these tasks is discussed in the sections that follow.

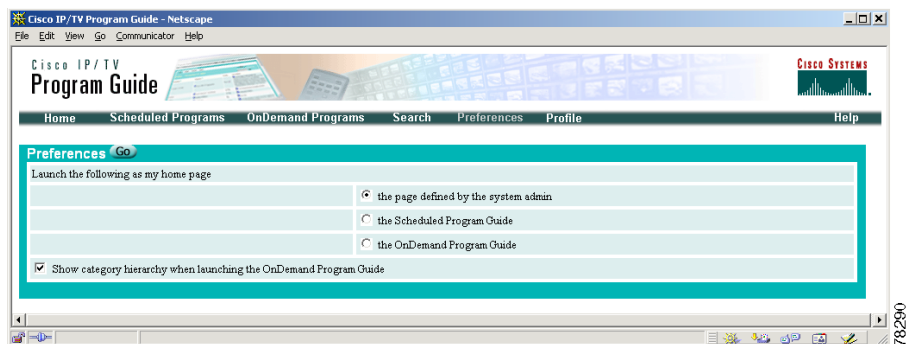
## Setting User Preferences

The Preferences window helps you to set up the window of your choice as the WBPG main window.

To set up your preferences, follow these steps:

- 
- Step 1** Click **Preferences** in the banner bar of the WBPG main window.  
The WBPG Preferences window appears. (See [Figure 9-3](#).)

**Figure 9-3** *Preferences Window*

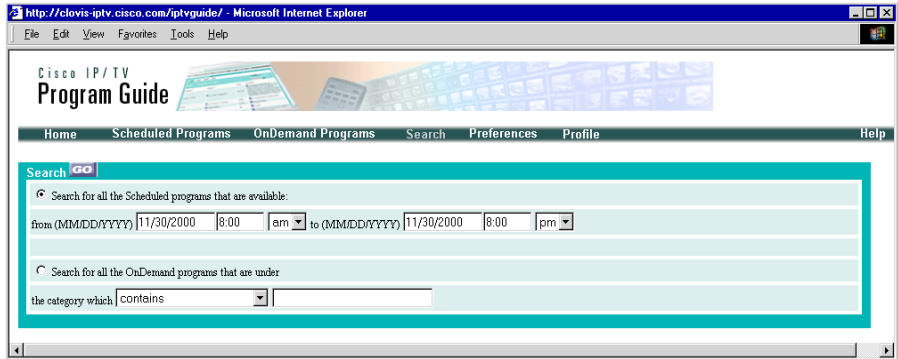


- Step 2** Choose one of the following from the **Launch the following as my home page** options:
- The page defined by the system administrator  
This option retains the default main window for the WBPB.
  - The Scheduled Program Guide  
This option sets up the Scheduled Program window as your IP/TV WBPB main window.
  - The OnDemand Program Guide  
This option sets up the OnDemand Program window as your IP/TV WBPB main window.
- Step 3** Check or uncheck the **Show category hierarchy when launching the OnDemand Program Guide** check box.
- If this check box is checked, on-demand programs are displayed in hierarchical fashion. If it is unchecked, programs are displayed in flat fashion.
- Step 4** Click the **Go** button next to Preferences to save your preferences.
- 

## Searching for Programs

Click **Search** in the banner bar of the WBPB main window to search for any programs of particular interest. You can search for scheduled programs by entering the preferred program start and end times, or on-demand programs by specifying the parent category or keywords. (See [Figure 9-4](#).)

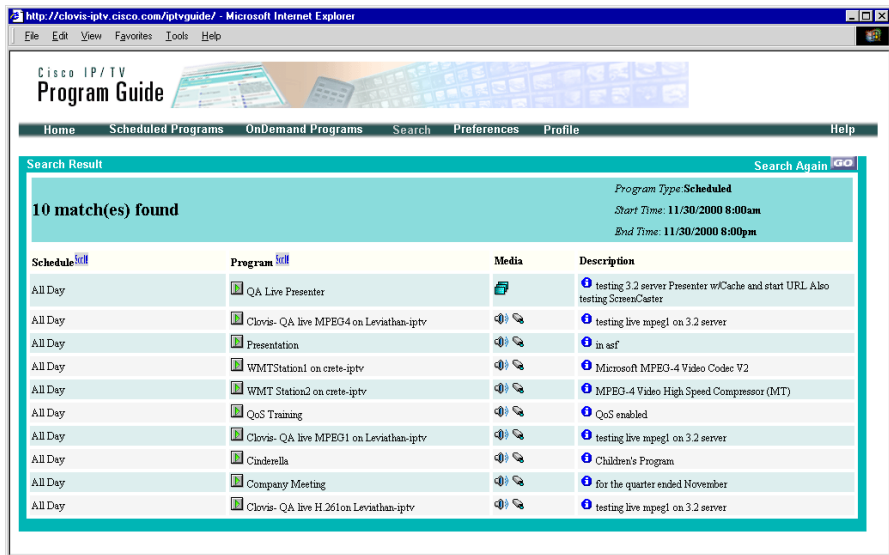
Figure 9-4 Search Criteria Window



50963

Figure 9-5 illustrates how the search results are displayed for scheduled programs.

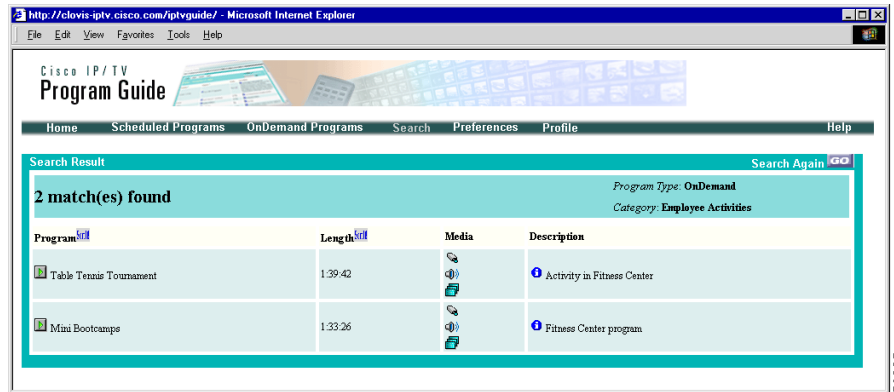
Figure 9-5 Search Result Window for Scheduled Programs



50964

Figure 9-6 illustrates how the search results are displayed for on-demand programs.

**Figure 9-6** Search Result Window for On-Demand Programs



509685

## Accessing Online Help

Click **Help** in the banner bar of the WBPB main window to access context-sensitive online help.

## Web-Based Program Guide Customization

Cisco IP/TV Release 5.2 and later releases allow you to customize the web-based program guide to suit your needs.

Properties of the web-based program guide are configured in the `iptvguide.properties` file, which is located in the `/local/local1/PMWebGuide` folder of your IP/TV Program Manager device. The images and HTML files associated with the web-based program guide are located in the `/local/local1/PMWebGuide/iptvguide` folder of IP/TV Program Manager.

You can modify the `iptvguide.properties` file and the contents of the `iptvguide` folder to customize the web-based program guide.

Table 1 lists the variables and settings that can be modified in the `iptvguide.properties` file.

**Table 1 Customizable Variables and Settings in the `Iptvguide.Properties` File**

| Parameter                           | Description   | Syntax and Default Value  |
|-------------------------------------|---|---|
| Table properties                    | Sets table properties for the web-based program guide.      | –   |
| Table border background color       | Sets the background color for the table border.             | <code>default.view.border.bgcolor=#009999</code>                  |
| Table cell background color         | Sets the background color for table cells.                  | <code>default.view.table.cell.bgcolor=#CEE6E6;#F0F0F0</code>      |
| Table section background color      | Sets the background color for a table section.              | <code>default.view.section.bgcolor=#66CCCC</code>                 |
| Table header background color       | Sets the background color for the table header.             | <code>default.view.table.header.bgcolor=#FFFFFF0</code>           |
| Table border text font color        | Sets the font color for table border.                       | <code>default.view.border.text.color=#FFFFFF</code>               |
| Table border text font face         | Sets the font type for the table border.                    | <code>default.view.border.text.face=Arial,Helvetica,Geneva</code> |
| Table border text font size         | Sets the font size for the table border.                    | <code>default.view.border.text.size=3</code>                      |
| Table section main text font color  | Sets the text font color for the main section of the table. | <code>default.view.section.main.text.color=#FFFF99</code>         |
| Table section main text font face   | Sets the text font type for the main section of the table.  | <code>default.view.section.main.text.face=Times New Roman</code>  |
| Table section main text font size   | Sets the font size for the main section of the table.       | <code>default.view.section.main.text.size=5</code>                |
| Table section minor text font color | Sets the font color for the minor text in the table.        | <code>default.view.section.minor.text.color=#FFFFFF</code>        |
| Table section minor text font face  | Sets the font type for the minor text in the table.         | <code>default.view.section.minor.text.face=Times New Roman</code> |
| Table section minor text font size  | Sets the font size for the minor text in the table.         | <code>default.view.section.minor.text.size=3</code>               |

**Table 1 Customizable Variables and Settings in the *Iptvguide.Properties* File (continued)**

| Parameter                      | Description  | Syntax and Default Value   |
|--------------------------------|--|--|
| Table header text font color   | Sets the font color for the table header.  | <code>default.view.table.header.text.color=#000000</code>  |
| Table header text font face    | Sets the font type for the table header.   | <code>default.view.table.header.text.face=Times New Roman</code>   |
| Table header text font size    | Sets the font size for the table header.   | <code>default.view.table.header.text.size=3</code>   |
| Table cell text font color     | Sets the font color for the table cell.  | <code>default.view.table.cell.text.color=#000000</code>  |
| Table cell text font face      | Sets the font type for the table cell.   | <code>default.view.table.cell.text.face=Times New Roman</code>   |
| Table cell text font size      | Sets the font size for the table cell.   | <code>default.view.table.cell.text.size=2</code>   |
| Poll rate                      | Sets the frequency (in minutes) with which the web-based program guide contacts IP/TV Program Manager for program information. | <code>server.pollRate=5</code>   |
| Local information and language | Sets the language, country, and the variant.   | <code>server.locale=en, US<sup>1</sup></code>  |
| Program Manager list           | Configures the IP/TV Program Managers from which the web-based program guide receives program listings.                        | <code>default.contentManager.list=localhost:80</code><br><br>where localhost is the default IP/TV Program Manager and 80 is the port number. You can add multiple IP/TV Program Managers separated by a semicolon. |
| Home page                      | Sets the web page of your choice as the home page of the web-based program guide.  | <code>default.view.home.url=/iptvguide/res/en/homeview.html</code>   |
| User profile settings          | Sets user profile options.   | –  |

**Table 1** Customizable Variables and Settings in the *iptvguide.Properties* File (continued)

| Parameter                    | Description   | Syntax and Default Value                                 |
|------------------------------|---|--|
| User profile enforcement     | Enforces entry of the user's username and e-mail address when the <code>default.view.home.profile</code> variable is set to True. | <code>default.view.home.profile=false</code>             |
| User profile validity period | Sets the maximum number of months for which the user profile is valid since the last update.                                      | <code>default.view.home.profile.maxAge=12</code>         |
| On-demand category           | Controls the display of the on-demand programs category hierarchy in the web-based program guide.                                 | <code>default.onDemandPrograms.showHierarchy=true</code> |

- For more information about language and country codes, refer to <http://www.ics.uci.edu/pub/ietf/http/related/iso639.txt> and [http://www.chemie.fu-berlin.de/diverse/doc/ISO\\_3166.html](http://www.chemie.fu-berlin.de/diverse/doc/ISO_3166.html). Variant codes are vendor- and browser-specific.

To customize the web-based program guide, follow these steps:

---

**Step 1** Establish an FTP connection to the IP/TV Program Manager device.

**Step 2** Go to the `/local/local1/PMWebGuide` folder.




---

**Note** The default FTP directory for IP/TV Program Manager is `/local/local1`.

---

**Step 3** Copy the `iptvguide.properties` file using the following command:

```
iptvprogrammanager# copy disk ftp {hostname | ip-address}
remotefiledir remotefilename
iptvguide.properties
```

where *hostname* or *ip-address* is the host name or IP address of the destination, *remotefiledir* is the folder on the destination device to which the local file is copied, and *remotefilename* is the filename that you want to give to the file once it has been copied to the destination server.

**Step 4** Open the `iptvguide.properties` file using a text editor.

- Step 5** Edit the necessary parameters (see [Table 1](#)) to customize the web-based program guide.
- Step 6** Save the changes you made in the `iptvguide.properties` file.
- Step 7** Upload the updated file to the original location on IP/TV Program Manager using the following command:

```
iptvprogrammanager# copy ftp disk {hostname | ip-address}  
remotefiledir remotefilename  
iptvguide.properties
```

where *hostname* or *ip-address* is the host name or IP address of the source device, *remotefiledir* is the folder on the source device from which the file was copied, and *remotefilename* is the name of the file that you just copied.

This command replaces the `iptvguide.properties` file on the IP/TV Program Manager device with the modified copy of the file.

- Step 8** Restart IP/TV Program Manager using the following commands:

```
iptvprogrammanager# iptv program-manager stop  
  
iptvprogrammanager# iptv program-manager start
```

The changes take effect after you restart IP/TV Program Manager.

---

To modify or add any images or HTML files associated with the web-based program guide, follow these steps:

- 
- Step 1** Establish an FTP connection to the IP/TV Program Manager device.
- Step 2** Go to the `/local/local1/PMWebGuide/iptvguide` folder.
- Step 3** To modify an existing file, follow these steps:
- Download the file that you want to modify.
  - Modify the file.
  - Upload the modified file to the original location.

**Note**

---

Delete the original file from the `/local/local1/PMWebGuide/iptvguide` folder before placing the updated file there.

---

- Step 4** To add a new file, follow these steps:
- Upload the new file to the /local/local1/PMWebGuide/iptvguide folder.
  - Go to the iptvguide.properties file and modify the necessary parameters that should use the new file.
  - Upload the iptvguide.properties file to the /local/local1/PMWebGuide folder.

- Step 5** Restart IP/TV Program Manager using the following commands:

```
iptvprogrammanager# iptv program-manager stop
```

```
iptvprogrammanager# iptv program-manager start
```

The changes take effect after you restart IP/TV Program Manager.

---

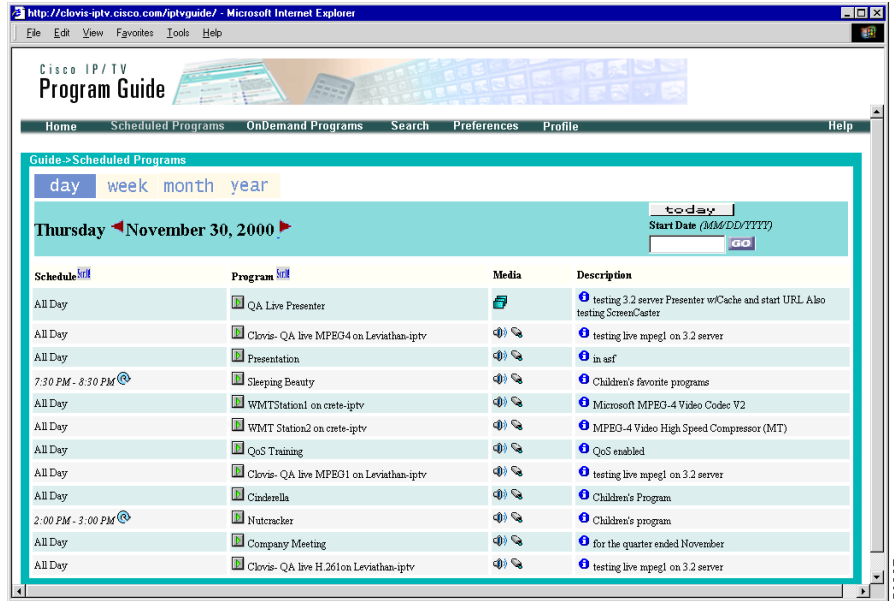
## Retrieving Program Listings

The following section describes how to retrieve program listings from the scheduled programs and on-demand programs listings. Scheduled programs can be sorted by program schedule or program name. On-demand programs can be sorted by program name or program length.

### Retrieving Scheduled Program Listings

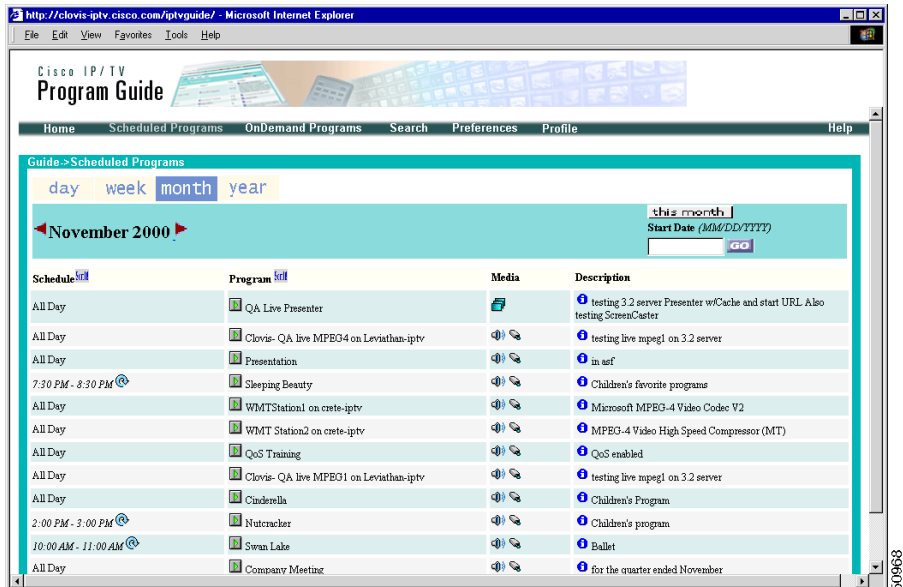
From the banner bar of the WBPG main window, choose Scheduled Programs to review the program listings for the current day. In the Scheduled Program Listing window ([Figure 9-7](#)) you can click the tabs at the top of the listing to retrieve the program listings for the current week, the current month (see [Figure 9-8](#)), and the current year, or program listings for a specific date.

**Figure 9-7** Scheduled Program Listing Window—Daily View (Sorted by Schedule)



50967

**Figure 9-8** Scheduled Program Listing Window—Monthly View (Sorted by Schedule)

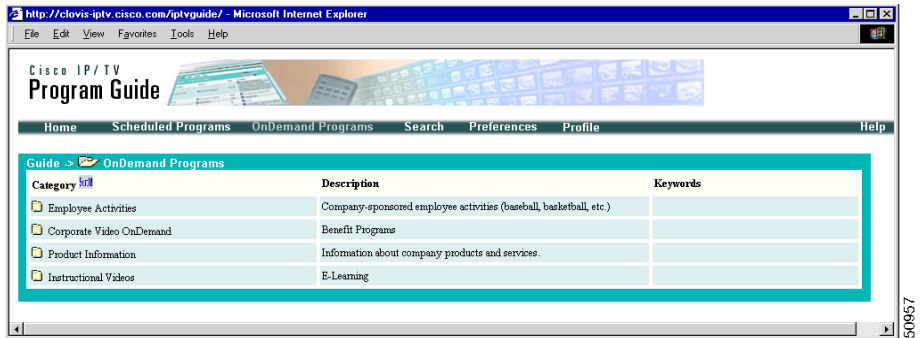


50963

## Retrieving On-Demand Program Listings

From the banner bar of the WBPB main window, choose OnDemand Programs to review on-demand program listings. You can choose to view the listing in either a category hierarchy fashion or a flat structure. [Figure 9-9](#) illustrates the top-level categories. You can click a particular category to retrieve the program under that selected category.

Figure 9-9 On-Demand Program Listing Window—Category Level



50957

## Playing Programs

You can click the Play button or the program name in the WBPG to launch a program. When you click either of these, the application launches the browser plug-in in a new window and starts playing the program. (See [Figure 9-10](#).)

Figure 9-10 Program Video Window



50959

IP/TV supports both IP/TV Viewer plug-in and the QuickTime plug-in, but IP/TV Viewer is the default choice for programs invoked from the WBPG.

Table 9-2 shows which plug-in is used in different situations.

**Table 9-2 Relationship of Plug-Ins to Programs**

| IP/TV Plug-In Installed <sup>1</sup> | QuickTime Plug-In Installed | Plug-In Used   |
|--------------------------------------|-----------------------------|--|
| X                                    | X                           | Program is played using the IP/TV plug-in.   |
| X                                    | —                           | Program is played using the IP/TV plug-in.   |
| —                                    | X                           | Program is played using the QuickTime plug-in. <sup>2</sup>  |
| —                                    | —                           | Program is not played, and you are prompted to download the QuickTime plug-in from the Apple website. <sup>2</sup> |

1. The IP/TV plug-in is used by default to play a program unless only the QuickTime plug-in is available.
2. The program administrator can enforce the use of IP/TV Viewer for any program. In such cases, IP/TV Program Manager prompts you to download the IP/TV plug-in to play the program.

## Retrieving Program Information

To review detailed program information for a selected program, click the information button in the Description field of the scheduled or on-demand program listing. The information is displayed in a separate browser window, as shown in Figure 9-11.

Figure 9-11 Program Information Page

