

Customizing the User Interface

This chapter describes the procedures for moving and hiding panes, and customizing and creating new toolbars.

IP/TV Viewer allows you to change the appearance of the main and viewer windows. You can display or hide panes and toolbars, and you can create new toolbars.

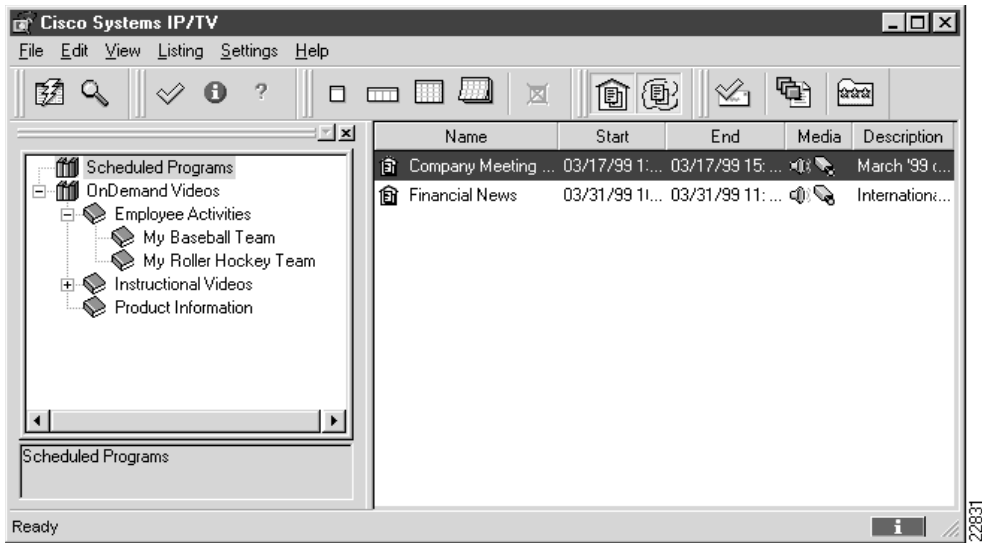
About Panes

As discussed in the “Getting Started” chapter, the IP/TV Viewer main window has two panes and various toolbars. Panes can be docked or floating.

A docked pane is attached to one edge of the IP/TV Viewer main window. When you drag a pane to the edge of the window, it snaps into place along the length of the window’s edge. You can disable the docking feature by pressing the **Ctrl** key when dragging a pane (see Figure 6-1).

About Panes

Figure 6-1 Docked Panes

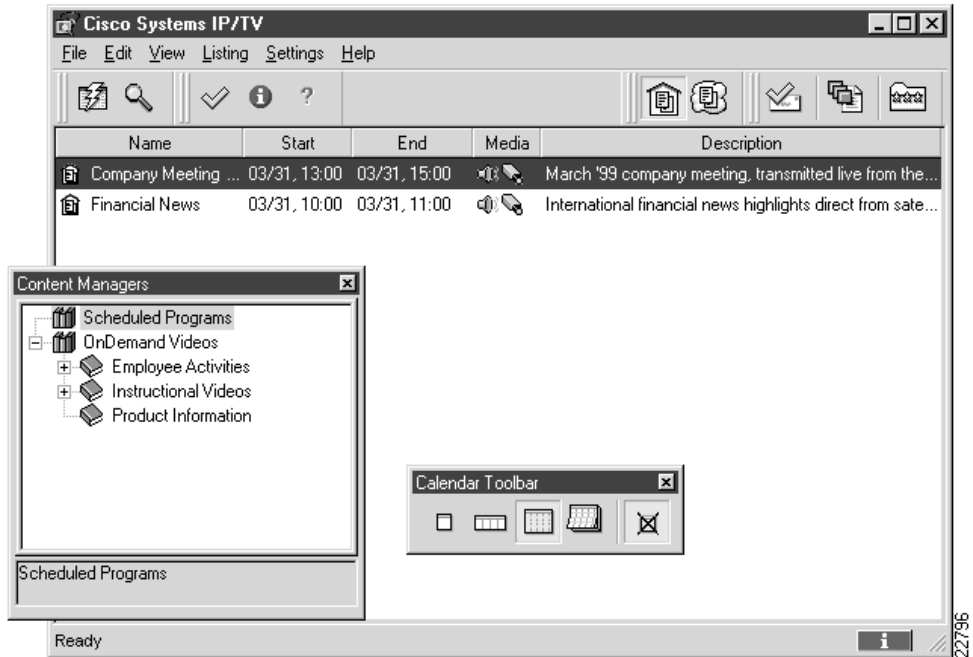


Ready

22831

A floating pane is not attached to the edge of the window. You can resize a floating pane and move it anywhere on your screen (see Figure 6-2).

Figure 6-2 Floating Panes



Moving Panes

You can move the Content Manager pane or adjust the width of the Program Listings pane by dragging the middle gripper bar to the left or right.

When moving the Content Manager pane, turn on the **Allow Docking** command when you want to dock this pane and turn off the **Allow Docking** command when you want to float this pane.

About Toolbars

To access the **Allow Docking** command, place your cursor on the Content Manager or Program Listings pane gripper bar and click the right mouse button. A popup menu appears with the commands **Allow Docking** and **Hide**.

Note Another way to prevent docking when the **Allow Docking** command is checked is to hold the **Ctrl** key down while dragging panes or toolbars.

Displaying or Hiding Panes

To display the Content Managers on the IP/TV Viewer main window, click **View>Content Managers**. To hide this pane, uncheck this selection. Or, check the **Hide** command in the popup menu.

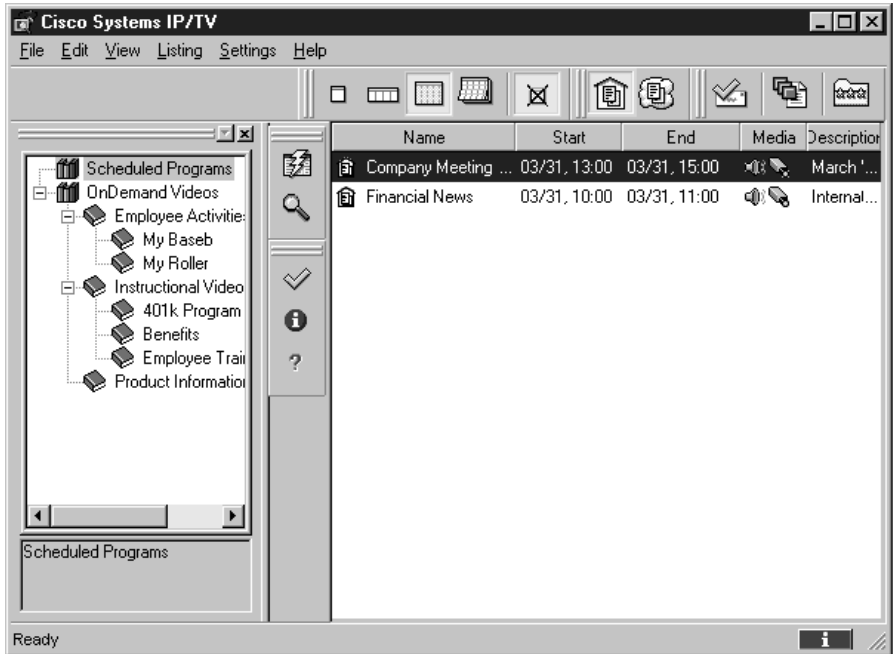
About Toolbars

Toolbars allow you to access and organize IP/TV Viewer commands quickly and easily. You can customize built-in toolbars or create new toolbars. You can add and remove buttons, hide or display toolbars, and move toolbars. Toolbars can be docked or floating.

A docked toolbar is attached to one edge of the IP/TV main window or viewer window. You can dock a toolbar below the window's title bar or to the left, right, or bottom edge of the main window. When you drag a toolbar to the edge of the window, the toolbar snaps into place along the length of the window's edge.

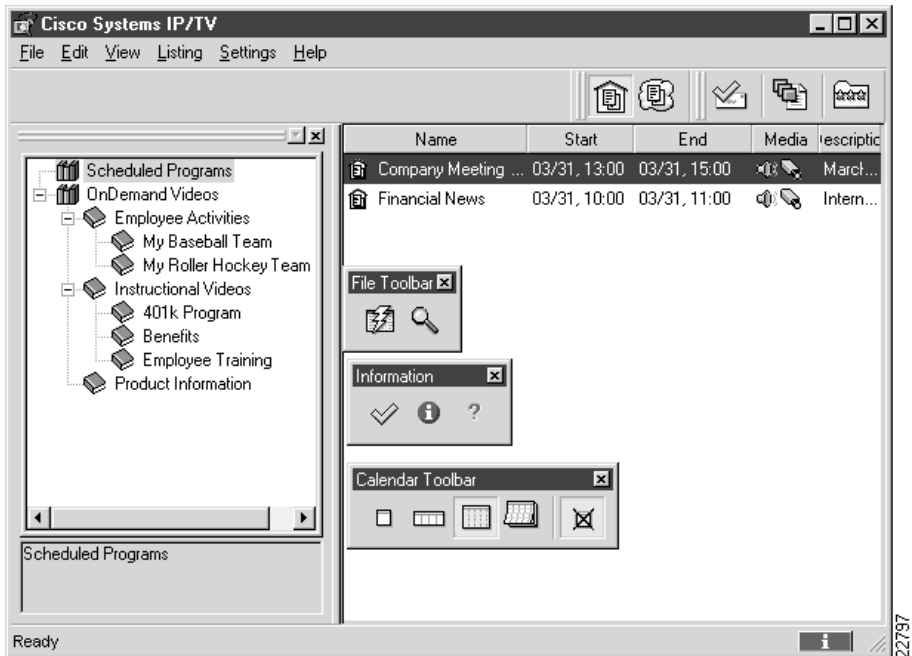
You can change the location of toolbars as desired. For example, in Figure 6-3 the toolbars are docked, but not in their default positions.

Figure 6-3 Docked Toolbars



A floating toolbar is not attached to the edge of the window. You can resize a floating toolbar and move it anywhere on your screen (see Figure 6-4).

Figure 6-4 Floating Toolbars



Built-In Toolbars

IP/TV Viewer comes with several built-in toolbars. You can add and remove command buttons to built-in toolbars, but you cannot delete them. You can, however, delete toolbars that you create.

Both the IP/TV Viewer main window and viewer windows have the following built-in toolbars:

- IP/TV main window: File Toolbar, Information, Calendar Toolbar, Filters Toolbar, and Personal Selections Toolbar.
- Scheduled and OnDemand viewer windows: Program Surf, Video Toolbar, and VCR Controls (on-demand only).

Displaying and Hiding Toolbars

To display or a hide a toolbar:

- Step 1** From the IP/TV Viewer main window or viewer window, click **Edit>Customize Toolbars**. The Customize window dialog box appears with the **Toolbars** tab on top.
- Step 2** To display a toolbar, click the toolbar name check box you want to display. To hide a toolbar, click the toolbar name check box to clear it. To show a toolbar's tool tips, check it.

Moving Toolbars

You can move both a docked or floating toolbar within the IP/TV main or viewer windows.

To move a toolbar:

- Step 1** Click the move handle on a docked toolbar, or click the title on a floating toolbar.
- Step 2** Drag the toolbar to a new location. If you drag the toolbar to the edge of the IP/TV main window or viewer window, it docks to the edge of the window.

Creating a Custom Toolbar

To create your own custom toolbar:

- Step 1** On the Customize dialog box, select the **Toolbars** tab.
- Step 2** Click **New**. The New Toolbar dialog box appears.
- Step 3** Enter the name of the new toolbar in the Toolbar Name field and click **OK**.

The toolbar name now appears in the list on the **Toolbars** tab. The new toolbar also appears as a floating toolbar on the program listing or viewer window.

Deleting a Custom Toolbar

To delete a toolbar you created:

- Step 1** On the Customize dialog box, select the **Toolbars** tab.
- Step 2** Highlight the name of the toolbar you want to delete and click **Delete**.

Note You cannot delete built-in toolbars. When you select a built-in toolbar, the Reset button appears. Click **Reset** to restore the default buttons to a built-in toolbar.

Adding and Removing Buttons on Toolbars

To add buttons to a built-in toolbar or a toolbar you created, do the following:

- Step 1** Make sure the toolbar is visible on the program listing or viewer window.
- Step 2** On the Customizing dialog box, select the **Commands** tab. On the Categories pane, click a category to display the available command buttons.
- Step 3** Drag the command button you want from the Buttons pane to the desired toolbar.
- Step 4** When you have added all the buttons you want, click **OK**.

To remove buttons from a toolbar, do the following:

- Step 1** Open the Customize dialog box.
- Step 2** Click the button on the toolbar you want to remove and drag it off the toolbar.