



Activating GSS Devices from the GUI

This chapter describes how to log on to the primary GSSM and active your GSSM and GSS devices from the primary GSSM GUI as the first step in configuring request routing and global server load balancing on your GSS network.

This chapter contains the following major sections:

- [Logging In to the Primary GSSM Graphical User Interface](#)
- [Activating GSS Devices from the Primary GSSM](#)
- [Where to Go Next](#)

Logging In to the Primary GSSM Graphical User Interface

After you configure and enable your primary GSSM, you may access the graphical user interface (GUI). The primary GSSM uses HTTP over SSL (HTTPS) to communicate with web clients.

When you first log in to the primary GSSM GUI, use the system default administrative account and password. After you access the primary GSSM GUI, create and maintain additional user accounts and passwords using the user administration features of the primary GSSM. See the *Cisco Global Site Selector Administration Guide* for information on creating user accounts.

To log in to the primary GSSM GUI, perform the following steps:

1. Open your preferred Internet web browser application, such as Internet Explorer or Netscape Navigator.
2. Enter the secure HTTP address of your GSSM in the address field. For example, if your primary GSSM is named `gssm1.example.com`, enter the following to display the primary GSSM login dialog box and to access the GUI:

```
https://gssm1.example.com
```

If you have trouble locating the primary GSSM DNS name, keep in mind that the GSS network uses secure connections. The address of the GSSM includes `https://` (HTTP over SSL) instead of the more common `http://`.

3. Click **Yes** at the prompt to accept (trust) and install the signed certificate from Cisco Systems.

To avoid approving the signed certificate every time you log in to the primary GSSM, accept the certificate from Cisco Systems, Inc. For instructions on trusting certificates from a particular owner or website, see the online help included with your browser.

4. To install the signed certificate, if you are using one of the following:
 - Internet Explorer—In the Security Alert dialog box, click **View Certificate**, choose the **Install Certificate** option, and follow the prompts of the Certificate Manager Import Wizard. Proceed to Step 5.
 - Netscape—In the New Site Certificate dialog box, click **Next** and follow the prompts of the New Site Certificate Wizard. Proceed to Step 5.
5. At the primary GSSM login window, enter your username and password in the fields provided, and then click **Login** (see [Figure 5-1](#)). If this is your first time logging on to the GSSM, use the default account name (admin) and password (default) to access the GUI.

The Primary GSSM Welcome page (see [Figure 5-2](#)) appears. See the *Cisco Global Site Selector GUI-based Global Server Load-Balancing Configuration Guide* for information on navigating through the primary GSSM GUI.

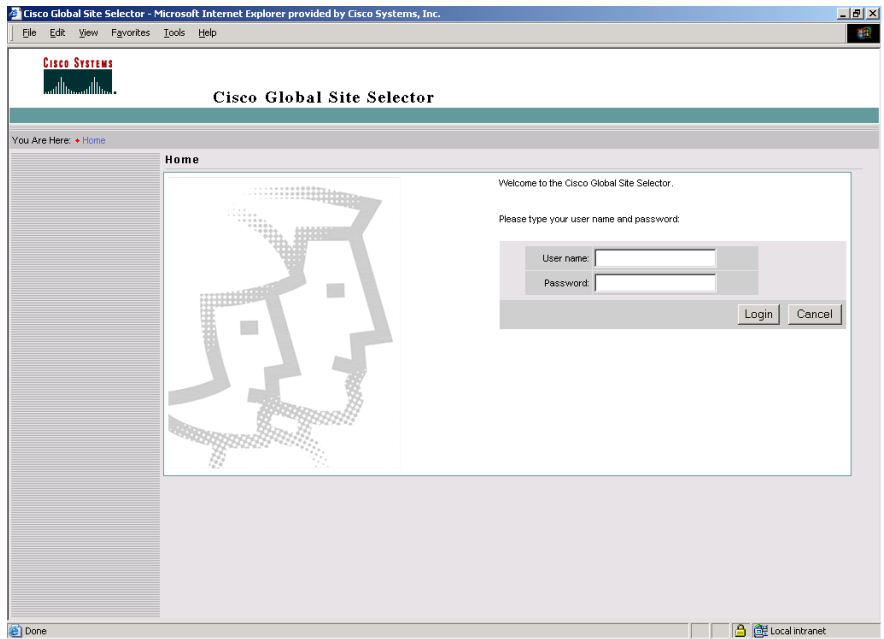
Figure 5-1 Primary GSSM GUI Login Window

Figure 5-2 Primary GSSM Welcome Window



To log out of a primary GSSM GUI session, click **Logout** at the upper right of the window. The browser confirms that you want to log out of the primary GSSM GUI session. Click **OK** to confirm the logout (or **Cancel**). When you click **OK**, the primary GSSM logs you out of the session and redisplay the Primary GSSM GUI Login window (see Figure 5-1).

Activating GSS Devices from the Primary GSSM

After you configure your GSS devices to function as a standby GSSM or as a GSS, activate those devices from the primary GSSM GUI to add those devices to your GSS network. The standby GSSM and GSS devices are synchronized with the primary GSSM.

To activate a GSS or a standby GSSM from the primary GSSM GUI, perform the following steps:

1. Click the **Resources** tab.

2. Click the **Global Site Selectors** navigation link. The Global Site Selectors list page appears (see [Figure 5-3](#)). All active GSS devices appear with an “Online” status. The GSS devices requiring activation appear with an “Inactive” status.

Figure 5-3 Global Site Selectors List Page—Inactive Status

The screenshot shows the Cisco Global Site Selector web interface in Microsoft Internet Explorer. The page title is "Cisco Global Site Selector" and the user is logged in as "admin". The navigation menu includes "Global Site Selectors", "DNS Rules", "Resources", "Monitoring", "Tools", and "Traffic Mgmt". The "Global Site Selectors" page displays a table with the following data:

Global Site Selector	Status	Node Services	IP Address	Location	Region
gss.cisco.com	Inactive	GSS	10.86.209.210		
gssm_primary.cisco.com	Online	GSS; Primary GSSM	10.86.209.193		

The table shows 2 records. The "Rows per page" is set to 20. The "gss.cisco.com" device is marked as "Inactive", while "gssm_primary.cisco.com" is marked as "Online".

3. Click the **Modify GSS** icon for the first GSS device to activate. The Modifying GSS details page appears (see [Figure 5-4](#)).

Figure 5-4 Modifying GSS Details Page

The screenshot shows the Cisco Global Site Selector web interface in Microsoft Internet Explorer. The page title is "Modifying GSS: gss.cisco.com". The interface includes a navigation menu with options like "DNS Rules", "Resources", "Monitoring", "Tools", and "Traffic Mgmt". The main content area is divided into four panels:

- General Configuration:** Name: gss.cisco.com; Activate:
- Locality:** Location: Unspecified; Region: N/A
- Node Information:** Status: Inactive; Version: 1.0.901.0.13; Node Services: GSS
- Network Information:** IP Address: 10.86.209.210; Hostname: gss-extreme.cisco.com; MAC: 00:02:55:b7:73:1f

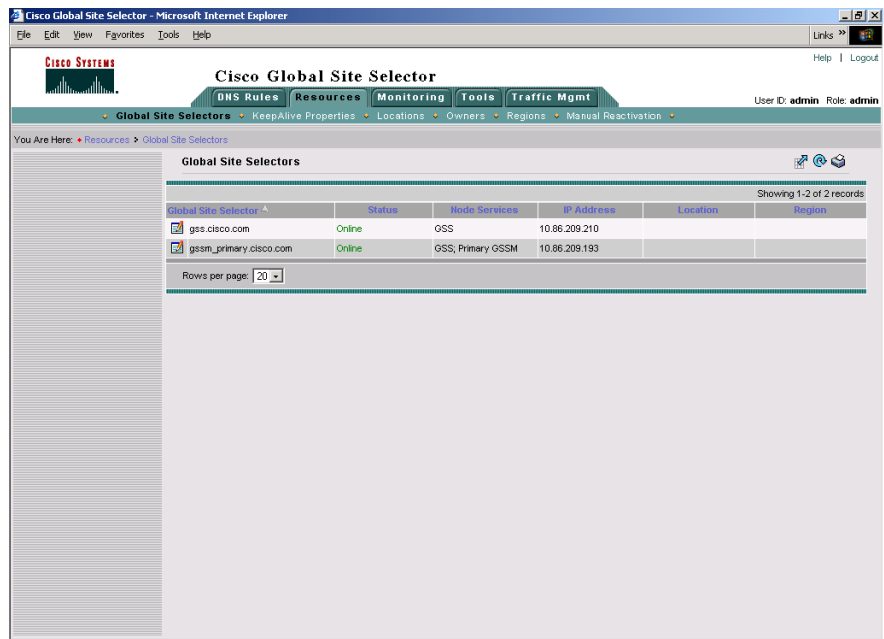
At the bottom right, there are "Submit" and "Cancel" buttons. A vertical ID number "243026" is visible on the right edge of the screenshot.

4. Check the **Activate** check box. This check box does not appear in the Modifying GSS details page until after a GSS device has been activated.
5. Click the **Submit** button, which returns you to the Global Site Selectors list page (see [Figure 5-5](#)). The status of the active GSS device is “Online.” If the device is functioning properly and network connectivity is good between the device and the primary GSSM, the status of the device changes to “Online” within approximately 30 seconds.

**Note**

The device status remains “Inactive” if the device is not functioning properly or there are problems with network connectivity. If this situation occurs, cycle power to the GSS device, check your network connections, then repeat this procedure. If you still cannot activate the GSS device, contact Cisco TAC.

Figure 5-5 Global Site Selectors List Page—Active Status



- Repeat Steps 1 through 5 for the standby GSSM and each inactive GSS device.

Where to Go Next

After you create your GSSM (primary and standby) and GSS devices and configure them to connect to your network, you can begin configuring request routing and global server load balancing on your GSS network. To configure your GSS devices and resources from the primary GSSM for global server load-balancing, proceed to [Chapter 7, Global Server Load Balancing Summary](#).

■ Where to Go Next