

# 目录

[简介](#)

[先决条件](#)

[要求](#)

[使用的组件](#)

[相关产品](#)

[规则](#)

[配置网关](#)

[网络图](#)

[配置](#)

[验证网关配置](#)

[排除故障网关配置](#)

[配置 Cisco CallManager](#)

[配置步骤](#)

[验证Cisco CallManager注册状态](#)

[排除故障Cisco CallManager](#)

[验证](#)

[呼出的Debug输出从IP电话到PSTN](#)

[针对同一呼叫调试来自网关的 MGCP 数据包](#)

[呼入呼叫的Debug输出从PSTN](#)

[调试来自网关的 MGCP 信息包](#)

[故障排除](#)

[导致i = 0x82B2 -请求的功能](#)

[原因我= 0x80E5 -消息与呼叫状态兼容](#)

[相关信息](#)

## 简介

当您使用Cisco IOS软件版本12.4(5b)时，本文解释如何配置与PRI的介质网关控制协议(MGCP)。本文也展示注册过程、成功的呼入和呼出电话从PSTN，以及调试和Cisco CallManager跟踪呼叫的。

## 症状

当您配置Cisco CallManager用Cisco IOS MGCP网关用PRI端口时，您能潜在遇到这些症状：

- MGCP网关不向Cisco CallManager登记。参考[MGCP网关注册失败用Cisco CallManager](#)欲知更多信息。
- MGCP PRI端口不向Cisco CallManager登记。保证PRI端口连接到有第1层和第2层的电信公司线路在有效状态。

## 先决条件

## 要求

尝试进行此配置之前，请确保满足以下要求：

- 运行Cisco IOS软件版本12.4(5b)以Cisco IOS网关用数字PRI和Cisco CallManager 4.1。

**注意：**当 PRI 和 MGCP 配合使用时，Cisco CallManager 不支持该配置或无法使用 Fractional PRI。如果部分PRI是必要的您能使用H.323而不是MGCP。

## 使用的组件

本文档中的信息基于以下软件和硬件版本：

- Cisco 2620路由器
- NM-4VWIC-MBRD
- Cisco IOS软件Release12.4(5b)和Cisco IOS软件版本12.4(fc2)
- Cisco CallManager版本4.1

本文档中的信息都是基于特定实验室环境中的设备编写的。本文档中使用的所有设备最初均采用原始（默认）配置。如果您使用的是真实网络，请确保您已经了解所有命令的潜在影响。

## 相关产品

此设置能也使用这些Cisco IOS网关中的任一：VG200，2600，3600，运行同一个Cisco IOS软件版本。Cisco CallManager版本3.1或以后支持此配置。

## 规则

有关文档规则的详细信息，请参阅 [Cisco 技术提示规则](#)。

## 配置网关

在此部分，您提交以信息配置网关。

**注意：**有关本文档所用命令的详细信息，请使用[命令查找工具](#)（[仅限注册用户](#)）。

## 网络图

本部分使用以下网络设置：



## 配置

本文档使用以下配置：

• AV-2620-4

AV-2620-4

```
AV-2620-4#show run
version 12.4
no parser cache
no service single-slot-reload-enable
service timestamps debug
service timestamps log datetime msec
service password-encryption
hostname AV-2620-4
logging rate-limit console 10
except errors
enable secret 5
xxxx
enable password 7xxxx
voice-card 1
!ip subnet-zero
!no ip domain-lookup
!no ip dhcp-client network-discovery
mgcp
mgcp call-agent 172.16.240.124 2427
service-type mgcp version 0.1
ccm-manager mgcp
!--- These three commands are necessary to enable Cisco CallManager
!--- to control the gateway. This enables the trombone feature, which
!--- is the feature that lets Cisco CallManager control the gateway.
mgcp dtmf-relay voip codec all mode out-of-band
mgcp rtp unreachable timeout 1000 action notify
mgcp modem passthrough voip mode cisco
mgcp sdp simple
mgcp package-capability rtp-package
mgcp package-capability sst-package
no mgcp timer receive-rtcp
no mgcp explicit hookstate
isdn switch-type primary-ni
call rsvp-sync
!
ccm-manager music-on-hold
ccm-manager config server 172.16.240.124
ccm-manager config
!
controller T1 1/0 framing esf clock source internal
linecode b8zs cablelength short 133 pri-group timeslots 1-24
service mgcp
!
interface FastEthernet0/0
ip address 172.16.15.129 255.255.255.0
ip helper-address 172.16.15.10
no ip mroute-cache
duplex auto speed auto
!
interface Serial0/2/0:23
no ip address
no logging
event link-status isdn
switch-type primary-ni
isdn incoming-voice voice
isdn T310 10000
isdn bind-13
ccm-manager no cdp enable
!
no ip http server
!
snmp-server community public RO
snmp-server community private RW
snmp-server packet-size 4096
voice-port 0/2/0:23
dial-peer cor custom
!
dial-peer voice 9991
023 pots application mgcp
app port 0/2/0:23
!--- application mgcp
app or
!--- service MGCP
PAPP
!--- is not required if isdn bind-13
ccm-manager
!--- is applied to the serial interface of the T1/E1
!--- that corresponds to the voice-port mentioned in pots dial-peer.
!
line con 0
exec-timeout 0 0
line aux 0
line vty 0 4
exec-timeout 0 0
password 7 xxxx
login
line vty 5 15
login
!end
```

**注意：** 使用MGCP，您不能根据呼叫方目录号码(DN)阻塞呼入呼叫。然而，如果使用H323，您能如此执行。

**注意：** 在您在MGCP网关后做所有配置更改，请依顺序发出这两global命令在MGCP网关使更改生效。

```
AV-2620-4#show run
version 12.4
no parser cache
no service single-slot-reload-enable
service timestamps debug
service timestamps log datetime msec
service password-encryption
hostname AV-2620-4
logging rate-limit console 10
except errors
enable secret 5
xxxx
enable password 7xxxx
voice-card 1
!ip subnet-zero
!no ip domain-lookup
!no ip dhcp-client network-discovery
mgcp
mgcp call-agent 172.16.240.124 2427
service-type mgcp version 0.1
ccm-manager mgcp
!--- These three commands are necessary to enable Cisco CallManager
!--- to control the gateway. This enables the trombone feature, which
!--- is the feature that lets Cisco CallManager control the gateway.
mgcp dtmf-relay voip codec all mode out-of-band
mgcp rtp unreachable timeout 1000 action notify
mgcp modem passthrough voip mode cisco
mgcp sdp simple
mgcp package-capability rtp-package
mgcp package-capability sst-package
no mgcp timer receive-rtcp
no mgcp explicit hookstate
isdn switch-type primary-ni
call rsvp-sync
!
ccm-manager music-on-hold
ccm-manager config server 172.16.240.124
ccm-manager config
!
controller T1 1/0 framing esf clock source internal
linecode b8zs cablelength short 133 pri-group timeslots 1-24
service
```

```

mgcp!!interface FastEthernet0/0 ip address 172.16.15.129 255.255.255.0 ip helper-address
172.16.15.10 no ip mroute-cache duplex auto speed auto !interface Serial0/2/0:23 no ip address
no logging event link-status isdn switch-type primary-ni isdn incoming-voice voice isdn T310
10000 isdn bind-13 ccm-manager no cdp enable!no ip http server!snmp-server community public
ROsnmp-server community private RWSnmp-server packetsize 4096!voice-port 0/2/0:23!dial-peer cor
custom!!dial-peer voice 9991023 pots application mgcpapp port 0/2/0:23!--- application mgcpapp
or !--- service MGCPAPP !--- is not required if isdn bind-13 ccm-manager !--- is applied on the
serial interface of the T1/E1 !--- that corresponds to the voice-port mentioned in pots dial-
peer.!!line con 0 exec-timeout 0 0line aux 0line vty 0 4 exec-timeout 0 0 password 7 xxxx
loginline vty 5 15 login!!endAV-2620-4#show runversion 12.4no parser cacheno service single-
slot-reload-enableservice timestamps debug datetime msecservice timestamps log datetime
msecservice password-encryption!hostname AV-2620-4!logging rate-limit console 10 except
errorsenable secret 5 xxxenable password 7xxxx!voice-card 1!ip subnet-zero!!no ip domain-
lookup!no ip dhcp-client network-discoverymgcpmgcp call-agent 172.16.240.124 2427 service-type
mgcp version 0.1ccm-manager mgcp!--- These three commands are necessary to enable Cisco
CallManager !--- to control the gateway. This enables the trombone feature, which !--- is the
feature that lets Cisco CallManager control the gateway. mgcp dtmf-relay voip codec all mode
out-of-bandmgcp rtp unreachable timeout 1000 action notifymgcp modem passthrough voip mode
ciscomgcp sdp simplemgcp package-capability rtp-packagemgcp package-capability sst-packageno
mgcp timer receive-rtcpno mgcp explicit hookstateisdn switch-type primary-nicall rsvp-sync!
!ccm-manager music-on-holdccm-manager config server 172.16.240.124ccm-manager config!!controller
T1 1/0 framing esf clock source internal linecode b8zs cablelength short 133 pri-group timeslots
1-24 service mgcp!!interface FastEthernet0/0 ip address 172.16.15.129 255.255.255.0 ip helper-
address 172.16.15.10 no ip mroute-cache duplex auto speed auto !interface Serial0/2/0:23 no ip
address no logging event link-status isdn switch-type primary-ni isdn incoming-voice voice isdn
T310 10000 isdn bind-13 ccm-manager no cdp enable!no ip http server!snmp-server community public
ROsnmp-server community private RWSnmp-server packetsize 4096!voice-port 0/2/0:23!dial-peer cor
custom!!dial-peer voice 9991023 pots application mgcpapp port 0/2/0:23!--- application mgcpapp
or !--- service MGCPAPP !--- is not required if isdn bind-13 ccm-manager !--- is applied on the
serial interface of the T1/E1 !--- that corresponds to the voice-port mentioned in pots dial-
peer.!!line con 0 exec-timeout 0 0line aux 0line vty 0 4 exec-timeout 0 0 password 7 xxxx
loginline vty 5 15 login!!end

```

这些MGCP in命令一个相似的顺序用于重置在IOS网关的MGCP。如果其中任一个MGCP接口发生故障，通过发出一关闭和no shutdown命令重置接口在各自的接口配置模式。然后以相似的方式请重置MGCP在网关为了解决问题。

## 验证网关配置

使用本部分可确认配置能否正常运行。

[命令输出解释程序 \( 仅限注册用户 \)](#) (OIT) 支持某些 show 命令。使用 OIT 可查看对 show 命令输出的分析。

- [show ccm-manager](#) ? 显示注册状态用Cisco CallManager。
- [show mgcp endpoint](#) ? 显示端口状态。

这些命令输出显示此处：

```

AV-2620-4#show ccm-managerMGCP Domain Name: AV-2620-4Priority      Status
Host=====Primary      Registered
172.16.240.124First Backup   None Second Backup   None Current active Call Manager:
172.16.240.124 Backhaul/Redundant link port: 2428 Failover Interval:      30 seconds Keepalive
Interval:      15 seconds Last keepalive sent:      00:45:31 (elapsed time: 00:00:04) Last MGCP
traffic time:      00:45:31 (elapsed time: 00:00:04) Last failover time:      None Switchback
mode:      Graceful MGCP fallback mode:      Not Selected Last MGCP fallback start
time: 00:00:00 Last MGCP fallback end time: 00:00:00 PRI Backhaul Link info:      Link
Protocol:      TCP      Remote Port Number: 2428      Remote IP Address: 172.16.240.124      Current
Link State: OPEN      Statistics:      Packets recvd:      32      Recv failures:      0
Packets xmitted: 32      Xmit failures: 0      PRI Ports being backhauled:      Slot
1, port 0 Configuration Auto-Download Information ===== No

```

```

configurations downloaded Current state: Automatic Configuration Download feature is disabled
Configuration Error History: FAX mode: ciscoAV-2620-4#show mgcp endpoint Interface T1 0/2/0
ENDPOINT-NAME V-PORT SIG-TYPE ADMIN S0/SU2/ds1-0/1@AV-2620-4 0/2/0:23 none
up S0/SU2/ds1-0/2@AV-2620-4 0/2/0:23 none up S0/SU2/ds1-0/3@AV-2620-4 0/2/0:23
none up S0/SU2/ds1-0/4@AV-2620-4 0/2/0:23 none up S0/SU2/ds1-0/5@AV-2620-4
0/2/0:23 none up S0/SU2/ds1-0/6@AV-2620-4 0/2/0:23 none up S0/SU2/ds1-
0/7@AV-2620-4 0/2/0:23 none up S0/SU2/ds1-0/8@AV-2620-4 0/2/0:23 none up
S0/SU2/ds1-0/9@AV-2620-4 0/2/0:23 none up S0/SU2/ds1-0/10@AV-2620-4 0/2/0:23
none up S0/SU2/ds1-0/11@AV-2620-4 0/2/0:23 none up S0/SU2/ds1-0/12@AV-2620-4
0/2/0:23 none up S0/SU2/ds1-0/13@AV-2620-4 0/2/0:23 none up S0/SU2/ds1-
0/14@AV-2620-4 0/2/0:23 none up S0/SU2/ds1-0/15@AV-2620-4 0/2/0:23 none up
S0/SU2/ds1-0/16@AV-2620-4 0/2/0:23 none up S0/SU2/ds1-0/17@AV-2620-4 0/2/0:23
none up S0/SU2/ds1-0/18@AV-2620-4 0/2/0:23 none up S0/SU2/ds1-0/19@AV-2620-4
0/2/0:23 none up S0/SU2/ds1-0/20@AV-2620-4 0/2/0:23 none up S0/SU2/ds1-
0/21@AV-2620-4 0/2/0:23 none up S0/SU2/ds1-0/22@AV-2620-4 0/2/0:23 none up
S0/SU2/ds1-0/23@AV-2620-4 0/2/0:23 none up

```

## 排除故障网关配置

使用本部分可排除配置故障。

**注意：** 使用 `debug` 命令之前，请参阅[有关 Debug 命令的重要信息](#)。

- [MGCP信息包](#)？使您验证网关是否与Cisco CallManager联络。

此命令输出显示此处：

```

AV-2620-4#debug mgcp packetMedia Gateway Control Protocol packets debugging is onAV-2620-
4#terminal monitorAV-2620-4#*Jan 23 05:19:39.703: MGCP Packet sent to 172.16.240.124:2427---
>NTFY 221919402 *@MGCP MGCP 0.1X: 00:<--- *Jan 23 05:19:39.771: MGCP Packet received from
172.16.240.124:2427--->200 221919402<---*Jan 23 05:19:54.703: MGCP Packet sent to
172.16.240.124:2427--->NTFY 221919403 *@MGCP MGCP 0.1X: 00:<---*Jan 23 05:19:54.771: MGCP Packet
received from 172.16.240.124:2427--->200 221919403<---*Jan 23 05:20:09.703: MGCP Packet sent to
172.16.240.124:2427--->NTFY 221919404 *@MGCP MGCP 0.1X: 00:<---*Jan 23 05:20:09.771: MGCP Packet
received from 172.16.240.124:2427--->200 221919404

```

## 配置 Cisco CallManager

此部分描述步骤配置Cisco CallManager，并且提供验证信息和提示排除故障。

### 配置步骤

完成这些步骤配置在Cisco CallManager的网关：

1. 选择在Cisco CallManager管理页的Device > Gateway。



2. 点击Add a New Gateway。 —
3. 选择网关类型的设备协议的和MGCP 并且其次单击。

4. 进入路由器的主机名，域名，选择Cisco CallManager组，选择在适当的slot的已安装语音接口卡并且点击插入键。

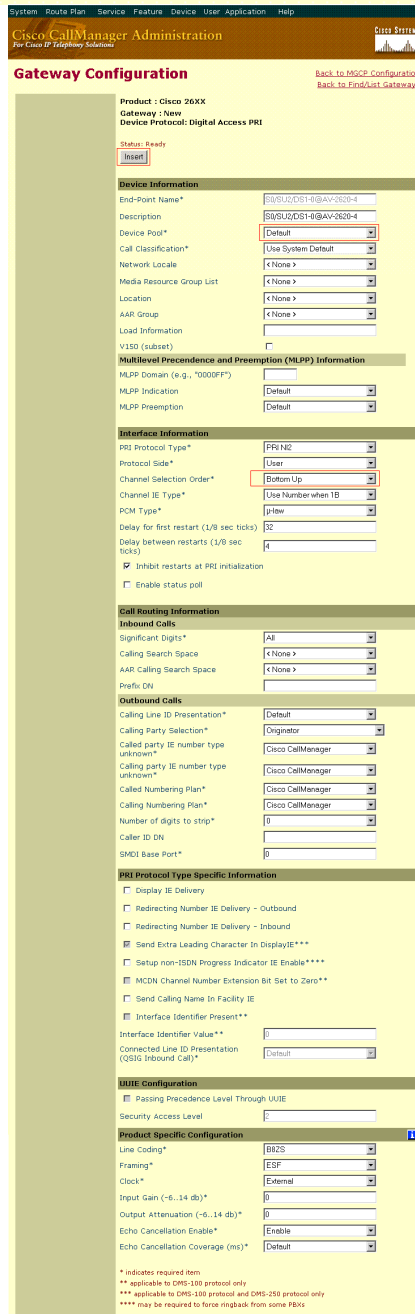
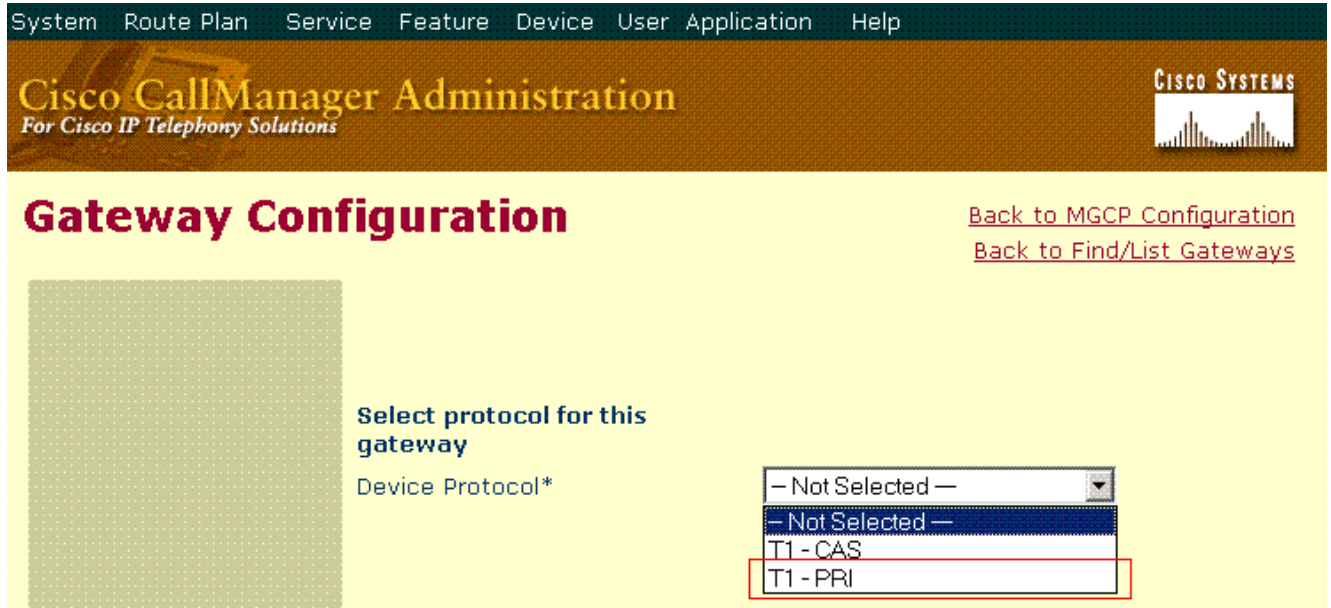
5. 选择亚单位的T1卡在已安装语音接口卡slot下并且点击更新。对话框看来提示您重置网关。点

击OK键然后单击“Reset”。现在，请点击Close为了关上窗口。



6. 点击端点标识符(在本例中, 0/2/0)。

7. 选择选项T1-PRI。



8. 选择适当的设备池并且点击插入键。

注意：信道选择顺序指定

端口从首先启用的命令(最低的编号端口)持续(较高的值端口)，或者从为时到首先。有效条目是TOP\_DOWN (对首先的为时)或BOTTOM\_UP (首先持续)。如果端口号使用，选择TOP\_DOWN的不是肯定的。

9. 使更改生效，点击**重置网关**然后单击**更新**。

**Gateway Configuration**

[Back to MGCP Configuration](#)  
[Back to Find/List Gateways](#)  
[Dependency Records](#)

Product : Cisco 26XX  
Gateway : S0/SU2/DS1-0@MGCP  
Device Protocol: Digital Access PRI  
Registration: Registered with Cisco CallManager 172.16.240.124  
IP Address: 172.16.15.124

Status: Update completed.

Update Delete Reset Gateway

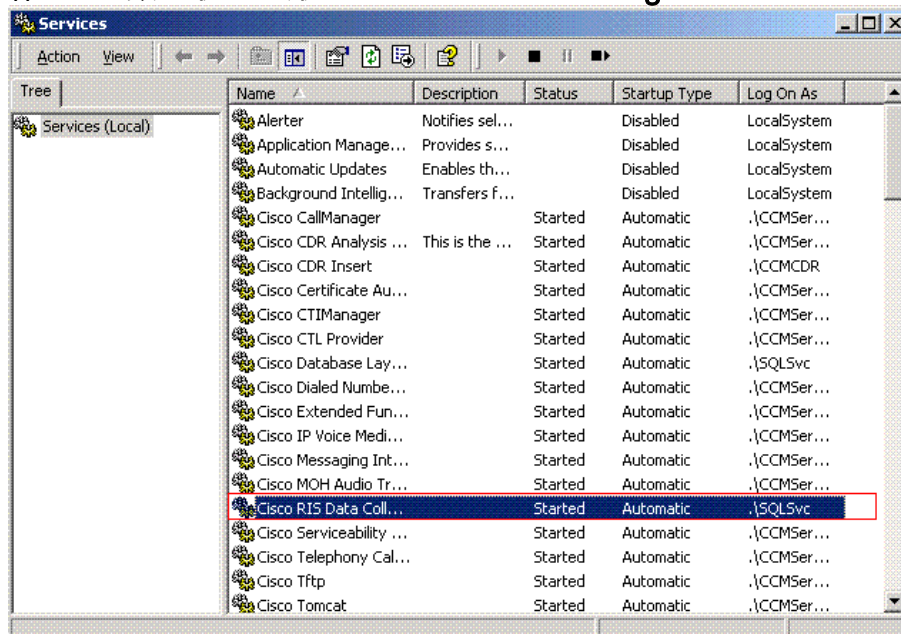
**Device Information**

End-Point Name*	S0/SU2/DS1-0@MGCP
Description	S0/SU2/DS1-0@MGCP
Device Pool*	Default
Call Classification*	Use System Default
Network Locale	< None >
Media Resource Group List	< None >
Location	< None >

## 验证Cisco CallManager注册状态

完成这些步骤：

1. 检查状态监控器发现MGCP PRI网关是否注册。去Start > Programs > Administrative Tools > Performance。
2. 保证RIS数据收集器服务是UP。去Start > Programs > Administrative Tools > Services。





## 排除故障Cisco CallManager

### Cisco CallManager 跟踪

验证网关是否向Cisco CallManager登记。当网关向Cisco CallManager登记时，此trace捕获。重要消息用黑体字表示。

```
01/24/2009 18:45:36.042 Cisco CallManager|MGCPBhHandler:openGateway 172.16.15.129 - Waiting for
MGCPManager to register for this ipAddr|<CLID::MCS-7822-SERVER
Cluster><NID::172.16.240.124><CT::1,100,48,1.270><IP::172.16.15.129><DEV::> 01/24/2009
18:45:36.042 Cisco CallManager|MGCPBhHandler 172.16.15.129 - TCP Established with Device,
TCPHandle=0x5e65a00|<CLID::MCS-7822-SERVER-
Cluster><NID::172.16.240.124><CT::1,100,48,1.270><IP::172.16.15.129><DEV::> 01/24/2009
18:45:36.042 Cisco CallManager|MGCPHandler received msg from: 172.16.15.129 RSIP 4 *@AV-2620-4
MGCP 0.1 RM: restart |<CLID::MCS-7822-SERVER-
Cluster><NID::172.16.240.124><CT::1,100,50,1.40684><IP::172.16.15.129><DEV::> 01/24/2009
18:45:36.042 Cisco CallManager|<CLID::MCS-7822-SERVER-
Cluster><NID::172.16.240.124><CT::1,100,50,1.40684><MN::MGCPEndPoint><MV::*@AV-2620-4><DEV::>
01/24/2009 18:45:36.042 Cisco CallManager|MGCPInit - //// RSIP <restart> from*@AV-2620-
4|<CLID::MCS-7822-SERVER-
Cluster><NID::172.16.240.124><CT::1,100,50,1.40684><IP::172.16.15.129><DEV::> 01/24/2009
18:45:36.112 Cisco CallManager|CMPProcMon - -----Entered RouterVerification|<CLID::MCS-7822-
SERVER-Cluster><NID::172.16.240.124> 01/24/2009 18:45:36.112 Cisco CallManager|CMPProcMon - ----
Exited RouterVerification|<CLID::MCS-7822-SERVER-Cluster><NID::172.16.240.124> 01/24/2009
18:45:36.213 Cisco CallManager|MGCPpn9d - Started. DeviceName = S0/SU2/ds1-0@AV-2620-4, Side =
NETWORK|<CLID::MCS-7822-SERVER-Cluster><NID::172.16.240.124><CT::1,100,58,8.1><IP::><DEV::>
01/24/2009 18:45:36.213 Cisco CallManager|MGCPHandler send MSG SUCCESSFULLY to:172.16.15.129 200
4 |<CLID::MCS-7822-SERVER-
Cluster><NID::172.16.240.124><CT::1,100,50,1.40684><IP::172.16.15.129><DEV::> 01/24/2009
18:45:36.233 Cisco CallManager|MGCPHandler received MSG from: 172.16.15.129 NTFY 5 *@AV-2620-4
MGCP 0.1 X: 0 O: |<CLID::MCS-7822-SERVER-
Cluster><NID::172.16.240.124><CT::1,100,50,1.40685><IP::172.16.15.129><DEV::> 01/24/2009
18:45:36.233 Cisco CallManager|<CLID::MCS-7822-SERVER-
Cluster><NID::172.16.240.124><CT::1,100,50,1.40685><MN::MGCPEndPoint><MV::*@AV-2620-4><DEV::>
01/24/2009 18:45:36.303 Cisco CallManager|MGCPBhHandler:wait_MGCPRegisterBhHandler 172.16.15.129
- Notifying Mgr that TCP is open for the registering ipAddr;|<CLID::MCS-7822-SERVER-
Cluster><NID::172.16.240.124><CT::1,100,50,1.40684><IP::172.16.15.129><DEV::> 01/24/2009
18:45:36.313 Cisco CallManager|MGCPHandler send MSG SUCCESSFULLY to: 172.16.15.129 200 5
|<CLID::MCS-7822-SERVER-
Cluster><NID::172.16.240.124><CT::1,100,50,1.40685><IP::172.16.15.129><DEV::> 01/24/2009
18:45:36.313 Cisco CallManager|MGCPpn9d - Backhaul link OPEN for Devicename S0/SU2/ds1-0@AV-
2620-4|<CLID::MCS 7822-SERVER-
Cluster><NID::172.16.240.124><CT::1,100,50,1.40684><IP::172.16.15.129><DEV::> 01/24/2009
18:45:36.363 Cisco CallManager|ProcessDb - Dn = 8.XXXX, Line = 0, Display= , RouteThisPattern,
NetworkLocation = OffNet, DigitDiscardingInstruction = 0, WhereClause = |<CLID::MCS-7822-SERVER-
Cluster><NID::172.16.240.124><CT::1,100,58,8.1><IP::><DEV::> 01/24/2009 18:45:36.363 Cisco
CallManager|ProcessDb - Dn = 9.@, Line = 0, Display = , RouteThisPattern, NetworkLocation =
OffNet, DigitDiscardingInstruction = 0, WhereClause = |<CLID::MCS-7822-SERVER-
Cluster><NID::172.16.240.124><CT::1,100,58,8.1><IP::><DEV::> 01/24/2009 18:45:36.373 Cisco
CallManager|-->RISCMAccess::DeviceRegister(...)|<CLID::MCS-7822-SERVER-
Cluster><NID::172.16.240.124> 01/24/2009 18:45:36.373 Cisco CallManager|Device Register
deviceName : S0/SU2/ds1-0@AV-2620-4, IPAdress : 172.16.15.129, DeviceType : 121|<CLID::MCS-7822-
SERVER-Cluster><NID::172.16.240.124> 01/24/2009 18:45:36.373 Cisco CallManager|--
RISCMAccess::DeviceRegister(...)|<CLID::MCS-7822-SERVER-Cluster><NID::172.16.240.124> 01/24/2009
18:45:36.373 Cisco CallManager|Digit analysis: Add local pattern /8.XXXX , PID:
1,58,8|<CLID::MCS-7822-SERVER-Cluster><NID::172.16.240.124><CT::1,100,58,8.1><IP::><DEV::>
01/24/2009 18:45:36.383 Cisco CallManager|Digit analysis: Add local pattern/9.@ ,
PID:1,58,8|<CLID::MCS-7822-SERVER-Cluster><NID::172.16.240.124><CT::1,100,58,8.1><IP::><DEV::>
01/24/2009 18:45:36.573 Cisco CallManager|MGCPpn9d - Backhaul link OPEN forDevicename
S0/SU2/ds1-0@AV-2620-4|<CLID::MCS-7822-SERVER-
Cluster><NID::172.16.240.124><CT::1,100,58,8.1><IP::><DEV::> 01/24/2009 18:45:36.573 Cisco
CallManager|MGCPHandler send MSG SUCCESSFULLY to: 172.16.15.129 AUEP 302 S0/SU2/ds1-0/1@AV-2620-
```

```

4 MGCP 0.1 !--- Cisco CallManager sends this message for each B channel, !--- so you see 23
messages for the 23 B channels.F: X, A, I |<CLID::MCS-7822-SERVER-
Cluster><NID::172.16.240.124><CT::1,100,58,8.1><IP::><DEV::> 01/24/2009 18:45:36.573 Cisco
CallManager|MGCPHandler send MSG SUCCESSFULLY to: 172.16.15.129 AUEP 303 S0/SU2/ds1-0/2@AV-2620-
4 MGCP 0.1 F: X, A, I |<CLID::MCS-7822-SERVER-
Cluster><NID::172.16.240.124><CT::1,100,58,8.1><IP::><DEV::> 01/24/2009 18:45:36.573 Cisco
CallManager|MGCPHandler send MSG SUCCESSFULLY to: 172.16.15.129 AUEP 304 S0/SU2/ds1-0/3@AV-2620-
4 MGCP 0.1 F: X, A, I !--- You see the same messages for each channel up to channel 23.
|<CLID::MCS-7822-SERVER-Cluster><NID::172.16.240.124><CT::1,100,58,8.1><IP::><DEV::> 01/24/2009
18:45:36.583 Cisco CallManager|MGCPHandler send MSG SUCCESSFULLY to: 172.16.15.129 AUEP 324
S0/SU2/ds1-0/23@AV-2620-4 MGCP 0.1 F: X, A, I |<CLID::MCS-7822-SERVER-
Cluster><NID::172.16.240.124><CT::1,100,58,8.1><IP::><DEV::> 01/24/2009 18:45:36.633 Cisco
CallManager|MGCPHandler received MSG from: 172.16.15.129

```

Cisco CallManager收到从网关的这些消息每条B信道的。这些是网关的端口功能。

这是某些基本定义：

- ACK (I : ConnID
- x : ReqID
- L : LocalConnOpt (p : PktPeriod ,
- a : CmprAlg ,
- b : 带宽 ,
- e : EchoCancel ,
- gc : GainControl ,
- s : SilenceSupp ,
- t : TypeOfService ,
- r : ResourceResv ,
- nt : TypeOfNetwork ,
- v : EventPackages)
- 手机:sendonly、recvonly , sendrecv , 非激活 , 环回 , contest , netwtest的netwloop)

```

200 302 L: p:10-20, a:PCMU/PCMA, b:64, e:on, gc:-6-14, s:on, t:00-FF, r:g,
NT:IN;LOCAL,v:L;G;D;T;H L: p:10-220, a:G.729a;G.729b;G.729, b:8, e:on, gc:-6-14, s:on, t:00-FF,
r:g, NT:IN;LOCAL, v:L;G;D;T;H L: p:10-110, a:G.726-16, b:16, e:on, gc:-6-14, s:on, t:00-FF, r:g,
NT:IN;LOCAL,v:L;G;D;T;H L: p:10-70, a:G.726-24, b:24, e:on, gc:-6-14, s:on, t:00-FF, r:g,
NT:IN;LOCAL, v:L;G;D;T;H L: p:10-50, a:G.726-32, b:32, e:on, gc:-6-14, s:on, t:00-FF, r:g,
NT:IN;LOCAL, v:L;G;D;T;H M: sendonly, recvonly, sendrecv, inactive, loopback, contest,
netwloop, netwtest |<CLID::MCS-7822-SERVER-
Cluster><NID::172.16.240.124><CT::1,100,50,1.40686><IP::172.16.15.129><DEV::> 01/24/2009
18:45:36.633 Cisco CallManager|MGCPHandler received RESP header w/transId= 302|<CLID::MCS-7822-
SERVER-Cluster><NID::172.16.240.124><CT::1,100,50,1.40686><IP::172.16.15.129><DEV::> 01/24/2009
18:45:36.633 Cisco CallManager|<CLID::MCS-7822-SERVER-
Cluster><NID::172.16.240.124><CT::1,100,50,1.40686><MN::MGCPEndPoint><MV::S0/SU2/ds1-0/1@AV-
2620-4><DEV::S0/SU2/ds1-0@AV-2620-4> 01/24/2009 18:45:36.633 Cisco CallManager|MGCPHandler
received RESP header w/transId= 302 FOUND a match for AUED|<CLID::MCS-7822-SERVER-Cluster>
<NID::172.16.240.124><CT::1,100,50,1.40686><IP::172.16.15.129><DEV::S0/SU2/ds1-0@AV-2620-4>
01/24/2009 18:45:36.663 Cisco CallManager|MGCPHandler received MSG from: 172.16.15.129 200 303
L: p:10-20, a:PCMU/PCMA, b:64, e:on, gc:-6-14, s:on, t:00-FF, r:g, NT:IN;LOCAL,v:L;G;D;T;H L:
p:10-220, a:G.729a;G.729b;G.729, b:8, e:on, gc:-6-14, s:on, t:00-FF, r:g, NT:IN;LOCAL,
v:L;G;D;T;H L: p:10-110, a:G.726-16, b:16, e:on, gc:-6-14, s:on, t:00-FF, r:g,
NT:IN;LOCAL,v:L;G;D;T;H L: p:10-70, a:G.726-24, b:24, e:on, gc:-6-14, s:on, t:00-FF, r:g,
NT:IN;LOCAL,v:L;G;D;T;H L: p:10-50, a:G.726-32, b:32, e:on, gc:-6-14, s:on, t:00-FF, r:g,
NT:IN;LOCAL, v:L;G;D;T;H M: sendonly, recvonly, sendrecv, inactive, loopback, contest,
netwloop, netwtest |<CLID::MCS-7822-SERVER-
Cluster><NID::172.16.240.124><CT::1,100,50,1.40687><IP::172.16.15.129><DEV::> 01/24/2009
18:45:36.663 Cisco CallManager|MGCPHandler received RESP header w/ transId= 303|<CLID::MCS-7822-
SERVER-Cluster><NID::172.16.240.124><CT::1,100,50,1.40687><IP::172.16.15.129><DEV::> 01/24/2009
18:45:36.663 Cisco CallManager|<CLID::MCS-7822-SERVER-

```

```
Cluster><NID::172.16.240.124><CT::1,100,50,1.40687><MN::MGCPEndPoint><MV::S0/SU2/ds1-0/2@AV-2620-4><DEV::S0/SU2/ds1-0@AV-2620-4> 01/24/2009 18:45:36.663 Cisco CallManager|MGCPHandler received RESP header w/ transId= 303 FOUND a match for AUED|<CLID::MCS-7822-SERVER-Cluster><NID::172.16.240.124><CT::1,100,50,1.40687><IP::172.16.15.129><DEV::S0/SU2/ds1-0@AV-2620-4> 01/24/2009 18:45:36.703 Cisco CallManager|MGCPHandler received MSG from: 172.16.15.129 !--- You see the same message repeated for each channel. 01/24/2009 18:45:37.474 Cisco CallManager|MGCPpn9d:restart0_MGCPDlEstablishConf -Datalink or D-Channel has been established. DeviceName = S0/SU2/ds1-0@AV-2620-4|<CLID::MCS-7822-SERVER-Cluster><NID::172.16.240.124><CT::1,100,48,1.271><IP::172.16.15.129><DEV::> 01/24/2009 18:45:37.474 Cisco CallManager|DchannelInService: deviceName = S0/SU2/ds1-0@AV-2620-4, channelId = 24|<CLID::MCS-7822-SERVER-Cluster><NID::172.16.240.124> 01/24/2009 18:45:38.486 Cisco CallManager|MGCPpn9d:restart0_StatusPoll - Port Status for S0/SU2/ds1-0@AV-2620-4 1-8=66666666 9-16=66666666 17-24=66666669 25-32=77777777|<CLID::MCS-7822-SERVER-Cluster><NID::172.16.240.124><CT::1,100,48,1.271><IP::172.16.15.129><DEV::> 01/24/2009 18:45:41.490 Cisco CallManager| |<CLID::MCS-7822-SERVER-Cluster><NID::172.16.240.124> 01/24/2009 18:45:41.490 Cisco CallManager|Out Message -- PriRestartMsg -- Protocol=PriNi2Protocol|<CLID::MCS-7822-SERVER-Cluster><NID::172.16.240.124> 01/24/2009 18:45:41.490 Cisco CallManager|Ie - Q931ChannelIdIe IEData= 18 03 A9 83 81|<CLID::MCS-7822-SERVER-Cluster><NID::172.16.240.124> 01/24/2009 18:45:41.490 Cisco CallManager|Ie - Q931RestartIndIe IEData= 79 01 80|<CLID::MCS-7822-SERVER-Cluster><NID::172.16.240.124> 01/24/2009 18:45:41.490 Cisco CallManager|MMan_Id= 0. (iep= 0 dsl= 100 sapi= 0 ces= 0 IpAddr=810f10ac IpPort=2427)|<CLID::MCS-7822-SERVER-Cluster><NID::172.16.240.124> 01/24/2009 18:45:41.490 Cisco CallManager|IsdnMsgData2= 08 02 00 00 46 18 03 A9 83 81 79 01 80 01/24/2009 18:45:41.520 Cisco CallManager| |<CLID::MCS-7822-SERVER-Cluster><NID::172.16.240.124> 01/24/2009 18:45:41.520 Cisco CallManager|In Message -- PriRestartAcknowledgeMsg -- Protocol= PriNi2Protocol|<CLID::MCS-7822-SERVER-Cluster><NID::172.16.240.124> 01/24/2009 18:45:41.520 Cisco CallManager|Ie - Q931ChannelIdIe -- IEData= 1803 A9 83 81|<CLID::MCS-7822-SERVER-Cluster><NID::172.16.240.124> 01/24/2009 18:45:41.520 Cisco CallManager|Ie - Q931RestartIndIe -- IEData= 7901 80|<CLID::MCS-7822-SERVER-Cluster><NID::172.16.240.124> 01/24/2009 18:45:41.520 Cisco CallManager|MMan_Id= 0. (iep= 0 dsl= 100 sapi= 0 ces= 0 IpAddr=810f10ac IpPort=2427)|<CLID::MCS-7822-SERVER-Cluster><NID::172.16.240.124> 01/24/2009 18:45:41.520 Cisco CallManager|IsdnMsgData1= 08 02 80 00 4E 18 03A9 83 81 79 01 80 |<CLID::MCS-7822-SERVER-Cluster><NID::172.16.240.124>
```

Cisco CallManager重新启动每个信道，并且从网关获得ACK。

## 验证

使用本部分可确认配置能否正常运行。

要验证配置，请做呼出对PSTN和呼入呼叫从PSTN到思科IP电话。这是从呼入和呼出电话的debug输出：

## 呼出的Debug输出从IP电话到PSTN

### Cisco CallManager 跟踪

Cisco IP电话用目录号2000呼叫一个PSTN电话用第2012。此测验使用一个四位数字PSTN电话。然而，请记住实验室的该外部，PSTN电话有完全合格的北美编号方案(NANP)。外线的接入代码是8。

```
01/24/2009 19:05:40.073 Cisco CallManager|StationInit: 4b16420
KeypadButtonkpButton=8. |<CLID::MCS-7822-SERVER
Cluster><NID::172.16.240.124><CT::1,100,95,1.102423><IP::172.16.240.126><DEV::SEP003094C2856E>
01/24/2009 19:05:40.073 Cisco CallManager|StationD: 4b16420 StopTone. |<CLID::MCS-7822-SERVER-Cluster><NID::172.16.240.124><CT::1,100,95,1.102423><IP::172.16.240.126><DEV::SEP003094C2856E>01/24/2009 19:05:40.073 Cisco CallManager|StationD: 4b16420 SelectSoftKeysinstance=1 reference=16777368 softKeySetIndex=6 validKeyMask=-1. |<CLID::MCS-7822-SERVER-Cluster><NID::172.16.240.124><CT::1,100,95,1.102423><IP::172.16.240.126><DEV::SEP003094C2856E>
```

01/24/2009 19:05:40.073 Cisco CallManager|Digit analysis: match(fqcn="2000", cn="2000", pss="", dd="8") |<CLID::MCS-7822-SERVER-Cluster><NID::172.16.240.124><CT::1,100,95,1.102423><IP::172.16.240.126><DEV::SEP003094C2856E>  
01/24/2009 19:05:40.073 Cisco CallManager|Digit analysis:  
potentialMatches=ExclusivelyOffnetPotentialMatchesExist |<CLID::MCS-7822-SERVER-Cluster><NID::172.16.240.124><CT::1,100,95,1.102423><IP::172.16.240.126><DEV::SEP003094C2856E>  
01/24/2009 19:05:40.073 Cisco CallManager|<CLID::MCS-7822-SERVER-Cluster><NID::172.16.240.124><CT::1,100,95,1.102423><MN::DirectoryNumber><MV::2000><DEV::SEP003094C2856E> 01/24/2009 19:05:40.073 Cisco CallManager|StationD: 4b16420 StartTone tone=34(OutsideDialTone). |<CLID::MCS-7822-SERVER-Cluster><NID::172.16.240.124><CT::1,100,95,1.102423><IP::172.16.240.126><DEV::SEP003094C2856E>  
01/24/2009 19:05:41.545 Cisco CallManager|StationInit: 4b16420  
KeypadButtonkpButton=2. |<CLID::MCS-7822-SERVER-Cluster><NID::172.16.240.124><CT::1,100,95,1.102425><IP::172.16.240.126><DEV::SEP003094C2856E>  
01/24/2009 19:05:41.555 Cisco CallManager|StationD: 4b16420 StopTone. |<CLID::MCS-7822-SERVER-Cluster><NID::172.16.240.124><CT::1,100,95,1.102425><IP::172.16.240.126><DEV::SEP003094C2856E>  
01/24/2009 19:05:41.555 Cisco CallManager|StationD: 4b16420 SelectSoftKeys instance=1  
reference=16777368 softKeySetIndex=6 validKeyMask=-1. |<CLID::MCS-7822-SERVER-Cluster><NID::172.16.240.124><CT::1,100,95,1.102425><IP::172.16.240.126><DEV::SEP003094C2856E>  
01/24/2009 19:05:41.555 Cisco CallManager|Digit analysis: match(fqcn="2000", cn="2000", pss="", DD="82") |<CLID::MCS-7822-SERVER-Cluster><NID::172.16.240.124><CT::1,100,95,1.102425><IP::172.16.240.126><DEV::SEP003094C2856E>  
01/24/2009 19:05:41.555 Cisco CallManager|Digit analysis:  
potentialMatches=ExclusivelyOffnetPotentialMatchesExist |<CLID::MCS-7822-SERVER-Cluster><NID::172.16.240.124><CT::1,100,95,1.102425><IP::172.16.240.126><DEV::SEP003094C2856E>  
01/24/2009 19:05:42.106 Cisco CallManager|StationInit: 4b16420  
KeypadButtonkpButton=0. |<CLID::MCS-7822-SERVER-Cluster><NID::172.16.240.124><CT::1,100,95,1.102426><IP::172.16.240.126><DEV::SEP003094C2856E>  
01/24/2009 19:05:42.116 Cisco CallManager|Digit analysis: match(fqcn="2000", cn="2000", pss="", DD="820") |<CLID::MCS-7822-SERVER-Cluster><NID::172.16.240.124><CT::1,100,95,1.102426><IP::172.16.240.126><DEV::SEP003094C2856E>  
01/24/2009 19:05:42.116 Cisco CallManager|Digit analysis:  
potentialMatches=ExclusivelyOffnetPotentialMatchesExist |<CLID::MCS-7822-SERVER-Cluster><NID::172.16.240.124><CT::1,100,95,1.102426><IP::172.16.240.126><DEV::SEP003094C2856E>  
01/24/2009 19:05:42.687 Cisco CallManager|StationInit: 4b16420 KeypadButton  
kpButton=1. |<CLID::MCS-7822-SERVER-Cluster><NID::172.16.240.124><CT::1,100,95,1.102428><IP::172.16.240.126><DEV::SEP003094C2856E>  
01/24/2009 19:05:42.697 Cisco CallManager|Digit analysis: match(fqcn="2000",cn="2000", pss="", DD="8201") |<CLID::MCS-7822-SERVER-Cluster><NID::172.16.240.124><CT::1,100,95,1.102428><IP::172.16.240.126><DEV::SEP003094C2856E>  
01/24/2009 19:05:42.697 Cisco CallManager|Digit analysis:  
potentialMatches=ExclusivelyOffnetPotentialMatchesExist |<CLID::MCS-7822-SERVER-Cluster><NID::172.16.240.124><CT::1,100,95,1.102428><IP::172.16.240.126><DEV::SEP003094C2856E>  
01/24/2009 19:05:43.208 Cisco CallManager|StationInit: 4b16420 KeypadButton  
kpButton=2. |<CLID::MCS-7822-SERVER-Cluster><NID::172.16.240.124><CT::1,100,95,1.102429><IP::172.16.240.126><DEV::SEP003094C2856E>  
01/24/2009 19:05:43.208 Cisco CallManager|Digit analysis: match(fqcn="2000",cn="2000", pss="", DD="82012") |<CLID::MCS-7822-SERVER-Cluster><NID::172.16.240.124><CT::1,100,95,1.102429><IP::172.16.240.126><DEV::SEP003094C2856E>  
01/24/2009 19:05:43.208 Cisco CallManager|Digit analysis: analysis results |<CLID::MCS-7822-SERVER-Cluster><NID::172.16.240.124><CT::1,100,95,1.102429><IP::172.16.240.126><DEV::SEP003094C2856E>  
01/24/2009 19:05:43.218 Cisco CallManager|PretransformCallingPartyNumber=2000  
|CallingPartyNumber=2000 |DialingPartition= |DialingPattern=8.XXXX  
|DialingRoutePatternRegularExpression=(8)(XXXX) |DialingWhere= |PatternType=Enterprise  
|PotentialMatches=NoPotentialMatchesExist |DialingSdlProcessId=(1,58,8)  
|PretransformDigitString=82012 |PretransformTagsList=ACCESS-CODE:SUBSCRIBER  
|PretransformPositionalMatchList=8:2012 |CollectedDigits=82012 |UnconsumedDigits=  
|TagsList=ACCESS-CODE:SUBSCRIBER |PositionalMatchList=8:2012 |VoiceMailbox= |DisplayName=  
|RouteBlockFlag=RouteThisPattern |InterceptPartition= |InterceptPattern= |InterceptWhere=  
|InterceptSdlProcessId=(0,0,0) |InterceptSsType=0 |InterceptSsKey=0 |<CLID::MCS-7822-SERVER-Cluster><NID::172.16.240.124><CT::1,100,95,1.102429><IP::172.16.240.126><DEV::SEP003094C2856E>  
01/24/2009 19:05:43.218 Cisco CallManager|MGCPpn9d:restart0\_CcSetupReq - S1/DS1-0@AV-2620-4 My  
Region=Default, Other Side Region=Default |<CLID::MCS-7822-SERVER-

Cluster><NID::172.16.240.124><CT::1,100,95,1.102429><IP::172.16.240.126><DEV::SEP003094C2856E>  
01/24/2009 19:05:43.218 Cisco CallManager|Locations: reserve: cdccPID=(1.13.77)Orig=Dest=0 no  
need to reserve bw.|<CLID::MCS-7822-SERVER-Cluster><NID::172.16.240.124> 01/24/2009 19:05:43.218  
Cisco CallManager|MGCpPn9d - initPortInfo: portInfo[22]endpoint=S0/SU2/ds1-0/23@AV-2620-4,  
ci=16777369|<CLID::MCS-7822-SERVER-  
Cluster><NID::172.16.240.124><CT::1,100,95,1.102429><IP::172.16.240.126><DEV::SEP003094C2856E>  
01/24/2009 19:05:43.218 Cisco CallManager|<CLID::MCS-7822-SERVER-  
Cluster><NID::172.16.240.124><CT::1,100,95,1.102429><MN::Directory  
Number><MV::2000><DEV::SEP003094C2856E> 01/24/2009 19:05:43.218 Cisco CallManager|StationD:  
4b16420 SelectSoftKeys instance=1 reference=16777368 softKeySetIndex=8 validKeyMask=-  
1.|<CLID::MCS-7822-SERVER-  
Cluster><NID::172.16.240.124><CT::1,100,95,1.102429><IP::172.16.240.126><DEV::SEP003094C2856E>  
01/24/2009 19:05:43.228 Cisco CallManager|MGCPhandler send msg SUCCESSFULLY to: 172.16.15.129  
CRCX 325 S0/SU2/ds1-0/23@AV-2620-4 MGCP 0.1 C: D0000000010000990000000000000001 M: inactive  
|<CLID::MCS-7822-SERVER-  
Cluster><NID::172.16.240.124><CT::1,100,95,1.102429><IP::172.16.240.126><DEV::SEP003094C2856E>  
01/24/2009 19:05:43.268 Cisco CallManager|MGCPhandler received msg from: 172.16.15.129 200 325  
I: 2 v=0 c=IN IP4 172.16.15.129 m=audio 16526 RTP/AVP 0 8 96 97 98 2 99 18 a=rtpmap:96  
G.729a/8000/1 a=rtpmap:97 G.726-16/8000/1 a=rtpmap:98 G.726-24/8000/1 a=rtpmap:99 G.729b/8000/1  
|<CLID::MCS-7822-SERVER-  
Cluster><NID::172.16.240.124><CT::1,100,50,1.40789><IP::172.16.15.129><DEV::> 01/24/2009  
19:05:43.268 Cisco CallManager|MGCPhandler received RESP header w/ transId= 325|<CLID::MCS-7822-  
SERVER-Cluster><NID::172.16.240.124><CT::1,100,50,1.40789><IP::172.16.15.129><DEV::> 01/24/2009  
19:05:43.278 Cisco CallManager|<CLID::MCS-7822-SERVER-  
Cluster><NID::172.16.240.124><CT::1,100,50,1.40789><MN::MGCP endPoint><MV::S0/SU2/ds1-0/23@AV-  
2620-4><DEV::S0/SU2/ds1-0@AV-2620-4> 01/24/2009 19:05:43.278 Cisco CallManager|MGCPhandler  
received RESP header w/ transId= 325 FOUND a match for CRCX|<CLID::MCS-7822-SERVER-  
Cluster><NID::172.16.240.124><CT::1,100,50,1.40789><IP::172.16.15.129><DEV::S0/SU2/ds1-0@AV-  
2620-4> 01/24/2009 19:05:43.278 Cisco CallManager|MGCPhandler recv CRCX Ack with RTP PortNum:  
16526|<CLID::MCS-7822-SERVER-  
Cluster><NID::172.16.240.124><CT::1,100,50,1.40789><IP::172.16.15.129><DEV::S0/SU2/ds1-0@AV-  
2620-4> 01/24/2009 19:05:43.278 Cisco CallManager||<CLID::MCS-7822-SERVER-  
Cluster><NID::172.16.240.124> 01/24/2009 19:05:43.278 Cisco CallManager|Out Message --  
PriSetupMsg -- Protocol=PriNi2Protocol|<CLID::MCS-7822-SERVER-Cluster><NID::172.16.240.124>  
01/24/2009 19:05:43.278 Cisco CallManager|Ie - Ni2BearerCapabilityIe IEData=04 03 80 90 A2  
|<CLID::MCS-7822-SERVER-Cluster><NID::172.16.240.124> 01/24/2009 19:05:43.278 Cisco  
CallManager|Ie - Q931ChannelIdIe IEData= 18 03 A983 97 |<CLID::MCS-7822-SERVER-  
Cluster><NID::172.16.240.124> 01/24/2009 19:05:43.278 Cisco CallManager|Ie - Q931CallingPartyIe  
IEData= 6C 06 00 80 32 30 30 30 |<CLID::MCS-7822-SERVER-Cluster><NID::172.16.240.124> 01/24/2009  
19:05:43.278 Cisco CallManager|Ie - Q931CalledPartyIe IEData= 70 06 80 38 32 30 31 32  
|<CLID::MCS-7822-SERVER-Cluster><NID::172.16.240.124> 01/24/2009 19:05:43.278 Cisco  
CallManager|MMan\_Id= 0. (iep= 0 dsl= 100 sapi= 0 ces= 0 IpAddr=810f10ac IpPort=2427)|<CLID::MCS-  
7822-SERVER-Cluster><NID::172.16.240.124> 01/24/2009 19:05:43.278 Cisco  
CallManager|IsdnMsgData2= 08 02 00 01 05 04 03 8090 A2 18 03 A9 83 97 6C 06 00 80 32 30 30 30 70  
06 80 38 32 30 31 32 |<CLID::MCS-7822-SERVER-Cluster><NID::172.16.240.124> 01/24/2009  
19:05:43.278 Cisco CallManager|MGCpBhHandler - Sending BhHdr: 0004 0000 0010 0100 0001 001f  
|<CLID::MCS-7822-SERVER-  
Cluster><NID::172.16.240.124><CT::1,100,95,1.102429><IP::172.16.240.126><DEV::SEP003094C2856E>  
01/24/2009 19:05:43.328 Cisco CallManager|MGCpBhHandler 172.16.15.129 - TCP msg available from  
Device|<CLID::MCS-7822-SERVER-  
Cluster><NID::172.16.240.124><CT::1,100,48,1.295><IP::172.16.15.129><DEV::> 01/24/2009  
19:05:43.328 Cisco CallManager|MGCpBhHandler - Receiving BhHdr: 0004 0000 0011 0100 0001 000a  
|<CLID::MCS-7822-SERVER-Cluster><NID::172.16.240.124>  
<CT::1,100,48,1.295><IP::172.16.15.129><DEV::> 01/24/2009 19:05:43.328 Cisco CallManager|  
|<CLID::MCS-7822-SERVER-Cluster><NID::172.16.240.124> 01/24/2009 19:05:43.328 Cisco  
CallManager|In Message -- PriCallProceedingMsg --Protocol= PriNi2Protocol|<CLID::MCS-7822-  
SERVER-Cluster><NID::172.16.240.124> 01/24/2009 19:05:43.328 Cisco CallManager|Ie -  
Q931ChannelIdIe -- IEData= 18 03 A9 83 17 |<CLID::MCS-7822-SERVER-Cluster><NID::172.16.240.124>  
01/24/2009 19:05:43.328 Cisco CallManager|MMan\_Id= 0. (iep= 0 dsl= 100 sapi= 0 ces= 0  
IpAddr=810f10ac IpPort=2427)|<CLID::MCS-7822-SERVER-Cluster><NID::172.16.240.124> 01/24/2009  
19:05:43.328 Cisco CallManager|IsdnMsgData1= 08 02 80 01 02 18 03 A9 83 17 |<CLID::MCS-7822-  
SERVER-Cluster><NID::172.16.240.124> 01/24/2009 19:05:43.328 Cisco CallManager|ConnectionManager  
- wait\_AuConnectRequest(16777368,16777369): INFORM MEDIA LAYER|<CLID::MCS-7822-SERVER-  
Cluster><NID::172.16.240.124><CT::1,100,48,1.295><IP::172.16.15.129><DEV::> 01/24/2009

```
19:05:43.328 Cisco CallManager|ConnectionManager - storeMediaInfo(16777368):ADD NEW ENTRY, tail
== 1 |<CLID::MCS-7822-SERVER-
Cluster><NID::172.16.240.124><CT::1,100,48,1.295><IP::172.16.15.129><DEV::> 01/24/2009
19:05:43.328 Cisco CallManager|ConnectionManager - storeMediaInfo(16777369):ADD NEW ENTRY, tail
== 2 |<CLID::MCS-7822-SERVER-
Cluster><NID::172.16.240.124><CT::1,100,48,1.295><IP::172.16.15.129><DEV::> 01/24/2009
19:05:43.328 Cisco CallManager|MediaCoordinator - wait_AuConnectRequest() |<CLID::MCS-7822-
SERVER-Cluster><NID::172.16.240.124><CT::1,100,48,1.295><IP::172.16.15.129><DEV::> 01/24/2009
19:05:43.338 Cisco CallManager|MediaCoordinator - wait_AuConnectRequest - starting MediaManager
w/ existing (0) connections|<CLID::MCS-7822-SERVER-
Cluster><NID::172.16.240.124><CT::1,100,48,1.295><IP::172.16.15.129><DEV::> 01/24/2009
19:05:43.338 Cisco CallManager|MediaCoordinator - wait_AuConnectRequest - new
MediaManager(40,25) started|<CLID::MCS-7822-SERVER-
Cluster><NID::172.16.240.124><CT::1,100,48,1.295><IP::172.16.15.129><DEV::> 01/24/2009
19:05:43.338 Cisco CallManager|MediaManager(25) started|<CLID::MCS-7822-SERVER-
Cluster><NID::172.16.240.124><CT::1,100,40,25.1><IP::><DEV::> 01/24/2009 19:05:43.338 Cisco
CallManager|MediaManager - wait_AuConnectRequest |<CLID::MCS-7822-SERVER-
Cluster><NID::172.16.240.124><CT::1,100,48,1.295><IP::172.16.15.129><DEV::> 01/24/2009
19:05:43.338 Cisco CallManager|MediaManager - wait_AuConnectRequest - normal
connection|<CLID::MCS-7822-SERVER-
Cluster><NID::172.16.240.124><CT::1,100,48,1.295><IP::172.16.15.129><DEV::> 01/24/2009
19:05:43.338 Cisco CallManager|StationD: 4b16420 CallState callState=12(Proceed) lineInstance=1
callReference=16777368 |<CLID::MCS-7822-SERVER-
Cluster><NID::172.16.240.124><CT::1,100,48,1.295><IP::172.16.15.129><DEV::> 01/24/2009
19:05:43.338 Cisco CallManager|StationD: 4b16420 CallInfo callingPartyName=' callingParty=2000
cgpnVoiceMailbox=2000 calledPartyName=' calledParty=82012 cdpnVoiceMailbox=
originalCalledPartyName=' originalCalledParty=82012 originalCdpnVoiceMailbox=
originalCdpnRedirectReason=0lastRedirectingPartyName='lastRedirectingParty=
lastRedirectingVoiceMailbox= lastRedirectingReason=0 callType=2(OutBound) lineInstance=1
callReference=16777368. |<CLID::MCS-7822-SERVER-Cluster><NID::172.16.240.124>
<CT::1,100,48,1.295><IP::172.16.15.129><DEV::> 01/24/2009 19:05:43.338 Cisco
CallManager|StationD: star_StationOutputCallInfo():callInfo: CI=16777368, CallingPartyName=,
CallingParty=2000, CalledPartyName=, CalledParty=82012, OriginalCalledPartyName=,
OriginalCalledParty=82012, lastRedirectingPartyName=, lastRedirectingParty= |<CLID::MCS-7822-
SERVER-Cluster><NID::172.16.240.124><CT::1,100,48,1.295><IP::172.16.15.129><DEV::> 01/24/2009
19:05:43.338 Cisco CallManager|StationD: 4b16420 DialedNumber dialedNumber=82012 lineInstance=1
callReference=16777368. |<CLID::MCS-7822-SERVER-
Cluster><NID::172.16.240.124><CT::1,100,48,1.295><IP::172.16.15.129><DEV::> 01/24/2009
19:05:43.378 Cisco CallManager|MediaManager - wait_AuConnectReply |<CLID::MCS-7822-SERVER-
Cluster><NID::172.16.240.124><CT::1,100,52,22.1><IP::><DEV::> 01/24/2009 19:05:43.378 Cisco
CallManager|MediaManager - wait_AuConnectReply -received 1 responses, fowarding reply for
party1(16777368) and party2(16777369) |<CLID::MCS-7822-SERVER-
Cluster><NID::172.16.240.124><CT::1,100,52,22.1><IP::><DEV::> 01/24/2009 19:05:43.378 Cisco
CallManager|MediaCoordinator - wait_AuConnectReply |<CLID::MCS-7822-SERVER-
Cluster><NID::172.16.240.124><CT::1,100,52,22.1><IP::><DEV::> 01/24/2009 19:05:43.378 Cisco
CallManager|ConnectionManager - wait_AuConnectReply(16777368,16777369) |<CLID::MCS-7822-SERVER-
Cluster><NID::172.16.240.124><CT::1,100,52,22.1><IP::><DEV::> 01/24/2009 19:05:43.378 Cisco
CallManager|StationD: 4b16420 StopTone. |<CLID::MCS-7822-SERVER-
Cluster><NID::172.16.240.124><CT::1,100,8,26.1><IP::><DEV::> 01/24/2009 19:05:43.378 Cisco
CallManager|StationD: 4b16420 OpenReceiveChannel conferenceID=0 passThruPartyID=417
millisecondPacketSize=20 compressionType=4(Media_Payload_G711Ulaw64k) qualifierIn=?. myIP:
7ef010ac (172.16.240.126) |<CLID::MCS-7822- SERVER-
Cluster><NID::172.16.240.124><CT::1,100,8,26.1><IP::><DEV::> 01/24/2009 19:05:43.378 Cisco
CallManager|MGCPHandler send msg SUCCESSFULLY to:172.16.15.129 MDCX 326 S0/SU2/ds1-0/23@AV-2620-
4 MGCP 0.1 C: D000000001000009900000000000000000000000000000000 I: 2 X: 17 L: p:20, a:PCMU, s:off M: recvonly R:
D/[0-9ABCD*#] Q: process,loop |<CLID::MCS-7822-SERVER-
Cluster><NID::172.16.240.124><CT::1,100,52,22.1><IP::><DEV::> 01/24/2009 19:05:43.388 Cisco
CallManager|MGCPBhHandler 172.16.15.129 - TCP msg available from Device|<CLID::MCS-7822-SERVER-
Cluster><NID::172.16.240.124><CT::1,100,48,1.296><IP::172.16.15.129><DEV::> 01/24/2009
19:05:43.388 Cisco CallManager|MGCPBhHandler - Receiving BhHdr: 0004 0000 0011 0100 0001 0005
|<CLID::MCS-7822-SERVER-
Cluster><NID::172.16.240.124><CT::1,100,48,1.296><IP::172.16.15.129><DEV::> 01/24/2009
19:05:43.388 Cisco CallManager| |<CLID::MCS-7822-SERVER-Cluster><NID::172.16.240.124> 01/24/2009
19:05:43.388 Cisco CallManager|In Message -- PriAlertingMsg -- Protocol=
```





Cluster><NID::172.16.240.124><CT::1,100,48,1.296><IP::172.16.15.129><DEV::> 01/24/2009  
19:05:43.448 Cisco CallManager|MGCPHandler received msg from:172.16.15.129 200 327 OK  
|<CLID::MCS-7822-SERVER-  
Cluster><NID::172.16.240.124><CT::1,100,50,1.40791><IP::172.16.15.129><DEV::> 01/24/2009  
19:05:43.448 Cisco CallManager|MGCPHandler received RESP header w/ transId= 327|<CLID::MCS-7822-  
SERVER-Cluster><NID::172.16.240.124><CT::1,100,50,1.40791><IP::172.16.15.129><DEV::> 01/24/2009  
19:05:43.448 Cisco CallManager|<CLID::MCS-7822-SERVER-Cluster>  
<NID::172.16.240.124><CT::1,100,50,1.40791><MN::MGCPendPoint><MV::S0/SU2/ds1-0/23@AV-2620-  
4><DEV::S0/SU2/ds1-0@AV-2620-4> 01/24/2009 19:05:43.448 Cisco CallManager|MGCPHandler received  
RESP header w/ transId= 327 FOUND a match for MDCX|<CLID::MCS-7822-SERVER-Cluster>  
<NID::172.16.240.124><CT::1,100,50,1.40791><IP::172.16.15.129><DEV::S0/SU2/ds1-0@AV-2620-4>  
01/24/2009 19:05:46.563 Cisco CallManager|MGCPBhHandler 172.16.15.129 - TCP msg available from  
Device|<CLID::MCS-7822-SERVER-Cluster>  
<NID::172.16.240.124><CT::1,100,48,1.297><IP::172.16.15.129><DEV::> 01/24/2009 19:05:46.563  
Cisco CallManager|MGCPBhHandler - Receiving BhHdr:0004 0000 0011 0100 0001 0005 |<CLID::MCS-  
7822-SERVER-Cluster><NID::172.16.240.124><CT::1,100,48,1.297><IP::172.16.15.129><DEV::>  
01/24/2009 19:05:46.563 Cisco CallManager| |<CLID::MCS-7822-SERVER-Cluster><NID::172.16.240.124>  
01/24/2009 19:05:46.563 **Cisco CallManager|In Message -- PriConnectMsg -- Protocol=  
PriNi2Protocol**|<CLID::MCS-7822-SERVER-Cluster><NID::172.16.240.124> 01/24/2009 19:05:46.563  
Cisco CallManager|MMan\_Id= 0. (iep= 0 dsl= 100 sapi= 0 ces= 0 IpAddr=810f10ac  
IpPort=2427)|<CLID::MCS-7822-SERVER-Cluster><NID::172.16.240.124> 01/24/2009 19:05:46.563 Cisco  
CallManager|IsdnMsgData1= 08 02 80 01 07 |<CLID::MCS-7822-SERVER-Cluster><NID::172.16.240.124>  
01/24/2009 19:05:46.563 Cisco CallManager|MGCPpn9cnet - call\_received7\_PriNi2Conn  
SessionID=0x00000000|<CLID::MCS-7822-SERVER-  
Cluster><NID::172.16.240.124><CT::1,100,48,1.297><IP::172.16.15.129><DEV::> 01/24/2009  
19:05:46.573 Cisco CallManager| |<CLID::MCS-7822-SERVER-Cluster><NID::172.16.240.124> 01/24/2009  
19:05:46.573 **Cisco CallManager|Out Message -- PriConnectAcknowledgeMsg -- Protocol=  
PriNi2Protocol**|<CLID::MCS-7822-SERVER-Cluster><NID::172.16.240.124> 01/24/2009 19:05:46.573  
Cisco CallManager|MMan\_Id= 0. (iep= 0 dsl= 100 sapi= 0 ces= 0 IpAddr=810f10ac  
IpPort=2427)|<CLID::MCS-7822-SERVER-Cluster><NID::172.16.240.124> 01/24/2009 19:05:46.573 Cisco  
CallManager|IsdnMsgData2= 08 02 00 01 0F |<CLID::MCS-7822-SERVER-Cluster><NID::172.16.240.124>  
01/24/2009 19:05:46.573 Cisco CallManager|MGCPBhHandler - Sending BhHdr: 0004 0000 0010 0100  
0001 0005 |<CLID::MCS-7822-SERVER-Cluster>  
<NID::172.16.240.124><CT::1,100,48,1.297><IP::172.16.15.129><DEV::> 01/24/2009 19:05:46.573  
Cisco CallManager|CTI: RoutePatternToCtiCommandData::findValue() : RP=2000:, bRc=0, T=,  
#entries=0|<CLID::MCS-7822-SERVER-Cluster><NID::172.16.240.124> 01/24/2009 19:05:46.573 Cisco  
CallManager|StationD: 4b16420 StopTone.|<CLID::MCS-7822-SERVER-  
Cluster><NID::172.16.240.124><CT::1,100,48,1.297><IP::172.16.15.129><DEV::> 01/24/2009  
19:05:46.573 Cisco CallManager|StationD: 4b16420 CallState callState=5(Connected) lineInstance=1  
callReference=16777368|<CLID::MCS-7822-SERVER-  
Cluster><NID::172.16.240.124><CT::1,100,48,1.297><IP::172.16.15.129><DEV::> 01/24/2009  
19:05:46.573 Cisco CallManager|StationD: 4b16420 CallInfo callingPartyName='callingParty=2000  
cgpnVoiceMailbox=2000 calledPartyName=' calledParty=82012 cdpnVoiceMailbox=  
originalCalledPartyName=' originalCalledParty=  
originalCdpnVoiceMailbox=originalCdpnRedirectReason=0lastRedirectingPartyName='  
lastRedirectingParty=82012 lastRedirectingVoiceMailbox= lastRedirectingReason=0  
callType=2(OutBound) lineInstance=1 callReference=16777368.|<CLID::MCS-7822-SERVER-Cluster>  
<NID::172.16.240.124><CT::1,100,48,1.297><IP::172.16.15.129><DEV::> 01/24/2009 19:05:46.573  
Cisco CallManager|StationD::star\_StationOutputCallInfo(): callInfo: CI=16777368,  
**CallingPartyName=, CallingParty=2000, CalledPartyName=, CalledParty=82012,**  
OriginalCalledPartyName=, OriginalCalledParty=, lastRedirectingPartyName=,  
lastRedirectingParty=|<CLID::MCS-7822-SERVER-  
Cluster><NID::172.16.240.124><CT::1,100,48,1.297><IP::172.16.15.129><DEV::> 01/24/2009  
19:05:46.573 Cisco CallManager|StationD: 4b16420 SelectSoftKeysinstance=1 reference=16777368  
softKeySetIndex=1 validKeyMask=-1.|<CLID::MCS-7822-SERVER-  
Cluster><NID::172.16.240.124><CT::1,100,48,1.297><IP::172.16.15.129><DEV::> 01/24/2009  
19:05:46.573 Cisco CallManager|StationD: 4b16420 DisplayPromptStatus timeOutValue=0  
promptStatus='Connected' lineInstance=1 callReference=16777368.|<CLID::MCS-7822-SERVER-  
Cluster><NID::172.16.240.124><CT::1,100,48,1.297><IP::172.16.15.129><DEV::> 01/24/2009  
19:05:51.280 Cisco CallManager|MGCPHandler received msg from: 172.16.15.129 **NTFY 86 \*@AV-2620-4  
MGCP 0.1 X: 0 O: |**<CLID::MCS-7822-SERVER-  
Cluster><NID::172.16.240.124><CT::1,100,50,1.40792><IP::172.16.15.129><DEV::> 01/24/2009  
19:05:51.280 Cisco CallManager|<CLID::MCS-7822-SERVER-  
Cluster><NID::172.16.240.124><CT::1,100,50,1.40792><MN::MGCPendPoint><MV::\*@AV-2620-4><DEV::>



wait\_AuDisconnectReply|<CLID::MCS-7822-SERVER-Cluster>  
<NID::172.16.240.124><CT::1,100,50,1.40793><IP::172.16.15.129><DEV::S0/SU2/ds1-0@AV-2620-4>  
01/24/2009 19:05:53.403 Cisco CallManager|MediaCoordinator - wait\_AuDisconnectReply - removing  
MediaManager(25) from connection list|<CLID::MCS-7822-SERVER-  
Cluster><NID::172.16.240.124><CT::1,100,50,1.40793><IP::172.16.15.129><DEV::S0/SU2/ds1-0@AV-  
2620-4> 01/24/2009 19:05:53.403 Cisco CallManager|ConnectionManager -  
wait\_AuDisconnectReply(16777369,16777368): STOP SESSION|<CLID::MCS-7822-SERVER-  
Cluster><NID::172.16.240.124><CT::1,100,50,1.40793><IP::172.16.15.129><DEV::S0/SU2/ds1-0@AV-  
2620-4> 01/24/2009 19:05:53.403 Cisco CallManager|ConnectionManager -  
deleteMediaInfoEntry(16777369): ENTRY DELETED, tail == 1|<CLID::MCS-7822-SERVER-  
Cluster><NID::172.16.240.124><CT::1,100,50,1.40793><IP::172.16.15.129><DEV::S0/SU2/ds1-0@AV-  
2620-4> 01/24/2009 19:05:53.403 Cisco CallManager|ConnectionManager -  
deleteMediaInfoEntry(16777368): ENTRY DELETED, tail == 0|<CLID::MCS-7822-SERVER-  
Cluster><NID::172.16.240.124><CT::1,100,50,1.40793><IP::172.16.15.129><DEV::S0/SU2/ds1-0@AV-  
2620-4> 01/24/2009 19:05:53.403 Cisco CallManager| |<CLID::MCS-7822-SERVER-  
Cluster><NID::172.16.240.124> 01/24/2009 19:05:53.403 Cisco **CallManager|Out Message --  
PriReleaseMsg -- Protocol= PriNi2Protocol**|<CLID::MCS-7822-SERVER-Cluster><NID::172.16.240.124>  
01/24/2009 19:05:53.403 Cisco CallManager|MMan\_Id= 0. (iep= 0 dsl= 100 sapi= 0 ces= 0  
IpAddr=810f10ac IpPort=2427)|<CLID::MCS-7822-SERVER-Cluster><NID::172.16.240.124> 01/24/2009  
19:05:53.403 Cisco CallManager|IsdnMsgData2= 08 02 00 01 4D |<CLID::MCS-7822-SERVER-  
Cluster><NID::172.16.240.124> 01/24/2009 19:05:53.403 Cisco CallManager|MGCpbHandler - Sending  
BhHdr:0004 0000 0010 0100 0001 0005 |<CLID::MCS-7822-SERVER-Cluster>  
<NID::172.16.240.124><CT::1,100,50,1.40793><IP::172.16.15.129><DEV::S0/SU2/ds1-0@AV-2620-4>  
01/24/2009 19:05:53.413 Cisco CallManager|<CLID::MCS-7822-SERVER-  
Cluster><NID::172.16.240.124><CT::1,100,50,1.40793><MN::Directory  
Number><MV::2000><DEV::S0/SU2/ds1-0@AV-2620-4> 01/24/2009 19:05:53.413 Cisco CallManager|CTI:  
RoutePatternToCtiCommandData::findValue() : RP=2000:, bRc=0, T=, #entries=0|<CLID::MCS-7822-  
SERVER-Cluster><NID::172.16.240.124> 01/24/2009 19:05:53.413 Cisco CallManager|CTI:  
RoutePatternToCtiCommandData::findValue() : RP=2000:, bRc=0, T=, #entries=0|<CLID::MCS-7822-  
SERVER-Cluster><NID::172.16.240.124> 01/24/2009 19:05:53.413 Cisco CallManager|StationCdpc -  
INFO: clearType=0,mHoldFlag=0, mMediaConnFlag=1.|<CLID::MCS-7822-SERVER-Cluster>  
<NID::172.16.240.124><CT::1,100,50,1.40793><IP::172.16.15.129><DEV::S0/SU2/ds1-0@AV-2620-4>  
01/24/2009 19:05:53.413 **Cisco CallManager|StationCdpc - INFO: NormalClear.**|<CLID::MCS-7822-  
SERVER-Cluster><NID::172.16.240.124><CT::1,100,50,1.40793><IP::172.16.15.129><DEV::S0/SU2/ds1-  
0@AV-2620-4> 01/24/2009 19:05:53.413 Cisco CallManager|StationD: 4b16420  
DefineTimeDatetimeDateInfo=? systemTime=1018663553.|<CLID::MCS-7822-SERVER-Cluster>  
<NID::172.16.240.124><CT::1,100,50,1.40793><IP::172.16.15.129><DEV::S0/SU2/ds1-0@AV-2620-4>  
01/24/2009 19:05:53.413 Cisco CallManager|StationD: 4b16420 SetSpeakerMode  
speakermode=2(Off).|<CLID::MCS-7822-SERVER-  
Cluster><NID::172.16.240.124><CT::1,100,50,1.40793><IP::172.16.15.129><DEV::S0/SU2/ds1-0@AV-  
2620-4> 01/24/2009 19:05:53.413 Cisco CallManager|StationD: 4b16420 ClearPromptStatus  
lineInstance=1 callReference=16777368.|<CLID::MCS-7822-SERVER-  
Cluster><NID::172.16.240.124><CT::1,100,50,1.40793><IP::172.16.15.129><DEV::S0/SU2/ds1-0@AV-  
2620-4> 01/24/2009 19:05:53.413 Cisco **CallManager|StationD: 4b16420 CallState  
callState=2(OnHook)** lineInstance=1 callReference=16777368|<CLID::MCS-7822-SERVER-  
Cluster><NID::172.16.240.124><CT::1,100,50,1.40793><IP::172.16.15.129><DEV::S0/SU2/ds1-0@AV-  
2620-4> 01/24/2009 19:05:53.413 Cisco CallManager|StationD: 4b16420 SelectSoftKeys instance=0  
reference=0 softKeySetIndex=0 validKeyMask=7.|<CLID::MCS-7822-SERVER-  
Cluster><NID::172.16.240.124><CT::1,100,50,1.40793><IP::172.16.15.129><DEV::S0/SU2/ds1-0@AV-  
2620-4> 01/24/2009 19:05:53.413 Cisco CallManager|StationD: 4b16420 DisplayPromptStatus  
timeOutValue=0 promptStatus='Your current options' lineInstance=0 callReference=0.|<CLID::MCS-  
7822-SERVER-Cluster>  
<NID::172.16.240.124><CT::1,100,50,1.40793><IP::172.16.15.129><DEV::S0/SU2/ds1-0@AV-2620-4>  
01/24/2009 19:05:53.413 Cisco CallManager|StationD: 4b16420 ActivateCallPlane  
lineInstance=0.|<CLID::MCS-7822-SERVER-  
Cluster><NID::172.16.240.124><CT::1,100,50,1.40793><IP::172.16.15.129><DEV::S0/SU2/ds1-0@AV-  
2620-4> 01/24/2009 19:05:53.413 Cisco CallManager|StationD: 4b16420 SetLampstimulus=9(Line)  
stimulusInstance=1 lampMode=1(LampOff).|<CLID::MCS-7822-SERVER-  
Cluster><NID::172.16.240.124><CT::1,100,50,1.40793><IP::172.16.15.129><DEV::S0/SU2/ds1-0@AV-  
2620-4> 01/24/2009 19:05:53.413 Cisco CallManager|StationD: 4b16420 DefineTimeDatetimeDateInfo=?  
systemTime=1018663553.|<CLID::MCS-7822-SERVER-Cluster><NID::172.16.240.124>  
<CT::1,100,50,1.40793><IP::172.16.15.129><DEV::S0/SU2/ds1-0@AV-2620-4> 01/24/2009 19:05:53.413  
Cisco CallManager|StationD: 4b16420 StopTone.|<CLID::MCS-7822-SERVER-  
Cluster><NID::172.16.240.124><CT::1,100,50,1.40793><IP::172.16.15.129><DEV::S0/SU2/ds1-0@AV-



```
172.16.240.124 ---> *Mar 1 00:35:33.831: 250 341 P:
PS=483, OS=77280, PR=481, OR=76960, PL=0,JI=512, LA=0 <-
-- *Mar 1 00:35:42.955: send_mgcp_msg, MGCP Packet sent
to 172.16.240.124 ---> *Mar 1 00:35:42.955: NTFY 140
*@AV-2620-4 MGCP 0.1 X: 0 O: <--- *Mar 1 00:35:42.967:
MGCP Packet received from 172.16.240.124- 200 140 AV-
2620-4# *Mar 1 00:35:57.955: send_mgcp_msg, MGCP Packet
sent to 172.16.240.124 ---> *Mar 1 00:35:57.955: NTFY
141 *@AV-2620-4 MGCP 0.1 X: 0 O: <--- *Mar 1
00:35:57.967: MGCP Packet received from 172.16.240.124-
200 141
```

## [呼入呼叫的Debug输出从PSTN](#)

### Cisco CallManager 跟踪

```
01/24/2009 19:09:19.644 Cisco CallManager|In Message -- PriSetupMsg --
Protocol=PriNi2Protocol|<CLID::MCS-7822-SERVER-Cluster><NID::172.16.240.124> 01/24/2009
19:09:19.644 Cisco CallManager|Ie - Ni2BearerCapabilityIe --IEData= 04 03 80 90 A2 |<CLID::MCS-
7822-SERVER-Cluster><NID::172.16.240.124> 01/24/2009 19:09:19.644 Cisco CallManager|Ie -
Q931ChannelIdIe -- IEData= 18 03 A9 83 17 |<CLID::MCS-7822-SERVER-Cluster><NID::172.16.240.124>
01/24/2009 19:09:19.644 Cisco CallManager|Ie - Q931CallingPartyIe -- IEData= 6C 06 00 81 32 30
31 32 |<CLID::MCS-7822-SERVER-Cluster><NID::172.16.240.124> 01/24/2009 19:09:19.644 Cisco
CallManager|Ie - Q931CalledPartyIe -- IEData= 70 05 80 32 30 30 30 |<CLID::MCS-7822-SERVER-
Cluster><NID::172.16.240.124> 01/24/2009 19:09:19.644 Cisco CallManager|MMan_Id= 0. (iep= 0 dsl=
100 sapi= 0 ces= 0 IpAddr=810f10ac IpPort=2427)|<CLID::MCS-7822-SERVER-
Cluster><NID::172.16.240.124> 01/24/2009 19:09:19.644 Cisco CallManager|IsdnMsgData1= 08 02 00
08 05 04 03 80 90 A2 18 03 A9 83 17 6C 06 00 81 32 30 31 32 70 05 80 32 30 3030 |<CLID::MCS-
7822-SERVER-Cluster><NID::172.16.240.124> 01/24/2009 19:09:19.674 Cisco CallManager|MGCPpn9d -
initPortInfo: portInfo[22] endpoint=S0/SU2/ds1-0/23@AV-2620-4, ci=16777370|<CLID::MCS-7822-
SERVER-Cluster><NID::172.16.240.124><CT::1,100,48,1.300><IP::172.16.15.129><DEV::> 01/24/2009
19:09:19.684 Cisco CallManager|Insert an entry into CiCcp table, now this table has 1
entries|<CLID::MCS-7822-SERVER-Cluster>
<NID::172.16.240.124><CT::1,100,48,1.300><IP::172.16.15.129><DEV::> 01/24/2009 19:09:19.684
Cisco CallManager|Insert an entry into CiCcptable, now this table has 2 entries|<CLID::MCS-7822-
SERVER-Cluster> <NID::172.16.240.124><CT::1,100,48,1.300><IP::172.16.15.129><DEV::> 01/24/2009
19:09:19.684 Cisco CallManager|Digit analysis: match(fqcn="", cn="2012", pss="",
dd="2000")|<CLID::MCS-7822-SERVER-
Cluster><NID::172.16.240.124><CT::1,100,48,1.300><IP::172.16.15.129><DEV::> 01/24/2009
19:09:19.684 Cisco CallManager|Digit analysis: analysis results|<CLID::MCS-7822-SERVER-
Cluster><NID::172.16.240.124><CT::1,100,48,1.300><IP::172.16.15.129><DEV::> 01/24/2009
19:09:19.684 Cisco CallManager||PretransformCallingPartyNumber=2012 |CallingPartyNumber=2012
|DialingPartition= |DialingPattern=2000 |DialingRoutePatternRegularExpression=(2000)
|DialingWhere= |PatternType=Enterprise |PotentialMatches=NoPotentialMatchesExist
|DialingSdlProcessId=(1,34,5) |PretransformDigitString=2000 |PretransformTagsList=SUBSCRIBER
|PretransformPositionalMatchList=2000 |CollectedDigits=2000 |UnconsumedDigits=
|TagsList=SUBSCRIBER |PositionalMatchList=2000 |VoiceMailbox=2000 |DisplayName=
|RouteBlockFlag=RouteThisPattern |InterceptPartition= |InterceptPattern= |InterceptWhere=
|InterceptSdlProcessId=(0,0,0) |InterceptSsType=0 |InterceptSsKey=0|<CLID::MCS-7822-SERVER-
Cluster><NID::172.16.240.124><CT::1,100,48,1.300><IP::172.16.15.129><DEV::> 01/24/2009
19:09:19.684 Cisco CallManager|<CLID::MCS-7822-SERVER-
Cluster><NID::172.16.240.124><CT::1,100,48,1.300><MN::Directory Number><MV::2000><DEV::>
01/24/2009 19:09:19.684 Cisco CallManager|Locations: reserve: cdccPID=(1.13.78) Orig=Dest=0 no
need to reserve bw.|<CLID::MCS-7822-SERVER-Cluster><NID::172.16.240.124> 01/24/2009 19:09:19.694
Cisco CallManager|StationD: 4b16420 DisplayText text=' 2000 '.|<CLID::MCS-7822-SERVER-
Cluster><NID::172.16.240.124><CT::1,100,48,1.300><IP::172.16.15.129><DEV::> 01/24/2009
19:09:19.694 Cisco CallManager|StationD: 4b16420 CallState callState=4(RingIn)lineInstance=1
callReference=16777371|<CLID::MCS-7822-SERVER-
Cluster><NID::172.16.240.124><CT::1,100,48,1.300><IP::172.16.15.129><DEV::> 01/24/2009
19:09:19.694 Cisco CallManager|StationD: 4b16420 CallInfo callingPartyName='' callingParty=2012
cgpnVoiceMailbox= calledPartyName='' calledParty=2000
cdpnVoiceMailbox=2000originalCalledPartyName=''
```



originalCalledParty=2000originalCdpnVoiceMailbox=2000 originalCdpnRedirectReason=0  
lastRedirectingPartyName='' lastRedirectingParty=2000 lastRedirectingVoiceMailbox=2000  
lastRedirectingReason=0 callType=1(InBound) lineInstance=1 callReference=16777371.|<CLID::MCS-  
7822-SERVER-Cluster><NID::172.16.240.124><CT::1,100,48,1.300><IP::172.16.15.129><DEV::>  
01/24/2009 19:09:19.694 Cisco CallManager|StationD::star\_StationOutputCallInfo():  
callInfo:CI=16777371, CallingPartyName=, CallingParty=2012, CalledPartyName=, CalledParty=2000,  
OriginalCalledPartyName=, OriginalCalledParty=2000,lastRedirectingPartyName=,  
lastRedirectingParty=|<CLID::MCS-7822-SERVER-  
Cluster><NID::172.16.240.124><CT::1,100,48,1.300><IP::172.16.15.129><DEV::> 01/24/2009  
19:09:19.694 Cisco CallManager|StationD: 4b16420 SetLamp stimulus=9(Line) stimulusInstance=1  
lampMode=5(LampBlink).|<CLID::MCS-7822-SERVER-  
Cluster><NID::172.16.240.124><CT::1,100,48,1.300><IP::172.16.15.129><DEV::> 01/24/2009  
19:09:19.694 Cisco CallManager|StationD: 4b16420 SetRingerringMode=3(OutsideRing).|<CLID::MCS-  
7822-SERVER-Cluster> <NID::172.16.240.124><CT::1,100,48,1.300><IP::172.16.15.129><DEV::>  
01/24/2009 19:09:19.694 Cisco CallManager|StationD: 4b16420 DisplayPromptStatus timeOutValue=0  
promptStatus='From 2012' lineInstance=1 callReference=16777371.|<CLID::MCS-7822-SERVER-  
Cluster><NID::172.16.240.124><CT::1,100,48,1.300><IP::172.16.15.129><DEV::> 01/24/2009  
19:09:19.694 Cisco CallManager|StationD: 4b16420 SelectSoftKeys instance=1 reference=16777371  
softKeySetIndex=3 validKeyMask=-1.|<CLID::MCS-7822-SERVER-  
Cluster><NID::172.16.240.124><CT::1,100,48,1.300><IP::172.16.15.129><DEV::> 01/24/2009  
19:09:19.724 Cisco CallManager|MGCPHandler send msg SUCCESSFULLY to: 172.16.15.129 **CRCX 330**  
**S0/SU2/ds1-0/23@AV-2620-4 MGCP 0.1** C: D00000000100009a0000000080000008 M: inactive |<CLID::MCS-  
7822-SERVER-Cluster><NID::172.16.240.124><CT::1,100,48,1.300><IP::172.16.15.129><DEV::>  
01/24/2009 19:09:19.764 Cisco CallManager|MGCPHandler received msg from: 172.16.15.129 200 330  
I: 3 v=0 c=IN IP4 172.16.15.129 m=audio 16476 RTP/AVP 0 8 96 97 98 2 99 18 a=rtpmap:96  
G.729a/8000/1 a=rtpmap:97 G.726-16/8000/1 a=rtpmap:98 G.726-24/8000/1 a=rtpmap:99 G.729b/8000/1  
|<CLID::MCS-7822-SERVER-  
Cluster><NID::172.16.240.124><CT::1,100,50,1.40808><IP::172.16.15.129><DEV::> 01/24/2009  
19:09:19.764 Cisco CallManager|MGCPHandler received RESP header w/ transId= 330|<CLID::MCS-7822-  
SERVER-Cluster><NID::172.16.240.124><CT::1,100,50,1.40808><IP::172.16.15.129><DEV::> 01/24/2009  
19:09:19.764 Cisco CallManager|<CLID::MCS-7822-SERVER-  
Cluster><NID::172.16.240.124><CT::1,100,50,1.40808><MN::MGCP endPoint><MV::S0/SU2/ds1-0/23@AV-  
2620-4><DEV::S0/SU2/ds1-0@AV-2620-4> 01/24/2009 19:09:19.764 Cisco CallManager|MGCPHandler  
received RESP header w/ transId= 330 FOUND a match for CRCX|<CLID::MCS-7822-SERVER-  
Cluster><NID::172.16.240.124><CT::1,100,50,1.40808><IP::172.16.15.129><DEV::S0/SU2/ds1-0@AV-  
2620-4> 01/24/2009 19:09:19.764 **Cisco CallManager|MGCPHandler recv CRCX Ack with RTP PortNum:  
16476**|<CLID::MCS-7822-SERVER-  
Cluster><NID::172.16.240.124><CT::1,100,50,1.40808><IP::172.16.15.129><DEV::S0/SU2/ds1-0@AV-  
2620-4> 01/24/2009 19:09:19.774 Cisco CallManager| |<CLID::MCS-7822-SERVER-  
Cluster><NID::172.16.240.124> 01/24/2009 19:09:19.774 **Cisco CallManager|Out Message --  
PriCallProceedingMsg -- Protocol= PriNi2Protocol**|<CLID::MCS-7822-SERVER-  
Cluster><NID::172.16.240.124> 01/24/2009 19:09:19.774 Cisco CallManager|Ie - Q931ChannelIdIe  
IEData=18 03 A9 83 97 |<CLID::MCS-7822-SERVER-Cluster><NID::172.16.240.124>01/24/2009  
19:09:19.774 Cisco CallManager|MMan\_Id= 0. (iep= 0 dsl= 100sapi= 0 ces= 0 IpAddr=810f10ac  
IpPort=2427)|<CLID::MCS-7822-SERVER-Cluster><NID::172.16.240.124> 01/24/2009 19:09:19.774 Cisco  
CallManager|IsdnMsgData2= 08 02 80 08 0218 03 A9 83 97 |<CLID::MCS-7822-SERVER-  
Cluster><NID::172.16.240.124> 01/24/2009 19:09:19.774 Cisco CallManager|MGCPBhHandler - Sending  
BhHdr: 0004 0000 0010 0100 0001 000a |<CLID::MCS-7822-SERVER-Cluster>  
<NID::172.16.240.124><CT::1,100,48,1.300><IP::172.16.15.129><DEV::> 01/24/2009 19:09:19.774  
Cisco CallManager| |<CLID::MCS-7822-SERVER-Cluster><NID::172.16.240.124> 01/24/2009 19:09:19.774  
**Cisco CallManager|Out Message -- PriAlertingMsg -- Protocol= PriNi2Protocol**|<CLID::MCS-7822-  
SERVER-Cluster><NID::172.16.240.124> 01/24/2009 19:09:19.774 **Cisco CallManager|Ie -  
Q931ProgressIndIeIEData= 1E 02 80 88** |<CLID::MCS-7822-SERVER-Cluster> <NID::172.16.240.124>  
01/24/2009 19:09:19.774 Cisco CallManager|MMan\_Id= 0. (iep= 0 dsl=100 sapi= 0 ces= 0  
IpAddr=810f10ac IpPort=2427)|<CLID::MCS-7822-SERVER-Cluster><NID::172.16.240.124> 01/24/2009  
19:09:19.774 Cisco CallManager|IsdnMsgData2= 08 02 80 08 011E 02 80 88 |<CLID::MCS-7822-SERVER-  
Cluster><NID::172.16.240.124> 01/24/2009 19:09:19.774 Cisco CallManager|MGCPBhHandler - Sending  
BhHdr: 0004 0000 0010 0100 0001 0009 |<CLID::MCS-7822-SERVER-Cluster>  
<NID::172.16.240.124><CT::1,100,48,1.300><IP::172.16.15.129><DEV::> 01/24/2009 19:09:19.774  
Cisco CallManager|MGCPHandler send msg SUCCESSFULLY to: 172.16.15.129 **RQNT 331 S0/SU2/ds1-  
0/23@AV-2620-4 MGCP 0.1** X: 17 S: G/rt |<CLID::MCS-7822-SERVER-  
Cluster><NID::172.16.240.124><CT::1,100,48,1.300><IP::172.16.15.129><DEV::> 01/24/2009  
19:09:19.795 Cisco CallManager|MGCPHandler received msg from: 172.16.15.129 200 331 OK  
|<CLID::MCS-7822-SERVER-

Cluster><NID::172.16.240.124><CT::1,100,50,1.40809><IP::172.16.15.129><DEV::> 01/24/2009  
19:09:19.795 Cisco CallManager|MGCPHandler received RESP header w/ transId= 331|<CLID::MCS-7822-  
SERVER-Cluster> <NID::172.16.240.124><CT::1,100,50,1.40809><IP::172.16.15.129><DEV::> 01/24/2009  
19:09:19.795 Cisco CallManager|<CLID::MCS-7822-SERVER-  
Cluster><NID::172.16.240.124><CT::1,100,50,1.40809><MN::MGCPEndPoint><MV::S0/SU2/ds1-0/23@AV-  
2620-4><DEV::S0/SU2/ds1-0@AV-2620-4> 01/24/2009 19:09:19.795 Cisco CallManager|MGCPHandler  
received RESP header w/ transId= 331 FOUND a match for RQNT|<CLID::MCS-7822-SERVER-  
Cluster><NID::172.16.240.124><CT::1,100,50,1.40809><IP::172.16.15.129><DEV::S0/SU2/ds1-0@AV-  
2620-4> 01/24/2009 19:09:19.795 Cisco CallManager|MGCPHandler recv RQNT Ack from  
**172.16.15.129**|<CLID::MCS-7822-SERVER-  
Cluster><NID::172.16.240.124><CT::1,100,50,1.40809><IP::172.16.15.129><DEV::S0/SU2/ds1-0@AV-  
2620-4> 01/24/2009 19:09:21.287 Cisco CallManager|MGCPManager remove recentIncoming transId  
98|<CLID::MCS-7822-SERVER-Cluster>  
<NID::172.16.240.124><CT::1,100,50,1.40806><IP::172.16.15.129><DEV::> 01/24/2009 19:09:24.852  
**Cisco CallManager|StationInit: 4b16420 OffHook.**|<CLID::MCS-7822-SERVER-  
Cluster><NID::172.16.240.124><CT::1,100,95,1.102463><IP::172.16.240.126><DEV::SEP003094C2856E>  
01/24/2009 19:09:24.852 Cisco CallManager|StationD: 4b16420 ClearNotify.|<CLID::MCS-7822-SERVER-  
Cluster><NID::172.16.240.124> <CT::1,100,95,1.102463><IP::172.16.240.126><DEV::SEP003094C2856E>  
01/24/2009 19:09:24.852 **Cisco CallManager|StationD: 4b16420**  
**SetRingerringMode=1(RingOff).**|<CLID::MCS-7822-SERVER-Cluster>  
<NID::172.16.240.124><CT::1,100,95,1.102463><IP::172.16.240.126><DEV::SEP003094C2856E>  
01/24/2009 19:09:24.852 Cisco CallManager|StationD: 4b16420 SetLampstimulus=9(Line)  
stimulusInstance=1 lampMode=2(LampOn).|<CLID::MCS-7822-SERVER-  
Cluster><NID::172.16.240.124><CT::1,100,95,1.102463><IP::172.16.240.126><DEV::SEP003094C2856E>  
01/24/2009 19:09:24.862 **Cisco CallManager|StationD: 4b16420 CallStatecallState=1(OffHook)**  
lineInstance=1 callReference=16777371|<CLID::MCS-7822-SERVER-  
Cluster><NID::172.16.240.124><CT::1,100,95,1.102463><IP::172.16.240.126><DEV::SEP003094C2856E>  
01/24/2009 19:09:24.862 **Cisco CallManager|StationD: 4b16420 ActivateCallPlane**  
lineInstance=1.|<CLID::MCS-7822-SERVER-  
Cluster><NID::172.16.240.124><CT::1,100,95,1.102463><IP::172.16.240.126><DEV::SEP003094C2856E>  
01/24/2009 19:09:24.862 Cisco CallManager|ConnectionManager -  
wait\_AuConnectRequest(16777370,16777371): INFORM MEDIA LAYER|<CLID::MCS-7822-SERVER-  
Cluster><NID::172.16.240.124><CT::1,100,95,1.102463><IP::172.16.240.126><DEV::SEP003094C2856E>  
01/24/2009 19:09:24.862 Cisco CallManager|ConnectionManager - storeMediaInfo(16777370): ADD NEW  
ENTRY, tail == 1|<CLID::MCS-7822-SERVER-Cluster><NID::172.16.240.124><CT::1,100,95,1.102463>  
<IP::172.16.240.126><DEV::SEP003094C2856E> 01/24/2009 19:09:24.862 Cisco  
CallManager|ConnectionManager - storeMediaInfo(16777371): ADD NEW ENTRY, tail == 2|<CLID::MCS-  
7822-SERVER-Cluster>  
<NID::172.16.240.124><CT::1,100,95,1.102463><IP::172.16.240.126><DEV::SEP003094C2856E>  
01/24/2009 19:09:24.862 Cisco CallManager|MediaCoordinator - wait\_AuConnectRequest()|<CLID::MCS-  
7822-SERVER-  
Cluster><NID::172.16.240.124><CT::1,100,95,1.102463><IP::172.16.240.126><DEV::SEP003094C2856E>  
01/24/2009 19:09:24.862 Cisco CallManager|MediaCoordinator - wait\_AuConnectRequest - starting  
MediaManager w/ existing (0) connections|<CLID::MCS-7822-SERVER-  
Cluster><NID::172.16.240.124><CT::1,100,95,1.102463><IP::172.16.240.126><DEV::SEP003094C2856E>  
01/24/2009 19:09:24.862 Cisco CallManager|MediaCoordinator - wait\_AuConnectRequest - new  
MediaManager(40,26) started|<CLID::MCS-7822-SERVER-  
Cluster><NID::172.16.240.124><CT::1,100,95,1.102463><IP::172.16.240.126><DEV::SEP003094C2856E>  
01/24/2009 19:09:24.872 Cisco CallManager|MediaManager(26) started|<CLID::MCS-7822-SERVER-  
Cluster><NID::172.16.240.124><CT::1,100,40,26.1><IP::><DEV::> 01/24/2009 19:09:24.872 Cisco  
CallManager|MediaManager - wait\_AuConnectRequest|<CLID::MCS-7822-SERVER-Cluster>  
<NID::172.16.240.124><CT::1,100,95,1.102463><IP::172.16.240.126><DEV::SEP003094C2856E>  
01/24/2009 19:09:24.872 Cisco CallManager|MediaManager - wait\_AuConnectRequest - normal  
connection|<CLID::MCS-7822-SERVER-  
Cluster><NID::172.16.240.124><CT::1,100,95,1.102463><IP::172.16.240.126><DEV::SEP003094C2856E>  
01/24/2009 19:09:24.872 Cisco CallManager|MediaManager -wait\_AuConnectReply|<CLID::MCS-7822-  
SERVER-Cluster><NID::172.16.240.124><CT::1,100,8,27.1><IP::><DEV::> 01/24/2009 19:09:24.872  
Cisco CallManager|MediaManager -wait\_AuConnectReply - received 1 responses, forwarding reply for  
party1(16777370) and party2(16777371)|<CLID::MCS-7822-SERVER-Cluster>  
<NID::172.16.240.124><CT::1,100,8,27.1><IP::><DEV::> 01/24/2009 19:09:24.872 Cisco  
CallManager|MediaCoordinator - wait\_AuConnectReply|<CLID::MCS-7822-SERVER-Cluster>  
<NID::172.16.240.124><CT::1,100,8,27.1><IP::><DEV::> 01/24/2009 19:09:24.872 Cisco  
CallManager|ConnectionManager - wait\_AuConnectReply(16777370,16777371)|<CLID::MCS-7822-SERVER-  
Cluster><NID::172.16.240.124><CT::1,100,8,27.1><IP::><DEV::> 01/24/2009 19:09:24.882 **Cisco**

CallManager|StationD: 4b16420 StopTone. |<CLID::MCS-7822-SERVER-Cluster><NID::172.16.240.124><CT::1,100,8,27.1><IP::><DEV::> 01/24/2009 19:09:24.882 Cisco  
CallManager|StationD: 4b16420 OpenReceiveChannel conferenceID=0 passThruPartyID=433  
millisecondPacketSize=20 compressionType=4(Media\_Payload\_G711Ulaw64k) qualifierIn=?. myIP: 7ef010ac (172.16.240.126) |<CLID::MCS-7822-SERVER-Cluster><NID::172.16.240.124><CT::1,100,8,27.1><IP::><DEV::> 01/24/2009 19:09:24.882 Cisco  
CallManager|MGCPHandler send msg SUCCESSFULLY to: 172.16.15.129 MDCX 332 S0/SU2/ds1-0/23@AV-2620-4 MGCP 0.1 C: D0000000100009a0000000080000008 I: 3 X: 17 L: p:20, a:PCMU, s:off M: recvonly R: D/[0-9ABCD\*#] Q: process,loop |<CLID::MCS-7822-SERVER-Cluster><NID::172.16.240.124><CT::1,100,52,23.1><IP::><DEV::> 01/24/2009 19:09:24.882 Cisco  
CallManager| |<CLID::MCS-7822-SERVER-Cluster><NID::172.16.240.124> 01/24/2009 19:09:24.882 Cisco  
CallManager|Out Message -- PriConnectMsg-- Protocol= PriNi2Protocol |<CLID::MCS-7822-SERVER-Cluster><NID::172.16.240.124> 01/24/2009 19:09:24.882 Cisco CallManager|MMan\_Id= 0. (iep= 0 dsl= 100sapi= 0 ces= 0 IpAddr=810f10ac IpPort=2427) |<CLID::MCS-7822-SERVER-Cluster><NID::172.16.240.124> 01/24/2009 19:09:24.882 Cisco CallManager|IsdnMsgData2= 08 02 80 08 07 |<CLID::MCS-7822-SERVER-Cluster><NID::172.16.240.124> 01/24/2009 19:09:24.882 Cisco  
CallManager|MGCPBhHandler - Sending BhHdr: 0004 0000 0010 0100 0001 0005 |<CLID::MCS-7822-SERVER-Cluster> <NID::172.16.240.124><CT::1,100,8,27.1><IP::><DEV::> 01/24/2009 19:09:24.882  
Cisco CallManager|StationD: 4b16420 StopTone. |<CLID::MCS-7822-SERVER-Cluster><NID::172.16.240.124><CT::1,100,8,27.1><IP::><DEV::> 01/24/2009 19:09:24.882 Cisco  
CallManager|StationD: 4b16420 CallState callState=5(Connected) lineInstance=1  
callReference=16777371 |<CLID::MCS-7822-SERVER-Cluster><NID::172.16.240.124><CT::1,100,8,27.1><IP::><DEV::> 01/24/2009 19:09:24.882 Cisco  
CallManager|StationD: 4b16420 CallInfo callingPartyName='' callingParty=2012 cgnpVoiceMailbox= calledPartyName='' calledParty=2000 cdpnVoiceMailbox=2000  
originalCalledPartyName='' originalCalledParty=2000 originalCdpnVoiceMailbox=2000  
originalCdpnRedirectReason=0 lastRedirectingPartyName='' lastRedirectingParty=2000  
lastRedirectingVoiceMailbox=2000 lastRedirectingReason=0 callType=1(InBound) lineInstance=1  
callReference=16777371. |<CLID::MCS-7822-SERVER-Cluster><NID::172.16.240.124><CT::1,100,8,27.1><IP::><DEV::> 01/24/2009 19:09:24.882 Cisco  
CallManager|StationD::star\_StationOutputCallInfo(): callInfo: CI=16777371, CallingPartyName=, CallingParty=2012, CalledPartyName=, CalledParty=2000, OriginalCalledPartyName=, OriginalCalledParty=2000, lastRedirectingPartyName=, lastRedirectingParty= |<CLID::MCS-7822-SERVER-Cluster><NID::172.16.240.124><CT::1,100,8,27.1><IP::><DEV::> 01/24/2009 19:09:24.882  
Cisco CallManager|StationD: 4b16420 SelectSoftKeys instance=1 reference=16777371  
softKeySetIndex=1 validKeyMask=-1. |<CLID::MCS-7822-SERVER-Cluster><NID::172.16.240.124><CT::1,100,8,27.1><IP::><DEV::> 01/24/2009 19:09:24.882 Cisco  
CallManager|StationD: 4b16420 DisplayPromptStatus timeOutValue=0 promptStatus='Connected'  
lineInstance=1 callReference=16777371. |<CLID::MCS-7822-SERVER-Cluster>  
<NID::172.16.240.124><CT::1,100,8,27.1><IP::><DEV::> 01/24/2009 19:09:24.882 Cisco  
CallManager|StationInit: 4b16420 OpenReceiveChannelAck Status=0, IpAddr=0x7ef010ac, Port=22082,  
PartyID=433 |<CLID::MCS-7822-SERVER-Cluster><NID::172.16.240.124><CT::1,100,95,1.102464><IP::172.16.240.126><DEV::SEP003094C2856E>  
01/24/2009 19:09:24.912 Cisco CallManager|MGCPHandler received msg from:172.16.15.129 200 332 OK  
 |<CLID::MCS-7822-SERVER-Cluster><NID::172.16.240.124><CT::1,100,50,1.40810><IP::172.16.15.129><DEV::> 01/24/2009  
19:09:24.912 Cisco CallManager|MGCPHandler received RESP header w/ transId= 332 |<CLID::MCS-7822-SERVER-Cluster><NID::172.16.240.124><CT::1,100,50,1.40810><IP::172.16.15.129><DEV::> 01/24/2009  
19:09:24.912 Cisco CallManager|<CLID::MCS-7822-SERVER-Cluster><NID::172.16.240.124><CT::1,100,50,1.40810><MN::MGCPEndPoint><MV::S0/SU2/ds1-0/23@AV-2620-4><DEV::S0/SU2/ds1-0@AV-2620-4> 01/24/2009 19:09:24.912 Cisco CallManager|MGCPHandler  
received RESP headerw/ transId= 332 FOUND a match for MDCX |<CLID::MCS-7822-SERVER-Cluster>  
<NID::172.16.240.124><CT::1,100,50,1.40810><IP::172.16.15.129><DEV::S0/SU2/ds1-0@AV-2620-4>  
01/24/2009 19:09:24.912 Cisco CallManager|MGCPHandler send msg SUCCESSFULLYto: 172.16.15.129  
RQNT 333 S0/SU2/ds1-0/23@AV-2620-4 MGCP 0.1 X: 17 S: |<CLID::MCS-7822-SERVER-Cluster><NID::172.16.240.124><CT::1,100,8,27.1><IP::><DEV::> 01/24/2009 19:09:24.912 Cisco  
CallManager|MediaManager - wait\_AuConnectInfo |<CLID::MCS-7822-SERVER-Cluster><NID::172.16.240.124><CT::1,100,50,1.40810><IP::172.16.15.129><DEV::S0/SU2/ds1-0@AV-2620-4> 01/24/2009 19:09:24.912 Cisco CallManager|MediaManager - wait\_AuConnectInfo- received  
response, forwarding |<CLID::MCS-7822-SERVER-Cluster><NID::172.16.240.124><CT::1,100,50,1.40810><IP::172.16.15.129><DEV::S0/SU2/ds1-0@AV-2620-4> 01/24/2009 19:09:24.912 Cisco CallManager|MediaCoordinator -  
wait\_AuConnectInfoInd |<CLID::MCS-7822-SERVER-Cluster><NID::172.16.240.124>  
<CT::1,100,50,1.40810><IP::172.16.15.129><DEV::S0/SU2/ds1-0@AV-2620-4> 01/24/2009 19:09:24.912

Cisco CallManager|StationD: 4b16420 StartMediaTransmission conferenceID=0 passThruPartyID=433  
remoteIpAddress=810f10ac(172.16.15.129) remotePortNumber=16476milliSecondPacketSize=20  
compressType=4(Media\_Payload\_G711Ulaw64k) qualifierOut=?. myIP: 7ef010ac  
(172.16.240.126)|<CLID::MCS-7822-SERVER-Cluster><NID::172.16.240.124><CT::1,100,50,1.40810><IP::172.16.15.129><DEV::S0/SU2/ds1-0@AV-2620-4> 01/24/2009 19:09:24.912 Cisco CallManager|Locations: adjust: cdccPID=(1.13.78)  
Orig=Dest=0 no entry for cdcc. No need to adjust.|<CLID::MCS-7822-SERVER-Cluster><NID::172.16.240.124> 01/24/2009 19:09:24.922 Cisco CallManager|MGCPHandler received msg  
from:172.16.15.129 200 333 OK |<CLID::MCS-7822-SERVER-Cluster><NID::172.16.240.124><CT::1,100,50,1.40811><IP::172.16.15.129><DEV::> 01/24/2009  
19:09:24.922 Cisco CallManager|MGCPHandler received RESP headerw/ transId= 333|<CLID::MCS-7822-SERVER-Cluster><NID::172.16.240.124> <CT::1,100,50,1.40811><IP::172.16.15.129><DEV::> 01/24/2009  
19:09:24.922 Cisco CallManager|<CLID::MCS-7822-SERVER-Cluster><NID::172.16.240.124><CT::1,100,50,1.40811><MN::MGCPendPoint><MV::S0/SU2/ds1-0/23@AV-2620-4><DEV::S0/SU2/ds1-0@AV-2620-4> 01/24/2009 19:09:24.922 Cisco CallManager|MGCPHandler received  
RESP headerw/ transId= 333 FOUND a match for RQNT|<CLID::MCS-7822-SERVER-Cluster><NID::172.16.240.124><CT::1,100,50,1.40811><IP::172.16.15.129><DEV::S0/SU2/ds1-0@AV-2620-4>  
01/24/2009 19:09:24.922 Cisco CallManager|MGCPHandler recv RQNT Ack from  
172.16.15.129|<CLID::MCS-7822-SERVER-Cluster><NID::172.16.240.124><CT::1,100,50,1.40811><IP::172.16.15.129><DEV::S0/SU2/ds1-0@AV-2620-4> 01/24/2009 19:09:24.922 Cisco CallManager|MGCPHandler send msgSUCCESSFULLY to:  
172.16.15.129 MDCX 334 S0/SU2/ds1-0/23@AV-2620-4 MGCP 0.1 C: D00000000100009a0000000080000008 I:  
3 X: 17 L: p:20, a:PCMU, s:off M: sendrecv R: D/[0-9ABCD\*#] S: Q: process,loop v=0 o=- 3 0 IN  
EPN S0/SU2/ds1-0/23@AV-2620-4 s=Cisco SDP 0 t=0 0 c=IN IP4 172.16.240.126 m=audio 22082 RTP/AVP  
96 a=rtptime:96 PCMU |<CLID::MCS-7822-SERVER-Cluster><NID::172.16.240.124>  
<CT::1,100,95,1.102464><IP::172.16.240.126><DEV::SEP003094C2856E> 01/24/2009 19:09:24.932 Cisco  
CallManager|MGCPBhHandler 172.16.15.129 -TCP msg available from Device|<CLID::MCS-7822-SERVER-Cluster> <NID::172.16.240.124><CT::1,100,48,1.301><IP::172.16.15.129><DEV::> 01/24/2009  
19:09:24.932 Cisco CallManager|MGCPBhHandler - Receiving BhHdr: 0004 0000 0011 0100 0001 0005  
|<CLID::MCS-7822-SERVER-Cluster><NID::172.16.240.124><CT::1,100,48,1.301><IP::172.16.15.129><DEV::> 01/24/2009 19:09:24.932  
Cisco CallManager| |<CLID::MCS-7822-SERVER-Cluster><NID::172.16.240.124> 01/24/2009 19:09:24.932  
**Cisco CallManager|In Message -- PriConnectAcknowledgeMsg -- Protocol= PriNi2Protocol**|<CLID::MCS-7822-SERVER-Cluster><NID::172.16.240.124> 01/24/2009 19:09:24.932 Cisco CallManager|MMan\_Id= 0.  
(iep= 0 dsl=100 sapi= 0 ces= 0 IpAddr=810f10ac IpPort=2427)|<CLID::MCS-7822-SERVER-Cluster><NID::172.16.240.124> 01/24/2009 19:09:24.932 Cisco CallManager|IsdnMsgData1= 08 02 00  
08 0F |<CLID::MCS-7822-SERVER-Cluster><NID::172.16.240.124> 01/24/2009 19:09:24.962 Cisco  
CallManager|MGCPHandler received msg from: 172.16.15.129 200 334 OK |<CLID::MCS-7822-SERVER-Cluster><NID::172.16.240.124><CT::1,100,50,1.40812><IP::172.16.15.129><DEV::> 01/24/2009  
19:09:24.962 Cisco CallManager|MGCPHandler received RESP header w/ transId= 334|<CLID::MCS-7822-SERVER-Cluster><NID::172.16.240.124> <CT::1,100,50,1.40812><IP::172.16.15.129><DEV::> 01/24/2009  
19:09:24.962 Cisco CallManager|<CLID::MCS-7822-SERVER-Cluster><NID::172.16.240.124><CT::1,100,50,1.40812><MN::MGCPendPoint><MV::S0/SU2/ds1-0/23@AV-2620-4><DEV::S0/SU2/ds1-0@AV-2620-4> 01/24/2009 19:09:24.962 Cisco CallManager|MGCPHandler  
received RESP header w/ transId= 334 FOUND a match for MDCX|<CLID::MCS-7822-SERVER-Cluster><NID::172.16.240.124><CT::1,100,50,1.40812><IP::172.16.15.129><DEV::S0/SU2/ds1-0@AV-2620-4>  
01/24/2009 19:09:30.710 Cisco **CallManager|StationInit: 4b16420 OnHook.**|<CLID::MCS-7822-SERVER-Cluster><NID::172.16.240.124><CT::1,100,95,1.102467>  
<IP::172.16.240.126><DEV::SEP003094C2856E> 01/24/2009 19:09:30.710 Cisco CallManager|CTI:  
RoutePatternToCtiCommandData::findValue() : RP=2000:, bRc=0, T=, #entries=0|<CLID::MCS-7822-SERVER-Cluster><NID::172.16.240.124> 01/24/2009 19:09:30.721 Cisco CallManager|StationD: 4b16420  
SetSpeakerMode speakermode=2(Off).|<CLID::MCS-7822-SERVER-Cluster><NID::172.16.240.124><CT::1,100,95,1.102467><IP::172.16.240.126><DEV::SEP003094C2856E>  
01/24/2009 19:09:30.721 Cisco CallManager|StationD: 4b16420 ClearPromptStatus lineInstance=1  
callReference=16777371.|<CLID::MCS-7822-SERVER-Cluster><NID::172.16.240.124>  
<CT::1,100,95,1.102467><IP::172.16.240.126><DEV::SEP003094C2856E> 01/24/2009 19:09:30.721 **Cisco  
CallManager|StationD: 4b16420 CallState callState=2(OnHook)** lineInstance=1  
callReference=16777371|<CLID::MCS-7822-SERVER-Cluster><NID::172.16.240.124><CT::1,100,95,1.102467><IP::172.16.240.126><DEV::SEP003094C2856E>  
01/24/2009 19:09:30.721 Cisco CallManager|StationD: 4b16420 SelectSoftKeys instance=0  
reference=0 softKeySetIndex=0 validKeyMask=7.|<CLID::MCS-7822-SERVER-Cluster><NID::172.16.240.124><CT::1,100,95,1.102467><IP::172.16.240.126><DEV::SEP003094C2856E>  
01/24/2009 19:09:30.721 Cisco CallManager|StationD: 4b16420 DisplayPromptStatus timeOutValue=0  
promptStatus='Your current options' lineInstance=0 callReference=0.|<CLID::MCS-7822-SERVER-

Cluster><NID::172.16.240.124><CT::1,100,95,1.102467><IP::172.16.240.126><DEV::SEP003094C2856E>  
01/24/2009 19:09:30.721 Cisco CallManager|StationD: 4b16420 ctivateCallPlane  
lineInstance=0. |<CLID::MCS-7822-SERVER-  
Cluster><NID::172.16.240.124><CT::1,100,95,1.102467><IP::172.16.240.126><DEV::SEP003094C2856E>  
01/24/2009 19:09:30.721 Cisco CallManager|StationD: 4b16420 SetLamp stimulus=9(Line)  
stimulusInstance=1 lampMode=1(LampOff). |<CLID::MCS-7822-SERVER-Cluster><NID::172.16.240.124>  
<CT::1,100,95,1.102467><IP::172.16.240.126><DEV::SEP003094C2856E> 01/24/2009 19:09:30.721 Cisco  
CallManager|StationD: 4b16420 DefineTimeDate timeDateInfo=? systemTime=1018663770. |<CLID::MCS-  
7822-SERVER-  
Cluster><NID::172.16.240.124><CT::1,100,95,1.102467><IP::172.16.240.126><DEV::SEP003094C2856E>  
01/24/2009 19:09:30.721 Cisco CallManager|StationD: 4b16420 StopTone. |<CLID::MCS-7822-SERVER-  
Cluster><NID::172.16.240.124> <CT::1,100,95,1.102467><IP::172.16.240.126><DEV::SEP003094C2856E>  
01/24/2009 19:09:30.721 Cisco CallManager|ConnectionManager -  
wait\_AuDisconnectRequest(16777371,16777370): STOP SESSION |<CLID::MCS-7822-SERVER-  
Cluster><NID::172.16.240.124><CT::1,100,95,1.102467><IP::172.16.240.126><DEV::SEP003094C2856E>  
01/24/2009 19:09:30.721 Cisco CallManager|ConnectionManager -storeMediaInfo(16777371): EXISTING  
ENTRY DISCOVERED, tail == 2 |<CLID::MCS-7822-SERVER-  
Cluster><NID::172.16.240.124><CT::1,100,95,1.102467><IP::172.16.240.126><DEV::SEP003094C2856E>  
01/24/2009 19:09:30.721 Cisco CallManager|ConnectionManager - storeMediaInfo(16777370): EXISTING  
ENTRY DISCOVERED, tail == 2 |<CLID::MCS-7822-SERVER-Cluster><NID::172.16.240.124>  
<CT::1,100,95,1.102467><IP::172.16.240.126><DEV::SEP003094C2856E> 01/24/2009 19:09:30.721 Cisco  
CallManager|MediaCoordinator - wait\_AuDisconnectRequest |<CLID::MCS-7822-SERVER-  
Cluster><NID::172.16.240.124><CT::1,100,95,1.102467><IP::172.16.240.126><DEV::SEP003094C2856E>  
01/24/2009 19:09:30.731 Cisco CallManager|MediaCoordinator - wait\_AuDisconnectRequest - sending  
disconnect to MediaManager(26) |<CLID::MCS-7822-SERVER-Cluster><NID::172.16.240.124>  
<CT::1,100,95,1.102467><IP::172.16.240.126><DEV::SEP003094C2856E> 01/24/2009 19:09:30.731 Cisco  
CallManager|MediaManager - wait\_AuDisconnectRequest |<CLID::MCS-7822-SERVER-Cluster>  
<NID::172.16.240.124><CT::1,100,95,1.102467><IP::172.16.240.126><DEV::SEP003094C2856E>  
01/24/2009 19:09:30.731 Cisco CallManager|MediaManager - wait\_AuDisconnectRequest - StopSession  
sending disconnect to (71,26) and remove connection from list |<CLID::MCS-7822-SERVER-  
Cluster><NID::172.16.240.124><CT::1,100,95,1.102467><IP::172.16.240.126><DEV::SEP003094C2856E>  
01/24/2009 19:09:30.731 Cisco CallManager|StationD: 4b16420 CloseReceiveChannel conferenceID=0  
passThruPartyID=433. myIP: 7ef010ac (172.16.240.126) |<CLID::MCS-7822-SERVER-Cluster>  
<NID::172.16.240.124><CT::1,100,95,1.102467><IP::172.16.240.126><DEV::SEP003094C2856E>  
01/24/2009 19:09:30.731 Cisco CallManager|StationD: 4b16420 StopMediaTransmission conferenceID=0  
passThruPartyID=433. myIP: 7ef010ac (172.16.240.126) |<CLID::MCS-7822-SERVER-Cluster>  
<NID::172.16.240.124><CT::1,100,95,1.102467><IP::172.16.240.126><DEV::SEP003094C2856E>  
01/24/2009 19:09:30.731 Cisco CallManager|MGCPHandler send msg SUCCESSFULLY to: 172.16.15.129  
**MDCX 335 S0/SU2/ds1-0/23@AV-2620-4 MGCP 0.1 C: D00000000100009a0000000080000008 I: 3 X: 17 M:**  
recvonly R: D/[0-9ABCD\*#] Q: process,loop |<CLID::MCS-7822-SERVER-Cluster><NID::172.16.240.124>  
<CT::1,100,95,1.102467><IP::172.16.240.126><DEV::SEP003094C2856E> 01/24/2009 19:09:30.761 Cisco  
CallManager|MGCPHandler receivedmsg from: 172.16.15.129 200 335 OK |<CLID::MCS-7822-SERVER-  
Cluster><NID::172.16.240.124><CT::1,100,50,1.40813><IP::172.16.15.129><DEV::> 01/24/2009  
19:09:30.761 Cisco CallManager|MGCPHandler received RESP header w/ transId= 335 |<CLID:: MCS-  
7822-SERVER-Cluster> <NID::172.16.240.124><CT::1,100,50,1.40813><IP::172.16.15.129><DEV::>  
01/24/2009 19:09:30.761 Cisco CallManager |<CLID::MCS-7822-SERVER-  
Cluster><NID::172.16.240.124><CT::1,100,50,1.40813><MN::MGCPendPoint><MV::S0/SU2/ds1-0/23@AV-  
2620-4><DEV::S0/SU2/ds1-0@AV-2620-4> 01/24/2009 19:09:30.761 Cisco CallManager|MGCPHandler  
received RESP header w/ transId= 335 FOUND a match for MDCX |<CLID::MCS-7822-SERVER-  
Cluster><NID::172.16.240.124><CT::1,100,50,1.40813><IP::172.16.15.129><DEV::S0/SU2/ds1-0@AV-  
2620-4> 01/24/2009 19:09:30.761 Cisco CallManager|MediaManager -  
wait\_AuDisconnectReply |<CLID::MCS-7822-SERVER-Cluster>  
<NID::172.16.240.124><CT::1,100,50,1.40813><IP::172.16.15.129><DEV::S0/SU2/ds1-0@AV-2620-4>  
01/24/2009 19:09:30.761 Cisco CallManager|MediaManager - wait\_AuDisconnectReply - received all  
disconnect replies, forwarding a reply for party1(16777371) and party2(16777370) |<CLID::MCS-  
7822-SERVER-  
Cluster><NID::172.16.240.124><CT::1,100,50,1.40813><IP::172.16.15.129><DEV::S0/SU2/ds1-0@AV-  
2620-4> 01/24/2009 19:09:30.761 Cisco CallManager|MediaCoordinator -  
wait\_AuDisconnectReply |<CLID::MCS-7822-SERVER-Cluster>  
<NID::172.16.240.124><CT::1,100,50,1.40813><IP::172.16.15.129><DEV::S0/SU2/ds1-0@AV-2620-4>  
01/24/2009 19:09:30.761 Cisco CallManager|MediaCoordinator - wait\_AuDisconnectReply - removing  
MediaManager(26) from connection list |<CLID::MCS-7822-SERVER-Cluster>  
<NID::172.16.240.124><CT::1,100,50,1.40813><IP::172.16.15.129><DEV::S0/SU2/ds1-0@AV-2620-4>  
01/24/2009 19:09:30.761 Cisco CallManager|ConnectionManager -

wait\_AuDisconnectReply(16777371,16777370):STOP SESSION|<CLID::MCS-7822-SERVER-Cluster><NID::172.16.240.124><CT::1,100,50,1.40813><IP::172.16.15.129><DEV::S0/SU2/ds1-0@AV-2620-4> 01/24/2009 19:09:30.761 Cisco CallManager|ConnectionManager - deleteMediaInfoEntry(16777371): ENTRY DELETED, tail == 1|<CLID::MCS-7822-SERVER-Cluster><NID::172.16.240.124><CT::1,100,50,1.40813><IP::172.16.15.129><DEV::S0/SU2/ds1-0@AV-2620-4> 01/24/2009 19:09:30.761 Cisco CallManager|ConnectionManager - deleteMediaInfoEntry(16777370): ENTRY DELETED, tail == 0|<CLID::MCS-7822-SERVER-Cluster><NID::172.16.240.124><CT::1,100,50,1.40813><IP::172.16.15.129><DEV::S0/SU2/ds1-0@AV-2620-4> 01/24/2009 19:09:30.771 Cisco CallManager| |<CLID::MCS-7822-SERVER-Cluster><NID::172.16.240.124> 01/24/2009 19:09:30.771 Cisco CallManager|Out Message -- PriDisconnectMsg -- Protocol= PriNi2Protocol|<CLID::MCS-7822-SERVER-Cluster><NID::172.16.240.124> 01/24/2009 19:09:30.771 Cisco CallManager|Ie - Q931CauseIeIEData= 08 02 80 90 |<CLID::MCS-7822-SERVER-Cluster><NID::172.16.240.124> 01/24/2009 19:09:30.771 Cisco CallManager|MMan\_Id= 0. (iep= 0 dsl= 100 sapi= 0 ces= 0 IpAddr=810f10ac IpPort=2427)|<CLID::MCS-7822-SERVER-Cluster><NID::172.16.240.124> 01/24/2009 19:09:30.771 Cisco CallManager|IsdnMsgData2= 08 02 80 08 45 08 02 80 90 |<CLID::MCS-7822-SERVER-Cluster><NID::172.16.240.124> 01/24/2009 19:09:30.771 Cisco CallManager|MGCPBhHandler -Sending BhHdr: 0004 0000 0010 0100 0001 0009 |<CLID::MCS-7822-SERVER-Cluster><NID::172.16.240.124><CT::1,100,50,1.40813><IP::172.16.15.129><DEV::S0/SU2/ds1-0@AV-2620-4> 01/24/2009 19:09:30.801 Cisco CallManager|MGCPBhHandler 172.16.15.129 - TCP msg available from Device|<CLID::MCS-7822-SERVER-Cluster><NID::172.16.240.124><CT::1,100,48,1.302><IP::172.16.15.129><DEV::> 01/24/2009 19:09:30.801 Cisco CallManager|MGCPBhHandler - Receiving BhHdr: 0004 0000 0011 0100 0001 0005 |<CLID::MCS-7822-SERVER-Cluster><NID::172.16.240.124><CT::1,100,48,1.302><IP::172.16.15.129><DEV::> 01/24/2009 19:09:30.801 Cisco CallManager| |<CLID::MCS-7822-SERVER-Cluster><NID::172.16.240.124> 01/24/2009 19:09:30.801 **Cisco CallManager|In Message -- PriReleaseMsg -- Protocol= PriNi2Protocol**|<CLID::MCS-7822-SERVER-Cluster><NID::172.16.240.124> 01/24/2009 19:09:30.801 Cisco CallManager|MMan\_Id= 0. (iep= 0 dsl= 100 sapi= 0 ces= 0 IpAddr=810f10ac IpPort=2427)|<CLID::MCS-7822-SERVER-Cluster><NID::172.16.240.124> 01/24/2009 19:09:30.801 Cisco CallManager|IsdnMsgData1= 08 02 00 08 4D |<CLID::MCS-7822-SERVER-Cluster><NID::172.16.240.124> 01/24/2009 19:09:30.801 Cisco CallManager| |<CLID::MCS-7822-SERVER-Cluster><NID::172.16.240.124> 01/24/2009 19:09:30.801 **Cisco CallManager|Out Message -- PriReleaseCompleteMsg -- Protocol= PriNi2Protocol**|<CLID::MCS-7822-SERVER-Cluster><NID::172.16.240.124> 01/24/2009 19:09:30.801 Cisco CallManager|MMan\_Id= 0. (iep= 0 dsl= 100 sapi= 0 ces= 0 IpAddr=810f10ac IpPort=2427)|<CLID::MCS-7822-SERVER-Cluster><NID::172.16.240.124> 01/24/2009 19:09:30.801 Cisco CallManager|IsdnMsgData2= 08 02 80 08 5A |<CLID::MCS-7822-SERVER-Cluster><NID::172.16.240.124> 01/24/2009 19:09:30.801 Cisco CallManager|MGCPBhHandler -Sending BhHdr: 0004 0000 0010 0100 0001 0005 |<CLID::MCS-7822-SERVER-Cluster><NID::172.16.240.124><CT::1,100,48,1.302><IP::172.16.15.129><DEV::> 01/24/2009 19:09:30.801 Cisco CallManager|Delete entriesfrom TransTable, now this table has 0 entries|<CLID::MCS-7822-SERVER-Cluster><NID::172.16.240.124><CT::1,100,48,1.302><IP::172.16.15.129><DEV::> 01/24/2009 19:09:30.801 Cisco CallManager|Delete entries from CiCcp table, now this table has 0 entries|<CLID::MCS-7822-SERVER-Cluster><NID::172.16.240.124><CT::1,100,48,1.302><IP::172.16.15.129><DEV::> 01/24/2009 19:09:30.801 Cisco CallManager|MGCPHandler send msg SUCCESSFULLY to: 172.16.15.129 **DLCX 336 S0/SU2/ds1-0/23@AV-2620-4 MGCP 0.1** C: D00000000100009a0000000080000008 I: 3 X: 17 S: |<CLID::MCS-7822-SERVER-Cluster><NID::172.16.240.124><CT::1,100,48,1.302><IP::172.16.15.129><DEV::> 01/24/2009 19:09:30.801 Cisco CallManager|Locations: release: cdccPID=(1.13.78) no entry.|<CLID::MCS-7822-SERVER-Cluster><NID::172.16.240.124> 01/24/2009 19:09:30.851 Cisco CallManager|MGCPHandlerreceived msg from: 172.16.15.129 250 336 P: PS=289, OS=46240, PR=288, OR=46080, PL=0, JI=512, LA=0 |<CLID::MCS-7822-SERVER-Cluster><NID::172.16.240.124><CT::1,100,50,1.40814><IP::172.16.15.129><DEV::> 01/24/2009 19:09:30.851 Cisco CallManager|MGCPHandlerreceived RESP header w/ transId= 336|<CLID::MCS-7822-SERVER-Cluster><NID::172.16.240.124><CT::1,100,50,1.40814><IP::172.16.15.129><DEV::> 01/24/2009 19:09:30.851 Cisco CallManager|<CLID::MCS-7822-SERVER-Cluster><NID::172.16.240.124><CT::1,100,50,1.40814><MN::MGCPEndPoint><MV::S0/SU2/ds1-0/23@AV-2620-4><DEV::S0/SU2/ds1-0@AV-2620-4> 01/24/2009 19:09:30.851 Cisco CallManager|MGCPHandlerreceived RESP header w/ transId= 336 FOUND a match for DLCX|<CLID::MCS-7822-SERVER-Cluster><NID::172.16.240.124><CT::1,100,50,1.40814><IP::172.16.15.129><DEV::S0/SU2/ds1-0@AV-2620-4> 01/24/2009 19:09:36.279 Cisco CallManager|MGCPHandlerreceived msg from: 172.16.15.129



NTFY 100 \*@AV-2620-4 MGCP 0.1 X: 0 O: |<CLID::MCS-7822-SERVER-Cluster><NID::172.16.240.124><CT::1,100,50,1.40815><IP::172.16.15.129><DEV::> 01/24/2009 19:09:36.279 Cisco CallManager|<CLID::MCS-7822-SERVER-Cluster><NID::172.16.240.124><CT::1,100,50,1.40815><MN::MGCPEndPoint><MV::\*@AV-2620-4><DEV::> 01/24/2009 19:09:36.289 Cisco CallManager|MGCPHandlersend msg SUCCESSFULLY to: 172.16.15.129 200 100 |<CLID::MCS-7822-SERVER-Cluster><NID::172.16.240.124><CT::1,100,50,1.40815><IP::172.16.15.129><DEV::>

## [调试来自网关的 MGCP 信息包](#)

### AV-2620-4

```
AV-2620-4#debug mgcp packet Media Gateway Control
Protocol packets debugging is on AV-2620-4# *Mar 1
00:37:12.955: send_mgcp_msg, MGCP Packet sent to
172.16.240.124 ---> *Mar 1 00:37:12.955: NTFY 146 *@AV-
2620-4 MGCP 0.1 X: 0 O: <--- *Mar 1 00:37:12.967: MGCP
Packet received from 172.16.240.124- 200 146 *Mar 1
00:37:20.447: MGCP Packet received from 172.16.240.124-
CRCX 342 S0/SU2/ds1-0/23@AV-2620-4 MGCP 0.1 C:
D00000000100009e0000000080000009 M: inactive *Mar 1
00:37:20.467: send_mgcp_msg, MGCP Packet sent
to172.16.240.124 ---> *Mar 1 00:37:20.467: 200 342 I: 5
v=0 c=IN IP4 172.16.15.129 m=audio 16542 RTP/AVP 0 8 96
97 98 2 99 18 a=rtpmap:96 G.729a/8000/1 a=rtpmap:97
G.726-16/8000/1 a=rtpmap:98 G.726-24/8000/1 a=rtpmap:99
G.729b/8000/1 <--- *Mar 1 00:37:20.499: MGCP Packet
received from 172.16.240.124- RQNT 343 S0/SU2/ds1-
0/23@AV-2620-4 MGCP 0.1 X: 17 S: G/rt *Mar 1
00:37:20.503: send_mgcp_msg, MGCP Packet sent
to172.16.240.124 ---> *Mar 1 00:37:20.503: 200 343 OK <-
-- *Mar 1 00:37:24.915: MGCP Packet received
from172.16.240.124- MDCX 344 S0/SU2/ds1-0/23@AV-2620-4
MGCP 0.1 C: D00000000100009e0000000080000009 I: 5 X: 17
L: p:20, a:PCMU, s:off M: recvonly R: D/[0-9ABCD*#] Q:
process,loop *Mar 1 00:37:24.927: send_mgcp_msg, MGCP
Packet sent to 172.16.240.124 ---> *Mar 1 00:37:24.927:
200 344 OK <--- *Mar 1 00:37:24.939: MGCP Packet
received from 172.16.240.124- RQNT 345 S0/SU2/ds1-
0/23@AV-2620-4 MGCP 0.1 X: 17 S: *Mar 1 00:37:24.947:
send_mgcp_msg, MGCP Packet sent to 172.16.240.124 --->
*Mar 1 00:37:24.947: 200 345 OK <--- *Mar 1
00:37:24.979: MGCP Packet received from 172.16.240.124-
MDCX 346 S0/SU2/ds1-0/23@AV-2620-4 MGCP 0.1 C:
D00000000100009e0000000080000009 I: 5 X: 17 L: p:20,
a:PCMU, s:off M: sendrecv R: D/[0-9ABCD*#] S: Q:
process,loop v=0 o=- 5 0 IN EPN S0/SU2/ds1-0/23@AV-2620-
4 s=Cisco SDP 0 t=0 0 c=IN IP4 172.16.240.126 m=audio
29380 RTP/AVP 96 a=rtpmap:96 PCMU *Mar 1 00:37:24.991:
send_mgcp_msg, MGCP Packet sent to172.16.240.124 --->
*Mar 1 00:37:24.991: 200 346 OK <--- *Mar 1
00:37:32.243: MGCP Packet received from 172.16.240.124-
MDCX 347 S0/SU2/ds1-0/23@AV-2620-4 MGCP 0.1 C:
D00000000100009e0000000080000009 I: 5 X: 17 M: recvonly
R: D/[0-9ABCD*#] Q: process,loop *Mar 1 00:37:32.251:
send_mgcp_msg, MGCP Packet sent to172.16.240.124 --->
*Mar 1 00:37:32.251: 200 347 OK <--- *Mar 1
00:37:32.319: MGCP Packet received from172.16.240.124-
DLCX 348 S0/SU2/ds1-0/23@AV-2620-4 MGCP 0.1 C:
D00000000100009e0000000080000009 I: 5 X: 17 S: *Mar 1
00:37:32.343: send_mgcp_msg, MGCP Packet sent
to172.16.240.124 ---> *Mar 1 00:37:32.343: 250 348 P:
PS=363, OS=58080, PR=363, OR=58080, PL=0, JI=512, LA=0
<--- *Mar 1 00:37:42.955: send_mgcp_msg, MGCP Packet
```

```
sent to 172.16.240.124 ---> *Mar 1 00:37:42.955: NTFY
147 *@AV-2620-4 MGCP 0.1 X: 0 0: <--- *Mar 1
00:37:42.967: MGCP Packet received from 172.16.240.124-
AUEP 349 S0/SU2/ds1-0/1@AV-2620-4 MGCP 0.1 F: X *Mar 1
00:37:42.971: send_mgcp_msg, MGCP Packet sent to
172.16.240.124 ---> *Mar 1 00:37:42.971: 200 349 <---
*Mar 1 00:37:42.975: MGCP Packet received from
172.16.240.124- 200 147 AV-2620-4#und all All possible
debugging has been turned off
```

## 故障排除

### [导致i = 0x82B2 -请求的功能](#)

在作为MGCP网关配置的ISDN PRI电路中，呼出发生故障。`debug isdn q931`命令显示断开原因代码作为= 0x82B2 -。

当您查看[debug isdn q931断开原因代码时](#)，看起来是发生在本地Telco交换机由于请求的功能没有订阅的问题。为了解决此问题，请不选定发送在设备IE的呼叫的姓名并且显示在Cisco CallManager Gateway Configuration页的IE。参考[CallManager和主叫方名称](#)欲知更多信息。

请勿发出MGCP然后mgcp命令在MGCP网关路由器的全局配置模式为了重置从Cisco CallManager的MGCP网关。

### [导致i = 0x80E5 -消息与呼叫状态兼容](#)

在作为MGCP网关配置的ISDN PRI电路中，呼入呼叫发生故障。`debug isdn q931`命令显示这些断开原因代码：

```
AV-2620-4#debug mgcp packet Media Gateway Control Protocol packets debugging is on AV-2620-4#
*Mar 1 00:37:12.955: send_mgcp_msg, MGCP Packet sent to 172.16.240.124 ---> *Mar 1 00:37:12.955:
NTFY 146 *@AV-2620-4 MGCP 0.1 X: 0 0: <--- *Mar 1 00:37:12.967: MGCP Packet received from
172.16.240.124- 200 146 *Mar 1 00:37:20.447: MGCP Packet received from 172.16.240.124- CRCX 342
S0/SU2/ds1-0/23@AV-2620-4 MGCP 0.1 C: D00000000100009e0000000080000009 M: inactive *Mar 1
00:37:20.467: send_mgcp_msg, MGCP Packet sent to172.16.240.124 ---> *Mar 1 00:37:20.467: 200 342
I: 5 v=0 c=IN IP4 172.16.15.129 m=audio 16542 RTP/AVP 0 8 96 97 98 2 99 18 a=rtpmap:96
G.729a/8000/1 a=rtpmap:97 G.726-16/8000/1 a=rtpmap:98 G.726-24/8000/1 a=rtpmap:99 G.729b/8000/1
<--- *Mar 1 00:37:20.499: MGCP Packet received from 172.16.240.124- RQNT 343 S0/SU2/ds1-0/23@AV-
2620-4 MGCP 0.1 X: 17 S: G/rt *Mar 1 00:37:20.503: send_mgcp_msg, MGCP Packet sent
to172.16.240.124 ---> *Mar 1 00:37:20.503: 200 343 OK <--- *Mar 1 00:37:24.915: MGCP Packet
received from172.16.240.124- MDCX 344 S0/SU2/ds1-0/23@AV-2620-4 MGCP 0.1 C:
D00000000100009e0000000080000009 I: 5 X: 17 L: p:20, a:PCMU, s:off M: recvonly R: D/[0-9ABCD*#]
Q: process,loop *Mar 1 00:37:24.927: send_mgcp_msg, MGCP Packet sent to 172.16.240.124 ---> *Mar
1 00:37:24.927: 200 344 OK <--- *Mar 1 00:37:24.939: MGCP Packet received from 172.16.240.124-
RQNT 345 S0/SU2/ds1-0/23@AV-2620-4 MGCP 0.1 X: 17 S: *Mar 1 00:37:24.947: send_mgcp_msg, MGCP
Packet sent to 172.16.240.124 ---> *Mar 1 00:37:24.947: 200 345 OK <--- *Mar 1 00:37:24.979:
MGCP Packet received from 172.16.240.124- MDCX 346 S0/SU2/ds1-0/23@AV-2620-4 MGCP 0.1 C:
D00000000100009e0000000080000009 I: 5 X: 17 L: p:20, a:PCMU, s:off M: sendrecv R: D/[0-9ABCD*#]
S: Q: process,loop v=0 o=- 5 0 IN EPN S0/SU2/ds1-0/23@AV-2620-4 s=Cisco SDP 0 t=0 0 c=IN IP4
172.16.240.126 m=audio 29380 RTP/AVP 96 a=rtpmap:96 PCMU *Mar 1 00:37:24.991: send_mgcp_msg,
MGCP Packet sent to172.16.240.124 ---> *Mar 1 00:37:24.991: 200 346 OK <--- *Mar 1 00:37:32.243:
MGCP Packet received from 172.16.240.124- MDCX 347 S0/SU2/ds1-0/23@AV-2620-4 MGCP 0.1 C:
D00000000100009e0000000080000009 I: 5 X: 17 M: recvonly R: D/[0-9ABCD*#] Q: process,loop *Mar 1
00:37:32.251: send_mgcp_msg, MGCP Packet sent to172.16.240.124 ---> *Mar 1 00:37:32.251: 200 347
OK <--- *Mar 1 00:37:32.319: MGCP Packet received from172.16.240.124- DLCX 348 S0/SU2/ds1-
0/23@AV-2620-4 MGCP 0.1 C: D00000000100009e0000000080000009 I: 5 X: 17 S: *Mar 1 00:37:32.343:
send_mgcp_msg, MGCP Packet sent to172.16.240.124 ---> *Mar 1 00:37:32.343: 250 348 P: PS=363,
```

```
OS=58080, PR=363, OR=58080, PL=0, JI=512, LA=0 <--- *Mar 1 00:37:42.955: send_mgcp_msg, MGCP
Packet sent to 172.16.240.124 ---> *Mar 1 00:37:42.955: NTFY 147 *@AV-2620-4 MGCP 0.1 X: 0 0: <-
-- *Mar 1 00:37:42.967: MGCP Packet received from 172.16.240.124- AUEP 349 S0/SU2/ds1-0/1@AV-
2620-4 MGCP 0.1 F: X *Mar 1 00:37:42.971: send_mgcp_msg, MGCP Packet sent to 172.16.240.124 --->
*Mar 1 00:37:42.971: 200 349 <--- *Mar 1 00:37:42.975: MGCP Packet received from 172.16.240.124-
200 147 AV-2620-4#und all All possible debugging has been turned off
```

默认情况下，当telco发送全部编号(EN)时，Cisco CallManager退还等待更多编号()的SETUP\_ACK默认情况下，设置对真。在这种情况下，Cisco CallManager收到ISDN消息，对SETUP\_ACK的一答复发送到PSTN交换机。ISDN消息没有由在呼叫并且问题的此状态的Cisco CallManager认可。

为了解决问题，需要设置在Cisco CallManager的您参数是**错误**。然后，Cisco CallManager不发送SETUP\_ACK并且PSTN不应答有ISDN消息的上一步。

## [相关信息](#)

- [Cisco MGCP语音网关和Cisco CallManager版本3.1相互作用](#)
- [Cisco IOS软件版本的12.4\(6\)XT版本注释](#)
- [语音技术支持](#)
- [语音和统一通信产品支持](#)
- [Cisco IP 电话故障排除](#) 
- [技术支持和文档 - Cisco Systems](#)