

目录

[简介](#)

[先决条件](#)

[要求](#)

[使用的组件](#)

[规则](#)

[术语](#)

[了解呼叫流](#)

[基本的呼叫路由和拨号模式匹配](#)

[踪迹使用说明](#)

[故障排除](#)

[计划](#)

[集中的呼叫处理](#)

[分布式呼叫处理](#)

[安装检查表](#)

[NANP 标记](#)

[踪迹全文](#)

[呼叫 1000-1111 \(短\)](#)

[呼叫 1000-1111 \(完整\)](#)

[呼叫 1211](#)

[呼叫 1311 \(短\)](#)

[呼叫 1311 \(完整\)](#)

[相关信息](#)

简介

拨号方案从本质上描述用户为呼叫某个特定电话号码而拨打的数字的数量和模式。接入代码、区域代码、专用代码以及拨叫数字的组合都是拨号方案的组成部分。例如，北美公共交换电话网 (PSTN) 采用包括 3 位区域代码和 7 位电话号码的 10 位拨号方案。大多数专用交换分机 (PBX) 都支持采用 3 到 11 位的可变长度拨号方案。拨号方案必须符合与之连接的电话网络的要求。只有未链接到 PSTN 或其他 PBX 的完全专用语音网络才能使用它们所选的所有拨号方案。拨号方案类似于路由器中的静态路由表。Cisco CallManager 拨号方案进行了极大的改进，旨在实现更高的可扩展性、灵活性、安全性和易用性。它们需要大量规划，以免将来不得不出大规模的更改。本文档帮助读者理解拨号方案的概念、基本呼叫路由以及规划注意事项，并通过若干示例阐述这些要点。

先决条件

要求

Cisco 建议您了解 Cisco CallManager 3.x 和 4.x 的相关知识。

使用的组件

本文档不限于特定的软件或硬件版本。

规则

有关文档规则的详细信息，请参阅 [Cisco 技术提示规则](#)。

术语

其中与拨号方案相关的许多概念会在后续部分中通过示例予以讲解。以下是适用于 Cisco CallManager 的术语的基本定义。

目录号(DN) ? DN是终端设备的电话号码。它可以是分配给 IP 电话、Cisco IP SoftPhone、传真机或连接到网关的模拟电话的电话号码。例如 1000、24231 等。

路由模式 ? 在VoIP，路由模式是静态路由等同。两者唯一的区别在于路由模式指向 E.164 号码而非 IP 地址。路由模式是一个特定的号码，通常是一系列拨叫号码，用于将呼叫直接路由至设备（如 DT-24+ 或有语音功能的路由器）或通过路由列表间接路由至设备。例如，1XXX 表示 1000 至 1999。1XXX 中的 X 表示单个数字、占位符或通配符。其他类似的占位符将在下文中予以介绍，如 @、.和!)。只要路由过滤器不同，路由模式在分区内就无需唯一。一般来讲，路由模式与外部呼叫的拨叫号码匹配，用于执行数字操作（可选），以及为路由指定路由列表。

路由列表 ? 以前呼叫的路由点，路由列表允许Cisco CallManager通过路由组列表寻找配置的顺序按首选的顺序。路由列表由路由组的排序列表组成。路由列表扩展了路由组的概念，使用户可以对路由组进行排序并为其设定优先级。多个路由列表可指向同一个路由组。路由列表会选择呼叫路由的路径并指向按优先级排序的路由组。

路由组 ? 路由组和路由列表控制和提高外部呼叫路由。路由组是被视为同等访问的一个或多个网关或网关上的端口的列表。它类似于传统 PBX 术语中的中继组。例如，可以将两个 Primary Rate 接口 (PRI) 电路连接到可反复使用的同一载波。某个网关或网关上的某个特定端口只能添加到一个路由组。

设备 ? 设备，这样，是基于膜状的网关(DT-24+、AS/AT或者Catalyst 6000网关)，基于MGCP的 (VG200)，或者H.323-based (所有Cisco IOS网关和其他思科CallManager)。这些都是路由组可以指向的设备。它们不包括基于 Skinny 或 H.323 的端点，如 IP 电话 或 NetMeeting 客户端。

转换模式 ? 转换模式用于为了翻译呼叫(拨叫号码标识服务[DNIS])和呼叫(自动数字标识[ANI])编号，在呼叫路由前。例如，您可能对一组号码 919 392-3XXX 进行呼叫，这组号码必须转换为 2XXX 范围内的一组 IP 电话。在 Cisco CallManager 中，为 919 392-3XXX 设置这样的转换模式：将前面的 919 392-3 更改为 2，同时将其余数字保留不变。这样，呼叫将被路由至适当的 IP 电话。转换模式仅用于实际的转换，不能用作去除或添加数字的简单方式。

路由过滤器 ? 当@占位符用于北美拨号方案时，路由过滤器可以不仅用于限制正在拨号，而且识别一个模式的一子集与占位符的。Cisco CallManager 可以标识所有号码、国际访问、区域代码和办公室电话中的标记。例如，您可以使用它阻止 900 区域代码。它还可以与分区和呼叫搜索空间配合使用，以设置复杂的规则。例如，您可以设置路由过滤器，允许 Executive 用户组拨打任意号码（包括国际号码），而限制 Staff 用户组只能拨打本地号码或长途电话，并限制 Guest 用户组只能拨打本地号码、911 和 800 号码。

分区 ? 分区是目录号和路由模式的一个逻辑组与相似的特性可接通性的。为简单起见，以上术语通常按照其自身特点进行命名，如“NYLongDistance”和“NY911”。当 DN 或路由模式被置于某个特定分区中时，它会创建规则，规定可呼叫该设备或路由列表的人员。

呼叫搜索空间？呼叫搜索空间是搜索的分区的一组，当您做一呼叫时，定义了什么编号设备能呼叫。例如，对于具有 Executive 呼叫搜索空间的 IP 电话号码，当它发起呼叫时可能有“NYInternationalCall”、“NYLongDistance”、“NYLocalCall”和“NY911”分区可供搜索。具有 Guest 呼叫搜索空间的 IP 电话号码只允许搜索“NYLocalCall”和“NY911”。如果该号码试图拨打国际号码，则无法找到匹配项，呼叫也无法路由。呼叫搜索空间定义了可以呼叫的目录号码和路由模式。

注意：在呼叫路由方面，Cisco CallManager 2.x 与 Cisco CallManager 3.x 或 4.x 之间的主要区别在于分区和呼叫搜索空间的概念，以及术语“路由列表”对术语“路由点”的替换。

寻找？允许将处理的呼叫对的线群列表每组能独立地使用三种算法之一，叫作广播、顶部下来或者循环：

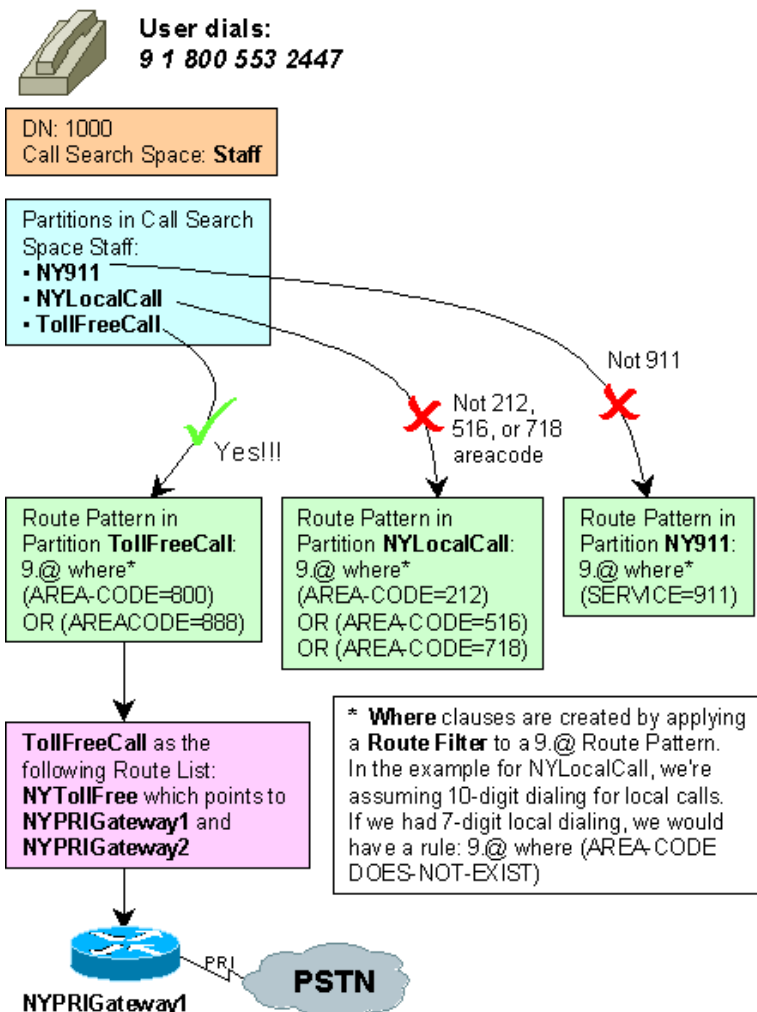
- 寻线会在与寻线列表关联的寻线引导号码被呼叫时开始。
- 可以直接呼叫寻线引导号码，也可以通过转发到达寻线引导号码。
- 进行寻线时，将忽略寻线方的转发字段。下一个响铃的电话由寻线列表内的线路组决定。

注意：在 Cisco CallManager 版本 4.0 中，寻线会在某个寻线方应答呼叫或寻线列表用尽时停止。当寻线因为寻线列表用尽而停止时，呼叫方会收到交换机忙音或同等的通知。

呼叫转接？允许用户指定对他们的编号的呼叫如何可以重定向，当用户不能应答在指定的时间时间间隔的一呼叫，叫作呼叫转发无应答时，或者，当用户忙碌时，叫作呼叫转发忙。

了解呼叫流

下图展示了一个典型的呼叫流：



基本的呼叫路由和拨号模式匹配

Cisco CallManager 可执行最匹配的路由。此部分的例子很好地解释了这项功能。如果您尝试对拨号方案的问题进行故障排除，请在启用任何跟踪之前阅读本文档中的[故障排除](#)部分。

- 在 Cisco CallManager 3.x 和 4.x 中不再允许使用 N 占位符。请改用 [2-9]。
- 在配置辅助拨号音时，请记住，只有路由模式明确后，您才会听到拨号音。。这与辅助拨号音无关。
- 请确保您没有在任何电话号码中使用 9，否则在提供拨打 9.@ 号码的拨号音之前需要进行额外的数字收集。

当用户拨打某个号码并由路由器解析数字时，会执行数字分析。例如，当用户拨打 1000 时，它可与 Cisco CallManager 中配置的 1XXX、100X 或 1! 模式匹配。有许多可用于表示一系列拨叫数字的特殊字符，如下表所示：

占位符	说明	示例
位	按字面值解释的数字。	0 与 0 匹配，1 与 1 匹配，2 与 2 匹配，依此类推
X	0 至 9 范围内的任意单个数字。	X 与 0、1、2、3、4、5、6、7、8 或 9 匹配。
[[m-n]	m 至 n 范围内的任意单个数字。	[[4-9] 与 4、5、6、7、8 或 9 匹配。
[[^m-n]	m 至 n 范围之外的任意单个数字。	[[^4-9] 与 0、1、2、3、# 或 * 匹配。
!!	0 至 9 范围内的一个或多个数字。此占位符对应可变长度拨号方案非常实用。在按下 # 键或数字间超时（默认为 10 秒）到期之前，不会对呼叫进行路由。	9! 与 91、911 或 912342 匹配，但不与 9 匹配，因为 ! 至少需要一位数字才能实现匹配。
? ?	与 ! 相同，但它可与零或多个数字匹配。	9 ? 与 9、91、911 或 912342 匹

		配。
+	一个或多个上述数字或某个占位符。	9+ 与 99、999 或 9999 匹配，9X+ 等同于 9! 和 9X?
.	号码中可在模式匹配完成后去除的部分	匹配模式 : 9.8XXX。丢弃数字指令 (DDI) : Pre Dot, 如果用户拨 98111, PreDot DDI应用对 9.8XXX路由模式, 剥离 ?9 ?从拨号数字和发送仅8111对 PBX。
@	引用北美编号方案 (NANP), 这实际上是一个包含约 300 个独立模式的宏。因为 @ 做, 您能使用此占位符运用过滤规则 ? 区域代码 ? 并且 ? 服务代码 ? 过滤检查的联机。有关标记的其他信息, 请参阅本文档的 NANP 标记 部分。	[[2-9]11 与 211、311、411、511、611、711、811 或 911 匹配。[2-9]XX 与 7 位本地号码匹配。[2-9]XX [2-9]XX 与 10 位本地号码匹配。1 [2-9]XX [2-9]XX 与 11位长途号码匹配。011 3[0-469]! 与国际号码匹配

当您使用 @ 占位符时, 可能会遇到以下两种常见问题:

- 当用户拨打一个 7 位号码时, 必须等待数字间超时到期或按下 # 键。转到 **Route Filter** 窗口, 添加一个带有 **LOCAL-AREA-CODE DOES-NOT-EXIST AND END-OF-DIALING DOES-NOT-EXIST** 条件的过滤器。将此过滤器应用于包含 @ 占位符的路由模式。
- 用户不能拨局代码是X11的号码(1 +区域代码+局代码+分机), 例如11在1 800 611 4215或1 919 311 5432。解决方法是将另一个路由模式 (如 9.1 [2-9]XX [2-9]11 XXXX) 添加到与 9.@ 模式相同的网关或路由列表。请不要忘记添加相同的数字丢弃指令 (如果有)。

下面是一些路由模式示例：

模式	匹配
1111	仅 1111
*1*1	仅 *1*1
12XX	仅 1200 至 1299
13[25-8]6	仅 1326、1356、1366、1376、1386
13[^3-9]6	仅 1306、1316、1326、13*6、13#6
13!#	任何以 13 开头、位于一个或多个数字之前并以 # 结尾的号码。匹配项的示例包括 135# 和 13579#。


请考虑以下拨号方案：

模式	匹配
1111	仅 1111
1211	仅 1211
1[23]X X	仅 1200 至 1399
131	仅 131
13[0-4]X	仅 1300 至 1349
13!	任何以 13 开头并位于一个或多个数字之前的号码。

如果用户拨打 1111，则会等到四位数字全部输入后才对呼叫进行路由。

踪迹使用说明

- 在针对拨号方案问题启用任何跟踪之前，请阅读本文档的[故障排除](#)部分。
- 将用户掩码的用户掩码位设置为 5 可对拨号方案问题进行调试。将系统踪迹的用户掩码位设置

为 11 可查看更多数字分析信息。  **警告：** 设置掩码位 11 时需谨慎，因为其产生的负载会影响频繁使用的系统的性能。

- 要查看 tcpHandle 所映射的 IP 地址，请使用网络分析器捕捉每 30 秒一次的 keepalive 消息。只要在 Cisco CallManager 中注册了电话的 tcpHandle，它便会保持不变。
- StationD 消息总是从 Cisco CallManager 发送到 IP 电话。StationInit 消息则是从电话发送到 Cisco CallManager。
- Instance 是适用于该特定电话模板的线路实例。Line(9) 是指一个 **Line 按键**，而非 **Hold** 或其他类型。

有关使用跟踪工具的详情，请参阅[设置用于 Cisco 技术支持的 Cisco CallManager 踪迹](#)。如果您使用 Cisco CallManager 3.1，也可以参阅[Cisco CallManager 踪迹](#)。

注意： [Cisco CallManager 踪迹](#) 中介绍的许多步骤同样适用于 3.0。

下一个输出示例是仅设置了用户掩码位 5 的踪迹片段。有关完整踪迹（仅设置掩码位 5），请参阅本文档的[呼叫 1000-1111（短）](#)部分。有关同时启用了系统踪迹的完整踪迹，请参阅本文档的[呼叫 1000-1111（充分）](#)部分。

注意：在此踪迹中，tcpHandle 0x53563d0 是呼叫电话，0x53294d8 是被叫电话 (DN=1111)。

```
!--- Output is suppressed. |StationD - stationOutputStartTone: 33=InsideDialTone
tcpHandle=0x53563d0 |StationInit - InboundStim - KeypadButtonMessageID kpButton: 1
tcpHandle=0x53563d0 |StationD - stationOutputStopTone tcpHandle=0x53563d0 |StationD -
stationOutputSelectSoftKeys tcpHandle=0x53563d0 |StationInit - InboundStim -
KeypadButtonMessageID kpButton: 1 tcpHandle=0x53563d0 |StationInit - InboundStim -
KeypadButtonMessageID kpButton: 1 tcpHandle=0x53563d0 |StationInit - InboundStim -
KeypadButtonMessageID kpButton: 1 tcpHandle=0x53563d0 |Locations: Orig=0 BW=-1 Dest=0 BW=-1
(-1 implies infinite bw available) |StationD - stationOutputCallState tcpHandle=0x53294d8
|StationD - stationOutputCallInfo CallingPartyName=Markus (1000), CallingParty=1000,
CalledPartyName=Dave (1111), CalledParty=1111, tcpHandle=0x53294d8 |StationD -
stationOutputSetLamp stim: 9=Line instance=3 lampMode=LampBlink tcpHandle=0x53294d8
|StationD - stationOutputSetRinger: 2=InsideRing tcpHandle=0x53294d8 |StationD -
stationOutputDisplayNotify tcpHandle=0x53294d8 |StationD - stationOutputDisplayPromptStatus
tcpHandle=0x53294d8 |StationD - stationOutputSelectSoftKeys tcpHandle=0x53294d8 |StationD -
stationOutputCallState tcpHandle=0x53563d0 |StationD - stationOutputCallInfo
CallingPartyName=Markus (1000), CallingParty=1000, CalledPartyName=, CalledParty=1111,
tcpHandle=0x53563d0 |StationD - stationOutputCallInfo CallingPartyName=Markus (1000),
CallingParty=1000, CalledPartyName=Dave (1111), CalledParty=1111, tcpHandle=0x53563d0
|StationD - stationOutputStartTone: 36=AlertingTone tcpHandle=0x53563d0!--- Output is
suppressed.
```

如果用户拨打 1211，它会与 1211 和 1[23]XX 匹配。由于 1211 只能与一个潜在拨号字符串匹配，而 1[23]XX 有 200 个匹配项，因此选择的模式为 1211。此选择过程是最匹配呼叫路由的本质所在。有关此过程的 Serial Digital Interface (SDI) 完整踪迹，请参阅本文档的[呼叫 1211](#) 部分。

```
!--- Output is suppressed. |StationInit - InboundStim - StimulusMessageID stimulus: Line(9)
Instance: 1 tcpHandle=0x53563d0 |StationInit - InboundStim - OffHookMessageID
tcpHandle=0x53563d0 |StationD - StimLine: OnHook --- OnHook |StationD -
stationOutputSetSpeakerMode: 1 tcpHandle=0x53563d0 |StationD - stationOutputDisplayText
tcpHandle=0x53563d0, Display= 1000 |StationD - stationOutputDisplayText tcpHandle=0x53563d0,
Display= 1000 |StationD - stationOutputSetLamp stim: 9=Line instance=1 lampMode=LampOn
tcpHandle=0x53563d0 |StationD - stationOutputCallState tcpHandle=0x53563d0 |StationD -
stationOutputDisplayPromptStatus tcpHandle=0x53563d0 |StationD - stationOutputSelectSoftKeys
tcpHandle=0x53563d0 |StationD - stationOutputActivateCallPlane tcpHandle=0x53563d0 |Digit
analysis: match(fqcn="", cn="1000", pss="", dd="") |Digit analysis: analysis results
|PretransformCallingPartyNumber=1000 |CallingPartyNumber=1000 |DialingPartition=
|DialingPattern= |DialingRoutePatternRegularExpression= |DialingWhere=
|PatternType=Unknown |PotentialMatches=PotentialMatchesExist |DialingSdlProcessId=(0,0,0)
|PretransformDigitString= |PretransformTagsList= |PretransformPositionalMatchList=
|CollectedDigits= |TagsList= |PositionalMatchList= |RouteBlockFlag=BlockThisPattern
|InterceptPartition= |InterceptPattern= |InterceptWhere=
|InterceptSdlProcessId=(1,82,1) |InterceptSsType=16777221 |InterceptSsKey=7864 |StationD
- stationOutputStartTone: 33=InsideDialTone tcpHandle=0x53563d0 |CMPProcMon - -----Entered
Router Verification |CMPProcMon - ----Exited Router Verification |StationInit - InboundStim -
KeypadButtonMessageID kpButton: 1 tcpHandle=0x53563d0 |StationD - stationOutputStopTone
tcpHandle=0x53563d0 |StationD - stationOutputSelectSoftKeys tcpHandle=0x53563d0 |Digit
analysis: match(fqcn="", cn="1000", pss="", dd="1") |Digit analysis:
potentialMatches=PotentialMatchesExist |StationInit - InboundStim - KeypadButtonMessageID
kpButton: 2 tcpHandle=0x53563d0 |Digit analysis: match(fqcn="", cn="1000", pss="", dd="12")
|Digit analysis: potentialMatches=PotentialMatchesExist |StationInit - InboundStim -
KeypadButtonMessageID kpButton: 1 tcpHandle=0x53563d0 |Digit analysis: match(fqcn="",
cn="1000", pss="", dd="121") |Digit analysis: potentialMatches=PotentialMatchesExist
|StationInit - InboundStim - KeypadButtonMessageID kpButton: 1 tcpHandle=0x53563d0 |Digit
analysis: match(fqcn="", cn="1000", pss="", dd="1211") |Digit analysis: analysis results
|PretransformCallingPartyNumber=1000 |CallingPartyNumber=1000 |DialingPartition=
|DialingPattern=1211 |DialingRoutePatternRegularExpression=(1211) |DialingWhere=
|PatternType=Enterprise |PotentialMatches=NoPotentialMatchesExist
```

```

|DialingSdlProcessId=(1,38,19) |PretransformDigitString=1211
|PretransformTagsList=SUBSCRIBER |PretransformPositionalMatchList=1211
|CollectedDigits=1211 |TagsList=SUBSCRIBER |PositionalMatchList=1211
|RouteBlockFlag=RouteThisPattern |InterceptPartition= |InterceptPattern=
|InterceptWhere= |InterceptSdlProcessId=(0,0,0) |InterceptSsType=0 |InterceptSsKey=0
|Locations: Orig=0 BW=-1 Dest=0 BW=-1 (-1 implies infinite bw available) |StationD -
stationOutputCallState tcpHandle=0x56ca080 |StationD - stationOutputCallInfo
CallingPartyName=Markus (1000), CallingParty=1000, CalledPartyName=1211, CalledParty=1211,
tcpHandle=0x56ca080 |StationD - stationOutputSetLamp stim: 9=Line instance=4
lampMode=LampBlink tcpHandle=0x56ca080 |StationD - stationOutputSetRinger: 2=InsideRing
tcpHandle=0x56ca080 |StationD - stationOutputDisplayNotify tcpHandle=0x56ca080 |StationD -
stationOutputDisplayPromptStatus tcpHandle=0x56ca080 |StationD - stationOutputSelectSoftKeys
tcpHandle=0x56ca080 |StationD - stationOutputCallState tcpHandle=0x53563d0 |StationD -
stationOutputCallInfo CallingPartyName=Markus (1000), CallingParty=1000, CalledPartyName=,
CalledParty=1211, tcpHandle=0x53563d0 |StationD - stationOutputCallInfo
CallingPartyName=Markus (1000), CallingParty=1000, CalledPartyName=1211, CalledParty=1211,
tcpHandle=0x53563d0 |StationD - stationOutputStartTone: 36=AlertingTone tcpHandle=0x53563d0!--
- Output is suppressed.

```

如果用户拨打 1311，Cisco CallManager 会等待数字间计时器到期。由于是 13! 模式，因此用户有可能尚未完成号码输入。计时器到期后，便会有三个匹配项：**1[23]XX**、**13[0-4]X** 和 **13!**。由于 **1[23]XX** 与大约 200 个模式匹配，**13[0-4]X** 与大约 50 个模式匹配，而 **13!** 与无数模式匹配，因此选择 **13[0-4]X**。有关此过程的 SDI 踪迹，请参阅本文档的[呼叫 1311 \(完整\)](#) 部分，有关仅设置掩码位 5 以用于调试的踪迹，请参阅本文档的[呼叫 1311 \(短\)](#) 部分。

```

!--- Output is suppressed. |StationInit - InboundStim - KeypadButtonMessageID kpButton: 1
tcpHandle=0x53563d0 |StationD - stationOutputStopTone tcpHandle=0x53563d0 |StationD -
stationOutputSelectSoftKeys tcpHandle=0x53563d0 |Digit analysis: match(fqcn="", cn="1000",
pss="", dd="1") |Digit analysis: potentialMatches=PotentialMatchesExist |StationInit -
InboundStim - KeypadButtonMessageID kpButton: 3 tcpHandle=0x53563d0 |Digit analysis:
match(fqcn="", cn="1000", pss="", dd="13") |Digit analysis:
potentialMatches=PotentialMatchesExist |StationInit - InboundStim - KeypadButtonMessageID
kpButton: 1 tcpHandle=0x53563d0 |Digit analysis: match(fqcn="", cn="1000", pss="",
dd="131") |Digit analysis: analysis results ||PretransformCallingPartyNumber=1000
|CallingPartyNumber=1000 |DialingPartition= |DialingPattern=131
|DialingRoutePatternRegularExpression=(131) |DialingWhere= |PatternType=Enterprise
|PotentialMatches=PotentialMatchesExist |DialingSdlProcessId=(1,38,22)
|PretransformDigitString=131 |PretransformTagsList=SUBSCRIBER
|PretransformPositionalMatchList=131 |CollectedDigits=131 |TagsList=SUBSCRIBER
|PositionalMatchList=131 |RouteBlockFlag=RouteThisPattern |InterceptPartition=
|InterceptPattern= |InterceptWhere= |InterceptSdlProcessId=(0,0,0) |InterceptSsType=0
|InterceptSsKey=0 |StationInit - InboundStim - KeypadButtonMessageID kpButton: 1
tcpHandle=0x53563d0 |Digit analysis: match(fqcn="", cn="1000", pss="", dd="1311") |Digit
analysis: analysis results ||PretransformCallingPartyNumber=1000 |CallingPartyNumber=1000
|DialingPartition= |DialingPattern=13[0-4]X |DialingRoutePatternRegularExpression=(13[0-
4]X) |DialingWhere= |PatternType=Enterprise |PotentialMatches=PotentialMatchesExist
|DialingSdlProcessId=(1,38,21) |PretransformDigitString=1311
|PretransformTagsList=SUBSCRIBER |PretransformPositionalMatchList=1311
|CollectedDigits=1311 |TagsList=SUBSCRIBER |PositionalMatchList=1311
|RouteBlockFlag=RouteThisPattern |InterceptPartition= |InterceptPattern=
|InterceptWhere= |InterceptSdlProcessId=(0,0,0) |InterceptSsType=0 |InterceptSsKey=0
|Locations: Orig=0 BW=-1 Dest=0 BW=-1 (-1 implies infinite bw available) |StationD -
stationOutputCallState tcpHandle=0x56ca080!--- Output is suppressed.

```

故障排除

- Cisco CallManager 通过线路实例和与线路关联的设备的呼叫搜索空间进行搜索。
- 如果设备不是分区的一部分，则被视为空分区或默认分区的一部分。每个用户都必须能够呼叫该设备。空分区总是最后进行搜索。
- 如果您拨打的是与 **9.@** 模式匹配的外部号码，而且呼叫接通之前的时间达到十秒，请检查过滤选项。默认情况下，采用 **9.@** 模式时，拨打 7 位号码的等待时间为 10 秒钟。您需要将过滤器

应用于显示 LOCAL-AREA-CODE DOES-NOT-EXIST 的模式。

- Cisco CallManager 升级后，用户会在按下 9 以访问外线时听到不同的辅助拨号音。要解决这个问题，请通过 Cisco CallManager 的“Administration”页面使用 Cisco IP Telephony Locale Installer 插件。或者，也可以通过以下地址下载此插件：[Cisco Unified Communications Locale Installer](#)（仅限注册用户）

- 当您先拨 9 再拨 0 以便与本地运营商联系时，如果呼叫超时且听到快速忙音，则可能是重叠路由模式的问题。如果您采用 9.@ 路由模式，9.0 会与 9.@ 重叠。因此，当您尝试先拨 9 以访问外线再拨 0 以联系运营商时，拨号模式会预期您拨打更多数字，就像国际号码 (011) 那样。由于您没有输入更多数字，呼叫将超时并返回快速忙音。要解决此问题，请在 Cisco

CallManager 中添加一个新的路由模式，如下所示：
`!--- Output is suppressed. |StationInit - InboundStim - KeypadButtonMessageID kpButton: 1 tcpHandle=0x53563d0 |StationD - stationOutputStopTone tcpHandle=0x53563d0 |StationD - stationOutputSelectSoftKeys tcpHandle=0x53563d0 |Digit analysis: match(fqcn="", cn="1000", pss="", dd="1") |Digit analysis: potentialMatches=PotentialMatchesExist |StationInit - InboundStim - KeypadButtonMessageID kpButton: 3 tcpHandle=0x53563d0 |Digit analysis: match(fqcn="", cn="1000", pss="", dd="13") |Digit analysis: potentialMatches=PotentialMatchesExist |StationInit - InboundStim - KeypadButtonMessageID kpButton: 1 tcpHandle=0x53563d0 |Digit analysis: match(fqcn="", cn="1000", pss="", dd="131") |Digit analysis: analysis results ||PretransformCallingPartyNumber=1000 |CallingPartyNumber=1000 |DialingPartition= |DialingPattern=131 |DialingRoutePatternRegularExpression=(131) |DialingWhere= |PatternType=Enterprise |PotentialMatches=PotentialMatchesExist |DialingSdlProcessId=(1,38,22) |PretransformDigitString=131 |PretransformTagsList=SUBSCRIBER |PretransformPositionalMatchList=131 |CollectedDigits=131 |TagsList=SUBSCRIBER |PositionalMatchList=131 |RouteBlockFlag=RouteThisPattern |InterceptPartition= |InterceptPattern= |InterceptWhere= |InterceptSdlProcessId=(0,0,0) |InterceptSsType=0 |InterceptSsKey=0 |StationInit - InboundStim - KeypadButtonMessageID kpButton: 1 tcpHandle=0x53563d0 |Digit analysis: match(fqcn="", cn="1000", pss="", dd="1311") |Digit analysis: analysis results ||PretransformCallingPartyNumber=1000 |CallingPartyNumber=1000 |DialingPartition= |DialingPattern=13[0-4]X |DialingRoutePatternRegularExpression=(13[0-4]X) |DialingWhere= |PatternType=Enterprise |PotentialMatches=PotentialMatchesExist |DialingSdlProcessId=(1,38,21) |PretransformDigitString=1311 |PretransformTagsList=SUBSCRIBER |PretransformPositionalMatchList=1311 |CollectedDigits=1311 |TagsList=SUBSCRIBER |PositionalMatchList=1311 |RouteBlockFlag=RouteThisPattern |InterceptPartition= |InterceptPattern= |InterceptWhere= |InterceptSdlProcessId=(0,0,0) |InterceptSsType=0 |InterceptSsKey=0 |Locations: Orig=0 BW=-1 Dest=0 BW=-1 (-1 implies infinite bw available) |StationD - stationOutputCallState tcpHandle=0x56ca080!--- Output is suppressed.`

当您需联系运营商时，请先拨 9 再拨 0，然后按井号键 (#) 以便立即对呼叫进行路由而不等待更多数字。有关路由模式配置的详情，请参阅[在 Cisco CallManager 中配置拨号方案](#)。

- 使用 MGCP 网关在被叫方号码中添加后缀号码是不可能的，因为被叫方转换是基于 XOR 机制进行的，而且也不存在添加后缀号码的特定方法，因为每个数字的逻辑相关性是从左向右排列的。因此，您只能添加前缀。实现此目标的唯一途径是使用 H323 网关，因为它具有将主叫/被叫方转换混合并根据需要进行转换的智能功能。

要使用 SDI 踪迹工具查看清晰的呼叫流以排除拨号方案故障并不容易。在您使用 SDI 踪迹工具之前，请尝试应用以下准则：

首先，获取以下相关信息：

- 什么是发起呼叫的目录号？
- 什么是目录号的呼叫搜索空间？此类信息可在线路配置下找到。
- 什么是配置目录号的设备的呼叫搜索空间？确保您能识别正确的设备。由于 Cisco CallManager 支持存在多条线路，您可以同时在一台设备上使用一个目录号。请注意设备上配置的呼叫搜索空间。如果 IP 电话发起呼叫，请记住，特定的线路和与之关联的设备都具有呼叫

搜索空间。进行呼叫时，两者会组合起来。假设线路实例 1000 具有 AccessLevelX 的呼叫搜索空间，而且 IP 电话配置了分机 1000 作为其呼叫搜索空间。从该线路发出呼叫时，Cisco CallManager 会搜索呼叫搜索空间 AccessLevelX 和 AccessLevelY 中包含的分区。

- 什么是与呼叫搜索空间关联的分区？
- 什么是设备希望或不希望呼叫前往的分区？
- 什么是拨打的号码？请注意他们在任何阶段是否及何时收到辅助拨号音，以及所有数字输入完毕后他们听到的内容。是否为重新订购或快速忙音？在期望听到任何内容之前，他们是否听到进程音？请确保他们在按下最后一位数字之前至少等待十秒钟，因为必须等到数字间计时器到期。

然后，完成下列步骤：

1. 查阅路由方案报告，以检查位于呼叫的呼叫搜索空间内的分区的所有路由模式。如有必要，可添加或修改路由模式或路由过滤器。
2. 如果可以找到向其发送呼叫的路由模式，请记下模式指向的路由列表或网关。如果指向的是路由列表，请检查哪些路由组在列表中，以及哪些外观在这些路由组中。
3. 验证适用设备是否已在 Cisco CallManager 中注册。
4. 请密切注意 @ 占位符。这是一种可展开以包含许多不同内容的宏。它常与过滤选项组合使用。

计划

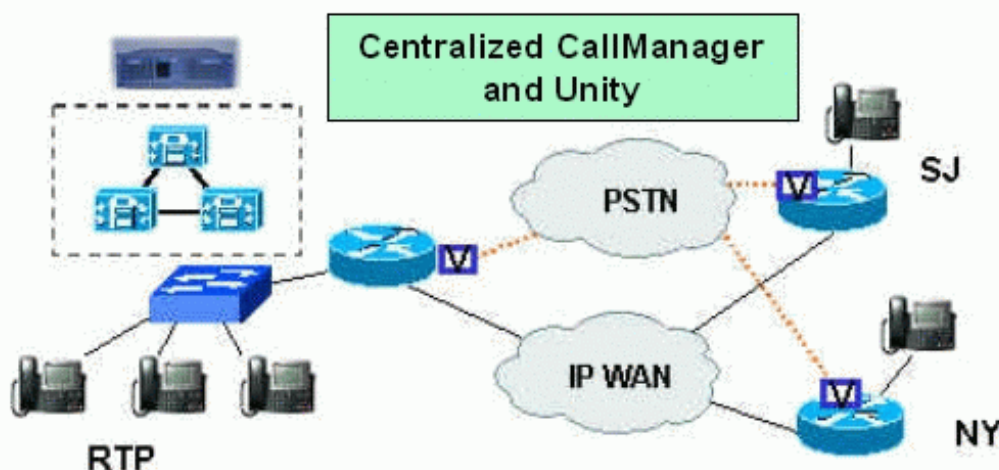
当您设计拨号方案时，我们建议您采用 4 位或 5 位数字的本地拨号方案。如果您采用任何更低的配置，与 Cisco Unity 语音邮件服务的集成可能会非常困难。

请记住，Cisco CallManager 或集群无法共享拨号方案。两者都是独立的单元。每个 Cisco CallManager 或集群都必须将所有关于拨号方案的注意事项和设计问题（如语音邮件和会议或转码问题）考虑在内。

当您修建拨号计划时，目标必须是最终用户的尽可能简单地保持规划和使用的本地 PSTN 网关访问访问码？例如必须到达在 PSTN 以及为呼叫也许横断 IP 广域网的 9 或 0？for 位置。如果 IP WAN 不可用或资源不足，则必须对最终用户公开这些情况。

您在实施拨号方案时首先要考虑的因素是网络拓扑。如果您有多个站点，则需要确定每个站点是拥有自己的 Cisco CallManager 还是由一个集中式 Cisco CallManager 进行控制。

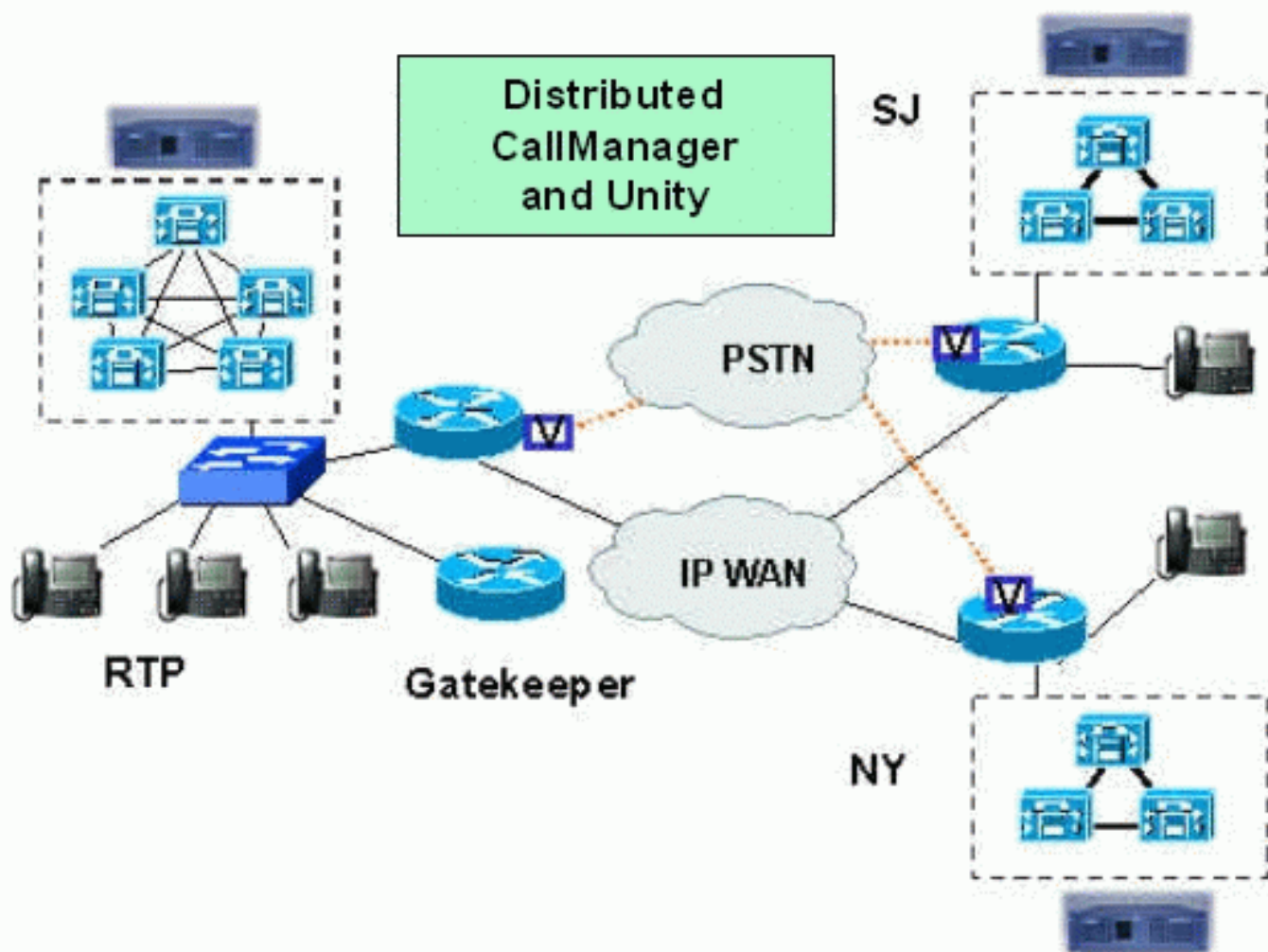
集中的呼叫处理



在集中式呼叫处理中，一个 Cisco CallManager 或 Cisco CallManager 集群可以控制所有 IP 电话设备。此方法的好处在于只有一个集中管理点。缺点是所有 IP 电话和 Skinny 设备都必须连接此 Cisco CallManager 才能进行呼叫。因此，如果 IP 连接中断（例如，如果 WAN 断开），用户便会陷入困境，无法进行任何呼叫。生活热线服务（如 911）必须通过某种其他机制提供。对于这种情况，基于位置的呼叫准入控制可能是首选方案。

从上一个图表，您能看到记住那是重要的？9 什么时候用于拨出？Cisco CallManager 选择根据用户的地理位置的网关。您还可以按照如下方式设置工具，如果某一网关没有任何空闲资源可通过 PSTN 进行呼叫，则使用网关作为远程站点。另一个注意事项是，如果 IP WAN 没有足够的带宽进行高质量的 IP 语音 (VoIP) 呼叫，应允许用户通过 PSTN 在站点间进行长途呼叫。其他需要考虑的事项包括每个人是否都有权进行呼叫、是否为长途呼叫、国际呼叫或办公室间的呼叫。为了避免将来产生不必要的麻烦，最好在开始前设置一些基本的用户级别。这样，更改权利就会变得简单得多。由于用户访问涉及分区和呼叫搜索空间的设置，而这两项随后将应用于单个 DN 和设备，因此用户级别的设置必须经过仔细考量。最新更改可能要求用户修改设备或 DN。

分布式呼叫处理



在分布式呼叫处理中，每个 IP 电话或 Skinny 设备都会在本地的 Cisco CallManager 或 Cisco CallManager 集群中注册。如果这两项都有可到达 PSTN 的本地网关，那么即使 IP WAN 断开，用户仍然可以呼叫本地号码并通过 PSTN 呼叫其他站点的用户。只有基于 Cisco IOS 的网守呼叫准入控制适用于这种情况。

每个 Cisco CallManager 都保持自己的拨号方案，因此必须单独进行管理和监督。

假设 RTP 中的某位用户试图拨 9 以访问外部 PSTN 线路，但当前无线路可用。我们不建议您将呼

叫路由至 NY Cisco CallManager，因为 NY 中的拨号方案不适用于在 RTP 中放置呼叫的用户。在这种情况下，例如，RTP 用户必须在拨 1 的基础上加拨 RTP 区域代码，以便在 RTP 中放置本地呼叫，但 Cisco CallManager 服务器无法向用户通知此要求。尽管在 RTP 区域中为每个三位数字前缀执行被叫方转换（以附加必需的 1 + 区域代码）可能是可行的，但此解决方案不可扩展。

此外，每个 Cisco CallManager（集群）都需要有自己的语音邮件 (Cisco Unity) 实例。对于此部署模型，需配备网守用于准入控制。如果在 WAN 和会议中使用压缩，每个站点都必须配备用于转码的 Cisco CallManager、语音邮件和数字信号处理器 (DSP) 资源。

安装检查表

- 选择描述性分区名称。如果分区名称是类似 *widget* 和 *foobar* 的无意义词语，对无法发出长途呼叫的系统进行故障排除将非常困难。
- 请记住，诸如呼叫暂留和呼叫代答的功能也是分区的一部分。它们通常被留在空分区或默认分区中，因此每个人都有权进行访问。它们也可被分配给基本用户级别，如本文档稍后提供的[示例](#)中介绍的 NYInternalCalls。
- 对于必须禁止访问的每种模式（如 **9.@**，其中 AREA-CODE=900），阻止对某些区域代码和号码的访问要使用单独的分区（如本文档稍后提供的[示例](#)中介绍的 Block900）完成。由于这与采用 AREA-CODE EXISTS 的简单的 **9.@** 相比匹配更精确，而路由模式配置为阻止与此模式匹配的所有内容而不进行路由，因此可使用过滤。

以下是您在开始进行任何配置之前需要考虑的最常见项目：

- 您计划使用哪种呼叫处理模型：[集中式](#)还是[分布式](#)？
- 您计划使用哪种类型的呼叫准入控制：Cisco IOS 网守还是基于位置？
- 网络服务质量 (QoS) 是否已在网络中实施？（如有必要，还可包括支持实时流量、优先级机制、流量整形和分段的基础设施改进。）
- 是否有需要连接的现有 PBX，或者是否要连接到本地交换运营商 (LEC) 或长途运营商 (IXC)？如果是，您计划使用哪种信令机制：PRI、Q.SIG 还是随路信令 (CAS)？请记住，并非所有机制都能提供相同的功能（如 ANI 或 CallerID）。
- 如果连接到 PBX，请记住所有需要发出外部呼叫（本地和长途）的访问码，以及所有 PBX 分机的特殊访问码。
- 如果您有多个受同一 Cisco CallManager 控制的位置（如[集中式呼叫处理](#)模型中的情况），请决定是否需要下列任何回退：**本地呼叫回退**？如果您的本地网关不可用，请路由呼叫到网关在远程站点并且做长途呼叫。**Toll Bypass fallback**？如果远程网关是不可用做在远程区域代码的一次本地呼叫，请路由呼叫作为长途呼叫通过您的本地网关。**长距离和国际呼叫fallback**？如果本地网关是不可用做长距离或国际呼叫，请通过网关路由呼叫在远程位置。
- 请记住每个位置的所有区域代码，以及它们是否采用 7 位或 10 位数字拨号。
- 请注意直接拨入 (DID) 号码系列已分配给各个远程站点的线路。另请注意用作相应位置主要接入号码（如果有）的 7 位或 10 位号码。
- 请记住每个 PBX 提供的分机（**1XXX** 或 **29XX**）。
- 您希望向 PBX 或 PSTN 提供哪种主叫方 ID：总计号码、完整号码还是目录号码？
- 列出您要区分的所有特殊用户组（本文档稍后提供的[示例](#)包括 NYLocalCalls、NYTollFreeCalls、NYLongDistanceCalls、NYInternationalCalls、Block900Calls、RTPCallsOnly、NYInternalOnly 和 NY911Calls）。这些特殊用户组将成为分区并允许您创建访问组和级别。请确保对这些组进行仔细的考量，因为从长远来看，计划周密的组会为您节省大量时间。**注意**：确保使用描述性名称（包括站点名称和访问权限），即使您当前不需要拥有多个站点也是如此。对于大多数情况，我们建议您以 **CompanyNameSiteNameAccessPrivilege** 的形式使用分区名称。例如，使用类似“CiscoRTP911Calls”或

“AcmeNewYorkLongDistanceCalls”形式的分区名称。

- 创建“用户访问级别”，将先前步骤中的分区组合在一起。这些分区将成为呼叫搜索空间，如下面的示例表所示：
- 在北美地区，我们通常推荐您使用 1XXX 或 29XXX 指定内部 PBX 分机或其他 IP 电话。对于外部呼叫，应在访问码后使用 @ 占位符，如 8.@ 或 9.@"。

如果您将上述所有事项考虑在内，那么使用拨号方案向导着手开发复杂的拨号方案就会变得更加简单。完成下列步骤以使用此工具：

1. 从没有安装任何分区、呼叫搜索空间、路由列表、路由组、路由过滤器或路由模式的全新计算机开始操作。如果您已创建了上述某些内容，最好先将其删除。
2. 创建所有网关：H.323网关？Cisco IOS路由器是哪些或，在一个[分布式型号](#)，其他思科是否是 CallManager？并且其他模拟或数字网关。
3. 转到路由方案向导并按说明完成操作。查看前一列表，以提前准备回答问题。拨号方案将自动创建。

注意： 向导无法设置过滤。在向导创建完所有内容之后，您可以很轻松地返回并添加 Block900numbers 过滤器。

NANP 标记

标记名称	示例编号	说明
AREA-CODE	1 214 555 1212	11 位长途呼叫中的区域代码。
COUNTRY-CODE	01 1 33 1234 56 #	国际呼叫中的国家代码。
END-OF-DIALING	01 1 33 1234 56 #	用于取消国际呼叫中的数字间超时的 # 键。
INTERNATIONAL-ACCESS	01 1 33 1234 56 #	国际呼叫的初始位 01。
INTERNATIONAL-DIRECT-DIAL	01 1 33 1234 56 #	表示国际呼叫中直拨组成部分的数字。
INTERNATIONAL-OPERATOR	01 0	表示国际呼叫中运营商组成部分的数字。
LOCAL-AREA-CODE	214 555 1212	10 位本地呼叫中的区域代码。
LOCAL-DIRECT-	1	某些 7 位本地呼叫所需的

DIAL	555 1212	初始位 1。
LOCAL-OPERATOR	0 555 1212	由运营商协助的直拨呼叫所需的初始位 0。
LONG-DISTANCE-DIRECT-DIAL	1 214 555 1212	长途直拨呼叫所需的初始位 1。
LONG-DISTANCE-OPERATOR	0 214 555 1212	由运营商协助的长途呼叫所需的初始位 0。
NATIONAL-NUMBER	01 1 333 1234 56 #	国际呼叫中的国内号码组成部分。
OFFICE-CODE	1 214 555 1212	北美洲呼叫中的办公室或交换代码。
SATELLITE-SERVICE	01 1 881 4 1234 #	与对卫星国家代码的呼叫关联的特定值。
服务	1 411	对本地电话提供商服务的访问。
用户	1 214 555 1212	由给定交换服务提供的特定分机。
转接网络	101 0321 1 214 555 1212	长途运营商代码。
TRANSIT-NETWORK-ESCAPE	101 0321 1 214 555 1212	用于输入长途运营商代码的转义序列。

[踪迹全文](#)

[呼叫 1000-1111 \(短\)](#)

!--- Each timestamped line of output appears on one line.12:44:24.625 Cisco
CallManager|StationInit - InboundStim - StimulusMessageID stimulus: Line(9)
Instance: 1 tcpHandle=0x53563d012:44:24.625 Cisco CallManager|StationInit - InboundStim -
OffHookMessageID tcpHandle=0x53563d012:44:24.625 Cisco CallManager|StationD -
StimLine: OnHook --- OnHook12:44:24.625 Cisco CallManager|StationD -
stationOutputSetSpeakerMode: 1 tcpHandle=0x53563d012:44:24.625 Cisco
CallManager|StationD - stationOutputDisplayText tcpHandle=0x53563d0,
Display=100012:44:24.625 Cisco CallManager|StationD - stationOutputDisplayText
tcpHandle=0x53563d0, Display=100012:44:24.640 Cisco CallManager|StationD - stationOutputSetLamp
stim: 9=Line instance=1 lampMode=LampOn tcpHandle=0x53563d012:44:24.640 Cisco
CallManager|StationD - stationOutputCallState tcpHandle=0x53563d012:44:24.640 Cisco
CallManager|StationD - stationOutputDisplayPromptStatus
tcpHandle=0x53563d012:44:24.640 Cisco CallManager|StationD - stationOutputSelectSoftKeys
tcpHandle=0x53563d012:44:24.640 Cisco CallManager|StationD - stationOutputActivateCallPlane
tcpHandle=0x53563d012:44:24.640 Cisco CallManager|StationD - stationOutputStartTone:
33=InsideDialTone tcpHandle=0x53563d012:44:25.687 Cisco CallManager|StationInit - InboundStim -
KeypadButtonMessageID kpButton: 1 tcpHandle=0x53563d012:44:25.687 Cisco CallManager|StationD -
stationOutputStopTone tcpHandle=0x53563d012:44:25.687 Cisco CallManager|StationD -
stationOutputSelectSoftKeys tcpHandle=0x53563d012:44:26.078 Cisco
CallManager|StationInit - InboundStim - KeypadButtonMessageID kpButton: 1
tcpHandle=0x53563d012:44:26.468 Cisco CallManager|StationInit - InboundStim -
KeypadButtonMessageID kpButton: 1 tcpHandle=0x53563d012:44:26.828 Cisco CallManager|StationInit
- InboundStim - KeypadButtonMessageID kpButton: 1 tcpHandle=0x53563d012:44:26.828
Cisco CallManager|Locations:Orig=0 BW=-1Dest=0 BW=-1 (-1 implies infinite bw
available)12:44:26.828 Cisco CallManager|StationD - stationOutputCallState
tcpHandle=0x53294d812:44:26.828 Cisco CallManager|StationD - stationOutputCallInfo
CallingPartyName=Markus (1000), CallingParty=1000, CalledPartyName=Dave (1111),
CalledParty=1111, tcpHandle=0x53294d812:44:26.828 Cisco CallManager|StationD -
stationOutputSetLamp stim: 9=Line instance=3 lampMode=LampBlink
tcpHandle=0x53294d812:44:26.828 Cisco CallManager|StationD - stationOutputSetRinger:
2=InsideRing tcpHandle=0x53294d812:44:26.828 Cisco CallManager|StationD -
stationOutputDisplayNotify tcpHandle=0x53294d812:44:26.828 Cisco
CallManager|StationD - stationOutputDisplayPromptStatus
tcpHandle=0x53294d812:44:26.828 Cisco CallManager|StationD - stationOutputSelectSoftKeys
tcpHandle=0x53294d812:44:26.828 Cisco CallManager|StationD - stationOutputCallState
tcpHandle=0x53563d012:44:26.828 Cisco CallManager|StationD - stationOutputCallInfo
CallingPartyName=Markus (1000), CallingParty=1000, CalledPartyName=,
CalledParty=1111, tcpHandle=0x53563d012:44:26.843 Cisco CallManager|StationD -
stationOutputCallInfo CallingPartyName=Markus (1000), CallingParty=1000,
CalledPartyName=Dave (1111), CalledParty=1111, tcpHandle=0x53563d012:44:26.843 Cisco
CallManager|StationD - stationOutputStartTone: 36=AlertingTone
tcpHandle=0x53563d012:44:26.843 Cisco CallManager|StationD - stationOutputCallState
tcpHandle=0x53563d012:44:26.843 Cisco CallManager|StationD - stationOutputSelectSoftKeys
tcpHandle=0x53563d012:44:26.843 Cisco CallManager|StationD - stationOutputDisplayPromptStatus
tcpHandle=0x53563d012:44:27.937 Cisco CallManager|StationInit - New connection accepted.
DeviceName=, TCPHandle=0x56b55f0, Socket=0x51c, IPAddr=10.120.99.52, Port=49818,
Device Controller=[0,0,0]12:44:28.078 Cisco CallManager|StationInit - Processing StationReg.
regCount: 1 DeviceName=MTP00D097386420, TCPHandle=0x56b55f0, Socket=0x51c,
IPAddr=10.120.99.52, Port=49818, Device Controller=[1,45,103]12:44:28.078 Cisco
CallManager|StationInit - InboundStim - IpPortMessageID: 0(0x0)
tcpHandle=0x56b55f012:44:28.187 Cisco CallManager|StationInit - StationCloseReq received:
0x56b55f012:44:28.187 Cisco CallManager|**** StationInit - Socket Broken.
DeviceName=, TCPHandle=0x56b55f0, Socket=0x51c, IPAddr=10.120.99.52, Port=0xc29a,
Device Controller=[0,0,0]12:44:28.187 Cisco CallManager|StationInit - Closing Station connection
DeviceName=MTP00D097386420, TCPHandle=0x56b55f0, Socket=0x51c, IPAddr=10.120.99.52,
Port=49818, Device Controller=[1,45,103]12:44:28.187 Cisco CallManager|StationInit -
StationCloseReq received: 0x56b55f012:44:28.843 Cisco CallManager|StationInit -
InboundStim - OffHookMessageID tcpHandle=0x53294d812:44:28.843 Cisco
CallManager|StationD - stationOutputClearNotify tcpHandle=0x53294d812:44:28.843
Cisco CallManager|StationD - stationOutputSetRinger: 1=RingOff
tcpHandle=0x53294d812:44:28.859 Cisco CallManager|StationD - stationOutputSetLamp
stim: 9=Line instance=3 lampMode=LampOn tcpHandle=0x53294d812:44:28.859 Cisco
CallManager|StationD - stationOutputCallState tcpHandle=0x53294d812:44:28.859 Cisco
CallManager|StationD - stationOutputActivateCallPlane

tcpHandle=0x53294d812:44:28.859 Cisco CallManager|StationD - stationOutputStopTone
tcpHandle=0x53563d012:44:28.859 Cisco CallManager|StationD - stationOutputOpenReceiveChannel
tcpHandle=0x53563d0 myIP: 3963780a (10.120.99.57)12:44:28.859 Cisco CallManager|StationD -
ConferenceID: 0 msecPacketSize: 20
compressionType: (4)Media_Payload_G711Ulaw64k12:44:28.859 Cisco CallManager|StationD -
stationOutputStopTone tcpHandle=0x53294d812:44:28.859 Cisco CallManager|StationD -
stationOutputOpenReceiveChannel tcpHandle=0x53294d8 myIP: 3863780a
(10.120.99.56)12:44:28.859 Cisco CallManager|StationD - ConferenceID: 0 msecPacketSize: 20
compressionType: (4)Media_Payload_G711Ulaw64k12:44:28.859 Cisco CallManager|StationD -
stationOutputStopTone tcpHandle=0x53294d812:44:28.859 Cisco CallManager|StationD -
stationOutputCallState tcpHandle=0x53294d812:44:28.859 Cisco CallManager|StationD -
stationOutputCallInfo CallingPartyName=Markus (1000), CallingParty=1000,
CalledPartyName=Dave (1111), CalledParty=1111, tcpHandle=0x53294d812:44:28.859 Cisco
CallManager|StationD - stationOutputSelectSoftKeys tcpHandle=0x53294d812:44:28.859
Cisco CallManager|StationD - stationOutputDisplayPromptStatus
tcpHandle=0x53294d812:44:28.859 Cisco CallManager|StationD - stationOutputStopTone
tcpHandle=0x53563d012:44:28.859 Cisco CallManager|StationD - stationOutputCallState
tcpHandle=0x53563d012:44:28.859 Cisco CallManager|StationD - stationOutputCallInfo
CallingPartyName=Markus (1000), CallingParty=1000, CalledPartyName=Dave (1111),
CalledParty=1111, tcpHandle=0x53563d012:44:28.859 Cisco CallManager|StationD -
stationOutputSelectSoftKeys tcpHandle=0x53563d012:44:28.859 Cisco
CallManager|StationD - stationOutputDisplayPromptStatus
tcpHandle=0x53563d012:44:29.015 Cisco CallManager|StationInit - InboundStim -
StationOpenReceiveChannelAckID tcpHandle=0x53294d8, Status=0, IpAddr=0x3863780a,
Port=20106, PartyID=412:44:29.015 Cisco CallManager|StationD -
stationOutputStartMediaTransmission tcpHandle=0x53563d0 myIP: 3963780a
(10.120.99.57)12:44:29.015 Cisco CallManager|StationD - RemoteIpAddr: 3863780a (10.120.99.56)
RemoteRtpPortNumber: 20106 msecPacketSize: 20
compressionType: (4)Media_Payload_G711Ulaw64k12:44:29.046 Cisco CallManager|StationInit -
InboundStim - StationOpenReceiveChannelAckID tcpHandle=0x53563d0, Status=0,
IpAddr=0x3963780a, Port=17412, PartyID=312:44:29.046 Cisco CallManager|StationD -
stationOutputStartMediaTransmission tcpHandle=0x53294d8 myIP: 3863780a
(10.120.99.56)12:44:29.046 Cisco CallManager|StationD - RemoteIpAddr: 3963780a (10.120.99.57)
RemoteRtpPortNumber: 17412 msecPacketSize: 20
compressionType: (4)Media_Payload_G711Ulaw64k12:44:29.062 Cisco CallManager|Locations:Orig=0 BW=-
1Dest=0 BW=-1 (-1 implies infinite bw available)12:44:29.062 Cisco
CallManager|Locations:Orig=0 BW=-1Dest=0 BW=-1 (-1 implies infinite bw
available)12:44:31.203 Cisco CallManager|StationInit - InboundStim - OnHookMessageID
tcpHandle=0x53294d812:44:31.218 Cisco CallManager|StationD - stationOutputSetSpeakerMode: 2
tcpHandle=0x53294d812:44:31.218 Cisco CallManager|StationD - stationOutputClearStatus
tcpHandle=0x53294d812:44:31.218 Cisco CallManager|StationD - stationOutputCallState
tcpHandle=0x53294d812:44:31.218 Cisco CallManager|StationD - stationOutputSelectSoftKeys
tcpHandle=0x53294d812:44:31.218 Cisco CallManager|StationD - stationOutputDisplayPromptStatus
tcpHandle=0x53294d812:44:31.218 Cisco CallManager|StationD - stationOutputActivateCallPlane
tcpHandle=0x53294d812:44:31.218 Cisco CallManager|StationD - stationOutputSetLamp
stim: 9=Line instance=3 lampMode=LampOff tcpHandle=0x53294d812:44:31.218 Cisco
CallManager|StationD - stationOutputStationDefineTimeDate
tcpHandle=0x53294d812:44:31.218 Cisco CallManager|StationD - stationOutputStopTone
tcpHandle=0x53294d812:44:31.218 Cisco CallManager|Locations:Orig=0 BW=-1Dest=0 BW=-1
(-1 implies infinite bw available)12:44:31.218 Cisco CallManager|Locations:Orig=0 BW=-1Dest=0
BW=-1 (-1 implies infinite bw available)12:44:31.218 Cisco CallManager|StationD -
stationOutputCloseReceiveChannel tcpHandle=0x53563d0 myIP: 3963780a
(10.120.99.57)12:44:31.218 Cisco CallManager|StationD - stationOutputStopMediaTransmission
tcpHandle=0x53563d0 myIP: 3963780a (10.120.99.57)12:44:31.218 Cisco CallManager|StationD -
stationOutputCloseReceiveChannel tcpHandle=0x53294d8 myIP: 3863780a
(10.120.99.56)12:44:31.218 Cisco CallManager|StationD - stationOutputStopMediaTransmission
tcpHandle=0x53294d8 myIP: 3863780a (10.120.99.56)12:44:31.218 Cisco CallManager|StationD -
stationOutputStationDefineTimeDate tcpHandle=0x53563d012:44:31.218 Cisco
CallManager|StationD - stationOutputSetSpeakerMode: 2
tcpHandle=0x53563d012:44:31.218 Cisco CallManager|StationD - stationOutputClearStatus
tcpHandle=0x53563d012:44:31.218 Cisco CallManager|StationD - stationOutputCallState
tcpHandle=0x53563d012:44:31.218 Cisco CallManager|StationD - stationOutputSelectSoftKeys
tcpHandle=0x53563d012:44:31.218 Cisco CallManager|StationD - stationOutputDisplayPromptStatus
tcpHandle=0x53563d012:44:31.218 Cisco CallManager|StationD - stationOutputActivateCallPlane


```
tcpHandle=0x53563d012:44:31.218 Cisco CallManager|StationD - stationOutputSetLamp
stim: 9=Line instance=1 lampMode=LampOff tcpHandle=0x53563d012:44:31.218 Cisco
CallManager|StationD - stationOutputStationDefineTimeDate
tcpHandle=0x53563d012:44:31.218 Cisco CallManager|StationD - stationOutputStopTone
tcpHandle=0x53563d012:44:37.937 Cisco CallManager|StationInit - New connection accepted.
DeviceName=, TCPHandle=0x56b5668, Socket=0x51c, IPAddr=10.120.99.52, Port=49819,
Device Controller=[0,0,0]12:44:37.953 Cisco CallManager|StationInit - Processing StationReg.
regCount: 1 DeviceName=MTP00D097386420, TCPHandle=0x56b5668, Socket=0x51c,
IPAddr=10.120.99.52, Port=49819, Device Controller=[1,45,104]12:44:37.953 Cisco
CallManager|StationInit - InboundStim - IpPortMessageID: 0(0x0)
tcpHandle=0x56b566812:44:38.093 Cisco CallManager|StationInit - StationCloseReq
received: 0x56b566812:44:38.093 Cisco CallManager|***** StationInit - Socket Broken.
DeviceName=, TCPHandle=0x56b5668, Socket=0x51c, IPAddr=10.120.99.52, Port=0xc29b,
Device Controller=[0,0,0]12:44:38.093 Cisco CallManager|StationInit - Closing Station connection
DeviceName=MTP00D097386420, TCPHandle=0x56b5668, Socket=0x51c, IPAddr=10.120.99.52,
Port=49819, Device Controller=[1,45,104]12:44:38.093 Cisco CallManager|StationInit -
StationCloseReq received: 0x56b5668
```

呼叫 1000-1111 (完整)

```
!--- Each timestamped line of output appears on one line.12:42:43.734 Cisco
CallManager|StationInit - InboundStim - StimulusMessageID stimulus: Line(9)
Instance: 1 tcpHandle=0x53563d012:42:43.734 Cisco CallManager|StationD - StimLine:
OnHook --- OnHook12:42:43.734 Cisco CallManager|StationD - stationOutputSetSpeakerMode: 1
tcpHandle=0x53563d012:42:43.734 Cisco CallManager|StationInit - InboundStim - OffHookMessageID
tcpHandle=0x53563d012:42:43.734 Cisco CallManager|StationD - stationOutputDisplayText
tcpHandle=0x53563d0, Display=100012:42:43.734 Cisco CallManager|StationD -
stationOutputDisplayText tcpHandle=0x53563d0, Display=100012:42:43.734 Cisco
CallManager|StationD - stationOutputSetLamp stim: 9=Line instance=1 lampMode=LampOn
tcpHandle=0x53563d012:42:43.734 Cisco CallManager|StationD - stationOutputCallState
tcpHandle=0x53563d012:42:43.734 Cisco CallManager|StationD - stationOutputDisplayPromptStatus
tcpHandle=0x53563d012:42:43.734 Cisco CallManager|StationD - stationOutputSelectSoftKeys
tcpHandle=0x53563d012:42:43.734 Cisco CallManager|StationD - stationOutputActivateCallPlane
tcpHandle=0x53563d012:42:43.734 Cisco CallManager|Digit analysis: match(fqcn="",
cn="1000", pss="", dd="")12:42:43.734 Cisco CallManager|Digit analysis: analysis
results12:42:43.750 Cisco CallManager|PretransformCallingPartyNumber=1000
|CallingPartyNumber=1000 |DialingPartition= |DialingPattern=
|DialingRoutePatternRegularExpression= |DialingWhere=
|PatternType=Unknown |PotentialMatches=PotentialMatchesExist
|DialingSdlProcessId=(0,0,0) |PretransformDigitString=
|PretransformTagsList= |PretransformPositionalMatchList=
|CollectedDigits= |TagsList= |PositionalMatchList=
|RouteBlockFlag=BlockThisPattern |InterceptPartition= |InterceptPattern=
|InterceptWhere= |InterceptSdlProcessId=(1,82,1)
|InterceptSsType=16777221 |InterceptSsKey=786412:42:43.750 Cisco
CallManager|StationD - stationOutputStartTone: 33=InsideDialTone
tcpHandle=0x53563d012:42:45.093 Cisco CallManager|StationInit - InboundStim -
KeypadButtonMessageID kpButton: 1 tcpHandle=0x53563d012:42:45.093 Cisco CallManager|StationD -
stationOutputStopTone tcpHandle=0x53563d012:42:45.093 Cisco CallManager|StationD -
stationOutputSelectSoftKeys tcpHandle=0x53563d012:42:45.093 Cisco CallManager|Digit
analysis: match(fqcn="", cn="1000", pss="", dd="1")12:42:45.093 Cisco
CallManager|Digit analysis: potentialMatches=PotentialMatchesExist12:42:45.453 Cisco
CallManager|StationInit - InboundStim - KeypadButtonMessageID kpButton: 1
tcpHandle=0x53563d012:42:45.453 Cisco CallManager|Digit analysis: match(fqcn="",
cn="1000", pss="", dd="11")12:42:45.453 Cisco CallManager|Digit analysis:
potentialMatches=PotentialMatchesExist12:42:45.609 Cisco CallManager|CMPProcMon - -----Entered
Router Verification12:42:45.609 Cisco CallManager|CMPProcMon - ----Exited Router
Verification12:42:45.656 Cisco CallManager|StationInit - InboundStim - KeepAliveMessage -
Send KeepAlive to Device Controller. DeviceName=SEP003094C2635E,
TCPHandle=0x53563d0, Socket=0x528, IPAddr=10.120.99.57, Port=50491, Device
Controller=[1,85,4]12:42:45.656 Cisco CallManager|StationD - stationOutputKeepAliveAck
tcpHandle=0x53563d012:42:45.781 Cisco CallManager|StationInit - InboundStim -
KeypadButtonMessageID kpButton: 1 tcpHandle=0x53563d012:42:45.781 Cisco CallManager|Digit
analysis: match(fqcn="", cn="1000", pss="", dd="111")12:42:45.781 Cisco
```

CallManager|Digit analysis: potentialMatches=PotentialMatchesExist12:42:45.984 Cisco
CallManager|StationInit - New connection accepted. DeviceName=, TCPHandle=0x56b8cf0,
Socket=0x544, IPAddr=10.120.99.52, Port=49807, Device Controller=[0,0,0]12:42:46.031
Cisco CallManager|StationInit - Processing StationReg. regCount: 1
DeviceName=MTP00D097386420, TCPHandle=0x56b8cf0, Socket=0x544, IPAddr=10.120.99.52,
Port=49807, Device Controller=[1,45,93]12:42:46.031 Cisco CallManager|StationInit -
InboundStim - IpPortMessageID: 0(0x0) tcpHandle=0x56b8cf012:42:46.109 Cisco
CallManager|StationInit - InboundStim - KeypadButtonMessageID kpButton: 1
tcpHandle=0x53563d012:42:46.156 Cisco CallManager|Digit analysis: match(fqcn="",
cn="1000", pss="", dd="1111")12:42:46.156 Cisco CallManager|Digit analysis: analysis
results12:42:46.156 Cisco CallManager| |PretransformCallingPartyNumber=1000
|CallingPartyNumber=1000 |DialingPartition= |DialingPattern=1111
|DialingRoutePatternRegularExpression=(1111) |DialingWhere=
|PatternType=Enterprise |PotentialMatches=NoPotentialMatchesExist
|DialingSdlProcessId=(1,38,15) |PretransformDigitString=1111
|PretransformTagsList=SUBSCRIBER |PretransformPositionalMatchList=1111
|CollectedDigits=1111 |TagsList=SUBSCRIBER |PositionalMatchList=1111
|RouteBlockFlag=RouteThisPattern |InterceptPartition= |InterceptPattern=
|InterceptWhere= |InterceptSdlProcessId=(0,0,0) |InterceptSsType=0
|InterceptSsKey=012:42:46.156 Cisco CallManager|Locations:Orig=0 BW=-1Dest=0 BW=-1
(-1 implies infinite bw available)12:42:46.156 Cisco CallManager|StationD -
stationOutputCallState tcpHandle=0x53294d812:42:46.156 Cisco CallManager|StationD -
stationOutputCallInfo CallingPartyName=Markus (1000), CallingParty=1000,
CalledPartyName=Dave (1111), CalledParty=1111, tcpHandle=0x53294d812:42:46.156 Cisco
CallManager|StationD - stationOutputSetLamp stim: 9=Line instance=3
lampMode=LampBlink tcpHandle=0x53294d812:42:46.156 Cisco CallManager|StationD -
stationOutputSetRinger: 2=InsideRing tcpHandle=0x53294d812:42:46.156 Cisco
CallManager|StationD - stationOutputDisplayNotify tcpHandle=0x53294d812:42:46.156
Cisco CallManager|StationD - stationOutputDisplayPromptStatus
tcpHandle=0x53294d812:42:46.156 Cisco CallManager|StationD - stationOutputSelectSoftKeys
tcpHandle=0x53294d812:42:46.156 Cisco CallManager|StationD - stationOutputCallState
tcpHandle=0x53563d012:42:46.156 Cisco CallManager|StationD - stationOutputCallInfo
CallingPartyName=Markus (1000), CallingParty=1000, CalledPartyName=,
CalledParty=1111, tcpHandle=0x53563d012:42:46.156 Cisco CallManager|StationD -
stationOutputCallInfo CallingPartyName=Markus (1000), CallingParty=1000,
CalledPartyName=Dave (1111), CalledParty=1111, tcpHandle=0x53563d012:42:46.156 Cisco
CallManager|StationD - stationOutputStartTone: 36=AlertingTone
tcpHandle=0x53563d012:42:46.156 Cisco CallManager|StationD - stationOutputCallState
tcpHandle=0x53563d012:42:46.156 Cisco CallManager|StationD - stationOutputSelectSoftKeys
tcpHandle=0x53563d012:42:46.156 Cisco CallManager|StationD - stationOutputDisplayPromptStatus
tcpHandle=0x53563d012:42:46.156 Cisco CallManager|NodeId: 1, EventId: 1513 EventClass: 6
EventInfo: Device Initialization Failed, Device Name=<MTP00D097386420>,
Protocol=12:42:47.609 Cisco CallManager|CMPProcMon - -----Entered Router
Verification12:42:47.609 Cisco CallManager|CMPProcMon - ----Exited Router
Verification12:42:48.000 Cisco CallManager|StationInit - InboundStim - OffHookMessageID
tcpHandle=0x53294d812:42:48.000 Cisco CallManager|StationD - stationOutputClearNotify
tcpHandle=0x53294d812:42:48.000 Cisco CallManager|StationD - stationOutputSetRinger:
1=RingOff tcpHandle=0x53294d812:42:48.000 Cisco CallManager|StationD - stationOutputSetLamp
stim: 9=Line instance=3 lampMode=LampOn tcpHandle=0x53294d812:42:48.000 Cisco
CallManager|StationD - stationOutputCallState tcpHandle=0x53294d812:42:48.000 Cisco
CallManager|StationD - stationOutputActivateCallPlane
tcpHandle=0x53294d812:42:48.000 Cisco CallManager|ConnectionManager -
wait_AuConnectRequest(16777231,16777232): INFORM MEDIA LAYER12:42:48.000 Cisco
CallManager|ConnectionManager - storeMediaInfo(16777231): ADD NEW ENTRY, tail ==
112:42:48.000 Cisco CallManager|ConnectionManager - storeMediaInfo(16777232): ADD
NEW ENTRY, tail == 212:42:48.000 Cisco CallManager|MediaCoordinator -
wait_AuConnectRequest()12:42:48.000 Cisco CallManager|MediaCoordinator - wait_AuConnectRequest -
starting MediaManager w/ existing (0) connections12:42:48.015 Cisco CallManager|MediaCoordinator
- wait_AuConnectRequest - new MediaManager(44,1) started12:42:48.015 Cisco
CallManager|MediaManager(1) started12:42:48.015 Cisco CallManager|MediaManager -
wait_AuConnectRequest12:42:48.015 Cisco CallManager|MediaManager - wait_AuConnectRequest -
party1(16777231), party2(16777232), proxies=0, connections=1, current
proxies=012:42:48.015 Cisco CallManager|MediaManager - wait_AuConnectRequest -
normal connection12:42:48.031 Cisco CallManager|MediaManager - wait_AuConnectReply12:42:48.031

Cisco CallManager|MediaManager - wait_AuConnectReply - received 1 responses,
fowarding reply for party1(16777231) and party2(16777232)12:42:48.031 Cisco
CallManager|MediaCoordinator - wait_AuConnectReply12:42:48.031 Cisco
CallManager|ConnectionManager - wait_AuConnectReply(16777231,16777232)12:42:48.031
Cisco CallManager|StationD - stationOutputStopTone tcpHandle=0x53563d012:42:48.031
Cisco CallManager|StationD - stationOutputOpenReceiveChannel tcpHandle=0x53563d0
myIP: 3963780a (10.120.99.57)12:42:48.031 Cisco CallManager|StationD - ConferenceID: 0
msecPacketSize: 20 compressionType:(4)Media_Payload_G711Ulaw64k12:42:48.031 Cisco
CallManager|StationD - stationOutputStopTone tcpHandle=0x53294d812:42:48.031 Cisco
CallManager|StationD - stationOutputOpenReceiveChannel tcpHandle=0x53294d8 myIP:
3863780a (10.120.99.56)12:42:48.031 Cisco CallManager|StationD - ConferenceID: 0 msecPacketSize:
20 compressionType:(4)Media_Payload_G711Ulaw64k12:42:48.046 Cisco
CallManager|StationD - stationOutputStopTone tcpHandle=0x53294d812:42:48.046 Cisco
CallManager|StationD - stationOutputCallState tcpHandle=0x53294d812:42:48.046 Cisco
CallManager|StationD - stationOutputCallInfo CallingPartyName=Markus (1000),
CallingParty=1000, CalledPartyName=Dave (1111), CalledParty=1111,
tcpHandle=0x53294d812:42:48.046 Cisco CallManager|StationD - stationOutputSelectSoftKeys
tcpHandle=0x53294d812:42:48.046 Cisco CallManager|StationD - stationOutputDisplayPromptStatus
tcpHandle=0x53294d812:42:48.046 Cisco CallManager|StationD - stationOutputStopTone
tcpHandle=0x53563d012:42:48.046 Cisco CallManager|StationD - stationOutputCallState
tcpHandle=0x53563d012:42:48.046 Cisco CallManager|StationD - stationOutputCallInfo
CallingPartyName=Markus (1000), CallingParty=1000, CalledPartyName=Dave (1111),
CalledParty=1111, tcpHandle=0x53563d012:42:48.046 Cisco CallManager|StationD -
stationOutputSelectSoftKeys tcpHandle=0x53563d012:42:48.046 Cisco
CallManager|StationD - stationOutputDisplayPromptStatus
tcpHandle=0x53563d012:42:48.156 Cisco CallManager|StationInit - InboundStim -
StationOpenReceiveChannelAckID tcpHandle=0x53563d0, Status=0, IpAddr=0x3963780a,
Port=23706, PartyID=112:42:48.156 Cisco CallManager|StationD -
stationOutputStartMediaTransmission tcpHandle=0x53294d8 myIP: 3863780a
(10.120.99.56)12:42:48.156 Cisco CallManager|StationD - RemoteIpAddr: 3963780a (10.120.99.57)
RemoteRtpPortNumber: 23706 msecPacketSize: 20
compressionType:(4)Media_Payload_G711Ulaw64k12:42:48.218 Cisco CallManager|StationInit -
InboundStim - StationOpenReceiveChannelAckID tcpHandle=0x53294d8, Status=0,
IpAddr=0x3863780a, Port=18218, PartyID=212:42:48.218 Cisco CallManager|MediaManager -
wait_AuConnectInfo12:42:48.218 Cisco CallManager|MediaManager - wait_AuConnectInfo -
recieved response, fowarding12:42:48.218 Cisco CallManager|MediaCoordinator -
wait_AuConnectInfoInd12:42:48.218 Cisco CallManager|StationD -
stationOutputStartMediaTransmission tcpHandle=0x53563d0 myIP: 3963780a
(10.120.99.57)12:42:48.218 Cisco CallManager|StationD - RemoteIpAddr: 3863780a (10.120.99.56)
RemoteRtpPortNumber: 18218 msecPacketSize: 20
compressionType:(4)Media_Payload_G711Ulaw64k12:42:48.218 Cisco CallManager|Locations:Orig=0 BW=-
1Dest=0 BW=-1 (-1 implies infinite bw available)12:42:48.218 Cisco
CallManager|Locations:Orig=0 BW=-1Dest=0 BW=-1 (-1 implies infinite bw
available)12:42:49.609 Cisco CallManager|CMPProcMon - -----Entered Router
Verification12:42:49.609 Cisco CallManager|CMPProcMon - ----Exited Router
Verification12:42:50.765 Cisco CallManager|StationInit - InboundStim - OnHookMessageID
tcpHandle=0x53294d812:42:50.765 Cisco CallManager|StationD - stationOutputSetSpeakerMode: 2
tcpHandle=0x53294d812:42:50.781 Cisco CallManager|StationD - stationOutputClearStatus
tcpHandle=0x53294d812:42:50.781 Cisco CallManager|StationD - stationOutputCallState
tcpHandle=0x53294d812:42:50.781 Cisco CallManager|StationD - stationOutputSelectSoftKeys
tcpHandle=0x53294d812:42:50.781 Cisco CallManager|StationD - stationOutputDisplayPromptStatus
tcpHandle=0x53294d812:42:50.781 Cisco CallManager|StationD - stationOutputActivateCallPlane
tcpHandle=0x53294d812:42:50.781 Cisco CallManager|StationD - stationOutputSetLamp
stim: 9=Line instance=3 lampMode=LampOff tcpHandle=0x53294d812:42:50.781 Cisco
CallManager|StationD - stationOutputStationDefineTimeDate
tcpHandle=0x53294d812:42:50.781 Cisco CallManager|StationD - stationOutputStopTone
tcpHandle=0x53294d812:42:50.781 Cisco CallManager|Locations:Orig=0 BW=-1Dest=0 BW=-1
(-1 implies infinite bw available)12:42:50.781 Cisco CallManager|Locations:Orig=0 BW=-1Dest=0
BW=-1 (-1 implies infinite bw available)12:42:50.781 Cisco
CallManager|ConnectionManager - wait_AuDisconnectRequest(16777232,16777231): STOP
SESSION12:42:50.781 Cisco CallManager|ConnectionManager - storeMediaInfo(16777232):
EXISTING ENTRY DISCOVERED, tail == 212:42:50.781 Cisco CallManager|ConnectionManager -
storeMediaInfo(16777231): EXISTING ENTRY DISCOVERED, tail == 212:42:50.781 Cisco
CallManager|MediaCoordinator - wait_AuDisconnectRequest12:42:50.781 Cisco

```

CallManager|MediaCoordinator - wait_AuDisconnectRequest - sending disconnect to
MediaManager(1)12:42:50.781 Cisco CallManager|MediaManager -
wait_AuDisconnectRequest12:42:50.781 Cisco CallManager|MediaManager - wait_AuDisconnectRequest -
StopSession sending disconnect to (64,1) and remove connection from list12:42:50.796
Cisco CallManager|StationD - stationOutputCloseReceiveChannel tcpHandle=0x53563d0
myIP: 3963780a (10.120.99.57)12:42:50.796 Cisco CallManager|StationD -
stationOutputStopMediaTransmission tcpHandle=0x53563d0 myIP: 3963780a
(10.120.99.57)12:42:50.796 Cisco CallManager|StationD - stationOutputCloseReceiveChannel
tcpHandle=0x53294d8 myIP: 3863780a (10.120.99.56)12:42:50.796 Cisco CallManager|StationD -
stationOutputStopMediaTransmission tcpHandle=0x53294d8 myIP: 3863780a
(10.120.99.56)12:42:50.796 Cisco CallManager|MediaManager - wait_AuDisconnectReply12:42:50.796
Cisco CallManager|MediaManager - wait_AuDisconnectReply - received all disconnect
replies, forwarding a reply for party1(16777232) and party2(16777231)12:42:50.796
Cisco CallManager|MediaCoordinator - wait_AuDisconnectReply12:42:50.796 Cisco
CallManager|MediaCoordinator - wait_AuDisconnectReply - removing MediaManager(1)
from connection list12:42:50.796 Cisco CallManager|ConnectionManager -
wait_AuDisconnectReply(16777232,16777231): STOP SESSION12:42:50.796 Cisco
CallManager|ConnectionManager - deleteMediaInfoEntry(16777232): ENTRY DELETED, tail
== 112:42:50.796 Cisco CallManager|ConnectionManager -
deleteMediaInfoEntry(16777231): ENTRY DELETED, tail == 012:42:50.796 Cisco CallManager|StationD
- stationOutputStationDefineTimeDate tcpHandle=0x53563d012:42:50.796 Cisco
CallManager|StationD - stationOutputSetSpeakerMode: 2
tcpHandle=0x53563d012:42:50.796 Cisco CallManager|StationD - stationOutputClearStatus
tcpHandle=0x53563d012:42:50.796 Cisco CallManager|StationD - stationOutputCallState
tcpHandle=0x53563d012:42:50.812 Cisco CallManager|StationD - stationOutputSelectSoftKeys
tcpHandle=0x53563d012:42:50.812 Cisco CallManager|StationD - stationOutputDisplayPromptStatus
tcpHandle=0x53563d012:42:50.812 Cisco CallManager|StationD - stationOutputActivateCallPlane
tcpHandle=0x53563d012:42:50.812 Cisco CallManager|StationD - stationOutputSetLamp
stim: 9=Line instance=1 lampMode=LampOff tcpHandle=0x53563d012:42:50.812 Cisco
CallManager|StationD - stationOutputStationDefineTimeDate
tcpHandle=0x53563d012:42:50.812 Cisco CallManager|StationD - stationOutputStopTone
tcpHandle=0x53563d0

```

呼叫 1211

```

!--- Each timestamped line of output appears on one line.14:05:34.562 Cisco
CallManager|StationInit - InboundStim - StimulusMessageID stimulus: Line(9)
Instance: 1 tcpHandle=0x53563d014:05:34.562 Cisco CallManager|StationInit -
InboundStim - OffHookMessageID tcpHandle=0x53563d014:05:34.562 Cisco
CallManager|StationD - StimLine: OnHook --- OnHook14:05:34.562 Cisco CallManager|StationD -
stationOutputSetSpeakerMode: 1 tcpHandle=0x53563d014:05:34.562 Cisco
CallManager|StationD - stationOutputDisplayText tcpHandle=0x53563d0,
Display=100014:05:34.562 Cisco CallManager|StationD - stationOutputDisplayText
tcpHandle=0x53563d0, Display=100014:05:34.562 Cisco CallManager|StationD - stationOutputSetLamp
stim: 9=Line instance=1 lampMode=LampOn tcpHandle=0x53563d014:05:34.562 Cisco
CallManager|StationD - stationOutputCallState tcpHandle=0x53563d014:05:34.562 Cisco
CallManager|StationD - stationOutputDisplayPromptStatus
tcpHandle=0x53563d014:05:34.562 Cisco CallManager|StationD - stationOutputSelectSoftKeys
tcpHandle=0x53563d014:05:34.562 Cisco CallManager|StationD - stationOutputActivateCallPlane
tcpHandle=0x53563d014:05:34.562 Cisco CallManager|Digit analysis: match(fqcn="",
cn="1000", pss="", dd="")14:05:34.562 Cisco CallManager|Digit analysis: analysis
results14:05:34.562 Cisco CallManager| |PretransformCallingPartyNumber=1000
|CallingPartyNumber=1000 |DialingPartition= |DialingPattern=
|DialingRoutePatternRegularExpression= |DialingWhere=
|PatternType=Unknown |PotentialMatches=PotentialMatchesExist
|DialingSdlProcessId=(0,0,0) |PretransformDigitString=
|PretransformTagsList= |PretransformPositionalMatchList=
|CollectedDigits= |TagsList= |PositionalMatchList=
|RouteBlockFlag=BlockThisPattern |InterceptPartition= |InterceptPattern=
|InterceptWhere= |InterceptSdlProcessId=(1,82,1)
|InterceptSsType=16777221 |InterceptSsKey=786414:05:34.562 Cisco
CallManager|StationD - stationOutputStartTone: 33=InsideDialTone
tcpHandle=0x53563d014:05:34.671 Cisco CallManager|CMPProcMon - -----Entered Router
Verification14:05:34.671 Cisco CallManager|CMPProcMon - ----Exited Router

```

Verification14:05:35.671 Cisco CallManager|StationInit - InboundStim -
KeypadButtonMessageID kpButton: 1 tcpHandle=0x53563d014:05:35.671 Cisco CallManager|StationD -
stationOutputStopTone tcpHandle=0x53563d014:05:35.671 Cisco CallManager|StationD -
stationOutputSelectSoftKeys tcpHandle=0x53563d014:05:35.671 Cisco CallManager|Digit
analysis: match(fqcn="", cn="1000", pss="", dd="1")14:05:35.671 Cisco
CallManager|Digit analysis: potentialMatches=PotentialMatchesExist14:05:36.125 Cisco
CallManager|StationInit - InboundStim - KeypadButtonMessageID kpButton: 2
tcpHandle=0x53563d014:05:36.125 Cisco CallManager|Digit analysis: match(fqcn="",
cn="1000", pss="", dd="12")14:05:36.125 Cisco CallManager|Digit analysis:
potentialMatches=PotentialMatchesExist14:05:36.578 Cisco CallManager|StationInit - New
connection accepted. DeviceName=, TCPHandle=0x56c7818, Socket=0x5c0,
IPAddr=10.120.99.52, Port=49542, Device Controller=[0,0,0]14:05:36.578 Cisco
CallManager|StationInit - Processing StationReg. regCount: 1
DeviceName=MTP00D097386420, TCPHandle=0x56c7818, Socket=0x5c0, IPAddr=10.120.99.52,
Port=49542, Device Controller=[1,45,578]14:05:36.578 Cisco CallManager|StationInit -
InboundStim - IpPortMessageID: 0(0x0) tcpHandle=0x56c781814:05:36.640 Cisco
CallManager|StationInit - InboundStim - KeypadButtonMessageID kpButton: 1
tcpHandle=0x53563d014:05:36.671 Cisco CallManager|CMPProcMon - -----Entered Router
Verification14:05:36.671 Cisco CallManager|CMPProcMon - ----Exited Router
Verification14:05:36.703 Cisco CallManager|NodeId: 1, EventId: 1506 EventClass: 6
EventInfo: Device not started since a database error occurred when port 0.0 tried to
retrieve its device settings14:05:36.703 Cisco CallManager|StationInit -
StationCloseReq received: 0x56c781814:05:36.703 Cisco CallManager|NodeId: 1, EventId: 1698
EventClass: 4 EventInfo: Station Connection Error. Device
Name=<MTP00D097386420>14:05:36.703 Cisco CallManager|***** StationInit - Socket Broken.
DeviceName=, TCPHandle=0x56c7818, Socket=0x5c0, IPAddr=10.120.99.52, Port=0xc186,
Device Controller=[0,0,0]14:05:36.703 Cisco CallManager|StationInit - Closing Station connection
DeviceName=MTP00D097386420, TCPHandle=0x56c7818, Socket=0x5c0, IPAddr=10.120.99.52,
Port=49542, Device Controller=[1,45,578]14:05:36.703 Cisco CallManager|StationInit -
StationCloseReq received: 0x56c781814:05:36.703 Cisco CallManager|Digit analysis:
match(fqcn="", cn="1000", pss="", dd="121")14:05:36.703 Cisco CallManager|Digit analysis:
potentialMatches=PotentialMatchesExist14:05:36.718 Cisco CallManager|NodeId: 1, EventId: 1513
EventClass: 6 EventInfo: Device Initialization Failed, Device
Name=<MTP00D097386420>, Protocol=14:05:36.843 Cisco CallManager|StationInit - InboundStim -
KeypadButtonMessageID kpButton: 1 tcpHandle=0x53563d014:05:36.843 Cisco CallManager|Digit
analysis: match(fqcn="", cn="1000", pss="", dd="1211")14:05:36.843 Cisco
CallManager|Digit analysis: analysis results14:05:36.843 Cisco CallManager|
|PretransformCallingPartyNumber=1000 |CallingPartyNumber=1000
|DialingPartition= |DialingPattern=1211
|DialingRoutePatternRegularExpression=(1211) |DialingWhere=
|PatternType=Enterprise |PotentialMatches=NoPotentialMatchesExist
|DialingSdlProcessId=(1,38,19) |PretransformDigitString=1211
|PretransformTagsList=SUBSCRIBER |PretransformPositionalMatchList=1211
|CollectedDigits=1211 |TagsList=SUBSCRIBER |PositionalMatchList=1211
|RouteBlockFlag=RouteThisPattern |InterceptPartition= |InterceptPattern=
|InterceptWhere= |InterceptSdlProcessId=(0,0,0) |InterceptSsType=0
|InterceptSsKey=014:05:36.843 Cisco CallManager|Locations:Orig=0 BW=-1Dest=0 BW=-1
(-1 implies infinite bw available)14:05:36.843 Cisco CallManager|StationD -
stationOutputCallState tcpHandle=0x56ca08014:05:36.843 Cisco CallManager|StationD -
stationOutputCallInfo CallingPartyName=Markus (1000), CallingParty=1000,
CalledPartyName=1211, CalledParty=1211, tcpHandle=0x56ca08014:05:36.843 Cisco
CallManager|StationD - stationOutputSetLamp stim: 9=Line instance=4
lampMode=LampBlink tcpHandle=0x56ca08014:05:36.843 Cisco CallManager|StationD -
stationOutputSetRinger: 2=InsideRing tcpHandle=0x56ca08014:05:36.843 Cisco
CallManager|StationD - stationOutputDisplayNotify tcpHandle=0x56ca08014:05:36.843
Cisco CallManager|StationD - stationOutputDisplayPromptStatus
tcpHandle=0x56ca08014:05:36.859 Cisco CallManager|StationD - stationOutputSelectSoftKeys
tcpHandle=0x56ca08014:05:36.859 Cisco CallManager|StationD - stationOutputCallState
tcpHandle=0x53563d014:05:36.859 Cisco CallManager|StationD - stationOutputCallInfo
CallingPartyName=Markus (1000), CallingParty=1000, CalledPartyName=,
CalledParty=1211, tcpHandle=0x53563d014:05:36.859 Cisco CallManager|StationD -
stationOutputCallInfo CallingPartyName=Markus (1000), CallingParty=1000,
CalledPartyName=1211, CalledParty=1211, tcpHandle=0x53563d014:05:36.859 Cisco
CallManager|StationD - stationOutputStartTone: 36=AlertingTone

tcpHandle=0x53563d014:05:36.859 Cisco CallManager|StationD - stationOutputCallState
tcpHandle=0x53563d014:05:36.859 Cisco CallManager|StationD - stationOutputSelectSoftKeys
tcpHandle=0x53563d014:05:36.859 Cisco CallManager|StationD - stationOutputDisplayPromptStatus
tcpHandle=0x53563d014:05:38.671 Cisco CallManager|CMPProcMon - -----Entered Router
Verification14:05:38.671 Cisco CallManager|CMPProcMon - ----Exited Router
Verification14:05:40.218 Cisco CallManager|StationInit - InboundStim - OffHookMessageID
tcpHandle=0x56ca08014:05:40.218 Cisco CallManager|StationD - stationOutputClearNotify
tcpHandle=0x56ca08014:05:40.218 Cisco CallManager|StationD - stationOutputSetRinger:
1=RingOff tcpHandle=0x56ca08014:05:40.218 Cisco CallManager|StationD - stationOutputSetLamp
stim: 9=Line instance=4 lampMode=LampOn tcpHandle=0x56ca08014:05:40.218 Cisco
CallManager|StationD - stationOutputCallState tcpHandle=0x56ca08014:05:40.218 Cisco
CallManager|StationD - stationOutputActivateCallPlane
tcpHandle=0x56ca08014:05:40.218 Cisco CallManager|ConnectionManager -
wait_AuConnectRequest(16777273,16777274): INFORM MEDIA LAYER14:05:40.218 Cisco
CallManager|ConnectionManager - storeMediaInfo(16777273): ADD NEW ENTRY, tail ==
114:05:40.218 Cisco CallManager|ConnectionManager - storeMediaInfo(16777274): ADD
NEW ENTRY, tail == 214:05:40.218 Cisco CallManager|MediaCoordinator -
wait_AuConnectRequest()14:05:40.218 Cisco CallManager|MediaCoordinator -
wait_AuConnectRequest - starting MediaManager w/ existing (0)
connections14:05:40.218 Cisco CallManager|MediaCoordinator - wait_AuConnectRequest -
new MediaManager(44,6) started14:05:40.218 Cisco CallManager|MediaManager(6) started14:05:40.218
Cisco CallManager|MediaManager - wait_AuConnectRequest14:05:40.218 Cisco
CallManager|MediaManager - wait_AuConnectRequest - party1(16777273),
party2(16777274), proxies=0, connections=1, current proxies=014:05:40.218 Cisco
CallManager|MediaManager - wait_AuConnectRequest - normal connection14:05:40.234
Cisco CallManager|MediaManager - wait_AuConnectReply14:05:40.234 Cisco CallManager|MediaManager
- wait_AuConnectReply - received 1 responses, forwarding reply for party1(16777273)
and party2(16777274)14:05:40.234 Cisco CallManager|MediaCoordinator -
wait_AuConnectReply14:05:40.234 Cisco CallManager|ConnectionManager -
wait_AuConnectReply(16777273,16777274)14:05:40.234 Cisco CallManager|StationD -
stationOutputStopTone tcpHandle=0x53563d014:05:40.234 Cisco CallManager|StationD -
stationOutputOpenReceiveChannel tcpHandle=0x53563d0 myIP: 3963780a
(10.120.99.57)14:05:40.234 Cisco CallManager|StationD - ConferenceID: 0 msecPacketSize: 20
compressionType: (4)Media_Payload_G711Ulaw64k14:05:40.234 Cisco CallManager|StationD -
stationOutputStopTone tcpHandle=0x56ca08014:05:40.234 Cisco CallManager|StationD -
stationOutputOpenReceiveChannel tcpHandle=0x56ca080 myIP: 3863780a
(10.120.99.56)14:05:40.234 Cisco CallManager|StationD - ConferenceID: 0 msecPacketSize: 20
compressionType: (4)Media_Payload_G711Ulaw64k14:05:40.234 Cisco CallManager|StationD -
stationOutputStopTone tcpHandle=0x56ca08014:05:40.234 Cisco CallManager|StationD -
stationOutputCallState tcpHandle=0x56ca08014:05:40.234 Cisco CallManager|StationD -
stationOutputCallInfo CallingPartyName=Markus (1000), CallingParty=1000,
CalledPartyName=1211, CalledParty=1211, tcpHandle=0x56ca08014:05:40.234 Cisco
CallManager|StationD - stationOutputSelectSoftKeys tcpHandle=0x56ca08014:05:40.234
Cisco CallManager|StationD - stationOutputDisplayPromptStatus
tcpHandle=0x56ca08014:05:40.234 Cisco CallManager|StationD - stationOutputStopTone
tcpHandle=0x53563d014:05:40.234 Cisco CallManager|StationD - stationOutputCallState
tcpHandle=0x53563d014:05:40.234 Cisco CallManager|StationD - stationOutputCallInfo
CallingPartyName=Markus (1000), CallingParty=1000, CalledPartyName=1211,
CalledParty=1211, tcpHandle=0x53563d014:05:40.234 Cisco CallManager|StationD -
stationOutputSelectSoftKeys tcpHandle=0x53563d014:05:40.234 Cisco
CallManager|StationD - stationOutputDisplayPromptStatus
tcpHandle=0x53563d014:05:40.375 Cisco CallManager|StationInit - InboundStim -
StationOpenReceiveChannelAckID tcpHandle=0x56ca080, Status=0, IpAddr=0x3863780a,
Port=18094, PartyID=1214:05:40.375 Cisco CallManager|StationD -
stationOutputStartMediaTransmission tcpHandle=0x53563d0 myIP: 3963780a
(10.120.99.57)14:05:40.375 Cisco CallManager|StationD - RemoteIpAddr: 3863780a (10.120.99.56)
RemoteRtpPortNumber: 18094 msecPacketSize: 20
compressionType: (4)Media_Payload_G711Ulaw64k14:05:40.437 Cisco CallManager|StationInit -
InboundStim - StationOpenReceiveChannelAckID tcpHandle=0x53563d0, Status=0,
IpAddr=0x3963780a, Port=29436, PartyID=1114:05:40.437 Cisco CallManager|MediaManager -
wait_AuConnectInfo14:05:40.437 Cisco CallManager|MediaManager - wait_AuConnectInfo -
recieved response, forwarding14:05:40.437 Cisco CallManager|MediaCoordinator -
wait_AuConnectInfoInd14:05:40.437 Cisco CallManager|StationD -
stationOutputStartMediaTransmission tcpHandle=0x56ca080 myIP: 3863780a

```
(10.120.99.56)14:05:40.437 Cisco CallManager|StationD - RemoteIpAddr: 3963780a (10.120.99.57)
RemoteRtpPortNumber: 29436 msecPacketSize: 20
compressionType: (4)Media_Payload_G711ULaw64k14:05:40.437 Cisco CallManager|Locations:Orig=0 BW=-
1Dest=0 BW=-1          (-1 implies infinite bw available)14:05:40.437 Cisco
CallManager|Locations:Orig=0 BW=-1Dest=0 BW=-1          (-1 implies infinite bw
available)14:05:40.671 Cisco CallManager|CMPProcMon - -----Entered Router
Verification14:05:40.671 Cisco CallManager|CMPProcMon - ----Exited Router
Verification14:05:42.421 Cisco CallManager|StationInit - InboundStim - OnHookMessageID
tcpHandle=0x56ca08014:05:42.421 Cisco CallManager|StationD - stationOutputSetSpeakerMode: 2
tcpHandle=0x56ca08014:05:42.421 Cisco CallManager|StationD - stationOutputClearStatus
tcpHandle=0x56ca08014:05:42.421 Cisco CallManager|StationD - stationOutputCallState
tcpHandle=0x56ca08014:05:42.421 Cisco CallManager|StationD - stationOutputSelectSoftKeys
tcpHandle=0x56ca08014:05:42.421 Cisco CallManager|StationD - stationOutputDisplayPromptStatus
tcpHandle=0x56ca08014:05:42.421 Cisco CallManager|StationD - stationOutputActivateCallPlane
tcpHandle=0x56ca08014:05:42.421 Cisco CallManager|StationD - stationOutputSetLamp
stim: 9=Line instance=4 lampMode=LampOff tcpHandle=0x56ca08014:05:42.421 Cisco
CallManager|StationD - stationOutputStationDefineTimeDate
tcpHandle=0x56ca08014:05:42.421 Cisco CallManager|StationD - stationOutputStopTone
tcpHandle=0x56ca08014:05:42.421 Cisco CallManager|Locations:Orig=0 BW=-1Dest=0 BW=-1
(-1 implies infinite bw available)14:05:42.421 Cisco CallManager|Locations:Orig=0 BW=-1Dest=0
BW=-1          (-1 implies infinite bw available)14:05:42.421 Cisco
CallManager|ConnectionManager -          wait_AuDisconnectRequest(16777274,16777273): STOP
SESSION14:05:42.421 Cisco CallManager|ConnectionManager -          storeMediaInfo(16777274):
EXISTING ENTRY DISCOVERED, tail == 214:05:42.421 Cisco CallManager|ConnectionManager -
storeMediaInfo(16777273): EXISTING ENTRY DISCOVERED, tail == 214:05:42.421 Cisco
CallManager|MediaCoordinator - wait_AuDisconnectRequest14:05:42.421 Cisco
CallManager|MediaCoordinator - wait_AuDisconnectRequest -          sending disconnect to
MediaManager(6)14:05:42.421 Cisco CallManager|MediaManager -
wait_AuDisconnectRequest14:05:42.421 Cisco CallManager|MediaManager - wait_AuDisconnectRequest -
StopSession sending disconnect to (64,6) and remove connection          from list14:05:42.421
Cisco CallManager|StationD - stationOutputCloseReceiveChannel          tcpHandle=0x53563d0
myIP: 3963780a (10.120.99.57)14:05:42.421 Cisco CallManager|StationD -
stationOutputStopMediaTransmission          tcpHandle=0x53563d0 myIP: 3963780a
(10.120.99.57)14:05:42.421 Cisco CallManager|StationD - stationOutputCloseReceiveChannel
tcpHandle=0x56ca080 myIP: 3863780a (10.120.99.56)14:05:42.421 Cisco CallManager|StationD -
stationOutputStopMediaTransmission          tcpHandle=0x56ca080 myIP: 3863780a
(10.120.99.56)14:05:42.421 Cisco CallManager|MediaManager - wait_AuDisconnectReply14:05:42.421
Cisco CallManager|MediaManager - wait_AuDisconnectReply -          received all disconnect
replies, forwarding a reply for          party1(16777274) and party2(16777273)14:05:42.421
Cisco CallManager|MediaCoordinator - wait_AuDisconnectReply14:05:42.421 Cisco
CallManager|MediaCoordinator - wait_AuDisconnectReply -          removing MediaManager(6)
from connection list14:05:42.421 Cisco CallManager|ConnectionManager -
wait_AuDisconnectReply(16777274,16777273): STOP SESSION14:05:42.421 Cisco
CallManager|ConnectionManager -          deleteMediaInfoEntry(16777274): ENTRY DELETED, tail
== 114:05:42.421 Cisco CallManager|ConnectionManager -
deleteMediaInfoEntry(16777273): ENTRY DELETED, tail == 014:05:42.421 Cisco CallManager|StationD
- stationOutputStationDefineTimeDate          tcpHandle=0x53563d014:05:42.421 Cisco
CallManager|StationD - stationOutputSetSpeakerMode: 2
tcpHandle=0x53563d014:05:42.421 Cisco CallManager|StationD - stationOutputClearStatus
tcpHandle=0x53563d014:05:42.421 Cisco CallManager|StationD - stationOutputCallState
tcpHandle=0x53563d014:05:42.421 Cisco CallManager|StationD - stationOutputSelectSoftKeys
tcpHandle=0x53563d014:05:42.421 Cisco CallManager|StationD - stationOutputDisplayPromptStatus
tcpHandle=0x53563d014:05:42.421 Cisco CallManager|StationD - stationOutputActivateCallPlane
tcpHandle=0x53563d014:05:42.421 Cisco CallManager|StationD - stationOutputSetLamp
stim: 9=Line instance=1 lampMode=LampOff tcpHandle=0x53563d014:05:42.421 Cisco
CallManager|StationD - stationOutputStationDefineTimeDate
tcpHandle=0x53563d014:05:42.421 Cisco CallManager|StationD - stationOutputStopTone
tcpHandle=0x53563d0
```

呼叫 1311 (短)

```
!--- Each timestamped line of output appears on one line.14:39:04.296 Cisco
CallManager|StationInit - InboundStim - OffHookMessageID
tcpHandle=0x53563d014:39:04.296 Cisco CallManager|StationD - StimLine: OnHook ---
```

OnHook14:39:04.296 Cisco CallManager|StationD - stationOutputSetSpeakerMode: 1
tcpHandle=0x53563d014:39:04.296 Cisco CallManager|StationD - stationOutputDisplayText
tcpHandle=0x53563d0, Display=100014:39:04.296 Cisco CallManager|StationD -
stationOutputDisplayText tcpHandle=0x53563d0, Display=100014:39:04.296 Cisco
CallManager|StationD - stationOutputSetLamp stim: 9=Line instance=1 lampMode=LampOn
tcpHandle=0x53563d014:39:04.296 Cisco CallManager|StationD - stationOutputCallState
tcpHandle=0x53563d014:39:04.296 Cisco CallManager|StationD - stationOutputDisplayPromptStatus
tcpHandle=0x53563d014:39:04.296 Cisco CallManager|StationD - stationOutputSelectSoftKeys
tcpHandle=0x53563d014:39:04.296 Cisco CallManager|StationD - stationOutputActivateCallPlane
tcpHandle=0x53563d014:39:04.296 Cisco CallManager|StationD - stationOutputStartTone:
33=InsideDialTone tcpHandle=0x53563d014:39:05.109 Cisco CallManager|StationInit - InboundStim -
KeypadButtonMessageID kpButton: 1 tcpHandle=0x53563d014:39:05.109 Cisco CallManager|StationD -
stationOutputStopTone tcpHandle=0x53563d014:39:05.109 Cisco CallManager|StationD -
stationOutputSelectSoftKeys tcpHandle=0x53563d014:39:05.656 Cisco
CallManager|StationInit - InboundStim - KeypadButtonMessageID kpButton: 3
tcpHandle=0x53563d014:39:06.125 Cisco CallManager|StationInit - InboundStim -
KeypadButtonMessageID kpButton: 1 tcpHandle=0x53563d014:39:06.453 Cisco CallManager|StationInit
- InboundStim - KeypadButtonMessageID kpButton: 1 tcpHandle=0x53563d014:39:09.453
Cisco CallManager|Locations:Orig=0 BW=-1Dest=0 BW=-1 (-1 implies infinite bw
available)14:39:09.453 Cisco CallManager|StationD - stationOutputCallState
tcpHandle=0x56ca08014:39:09.453 Cisco CallManager|StationD - stationOutputCallInfo
CallingPartyName=Markus (1000), CallingParty=1000, CalledPartyName=13[0-4]X,
CalledParty=1311, tcpHandle=0x56ca08014:39:09.453 Cisco CallManager|StationD -
stationOutputSetLamp stim: 9=Line instance=2 lampMode=LampBlink
tcpHandle=0x56ca08014:39:09.453 Cisco CallManager|StationD - stationOutputSetRinger:
2=InsideRing tcpHandle=0x56ca08014:39:09.453 Cisco CallManager|StationD -
stationOutputDisplayNotify tcpHandle=0x56ca08014:39:09.453 Cisco
CallManager|StationD - stationOutputDisplayPromptStatus
tcpHandle=0x56ca08014:39:09.453 Cisco CallManager|StationD - stationOutputSelectSoftKeys
tcpHandle=0x56ca08014:39:09.453 Cisco CallManager|StationD - stationOutputCallState
tcpHandle=0x53563d014:39:09.453 Cisco CallManager|StationD - stationOutputCallInfo
CallingPartyName=Markus (1000), CallingParty=1000, CalledPartyName=,
CalledParty=1311, tcpHandle=0x53563d014:39:09.453 Cisco CallManager|StationD -
stationOutputCallInfo CallingPartyName=Markus (1000), CallingParty=1000,
CalledPartyName=13[0-4]X, CalledParty=1311, tcpHandle=0x53563d014:39:09.453 Cisco
CallManager|StationD - stationOutputStartTone: 36=AlertingTone
tcpHandle=0x53563d014:39:09.453 Cisco CallManager|StationD - stationOutputCallState
tcpHandle=0x53563d014:39:09.453 Cisco CallManager|StationD - stationOutputSelectSoftKeys
tcpHandle=0x53563d014:39:09.453 Cisco CallManager|StationD - stationOutputDisplayPromptStatus
tcpHandle=0x53563d014:39:11.656 Cisco CallManager|StationInit - InboundStim - OffHookMessageID
tcpHandle=0x56ca08014:39:11.656 Cisco CallManager|StationD - stationOutputClearNotify
tcpHandle=0x56ca08014:39:11.656 Cisco CallManager|StationD - stationOutputSetRinger:
1=RingOff tcpHandle=0x56ca08014:39:11.656 Cisco CallManager|StationD - stationOutputSetLamp
stim: 9=Line instance=2 lampMode=LampOn tcpHandle=0x56ca08014:39:11.656 Cisco
CallManager|StationD - stationOutputCallState tcpHandle=0x56ca08014:39:11.656 Cisco
CallManager|StationD - stationOutputActivateCallPlane
tcpHandle=0x56ca08014:39:11.671 Cisco CallManager|StationD - stationOutputStopTone
tcpHandle=0x53563d014:39:11.671 Cisco CallManager|StationD - stationOutputOpenReceiveChannel
tcpHandle=0x53563d0 myIP: 3963780a (10.120.99.57)14:39:11.671 Cisco CallManager|StationD -
ConferenceID: 0 msecPacketSize: 20
compressionType: (4)Media_Payload_G711Ulaw64k14:39:11.671 Cisco CallManager|StationD -
stationOutputStopTone tcpHandle=0x56ca08014:39:11.671 Cisco CallManager|StationD -
stationOutputOpenReceiveChannel tcpHandle=0x56ca080 myIP: 3863780a
(10.120.99.56)14:39:11.671 Cisco CallManager|StationD - ConferenceID: 0 msecPacketSize: 20
compressionType: (4)Media_Payload_G711Ulaw64k14:39:11.671 Cisco CallManager|StationD -
stationOutputStopTone tcpHandle=0x56ca08014:39:11.671 Cisco CallManager|StationD -
stationOutputCallState tcpHandle=0x56ca08014:39:11.671 Cisco CallManager|StationD -
stationOutputCallInfo CallingPartyName=Markus (1000), CallingParty=1000,
CalledPartyName=13[0-4]X, CalledParty=1311, tcpHandle=0x56ca08014:39:11.671 Cisco
CallManager|StationD - stationOutputSelectSoftKeys tcpHandle=0x56ca08014:39:11.671
Cisco CallManager|StationD - stationOutputDisplayPromptStatus
tcpHandle=0x56ca08014:39:11.671 Cisco CallManager|StationD - stationOutputStopTone
tcpHandle=0x53563d014:39:11.671 Cisco CallManager|StationD - stationOutputCallState
tcpHandle=0x53563d014:39:11.671 Cisco CallManager|StationD - stationOutputCallInfo


```
CallingPartyName=Markus (1000), CallingParty=1000, CalledPartyName=13[0-4]X,
CalledParty=1311, tcpHandle=0x53563d014:39:11.671 Cisco CallManager|StationD -
stationOutputSelectSoftKeys tcpHandle=0x53563d014:39:11.671 Cisco
CallManager|StationD - stationOutputDisplayPromptStatus
tcpHandle=0x53563d014:39:11.859 Cisco CallManager|StationInit - InboundStim -
StationOpenReceiveChannelAckID tcpHandle=0x53563d0, Status=0, IpAddr=0x3963780a,
Port=17594, PartyID=1514:39:11.859 Cisco CallManager|StationD -
stationOutputStartMediaTransmission tcpHandle=0x56ca080 myIP: 3863780a
(10.120.99.56)14:39:11.859 Cisco CallManager|StationD - RemoteIpAddr: 3963780a (10.120.99.57)
RemoteRtpPortNumber: 17594 msecPacketSize: 20
compressionType: (4)Media_Payload_G711Ulaw64k14:39:11.859 Cisco CallManager|StationInit -
InboundStim - StationOpenReceiveChannelAckID tcpHandle=0x56ca080, Status=0,
IpAddr=0x3863780a, Port=18540, PartyID=1614:39:11.859 Cisco CallManager|StationD -
stationOutputStartMediaTransmission tcpHandle=0x53563d0 myIP: 3963780a
(10.120.99.57)14:39:11.859 Cisco CallManager|StationD - RemoteIpAddr: 3863780a (10.120.99.56)
RemoteRtpPortNumber: 18540 msecPacketSize: 20
compressionType: (4)Media_Payload_G711Ulaw64k14:39:11.859 Cisco CallManager|Locations:Orig=0 BW=-
1Dest=0 BW=-1 (-1 implies infinite bw available)14:39:11.859 Cisco
CallManager|Locations:Orig=0 BW=-1Dest=0 BW=-1 (-1 implies infinite bw
available)14:39:14.203 Cisco CallManager|StationInit - InboundStim - OnHookMessageID
tcpHandle=0x56ca08014:39:14.203 Cisco CallManager|StationD - stationOutputSetSpeakerMode: 2
tcpHandle=0x56ca08014:39:14.203 Cisco CallManager|StationD - stationOutputClearStatus
tcpHandle=0x56ca08014:39:14.203 Cisco CallManager|StationD - stationOutputCallState
tcpHandle=0x56ca08014:39:14.203 Cisco CallManager|StationD - stationOutputSelectSoftKeys
tcpHandle=0x56ca08014:39:14.203 Cisco CallManager|StationD - stationOutputDisplayPromptStatus
tcpHandle=0x56ca08014:39:14.203 Cisco CallManager|StationD - stationOutputActivateCallPlane
tcpHandle=0x56ca08014:39:14.203 Cisco CallManager|StationD - stationOutputSetLamp
stim: 9=Line instance=2 lampMode=LampOff tcpHandle=0x56ca08014:39:14.203 Cisco
CallManager|StationD - stationOutputStationDefineTimeDate
tcpHandle=0x56ca08014:39:14.203 Cisco CallManager|StationD - stationOutputStopTone
tcpHandle=0x56ca08014:39:14.203 Cisco CallManager|Locations:Orig=0 BW=-1Dest=0 BW=-1
(-1 implies infinite bw available)14:39:14.203 Cisco CallManager|Locations:Orig=0 BW=-1Dest=0
BW=-1 (-1 implies infinite bw available)14:39:14.203 Cisco CallManager|StationD -
stationOutputCloseReceiveChannel tcpHandle=0x53563d0 myIP: 3963780a
(10.120.99.57)14:39:14.203 Cisco CallManager|StationD - stationOutputStopMediaTransmission
tcpHandle=0x53563d0 myIP: 3963780a (10.120.99.57)14:39:14.203 Cisco CallManager|StationD -
stationOutputCloseReceiveChannel tcpHandle=0x56ca080 myIP: 3863780a
(10.120.99.56)14:39:14.203 Cisco CallManager|StationD - stationOutputStopMediaTransmission
tcpHandle=0x56ca080 myIP: 3863780a (10.120.99.56)14:39:14.203 Cisco CallManager|StationD -
stationOutputStationDefineTimeDate tcpHandle=0x53563d014:39:14.203 Cisco
CallManager|StationD - stationOutputSetSpeakerMode: 2
tcpHandle=0x53563d014:39:14.203 Cisco CallManager|StationD - stationOutputClearStatus
tcpHandle=0x53563d014:39:14.203 Cisco CallManager|StationD - stationOutputCallState
tcpHandle=0x53563d014:39:14.203 Cisco CallManager|StationD - stationOutputSelectSoftKeys
tcpHandle=0x53563d014:39:14.203 Cisco CallManager|StationD - stationOutputDisplayPromptStatus
tcpHandle=0x53563d014:39:14.203 Cisco CallManager|StationD - stationOutputActivateCallPlane
tcpHandle=0x53563d014:39:14.203 Cisco CallManager|StationD - stationOutputSetLamp
stim: 9=Line instance=1 lampMode=LampOff tcpHandle=0x53563d014:39:14.203 Cisco
CallManager|StationD - stationOutputStationDefineTimeDate
tcpHandle=0x53563d014:39:14.203 Cisco CallManager|StationD - stationOutputStopTone
tcpHandle=0x53563d014:39:15.359 Cisco CallManager|StationInit - InboundStim - KeepAliveMessage -
Send KeepAlive to Device Controller. DeviceName=SEP003094C2635E,
TCPHandle=0x53563d0, Socket=0x528, IPAddr=10.120.99.57, Port=50491, Device
Controller=[1,85,4]14:39:15.359 Cisco CallManager|StationD - stationOutputKeepAliveAck
tcpHandle=0x53563d0
```

呼叫 1311 (完整)

```
!--- Each timestamped line of output appears on one line.14:35:26.015 Cisco CallManager|StationD
- stationOutputSetLamp stim: 9=Line instance=1 lampMode=LampOff
tcpHandle=0x53563d014:35:26.015 Cisco CallManager|StationD - stationOutputStationDefineTimeDate
tcpHandle=0x53563d014:35:26.015 Cisco CallManager|StationD - stationOutputStopTone
tcpHandle=0x53563d014:35:26.093 Cisco CallManager|CMPProcMon - -----Entered Router
Verification14:35:26.093 Cisco CallManager|CMPProcMon - ----Exited Router
```


Verification14:35:26.500 Cisco CallManager|StationInit - InboundStim - OffHookMessageID
tcpHandle=0x53563d014:35:26.500 Cisco CallManager|StationD - stationOutputDisplayText
tcpHandle=0x53563d0, Display= 1000 14:35:26.500 Cisco
CallManager|StationD - stationOutputSetLamp stim: 9=Line instance=1 lampMode=LampOn
tcpHandle=0x53563d014:35:26.500 Cisco CallManager|StationD - stationOutputCallState
tcpHandle=0x53563d014:35:26.500 Cisco CallManager|StationD - stationOutputDisplayPromptStatus
tcpHandle=0x53563d014:35:26.500 Cisco CallManager|StationD - stationOutputSelectSoftKeys
tcpHandle=0x53563d014:35:26.500 Cisco CallManager|StationD - stationOutputActivateCallPlane
tcpHandle=0x53563d014:35:26.500 Cisco CallManager|Digit analysis: match(fqcn="",
cn="1000", pss="", dd="")14:35:26.500 Cisco CallManager|Digit analysis: analysis
results14:35:26.500 Cisco CallManager| |PretransformCallingPartyNumber=1000
|CallingPartyNumber=1000 |DialingPartition= |DialingPattern=
|DialingRoutePatternRegularExpression= |DialingWhere=
|PatternType=Unknown |PotentialMatches=PotentialMatchesExist
|DialingSdlProcessId=(0,0,0) |PretransformDigitString=
|PretransformTagsList= |PretransformPositionalMatchList=
|CollectedDigits= |TagsList= |PositionalMatchList=
|RouteBlockFlag=BlockThisPattern |InterceptPartition= |InterceptPattern=
|InterceptWhere= |InterceptSdlProcessId=(1,82,1)
|InterceptSsType=16777221 |InterceptSsKey=786414:35:26.500 Cisco
CallManager|StationD - stationOutputStartTone: 33=InsideDialTone
tcpHandle=0x53563d014:35:27.578 Cisco CallManager|StationInit - InboundStim -
KeypadButtonMessageID kpButton: 1 tcpHandle=0x53563d014:35:27.578 Cisco CallManager|StationD -
stationOutputStopTone tcpHandle=0x53563d014:35:27.578 Cisco CallManager|StationD -
stationOutputSelectSoftKeys tcpHandle=0x53563d014:35:27.578 Cisco CallManager|Digit
analysis: match(fqcn="", cn="1000", pss="", dd="1")14:35:27.578 Cisco
CallManager|Digit analysis: potentialMatches=PotentialMatchesExist14:35:27.890 Cisco
CallManager|StationInit - InboundStim - KeypadButtonMessageID kpButton: 3
tcpHandle=0x53563d014:35:27.890 Cisco CallManager|Digit analysis: match(fqcn="",
cn="1000", pss="", dd="13")14:35:27.890 Cisco CallManager|Digit analysis:
potentialMatches=PotentialMatchesExist14:35:28.093 Cisco CallManager|CMPProcMon - -----Entered
Router Verification14:35:28.093 Cisco CallManager|CMPProcMon - ----Exited Router
Verification14:35:28.406 Cisco CallManager|StationInit - InboundStim -
KeypadButtonMessageID kpButton: 1 tcpHandle=0x53563d014:35:28.406 Cisco CallManager|Digit
analysis: match(fqcn="", cn="1000", pss="", dd="131")14:35:28.406 Cisco
CallManager|Digit analysis: analysis results14:35:28.421 Cisco CallManager|
|PretransformCallingPartyNumber=1000 |CallingPartyNumber=1000
|DialingPartition= |DialingPattern=131
|DialingRoutePatternRegularExpression=(131) |DialingWhere=
|PatternType=Enterprise |PotentialMatches=PotentialMatchesExist
|DialingSdlProcessId=(1,38,22) |PretransformDigitString=131
|PretransformTagsList=SUBSCRIBER |PretransformPositionalMatchList=131
|CollectedDigits=131 |TagsList=SUBSCRIBER |PositionalMatchList=131
|RouteBlockFlag=RouteThisPattern |InterceptPartition= |InterceptPattern=
|InterceptWhere= |InterceptSdlProcessId=(0,0,0) |InterceptSsType=0
|InterceptSsKey=014:35:28.718 Cisco CallManager|StationInit - New connection accepted.
DeviceName=, TCPHandle=0x56d5278, Socket=0x64c, IPAddr=10.120.99.52, Port=49539,
Device Controller=[0,0,0]14:35:28.718 Cisco CallManager|StationInit - Processing StationReg.
regCount: 1 DeviceName=MTP00D097386420, TCPHandle=0x56d5278, Socket=0x64c,
IPAddr=10.120.99.52, Port=49539, Device Controller=[1,45,751]14:35:28.718 Cisco
CallManager|StationInit - InboundStim - IpPortMessageID: 0(0x0)
tcpHandle=0x56d527814:35:28.828 Cisco CallManager|NodeId: 1, EventId: 1506 EventClass: 6
EventInfo: Device not started since a database error occurred when port 0.0 tried to
retrieve its device settings14:35:28.828 Cisco CallManager|StationInit -
StationCloseReq received: 0x56d527814:35:28.828 Cisco CallManager|NodeId: 1, EventId: 1698
EventClass: 4 EventInfo: Station Connection Error. Device
Name=<MTP00D097386420>14:35:28.828 Cisco CallManager|***** StationInit - Socket Broken.
DeviceName=, TCPHandle=0x56d5278, Socket=0x64c, IPAddr=10.120.99.52, Port=0xc183,
Device Controller=[0,0,0]14:35:28.828 Cisco CallManager|StationInit - Closing Station connection
DeviceName=MTP00D097386420, TCPHandle=0x56d5278, Socket=0x64c, IPAddr=10.120.99.52,
Port=49539, Device Controller=[1,45,751]14:35:28.828 Cisco CallManager|StationInit -
StationCloseReq received: 0x56d527814:35:28.828 Cisco CallManager|NodeId: 1, EventId: 1513
EventClass: 6 EventInfo: Device Initialization Failed, Device
Name=<MTP00D097386420>, Protocol= 14:35:28.937 Cisco CallManager|StationInit - InboundStim -

KeypadButtonMessageID kpButton: 1 tcpHandle=0x53563d014:35:28.937 Cisco CallManager|Digit analysis: match(fqcn="", cn="1000", pss="", dd="1311")14:35:28.937 Cisco CallManager|Digit analysis: analysis results14:35:28.937 Cisco CallManager|PretransformCallingPartyNumber=1000 |CallingPartyNumber=1000 |DialingPartition= |DialingPattern=13[0-4]X |DialingRoutePatternRegularExpression=(13[0-4]X) |DialingWhere= |PatternType=Enterprise |PotentialMatches=PotentialMatchesExist |DialingSdlProcessId=(1,38,21) |PretransformDigitString=1311 |PretransformTagsList=SUBSCRIBER |PretransformPositionalMatchList=1311 |CollectedDigits=1311 |TagsList=SUBSCRIBER |PositionalMatchList=1311 |RouteBlockFlag=RouteThisPattern |InterceptPartition= |InterceptPattern= |InterceptWhere= |InterceptSdlProcessId=(0,0,0) |InterceptSsType=0 |InterceptSsKey=014:35:30.093 Cisco CallManager|CMProcMon - -----Entered Router Verification14:35:30.093 Cisco CallManager|CMProcMon - ----Exited Router Verification14:35:31.937 Cisco CallManager|Locations:Orig=0 BW=-1Dest=0 BW=-1 (-1 implies infinite bw available)14:35:31.937 Cisco CallManager|StationD - stationOutputCallState tcpHandle=0x56ca08014:35:31.937 Cisco CallManager|StationD - stationOutputCallInfo CallingPartyName=Markus (1000), CallingParty=1000, CalledPartyName=13[0-4]X, CalledParty=1311, tcpHandle=0x56ca08014:35:31.937 Cisco CallManager|StationD - stationOutputSetLamp stim: 9=Line instance=2 lampMode=LampBlink tcpHandle=0x56ca08014:35:31.937 Cisco CallManager|StationD - stationOutputSetRinger: 2=InsideRing tcpHandle=0x56ca08014:35:31.937 Cisco CallManager|StationD - stationOutputDisplayNotify tcpHandle=0x56ca08014:35:31.937 Cisco CallManager|StationD - stationOutputDisplayPromptStatus tcpHandle=0x56ca08014:35:31.937 Cisco CallManager|StationD - stationOutputSelectSoftKeys tcpHandle=0x56ca08014:35:31.937 Cisco CallManager|StationD - stationOutputCallState tcpHandle=0x53563d014:35:31.937 Cisco CallManager|StationD - stationOutputCallInfo CallingPartyName=Markus (1000), CallingParty=1000, CalledPartyName=, CalledParty=1311, tcpHandle=0x53563d014:35:31.937 Cisco CallManager|StationD - stationOutputCallInfo CallingPartyName=Markus (1000), CallingParty=1000, CalledPartyName=13[0-4]X, CalledParty=1311, tcpHandle=0x53563d014:35:31.937 Cisco CallManager|StationD - stationOutputStartTone: 36=AlertingTone tcpHandle=0x53563d014:35:31.937 Cisco CallManager|StationD - stationOutputCallState tcpHandle=0x53563d014:35:31.937 Cisco CallManager|StationD - stationOutputSelectSoftKeys tcpHandle=0x53563d014:35:31.937 Cisco CallManager|StationD - stationOutputDisplayPromptStatus tcpHandle=0x53563d014:35:32.093 Cisco CallManager|CMProcMon - -----Entered Router Verification14:35:32.093 Cisco CallManager|CMProcMon - ----Exited Router Verification14:35:33.421 Cisco CallManager|StationInit - InboundStim - OffHookMessageID tcpHandle=0x56ca08014:35:33.421 Cisco CallManager|StationD - stationOutputClearNotify tcpHandle=0x56ca08014:35:33.421 Cisco CallManager|StationD - stationOutputSetRinger: 1=RingOff tcpHandle=0x56ca08014:35:33.421 Cisco CallManager|StationD - stationOutputSetLamp stim: 9=Line instance=2 lampMode=LampOn tcpHandle=0x56ca08014:35:33.421 Cisco CallManager|StationD - stationOutputCallState tcpHandle=0x56ca08014:35:33.421 Cisco CallManager|StationD - stationOutputActivateCallPlane tcpHandle=0x56ca08014:35:33.421 Cisco CallManager|ConnectionManager - wait_AuConnectRequest(16777277,16777278): INFORM MEDIA LAYER14:35:33.421 Cisco CallManager|ConnectionManager - storeMediaInfo(16777277): ADD NEW ENTRY, tail == 114:35:33.421 Cisco CallManager|ConnectionManager - storeMediaInfo(16777278): ADD NEW ENTRY, tail == 214:35:33.421 Cisco CallManager|MediaCoordinator - wait_AuConnectRequest()14:35:33.421 Cisco CallManager|MediaCoordinator - wait_AuConnectRequest - starting MediaManager w/ existing (0) connections14:35:33.421 Cisco CallManager|MediaCoordinator - wait_AuConnectRequest - new MediaManager(44,7) started14:35:33.421 Cisco CallManager|MediaManager(7) started14:35:33.421 Cisco CallManager|MediaManager - wait_AuConnectRequest14:35:33.421 Cisco CallManager|MediaManager - wait_AuConnectRequest - party1(16777277), party2(16777278), proxies=0, connections=1, current proxies=014:35:33.421 Cisco CallManager|MediaManager - wait_AuConnectRequest - normal connection14:35:33.421 Cisco CallManager|MediaManager - wait_AuConnectReply14:35:33.421 Cisco CallManager|MediaManager - wait_AuConnectReply - received 1 responses, forwarding reply for party1(16777277) and party2(16777278)14:35:33.421 Cisco CallManager|MediaCoordinator - wait_AuConnectReply14:35:33.421 Cisco CallManager|ConnectionManager - wait_AuConnectReply(16777277,16777278)14:35:33.421 Cisco CallManager|StationD - stationOutputStopTone tcpHandle=0x53563d014:35:33.437 Cisco CallManager|StationD - stationOutputOpenReceiveChannel tcpHandle=0x53563d0 myIP: 3963780a (10.120.99.57)14:35:33.437 Cisco CallManager|StationD - ConferenceID: 0

msecPacketSize: 20 compressionType:(4)Media_Payload_G711Ulaw64k14:35:33.437 Cisco
CallManager|StationD - stationOutputStopTone tcpHandle=0x56ca08014:35:33.437 Cisco
CallManager|StationD - stationOutputOpenReceiveChannel tcpHandle=0x56ca080 myIP:
3863780a (10.120.99.56)14:35:33.437 Cisco CallManager|StationD - ConferenceID: 0 msecPacketSize:
20 compressionType:(4)Media_Payload_G711Ulaw64k14:35:33.437 Cisco
CallManager|StationD - stationOutputStopTone tcpHandle=0x56ca08014:35:33.437 Cisco
CallManager|StationD - stationOutputCallState tcpHandle=0x56ca08014:35:33.437 Cisco
CallManager|StationD - stationOutputCallInfo CallingPartyName=Markus (1000),
CallingParty=1000, CalledPartyName=13[0-4]X, CalledParty=1311,
tcpHandle=0x56ca08014:35:33.437 Cisco CallManager|StationD - stationOutputSelectSoftKeys
tcpHandle=0x56ca08014:35:33.437 Cisco CallManager|StationD - stationOutputDisplayPromptStatus
tcpHandle=0x56ca08014:35:33.437 Cisco CallManager|StationD - stationOutputStopTone
tcpHandle=0x53563d014:35:33.437 Cisco CallManager|StationD - stationOutputCallState
tcpHandle=0x53563d014:35:33.437 Cisco CallManager|StationD - stationOutputCallInfo
CallingPartyName=Markus (1000), CallingParty=1000, CalledPartyName=13[0-4]X,
CalledParty=1311, tcpHandle=0x53563d014:35:33.437 Cisco CallManager|StationD -
stationOutputSelectSoftKeys tcpHandle=0x53563d014:35:33.437 Cisco
CallManager|StationD - stationOutputDisplayPromptStatus
tcpHandle=0x53563d014:35:33.546 Cisco CallManager|StationInit - InboundStim -
StationOpenReceiveChannelAckID tcpHandle=0x56ca080, Status=0, IpAddr=0x3863780a,
Port=17190, PartyID=1414:35:33.546 Cisco CallManager|StationD -
stationOutputStartMediaTransmission tcpHandle=0x53563d0 myIP: 3963780a
(10.120.99.57)14:35:33.546 Cisco CallManager|StationD - RemoteIpAddr: 3863780a (10.120.99.56)
RemoteRtpPortNumber: 17190 msecPacketSize: 20
compressionType:(4)Media_Payload_G711Ulaw64k14:35:33.562 Cisco CallManager|StationInit -
InboundStim - StationOpenReceiveChannelAckID tcpHandle=0x53563d0, Status=0,
IpAddr=0x3963780a, Port=28532, PartyID=1314:35:33.562 Cisco CallManager|MediaManager -
wait_AuConnectInfo14:35:33.562 Cisco CallManager|MediaManager - wait_AuConnectInfo -
recieved response, fowarding14:35:33.562 Cisco CallManager|MediaCoordinator -
wait_AuConnectInfoInd14:35:33.562 Cisco CallManager|StationD -
stationOutputStartMediaTransmission tcpHandle=0x56ca080 myIP: 3863780a
(10.120.99.56)14:35:33.562 Cisco CallManager|StationD - RemoteIpAddr: 3963780a (10.120.99.57)
RemoteRtpPortNumber: 28532 msecPacketSize: 20
compressionType:(4)Media_Payload_G711Ulaw64k14:35:33.562 Cisco CallManager|Locations:Orig=0 BW=-
1Dest=0 BW=-1 (-1 implies infinite bw available)14:35:33.562 Cisco
CallManager|Locations:Orig=0 BW=-1Dest=0 BW=-1 (-1 implies infinite bw
available)14:35:34.093 Cisco CallManager|CMPProcMon - -----Entered Router
Verification14:35:34.093 Cisco CallManager|CMPProcMon - ----Exited Router
Verification14:35:36.093 Cisco CallManager|CMPProcMon - -----Entered Router
Verification14:35:36.093 Cisco CallManager|CMPProcMon - ----Exited Router
Verification14:35:36.093 Cisco CallManager|StationInit - InboundStim - OnHookMessageID
tcpHandle=0x56ca08014:35:36.093 Cisco CallManager|StationD - stationOutputSetSpeakerMode: 2
tcpHandle=0x56ca08014:35:36.093 Cisco CallManager|StationD - stationOutputClearStatus
tcpHandle=0x56ca08014:35:36.093 Cisco CallManager|StationD - stationOutputCallState
tcpHandle=0x56ca08014:35:36.093 Cisco CallManager|StationD - stationOutputSelectSoftKeys
tcpHandle=0x56ca08014:35:36.093 Cisco CallManager|StationD - stationOutputDisplayPromptStatus
tcpHandle=0x56ca08014:35:36.093 Cisco CallManager|StationD - stationOutputActivateCallPlane
tcpHandle=0x56ca08014:35:36.093 Cisco CallManager|StationD - stationOutputSetLamp
stim: 9=Line instance=2 lampMode=LampOff tcpHandle=0x56ca08014:35:36.093 Cisco
CallManager|StationD - stationOutputStationDefineTimeDate
tcpHandle=0x56ca08014:35:36.093 Cisco CallManager|StationD - stationOutputStopTone
tcpHandle=0x56ca08014:35:36.093 Cisco CallManager|Locations:Orig=0 BW=-1Dest=0 BW=-1
(-1 implies infinite bw available)14:35:36.093 Cisco CallManager|Locations:Orig=0 BW=-1Dest=0
BW=-1 (-1 implies infinite bw available)14:35:36.093 Cisco
CallManager|ConnectionManager - wait_AuDisconnectRequest(16777278,16777277): STOP
SESSION14:35:36.093 Cisco CallManager|ConnectionManager - storeMediaInfo(16777278):
EXISTING ENTRY DISCOVERED, tail == 214:35:36.093 Cisco CallManager|ConnectionManager -
storeMediaInfo(16777277): EXISTING ENTRY DISCOVERED, tail == 214:35:36.093 Cisco
CallManager|MediaCoordinator - wait_AuDisconnectRequest14:35:36.093 Cisco
CallManager|MediaCoordinator - wait_AuDisconnectRequest - sending disconnect to
MediaManager(7)14:35:36.093 Cisco CallManager|MediaManager -
wait_AuDisconnectRequest14:35:36.093 Cisco CallManager|MediaManager - wait_AuDisconnectRequest -
StopSession sending disconnect to (64,7) and remove connection from list14:35:36.093
Cisco CallManager|StationD - stationOutputCloseReceiveChannel tcpHandle=0x53563d0

```
myIP: 3963780a (10.120.99.57)14:35:36.093 Cisco CallManager|StationD -
stationOutputStopMediaTransmission          tcpHandle=0x53563d0 myIP: 3963780a
(10.120.99.57)14:35:36.093 Cisco CallManager|StationD - stationOutputCloseReceiveChannel
tcpHandle=0x56ca080 myIP: 3863780a (10.120.99.56)14:35:36.093 Cisco CallManager|StationD -
stationOutputStopMediaTransmission          tcpHandle=0x56ca080 myIP: 3863780a
(10.120.99.56)14:35:36.093 Cisco CallManager|MediaManager - wait_AuDisconnectReply14:35:36.109
Cisco CallManager|MediaManager - wait_AuDisconnectReply - received all disconnect
replies, forwarding a reply for party1(16777278) and party2(16777277)14:35:36.109
Cisco CallManager|MediaCoordinator - wait_AuDisconnectReply14:35:36.109 Cisco
CallManager|MediaCoordinator - wait_AuDisconnectReply - removing MediaManager(7)
from connection list14:35:36.109 Cisco CallManager|ConnectionManager -
wait_AuDisconnectReply(16777278,16777277): STOP SESSION14:35:36.109 Cisco
CallManager|ConnectionManager - deleteMediaInfoEntry(16777278): ENTRY DELETED, tail
== 114:35:36.109 Cisco CallManager|ConnectionManager -
deleteMediaInfoEntry(16777277): ENTRY DELETED, tail == 014:35:36.109 Cisco CallManager|StationD
- stationOutputStationDefineTimeDate tcpHandle=0x53563d014:35:36.109 Cisco
CallManager|StationD - stationOutputSetSpeakerMode: 2
tcpHandle=0x53563d014:35:36.109 Cisco CallManager|StationD - stationOutputClearStatus
tcpHandle=0x53563d014:35:36.109 Cisco CallManager|StationD - stationOutputCallState
tcpHandle=0x53563d014:35:36.109 Cisco CallManager|StationD - stationOutputSelectSoftKeys
tcpHandle=0x53563d014:35:36.109 Cisco CallManager|StationD - stationOutputDisplayPromptStatus
tcpHandle=0x53563d014:35:36.109 Cisco CallManager|StationD - stationOutputActivateCallPlane
tcpHandle=0x53563d014:35:36.109 Cisco CallManager|StationD - stationOutputSetLamp
stim: 9=Line instance=1 lampMode=LampOff tcpHandle=0x53563d014:35:36.109 Cisco
CallManager|StationD - stationOutputStationDefineTimeDate
tcpHandle=0x53563d014:35:36.109 Cisco CallManager|StationD - stationOutputStopTone
tcpHandle=0x53563d0
```

[相关信息](#)

- [语音技术支持](#)
- [语音和统一通信产品支持](#)
- [Cisco IP 电话故障排除](#) 
- [技术支持和文档 - Cisco Systems](#)