

目录

[简介](#)

[开始使用前](#)

[规则](#)

[先决条件](#)

[使用的组件](#)

[配置](#)

[网络图](#)

[配置](#)

[RADIUS 配置文件](#)

[验证](#)

[故障排除](#)

[单一登录 SSD 2.5.1 的特性是什么？](#)

[配置 SSG 和 SSD 之前，需要了解什么？](#)

[在启动 PPPoA 会话之后和设置 SSD 登录之前应做什么？](#)

[如何测试 SSD 单一登录功能？](#)

[如何运行 SSD 调试？](#)

[调试输出示例](#)

[NRP1 输出](#)

[\(LAC\) L2TP 接入集中器输出](#)

[LNS 输出](#)

[相关信息](#)

简介

在本文描述的配置示例显示访问互联网服务提供商网络使用在异步传输模式的点对点协议的远程客户端(PPPoA)。

使用第3层服务选择网关/服务选择公告(SSG/SSD)，远程客户端要访问一第2层隧道协议服务。L2TP服务在配置里代表用15.15.15.5的主机IP地址。使用动态主机配置协议(DHCP)，Cisco 677提供一个IP地址给从10.0.0.2的IP地址池的PC给10.0.0.254，以255.255.255.0掩码。并且，端口地址转换(PAT)在Cisco 677启用。

有此配置示例的三测验：

- 在服务的不同的步骤的期间与SS相关的调试由远程客户端登录。
- 单个登录SSD 2.5.1功能。
- 启用SSD调试。

开始使用前

规则

有关文档规则的详细信息，请参阅 [Cisco 技术提示规则](#)。

先决条件

本文档没有任何特定的前提条件。

使用的组件

本文档中的信息基于以下软件和硬件版本。

- Cisco C6400R软件(C6400R-G4P5-M)，版本12.1(5)DC1
- Cisco7200软件(C7200-IS-M)，版本12.2(1)

本文档中的信息都是基于特定实验室环境中的设备创建的。本文档中使用的所有设备最初均采用原始（默认）配置。如果您是在真实网络上操作，请确保您在使用任何命令前已经了解其潜在影响。

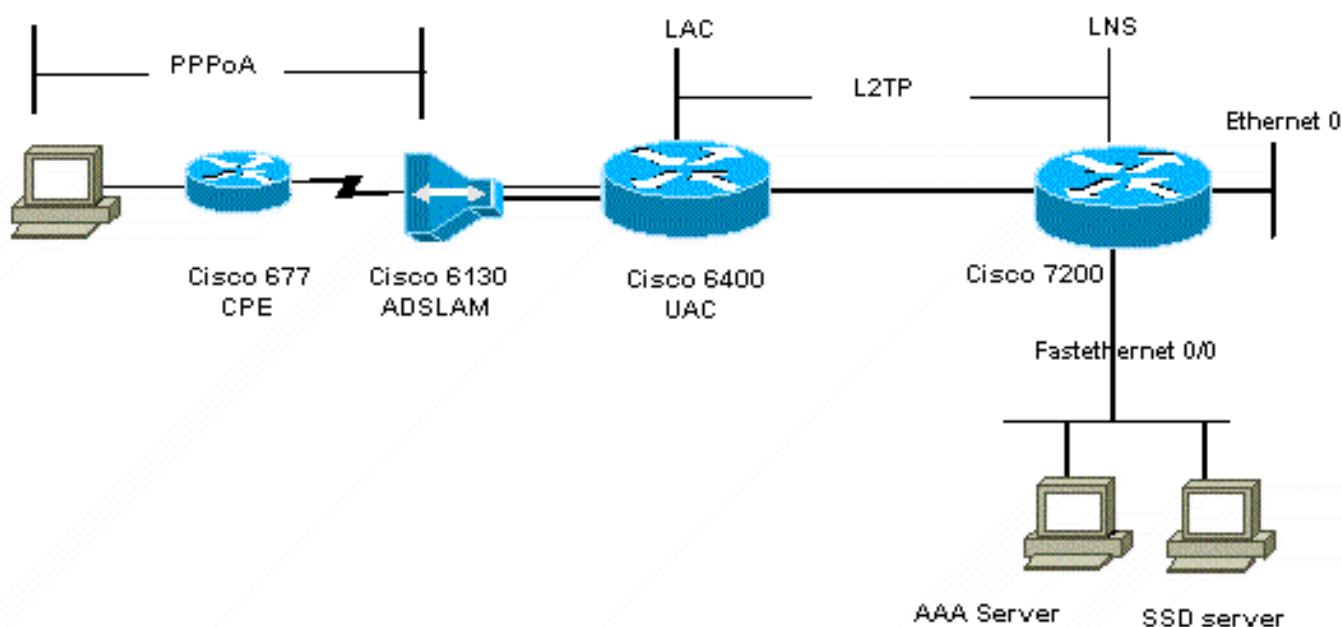
配置

本部分提供有关如何配置本文档所述功能的信息。

注意：要查找本文档所用命令的其他信息，请使用[命令查找工具](#)（[仅限注册用户](#)）。

网络图

本文档使用下图所示的网络设置。



配置

本文档使用如下所示的配置。

- [Cisco 6400 LAC \(airelle_nrp3\)](#)
- [Cisco 7204 LNS \(主机名ior\)](#)

- [Cisco 677](#)

Cisco 6400 LAC (airelle_nrp3)

Cisco 7204 LNS (主机名ior)

在您实现新的配置前，您必须重置Cisco 677到其默认配置。恢复默认配置使用**set nvram erase**命令;例如：

```
cbos#set nvram eraseErasing running configuration.You must use "write" for changes to be permanent.cbos#writeNVRAM written.cbos#reboot
```

启用在Cisco 677 Cisco宽带操作系统(CBOS)的DHCP服务器功能自动地创建池名为"pool0"并且分配10.0.0.0子网与255.255.255.0掩码的。默认情况下，Cisco 677以太网接口的IP地址分配10.0.0.1地址，并且"pool0"然后能租用在10.0.0.2和10.0.0.254之间的IP地址本地LAN clients/PC的

Cisco 677

cbos#set nvram eraseErasing running configuration.You must use "write" for changes to be permanent.cbos#writeNVRAM written.cbos#reboot
--

[RADIUS 配置文件](#)

以下远程拨入用户服务(RADIUS)配置文件是为远程用户和为服务。

- [远程用户希沙姆档案](#)
- [配置文件服务组传播](#)
- [服务组城市配置文件](#)
- [cairo.com服务配置文件](#)
- [下一跳表配置文件](#)

远程用户希沙姆档案

cbos#set nvram eraseErasing running configuration.You must use "write" for changes to be permanent.cbos#writeNVRAM written.cbos#reboot
--

配置文件服务组传播

cbos#set nvram eraseErasing running configuration.You must use "write" for changes to be permanent.cbos#writeNVRAM written.cbos#reboot
--

服务组城市配置文件

cbos#set nvram eraseErasing running configuration.You must use "write" for changes to be permanent.cbos#writeNVRAM written.cbos#reboot
--

cairo.com服务配置文件

cbos#set nvram eraseErasing running configuration.You must use "write" for changes to be permanent.cbos#writeNVRAM written.cbos#reboot
--

下一跳表配置文件

cbos#set nvram eraseErasing running configuration.You must use "write" for changes to be permanent.cbos#writeNVRAM written.cbos#reboot
--

验证

当前没有可用于此配置的验证过程。

故障排除

单一登录 SSD 2.5.1 的特性是什么？

此功能适用对SSD服务器。当SSD服务器找不到在其缓存数据库的一个主机对象发送HTTP数据流时的远程客户端的，发送访问请求对SSG。如果SSG有一个主机对象，发送访问接受消息对SSD。用户能然后准许对服务的访问。

如果没有在SSD或SSG的主机对象，则用户在与正常SSD登录认证程序的SSD应该验证。

配置 SSG 和 SSD 之前，需要了解什么？

在您配置SSD或SSG前，您必须验证以下：

- SSD、SSG，并且验证、授权和统计(AAA)是所有运行和所有网络实体能互相ping。
- 远程用户能在注册前ping在默认网络(SSG的所有主机，SSD，AAA)到SSD服务器。
- 网络接入提供商(NAP)，在这种情况下Cisco 6400 NRP1，能ping服务目的网络。
- 远程客户端不能ping远程服务目的地网络。

在启动 PPPoA 会话之后和设置 SSD 登录之前应做什么？

在所有SSG命令配置后，您必须验证用户服务的下一跳表顺利地下载。发出**show ssg binding**命令。

```
arielle_nrp3# show ssg bindingcairo.com_key -> 14.14.14.5 (NHT)arielle_nrp3# show ssg
next-hopNext hop table loaded from profile nxthoptbl:cairo.com_key -> 14.14.14.5End of
next hop table.
```

检查所有您的方向捆绑是活跃的在SSG。

```
arielle_nrp3# show ssg directionVirtual-Template66: Downlink!--- You can verify this by enabling
debug ssg ctrl-events after the !--- remote user tries to initiate its PPPoA session to access
the NRP.Jun 18 02:13:12.791: SSG-CTL-EVN: Handling PPP logon for user hisham.Jun 18
02:13:12.791: SSG-CTL-EVN: Locate/create SSG sub-block from/for Virtual-Access3.Jun 18
02:13:12.791: SSG-CTL-EVN: Checking for old HostObject in the sub-block.Jun 18 02:13:12.791:
SSG-CTL-EVN: SSG: pppterm: NO extra data for PPP logonJun 18 02:13:12.791: SSG-CTL-EVN:
Authenticating user hisham for PPP logon.Jun 18 02:13:12.799: SSG-CTL-EVN: Creating HostObject
for the PPP user hisham.Jun 18 02:13:12.799: SSG-CTL-EVN: Set Host Mac Address .Jun 18
02:13:12.799: SSG-CTL-EVN: ** attr->type = 6Jun 18 02:13:12.799: SSG-CTL-EVN: ATTR_LOOP = 1Jun
18 02:13:12.799: SSG-CTL-EVN: ** attr->type = 7Jun 18 02:13:12.799: SSG-CTL-EVN: ATTR_LOOP =
2Jun 18 02:13:12.799: SSG-CTL-EVN: ATTR_LOOP = 3Jun 18 02:13:12.799: SSG-CTL-EVN: ATTR_LOOP =
4Jun 18 02:13:12.799: SSG-CTL-EVN: PPP logon for user hisham is accepted.The link is Virtual-
Access3Jun 18 02:13:12.799: SSG-CTL-EVN: Bind the HostObject to Virtual-Access3.!--- Downlink
binding success.Jun 18 02:13:12.867: SSG-CTL-EVN: IPCP is up. Locate SSG sub-block from Virtual-
Access3.Jun 18 02:13:12.871: SSG-CTL-EVN: Locate HostObject from the sub-block.Jun 18
02:13:12.871: SSG-CTL-EVN: Set Host IP 212.93.193.114.!--- Host object is created.Jun 18
02:13:12.879: SSG-CTL-EVN: Host Mac Address lookup failedJun 18 02:13:12.879: SSG-CTL-EVN:
Activate the HostObject.Link=Virtual-Access3!--- Host object is active.Jun 18 02:13:12.879: SSG-
CTL-EVN: ##### ssg_l2tp_ip_up:03:49:01: %LINEPROTO-5-UPDOWN: Line protocol on Interface Virtual-
```

Access3,changed state to up

当客户端启动HTTP会话对SSD服务器时，用户看到SSD服务器登录主页。

注意：切记通过发出unix shell命令`root@crazyball[/export/home/ssd251/ssd]startSSD.sh`开始SSD服务器操作。

如何测试 SSD 单一登录功能？

1. 配置参数(REAUTHENTICATE=off)在dashboard.conf文件。默认值是 REAUTHENTICATE=on。
2. 对任何网页的登录在SSD。例如，而您被注册对cairo.com服务主页，请关闭您的浏览器，再然后打开它与`http://10.200.56.40:8080`。

在SSD的主机对象仍然在缓存，因此您应该能再登录到SSD服务页您被记录了在以前上。默认行为是重新鉴别在SSD;即您必须达到SSD登录主页。

如何运行 SSD 调试？

1. 键入在浏览器的地址栏的`https://10.200.56.40:8443/log`。
2. 点击**集合选项**。所有调试您选择运行，并且输出登陆日志文件。日志文件名的格式是 `yy_mm_dd.request.log`。
3. 导航对在日志文件驻留的SSD服务器的目录。
4. 使用UNIX编辑器，请打开文件`/export/home/ssd251/ssd/logs/vi yy_mm_dd.request.log`查看 debug输出。

调试输出示例

NRP1 输出

```
arielle_nrp3# show debuggingSSG:SSG data path packets debugging is onSSG control path events debugging is onSSG control path packets debugging is onSSG packets debugging is onRadius protocol debugging is onJust before the SSD logon, the output of these debugs are :Jun 18 23:30:08.414:SSG-DATA:CEF-SSGSubBlock=0(AT0/0/0.61:0.0.0.0->0.0.0.0)Jun 18 23:30:09.530:SSG-DATA:CEF-FIB_FLAG_RECEIVE=1(Vi3:212.93.193.114->10.200.56.6)Jun 18 23:30:11.142:SSG-DATA:CEF-SSGSubBlock=0(AT0/0/0.61:0.0.0.0->0.0.0.0)Jun 18 23:30:11.494:SSG-DATA:CEF-FIB_FLAG_RECEIVE=1(Vi3:212.93.193.114->10.200.56.6)Jun 18 23:30:12.482:SSG-DATA:CEF-FIB_FLAG_RECEIVE=1(Vi3:212.93.193.114->10.200.56.6)Jun 18 23:30:13.310:SSG-DATA:CEF-SSGSubBlock=0(AT0/0/0.61:0.0.0.0->0.0.0.0)Jun 18 23:30:14.462:Jun 18 23:39:39.610: SSG-DATA:CEF-SSGSubBlock=0(Fa0/0/0:0.0.0.0->0.0.0.0)Jun 18 23:39:39.638:SSG-DATA:CEF-UP-DefaultNetwork=1(Vi3:212.93.193.114->10.200.56.40)Jun 18 23:39:39.638:SSG-DATA:CEF-UP-DefaultNetwork=1(Vi3:212.93.193.114->10.200.56.40)Jun 18 23:39:39.642: SSG-DATA:CEF-SSGSubBlock=0(Fa0/0/0:0.0.0.0->0.0.0.0)Jun 18 23:39:39.642:SSG-DATA:CEF-UP-DefaultNetwork=1(Vi3:212.93.193.114->10.200.56.40)Jun 18 23:39:39.646: SSG-DATA:CEF-SSGSubBlock=0(Fa0/0/0:0.0.0.0->0.0.0.0)Jun 18 23:39:39.674:SSG-DATA:CEF-UP-DefaultNetwork=1(Vi3:212.93.193.114->10.200.56.40)Jun 18 23:39:39.678:SSG-DATA:CEF-UP-DefaultNetwork=1(Vi3:212.93.193.114->10.200.56.40)Jun 18 23:39:39.678: SSG-DATA:CEF-SSGSubBlock=0(Fa0/0/0:0.0.0.0->0.0.0.0)Jun 18 23:39:39.682:SSG-DATA:CEF-UP-DefaultNetwork=1(Vi3:212.93.193.114->10.200.56.40)Jun 18 23:39:39.686:SSG-DATA:CEF-UP-DefaultNetwork=1(Vi3:212.93.193.114->10.200.56.40)Jun 18 23:39:39.686: SSG-DATA:CEF-SSGSubBlock=0(Fa0/0/0:0.0.0.0->0.0.0.0)Jun 18 23:39:39.698: SSG-DATA:CEF-SSGSubBlock=0(Fa0/0/0:0.0.0.0->0.0.0.0)Jun 18 23:39:39.742: SSG-DATA:CEF-SSGSubBlock=0(Fa0/0/0:0.0.0.0->0.0.0.0)Jun 18 23:39:39.926: SSG-DATA:CEF-SSGSubBlock=0(Fa0/0/0:0.0.0.0->0.0.0.0)Jun 18 23:39:39.926: SSG-DATA:CEF-SSGSubBlock=0(Fa0/0/0:0.0.0.0->0.0.0.0)Jun 18 23:39:39.926: SSG-DATA:CEF-SSGSubBlock=0(Fa0/0/0:0.0.0.0->0.0.0.0)Jun 18 23:39:39.926: SSG-DATA:CEF-
```

```

SSGSubBlock=0(Fa0/0/0:0.0.0.0->0.0.0.0)Jun 19 00:39:17.477: RADIUS: Initial Transmit id 18
10.200.56.16:1645,Access-Request, len 58Jun 19 00:39:17.477: Attribute 4 6 D45DC301Jun
19 00:39:17.477: Attribute 61 6 00000000Jun 19 00:39:17.477: Attribute 1 8
68697368Jun 19 00:39:17.477: Attribute 2 18 31B0CDC2Jun 19 00:39:17.481: SSG-DATA:CEF-
SSGSubBlock=0(Fa0/0/0:0.0.0.0->0.0.0.0)Jun 19 00:39:17.481: RADIUS: Received from id 18
10.200.56.16:1645,Access-Accept, len 70Jun 19 00:39:17.481: Attribute 6 6 00000002Jun 19
00:39:17.481: Attribute 7 6 00000001Jun 19 00:39:17.481: Attribute 26 20
00000009FA0E4754Jun 19 00:39:17.481: Attribute 26 18 00000009FA0C4742Jun 19
00:39:17.481: RADIUS: saved authorization data for user 61E73934 at61E72A58Jun 19 00:39:17.481:
SSG-CTL-EVN: Creating HostObject for host212.93.193.114.Jun 19 00:39:17.489: SSG-CTL-EVN: Set
Host Mac Address .Jun 19 00:39:17.489: SSG-CTL-EVN: ** attr->type = 6Jun 19 00:39:17.489: SSG-
CTL-EVN: ATTR_LOOP = 1Jun 19 00:39:17.489: SSG-CTL-EVN: ** attr->type = 7Jun 19 00:39:17.493:
SSG-CTL-EVN: ATTR_LOOP = 2Jun 19 00:39:17.493: SSG-CTL-EVN: ATTR_LOOP = 3Jun 19 00:39:17.493:
SSG-CTL-EVN: ATTR_LOOP = 4Jun 19 00:39:17.493: SSG-CTL-EVN: Account logon is
accepted(212.93.193.114,hisham).arielle_nrp3# show ssg host 212.93.193.114-----
-- HostObject Content -----Activated: TRUEInterface: Virtual-Access3User Name:
hishamHost IP: 212.93.193.114Msg IP: 10.200.56.40 (9902)Host DNS IP: 0.0.0.0Maximum Session
Timeout: 0 secondsHost Idle Timeout: 0 secondsClass Attr: NONEUser logged on since: 01:54:33.000
UTC Tue Jun 19 2001User last activity at: 01:54:33.000 UTC Tue Jun 19 2001Default Service:
NONEDNS Default Service: NONEActive Services: NONE!--- No Services are active yet.AutoService:
NONESubscribed Services:The following output also results from the debug commands that are
turned on before the SSD logon. Jun 19 02:06:39.529:SSG-DATA:CEF-
FIB_FLAG_RECEIVE=1(Vi3:212.93.193.114->10.200.56.6)Jun 19 02:06:40.789:SSG-DATA:CEF-
MulticastDest=1(AT0/0/0.61:14.14.14.5->224.0.0.10)Jun 19 02:06:41.581:SSG-DATA:CEF-
FIB_FLAG_RECEIVE=1(Vi3:212.93.193.114->10.200.56.6)Jun 19 02:06:42.509:SSG-DATA:CEF-
FIB_FLAG_RECEIVE=1(Vi3:212.93.193.114->10.200.56.6)Jun 19 02:06:43.313:SSG-DATA:CEF-UP-
DefaultNetwork=1(Vi3:212.93.193.114->10.200.56.40)Jun 19 02:06:43.313: SSG-DATA:CEF-
SSGSubBlock=0(Fa0/0/0:0.0.0.0->0.0.0.0)Jun 19 02:06:43.349:SSG-DATA:CEF-UP-
DefaultNetwork=1(Vi3:212.93.193.114->10.200.56.40)Jun 19 02:06:43.353:arielle_nrp3# show ssg
host 212.93.193.114----- HostObject Content -----Activated:
TRUEInterface: Virtual-Access3User Name: hishamHost IP: 212.93.193.114Msg IP: 10.200.56.40
(9902)!--- Message server IP & port address, and TCP port used. !--- This is configured in the
dashboard.conf file.Host DNS IP: 0.0.0.0Maximum Session Timeout: 0 secondsHost Idle Timeout: 0
secondsClass Attr: NONEUser logged on since: 01:54:33.000 UTC Tue Jun 19 2001User last activity
at: 01:54:33.000 UTC Tue Jun 19 2001Default Service: NONEDNS Default Service: NONEActive
Services: NONEAutoService: NONESubscribed Services:arielle_nrp3#

```

这时用户未注册对任何服务。客户端首先看到中东，开罗，然后在服务列表的Egyptian Capital在SSD网页。在客户端点击Egyptian Capital后，用户名和密码字段在页上出现。活动服务未关联给客户端。客户端提供获得访问到cairo.com服务的用户名和密码必须匹配由L2TP网络服务器的那些(LNS)配置。在此设置，LNS验证用户本地。用户名是ayman@cairo.com，并且密码是ayman。

(LAC) L2TP 接入集中器输出

```

arielle_nrp3# show debugging SSG:SSG data path packets debugging is onSSG control path events
debugging is onSSG control path packets debugging is onSSG packets debugging is onVPN:L2X
protocol events debugging is onL2X data packets debugging is onL2X control packets debugging is
onL2TP data sequencing debugging is onRadius protocol debugging is onJun 19 02:34:48.121:SSG-
DATA:CEF-FIB_FLAG_RECEIVE=1(Vi3:212.93.193.114->10.200.56.6)Jun 19 02:34:48.157:SSG-DATA:CEF-
FIB_FLAG_RECEIVE=1(Vi3:212.93.193.114->10.200.56.6)Jun 19 02:34:49.681:SSG-DATA:CEF-UP-
DefaultNetwork=1(Vi3:212.93.193.114->10.200.56.40)Jun 19 02:34:49.685: SSG-DATA:CEF-
SSGSubBlock=0(Fa0/0/0:0.0.0.0->0.0.0.0)Jun 19 02:34:49.717:SSG-DATA:CEF-UP-
DefaultNetwork=1(Vi3:212.93.193.114->10.200.56.40)Jun 19 02:34:49.725:SSG-DATA:CEF-UP-
DefaultNetwork=1(Vi3:212.93.193.114->10.200.56.40)Jun 19 02:34:49.725: SSG-DATA:CEF-
SSGSubBlock=0(Fa0/0/0:0.0.0.0->0.0.0.0)Jun 19 02:34:49.777: SSG-DATA:CEF-
SSGSubBlock=0(Fa0/0/0:0.0.0.0->0.0.0.0)Jun 19 02:34:49.777: SSG-CTL-PAK: Received
Packet:sIP=10.200.56.40 sPort=37638 dIP=10.200.56.6 dPort=1645Jun 19 02:34:49.777: header:
code=1, id=19, len=102,auth=3F53BB3F2939DAA1E5D9435792491CD3Jun 19 02:34:49.777: attr:
type=1, len=17, val=ayman@cairo.comJun 19 02:34:49.777: attr: type=2, len=18,
val=(89)(C4)/}(BB)(8F)Jun 19 02:34:49.777: attr: type=6, len=6, val=(00)(00)(00)(02)Jun 19
02:34:49.777: attr: type=26, len=23,Jun 19 02:34:49.777: SSG-CTL-EVN: Downloading service
profile for servicecairo.com.Jun 19 02:34:49.777: RADIUS: ustruct sharecount=1Jun 19
02:34:49.777: RADIUS: Initial Transmit id 73 10.200.56.16:1645,Access-Request, len 67Jun 19

```

```

02:34:49.777:      Attribute 4 6 D45DC301Jun 19 02:34:49.777:      Attribute 61 6
00000000Jun 19 02:34:49.777:      Attribute 1 11 63616972Jun 19 02:34:49.777:
Attribute 2 18 51CF64B7Jun 19 02:34:49.777:      Attribute 6 6 00000005Jun 19 02:34:49.785:
SSG-DATA:CEF-SSGSubBlock=0(Fa0/0/0:0.0.0.0->0.0.0.0)Jun 19 02:34:49.785: RADIUS: Received from
id 73 10.200.56.16:1645,Access-Accept, len 275Jun 19 02:34:49.785:      Attribute 6 6
00000005Jun 19 02:34:49.785:      Attribute 26 27 0000000901157670Jun 19 02:34:49.785:
Attribute 26 40 0000000901227670Jun 19 02:34:49.785:      Attribute 26 30 0000000901187670Jun
19 02:34:49.785:      Attribute 26 37 00000009011F7670Jun 19 02:34:49.789: SSG-CTL-EVN: #####
ssg_l2tp_disc_cause: termCause=1026Jun 19 02:34:49.789: SSG-CTL-EVN: ssg_l2tp_disc_routine:Jun
19 02:34:49.801: SSG-CTL-EVN: Checking service mode.Jun 19 02:34:49.801: SSG-CTL-EVN:
ServiceLogon: Enqueue request of servicecairo.comarielle_nrp3# show ssg host 212.93.193.114-----
----- HostObject Content -----Activated: TRUEInterface: Virtual-
Access3User Name: hishamHost IP: 212.93.193.114Msg IP: 10.200.56.40 (9902)Host DNS IP:
0.0.0.0Maximum Session Timeout: 0 secondsHost Idle Timeout: 0 secondsClass Attr: NONEUser logged
on since: 01:54:33.000 UTC Tue Jun 19 2001User last activity at: 02:34:49.000 UTC Tue Jun 19
2001Default Service: NONEDNS Default Service: NONEActive Services: cairo.com!--- A service is
active.AutoService: NONESubscribed Services:arielle_nrp3# show ssg service cairo.com-----
----- ServiceInfo Content -----Uplink IDB:Name: cairo.comType:
TUNNELMode: CONCURRENTService Session Timeout: 0 secondsService Idle Timeout: 0
secondsAuthentication Type: CHAPNext Hop Gateway Key: cairo.com_keyDNS Server(s):TunnelId:
napTunnelPassword: CAIROHomeGateway Addresses: 15.15.15.5Included Network
Segments:15.15.15.4/255.255.255.252Excluded Network Segments:ConnectionCount 1Full User Name not
usedDomain List: cairo.com;Active Connections:1      : RealIP=212.93.197.114,
Subscriber=212.93.193.114----- End of ServiceInfo Content -----

```

在以上输出，RealIP是业务网给的IP地址对用户Hisham。字段显示IP地址用户Hisham的用户通过SSG NRP访问网络给。

```

arielle_nrp3# show ssg connection 212.93.193.114 cairo.com-----
ConnectionObject Content ----- User Name: ayman@cairo.com Owner Host:
212.93.193.114 Associated Service: cairo.com Connection State: 0 (UP) Connection Started since:
02:34:51.000 UTC Tue Jun 19 2001 User last activity at: 02:34:51.000 UTC Tue Jun 19 2001
Connection Real IP: 212.93.197.114 L2TP VIDB: Virtual-Access4 L2TP Session Key: 0 Connection
Traffic Statistics: Input Bytes = 0 (HI = 0), Input packets = 0 Output Bytes = 0 (HI = 0),
Output packets = 0

```

[LNS 输出](#)

```

ior# show debugging VPNL2X protocol events debugging is onL2X data packets debugging is onL2X
control packets debugging is onL2TP data sequencing debugging is on*Jun 18 19:27:09.851 PDT:
L2X: Parse AVP 0, len 8, flag 0x8000 (M)*Jun 18 19:27:09.851 PDT: L2X: Parse SCCRQ*Jun 18
19:27:09.851 PDT: L2X: Parse AVP 2, len 8, flag 0x8000 (M)*Jun 18 19:27:09.851 PDT: L2X:
Protocol Ver 256*Jun 18 19:27:09.851 PDT: L2X: Parse AVP 3, len 10, flag 0x8000 (M)*Jun 18
19:27:09.851 PDT: L2X: Framing Cap 0x0*Jun 18 19:27:09.851 PDT: L2X: Parse AVP 4, len 10, flag
0x8000 (M)*Jun 18 19:27:09.851 PDT: L2X: Bearer Cap 0x0*Jun 18 19:27:09.855 PDT: L2X: Parse AVP
6, len 8, flag 0x0*Jun 18 19:27:09.855 PDT: L2X: I SCCRQ, flg TLS, ver 2, len 128, tnl 0, cl 0,
ns 0, nr 0C8 02 00 80 00 00 00 00 00 00 00 80 08 00 0000 00 00 01 80 08 00 00 00 02 01 00 80
0A 00 0000 03 00 00 00 00 80 0A 00 00 00 04 00 00 00 ...*Jun 18 19:27:09.855 PDT: L2TP: I SCCRQ
from nap tnl 13552*Jun 18 19:27:09.855 PDT: Tnl 4818 L2TP: Got a challenge in SCCRQ, nap*Jun 18
19:27:09.855 PDT: Tnl 4818 L2TP: New tunnel created for remote nap,

```

[相关信息](#)

- [Cisco DSL技术支持](#)
- [技术支持和文档 - Cisco Systems](#)