



Global Settings

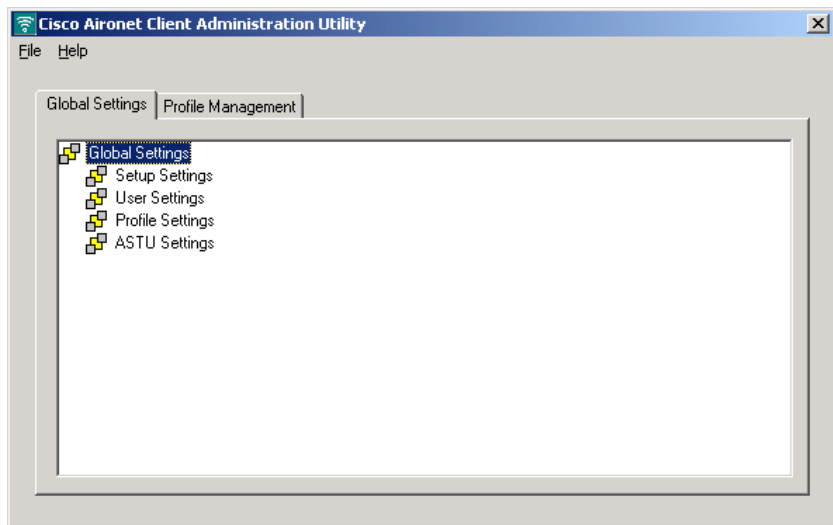
This chapter describes the Global Settings tab components and how to use them. The global settings enable you to create the configuration file that specifies the administrative overrides to invoke when a user installs the client adapter drivers and ADU. The following topics are covered in this chapter:

- [Configuring Setup Settings, page 3-4](#)
- [Configuring User Privileges, page 3-6](#)
- [Configuring Profile Settings, page 3-7](#)
- [Configuring ASTU Settings, page 3-8](#)
- [Saving a Configuration File, page 3-10](#)
- [Retrieving a Configuration File, page 3-11](#)

Global Settings Tab

Then Global Settings tab enables you to override default setup, user, and profile component parameters and create a configuration file used by the Install Wizard when the client adapter software is installed. The Global Settings tab is on the ACAU main window (see [Figure 3-1](#)).

Figure 3-1 Global Settings Window

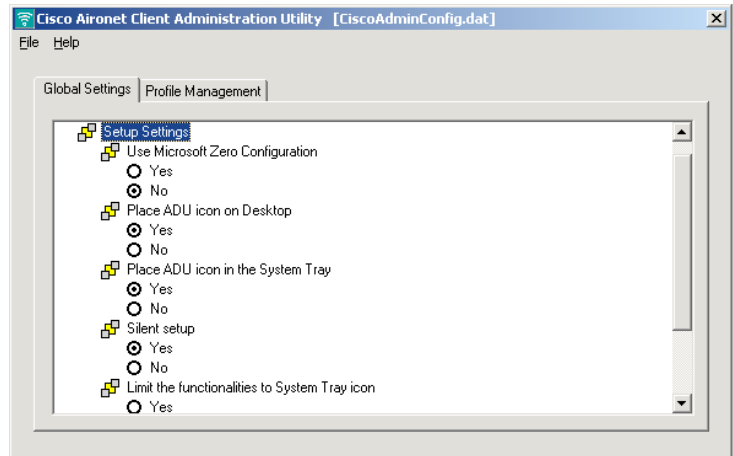


The Global Settings tab enables you to perform the following tasks which provide directions to the Install Wizard when a user installs the client adapter's driver and ADU:

- Configure setup settings
- Configure user settings
- Configure profile settings
- Configure ASTU settings

Double click the component to see its parameters. [Figure 3-2](#) shows the expanded Setup Setting component.

Figure 3-2 Category Components

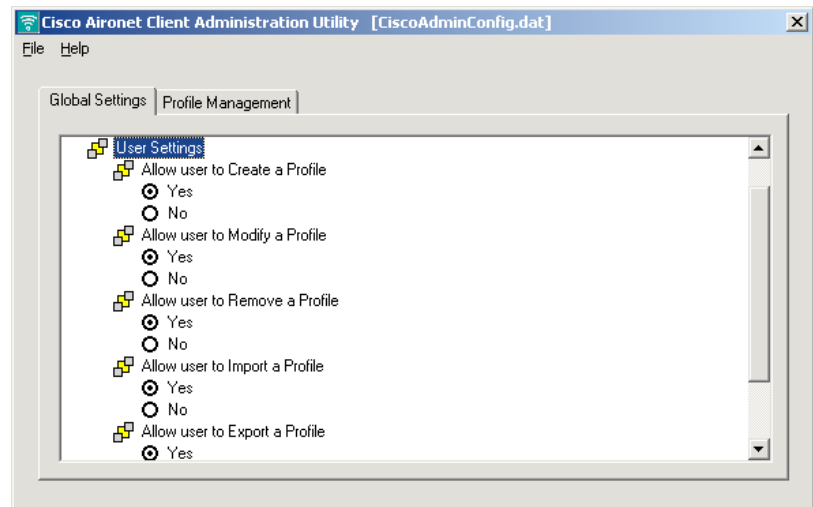


Most parameters have two settings: *Yes* or *No*. To change a parameter, click the value you wish the parameter to be.

Some parameters cannot be installed separately. Therefore, when you select or deselect these parameters, the settings of other component parameters may change. The icon next to the parameter changes color when you select or deselect parameters that cannot be installed separately.

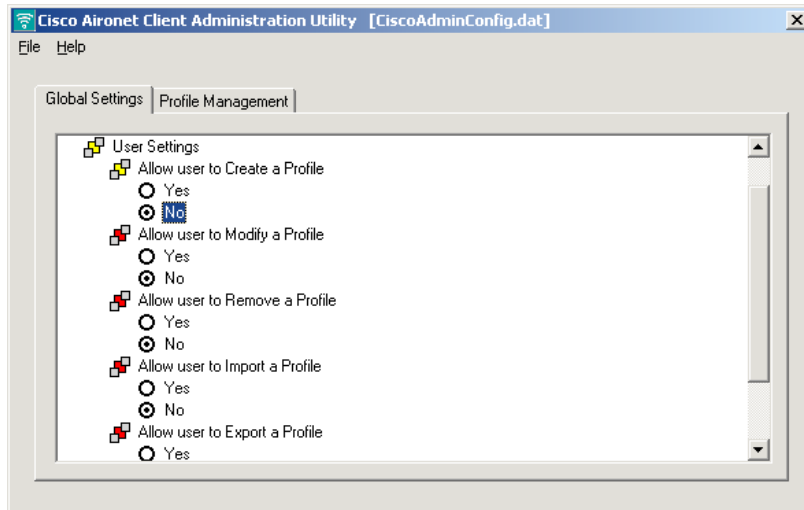
When all parameters are set to *Yes*, the icon consists of two gray boxes overlapping a yellow box (Figure 3-3).

Figure 3-3 Changeable Parameter Icon



For example, if you set the **Allow user to Create a Profile** parameter to *No*, The remaining parameters are also changed to *No* and the yellow box in the icon changes to red (see Figure 3-4).

Figure 3-4 Non-changeable Parameter Icons



Configuring Setup Settings

The Setup Settings component is where you provide setup information that the Install Wizard uses to install the client adapter driver and software on a user's computer. Double-click **Setup Settings** to view the parameters in the component. Table 3-1 identifies and describes the parameters in the Setup Setting component and lists their default values.

Table 3-1 Setup Settings

Parameter	Description
Use Microsoft Zero Configuration Service (Windows XP only)	<p>Manages a Windows XP wireless connection dynamically. Only minimal connection information must be identified and configured.</p> <p>Options: Yes or No</p> <p>Default: No</p> <p>Note For this parameter to take effect, you must set the Zero Configuration on Windows XP. For information and the procedure, see the following documents:</p> <p><i>Cisco Aironet 802.11a/b/g Wireless LAN Client Adapters (CB21AG and PI21AG) Installation and Configuration Guide</i></p> <p><i>Quick Start Guide Cisco Aironet 802.11a/b/g Wireless LAN Adapters (CB21AG and PI21AG)</i></p>
Place ADU Icon on Desktop	<p>Determines whether the ADU icon is placed on the desktop of the user's computer to provide quick access to the utility.</p> <p>Options Yes or No</p> <p>Default: Yes</p>

Table 3-1 Setup Settings (continued)

Parameter	Description
Place ADU icon on the System Tray	<p>Determines whether the ADU icon is placed on the system tray of the user's computer.</p> <p>Options Yes or No</p> <p>Note Default: Yes</p> <p>Note When the ADU icon is on the system tray, the user is able to access the Aironet System Tray Utility (ASTU) by right clicking the ADU icon.</p>
Silent Setup	<p>Specifies whether the Install Wizard installation is accomplished with no user input.</p> <p>Options: Yes or No</p> <p>Default: Yes</p> <p>Note If set to <i>Yes</i>, the ACAU configuration file information is automatically incorporated when the ADU Install Wizard installs or updates files. If set to <i>No</i>, the user is prompted to select the configuration file.</p>
Limit the functionalities to System Tray icon	<p>Specifies whether the ADU icon on the system tray has full or limited functionality. Full functionality includes the following features:</p> <ul style="list-style-type: none"> • Help • Exit • Open Aironet Desktop Utility • Troubleshooting • Disable Radio • Reauthenticate <p>Options: Yes or No</p> <p>Default: No</p> <p>Note If set to <i>Yes</i>, the user is unable to select a profile from the system tray icon.</p> <p>Note The Preferences setting in the ASTU Settings component must be set to <i>Yes</i> in order for this setting to function.</p>

Configuring User Privileges

The User Settings component is where you determine the privileges a user has after the client adapter driver and software are installed. [Table 3-2](#) identifies and describes the parameters in the Setup Setting component and lists their default values.

Table 3-2 *User Settings*

Setting	Description
Allow user to Create a Profile	<p>Determines whether a user can create a profile using the ADU.</p> <p>Options: Yes or No</p> <p>Default: Yes</p> <p>Note If set to <i>No</i>, All parameters in this component are unavailable to the user.</p>
Allow user to Modify a Profile	<p>Determines whether a user can modify a profile using the ADU.</p> <p>Options: Yes or No</p> <p>Default: Yes</p>
Allow user to Remove a Profile	<p>Determines whether a user can remove a profile using the ADU.</p> <p>Options: Yes or No</p> <p>Default: Yes</p> <p>Note The profile is not deleted from the user's system, only removed from the ADU profile manager. It can be recalled at any time.</p>
Allow user to Import a Profile	<p>Determines whether a user can import a profile using the ADU.</p> <p>Options: Yes or No</p> <p>Default: Yes</p>
Allow user to Export a Profile	<p>Determines whether a user can export a profile using the ADU.</p> <p>Options: Yes or No</p> <p>Default: Yes</p>

Configuring Profile Settings

The Profile Settings component is where you create and configure the active profile used by the ADU after the client adapter driver and software are installed. [Table 3-3](#) identifies and describes the parameters in the Profile Settings component and lists their default values.

Table 3-3 Profile Settings Parameters

Parameter	Description
Enable Profile Management	<p>Enables or disables the ADU's profile management feature.</p> <p>Options: Yes or No</p> <p>Default: Yes</p> <p>Note If set to <i>No</i>, the Profile Management tab in the ADU is not visible to the user and it cannot be selected by right clicking the system tray icon.</p> <p>Note If set to <i>No</i>, all Parameters in the ACAU User Settings component are unavailable.</p>
Update existing Profiles	<p>Determines how the ADU saves user-updated profiles.</p> <p>Options: Overwrite or Append</p> <p>Default: Overwrite</p> <p>Note If <i>Overwrite</i> is selected, all existing profile information stored in the ADU is overwritten with new data from the ACAU configuration file when the ADU is installed.</p> <p>Note If <i>Append</i> is selected, profiles with the same name as those within the ACAU configuration file are refreshed with updated information when the ADU is installed. All other profile information in the ADU is maintained.</p>
Force Auto Select Profiles	<p>Determines whether the user is allowed to manually select a profile in the ADU.</p> <p>Options: Yes or No</p> <p>Default: No</p> <p>Note If <i>Yes</i> is selected, the user is not allowed to manually select a profile in the ADU. Profiles are automatically selected and the Activate button on the ADU Profile Management and Scan Networks windows is not visible.</p>

Configuring ASTU Settings

The ASTU Settings component is where you configure the Aironet System Tray Utility (ASTU). ASTU is an optional application that provides a small subset of the features available through ADU. Specifically, it enables a user to access status information about the client adapter and perform basic tasks. ASTU is available from an icon on the Windows system tray, making it easily accessible and convenient to use. The ASTU icon appears on the system tray only if you have set the Place ADU icon in the System Tray parameter to **Yes**.

The parameters you set when you configure the ASTU Settings component identify what users see after opening ASTU on their computers. [Table 3-4](#) identifies and describes the parameters in the ASTU Settings component and lists their default values.

Table 3-4 ASTU Settings Parameters

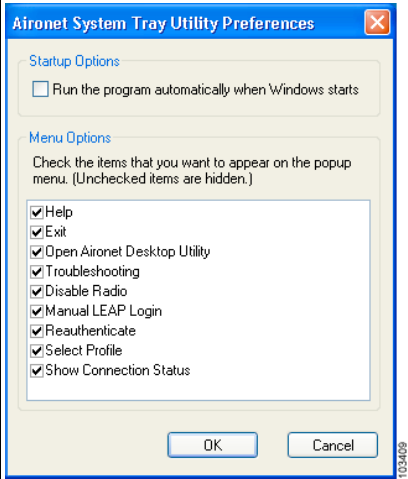
Parameter	Description
Preferences	<p>Determines whether ADU Preferences are available to the user.</p> <p>Options: Yes or No</p> <p>Default: Yes</p> <p>Note If set to <i>Yes</i>, the ASTU Preferences window (shown below) appears when the user right clicks on the ADU icon on the system tray.</p> 
Help	<p>Note If set to <i>No</i>, the user is unable to open this window.</p> <p>Enables the user to access online help from the ASTU.</p> <p>Options: Yes or No</p> <p>Default: Yes</p> <p>Note If set to <i>No</i>, online help is still available on the Help drop-down menu on the ADU's main windows.</p>

Table 3-4 ASTU Settings Parameters (continued)

Parameter	Description
Exit	<p>Determines whether the user can exit ADU from ASTU.</p> <p>Options: Yes or No</p> <p>Default: Yes</p> <p>Note If set to <i>No</i>, the user can still exit ADU using the Exit option in the Action drop-down menu on the main ADU window or by clicking on the X in any ADU main window.</p>
Open Aironet Desktop Utility	<p>Determines whether the user can open ADU from the ASTU.</p> <p>Options: Yes or No</p> <p>Default: Yes</p> <p>Note If set to <i>No</i>, and the Place ADU icon on Desktop setting in the Setup Settings component is set to <i>Yes</i>, the user can open ADU from the Windows desktop.</p>
Troubleshooting	<p>Determines whether the user can run troubleshooting tests from the ASTU.</p> <p>Options: Yes or No</p> <p>Default: Yes</p> <p>Note If set to <i>No</i>, troubleshooting is still available by selecting the Troubleshooting option from the Action drop-down menu or from the Diagnostics tab on the ADU's main window.</p>
Disable Radio	<p>Enables the user to disable or enable the client adapter's radio from the ASTU.</p> <p>Options: Yes or No</p> <p>Default: Yes</p> <p>Note If set to <i>No</i>, the radio can be disabled by selecting the Disable Radio option from the ADU's Action drop-down menu on the main window.</p>
Manual LEAP Login	<p>Enables the user to use the ASTU to manually invoke the authentication process for a profile that is configured to use a manually prompted LEAP username and password.</p> <p>Options: Yes or No</p> <p>Default: Yes</p> <p>Note Refer to "Setting Security Parameters" section on page 4-13 for information on setting a manual LEAP profile and for details on the authentication process.</p>

Table 3-4 ASTU Settings Parameters (continued)

Parameter	Description
Reauthenticate	<p>Enables the user to use the ASTU reauthenticate using the username and password of the active profile.</p> <p>Options: Yes or No</p> <p>Default: Yes</p> <p>Note The feature is only available for LEAP-enabled profiles.</p> <p>Note If set to <i>No</i>, the user can still reauthenticate using the Reauthenticate option from the Action drop-down menu on the ADU's main window.</p>
Select Profile	<p>Enables the user to use the ASTU to select and activate a profile from those available in the Profile Manager.</p> <p>Options: Yes or No</p> <p>Default: Yes</p> <p>Note When the user selects a profile from the list, the client adapter attempts to establish a connection to an access point using the parameters that were configured for that profile. If the client adapter cannot associate to the access point or loses association while using the selected profile, the adapter does not attempt to associate using another profile.</p> <p>Note The option is only available if two or more profiles are included on the profile list.</p> <p>Note If set to <i>No</i>, the user can change profiles using ADU's Profile Manager window.</p>
Show Connection Status	<p>Enables the user to display the Connection Status window.</p> <p>Options: Yes or No</p> <p>Default: Yes</p> <p>Note If set to <i>No</i>, the Connection Status window is not available to the user from an alternate source in the ADU. A limited amount of status information is available on the ADU's Current Status window.</p>

Saving a Configuration File

When you have finished configuring the Global Settings components and parameters, you must save the configuration file. When you use ACAU the first time and save the file using the **Save** or **Save As** option in the File drop-down menu, ACAU automatically names the file *ciscoadminconfig.dat* and saves it to a path and directory you specify.



Note

You must save the *ciscoadminconfig.dat* file to the drive and directory in which the install wizard (*setup.exe*) resides. If the file is saved to any other location it is not processed by the install wizard.

After you have saved the file the first time, subsequent saves automatically overwrite the existing file to the path and directory you specified when you saved it the first time. To change either the filename or the path, you must use the **Save As** command.

Retrieving a Configuration File

After you have saved a configuration file, you can retrieve it using ACAU. To retrieve a configuration file, use the **Open** option in the File drop-down menu. ACAU remembers the last location saved location and displays that information in the Open window that appears when you select **Open**.

You can browse to another location using standard Windows file management procedures or by entering the complete path in the File name field.

