



Check Subscriber Access

- [Checking Access, on page 1](#)

Checking Access

When you are confident that the installation and configuration tasks are complete and processing properly, try running a small amount of test traffic, following it through the system. Here are three ways to ascertain correct process of access from a subscriber perspective.

Testing Subscriber Access with `00.testAccessRequest.sh`

`00.testAccessRequest.sh` is a test script used to test subscriber access to the ISG and CPS system.

You can find `00.testAccessRequest.sh` in `/opt/broadhop/installer/isg/troubleshooting` directory on the CPS server.

To configure the subscriber used, edit the `/opt/broadhop/installer/isg/troubleshooting/config.ini` file.

Step 1 In the `config.ini` file, change the **User-Name** and **Password** fields.

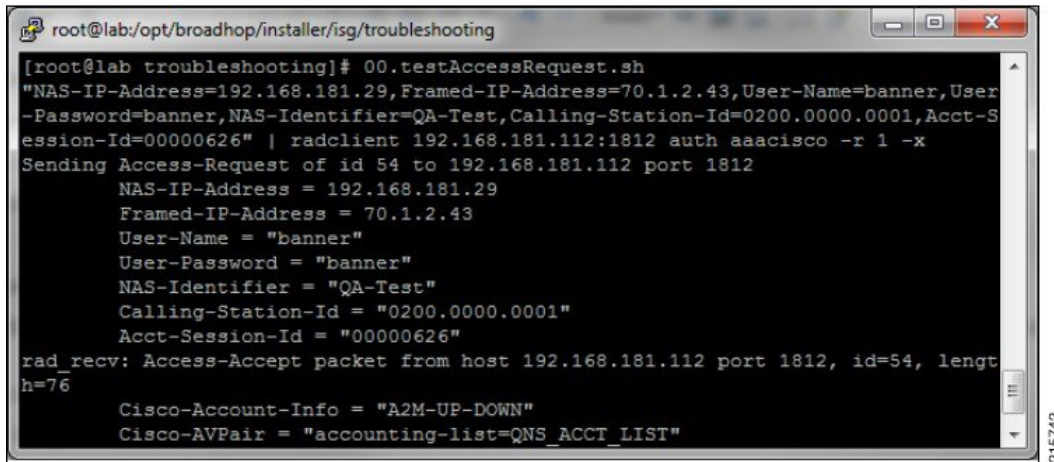
Note You may need to change some of the other parameters in order to match your configuration. The other main attributes to change will be the **NAS-IP-Address** and **Framed-IP-Address**.

Step 2 Run the script from a command line. No arguments are necessary:

`00.testAccessRequest.sh`

Upon success, this output is displayed as follows:

Figure 1: 00.testAccessRequest.sh Output



```

root@lab:/opt/broadhop/installer/isg/troubleshooting
[root@lab troubleshooting]# 00.testAccessRequest.sh
"NAS-IP-Address=192.168.181.29,Framed-IP-Address=70.1.2.43,User-Name=banner,User-Password=banner,NAS-Identifier=QA-Test,Calling-Station-Id=0200.0000.0001,Acct-Session-Id=00000626" | radclient 192.168.181.112:1812 auth aaacisco -r 1 -x
Sending Access-Request of id 54 to 192.168.181.112 port 1812
  NAS-IP-Address = 192.168.181.29
  Framed-IP-Address = 70.1.2.43
  User-Name = "banner"
  User-Password = "banner"
  NAS-Identifier = "QA-Test"
  Calling-Station-Id = "0200.0000.0001"
  Acct-Session-Id = "00000626"
rad_recv: Access-Accept packet from host 192.168.181.112 port 1812, id=54, length=76
  Cisco-Account-Info = "A2M-UP-DOWN"
  Cisco-AVPair = "accounting-list=QNS_ACCT_LIST"

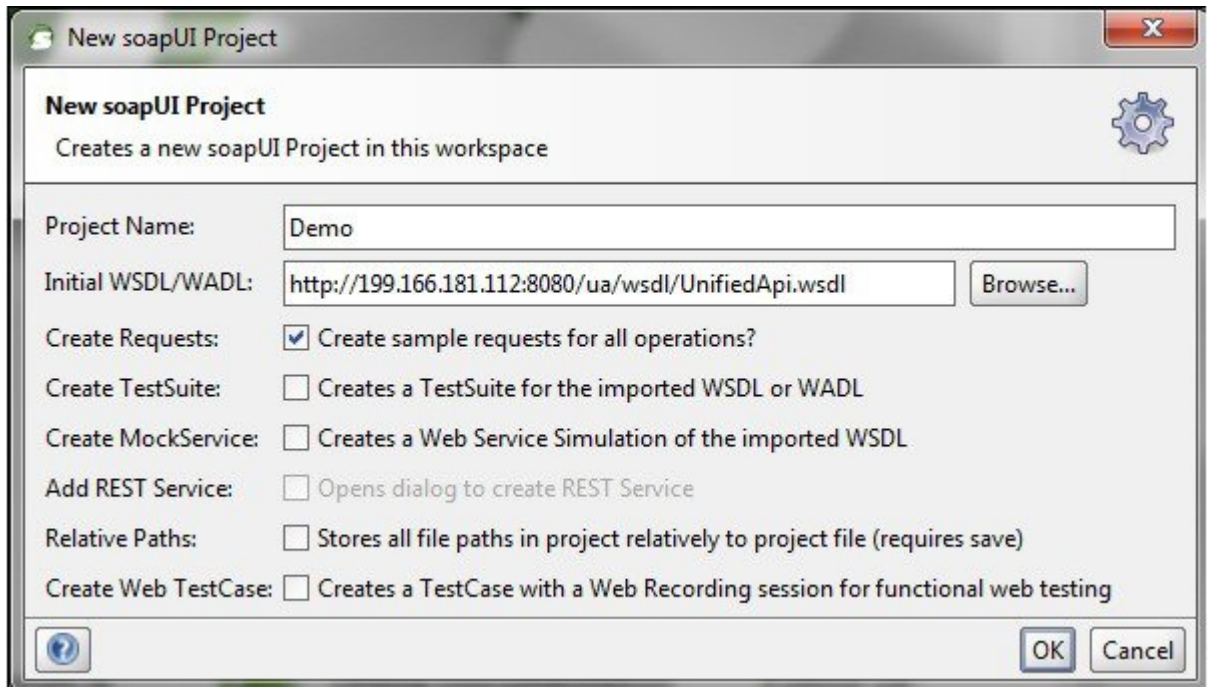
```

Testing Subscriber Access with soapUI

This procedure tests end subscriber access to your system.

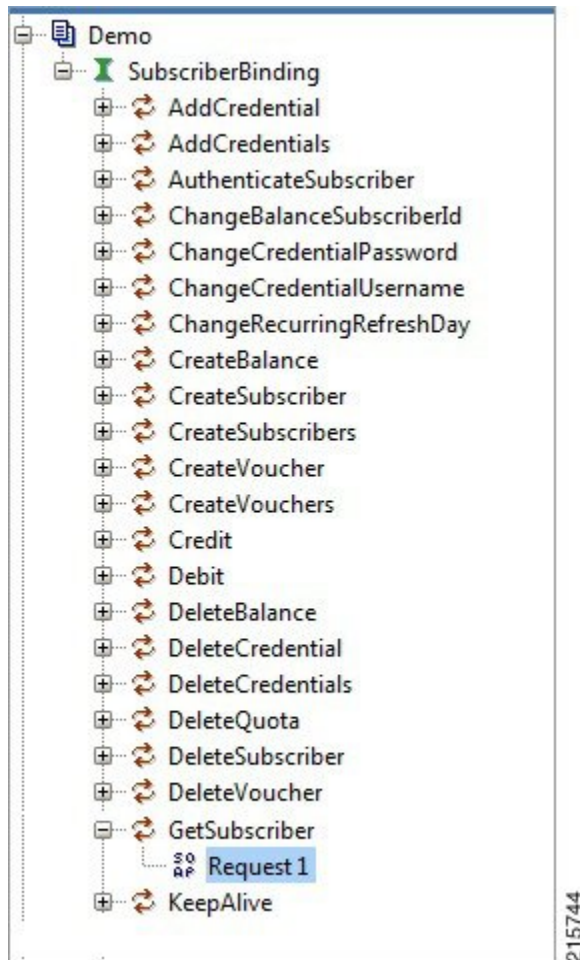
-
- Step 1** Download soapUI from here: <http://www.soapui.org/>
You only need the freeware version (not the soapUI Pro).
- Step 2** Launch soapUI.
- Step 3** Right click on **Projects** and select **New soapUIProject** from the drop-down list.
- Step 4** Name your project and enter into **Initial WSDL/WADL** the appropriate WSDL URL (you may have to replace the IP in display with your own IP) and select **OK**.

Figure 2: New soapUIProject



Step 5 In the tree, select **Demo > SubscriberBinding > GetSubscriber > Request 1** as shown in the following figure:

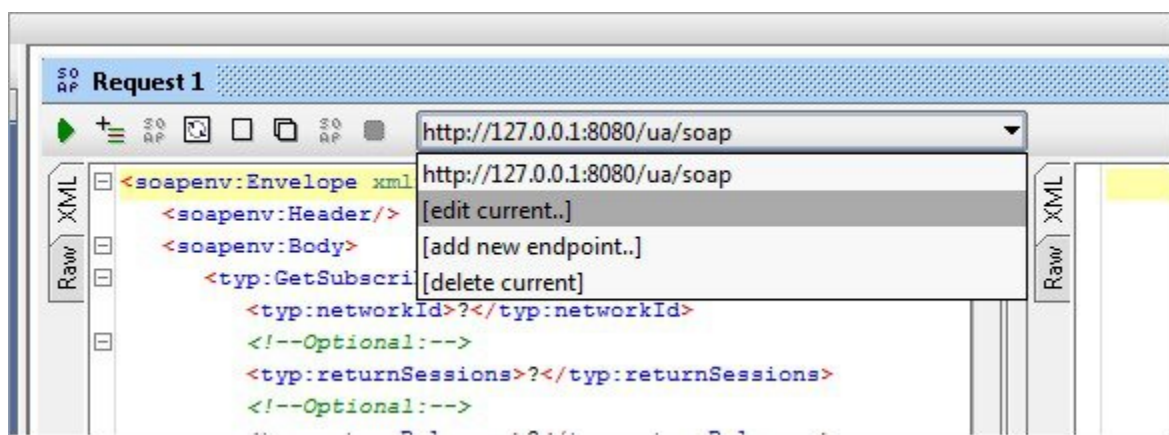
Figure 3: Request 1 Node



215744

Step 6 Select **edit current..** to edit the end point. Enter the appropriate IP.

Figure 4: Request 1 XML File

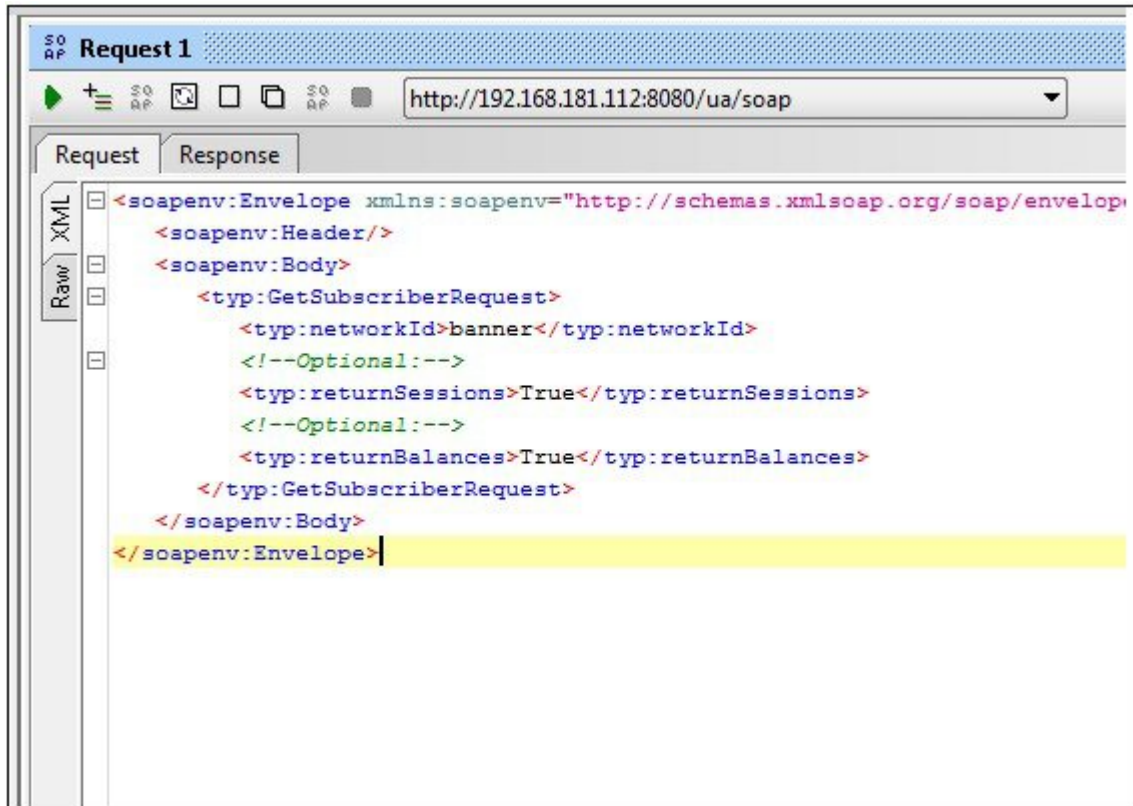


215745

Step 7 In the XML file:

- Replace ? in <typ:networkId>?</typ:networkId> with the appropriate credential or network ID.
- Replace ? in <typ:returnSessions>?</typ:returnSessions> with True.
- Replace ? in <typ:returnBalance>?</typ:returnBalance> with True.

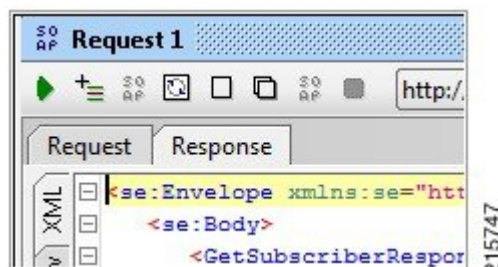
Figure 5: Request 1 XML File



215746

Step 8 Click the green arrow (underneath **Request 1**).

Figure 6: Request 1 XML File



215747

Step 9 Check the resulting XML output. Pay special attention to the relevant subscriber information.

Figure 7: XML Output

```

<se:Envelope xmlns:se="http://schemas.xmlsoap.org/soap/envelope/">
  <se:Body>
    <GetSubscriberResponse xmlns="http://broadhop.com/unifiedapi/soap/types">
      <errorCode>0</errorCode>
      <errorMessage>Request completed successfully</errorMessage>
      <subscriber>
        <id>4fb54d03e4b01e8478d309c2</id>
        <name>
          <fullName>Bruce Banner</fullName>
        </name>
        <credential>
          <networkId>banner</networkId>
          <password>banner</password>
        </credential>
        <credential>
          <networkId>0200.0000.0001</networkId>
          <expirationDate>2012-05-17T13:17:07.020-06:00</expirationDate>
        </credential>
        <service>
          <code>SERVICE_A</code>
          <enabled>true</enabled>
        </service>
        <session>
          <sessionKey>
            <code>UserIdKey</code>
            <primary>false</primary>
            <keyField>
              <code>userId</code>
              <value>banner</value>
            </keyField>
          </sessionKey>
          <sessionObject>
            <entry>
              <string>tags</string>
            </entry>
          </list>
        </session>
      </subscriber>
    </GetSubscriberResponse>
  </se:Body>
</se:Envelope>

```

215748