



Uploading the Cisco MSE/CMX ISO Image to the Cisco MSE 3365/Cisco CMX 3375



Note Make sure the Serial over Lan (SoL) functionality is enabled on the Cisco Unified Communication System (UCS). To enable SoL on the Cisco UCS server, use the **set enabled yes** command. For more information on enabling SoL, refer to the Cisco UCS documentation on Cisco.com.

- [Uploading Cisco CMX ISO Image to Cisco CMX 3375 Using Newer CIMC Versions, on page 1](#)
- [Uploading the Cisco CMX/MSE ISO Image to the Cisco MSE 3365 Using Newer CIMC Versions, on page 6](#)
- [Uploading the Cisco CMX/MSE ISO Image to the Cisco MSE 3365 Using Older CIMC Versions, on page 12](#)

Uploading Cisco CMX ISO Image to Cisco CMX 3375 Using Newer CIMC Versions

The Cisco CMX 3375 Appliance requires Cisco CMX Release 10.5.1 or later. Minimal configuration is done for the Cisco CMX as part of installation using the console. For hardware and software installation information, see the Cisco 3375 Appliance for Cisco Connected Mobile Experiences Installation Guide at: <https://www.cisco.com/c/en/us/support/wireless/connected-mobile-experiences/products-installation-guides-list.html>

- Step 1** Download the Cisco CMX 10.5.1 image from [Download Software](#) on cisco.com.
- Step 2** Power up the Cisco CMX 3375 appliance and configure the CIMC IP Address and user credentials.
- Step 3** Log in to CIMC IP using Internet Explorer.
- Step 4** In the left pane, click **Menu > Compute > BIOS**.
- Step 5** From the **Configured Boot Mode** drop-down list, choose **Legacy**.

Figure 1: BIOS Configured Boot Mode

The screenshot displays the Cisco Integrated Management Controller (CIMC) web interface. The top navigation bar includes the Cisco logo, the title "Cisco Integrated Management Controller", a notification bell with a "1" indicator, and the user "admin@X00X00". Below the navigation bar, the breadcrumb "Chassis / Summary" is visible, along with utility links: "Refresh", "Host Power", "Launch KVM", "Ping", and "CIMC Reboot".

The main content area is divided into two columns. The left column, titled "Server Properties", lists the following information:

- Product Name:
- Serial Number: WZP22210MYV
- PID: AIR-CMX-3375-K9
- UUID: E7D5746A-F059-4E89-B071-98200B90141C
- BIOS Version: C220M5.3.1.3c.0.0307181404
- Description: (empty text box)
- Asset Tag: Unknown

The right column, titled "Cisco Integrated Management Controller (Cisco IMC)", lists the following information:

- Hostname: cmx-3375-4
- IP Address: 172.19.28.202
- MAC Address: 70:0F:6A:ED:7A:B8
- Firmware Version: 3.1(3a)
- Current Time (UTC): Wed Jan 30 03:13:07 2019
- Local Time: Wed Jan 30 03:13:07 2019 UTC +0000
- Timezone: UTC

Below the server properties, there are two sections: "Chassis Status" and "Server Utilization".

The "Chassis Status" section shows the following indicators:

- Power State: On (green circle)
- Overall Server Status: Good (green checkmark)
- Temperature: Good (green checkmark)
- Overall DIMM Status: Good (green checkmark)
- Power Supplies: Good (green checkmark)
- Fans: Good (green checkmark)
- Locator LED: Off (grey circle)

The "Server Utilization" section features a vertical bar chart showing percentage utilization from 40% to 100%. A legend on the right side of the chart includes categories like "CPU", "Memory", and "IO" with corresponding colored boxes and checkboxes.

A "Save Changes" button is located at the bottom right of the interface.

Step 6 Follow the on screen instruction to reboot the system.

Step 7 Click **Configure Boot Order**.

Step 8 In the **Configure Boot Order** window, click **Advanced** tab.

Step 9 Click **Add Virtual Media**.

Step 10 Enter a name for the new virtual media.

Step 11 From the **Sub Type** drop-down list, choose **KVM MAPPED DVD**.

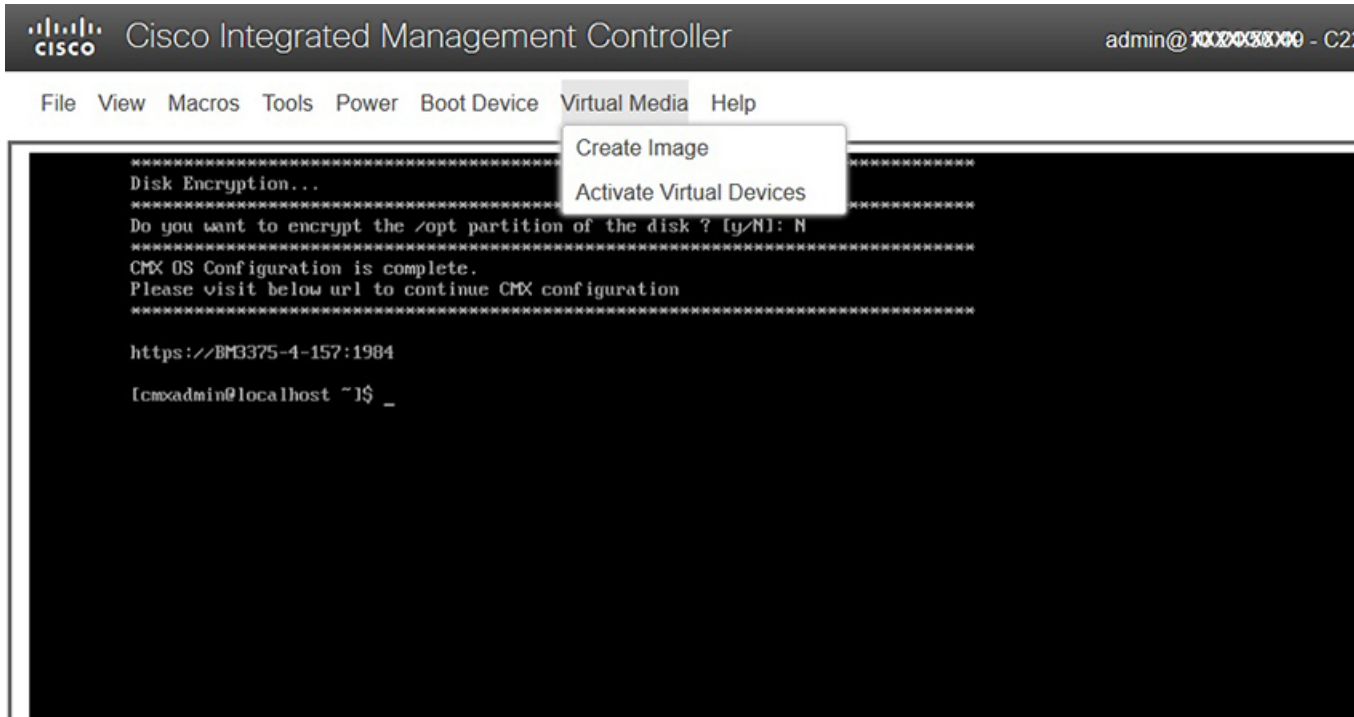
Step 12 Click **Save Changes**.

The new virtual media is created and enabled.

Step 13 Use IE and open KVM. We recommend that you use JAVA Based KVM on IE or Firefox for more consistent results.

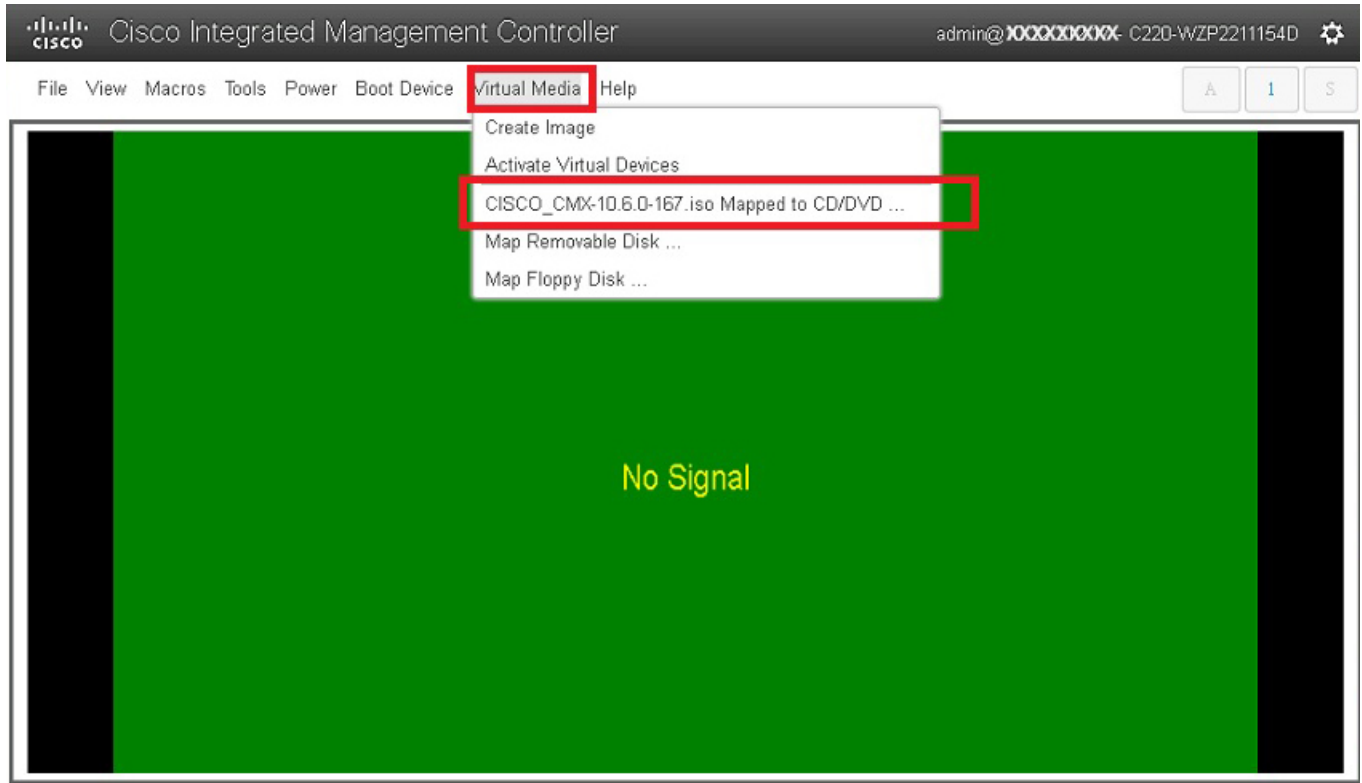
Step 14 Click **Virtual Media > Activate Virtual Devices**.

Figure 2: Activate Virtual Devices



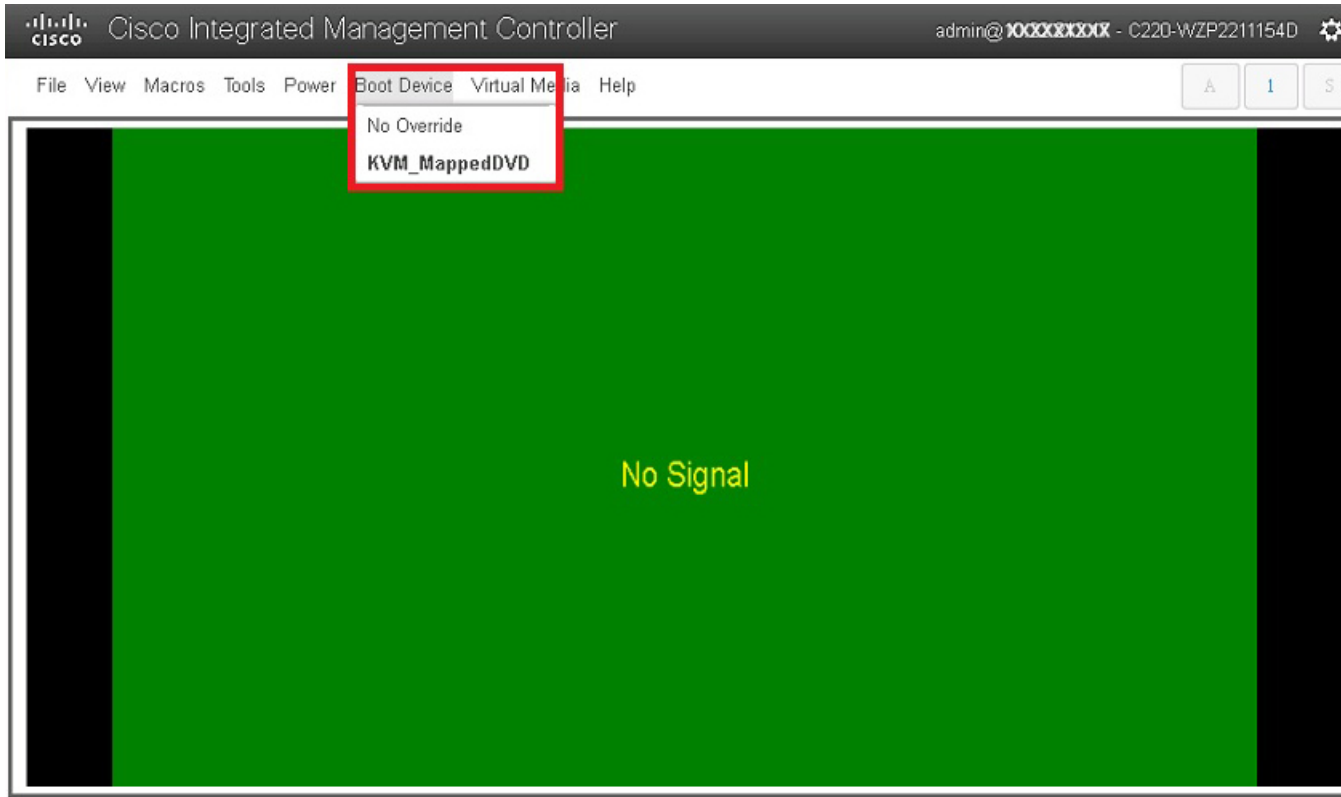
Step 15 Click Map CD/DVD and select image from your local folder.

Figure 3: Virtual Media - Cisco CMX



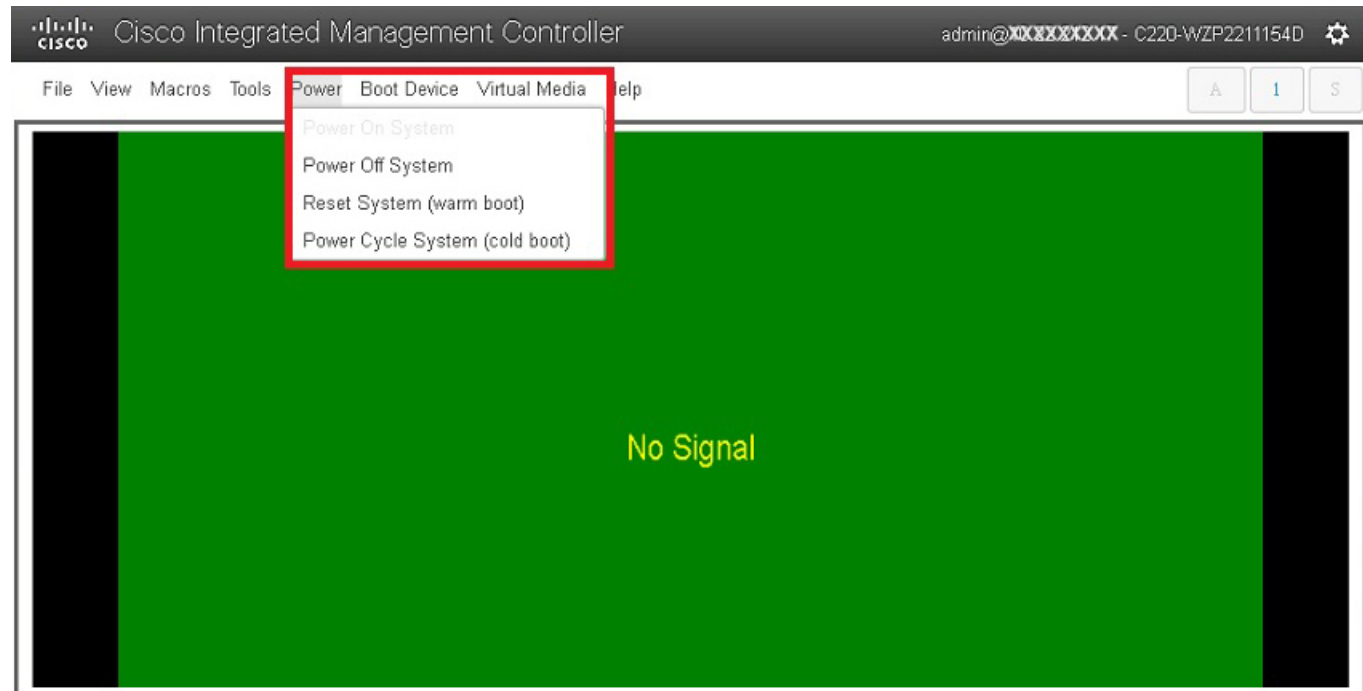
Step 16 Select the Boot Device the name given in step 10.

Figure 4: Boot Device



Step 17 In the KVM, use the **Power** option to power on the Cisco CMX 3375 Appliance.

Figure 5: Boot Device > Power On System



Step 18 After the appliance is rebooted, press **F6** to enter **Boot Menu**.

Step 19 Select **Cisco vKVM Mapped DVD**.

Step 20 Select **Install using Current Console** as the install method.

Step 21 Click **Proceed with install**. Wait for 20 to 30 minutes for copying CMX file.

The system is rebooted after the file is copied. The system is loaded with Centos 7. Cisco CMX welcome window is displayed.

What to do next

For more information about configuring Cisco CMX, see [Configuring Cisco CMX Release 10.5.x and Later](#).

Uploading the Cisco CMX/MSE ISO Image to the Cisco MSE 3365 Using Newer CIMC Versions

MSE 3365 Software Reset is a process used to load the MSE 3365 with a required image (MSE 8.x, or CMX 10.x). The MSE 3365 is a UCS-based device, and can be accessed through the Cisco Integrated Management Controller (CIMC) interface.

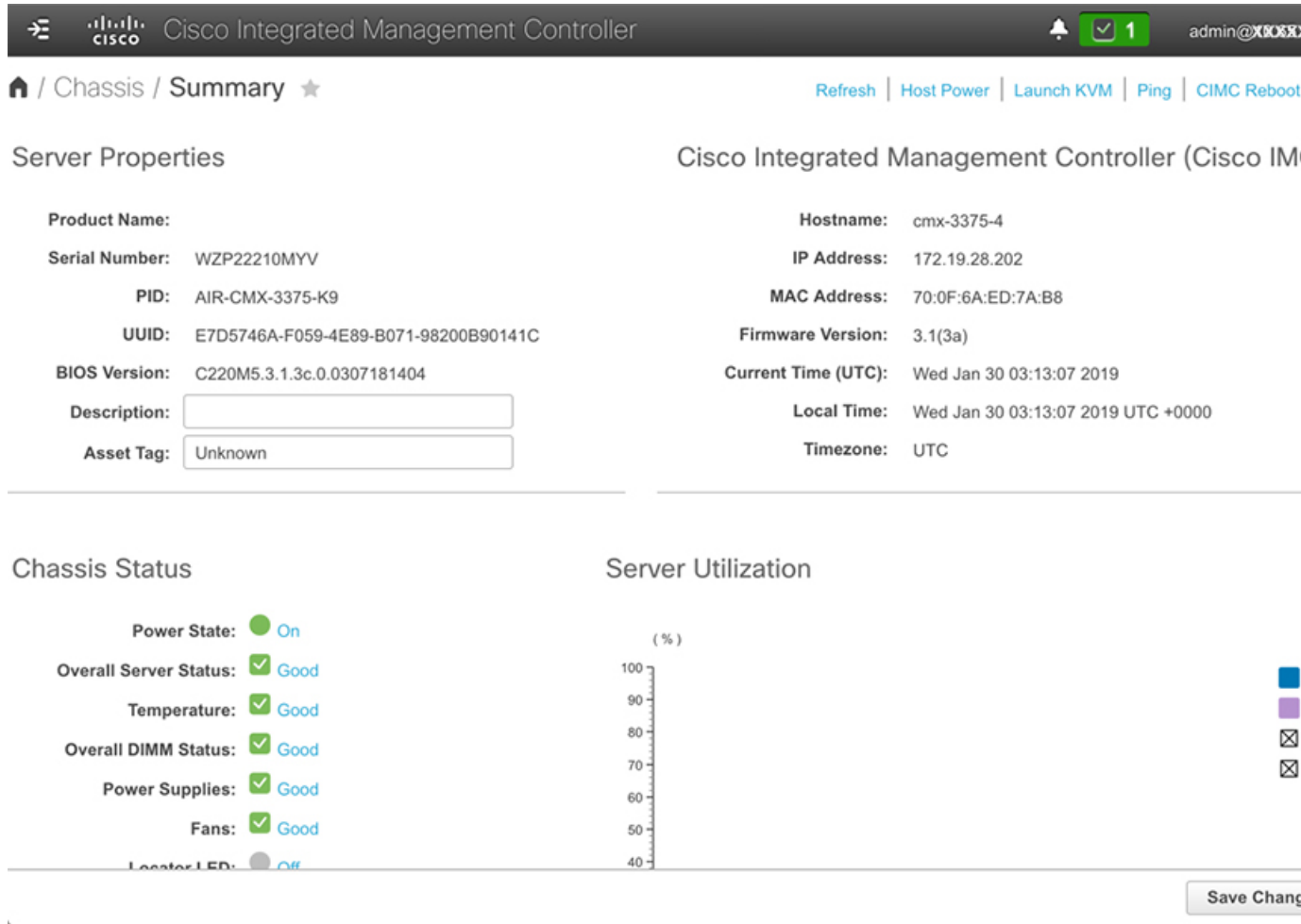
Before you begin

Java Version 1.6.0.14 must be installed on the client machine used to access your MSE 3365 device.

Step 1 Download the Cisco MSE ISO image from the [Download Software](#) page on cisco.com.

Step 2 Open a browser, and enter the IP address of your device to log in to the Cisco Integrated Management Controller (CIMC) GUI interface (Address format is https://x.x.x.x).

Figure 6: Cisco Integrated Management Controller Interface



Step 3 Click **Server** and in the **Server Summary** page, click **Launch KVM Console** and click **OK**. A mini executable file is downloaded.

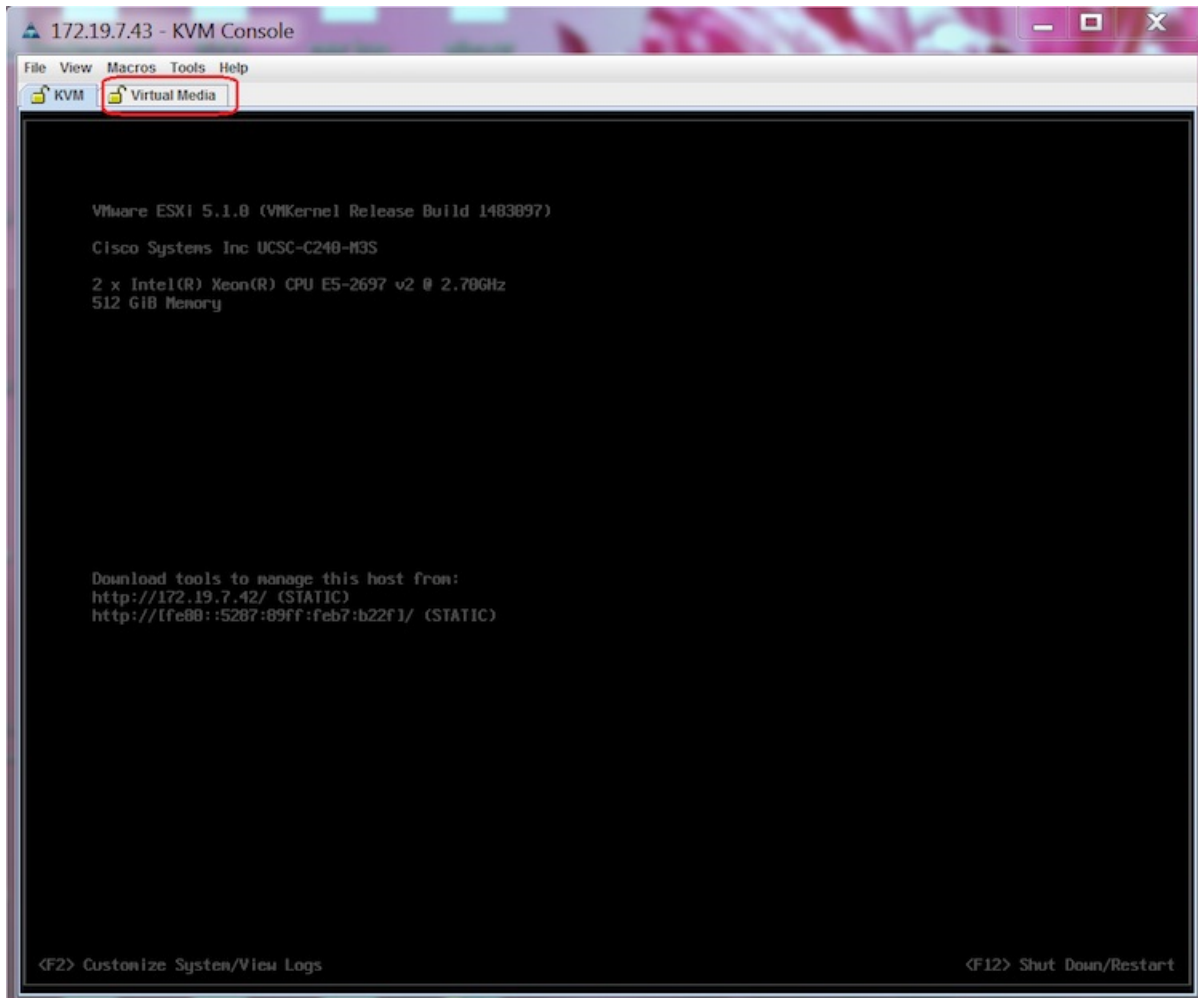
Step 4 Open the file using javaws.exe from the bin folder of your Java installation. If a security error prevents you from installing the file, add the URL of the CIMC to the list of exception sites, using the steps below.

- Choose **Control Panel > Programs > Java**.
- Choose **Security > Edit Site List > Add** and add the CIMC URL.
- Click **OK**.

The installation is initiated.

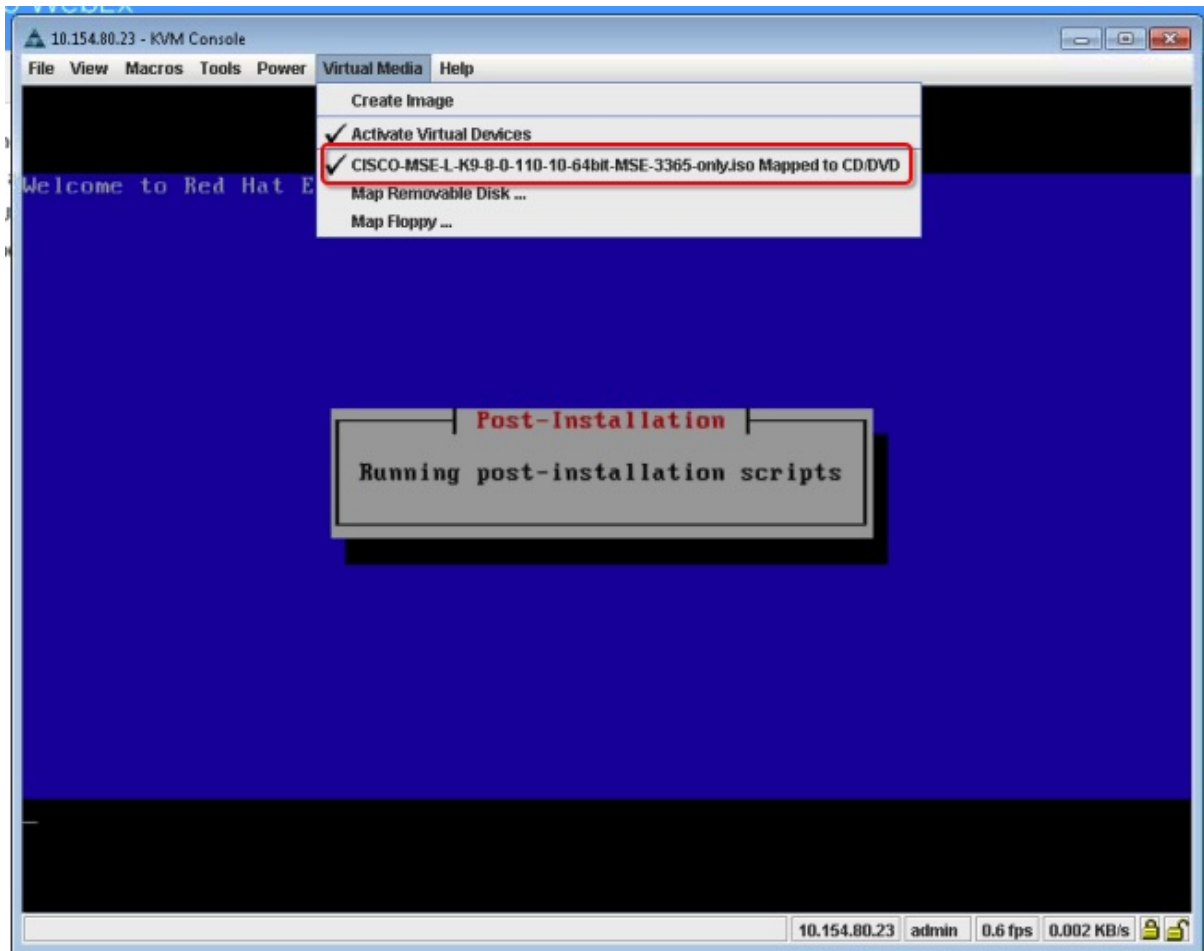
Step 5 In the KVM Console window that is displayed after the installation, click the **Virtual Media** tab.

Figure 7: KVM Console



Step 6 In the **Virtual Media** window that is displayed, choose **Activate Virtual Devices > Select "Map CD/DVD**. Browse and select the downloaded MSE image.

Figure 8: ISO Image Selected



The recovery process begins. The **Select Install Method** window is displayed.

Step 7 In the **Select Install Method** window that is displayed, choose any of the following options:

- Option 1: **Install CMX using Serial**—Respond to the prompt to press ENTER by starting an SSH session to the CIMC interface, as the KVM console does not permit you to press ENTER (With CSCuW32543). Use the following commands to initiate the SSH session:

```
ssh <cimc-ip-address>
connect host
```

You can see that the image is being copied from CDROM. The process can take up to forty-five minutes to copy.

Figure 9: Copying from CDROM

```

10.154.80.23 - PuTTY
Board Product Name      : UCSC-C220-M4S
Board Part Number       : 74-12419-01
Board Serial            : FCH19437X8F
FRU File ID             : C220
Part Number Revision    : A0
FAB Version             : 5
VID                     : V01

Product Manufacturer    : Cisco Systems Inc
Product Name            : AIR-MSE-3365-K9
Product Part/Model Number : 74-12502-01
Product Version         : A0
Product Serial          : FCH1944V269
FRU File ID             : C220M4S
Part Number Revision    : D0
VID                     : V01

Success in setting for FRU ID 2

UDI PID update complete
"Edit grub.conf"
"Root drive is UUID=99a9fe4b-bdc1-4a8a-b1ab-a449a519343c UUID=99a9fe4b-bdc1-4a8a-b1ab-a449a519343c"
Check tmpfs partition before installation
tmpfs          32G    0  32G   0% /dev/shm
Set host name with hostname command
Restarting network services after setting hostname
The hostname is: mse-3365.cisco.com
Add dummy address in /etc/hosts file
Check /etc/hosts file
127.0.0.1    localhost localhost.localdomain localhost4 localhost4.localdomain4
::1         localhost localhost.localdomain localhost6 localhost6.localdomain6
192.168.253.1 mse-3365 mse-3365.cisco.com
Copying CISCO-MSE-L-K9-8-0-110-10-64bit.bin.tar.gz from the CDROM. Thu Jan  7 13:51:34 PST 2016

```

Figure 10: Copying Database Files from CDROM

```

10.154.80.23 - PuTTY
Board Serial            : FCH19437X8F
FRU File ID             : C220
Part Number Revision    : A0
FAB Version             : 5
VID                     : V01

Product Manufacturer    : Cisco Systems Inc
Product Name            : AIR-MSE-3365-K9
Product Part/Model Number : 74-12502-01
Product Version         : A0
Product Serial          : FCH1944V269
FRU File ID             : C220M4S
Part Number Revision    : D0
VID                     : V01

Success in setting for FRU ID 2

UDI PID update complete
"Edit grub.conf"
"Root drive is UUID=99a9fe4b-bdc1-4a8a-b1ab-a449a519343c UUID=99a9fe4b-bdc1-4a8a-b1ab-a449a519343c"
Check tmpfs partition before installation
tmpfs          32G    0  32G   0% /dev/shm
Set host name with hostname command
Restarting network services after setting hostname
The hostname is: mse-3365.cisco.com
Add dummy address in /etc/hosts file
Check /etc/hosts file
127.0.0.1    localhost localhost.localdomain localhost4 localhost4.localdomain4
::1         localhost localhost.localdomain localhost6 localhost6.localdomain6
192.168.253.1 mse-3365 mse-3365.cisco.com
Copying CISCO-MSE-L-K9-8-0-110-10-64bit.bin.tar.gz from the CDROM. Thu Jan  7 13:51:34 PST 2016

Copying database files from the CDROM. Thu Jan  7 14:09:19 PST 2016

```

- Option 2: **Install CMX using current console**—The recovery process is initiated using the current console.

Step 8 Once the image is copied, a silent installation is initiated.

Figure 11: Preparing SILENT Mode Installation

```

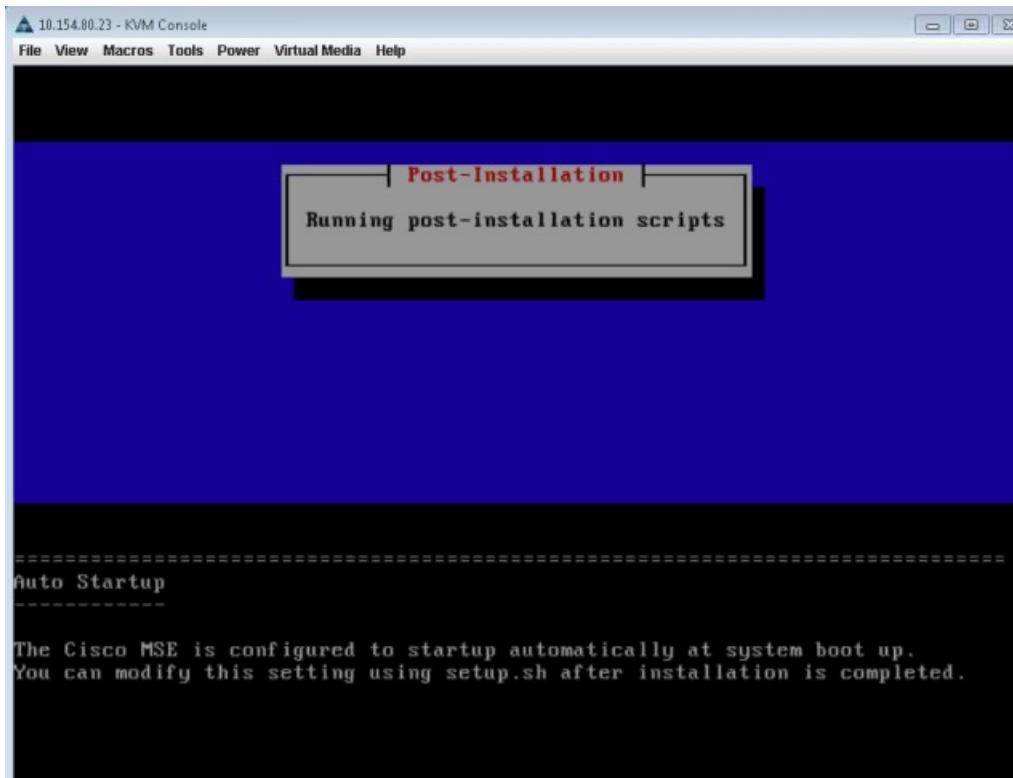
Extracting the JRE from the installer archive...
Unpacking the JRE...
Extracting the installation resources from the installer archive...
Configuring the installer for this system's environment...
Launching installer...
Preparing SILENT Mode Installation...
=====
Cisco Mobility Services Engine      (created with InstallAnywhere by Macrovision)
=====
Command.run(): process completed before monitors could start.

Installing...
-----
[=====|=====|=====|=====]
[-----|-----|-----|-----]
-----
Database Installation
-----
The installer will now install the database. This may take a long time
(up to 30 minutes). Do not cancel the installer during this step.

Installing Database files

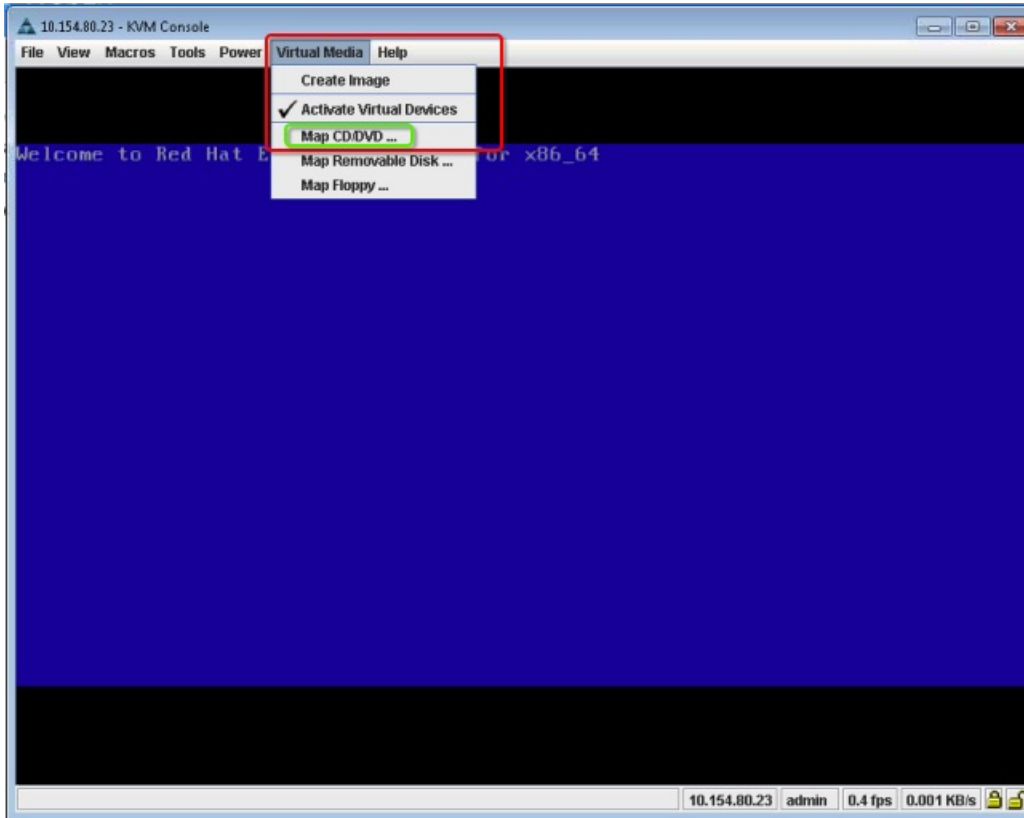
Step 1/3 - Installing Database files
[=====] [ ] 25%
    
```

Figure 12: Running Post-Installation Scripts



Step 9 The device boots up with the newly loaded image. The CD/DVD mapping is automatically unchecked. In case it is checked, uncheck the **Activate Virtual Devices** option, so that the BIOS setting is checked for the image copied on the HDD every time it reboots.

Figure 13: Map CD/DVD



What to do next

For more information about configuring Cisco CMX, see [Configuring Cisco CMX Release 10.5.x and Later](#).

Uploading the Cisco CMX/MSE ISO Image to the Cisco MSE 3365 Using Older CIMC Versions

MSE 3365 Software Reset is a process used to load the MSE 3365 with a required image (MSE 8.x, or CMX 10.x). The MSE 3365 is a UCS-based device, and can be accessed through the Cisco Integrated Management Controller (CIMC) interface.

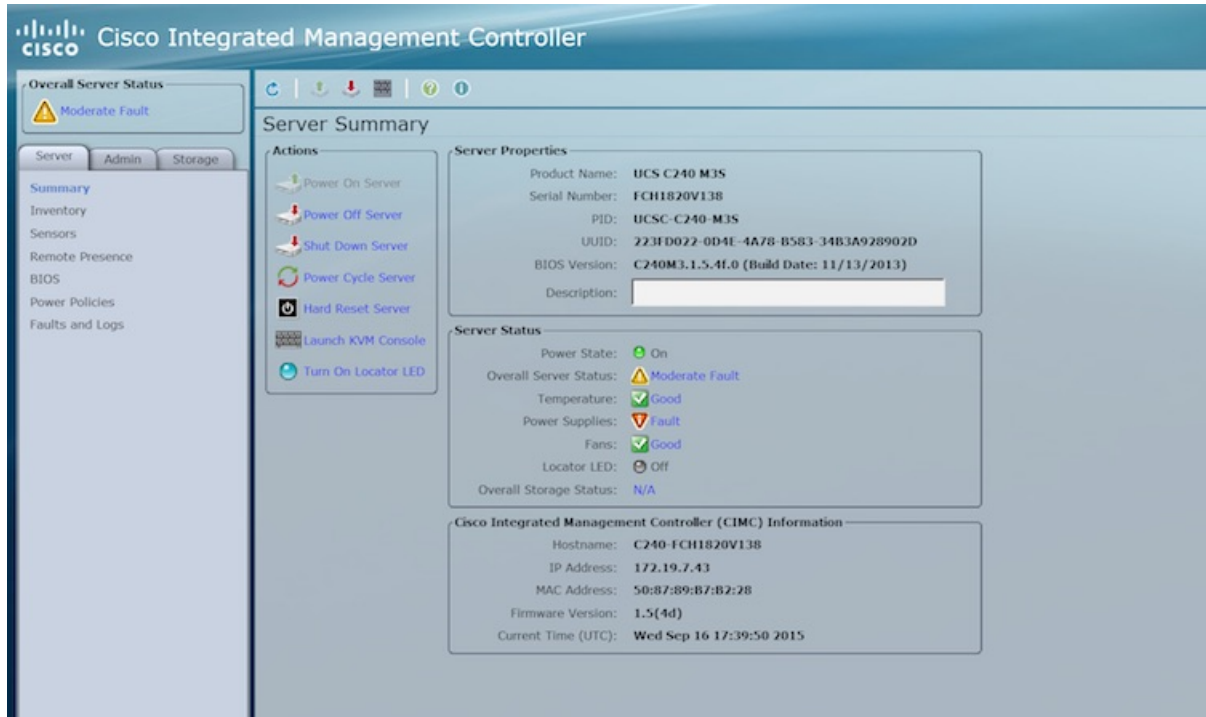
Before you begin

Java Version 1.6.0.14 must be installed on the client machine used to access your MSE 3365 device.

Step 1 Download the Cisco MSE ISO image from the [Download Software](#) page on cisco.com.

Step 2 Open a browser, and enter the IP address of your device to log in to the Cisco Integrated Management Controller (CIMC) GUI interface (Address format is https://x.x.x.x).

Figure 14: Cisco Integrated Management Controller Interface



Step 3 Click **Server** and in the **Server Summary** page, click **Launch KVM Console** and click **OK**. A mini executable file is downloaded.

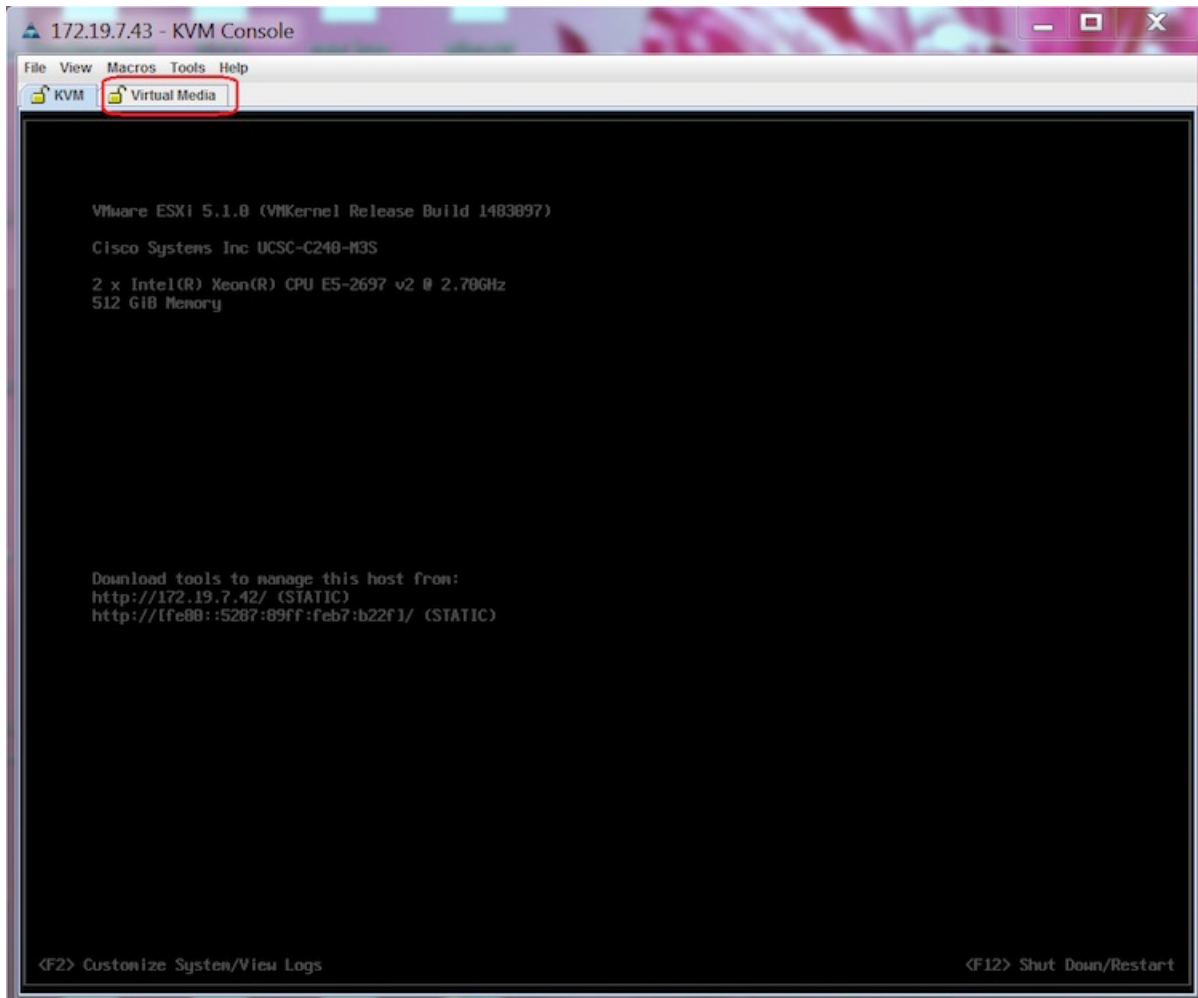
Step 4 Open the file using javaws.exe from the bin folder of your Java installation. If a security error prevents you from installing the file, add the URL of the CIMC to the list of exception sites, using the steps below.

- a) Choose **Control Panel > Programs > Java**.
- b) Choose **Security > Edit Site List > Add** and add the CIMC URL.
- c) Click **OK**.

The installation is initiated.

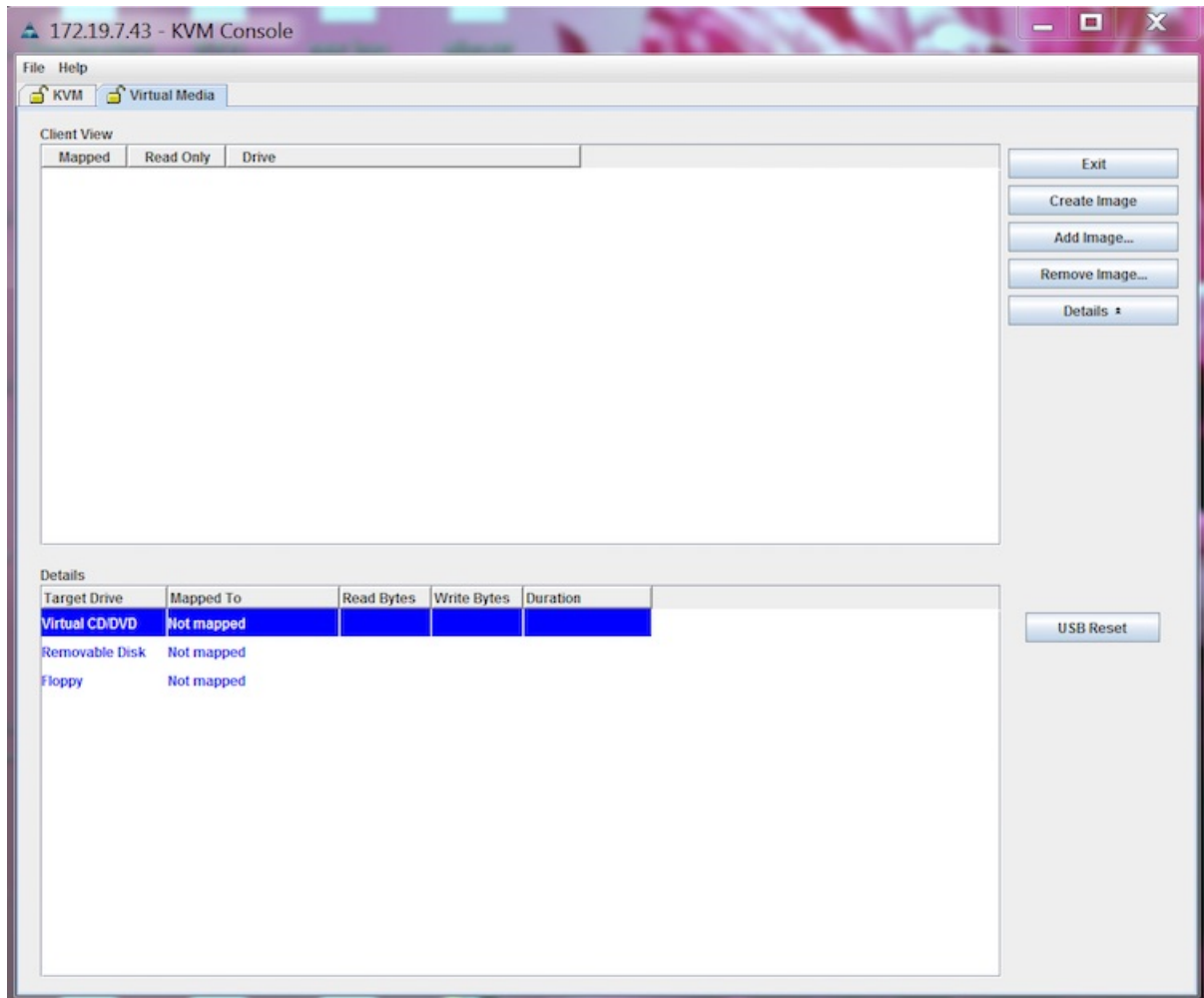
Step 5 In the KVM Console window that is displayed after the installation, click the **Virtual Media** tab.

Figure 15: KVM Console



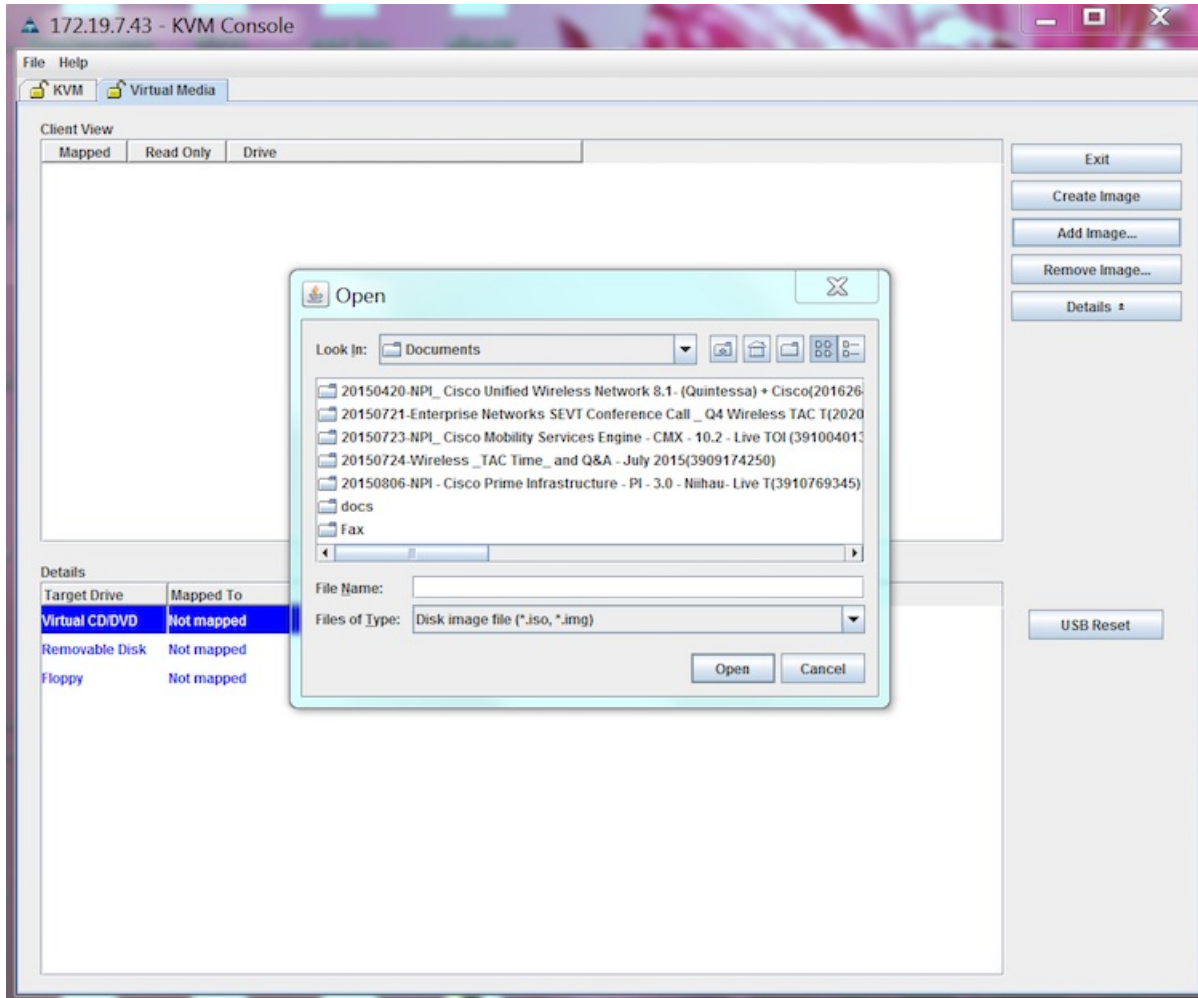
Step 6 In the **Virtual Media** window that is displayed, click **Add Image**.

Figure 16: Virtual Media



Step 7 Browse and select the downloaded MSE image and click **Open**.

Figure 17: Select Downloaded Cisco MSE ISO Image



The recovery process begins.

Step 8

During the recovery process, respond to the prompt to press ENTER by starting an SSH session to the CIMC interface, as the KVM console does not permit you to press ENTER (With CSCuw32543). Use the following commands to initiate the SSH session:

```
ssh <cimc-ip-address>
connect host
```

The device boots up with the newly loaded image.

What to do next

For more information about configuring Cisco CMX, see [Configuring Cisco CMX Release 10.5.x and Later](#).