



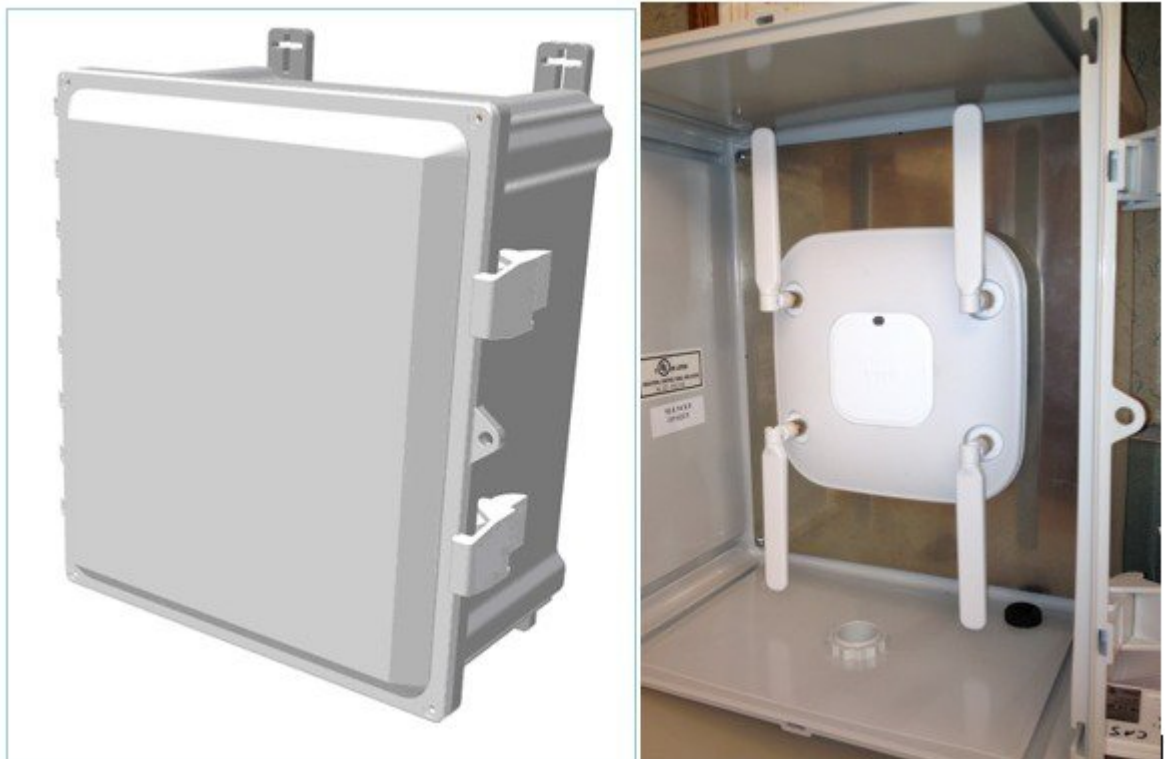
Stadium and Harsh Environments

Customers wishing to install the AP in harsh environments where it may be exposed to weather, such as stadiums, sporting areas, open garden areas or warehouse freezers, may wish to use a NEMA type enclosure.

**Note**

Some access points may not be certified for outdoor deployments in a NEMA enclosure. This varies around the world; for example, some regulatory agencies permit AP outdoor NEMA enclosures if the AP is indoors, such as a freezer or garden area, but may prohibit its use outdoors. This seems to vary with regard to weather radar compliance and often UNII-1 compliance. Check with your Cisco account team or the communications regulatory agency that has jurisdiction in your part of the world.

Figure 1: Example of NEMA Enclosure with pressure vent on bottom



Third-party sources for NEMA type enclosures include:

<http://www.oberonwireless.com/>

<http://www.sparcotech.com/>

<http://www.terra-wave.com/>

When using a NEMA type enclosure, try to have the cables exit out of the bottom of the enclosure so that rain and moisture do not run down the cable into the enclosure. Also, the color of the enclosure may affect the heat rating; for example, a black enclosure gets much hotter in the sun than a white one. You may also want to use a pressure vent to prevent moisture accumulation.