



Tools

- [Real Time Monitoring Tool, on page 1](#)
- [Disaster Recovery System, on page 32](#)
- [Network Management, on page 38](#)

Real Time Monitoring Tool

For Cisco Unified Intelligence Center, Live Data, and Cisco Identity Service (Cisco IdS), download the Real Time Monitoring Tool (RTMT) from the Cisco Unified Intelligence Center Administration page (**Tools > RTMT Plugin Download**).

Live Data and the Cisco IdS do not host the RTMT installer. For this reason, always connect to the Cisco Unified Intelligence Center Server and sign in to the Administration page to download the RTMT installer. You can, however, run the same RTMT client to connect to any of the Cisco Unified Intelligence Center, Live Data, or Cisco IdS servers (standalone or coresident).

RTMT runs as a client-side application. You can install RTMT on a Windows workstation or a Linux machine. RTMT is cluster-aware. RTMT provides critical service and performance monitoring (perfmon), trace/log collection and viewing, and Alert Management on the node for the IP address you request at launch. RTMT does not provide the status of all critical applications on all the nodes at the same time.

Use RTMT to:

- Monitor the health of the system by generating email alerts for objects whose values go above or below a threshold
- Collect and view traces
- View syslog messages
- Monitor performance counters

RTMT has extensive online help. Refer to it for information on alerts, schedule collection, performance monitoring, and collecting and downloading tracing and logging data.

Launch RTMT

Procedure

Step 1 In the left navigation pane, choose **Tools** and then click **RTMT Plugin Download**.

Step 2 In the **RTMT Plugin** dialog box:

- a) Select the **Windows** platform.
- b) Click **Download**.
- c) Run the file or save the **CuicServRtmtPlugin** executable file and then run it from the saved location.
- d) Follow the prompts and click the buttons on the installation screens.

Step 3 To launch:

- a) Launch RTMT from the desktop icon.

Figure 1: RTMT Desktop Icon



- b) In the **Host IP Address** field, enter the IP address for the node you want to monitor.
 - c) Accept the default port (8443).
 - d) Check **Secure Connection**. You see an error if the Host IP Address is not found or there is no network connection.
 - e) Click **Yes** to accept the certificate.
 - f) Enter the **User Name** and **Password** for a Super User. (Only a Super User can install RTMT.)
 - g) Click **OK** to accept the default configuration.
-

RTMT Client Support Services

RTMT uses the following services/servlets:

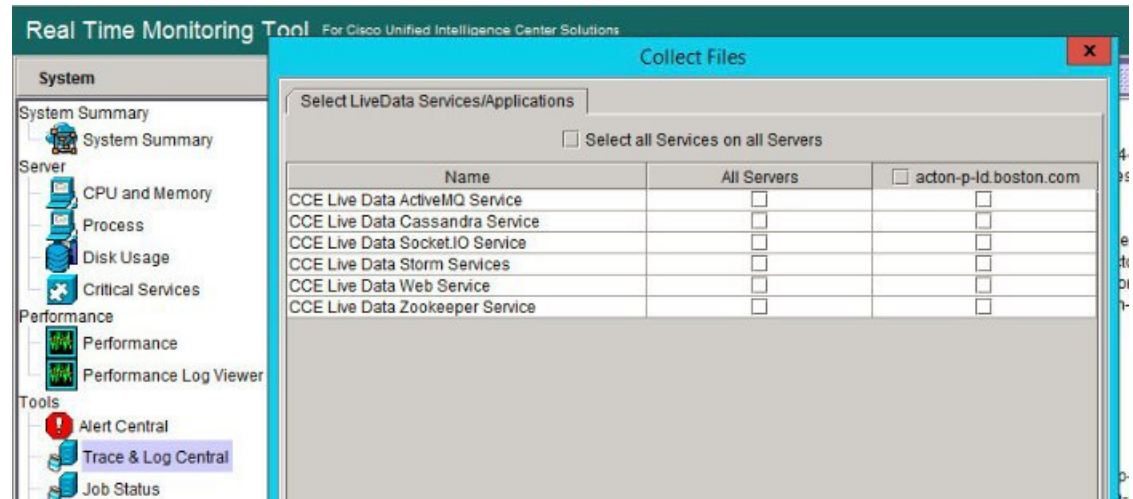
- Cisco AMC service
- Cisco CallManager Serviceability RTMT
- Cisco RIS Data Collector
- Cisco Tomcat Stats Servlet
- Cisco Trace Collection Service
- Cisco Log Partition Monitoring Tool
- Cisco SOAP-Real_Time Service APIs
- Cisco-SOAP-Performance Monitoring APIs
- Cisco RTMT Reporter Servlet

RTMT Integration

Tracing and Logging

To expose tracing and logging information go to RTMT **Tools** > **Trace & Log Central** . The RTMT tool gives you the ability to browse through a trace file and supports on-demand or scheduled downloading of the file.

Figure 2: RTMT TraceLog for Live Data



Critical Services

To expose service information go to RTMT **Server** > **Critical Services**.

Figure 3: RTMT Critical Services



Alerts

To expose Alert Central go to RTMT **Tools** > **Alert Central** .

Figure 4: RTMT Alerts

Alert Name	Enabled	In Safe Range	Alert Action	Last Alert Ra
AuthenticationFailed	Enabled	Yes	Default	N/A
CiscoDRFFailure	Enabled	N/A	Default	N/A
CoreDumpFileFound	Enabled	N/A	Default	N/A
CpuPegging	Enabled	Yes	Default	N/A
CriticalServiceDown	Enabled	No	Default	04:06:28 PM 04/2
DBChangeNotifyFailure	Enabled	Yes	Default	N/A
DBReplicationFailure	Enabled	Yes	Default	N/A
DBReplicationTableOutOfSync	Enabled	N/A	Default	N/A
HardwareFailure	Enabled	N/A	Default	N/A
LogFileSearchStringFound	Enabled	N/A	Default	N/A
LogPartitionHighWaterMarkExceeded	Enabled	N/A	Default	N/A
LogPartitionLowWaterMarkExceeded	Enabled	N/A	Default	N/A
LowActivePartitionAvailableDiskSpace	Enabled	Yes	Default	N/A
LowAvailableVirtualMemory	Enabled	Yes	Default	N/A
LowInactivePartitionAvailableDiskSpace	Enabled	Yes	Default	N/A
LowSwapPartitionAvailableDiskSpace	Enabled	Yes	Default	N/A

Perfmon and Statistics

To expose perfmon information and statistics go to the RTMTTools > Alert Central.

Figure 5: RTMT Performance Interface

- acton-p-Id
 - Cisco LDAP Directory
 - Cisco Tomcat Connector
 - Cisco Tomcat JVM
 - Cisco Tomcat Web Application
 - DB Change Notification Client
 - DB Change Notification Server
 - DB Change Notification Subscriptions
 - DB Local_DSN
 - DB User Host Information Counters
 - DBPerformanceInfo
 - Enterprise Replication DBSpace Monitors
 - Enterprise Replication Perfmon Counters
 - Intelligence Center General Information section
 - Intelligence Center JVM Statistics
 - Intelligence Center License Information section
 - Intelligence Center System Condition Table

The RTMT Interface

The following RTMT system monitoring objects are available in the left pane of the RTMT page:

- **System Summary**

Displays information on Virtual Memory usage, CPU usage, Common Partition usage, and the alert history log.

- **Server**

Server objects are:

- **CPU and Memory** - Displays information on Virtual memory usage and CPU usage for the server.
- **Process** - Displays information on the processes running on the server.
- **Disk Usage** - Displays information on the disk usage on the server.
- **Critical Services** - Displays the name of the critical service, the status (whether the service is up, down, activated, stopped by the administrator, starting, stopping, or in an unknown state), and the elapsed time during which the services have existed in a particular state for the server or for a particular server in a cluster (if applicable).

The Cisco Unified Intelligence Center services are listed under the **Intelligence Center** tab. The Live Data and Cisco IdS services are listed, along with the System services, under the **System** tab.

- **Performance**

Performance objects are:

- **Performance** - Performance monitoring allows you to monitor performance counters related to the Unified Intelligence Center server. You can continuously monitor a set of preconfigured objects and receive notification in the form of an email message. You can associate counter threshold settings to alter notification. Up to six perfmon counters in one chart for performance comparisons can be displayed. Performance queries can be used to add a counter to monitor. You can also save and restore settings, such as counters being monitored, threshold settings, and alert notifications, for customized troubleshooting tasks.
- **Performance Log Viewer** - Displays data for counters from perfmon CSV log files in a graphical format.

- **Tools**

Tools objects are:

- **Alert Central** - Displays the history and status of every alert in the system. Click the **Intelligence Center** tab to see Unified Intelligence Center alerts, including those related to Cisco IdS.
- **Trace & Log Central** - Allows you to browse or download trace and log files for a specific date range or absolute time.
- **Job Status** - Shows the status of trace collection events.
- **Syslog Viewer** - Allows you to view (by node) the system, application, and security logs.
- **VLT** - Not applicable.
- **AuditLog Viewer** - Allows you to view system audit logs.

Related Topics

[Cisco Unified Intelligence Center Counters](#), on page 8

Cisco Unified Intelligence Center Services

- **Intelligence Center Perfmon Service**—Performance data collection process, which persists counters relating to Unified Intelligence Center report execution and live data statistics from Unified Intelligence Center, Socket.IO, and CCE Live Data ActiveMQ Service process, which will be helpful in debugging performance issues.

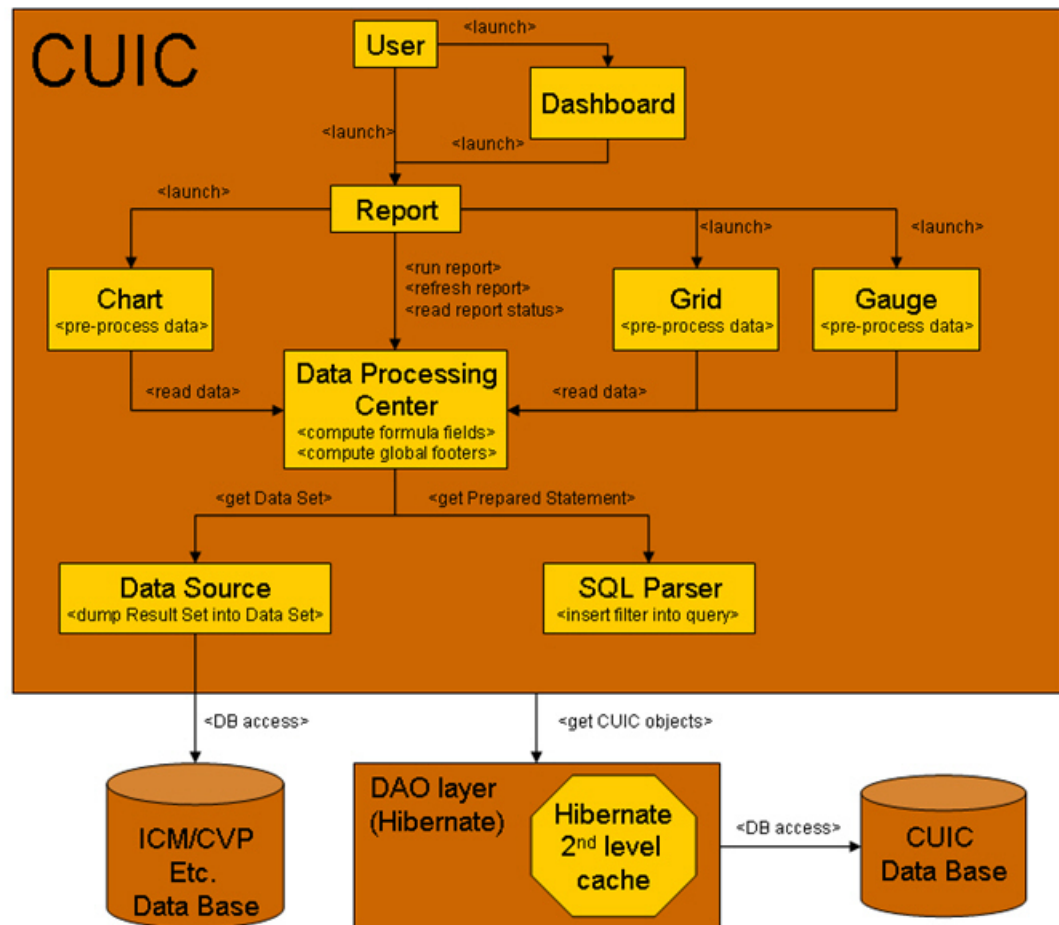
- **Intelligence Center Reporting Service**— Core service for the Unified Intelligence Center reporting functionality.
- **Intelligence Center SNMP Java Adapter Service**—SNMP service that interfaces between JMX counters and the SNMP Primary Agent.
- **Intelligence Center Serviceability Service**— Services that exposes RTMT counters from the Unified Intelligence Center server.

Unified IC performance objects and counters

Unified Intelligence Center performance *objects* are named for system components that generate data. Each performance object provides performance *counters* that represent data specific to that object. The Unified Intelligence Center Reporting object has counters for the number of reports that are running and the number of reports that have failed. The counters for each object display when the folder expands.

Reporting Counters. The following diagram illustrates the runtime interactions and the relationship among the components involved on the execution of a report. The diagram provides a simple structure that defines the reporting engine performance counters.

Figure 6: Report Execution



When the data for the report is available, the Data Processing Center computes the formula fields and global report footers. The gauge, grid, and chart managers in the engine pre-process the data to generate subsets of information that will be consumed by their corresponding peer components on the User Interface. The diagram shows which processes have a high cost of execution and the importance of closely monitoring the operations performed by charts, grids, data processing center, the data sources, and so forth. Monitor these components to track the behavior of each component and its total contribution to the cost of executing a report.

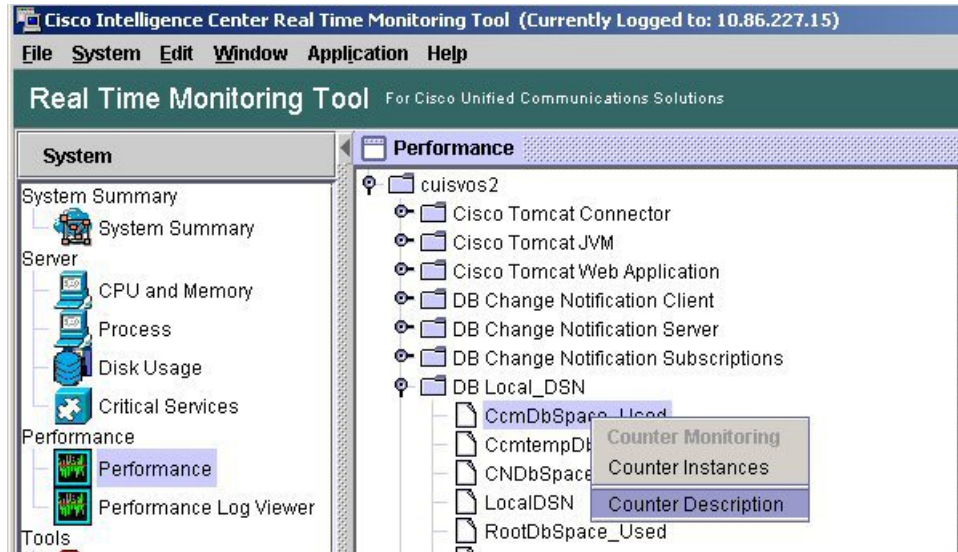
Aggregating the costs of all components provides a holistic view of the system performance. Keeping counters at the component level allows the system and application administrator to drill down into the details to determine what each component is doing and to perform any necessary corrective actions that.

This section lists all the performance objects monitored for Unified Intelligence Center and explains the counters for each.



Note Online help is available for each counter. Right-click the counter and select **Counter Description**.

Figure 7: RTMT Counter Help



For information on the objects and counters that are kept for the operating system, refer to the RTMT online help.

Intelligence Center Perfmon Service

Logs the performance counters from the critical processes in the system related to the Live Data Reporting services. This service collects data from the following services if they are up and running:

- Intelligence Center Reporting Service
- CCE Live Data ActiveMQ Service

Performance counter values are stored to the logs in the directory: `/opt/cisco/cuic/logs/perfmon`. The Intelligence Center Perfmon Service is configured to retain approximately 10 days of data at any given time. This service is independent of other services and is not required by other processes in the system.

Cisco Unified Intelligence Center Counters

Counters:

CUIC Tomcat Connector

The Tomcat Connector object provides information about Tomcat secure Hypertext Transport Protocol (HTTP) connectors. A Tomcat Connector represents an endpoint that receives requests and sends responses.

The Connector handles HTTP requests and sends HTTP responses that occur when Cisco Unified Intelligence Center web pages are accessed.

Counter	Description
Errors	The total number of HTTP errors (for example, 401 Unauthorized) encountered by the Connector.

Counter	Description
MBytes Received	The total number of data received by the Connector.
MBytes Sent	The total number of data that the Connector has sent.
Requests	The total number of requests that have been handled by the Connector.
ThreadsBusy	The Connector's current number of busy/in-use request processing threads.
ThreadsMax	The Connector's maximum number of request processing threads.
ThreadsTotal	The Connector's current total number of request processing threads, including available and in-use threads.

CUIC Tomcat JVM

The Tomcat Java Virtual Machine (JVM) object provides information about the Tomcat JVM, which represents, among other things, a pool of common resource memory used by Unified Intelligence Center.

Counter	Description
KBytesMemoryFree	The amount of free dynamic memory block (heap memory) in the Tomcat Java Virtual Machine. The dynamic memory block stores all objects created by Tomcat and its web applications such as Unified Intelligence Center. When the amount of free dynamic memory is low, more memory is automatically allocated and total memory size (represented by the KbytesMemoryTotal counter) increases up to the maximum (represented by the KbytesMemoryMax counter). You can determine the amount of memory in use by subtracting KBytesMemoryFree from KbytesMemoryTotal.
MemoryMax	The maximum dynamic memory block size for the Unified Intelligence Center Tomcat Java Virtual Machine.
MemoryTotal	This current total dynamic memory block size - including free and in-use memory - for the Tomcat Java Virtual Machine.

CUIC Tomcat Web Application

The Tomcat Web Application object provides information about running Cisco Unified Intelligence Center. The instance name for each Tomcat Web Application is based on the URL for the web application.

Counter	Description
Errors	The total number of HTTP errors (for example, 401 Unauthorized) encountered by a Cisco Unified Intelligence Center related web application.
Requests	The total number of requests handled by the web application. Each time a web application is accessed, its Requests counter increments accordingly.

Counter	Description
Sessions Active	The number of currently active (in use) sessions the web application currently has.

DB Change Notification Client

Counter	Description
MessagesProcessed	The number of database change notifications that have been processed. This counter refreshes every 15 seconds by default.
MessagesProcessing	The number of change notification messages in the change notification queue for this client that are currently being processed or are waiting to be processed. This counter refreshes every 15 seconds by default.
QueueHeadCounter	The head pointer of the change notification queue. The head pointer is the starting point in the change notification queue. To determine the number of notifications in the queue, subtract the head pointer value from the tail pointer value. This counter refreshes every 15 seconds by default.
QueueMax	The largest number of change notification messages to be processed for this client. This counter is cumulative since the last restart of the Cisco Database Layer Monitor service.
QueueTailPointer	The tail pointer of change notification queue. The tail pointer represents the ending point in the change notification queue. To determine the number of notifications in the queue, subtract the head pointer value from the tail pointer value. This counter refreshes every 15 seconds by default.
TablesSubscribed	The number of tables to which this client has subscribed.

DB Change Notification Server

Counter	Description
Clients	The total number of change notification clients.
CNProcessed	The total number of change notification messages processed by server since reboot.
QueueDelay	The number of seconds that the change notification process has messages to process, but is not processing them. This condition is true if either Change Notification Requests Queued in Database (QueuedRequestsInDB) and Change Notification Requests Queued in Memory (QueuedRequestsInMemory) are non-zero or if the Latest Change Notification Messages Processed count is not changing. This condition is checked every 15 seconds.
QueuedRequestsInDB	The number of records from DBCNQueue table.

Counter	Description
QueuedRequestsInMemory	The number of change notification requests queued in memory.

DB Change Notification Subscriptions

Counter	Description
SubscribedTable	The table(s) for which the service or servlet will receive change notifications. This information is provided for informational purposes only; no counter will increment.

DB Local DSN

Counter	Description
CcmDbSpace_Used	The amount of ccm dbspace consumed.
CcmtempDbSpace_Used	The amount of ccmtemp dbspace consumed.
CNDbSpace_Used	The percentage of CN dbspace consumed.
Local DSN	The data source name (DSN) that is being referenced from the local machine.
RootDBSpaceUsed	The amount of root dbspace consumed.
SharedMemory_Free	Total shared memory that is free.
SharedMemory_Used	Total shared memory that is used.

DB User Host Information Counters

Counter	Description
DB:User:Host Instances	The number of connections that are present for each instance of DB:User:Host.

DBPerformance Info

Counter	Description
CuicDbSpace_Used	The amount of Unified Intelligence Center dbspace consumed.
CuicSbSpace_Used	The amount of Unified Intelligence Center Blob Space consumed.
CuicTempDbSpace_Used	The amount of Unified Intelligence Center Temp dbspace consumed.
RootDbSpace_Used	The amount of root dbspace consumed.

Enterprise Replication DBSpace Monitors

Counter	Description
ERDbSpace_Used	The amount of enterprise replication DbSpace consumed.
ERSBDbSpace_Used	The amount of ERDbSpace consumed.

Enterprise Replication Perfmon Counters

Counter	Description
ReplicationQueueDepth	Displays the replication queue depth.

Intelligence Center General Information Section

Counter	Description
DeviceType	The number id of the device type.
GlobalStatisticInterval	Size in milliseconds of the global statistics interval.
InetAddressType	The type of the ip address of the device, either IPv4 or IPv6.
TimeZoneOffsetHours	The hours component of the offset of the default configured time zone.
TimeZoneOffsetMinutes	The minutes component of the offset of the default configured time zone.
Uptime (sec)	Null.

Intelligence Center JVM Statistics

Counter	Description
EnvMaxThreadsUsed	The real-time maximum threads used object is a real-time snapshot metric indicating the peak amount of threads used simultaneously in the runtime environment since startup. The maximum number of threads used by the runtime environment includes all Unified Intelligence Center standalone and thread pool threads as well as threads created by the web application server running within the same runtime environment.
EnvRtCommitMemUsed	The real-time current memory used object is a real-time snapshot metric indicating the memory committed by the runtime environment. This memory is guaranteed to be available to the runtime environment. This can change dynamically over time but is never less than EnvRtCurrMemUsed. The object value is expressed as a count of megabytes.

Counter	Description
EnvRtCurrMemAvail	The real-time current memory available object is a real-time snapshot metric indicating the amount of system memory not being used. The object value is expressed as a count of Mega bytes and indicates the amount of current system memory that is not currently being used.
EnvRtCurrMemUsed	The real-time current memory used object is a real-time snapshot metric indicating the current memory usage by the runtime environment. The object value is expressed as a count of Mega bytes and indicates the current amount of memory used by this runtime environment.
EnvRtCurrThreadsInUse	The real-time current threads in use object is a real-time snapshot metric indicating a count of threads that are in use in the runtime environment. The number of threads in use by the runtime environment include all of the Unified Intelligence Center standalone and thread pool threads as well as those threads created by the web application server running within the same runtime environment.
EnvRtMaxMemAvail	The real-time maximum memory available object is a real-time snapshot metric indicating the maximum amount of System memory available. The object value is expressed as a count of megabytes.
EnvRtMaxMemUsed	The real-time maximum memory used object is a real-time snapshot metric indicating the peak memory allocated to the runtime environment. The object value is expressed as a count of megabytes and indicates the high water mark of memory that can be used by the runtime environment.
EnvRtUpTime	The real-time up time object is a real-time snapshot metric indicating how long the Unified Intelligence Center application has been running. The object value is expressed as a count of milliseconds that have elapsed since the application began executing.

Intelligence Center System Condition Table

Counter	Description
CUIC_DATASOURCE_UNAVAILABLE	This counter is no longer valid with the counter value -1. It has been rendered obsolete by the Await Write Time counter.
CUIC_DB_REPLICATION_FAILED	Database replication failed.
CUIC_REPORT_EXECUTION_FAILED	Could not run the report. Could be because associated data source is offline.

Counter	Description
CUIC_SERVICE_UNAVAILABLE	Service going down.
Infrastructure_DEADLOCK_DETECTED	A deadlock between two or more application threads has been detected. This is an unrecoverable error and the server must be restarted. Detailed information about the deadlock can be found in the logs.
Infrastructure_LOG_PURGER_ERROR	An error occurred while log files were being purged.
Infrastructure_PERSISTENT_STORE_SIZE_ALMOST_FULL	The message store that persists reporting data during a connection loss is approaching capacity. If it fills completely, reporting data will be lost.
Infrastructure_PERSISTENT_STORE_SIZE_FULL	The message store that persists reporting data during a connection loss is at capacity. Reporting data will be lost until the connection with the reporting server is restored.
Infrastructure_PERSISTENT_STORE_SIZE_WARN	The message store that persists reporting data during a connection loss is more than half full. If it fills completely, reporting data will be lost.
Infrastructure_PORT_SECURITY_MANAGER_ERROR_LOADING	Error manipulating PortSecurityManager firewall rules.
Infrastructure_SC_JMX_CONFIGURATION_ERROR	There is a configuration problem with JMX ports.
Infrastructure_SERVER_NOT_READY	The Server state is not ready.
Infrastructure_SNMP_CONNECTION_ERROR	The connection to SNMP Subagent Failed.
Infrastructure_SOFTWARE_CONFIGURATION_ERROR	There is an error in the files configuring the software on the disk.
Infrastructure_SUBSYSTEM_HEARTBEAT_FAILED	Heartbeats from one or more subsystems have stopped.
Infrastructure_SUBSYSTEM_START_FAILURE	One or more subsystems failed to start.
Infrastructure_SUBSYSTEM_STOP_FAILURE	One or more subsystems failed to stop.
Infrastructure_SYSTEM_SHUT_DOWN	One or more subsystems shut down.
RS_CONFIG_UNAVAILABLE	System detected critical error accessing configuration.
RS_DATABASE_UNAVAILABLE	System detected critical error with database.
RS_MAINTENANCE_IN_PROGRESS	System has detected maintenance in progress on Reporting Server.

Counter	Description
RS_SYSTEM_THRESHOLD_REACHED	System has detected a critical system threshold reached on Reporting Server.
RS_UNRECOVERABLE_ERROR	System has detected an internal error within Reporting Server which may prevent it from functioning correctly. Restart may be required.

Intelligence Center Thread Pool Section

Counter	Description
Active Thread Count	Number of threads currently executing a task.
Core Pool Size	Minimum number of threads the thread pool is configured to have.
Largest Pool Size	The largest number of threads that have ever simultaneously been in the pool.
Maximum Pool Size	Maximum number of threads to which the thread pool can grow.
Pool Size	Number of currently available threads. Calculated from (total pool size) - (number of active threads)
Task Queue Size	The number of tasks currently queued for execution waiting for a thread.

Intelligence Center Tomcat Connector - HTTPS

The Unified Intelligence Tomcat Connector object provides information about a secure Hypertext Transport Protocol (HTTPS) Tomcat connector. A Tomcat Connector represents an endpoint that receives requests and sends responses.

The Connector handles HTTPS requests and sends HTTPS responses that occur when Cisco Unified Intelligence Center web pages are accessed. There is an instance of this object based on the Secure Sockets Layer (SSL) status of the URLs for web applications: **http-8444** for SSL (HTTPS) connections.

Counter	Description
Errors	The total number of errors (for example, 401 Unauthorized) encountered by the Connector.
MBytes Received	The total number of data received by the Connector.
MBytes Sent	The total number of data that the Connector has sent.
Requests	The total number of requests that have been handled by the Connector.
ThreadsBusy	The Connector's current number of busy/in-use request processing threads.
ThreadsMax	The Connector's maximum number of request processing threads.

Counter	Description
ThreadsTotal	The Connector's current total number of request processing threads, including available and in-use threads.

IP

The IP object provides information on the IPv4-related statistics on your system.

Counter	Description
Frag Creates	The number of IP datagrams fragments that have been generated at this entity.
Frag Fails	The number of IP datagrams that were discarded at this entity because the datagrams could not be fragmented, such as datagrams where the Do not Fragment flag was set.
Frag OKs	The number of IP datagrams that were successfully fragmented at this entity.
In Delivers	The number of input datagrams that were delivered to IP user protocols. This includes Internet Control Message Protocol (ICMP).
In Discards	The number of input IP datagrams where no problems were encountered, but which were discarded. Lack of buffer space provides one possible reason. This counter does not include any datagrams that were discarded while awaiting reassembly.
In HdrErrors	The number of input datagrams that were discarded with header errors. This includes bad checksums, version number mismatch, other format errors, time-to-live exceeded, and other errors that were discovered in processing their IP options.
In Receives	The number of input datagrams that were received from all network interfaces. This counter includes datagrams that were received with errors.
In UnknownProtos	The number of locally addressed datagrams that were received successfully but discarded because of an unknown or unsupported protocol.
InOut Requests	The number of incoming IP datagrams that were received and the number of outgoing IP datagrams that were sent.
Out Discards	The number of output IP datagrams that were not transmitted and were discarded. Lack of buffer space provides one possible reason.
Out Requests	The total number of IP datagrams that local IP user-protocols (including ICMP) supply to IP in requests transmission. This counter does not include any datagrams that were counted in ForwDatagrams.

Counter	Description
Reasm Fails	The number of IP reassembly failures that the IP reassembly algorithm detected, including time outs, errors, and so on. This counter does not represent the discarded IP fragments because some algorithms, such as the algorithm in RFC 815, can lose track of the number of fragments because it combines them as they are received.
Reasm OKs	The number of IP datagrams that were successfully reassembled.
Reasm Reqds	The number of IP fragments that were received that required reassembly at this entity.

IP6

The IP6 object, which supports Cisco Unified Communications Manager, provides information on the IPv6-related statistics on your system.

Counter	Description
Frag Creates	The number of IP datagrams fragments that have been generated at this entity.
Frag Fails	The number of IP datagrams that were discarded at this entity because the datagrams could not be fragmented, such as datagrams where the Do not Fragment flag was set.
Frag OKs	The number of IP datagrams that were successfully fragmented at this entity.
In Delivers	The number of input datagrams that were delivered to IP user protocols. This includes Internet Control Message Protocol (ICMP).
In Discards	The number of input IP datagrams where no problems were encountered, but which were discarded. Lack of buffer space provides one possible reason. This counter does not include any datagrams that were discarded while awaiting reassembly.
In HdrErrors	The number of input datagrams that were discarded with header errors. This includes bad checksums, version number mismatch, other format errors, time-to-live exceeded, and other errors that were discovered in processing their IP options.
In Receives	The number of input datagrams that were received from all network interfaces. This counter includes datagrams that were received with errors.
In UnknownProtos	The number of locally addressed datagrams that were received successfully but discarded because of an unknown or unsupported protocol.
InOut Requests	The number of incoming IP datagrams that were received and the number of outgoing IP datagrams that were sent.

Counter	Description
Out Discards	The number of output IP datagrams that were not transmitted and were discarded. Lack of buffer space provides one possible reason.
Out Requests	The total number of IP datagrams that local IP user-protocols (including ICMP) supply to IP in requests transmission. This counter does not include any datagrams that were counted in ForwDatagrams.
Reasm Fails	The number of IP reassembly failures that the IP reassembly algorithm detected, including time outs, errors, and so on. This counter does not represent the discarded IP fragments because some algorithms, such as the algorithm in RFC 815, can lose track of the number of fragments because it combines them as they are received.
Reasm OKs	The number of IP datagrams that were successfully reassembled.
Reasm Reqds	The number of IP fragments that were received that required reassembly at this entity.

Memory

The memory object provides information about the usage of physical memory and swap memory on the server.

Counter	Description
% Mem Used	Displays the system physical memory utilization as a percentage. The value of this counter equals $(\text{Total KBytes} - \text{Free KBytes} - \text{Buffers KBytes} - \text{Cached KBytes} + \text{Shared KBytes}) / \text{Total KBytes}$, which also corresponds to the $\text{Used KBytes} / \text{Total KBytes}$.
% Page Usage	The percentage of active pages.
% VM Used	The system virtual memory utilization as a percentage. The value of this counter equals $(\text{Total KBytes} - \text{Free KBytes} - \text{Buffers KBytes} - \text{Cached KBytes} + \text{Shared KBytes} + \text{Used Swap KBytes}) / (\text{Total KBytes} + \text{Total Swap KBytes})$, which also corresponds to $\text{Used VM KBytes} / \text{Total VM KBytes}$.
Buffers KBytes	The capacity of buffers in your system in kilobytes.
Cached KBytes	The amount of cached memory in kilobytes.
Free KBytes	The total amount of memory that is available in your system in kilobytes.
Free Swap KBytes	The amount of free swap space that is available in your system in kilobytes.
HighFree	The amount of free memory in the high region. Linux kernel splits the virtual memory address space into memory regions. The high memory is memory above a certain physical address, and its amount depends on the total memory and the type of kernel on the system.

Counter	Description
HighTotal	The total amount of memory in the high region.
LowFree	The free low (non-paged) memory for kernel.
LowTotal	The total low (non-paged) memory for kernel.
PageFaultsPerSec	This represents the number of page faults (major + minor) made by the system per second (post 2.5 kernels only). This is not a count of page faults that generate I/O, because some page faults can be resolved without I/O.
PageMajorFaultsPerSec	This represents the number of major faults the system has made per second, those which have required loading a memory page from disk (post 2.5 kernels only).
Pages	The number of pages that the system paged in from the disk plus the number of pages that the system paged out to the disk.
Pages Input	The total number of pages that the system paged in from the disk.
Pages Input Per Sec	The total number of kilobytes the system paged in from disk per second.
Pages Output	The total number of pages that the system paged out to the disk.
Pages Output Per Sec	This represents the total number of kilobytes the system paged out to disk per second.
Shared KBytes	The amount of shared memory in your system in kilobytes.
SlabCache	This represents all memory used by created slabcaches by various kernel components, as a macroscopic counter representing the sum of all the individual entries in the proc's slab info.
SwapCached	This represents the amount of Swap used as cache memory. Memory that once was swapped out, is swapped back in, but is still in the swapfile.
Total KBytes	The total amount of memory in your system in kilobytes.
Total Swap KBytes	The total amount of swap space in your system in kilobytes.
Total VM KBytes	The total amount of system physical and memory and swap space (Total Kbytes + Total Swap Kbytes) that is in use in your system in kilobytes.

Counter	Description
Used KBytes	The amount of system physical memory that is in use on the system in kilobytes. The value of the Used KBytes counter equals Total KBytes - Free KBytes - Buffers KBytes - Cached KBytes + Shared KBytes. The Used KBytes value differs from the Linux term that displays in the top or free command output. The Used value that displays in the top or free command output equals the difference in Total KBytes - Free KBytes and also includes the sum of Buffers KBytes and Cached KBytes.
Used Swap KBytes	The amount of swap space that is in use on your system in kilobytes.
Used VM KBytes	The system physical memory and the amount of swap space that is in use on your system in kilobytes. The value equals Total KBytes - Free KBytes - Buffers KBytes - Cached KBytes + Shared KBytes + Used Swap KBytes. This corresponds to Used Mem KBytes + Used Swap KBytes.

Network Interface

The Network Interface object provides information about the network interfaces on the system.

Counter	Description
RxBytes	The number of bytes, including framing characters, that was received on the interface.
Rx Dropped	This represents the number of inbound packets that was chosen to be discarded even though no errors had been detected. Discarding packets prevents the packet from being delivered to a higher layer protocol, for example, to free up buffer space.
Rx Errors	This represents the number of inbound packets (for packet-oriented interfaces) and the number of inbound transmission units (for character-oriented or fixed-length interfaces) that contained errors that prevented them from being deliverable to a higher layer protocol.
Rx Multicast	This represents the number of multicast packets that was received on this interface.
Rx Packets	This represents the number of packets that this sublayer delivered to a higher sublayer. This does not include the packets that were addressed to a multicast or broadcast address at this sublayer.
Total Bytes	This represents the total number of received (Rx) bytes and transmitted (Tx) bytes.
Total Packets	This represents the total number of received (Rx) packets and transmitted (Tx) packets.
Tx Bytes	This represents the total number of octets, including framing characters, that was transmitted out of the interface.

Counter	Description
Tx Dropped	This represents the number of outbound packets that was chosen to be discarded even though no errors were detected. Discarding a packet prevents the packet from being delivered to a higher layer protocol, for example, to free up buffer space.
Tx Errors	This represents the number of outbound packets (for packet-oriented interfaces) and the number of outbound transmission units (for character-oriented or fixed-length interfaces) that could not be transmitted because of errors.
Tx Packets	This represents the total number of packets that the higher level protocols requested for transmission, including those that were discarded or not sent. This does not include packets that were addressed to a multicast or broadcast address at this sublayer.
Tx QueueLen	This represents the length, measured in packets, of the output packet queue.

Number of Replicates Created and State of Replication

The Number of Replicates Created and State of Replication object provides real-time replication information for the system.

Counter	Description
Number or Replicates Created	Displays the number of replicates that were created by Informix for the DB tables. This counter displays information during Replication Setup.
Replicate_State	<p>This counter represents the state of replication. The following list provides possible values:</p> <ul style="list-style-type: none"> • 0 = Initializing. The counter equals 0 when the server is not defined or when the server is defined but realizes the template has not completed. • 1 = Replication setup script fired from this node. You can run <code>utils dbreplication status</code> on the CLI to determine the location and cause of the failure. • 2 = Good Replication. • 3 = Replication. A counter value of 3 indicates replication in the cluster is bad. It does not mean that replication failed on a particular server in the cluster. You can run <code>utils dbreplication status</code> on the CLI to determine the location and cause of the failure. • 4 = Replication setup did not succeed.

Partition

The Partition object provides information about the file system, its usage in the system, and the disk utilization on a per-partition basis on the system.

Counter	Description
% CPU Time	The percentage of CPU time that is dedicated to handling IO requests that were issued to the disk.
% Used	The percentage of disk space that is in use on this file system.
% Wait in Read	Not used. It has been rendered obsolete by the Await Read Time counter.
% Wait in Write	Not used. It has been rendered obsolete by the Await Write Time counter.
Await Read Time	The average time, measured in milliseconds, for read requests issued to the device to be served.
Await Time	The average time, measured in milliseconds, for I/O requests that were issued to the device to be served. This includes the time that the requests spent in queue and the time that was spent servicing them.
Await Write Time	The average time, measured in milliseconds, for write requests that are issued to the device to be served.
Queue Length	The average queue length for the requests that were issued to the disk.
Read Bytes Per Sec	The amount of data in bytes per second that was read from the disk.
Total Mbytes	The amount of total disk space in megabytes that is on this file system.
Used Mbytes	The amount of disk space in megabytes that is in use on this file system.
Write Bytes Per Sec	The amount of data that was written to the disk in bytes per second.

PermalinkInfo

Counter	Description
ExcelPermalinksViewed	Total number of excel permalink views.
ExcelPermalinksViewedInterval	Total number of excel permalinks viewed over the last interval.
HTMLPermalinksViewed	Total number of HTML permalink views.
HTMLPermalinksViewedInterval	Total number of HTML permalinks viewed over the last interval.
TotalPermalinksViewed	The sum of report and dashboard permalinks viewed.
TotalPermalinksViewedInterval	The sum of report and dashboard permalinks viewed over the last interval.

Counter	Description
XMLPermalinksViewed	Total number of XML permalink viewed.
XMLPermalinksViewedInterval	Total number of XML permalinks viewed over the last interval.

Process

Counter	Description
% CPU Time	Expressed as a percentage of total CPU time, represents the task's share of the elapsed CPU time since the last update.
% Memory Usage	The percentage of physical memory that a task is currently using.
Data Stack Size	The stack size for task memory status.
Nice	The nice value of the task. A negative nice value indicates that the process has a higher priority. A positive nice value indicates that the process has a lower priority. If the nice value equals zero, do not adjust the priority when you are determining the dispatchability of a task.
Page Fault Count	The number of major page faults that a task encountered that required the data to be loaded into memory.
PID	The task's unique process ID, which periodically wraps, though never restarting at zero.
Process Status	The task's process status: 0 - Running, 1 - Sleeping, 2 - Uninterruptible disk sleep, 3 - Zombie, 4 - Traced or stopped (on a signal), 5 - Paging, 6 - Unknown.
Shared Memory Size	The amount of shared memory, in KB, that a task is using. Other processes could potentially share the same memory.
STime	The amount of system time (STime), measured in jiffies, for which this process has been scheduled in kernel mode. A jiffy corresponds to a unit of CPU time and gets used as a base of measurement. One second is equal to 100 jiffies.
Thread Count	The number of threads that are currently grouped with the task. A negative value -1 indicates that this counter is currently not available because thread statistics (including all performance counters in the Thread object as well as the Thread Count counter in the Process object) have been turned off because the system's total processes and threads have exceeded the default threshold value.
Total CPU Time Used	The total CPU time, measured in jiffies, that the task has consumed in user mode and kernel mode since the start of the task. One second is equal to 100 jiffies.
UTime	The amount of time, measured in jiffies, that the task has been scheduled for in user mode. One second is equal to 100 jiffies.

Counter	Description
VmDate	The virtual memory usage of the heap for the task in kilobytes (KB).
VmRSS	The virtual memory (Vm) resident set size (RSS) that is currently in physical memory in kilobytes (KB), including Code, Data, and Stack.
VmSize	The total amount of virtual memory, in KB, that the task is using. It includes all code, data, shared libraries, and pages that have been swapped out: Virtual I

Processor

Counter	Description
% CPU Time	The processor's share of the elapsed CPU time excluding the idle time since last update, expressed as a percentage of CPU time.
Idle Percentage	The percentage of time that the CPU or CPUs were idle and the system did not have an outstanding disk I/O request.
IOWait Percentage	The percentage of time that the CPU or CPUs were idle, during which the system had an outstanding disk I/O request.
Irq Percentage	The percentage of time that the processor is executing the interrupt request which is assigned to devices for interrupt, or sending a signal to the computer when it is finished processing.
Nice Percentage	The percentage of CPU utilization that occurred while running at the user level with nice priority.
Softirq Percentage	The percentage of time that the processor is executing the softirq, which means that task switching is deferred until later to achieve better performance.
System Percentage	The percentage of CPU utilization that occurred while running at the system level (kernel).
User Percentage	The percentage of CPU utilization that occurred while running at the user level (application).

Ramfs

Counter	Description
FilesTotal	The total number of files in the ram-based filesystem (ramfs).
SpaceFree	The amount of free data blocks in the ram-based filesystem (ramfs). A block is a uniformly sized unit of data storage for a filesystem. The block size specifies the size that the filesystem will use to read and write data.

Counter	Description
SpaceUsed	The amount of used data blocks in the ram-based filesystem (ramfs). A block is a uniformly sized unit of data storage for a filesystem. The block size specifies the size that the filesystem will use to read and write data.

Reporting Engine Info

Counter	Description
Report (H/RT) CellsRetrieved	Total number of cells (rows times columns) that have been retrieved from all data sources.
Report (H/RT) CellsRetrievedInterval	Total number of cells (rows times columns) that have been retrieved from all data sources over the last interval.
Report (H/RT) Completed	Total number of reports that have been successfully run.
Report (H/RT) CompletedInterval	Change of counter Report (H/RT) Completed over the last interval.
Report (H/RT) Data PreprocessingTimeChart	Total amount of time spent processing report's data to display it in charts.
Report (H/RT) Data PreprocessingTimeChartInterval	Change of counter Report (H/RT) DataPreprocessingTimeChart over the last interval.
Report (H/RT) Data PreprocessingTimeGauge	Total amount of time spent processing report's data to display it in gauges.
Report (H/RT) Data PreprocessingTimeGaugeInterval	Change of counter Report (H/RT) DataPreprocessingTimeGauge over the last interval.
Report (H/RT) Data PreprocessingTimeGrid	Total amount of time spent processing report's data to display it in grids.
Report (H/RT) Data PreprocessingTimeGridInterval	Change of counter Report (H/RT) DataPreprocessingTimeGrid over the last interval.
Report (H/RT) DataSetFetch Accepted	The total number of times that a request to fetch a DataSet has been accepted. Not all requests to fetch a DataSet are accepted. If the data for a report is already being fetched, another worker thread is not created to retrieve the same data.
Report (H/RT) DataSetFetch AcceptedInterval	The interval measure of the above counter.

Counter	Description
Report (H/RT) DataSetFetch Requests	<p>The total number of times that a request to fetch data from a Data Source has been received.</p> <p>This happens every time a report is launched for the first time (in which case, there is also a request to create a new DataSetInfo object), and every time there is a request to refresh a report that has already been launched.</p>
Report (H/RT) DataSetFetch RequestsInterval	The interval measure of the Report (H/RT) DataSetFetchRequests counter.
Report (H/RT) DataSetInfo Created	<p>Out of all the requests for a new DataSetInfo object (Report (H/RT) DataSetInfoRequested), how many times a new object has actually been created.</p> <p>An object is actually created only when one does not already exist for the same Report Definition and Filter. This is the case if no user has ever run that Report Definition with that Filter or if the Purge mechanism of the Unified Intelligence Center DB has cleared up any record of previous users running that Report Definition with that Filter.</p>
Report (H/RT) DataSetInfo CreatedInterval	The interval measure of the Report (H/RT) DataSetInfoCreated counter.
Report (H/RT) DataSetInfo Requested	<p>The total number of times that a request to create a new DataSetInfo object has been received.</p> <p>A new DataSetInfo object is created when a report is being launched for the very first time. By report what is meant is the combination of a Report Definition and a Filter. For example, executing Report Definition (template) R1 with Filter F1 produces DataSetInfo D1<R1, F1>. Executing Report Definition R2 with Filter F2 produces DataSetInfo D2<R2, F2>.</p> <p>If another user runs Report Definition (template) R1 with Filter F1, a request to create a new DataSetInfo object is received, but a new object will not be created. Instead, D1 will be reused, DataSetInfo D1<R1, F1>.</p>
Report (H/RT) DataSetInfo RequestedInterval	The interval measure of the Report (H/RT) DataSetInfoRequested counter.
Report (H/RT) DataSetInfo Read	The number of times that a view (grid/gauge/chart) has read the data of a (H/RT) report. This tells how many times the data of reports is being prepared to be displayed to a user (turned into HTML or XML).
Report (H/RT) DataSetInfo ReadInterval	The interval measurement of the Report (H/RT) DataSetReadTotal counter.

Counter	Description
ReportExecutionSqlStatementPrepareTime	Time taken to prepare the SQL statement (milliseconds).
ReportExecutionSqlStatementPrepareTimeInterval	Change of counter ReportExecutionSqlStatementPrepareTime over the last interval.
Report (H/RT) Failed	The total number of reports that have failed. The total number of times that Unified Intelligence Center has tried to fetch data from a Data Source but it has not been able to.
Report (H/RT) FailedInterval	The interval measurement of the Report (H/RT) Failed counter.
ReportGridHtmlGenerationTime	Time taken to generate grid html (milliseconds)
ReportGridHtmlGenerationTimeInterval	Change of counter ReportGridHtmlGenerationTime over the last interval
Report (H/RT) RenderedChart	Total number of times that the data of a report has been turned into a Chart and sent to a browser (or any other client).
Report (H/RT) RenderedChart Interval	The interval measurement of the Report (H/RT) RenderedChart counter.
Report (H/RT) RenderedGauge	Total number of times that the data of a report has been turned into a Gauge and sent to a browser (or any other client).
Report (H/RT) RenderedGauge Interval	The interval measurement of the Report (H/RT) RenderedGauge counter.
Report (H/RT) RenderedGrid	Total number of times that the data of a report has been turned into a Grid and sent to a browser (or any other client).
Report (H/RT) RenderedGrid Interval	The interval measurement of the Report (H/RT) RenderedGrid counter.
Report (H/RT) RenderedRows Retrieved	The total number of rows that have been retrieved by Unified Intelligence Center from data sources.
Report (H/RT) RenderedRows RetrievedInterval	The interval measurement of the Report (H/RT) RowsRetrievedTotal counter.
Report (H/RT) Running	The number of (H/RT) reports that are currently running. A report is currently running when the Runnable object has been assigned a thread from the pool. It does not include those that are waiting in a queue for a thread to become available.

Counter	Description
Report (H/RT) Running Interval	The interval measurement of the Report (H/RT) Running counter.
Report (H/RT) Runtime	Total amount of seconds spent running reports.
Report (H/RT) RuntimeInterval	Change of counter Report (H/RT) Runtime over the last interval.
Report (H/RT) Runtime DatasourceTime	The number of seconds or milliseconds that Unified Intelligence Center has spent waiting for ICM, or any other database, to return the data of a query. This includes the time from the moment Unified Intelligence Center commits the JDBC query to the moment Unified Intelligence Center gets control back (when the worker thread stops being in an I/O blocked state). Subset of Report (H/RT) Runtime. Amount of time that was spent waiting for data sources to return the report's data.
Report (H/RT) Runtime DatasourceTimeInterval	The interval measurement of the Report (H/RT) DataSourceTimeTotal counter.
Report (H/RT) Waiting	Total number of reports that are currently queued for execution.
Report (H/RT) Waiting Interval	Change of counter ReportRealtimeWaiting over the last interval.
ReportWorkerThreadQueueLatency	Total latency for worker thread to be available for report execution (milliSeconds).
ReportWorkerThreadQueueLatencyInterval	Change of counter ReportWorkerThreadQueueLatency over the last interval.
ReportsUniqueUsersLoggedInInterval	Total number of unique logged-in users over the past interval. Does not count same user who leaves and comes back within the interval.
ReportsUsersFailedLoginAttempts	Total number of failed login attempts.
ReportsUsersFailedLoginAttemptsInterval	Change of counter ReportsUsersFailedLoginAttempts over the last interval.
ReportsUsersLoggedIn	Total number of users that are currently logged in.

RESTInfo

Counter	Description
ConfigurationCalls	Total number of configuration REST calls made to Unified Intelligence Center.

Counter	Description
ConfigurationCallsInterval	Total number of configuration REST calls made to Unified Intelligence Center over the last interval.
ReportCalls	Total number of Report REST calls made to Unified Intelligence Center.
ReportCallsInterval	Total number of Report REST calls made to Unified Intelligence Center over the last interval.
ReportDefinitionCalls	Total number of Report Definition REST calls made to Unified Intelligence Center.
ReportDefinitionCallsInterval	Total number of Report Definition REST calls made to Unified Intelligence Center over the last interval.
TotalRESTCalls	Total number of REST calls made to Unified Intelligence Center.
TotalRESTCallsInterval	Total number of REST calls made to Unified Intelligence Center over the last interval.

SchedulerInfo

Counter	Description
SchedulerJobsCompletedCount	The number of jobs that the scheduler service has completed.
SchedulerJobsFailedCount	The number of jobs that the scheduler service has failed to complete successfully.
SchedulerJobsRunningCount	The number of jobs that the scheduler service is currently running.
SchedulerState	The current state of the scheduler. The possible values are: 0. - Stopped, 1.- Idle, 2.- Suspended and 3.-Running.
DashboardScheduleCount	The number of dashboard schedule executions.
EmailExcelCount	The number of jobs which send provided report execution results as Excel in email.
EmailHTMLCount	The number of jobs which send provided report execution results as HTML in email.
EmailPDFCount	The number of jobs which send provided report execution results as PDF in email.
SFTPCount	The number of jobs which saves report execution results to the given remote location.

Counter	Description
SchedulerJobsFailedCount	The number of jobs that the scheduler service has failed to complete successfully.
SchedulerJobsRunningCount	The number of jobs that the scheduler service is currently running.

Counter	Description
EmailExcelCount	The number of jobs which send provided report execution results as Excel in email.
EmailHTMLCount	The number of jobs which send provided report execution results as HTML in email.
EmailPDFCount	The number of jobs which send provided report execution results as PDF in email.
SFTPCount	The number of jobs which saves report execution results to the given remote location.

System

The System object provides information for file descriptors (FD), total processes and threads, total CPU time measured on the system.

Counter	Description
Allocated FDs	Represents the total number of allocated file descriptors.
Being Used FDs	Represents the number of file descriptors that is currently in use in the system.
Freed Fds	Represents the total number of allocated file descriptors on the system that is freed.
IOAwait	The average time, in milliseconds, for I/O requests issued to all devices to be served. This includes the time spent by the requests in queue and the time spent servicing the requests.
IOCPUUtil	The percentage of CPU time during which I/O requests were issued to the device (bandwidth utilization for the device) on this server.
IODeviceReqQueueSize	The average queue length of the requests that were issued to all devices on this server.
IODeviceReqSectorSize	The average size in sectors of the requests that were issued to all devices on this server.
IOKBytesReadPerSecond	The total number of KBytes read per second from all devices on this server.
IOKBytesWrittenPerSecond	The total number of KBytes written per second to all devices on this server.
IOPerSecond	The total number of input/output operations on all disk partitions per second on this server. If you experience a system performance issue, use the information in this counter to measure the impact of the aggregate I/O operations on this server.

Counter	Description
IOReadReqPerSecond	The total number of read requests per second that were issued to all devices on this server.
IOReadQueueMergedPerSecond	The total number of read requests merged per second that were queued to all devices on this server.
IOSectorsReadPerSecond	The total number of sectors read per second from all devices on this server.
IOSectorsWrittenPerSecond	The total number of sectors written per second to all devices on this server.
IOServiceTime	The average service time, in milliseconds, for I/O requests that were issued to all devices on this server.
IOWriteReqPerSecond	The total number of write requests per second that were issued to all devices on this server.
IOWriteReqQueueMergedPerSecond	The total number of write requests merged per second that were queued to all devices on this server.
Max Fds	Represents the maximum number of file descriptors that is allowed on the system.
Total CPU Time	Represents the total time, measured in jiffies, that the system has been up and running. A jiffy corresponds to a unit of CPU time and gets used as a base of measurement. One second is equal to 100 jiffies.
Total Processes	Represents the total number of processes on the system.
Total Threads	Represents the total number of threads on the system.

TCP

Counter	Description
Active Opens	The number of times that TCP connections have made a direct transition to the SYN-SENT state from the CLOSED state.
Attempt Fails	The number of times that TCP connections have made a direct transition to the CLOSED state from either the SYN-RCVD state or the SYN-RCVD state, plus the number of times TCP connections have made a direct transition to the LISTEN state from the SYN-RCVD state.
Curr Estab	The number of TCP connections for which the current state is either ESTABLISHED or CLOSE-WAIT.
Estab Resets	The number of times that the TCP connections have made a direct transition to the CLOSED state from either the ESTABLISHED state or the CLOSE-WAIT state.

Counter	Description
In Segs	The total number of segments received, including those received in error. This count includes segments received on currently established connections.
InOut Segs	The total number of segments that were sent and the total number of segments that were received.
Out Segs	The total number of segments sent, including those on current connections but excluding those containing only retransmitted octets.
Passive Opens	The number of times that TCP connections have made a direct transition to the SYN-RCVD state from the LISTEN state.
RetransSegs	The total number of segments retransmitted, that is, the number of TCP segments transmitted containing one or more previously transmitted octets.

Thread

Counter	Description
% CPU Time	The thread's share of the elapsed CPU time since the last update, expressed as a percentage of total CPU time.
PID	The thread's leader process ID.

Disaster Recovery System

Backup and Restore Overview

The Disaster Recovery System (DRS) provides full data backup for all servers in a Cisco Unified Intelligence Center cluster. It allows you to perform regularly scheduled automatic or user-invoked data backups.

The Disaster Recovery System performs a cluster-level backup, which means that it collects backups for all servers in a Cisco Unified Intelligence Center cluster to a central location and archives the backup data to physical storage device. Backup files are encrypted and can be opened only by the system software.

DRS restores its own settings (backup device settings and schedule settings) as part of the platform backup/restore. DRS backs up the drfDevice.xml and drfSchedule.xml files. When the server is restored with these files, you do not need to reconfigure DRS backup device and schedule.

The Disaster Recovery System includes the following capabilities:

- A user interface for performing backup and restore tasks.
- A distributed system architecture for performing backup functions.
- Scheduled backups or manual (user-invoked) backups.

Backup Prerequisites

To back up data to a remote device on the network, you must have an SFTP server that is configured. You can use an SFTP server product that is certified with Cisco Technology Partners. Technology partners certify their products with specified versions of Cisco Unified Communications Manager. For information on which vendors have certified their products with your version of Cisco Unified Communications Manager, see the *Solutions Catalog* on the Cisco Developer Network at <https://marketplace.cisco.com>.

Ensure that all cluster nodes are running the same version of Cisco Unified intelligence Center. If different nodes are running different versions, the certificates will not match and your backup or restore could fail.



Note Retest the DRS with your SFTP server after you upgrade your Unified Communications Manager, upgrade your SFTP server, or you switch to a different SFTP server. Perform this step to ensure that these components operate correctly together. Additionally, perform a backup and restore on a standby or backup server.

Use the information in the following table to determine which SFTP server solution to use in your system.

Table 1: SFTP Server Information

SFTP Server	Information
SFTP Server on Cisco Prime Collaboration Deployment	This server is provided and tested by Cisco, and supported by Cisco TAC. Version compatibility depends on your version of Unified Communications Manager and Cisco Prime Collaboration Deployment. See the <i>Cisco Prime Collaboration Deployment Admin Guide</i> before you upgrade its version (SFTP) or Unified Communications Manager to ensure that the versions are compatible.
SFTP Server from a Technology Partner	These servers are third party provided, third party tested, and jointly supported by TAC and the Cisco vendor. Version compatibility depends on the third party test. See the Technology Partner page if you upgrade their SFTP product and/or upgrade Unified Communications Manager for which versions are compatible: https://marketplace.cisco.com
SFTP Server from another Third Party	These servers are third party provided, have limited Cisco testing, and are not officially supported by Cisco TAC. Version compatibility is on a best effort basis to establish compatible SFTP versions and Unified Communications Manager versions. For a fully tested and supported SFTP solution, use Cisco Prime Collaboration Deployment or a Technology Partner.

Cisco uses the following servers for internal testing. You may use one of the servers, but you must contact the vendor for support:

- Open SSH
- Cygwin
- Titan

Cisco does not support using the SFTP product freeFTPD. This is because of the 1GB file size limit on this SFTP product.

For Cygwin to function properly as your backup SFTP server, you must add the following lines to the `sshd_config` file:

The cipher key: `ciphers aes128-cbc`

The Unified Communications Algorithm: `KexAlgorithms diffie-hellman-group-exchange-sha1,diffie-hellman-group1-sha1`

For details on how to set up third-party SFTP products, contact the third-party vendor for support. For issues with third-party products that have not been certified through the Cisco Technology Developer Program process, contact the third-party vendor for support



Note While a backup or restore is running, you cannot perform any OS Administration tasks, because Disaster Recovery System blocks all OS Administration requests by locking the platform API. However, Disaster Recovery System does not block most CLI commands, because only the CLI-based upgrade commands use the Platform API locking package.

Backup Procedure Taskflow

Configure backup devices

You can configure up to 10 backup devices. Perform the following steps to configure the location where you want to store backup files.

Before you begin

- Ensure you have write access to the directory path in the SFTP server to store the backup file.
- Ensure that the username, password, server name, and directory path are valid as the DRS Primary Agent validates the configuration of the backup device.



Note Schedule backups during periods when you expect less network traffic.

Procedure

-
- Step 1** From Disaster Recovery System, select **Backup > Backup Device**.
- Step 2** In the **Backup Device List** window, do either of the following:

- To configure a new device, click **Add New**.
- To edit an existing backup device, enter the search criteria, click Find, and **Edit Selected**.
- To delete a backup device, select it in the **Backup Device** list and click **Delete Selected**.

You cannot delete a backup device that is configured as the backup device in a backup schedule.

Step 3 Enter a backup name in the **Backup Device Name** field.

The backup device name contains only alphanumeric characters, spaces (), dashes (-) and underscores (_). Do not use any other characters.

Step 4 In the **Select Destination** area, under **Network Directory** perform the following:

- In the **Host name/IP Address** field, enter the hostname or IP address for the network server.
- In the **Path name** field, enter the directory path where you want to store the backup file.
- In the **User name** field, enter a valid username.
- In the **Password** field, enter a valid password.
- From the **Number of backups to store on Network Directory** drop-down list, choose the required number of backups.

Step 5 Click **Save**.

What to do next

[Estimate Size of Backup Tar, on page 37](#)

Configure a Schedule Backup

You can create up to 10 backup schedules. Each backup schedule has its own set of properties, including a schedule for automatic backups, the set of features to back up, and a storage location.



Caution Schedule backups during off-peak hours to avoid service interruptions.

Before you begin

[Configure backup devices](#)

Procedure

Step 1 From the Disaster Recovery System, choose **Backup Scheduler**.

Step 2 In the **Schedule List** window, do one of the following steps to add a new schedule or edit an existing schedule.

- To create a new schedule, click **Add New**.
- To configure an existing schedule, click the name in the Schedule List column.

Step 3 In the **scheduler** window, enter a schedule name in the **Schedule Name** field.

Note You cannot change the name of the default schedule.

- Step 4** Select the backup device in the **Select Backup Device** area.
- Step 5** Select the features to back up in the **Select Features** area. You must choose at least one feature.
- Step 6** Choose the date and time when you want the backup to begin in the **Start Backup at** area.
- Step 7** Choose the frequency at which you want the backup to occur in the **Frequency** area. The frequency can be set to Once Daily, Weekly, and Monthly. If you choose **Weekly**, you can also choose the days of the week when the backup will occur.
- Tip** To set the backup frequency to **Weekly**, occurring Tuesday through Saturday, click **Set Default**.
- Step 8** To update these settings, click **Save**.
- Step 9** Choose one of the following options:
- To enable the selected schedules, click **Enable Selected Schedules**.
 - To disable the selected schedules, click **Disable Selected Schedules**.
 - To delete the selected schedules, click **Delete Selected**.
- Step 10** To enable the schedule, click **Enable Schedule**.
- The next backup occurs automatically at the time that you set.
- Note** Ensure that all servers in the cluster are running the same version of Cisco Unified Intelligence Center and are reachable through the network. Servers that are not reachable at the time of the scheduled backup will not get backed up.

What to do next

(Optional) View Current Backup Status

Start a Manual Backup

Before you begin

- Ensure that all cluster nodes have the same installed version of Cisco Unified Intelligence Center.
- Ensure that there is adequate space in the remote server.
- Ensure that there are no network interruptions.
- [Configure backup devices](#)
- Be aware that your backup .tar files are encrypted by a randomly generated password. This password is then encrypted by using the cluster security password and gets saved along with the backup .tar files. You must remember this security password or take a backup immediately after the security password change/reset.

Procedure

- Step 1** From the Disaster Recovery System, select **Backup > Manual Backup**.
- Step 2** In the **Manual Backup** window, select a backup device from the **Backup Device Name** area.

- Step 3** Choose a feature from the **Select Features** area.
- Step 4** Click **Start Backup**.

What to do next

(Optional) View Current Backup Status

View Current Backup Status

Perform the following steps to check the status of the current backup job.



Caution Be aware that if the backup to the remote server is not completed within 20 hours, the backup session times out and you must begin a fresh backup.

Procedure

-
- Step 1** From the Disaster Recovery System, select **Backup > Current Status**.
- Step 2** To view the backup log file, click the log filename link.
- Step 3** To cancel the current backup, click **Cancel Backup**.

Note The backup cancels after the current component completes its backup operation.

What to do next

[View Backup History, on page 38](#)

Estimate Size of Backup Tar

Cisco Unified Intelligence Center will estimate the size of the backup tar, only if a backup history exists for one more selected features.

The calculated size is not an exact value but an estimated size of the backup tar. Size is calculated based on the actual backup size of a previous successful backup and may vary if the configuration changed since the last backup.

You can use this procedure only when the previous backups exist and not when you back up the system for the first time.

Follow this procedure to estimate the size of the backup tar that is saved to a SFTP device.

Procedure

-
- Step 1** From the Disaster Recovery System, select **Backup > Manual Backup**.
- Step 2** In the **Select Features** area, select the features to back up.

Step 3 Click **Estimate Size** to view the estimated size of backup for the selected features.

What to do next

[View Backup History, on page 38](#)

View Backup History

Perform the following steps to view the backup history.

Procedure

Step 1 From the Disaster Recovery System, select **Backup > History**.

Step 2 From the **Backup History** window, you can view the backups that you have performed, including filename, backup device, completion date, result, version, features that are backed up, and failed features.

Note The **Backup History** window displays only the last 20 backup jobs.

Network Management

Configure SNMP-Associated Settings

This page launches the Cisco Unified Serviceability application, which gives menu access for configuring SNMP-associated settings, such as community strings, users, and notification destinations for V1, V2c, and V3.

Open online help for SNMP configuration from within the Serviceability application.



Note You cannot click the **Back** button on this page to return to the Unified Intelligence Center Administration console.

To return to the Administration console:

- Close the Cisco Unified Serviceability page, or
- Select Cisco Unified Intelligence Center in the Navigation drop-down menu at the top right of the screen. Then click **Go**.

Unified Intelligence Center SNMP MIBs

The Unified Intelligence Center SNMP sub-agent captures the following in a Management Information Base (MIB). All are scalar objects.

MIB Objects

CuicGeneralInfo

This table contains a list of Unified Intelligence Center servers. An entry in this table represents a Unified Intelligence Center server in this cluster.

A row is created in this table whenever a new server is added to the cluster. A row is deleted when a server is removed from the cluster.

MIB	Description
cuicGeneralInfoServerName	Host name for the Unified Intelligence Center server as entered during installation.
cuicGeneralInfoServerDescription	The description of the Unified Intelligence Center application installed on this server, as entered for the application during installation.
cuicGeneralInfoVersion	The version number of the Unified Intelligence Center software installed on the server displayed in the format CUIC_<major>_<minor>_<buildnumber>.
cuicGeneralInfoStartTime	This object indicates the starting time for the Unified Intelligence Center application server.
cuicGeneralInfoTimeZoneName	The time zone where the Unified Intelligence Center server is physically located.
cuicGeneralInfoSystemStatus	The last known status of the application. Status of the reporting service: <ul style="list-style-type: none"> 'inService' = The service is up and running optimally, accepting connections. 'partialService' = Some of the components comprising the application are not running; the service is in warning state. 'notresponding' = The service is either shut down or not responding. 'unknown' = The service status is unknown.
cuicGeneralInfoOpsConsoleURL	The URL for the Unified Intelligence Center Administration operations console web server.
cuicGeneralInfoEnableNotifications	This object specifies the notification status to management station, to disable and alternatively enable outbound notifications on this server.

CuicReporting

The CuicReporting table lists the statistics of the Cisco Unified Intelligence Center Reporting nodes. A row is created in the CuicReporting table when a new server is added to the cluster. A row is deleted when a server is removed from this cluster.

MIB	Description
cuicReportingDataSourceCount	The number of Data Sources that are configured in the Cisco Unified Intelligence Center Reporting application.
cuicReportingEngineStatus	The last known status of the reporting engine: <ul style="list-style-type: none"> 'running' = Service is running and can fetch data from the data source. 'stopped' = Service is shutdown. 'unknown' = The status is unknown.
cuicReportingHistoricalReportDefinitionCount	The number of historical report definitions installed on the Cisco Unified Intelligence Center application. A report definition is a template for a report. Each report has an association with a report definition.
cuicReportingRealTimeReportDefinitionCount	The number of real time report definitions installed on the Unified Intelligence Center application.
cuicReportingHistoricalReportRunning	The number of historical reports that are currently running.
cuicReportingHistoricalReportWaiting	The number of historical reports that are currently waiting to be run.
cuicReportingTotalKickedOffHistoricalReports	The total number of historical reports that have been launched since the server last started.
cuicReportingRealTimeReportRunning	Number of real time reports currently running.
cuicReportingRealTimeReportWaiting	The number of real time reports that are currently waiting to be run.
cuicReportingTotalKickedOffRealTimeReports	Number of real time reports run since server last started.
cuicReportingHistoricalHTMLPermalinkDataSetRead	The total number of times the historical reports were read without querying the database. This includes only the number of times that the reports were read in HTML format by using Permalinks.
cuicReportingHistoricalEXCELPermalinkDataSetRead	The total number of times the historical reports were read without querying the database. This includes only the number of times that the reports were read in EXCEL format by using Permalinks.

MIB	Description
cuicReportingHistoricalXMLPermalinkDataSetRead	The total number of times the historical reports were read without querying the database. This includes only the number of times that the reports were read in XML format by using Permalinks.
cuicReportingHistoricalHTMLPermalinkDataSetCreated	The total number of times the historical reports were created by querying the database. This includes only the number of times that the reports were created in HTML format by using Permalinks.
cuicReportingHistoricalEXCELPermalinkDataSetCreated	The total number of times the historical reports were created by querying the database. This includes only the number of times that the reports were created in EXCEL format by using Permalinks.
cuicReportingHistoricalXMLPermalinkDataSetCreated	The total number of times the historical reports were created by querying the database. This includes only the number of times that the reports were created in XML format by using Permalinks.
cuicReportingRealtimeHTMLPermalinkDataSetRead	The total number of times the realtime reports were read without querying the database. This includes only the number of times that the reports were read in HTML format by using Permalinks.
cuicReportingRealtimeEXCELPermalinkDataSetRead	The total number of times the realtime reports were read without querying the database. This includes only the number of times that the reports were read in EXCEL format by using Permalinks.
cuicReportingRealtimeXMLPermalinkDataSetRead	The total number of times the realtime reports were read without querying the database. This includes only the number of times that the reports were read in XML format by using Permalinks.
cuicReportingRealtimeHTMLPermalinkDataSetCreated	The total number of times the realtime reports were created by querying the database. This includes only the number of times that the reports were created in HTML format by using Permalinks.
cuicReportingRealtimeEXCELPermalinkDataSetCreated	The total number of times the realtime reports were created by querying the database. This includes only the number of times that the reports were created in EXCEL format by using Permalinks.
cuicReportingRealtimeXMLPermalinkDataSetCreated	The total number of times the realtime reports were created by querying the database. This includes only the number of times that the reports were created in XML format by using Permalinks.

CuicReportScheduler

This table lists Report Scheduler health and statistics. A row is created in this table whenever the Scheduler Component is enabled on a server in this cluster.

MIB	Description
cuicSchedulerStatus	<p>The status of the reporting scheduler engine:</p> <ul style="list-style-type: none"> 'running' = Service is running and can generate a report on execution. 'stopped' = Service is shutdown. 'unknown' = The status is unknown. <p>Note Only the primary node is responsible for scheduling the reports. Hence, the 'cuicSchedulerStatus' MIB will be <i>inService(1)</i> for the publisher node and <i>notResponding(3)</i> for the subscriber nodes.</p>
cuicSchedulerEmailServerStatus	<p>The status of the email server:</p> <ul style="list-style-type: none"> 'running' = Service is running and can send email. 'stopped' = Service is shutdown. 'unknown' = The status is unknown.
cuicSchedulerJobsCompletedCount	The number of jobs that the scheduler service has completed since the server started.
cuicSchedulerJobsRunningCount	The number of jobs that the scheduler service is currently running. Note that this counter is not the number of reports scheduled.
cuicSchedulerJobsFailedCount	The number of jobs that the scheduler service has failed to complete successfully.

CuicDbInfo

This table gives the status of the Cisco Unified Intelligence Center database (cuic_data) and some performance monitoring counters.

The Cisco Unified Intelligence Center database exists on each node in the cluster and stores reports and configurations. The system replicates each Cisco Unified Intelligence Center database to other servers in a cluster.

Add a new row in the following table whenever a server is added to the cluster. Likewise, delete a row when a server is removed from the cluster.

MIB	Description
cuicDbInfoStatus	The status of the database server: <ul style="list-style-type: none"> • 'running' = The database server is up and running. • 'stopped' = The database server is shutdown. • 'unknown' = The database server is unknown.
cuicDbInfoReplicationStatus	The status of the last replication operation: <ul style="list-style-type: none"> • 'success' = Replication performed successfully. • 'fail' = Replication failed. • 'unknown' = Failed to get replication status.
cuicDbInfoTmpSpaceUsed	The amount of temporary space used. The value is displayed in percentage.
cuicDbInfoSpaceUsed	The amount of disk space used. The value is displayed in percentage.

CuicClusterInfo

The table gives information about the Cisco Unified Intelligence Center cluster.

MIB	Description
cuicClusterName	The unique name of the cluster, which helps in associating a device with the cluster.
cuicClusterServerCount	Number of Cisco Unified Intelligence Center servers in the cluster.
cuicClusterFirstNodeName	The hostname of the first node in the cluster. This is the Controller (publisher) node.

CuicSecurity

This table gives information about Users and User Groups.

MIB	Description
cuicSecurityUsersConfigured	The number of users that have been created to access Unified Intelligence Center.
cuicSecurityUsersLoggedIn	The number of users currently signed in.
cuicSecurityLoginFailedAttempts	The number of rejected login attempts.
cuicSecurityGroupsConfigured	The number of user groups created on this server.

CuicDataSourceInfo

This table gives information for the data source from that populates a report.

An entry in this table describes a data source configured on the Unified Intelligence Center server. A row is created in this table when a new data source is configured on the server. A row is deleted when a configured data source is removed from the server.

cuicDatasourceName	The name of the data source configured.
cuicDatasourceStatus	The status of the data source: <ul style="list-style-type: none"> • 'online' = The data source is connected, and it is online. • 'offline' = The data source is disconnected, and it is offline. • 'unknown' = The data source connectivity status is unknown.
cuicDatasourceHost	The host name of the database server.
cuicDatasourceType	The data source type: <ul style="list-style-type: none"> • 'mssql' = MS SQL datasource. • 'informix' = IBM Informix datasource. • 'other' = Unknown datasource.

MIB Notifications (CUIC TRAPs)

Trap notifications are sent by Unified Intelligence Center when unusual conditions occur that can potentially affect the functioning of a Unified Intelligence Center service. Each Notification describes the operation state information of a service when the condition occurs. Review traps to review information on issues occurring on the network element without polling for SNMP objects.

cuicEventId	The unique notification message identifier assigned by the Unified Intelligence Center application. This identifier is unique for each different notification but consistent for each instance of the same notification.
cuicEventHostName	The host name or the fully qualified domain name of the Unified Intelligence Center server from which this event originated.
cuicEventAppName	The service-specific name of the functional service that generated this notification.
cuicEventName	The service-specific name of the Unified Intelligence Center service notification message, used to group and correlate similar notifications.
cuicEventState	The state (not to be confused with severity) of the notification and potentially the current state of the functional component that generated the notification. Values are: <ul style="list-style-type: none"> • 'raise' = Identifies a notification received as a result of a health-impacting condition, such as a process failure. A subsequent clear state notification will follow when the error condition is resolved.

	<ul style="list-style-type: none"> 'clear' = Indicates that the condition which generated a previous raise notification has been resolved.
cuicEventSeverity	<p>The severity level of this notification. The severity levels are:</p> <ul style="list-style-type: none"> 'emergency' = A devastating failure has occurred; the system or service is unusable. Immediate operator intervention is required. 'alert' = A devastating failure is imminent that will render the system unusable. Immediate operator attention is necessary. 'critical' = A service-impacting failure is likely to occur soon; an error has occurred that was not appropriately handled by the system. Operator attention is needed as soon as possible. 'error' = Contains important operational state information and may indicate that the system has experienced a temporary impairment or an error that was appropriately handled by the system. An operator should review the notification soon to determine if action is needed. 'warning' = Contains important operational state information that may be a precursor to an error occurrence. An operator should review the notification soon to determine if action is needed. 'notice' = Contains health or operational state information that may be pertinent to the health of the system but does not require the attention of the administrator at this time. 'informational' = Contains interesting system-level information that is valuable to an administrator, however, the event itself does not indicate a failure or impairment condition. 'debug' = Provides supplemental information that may be beneficial toward diagnosing or resolving a problem but does not in itself provide operational health status.
cuicEventTimestamp	The date and time that the notification was generated on the originating device.
cuicEventText	The full text of the notification. This text includes a description of the event that was generated, component state information, and potentially a brief description of administrative action that may be necessary to correct the condition that caused the event to occur.

Event Name: CUIC_REPORT_EXECUTION_FAILED

Event Hostname	Hostname of the CUIC application.
Event Timestamp	Time when the SNMP trap was raised or cleared.
Event Severity	CRITICAL (3)
Event ID	61900
Event App Name	CUIC_DATA_PROCESSING

Event State	<ol style="list-style-type: none"> 1. When the SNMP trap is raised. 2. When the SNMP trap is cleared.
Event Text	The reporting server could not run a report. This could be because the associated datasource is offline - Worker thread: Error running report. Encountered a critical error trying to produce DataSet. Please check logs for more information.
Impact to Solution	You will not be able to run the report unless the underlying issue is resolved.
Recommended Action	<ol style="list-style-type: none"> 1. Check if datasource used by report is online. 2. Check if there is no error in the RD query or filter passed.

Event Name: CUIC_DB_REPLICATION_FAILED

Event Hostname	Hostname of the CUIC application.
Event Timestamp	Time when the SNMP trap was raised or cleared.
Event Severity	CRITICAL (3)
Event ID	61901
Event App Name	CUIC
Event State	<ol style="list-style-type: none"> 1. When the SNMP trap is raised. 2. When the SNMP trap is cleared.
Event Text	Database replication failed - Database replication service error.
Impact to Solution	Data across the nodes in the cluster may not be synchronized.
Recommended Action	<ol style="list-style-type: none"> 1. Check the informix logs to see the cause of failure.

Event Name: CUIC_DATABASE_UNAVAILABLE

Event Hostname	Hostname of the CUIC application.
Event Timestamp	Time when the SNMP trap was raised or cleared.
Event Severity	CRITICAL (3)
Event ID	61902
Event App Name	CUIC
Event State	<ol style="list-style-type: none"> 1. When SNMP trap is raised. 2. When SNMP trap is cleared.

Event Text	System detected critical error with database - Informix DB server is unavailable: <informix error message>
Impact to Solution	User will not be able to run CUIC application.
Recommended Action	<ol style="list-style-type: none"> 1. Check if the DB service is up and running. 2. Check the informix logs to see the cause of failure.

Event Name: CUIC_INITIAL_REPORT_IMPORT_FAILED



Note Applicable only for CCX.

Event Hostname	Hostname of the CUIC application.
Event Timestamp	Time when the SNMP trap was raised or cleared.
Event Severity	CRITICAL (3)
Event ID	61905
Event App Name	CUIC_DATA_PROCESSING
Event State	<ol style="list-style-type: none"> 1. When SNMP trap is raised. 2. When SNMP trap is cleared.
Event Text	Failing to import initial setup stock report. This can be because the associated datasource is offline.
Impact to Solution	Few or all UCCX Stock reports will not be imported.
Recommended Action	<ol style="list-style-type: none"> 1. Check the CUIC error logs to see the cause of failure. 2. Check if datasource is offline. 3. Check if there is no template issue. 4. After correcting the issue try to re-import the templates manually.

Event Name: CUIC_MSG_DASHBOARD_MIGRATION_FAILED

Event Hostname	Hostname of the CUIC application.
Event Timestamp	Time when the SNMP trap was raised or cleared.
Event Severity	CRITICAL (3)
Event ID	61906
Event App Name	CUIC_DATA_PROCESSING

Event State	<ol style="list-style-type: none"> 1. When the SNMP trap is raised. 2. When the SNMP trap is cleared.
Event Text	Dashboard migration has failed for some widgets. Please check dashboard-migration-failures.log for more information.
Impact to Solution	Few of the widgets can be missing in the dashboard, post-upgrade to 11.6+.
Recommended Action	<ol style="list-style-type: none"> 1. Check /opt/cisco/cuic/logs/dahsboard-migration-failures.log. 2. Manually create missing widgets.

Event Name: CUIC_HAZELCAST_CLUSTER_BROKEN

Event Hostname	Hostname of the CUIC application.
Event Timestamp	Time when the SNMP trap was raised or cleared.
Event Severity	CRITICAL (3)
Event ID	61907
Event App Name—	CUIC
Event State	<ol style="list-style-type: none"> 1. When the SNMP trap is raised. 2. When the SNMP trap is cleared.
Event Text	Hazelcast cluster is broken.
Impact to Solution	Data across the nodes in the cluster may not be synchronized.
Recommended Action	<ol style="list-style-type: none"> 1. Check the CUIC catalina log at the path - /opt/cisco/cuic/cuicsrvr/logs/catalina.outto identify the root cause for same.

ThreadPool Events

The thread pool information group defines the set of objects for the Unified reporting engine thread pool. All servers populate these objects.

Object	Description
ThreadsMaxAvailable	The maximum number of threads available to the Unified Intelligence Center web server thread pool manager.
ThreadsRunning	<p>The number of threads that are currently running tasks.</p> <p>This counter is useful in monitoring performance of the server. If the number of threads is close to the maximum available, then the next reporting request must wait until a thread becomes free.</p>

Object	Description
QueuedTasks	the number of queued tasks. A task is a job, performed by one or more thread.
QueuedTasksMax	The maximum number of queued tasks.

EnvInfo Events

The EnvInfo group defines the set of objects for the Runtime tomcat info. All servers populate these objects.

Object	Description
WaErrors	The total number of HTTP errors (for example, <i>401 Unauthorized</i>) encountered by a Unified Intelligence Center web application.
WaSessionsActive	The number of currently active (in use) sessions for the web application.
JvmPercentCPUTime	The percentage of CPU utilized by the Tomcat JVM. This object is for the Unified Intelligence Center Tomcat JVM object .
JvmMemoryFree	The amount of free dynamic memory in the Unified Intelligence Center Tomcat Java Virtual Machine.
JvmMemoryTotal	The Tomcat Java Virtual Machine current total dynamic memory, including free and in-use memory.
JvmMemoryMax	The Unified Intelligence Center Tomcat Java Virtual Machine maximum dynamic size.
TomcatThreadsBusy	The Unified Intelligence Center Tomcat Connector current number of busy/in-use request processing threads.
TomcatThreadsTotal	The Unified Intelligence Center Tomcat Connector current total number of request processing threads, including available and in-use threads.
TomcatThreadsMax	This object indicates the Connector maximum number of request processing threads. Each incoming request on a Unified Intelligence Center web page requires a thread for the duration of that request. If more simultaneous requests are received than can be handled by the currently available request processing threads, additional threads will be created up to the configured maximum shown in this counter.

