



## Multiple Record Configuration

---

- [Access Bulk Configuration Tools, on page 1](#)
- [Bulk Configure Data, on page 1](#)
- [Insert and Edit Windows, on page 2](#)
- [Multiple Record Configuration, on page 2](#)
- [Bulk Configuration Features, on page 3](#)

## Access Bulk Configuration Tools

---

- Step 1** Double-click **Configuration Manager** in the Administration Data Server group or the Administration Client group.
- Step 2** In the Menu selection box, select **Tools > Bulk Configuration**.
- Step 3** From the submenu selection list, select **Insert** if you need to insert data or **Edit** if you need to edit.
- Step 4** In the next menu selection list, select the type of table with which you need to work.
- 

## Bulk Configure Data

From the Bulk Configuration menu, you can choose to create or update records in the database tables.

Start by selecting the **Bulk Configuration Insert** or **Edit** menu. Then select the database table you want to modify.



---

**Note** If you have any questions, refer to the online help. The help contains table record and field definitions and procedures for all that you can do with the Bulk Configuration tool.

The following sections briefly describe the tool and how to use it.

---

# Insert and Edit Windows

Depending on whether you select **Bulk Configuration Insert** or **Edit**, the Bulk Configuration Insert or Edit window for the selected database table opens.

These two windows have the following features:

- *Same Options*

Both windows have the same options except for Insert (Insert window) and Retrieve (Edit window).




---

**Note** The reason for having both an Insert and an Edit window is to prevent confusion when editing records since some configuration objects can only be edited when inserted into the database, the database being a relational one. For example, when you insert the record of a label, you can edit all its fields. However, after you define its routing client (and save it in the database), the only way you can redefine the routing client is by deleting the label and creating a new one.

---

- *Saving Changes*

The changes you make in the Insert or Edit window are not applied to the database until you click **Save** or **Close**. The **Close** button closes the window and allows you to save or cancel database changes.

- *Initial Display*

Initially, both windows open without data and wait for your retrieval command (in the Edit window) or insert/import command (in the Insert window).

- *Editable Data Table Fields*

Columns with an asterisk (\*) next to the title indicate required fields. You cannot directly modify fields shaded in **blue**. However, in some cases setting or changing one field makes another field updateable.

- *Record State*

The first data column contains a symbol indicating the condition of a row's record.

Symbol	Indicates the record is
	<i>Not changed</i> since you retrieved the record or saved it.
	<i>Changed</i> in the current editing session but not yet saved.
	<i>To be inserted</i> into the database when you save your edits.
	<i>To be deleted</i> from the database when you save your edits.

# Multiple Record Configuration

In some cases, you might need to work with multiple records of configuration data simultaneously.

For example, you might want to:

- Import records from a text file
- Modify a specific field in multiple records
- Insert a set of records

This chapter shows you how to use the Configuration Manager Bulk Configuration tool to insert and update multiple configuration records in a single transaction from a single screen.

The Bulk Configuration tool lets you perform these operations on several Unified Intelligent Contact Management (Unified ICM) data tables simultaneously. This tool supplements the Configuration Manager Explorer and List tools, which allow you to insert and update single records.



---

**Note** Refer to the Bulk Configuration tool's online help for detailed information.

---

## Bulk Configuration Features

You can do the following with the Bulk Configuration tool:

- Retrieve records from the database (Edit window only)
- Sort records by a single column or by multiple columns
- Use the search tool to find data in a list of records
- Apply a single value to a range of fields or apply a range of values to a range of fields
- Insert additional new rows (records) into the database table (Insert Window only)
- Import multiple record data (either whole records or record fields)
- Export multiple record data (either whole records or record fields)
- Set or change security settings to multiple records at a time
- Delete records. After deletions are saved to the database (or after you close your editing session), you can no longer undelete deleted records.
- Undelete records that are marked for deletion in the current editing session

The following sections describe how to use the Bulk Configuration tool.

### Record retrieval from database

Use the *Select filter data* box in the Edit window to retrieve records from the database.

### Edit Existing Records

To retrieve and edit existing records, follow these steps:

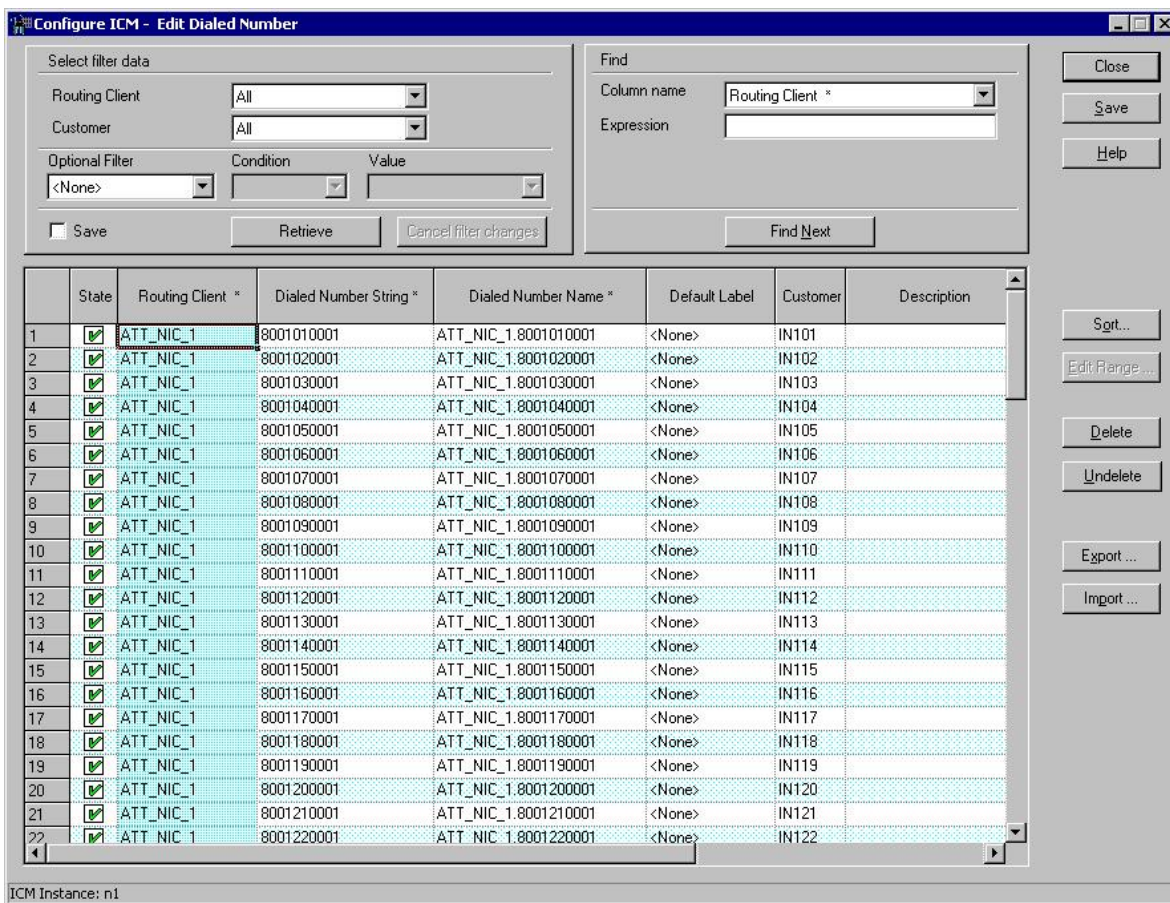
**Step 1** Within the **Bulk Configuration > Edit** menu, select the name of the database table you want to modify. The appropriate Edit window appears. (Initially, no records are shown.)

**Step 2** Do one of the following:

- To retrieve a range of records, specify values in the **Select filter data** fields. For example, you could enter values that would retrieve only dialed numbers associated with a specific customer, with a specific routing client, or both.
- To retrieve all records, leave the Customer and Routing Client fields set to **All**.

**Step 3** Click **Retrieve**. The appropriate rows are displayed in the Edit window as in the following example.

*Figure 1: Example Bulk Configuration Edit Window*



**Step 4** After you retrieve the records you want to edit, you can edit individual records or a range of records. In a range of records, you can enter a range of values or the same value. You can also delete, import, export, and sort records.

## Sorting Records

You can sort records (rows) in two ways: by one column or by multiple columns.

You might want to sort by multiple columns if the first column(s) to sort by has the same value in more than one field, for example, the same routing client, label, or customer name.

- To sort records by one column: double-click that column's header. To reverse the sort, double-click a second time. When you double-click, an A (Ascending) or D (Descending) appears after the header to indicate the sort order.
- To sort records by multiple columns, see the following procedure.

## Sort Records by Multiple Columns

---

**Step 1** In the Insert or Edit window, click **Sort**. The Sort dialog displays.

**Step 2** In the *Columns available for sort* list, select each column by which you want to sort and click **Add**.

The primary sorting column will be the first column listed in the Columns selected for sort list. To change the column sort order, select a column and click the up or down arrow.

The data within each column is sorted in Ascending order unless you deselect the check box beside the column.

**Step 3** Click **OK**.

---

## Specific Records Within a Set

After you have retrieved a set of records, you can use the Find area of the Edit window (Column Name and Expression fields) to search for specific records within the set.

### Find Data in a List of Records

To find data in a list of records, follow these steps:

---

**Step 1** In the Find box of the Edit or *Insert* window, select the database column in which you want to search for data.

**Note** You can also select a column by clicking in that column.

**Step 2** In the Find box Expression field, enter the value for which you want to search. You can enter a full value or a sub-string.

**Step 3** Click **Find Next** to locate the first record that matches the search criteria. The first row that contains the specified expression in the selected column is highlighted.

---

## Select Data

You can select whole records for importing, exporting, setting security, deleting, or undeleting. Or, you can select the same field in multiple records for simultaneous editing.

### Select Records

Click in the left-most numbered field in a row to select that row and highlight it. Click in any other field in a row to select the row but not highlight it.

## Select One Field in Multiple Records

You can select one edit-control field (when there is no section box in the field) in multiple records in any of the following three ways:

- Click the field where you want to start and, keeping the left mouse button held down, move the cursor to the last field.
- Click the field where you want to start. While holding down the **Shift** key, click the last field.
- Click the field where you want to start. While holding down the **Shift** key, click the down arrow to select.
- Press **Ctrl**, then click on each field you wish to select. This allows you to select a discontinuous group of fields.

## Edit Range of Data

You can edit a range of data in a table column in three ways:

### Procedure

- Apply a single value to a range of edit-control fields
- Apply a single value to a range of selection-box fields
- Apply a range of values to a range of fields

## Apply a Single Value to a Range of Edit-Control Fields

An *edit-control field* is one you can edit that does not contain a selection box.

To apply a single value to a range of edit-control fields:

- 
- Step 1** Make your selection: click the field where you want the range to start and, keeping the left mouse button held down, move the cursor to the last field in the range.
  - Step 2** Type the new entry that you want to appear in all the fields.
  - Step 3** Click **Enter** or **Tab**. This applies the change to all the records in the range and moves the focus to the next data field.
- 

## Apply a Single Value to a Range of Selection-Box Fields

To apply a single value to a range of selection-box fields:

- 
- Step 1** Select the first field where you want the range to start.
  - Step 2** Press the **Shift** key and hold it down for steps 3, 4, and 5.
  - Step 3** Click the selection-box down arrow but keep the left mouse button held down and select the fields you want in the range.
  - Step 4** Click the last field in the selection to display the selection list. You can also open the selection box by pressing **Alt** + an arrow key.
  - Step 5** Click your selection.

- Step 6** Click **Enter** or **Tab** (or any other field). This applies the change to all the records and moves the focus to the next data field.

## Apply a Range of Values to a Range of Fields in a Column

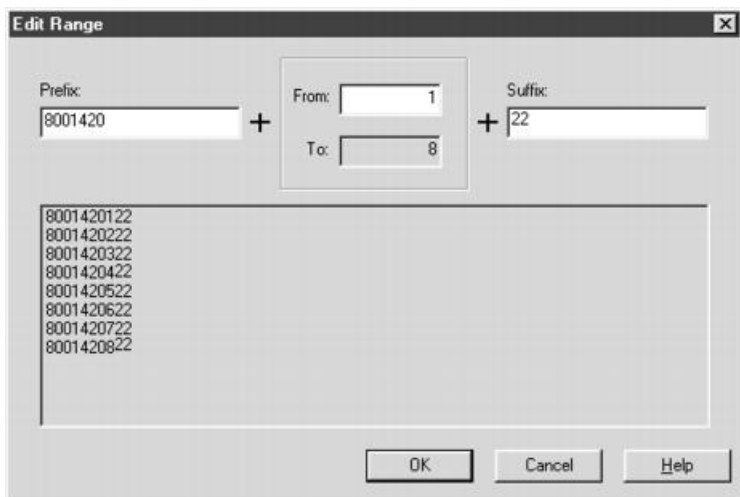
To apply a range of values to a range of fields in a column:

- Step 1** Select the range of fields in a database column. This enables the **Edit Range** button.

**Note** The **Edit Range** button does not work for selection-box fields.

- Step 2** Click **Edit Range**. The Edit Range dialog displays.

*Figure 2: Edit Range Dialog Box*



- Step 3** In the Edit Range From field, enter the first number of the range.

- Step 4** In the Prefix and Suffix fields, you can optionally enter substrings to appear before or after each value. The Edit Range dialog lists the generated values.

**Note** When entering a numeric range, you may also enter leading zeros to ensure proper alignment (that is, 001 to 999).

- Step 5** Click **OK**. This applies the changes to the fields you selected in the Insert or Edit window.

## Remove a Domain Name from Supervisor Usernames

In Release 11.5, the SSO feature added a requirement that supervisor usernames use UPN-based or SAM-based format. Non-SSO solutions also had to follow this requirement. Supervisors could no longer sign in with an unqualified username.

With the addition of the **Default domain name** option on the **System Information** dialog, non-SSO solutions can revert to using unqualified usernames for supervisor sign-ins. To do so, you assign a **Default domain**

**name** and use the **Bulk Configuration** tool to remove the domain name that is in `LoginName` on the `Person` table.

**Step 1** Set a **Default domain name**:

- a) Open the Configuration Manager's **System Information** dialog and set a **Default domain name**.
- b) Save your change.

**Step 2** Create a text file to use in the **Bulk Configuration** tool:

- a) Create a text file.
- b) Insert the following header to identify the Table and Columns in the file:

```
__TABLE
Person
__COLUMNS
```

**Step 3** Query the Administration & Data Server to find the supervisors with domain names in their `LoginName`:

- a) Use SQL Server Management Studio to connect to the Administration & Data Server.
- b) Select the AWDB and run the following query with **Results to Grid**:

```
DECLARE @DomainName AS varchar(190);
SET @DomainName = 'yourDomain.com';

SELECT P.PersonID, P.FirstName AS 'FirstName', P.LastName as 'LastName',
REPLACE(P.LoginName, '@'+@DomainName, '') AS 'LoginName', '0' as 'SSOEnabled'
FROM Person P
JOIN Agent A on (P.PersonID = A.PersonID)
WHERE A.SupervisorAgent = 'Y'
AND P.SSOEnabled = '1'
AND P.LoginName like '%'+@DomainName+'%'
```

Where *yourDomain.com* is the domain name that is currently part of the `LoginName`.

- c) Select all the results and select **Copy with Headers** from the context menu.
- d) Paste the results into your text file.

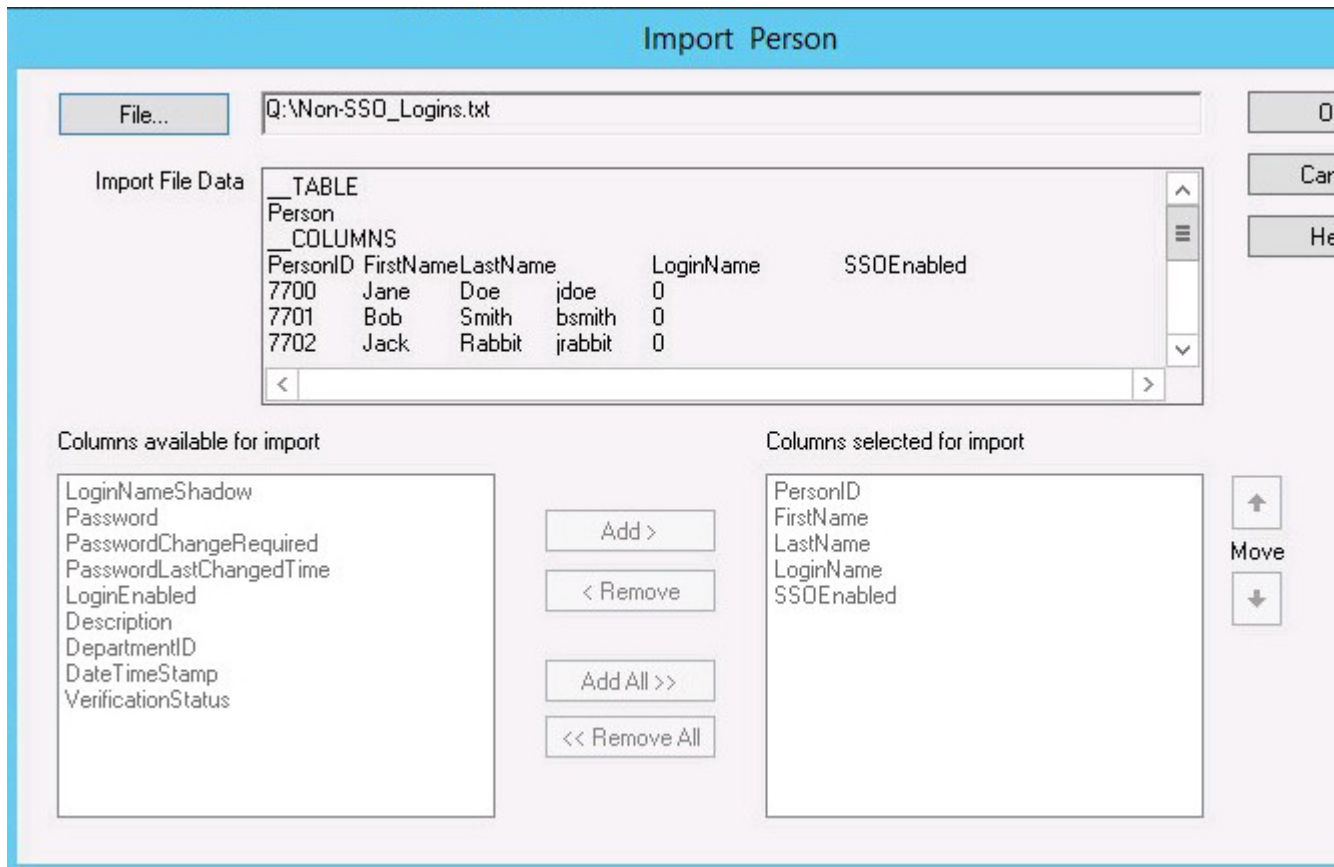
**Step 4** Verify that the query retrieved the correct records and save the file.

**Note** The column values must be Tab-delimited.

**Step 5** Use the text file to edit the AWDB with the **Bulk Configuration** tool:

- a) Open the **Configuration Manager** on the Administration & Data Server.
- b) Select **Tools > Bulk Configuration > Edit > Person Bulk Edit**.
- c) Select **Retrieve**.
- d) Select **Import...** and open your text file.
- e) In the **Import Person** dialog, ensure that the five columns are selected for import, as shown:





**Import Person**

File... Q:\Non-SSO\_Logins.txt

Import File Data

_TABLE				
Person				
_COLUMNS				
PersonID	FirstName	LastName	LoginName	SSOEnabled
7700	Jane	Doe	jdoe	0
7701	Bob	Smith	bsmith	0
7702	Jack	Rabbit	jrabbit	0

Columns available for import

- LoginNameShadow
- Password
- PasswordChangeRequired
- PasswordLastChangedTime
- LoginEnabled
- Description
- DepartmentID
- DateTimeStamp
- VerificationStatus

Columns selected for import

- PersonID
- FirstName
- LastName
- LoginName
- SSOEnabled

Buttons: Add >, < Remove, Add All >>, << Remove All

Move: ↑, ↓

f) Click **OK** to import the data.

**Step 6** In the **Person Bulk (Edit)** dialog, verify the edits and save your work.

## Add New Records

You can add records by inserting multiple blank rows (records) and filling in the data or by importing the data.

You can also edit the data you insert when you insert it.

### Insert New Records

To insert a new record:

- Step 1** In the **Bulk Configuration > Insert** menu, select the name of the data table to which you want to add records. The appropriate Insert window opens, automatically displaying one new row.
- Step 2** To create additional rows, enter the number of additional rows in the Quantity field and click **Insert**. The additional rows are added in the Insert window.
- Step 3** Enter the data in the rows:

- a) If you want to edit individual fields in the new rows, type the information you want in each of the fields and skip to Step 8.
- b) If you want to edit a column in multiple rows so that a range of values is entered, continue to Step 4.

**Note** For other ways of entering data into multiple rows, see [Edit Range of Data, on page 6](#)

**Step 4** Select the rows in the column you want to modify.

**Step 5** Click **Edit Range**. The Edit Range dialog appears.

**Step 6** Enter a prefix (optional), the start value for the range, and a suffix (optional). The generated values are listed in the dialog.

**Step 7** Click **OK** to close the Edit Range dialog and apply the values to the column you selected.

**Step 8** When you have finished setting fields in the new rows, press **Enter** to apply your changes to the Unified CCE database.

**Note** You can leave empty rows, the system ignores them. No changes are made to the database until you press **Enter**.

## Import Data

You can import data from a specified text file into the opened database table. You can import whole records or only columns of data if the data matches (see Step 3 of the following procedure). The process cancels if any error occurs during the import process.

**Step 1** In the Insert or Edit window, click **Import**.

**Step 2** In the Import dialog, click **File**.

**Step 3** In the File Open dialog, select the file containing the data that you want to import and click **Open**.

The Import File Data area displays the first few lines of the opened file.

- When importing data in the Edit mode, the following rules apply:
  - The Bulk Configuration tool reads only those records whose primary key values match those of records in the Edit window.
 

If a record does not match the primary key value, the record is considered to be an error and a message box with the primary key value pops up to ask you to correct the problem.
  - If any field in the import record is null, the corresponding field value in the grid window become blank for an edit cell or uses the default value for a drop-down list cell.
  - If any field is missing in the import file, the corresponding field in the Edit window remains unchanged.
  - If there is a larger number of records in the file to be imported than the number of rows in the grid, it is considered an error and a message box pops up asking you to correct it.
  - If there is a duplicated primary key in the file to be imported, it is considered an error and a message box with the duplicated primary key value pops up asking you to correct it.
  - After importing, all records imported (including records marked for deletion in the grid) are marked as “Changed” regardless of whether the value is changed or not.
  - After importing, the records display in index order (ordered by logical keys). If you did not sort before importing, the order appears the same after the import.

- When importing data in the Insert mode, the following rules apply:
    - Only a single import is supported and any existing rows are removed from the grid. When you click **Import**, the following message box pops up if there is any record in the grid:
 

All the existing data will be replaced by the data to be imported. If you want to retain the current data on the grid please click the Cancel button then save or export the existing data. Click the OK button to proceed with the importing.
    - After importing, all rows are marked as “New” and the ordering is the same as that in the file imported from.
    - In the Import Insert mode, the tool reads only those records whose primary key values are not presented. If the primary key field is selected for file to be imported, it is considered an error and a message box with the primary key field name pops up asking you to correct the problem.
    - If any field in the import record is null, the corresponding field value in the grid window becomes blank for an edit cell or uses the default value for a drop-down list cell.
- Note** If headers are included in the imported file, the **Add** and **Remove** buttons are not enabled and you can only import the records as a whole. In that case, skip to Step 6.

- Step 4** If the imported data does not contain headers, in the Available Fields list box, select the names of the fields to import that match the data and click **Add**.
- Step 5** To change the order of the columns, select a column and move it within the list by clicking **Up** or **Down**.
- Step 6** Click **OK**. The data is imported into the data table.

## Data File Format

The import and export files used by the Bulk Configuration tool can optionally include a header that identifies the table and columns in the file. The header is followed by one line for each row of data.

The following rules apply to file headers:

- A line beginning with a number sign (#) is a comment and is ignored.
- Blank lines are also ignored.
- The header content is indicated by a line beginning with two underline characters and the word **TABLE** or **COLUMNS**. The following line contains the name of the table or the name of the columns. For example:

```

__TABLE
Call_Type __
COLUMNS
CallTypeID EnterpriseName Description Deleted CustomerDefinitionID

```

- All column names must be on a single line and are separated by Tab characters.

The following rules apply to the data in the files:

- One row of table data per line.

- Column values must be in the same order in all rows. If columns are specified in the header, the columns in the data rows must be in the same order.
- Column values are separated by a single Tab character.
- Fields intentionally left blank must be represented by two adjacent Tab characters or a Tab character at the end of a line. On import, the default value is used for such a value.
- String values may include spaces.
- An error occurs on import if a line contains too few or too many values.




---

**Note** A simple way to create the import file with a valid format is to use Excel and save the file as Text (Tab delimited) (\*.TXT).

---

## Export Function

The export function saves the selected records or fields to a tab-delimited text file that you can import into the Unified ICM database or into a database tool such as Microsoft Excel. If any error occurs during the export process, the process is cancelled.

## Export Data

To export data, follow these steps:

- 
- Step 1** Select the rows with fields you want to export.
- Note** If you intend to import this data into the Edit window, you must export a primary key field along with any other fields. The primary key field has the same column name as the database table name.
- Note** All rows selected (including records marked for deletion) are exported.
- Step 2** Click **Export**.
- Step 3** Select the Header option if you want to include a header containing the table name and column names in the output file. Including the header clarifies the content of the file.
- Step 4** In the Export dialog, select the columns you want to export and click **Add** or **AddAll**.
- Step 5** To change the order of the columns to export, select one of them and move it within the list by clicking **Up** or **Down**.
- Step 6** Click **File** and specify the file name and directory to which to save the data.
- Step 7** Click **OK**.
- 

## Record deletion and undeletion

You can delete one or more records at a time and you can undelete records marked for deletion.

## Delete a Record

To delete records, follow these steps:

---

**Step 1** Select the rows to be deleted.

**Note** Selecting a range of fields in a column selects all the rows those fields belong to.

**Step 2** Click **Delete**. The selected rows are marked for deletion.

**Step 3** Click **Save**. The rows marked for deletion are deleted from the database.

---



---

**Note** You can no longer undelete records marked for deletion after you save your changes to the database.

---

## Undelete a Record

To undelete a record:

---

**Step 1** Select the rows marked for deletion.

**Step 2** Click **Undelete**. The deletion mark is removed from the records.

**Step 3** Click **Save**. The change is saved to the database.

---

