



Appendix B: QCT Utilities

This appendix describes QCT utilities.

QCT utilities allow you to perform the following operations:

- [Uploading Saved Configurations, page 97](#)
- [Configuring QCT Options, page 99](#)

Uploading Saved Configurations

QCT allows you to upload previously-saved router configurations. Using QCT, you can browse to a locally-stored router configuration file on your PC and download it to any router.

To upload a saved configuration to your router, perform the following steps.

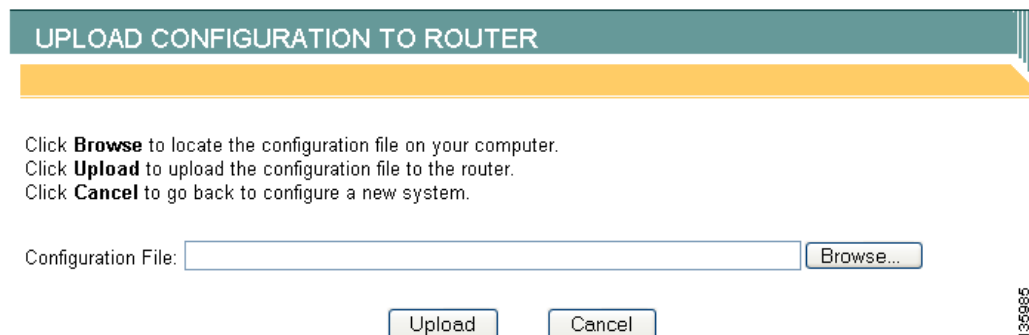
Step 1 Click **Upload Saved Config** (see [Figure 149](#)):

Figure 149 Upload Saved Config Button



The Upload Configuration to Router window appears (see [Figure 150](#)):

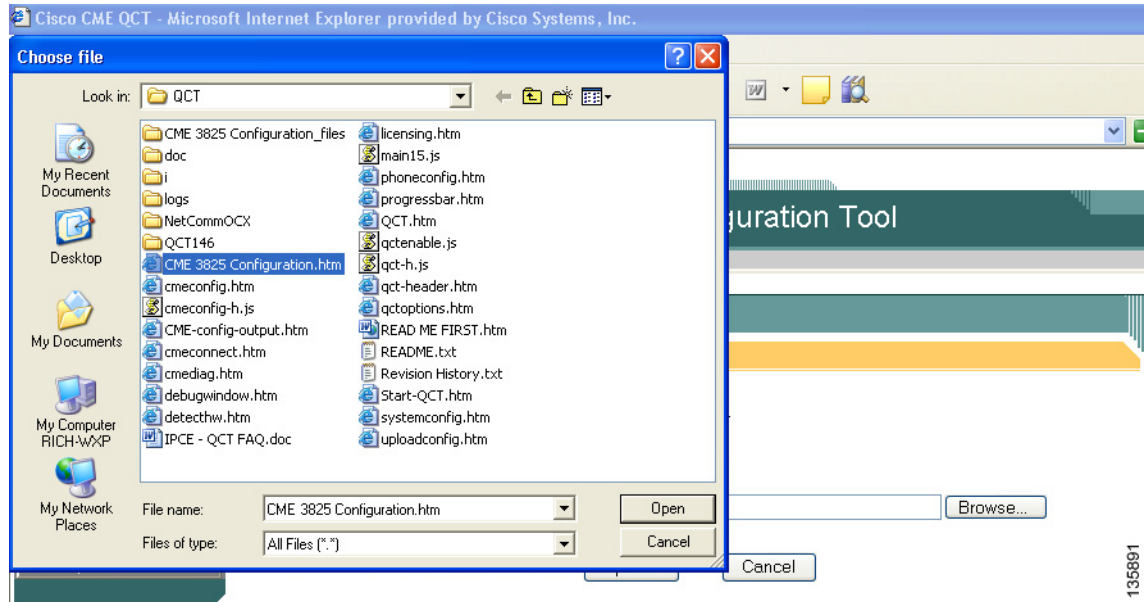
Figure 150 Upload Configuration Window



Step 2 Click **Browse** to locate the configuration file on your PC.

- Step 3** In the Choose File dialog that appears, browse to the file's location on your PC and select the configuration file (see [Figure 151](#)):

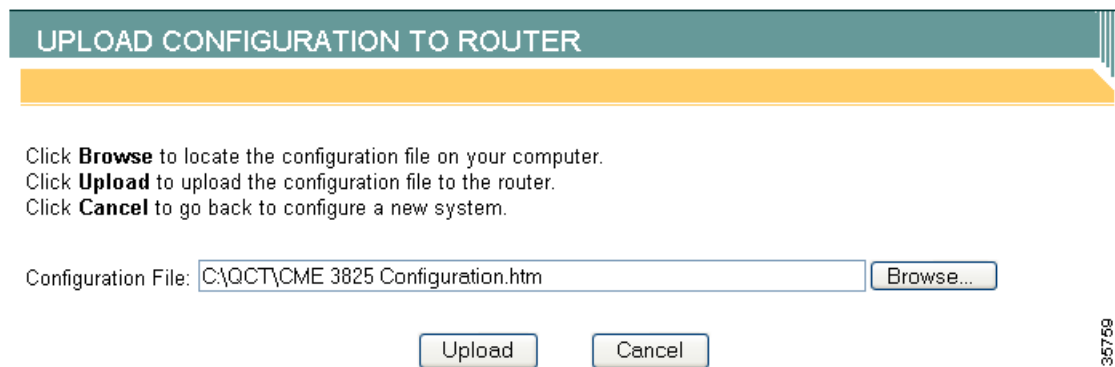
Figure 151 Upload Choose File Dialog



- Step 4** Click **Open**.

The Configuration File field in the Upload Configuration to Router window's shows the file path that you chose (see [Figure 152](#)):

Figure 152 Upload Configuration File Path



- Step 5** Ensure that your router is powered on.

- Step 6** Click **Upload**.

Your router loads with the new configuration.

Configuring QCT Options

The QCT Options window allows you to enable specific diagnostics for your system.



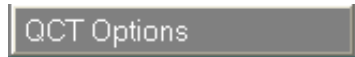
Note

Any enabled QCT option will be valid only until you create a new system.

Perform the following steps to configure QCT options.

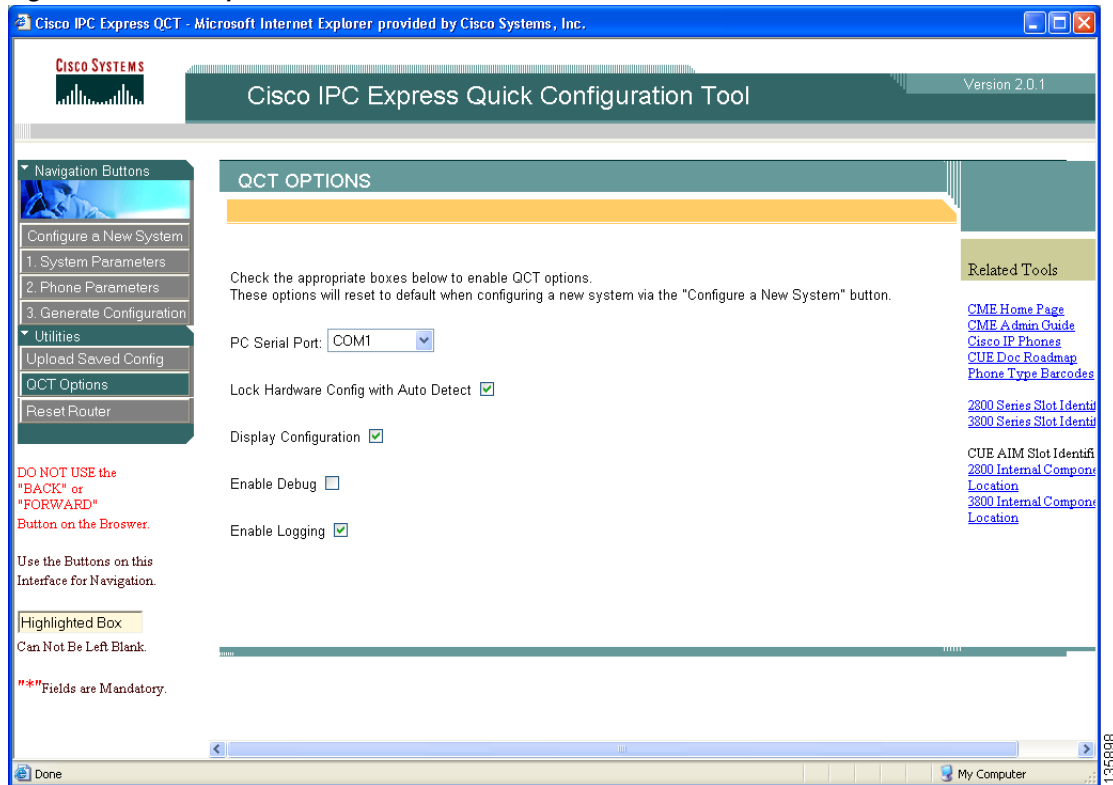
Step 1 Click the **QCT Options** button (see [Figure 153](#)):

Figure 153 QCT Options Button



The QCT Options window appears (see [Figure 154](#)):

Figure 154 QCT Option Window



Step 2 Enter the information listed in [Table 9](#).

Table 9 Cisco QCT Options Field Descriptions

Field Name	Enter or Specify	Purpose
PC Serial Port	The PC serial COM port from the drop-down menu.	Allows communications to Cisco IPC Communications Express system.
Lock Hardware Configuration with Auto Detect	<ul style="list-style-type: none"> To enable any QCT option, enter a check in the appropriate check box. To leave any QCT option disabled, leave the appropriate check box blank. 	After auto-detecting hardware using the Auto Detect Hardware Configuration button, deselecting this checkbox allows changes to the Hardware Configuration section on the System Parameters window.
Display Configuration		Enables the display of the configuration on your PC when the Generate Configuration button is pressed.
Enable Debug		Enables debugging after pushing configuration to router.
Enable Logging		Enables logging after pushing configuration to router. Log information is stored in a folder named logs inside your locally installed QCT folder (see Figure 155).

Figure 155 Logs Folder

Name	Size	Type	Date Modified
doc		File Folder	7/15/2005 12:51 PM
i		File Folder	7/15/2005 12:51 PM
logs		File Folder	7/8/2005 8:18 AM
NetCommOCX		File Folder	7/15/2005 12:51 PM
READ ME FIRST_files		File Folder	7/15/2005 12:51 PM
cmeconfig.htm	120 KB	HTML Document	7/15/2005 11:32 AM
cmeconfig-h.js	12 KB	JScript Script File	7/8/2005 3:21 PM
CME-config-output.htm	1 KB	HTML Document	6/3/2005 3:45 PM
cmeconnect.htm	19 KB	HTML Document	6/14/2005 11:40 AM
debugwindow.htm	1 KB	HTML Document	7/6/2005 4:09 PM
detecthw.htm	66 KB	HTML Document	7/13/2005 4:50 PM
IPCE - QCT FAQ.doc	57 KB	Microsoft Word Doc...	6/23/2005 11:03 AM
licensing.htm	19 KB	HTML Document	7/12/2005 1:41 PM
phoneconfig.htm	41 KB	HTML Document	7/11/2005 10:18 AM
progressbar.htm	3 KB	HTML Document	7/6/2005 5:13 PM
QCT.htm	2 KB	HTML Document	7/12/2005 1:41 PM
qctenable.js	1 KB	JScript Script File	7/15/2005 12:57 PM
qct-h.js	3 KB	JScript Script File	7/7/2005 10:56 AM
qct-header.htm	15 KB	HTML Document	7/15/2005 10:18 AM
qctoptions.htm	21 KB	HTML Document	7/7/2005 3:39 PM
qctsystem.htm	1 KB	HTML Document	7/5/2005 3:58 PM
READ ME FIRST.htm	49 KB	HTML Document	7/11/2005 4:03 PM
Revision History.txt	4 KB	Text Document	7/14/2005 6:41 PM
systemconfig.htm	128 KB	HTML Document	7/15/2005 11:40 AM

136767