



CHAPTER 1

Overview and Scripts

Revised: August 10, 2011, OL-25003-01

Introduction

This chapter provides an overview of BTS provisioning and tools. Before provisioning:

- Plan your network configuration using a detailed network diagram.
- Set up your system hardware and install all required software. For more information, refer to:
 - Cisco BTS 10200 Softswitch Cabling Procedures
 - Cisco BTS 10200 Softswitch Application Installation
 - Cisco BTS 10200 Softswitch Release 6.0 Jumpstart Server Set Up and Procedures

Interfacing with the BTS

The BTS Element Management System (EMS) has many major operator interfaces available:

- The network management system (NMS) receives events and alarms from the EMS and establishes reporting thresholds and traffic monitoring management into the EMS using the Simple Network Management Protocol (SNMP).
- The remote operator console connects to the EMS via SSH.
- The billing mediation devices connect to the Bulk Data Management System (BDMS) through Simple File Transfer Protocol (SFTP).
- The provisioning server connects to the BTS through the Common Object Request Broker Architecture (CORBA), SOAP, and PacketCable Subscriber Provisioning (PSCP) interfaces.
- Bulk provisioning connects to the EMS through an SFTP over SSH. The EMS manages these interfaces and forwards information to external devices over Telnet/SSH, SFTP.

Secure Shell

Secure shell (SSH) is the default method of access to the BTS command-line interface (CLI). SSH provides encrypted communication between a remote machine and the EM or Call Agent (CA) for executing CLI commands. The SSH server runs on the EMSs and CAs of the BTS. To connect, the client and server sides must run the secure shell daemon (SSHD).

The SSHD runs as a Solaris daemon process. It is automatically started when the Solaris is brought up, but if it dies, it must be manually restarted. A single unique instance of the SSHD runs on every component of the BTS.

SSH is an optional login choice. Use the BTS default application installation option to enable SSH and to disable RSH, REMSH, RLOGIN, Telnet, or REXEC. FTP is not affected. If SSH is not selected, then RSH, REMSH, RLOGIN, Telnet, or REXEC are enabled and FTP is still not affected.

If SSH is enabled, new users are prompted to enter a new password and reenter that password during their first login. From that point, they are prompted once for a password only.

To log in from the client side, enter the following:

```
ssh -l username IPaddress
```

On the first SSH login from the client side, expect a message similar to this:

```
The authenticity of host [hostname] can't be established.
Key fingerprint is 1024 5f:a0:0b:65:d3:82:df:ab:42:62:6d:98:9c:fe:e9:52.
Are you sure you want to continue connecting (yes/no)?
```

Enter **yes** and press **Enter**.

The password prompt appears. From this point on, all communications are encrypted.

Subsequent SSH logins prompt only for a password.

Activating SSH Versions 1 and 2

SSH version 2 is the default SSH version. However, systems such as CALEA can use SSH version 1. The following procedure allows you to activate SSH version 1 so that the BTS supports both versions 1 and 2.

Step 1 Use a text editor to open `/opt/BTSossh/etc/sshd_config` and change “Version 2” to “Version 2,1”.

Step 2 At the command prompt, enter:

```
/etc/init.d/sshd down
```

Step 3 Enter:

```
/etc/init.d/sshd start
```

Provisioning Paths

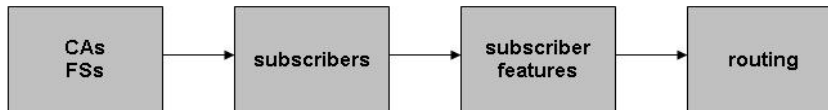
Refer to the *Cisco BTS 10200 Softswitch System Description* for BTS architecture, components, and features.

The order of provisioning varies depending on your configuration. However, some tasks must be performed before others. The following shows the recommended provisioning sequence:

1. CAs and FSs

2. Subscribers
3. Subscriber features
4. Routing

Figure 1-1 *BTS Order of Provisioning*



The EMS database interfaces internally with the CA and Feature Server (FS) using the Java Message Service (JMS) protocol over IP protocol. The BTS uses Oracle to provide database applications. Oracle is flexible and scalable and has its own keep-alive and heartbeat checks for replication.

The BTS provides two provisioning paths:

- OSS-EMS—This interface is used by external (CORBA, SOAP, PCSP) provisioning applications. PCSP is limited to 1-20 sessions per individual user, with the default being 10
- EMS-CA/FS—The EMS database holds up to 100 operator logins, and a maximum of 16 user sessions can be active at one time.

Once the provisioned data enters the EMS, the following occurs:

- The data is placed in the Oracle database tables, which are replicated to the standby system.
- A copy of the data is placed in a queue to be forwarded to the CA/FS.
- From the queue, data is sent to the appropriate component, either the CA or the FS.
- Once the component acknowledges receipt of the data, the EMS deletes the data from the queue. You can audit the database on the CA/FS to ensure that it matches the database on the EMS. A full audit of the database reads every field to ensure that a match exists.

The IDX DB (shared memory) on the CA/FS maintains only the real-time data needed for expedited call processing. Data is replicated to the standby system.

Provisioning and replication paths are fully redundant, eliminating any single point of failure during failover and support:

- Database synchronization and redundancy on all OSS-EMS and EMS-CA/FS paths
- Provisioning and replication paths for normal conditions and for alternate configuration
- Recovery mechanisms in case of abnormal conditions

The Operations, Administration, Maintenance, and Provisioning (OAM&P) element of the BTS provides an asynchronous provisioning mechanism. A provisioning request initiated by a user on an external interface, such as CLI, is added into the database on the Element Management System (EMS), and a response is sent to the user indicating success or failure. This response indicates that the transaction has been committed to the database on the EMS and has been added to the Transaction Queue table. An indication of success does not guarantee successful execution of the transaction on the CA or FS.

Control and status commands are executed independently of provisioning commands and use different paths to the CA. Control commands are queued with provisioning commands and ensure execution of the control command after all provisioning commands issued prior to it are executed. The flag,

wait=Y/N, is added to all control and status commands to indicate whether control/status commands should be queued or not. If the flag is set to Y, control and status commands are queued. The default flag is set to N.

The following command controls the media gateway in service after all provisioning commands preceding this command have executed:

```
control mgw id=ubr.100; target-state=INS; mode=GRACEFUL; wait=y;
```

Issue the following command to verify the status of the media gateway:

```
status mgw id=ubr.100; wait=y;
```

The BTS has the ability to refine the CLI command show transaction-queue to display transactions according to their state. The following command shows all transactions in the transaction queue that have a status of pending:

```
show transaction-queue status=pending;
```

Bulk Provisioning

Prepare batch files, calledscripts. Forward scripts using SFTP to the EMS. Execute those files at the EMS.



Tip

Intersperse the **show transaction-queue** command during large provisioning to ensure commands have been performed before proceeding with further commands.

-
- Step 1** Connect to the EMS using SFTP.
 - Step 2** Go to the /opt/ems/ftp/deposit directory.
 - Step 3** Upload a script file.
This directory is checked every 20 seconds for script files. Each file is processed line by line as a series of separate commands and deleted when it is finished executing.
 - Step 4** Go here to review the report file: <https://ems<MachineName or IP address>>.
-

Executing Scripts

When you order a BTS, a complete script file is created and delivered in both hard and soft copies. Modify this script or create additional scripts using ASCII.

A script has a maximum of 10,000 command lines. Have separate scripts, one for provisioning and one for status and control. Otherwise, the BTS might try to control a trunk group, trunk, or termination in services that have not yet been provisioned in the system.



Tip

Use many smaller scripts instead of one large script to avoid complications that might result in frequent switchovers.

-
- Step 1** Establish a secure Telnet session to the EMS.
- Step 2** Log in as root.
- Step 3** Go to the directory with the bulk provisioning file; for example, filename.txt in the opt/ems/ftp/scripts directory.
- Step 4** Copy the file to the deposit directory; for example, cp filename.txt opt/ems/ftp/deposit.
The system executes the script. When the script is complete, a report is created.
- Step 5** To view the report, open an Internet browser and go to <https://ems<MachineName or IP address>>.
The following information is captured in the report file:
- Owner of the file that was executed.
 - Start-time and end-time.
 - Errors during command execution. This includes the line number, in the original script, of the command that failed, the time that this command failed, and a description of the error.
 - Summary containing the number of successful lines and the number of commands containing errors.
-

**Note**

When errors occur, the script logs the errors and continues to run until it reaches 3000 errors.

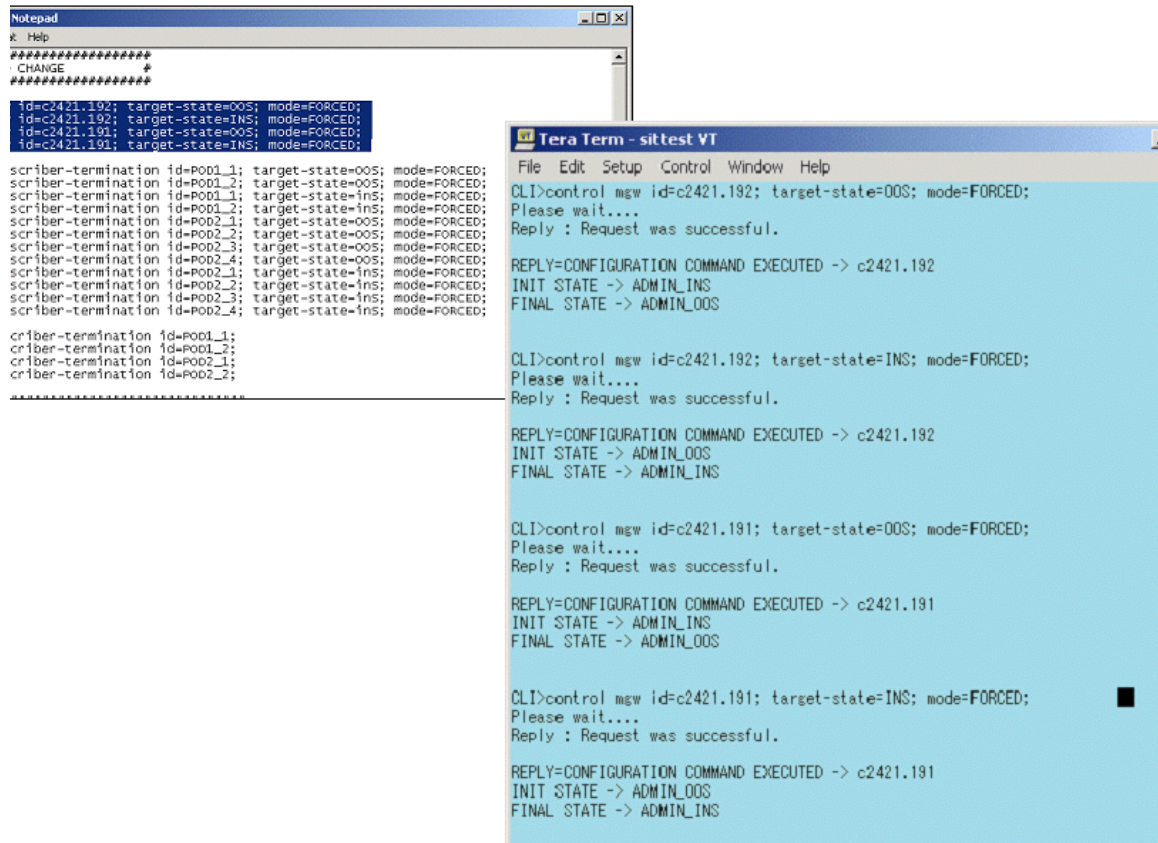
To confirm that a bulk provisioning script has executed, verify the system has generated an output file by going to <https://ems<MachineName or IP address>>.

All command information is stored in the activity log. To access it use the **show activity-summary** CLI command.

Copy and Paste Provisioning

Figure 1-2 illustrates copy and paste provisioning, executed by copying commands from a text file into the system at the CLI prompt. No report generates, but all command information is stored in the activity log.

Figure 1-2 Copy and Paste Provisioning



Factory-Installed Scripts

The features in [Table 1-1](#) are preprovisioned during installation. Note that the feature-server-id token is replaced with the actual FS ID.

Table 1-1 Factory Installed Feature Scripts

| Feature Name | Provisioning Script |
|-----------------------------------|---|
| Anonymous Call Rejection | add feature fname=ACR; tdp1=TERMINATION_ATTEMPT; tid1=TERMINATION_ATTEMPT; ttype1=R; description=Anonymous Call Rejection; feature_server_id=FSPTC719; |
| Call Forwarding Busy | add feature fname=CFB; tdp1=T_BUSY; tdp2=COLLECTED_INFORMATION; tid1=T_BUSY; tid2=VERTICAL_SERVICE_CODE; ttype1=R; fname1=CFBVA; fname2=CFBVD; description=Call Forwarding Busy; feature_server_id=FSPTC719; |
| Call Forwarding Busy Activation | add feature fname=CFBVA; vsc=*90; tdp1=COLLECTED_INFORMATION; tid1=VERTICAL_SERVICE_CODE; ttype1=R; type1=INTL; value1=Y; description=Call Forwarding Busy Activation; feature_server_id=FSPTC719; |
| Call Forwarding Busy Deactivation | add feature fname=CFBVD; vsc=*91; tdp1=COLLECTED_INFORMATION; tid1=VERTICAL_SERVICE_CODE; ttype1=R; description=Call Forwarding Busy Deactivation; feature_server_id=FSPTC719; |

Table 1-1 Factory Installed Feature Scripts (continued)

| Feature Name | Provisioning Script |
|--|--|
| Call Forwarding No Answer | add feature fname=CFNA; tdp1=CALL_ACCEPTED; tdp2=COLLECTED_INFORMATION; tid1=CALL_ACCEPTED; tid2=VERTICAL_SERVICE_CODE; ttype1=R; fname1=CFNAVA; fname2=CFNAVD; type1=TO; value1=30; description=Call Forwarding No Answer TO=Timeout; feature_server_id=FSPTC719; |
| Call Forwarding No Answer Activation | add feature fname=CFNAVA; vsc=*92; tdp1=COLLECTED_INFORMATION; tid1=VERTICAL_SERVICE_CODE; ttype1=R; type1=INTL; value1=Y; description=CFNA Variable Activation; feature_server_id=FSPTC719; |
| Call Forwarding No Answer Deactivation | add feature fname=CFNAVD; vsc=*93; tdp1=COLLECTED_INFORMATION; tid1=VERTICAL_SERVICE_CODE; ttype1=R; description=Call Forwarding No Answer Variable Deactivation; feature_server_id=FSPTC719; |
| Call Forwarding Unconditional | add feature fname=CFU; tdp1=TERMINATION_ATEMPT; tdp2=COLLECTED_INFORMATION; tid1=TERMINATION_ATEMPT; tid2=VERTICAL_SERVICE_CODE; ttype1=R; fname1=CFUA; fname2=CFUD; type1=MCF; value1=Y; type2=RR; value2=Y; description=Call Forwarding Unconditional MCF=multiple call forwarding allowed, RR=ring reminder; feature_server_id=FSPTC719; |
| Call Forwarding Unconditional Activation | add feature fname=CFUA; vsc=*72; tdp1=COLLECTED_INFORMATION; tid1=VERTICAL_SERVICE_CODE; ttype1=R; type1=INTL; value1=Y; description=CFU Activation, INTL=CF to international DN allowed; feature_server_id=FSPTC719; |
| Call Forwarding Unconditional Deactivation | add feature fname=CFUD; vsc=*73; tdp1=COLLECTED_INFORMATION; tid1=VERTICAL_SERVICE_CODE; ttype1=R; description=Call Forwarding Unconditional Deactivation; feature_server_id=FSPTC719; |
| Call Hold | add feature fname=CHD; tdp1=O_MID_CALL; tdp2=T_MID_CALL; tid1=O_SWITCH_HOOK_FLASH_IMMEDIATE; tid2=T_SWITCH_HOOK_FLASH_IMMEDIATE; ttype1=R; description=Call Hold; feature_server_id=FSPTC719; |
| Call Transfer | add feature fname=CT; tdp1=O_MID_CALL; tdp2=T_MID_CALL; tid1=O_SWITCH_HOOK_FLASH_IMMEDIATE; tid2=T_SWITCH_HOOK_FLASH_IMMEDIATE; ttype1=R; description=Call Transfer; feature_server_id=FSPTC719; |
| Call Waiting | add feature fname=CW; tdp1=T_BUSY; tid1=T_BUSY; ttype1=R; description=Call Waiting; feature_server_id=FSPTC719; |
| Caller ID with Call Waiting | add feature fname=CIDCW; tdp1=T_BUSY; tid1=T_BUSY; ttype1=R; description=Caller Id with Call Waiting; feature_server_id=FSPTC719; |
| Calling Identity Delivery | add feature fname=CIDS; vsc=*82; tdp1=COLLECTED_INFORMATION; tid1=VERTICAL_SERVICE_CODE; ttype1=R; description=Calling Identity Delivery; feature_server_id=FSPTC719; |
| Calling Name Delivery | add feature fname=CNAM; tdp1=FACILITY_SELECTED_AND_AVAILABLE; tid1=TERMINATION_RESOURCE_AVAILABLE; ttype1=R; description=Calling Name; feature_server_id=FSPTC719; |
| Calling Name Delivery Blocking | add feature fname=CNAB; vsc=*95; tdp1=COLLECTED_INFORMATION; tid1=VERTICAL_SERVICE_CODE; ttype1=R; description=Calling Name Delivery Blocking; feature_server_id=FSPTC719; |
| Calling Number Delivery | add feature fname=CND; tdp1=FACILITY_SELECTED_AND_AVAILABLE; tid1=TERMINATION_RESOURCE_AVAILABLE; ttype1=R; description=Calling number delivery; feature_server_id=FSPTC719; |

Table 1-1 Factory Installed Feature Scripts (continued)

| Feature Name | Provisioning Script |
|-----------------------------------|---|
| Calling Number Delivery Blocking | add feature fname=CNDB; vsc=*67; tdp1=COLLECTED_INFORMATION; tid1=VERTICAL_SERVICE_CODE; ttype1=R; description=Calling Number Delivery Blocking (toggles the privacy indicator)'; feature_server_id=FSPTC719; |
| Cancel Call Waiting | add feature fname=CCW; vsc=*70; tdp1=COLLECTED_INFORMATION; tid1=VERTICAL_SERVICE_CODE; ttype1=R; description=Cancel Call Waiting; feature_server_id=FSPTC719; |
| Class of Service Screening | add feature fname=COS; tdp1=COLLECTED_INFORMATION; tid1=COS_TRIGGER; ttype1=R; description=Class of service screening; feature_server_id=FSPTC719; |
| Customized Dial Plan | add feature fname=CDP; tdp1=COLLECTED_INFORMATION; tid1=CUSTOMIZE_DIALING_PLAN; ttype1=R; description=Customize Dial Plan; feature_server_id=FSPTC719; |
| Emergency Service | add feature fname=911; tdp1=COLLECTED_INFORMATION; tid1=911_TRIGGER; ttype1=R; description=Emergency Service; feature_server_id=FSPTC719; |
| Incoming SFG | add feature fname=ISFG; tdp1=TERMINATION_ATTEMPT; tid1=TERMINATION_ATTEMPT; ttype1=R; description=Incoming SFG; feature_server_id=FSPTC719; |
| LIDB query | add feature fname=LIDB; tdp1=TERMINATION_ATTEMPT; tid1=CNAM; ttype1=R; description= LIDB query for the CNAM feature; feature_server_id=FSAIN205; |
| Local Number Portability | add feature fname=LNP; tdp1=COLLECTED_INFORMATION; tid1=LNP_TRIGGER; ttype1=R; description=Local Number Portability; feature_server_id=FSAIN519; |
| Outgoing SFG | add feature fname=OSFG; tdp1=ROUTE_SELECTED; tid1=ROUTE_SELECTED; ttype1=R; description=Outgoing SFG; feature_server_id=FSPTC719; |
| Three-Way Call | add feature fname=TCW; tdp1=O_MID_CALL; tdp2=T_MID_CALL; tid1=O_SWITCH_HOOK_FLASH_IMMEDIATE; tid2=T_SWITCH_HOOK_FLASH_IMMEDIATE; ttype1=R; description=Three way call; feature_server_id=FSPTC719; |
| Toll-Free Service | add feature fname=8XX; tdp1=COLLECTED_INFORMATION; tid1=SPECIFIC_DIGIT_STRING; ttype1=R; description=Toll Free Number; feature_server_id=FSAIN519; |
| Usage Sensitive Three-Way Calling | add feature fname=USTWC; tdp1=O_MID_CALL; tdp2=T_MID_CALL; tid1=O_SWITCH_HOOK_FLASH_IMMEDIATE; tid2=T_SWITCH_HOOK_FLASH_IMMEDIATE; ttype1=R; description=Usage Sensitive Three Way Call; feature_server_id=FSPTC719; |

Media Gateway Profile Scripts

This section details media gateway hardware factory-set profiles.

Cisco UBR Profile

The Cisco UBR is used as a residential gateway. The UBR has two terminations.

```
add mgw-profile ID=Ubr1;
VENDOR=Cisco;
SILENT-SUPPRESS-SUPP=Y;
```



```

MGCP-VARIANT=MGCP_0_1;
RBK-ON-CONN-SUPP=N;
PACKET-TYPE=IP;
AAL1=N;
AAL2=N;
AAL5=N;
PVC=N;
SVC=N;
SPVC=N;
EC=N;
MPARTY-CONFERENCE=N;#not used
MPARTY-3WAY=N;#not used
NUM-PER-MPARTY=1;#not used
NUM-OF-MPARTY=1;#not used
LPTIME=10;
HPTIME=20;
ISDN=N;
DTMF=N;
MF=N;
FXO=N;
FXS=N;
FGD=N;
BACKHAUL-TYPE=RUDP;
SDP-ORIGFIELD-UNSUPP=Y;
SDP-SESSNAME-UNSUPP=Y;
SDP-EMAIL-UNSUPP=Y;
SDP-PHONE-UNSUPP=Y;
SDP-URI-UNSUPP=Y;
SDP-BANDWIDTH-UNSUPP=Y;
SDP-INFO-UNSUPP=Y;
SDP-TIME-UNSUPP=Y;
SDP-ATTRIB-UNSUPP=Y;
MGCP-ERQNT-UNSUPP=Y;
MGCP-HAIRPIN-UNSUPP=Y;
MGCP-QLOOP-UNSUPP=Y;
MGCP-3WAY-HSHAKE-UNSUPP=N;
MGCP-CONN-ID-AT-GW-UNSUPP=Y;
MGCP-CMD-SEQ-UNSUPP=Y;
TERMINATION-PREFIX=aaln/;
PORT-START=0;
DESCRIPTION=Cisco UBR;

```

Cisco 2600 Profile

The Cisco 2600 router is used as a residential gateway.

```

add mgw-profile id=Cisco2600;
vendor=Cisco;
packet-type=IP;
mgcp-variant=MGCP_0_1;
aal1=n;
aal2=n;
aal5=n;
pvc=n;
svc=n;
spvc=n;
ec=n;
mparty-3way=n;#not used
mparty-conference=n;#not used
lptime=10;
hptime=20;
silent-suppress-supp=n;
rbk-on-conn-supp=n;

```

```

isdn=n;
dtmf=n;
mf=n;
fxo=n;
fgd=n;
mgcp-erqnt-unsupp=y;
mgcp-hairpin-unsupp=y;
mgcp-cmd-seq-unsupp=y;
description=cisco 2600 residential gateways

# Cisco MC 3810 profile
# The Cisco Multiservice Access Concentrator MC 3810 is used as a residential gateway.
add mgw-profile id=cisco_3810;
vendor=cisco;
packet-type=ip;
mgcp-variant=MGCP_0_1;
aal1=no;
aal2=no;
aal5=no;
pvc=no;
svc=no;
spvc=no;
ec=n;
mparty-3way=n;#not used
mparty-conference=n;#not used
lptime=10;
hptime=20;
silent-suppress-supp=n;
rbk-on-conn-supp=n;
isdn=n;
dtmf=y;
mf=n;
fxo=n;
fgd=n;
mgcp-erqnt-unsupp=y;
mgcp-hairpin-unsupp=y;
mgcp-cmd-seq-unsupp=y;
description=cisco multiservice access concentrator - mc3810

```

Cisco AS5400 Profile

The Cisco AS5400 Media Gateway is used as a trunking gateway as well as an announcement server. The default profile applies to both types of gateways.

```

add mgw-profile id=as5400;
vendor=Cisco;
packet-type=IP;
mgcp-variant=MGCP_0_1;
aal1=n;
aal2=n;
aal5=n;
pvc=n;
svc=n;
spvc=n;
ec=n;
mparty-3way=n; #not used
mparty-conference=n;#NOT USED
lptime=10;
hptime=20;
silent-suppress-supp=n;
rbk-on-conn-supp=n;

```

```

isdn=n;
dtmf=n;
mf=n;
fxo=n;
fgd=n;
mgcp-erqnt-unsupp=y;
mgcp-hairpin-unsupp=y;
mgcp-cmd-seq-unsupp=y;
mgcp-rsipstar-supp=y
description=cisco access server as5400 tgw profile

```

Telogy Profile

The Telogy is used as a residential gateway. The Telogy box supports two terminations.

```

add mgw-profile id=Telogy1;
VENDOR=Telogy;
SILENT-SUPPRESS-SUPP=Y;
MGCP-VARIANT=NCS_1_0;
RBK-ON-CONN-SUPP=N;
PACKET-TYPE=IP;
AAL1=N;
AAL2=N;
AAL5=N;
PVC=N;
SVC=N;
SPVC=N;
EC=N;
MPARTY-CONFERENCE=N;
MPARTY-3WAY=N;
NUM-PER-MPARTY=1;
NUM-OF-MPARTY=1;
LPTIME=10;
HPTIME=20;
ISDN=N;
DTMF=N;
MF=N;
FXO=N;
FXS=N;
FGD=N;
BACKHAUL-TYPE=RUDP;
SDP-ORIGFIELD-UNSUPP=Y;
SDP-SESSNAME-UNSUPP=Y;
SDP-EMAIL-UNSUPP=Y;
SDP-PHONE-UNSUPP=Y;
SDP-URI-UNSUPP=Y;
SDP-BANDWIDTH-UNSUPP=Y;
SDP-INFO-UNSUPP=Y;
SDP-TIME-UNSUPP=Y;
SDP-ATTRIB-UNSUPP=Y;
MGCP-ERQNT-UNSUPP=Y;
MGCP-HAIRPIN-UNSUPP=Y;
MGCP-QLOOP-UNSUPP=Y;
MGCP-3WAY-HSHAKE-UNSUPP=N;
MGCP-CONN-ID-AT-GW-UNSUPP=N;
MGCP-CMD-SEQ-UNSUPP=N;
TERMINATION-PREFIX=aaln/;
PORT-START=1;
DESCRIPTION=Telogy;

```

Voice Interworking Service Module Profile

The following media gateway profile shows gateways with a voice interworking service module (VISM):

```

ID=C0401-VISM21
VENDOR=Cisco
SILENT-SUPPRESS_SUPP=N
MGCP-VARIANT=NONE
RBK-ON-CONN_SUPP=Y
PACKET-TYPE=IP
AAL1=N
AAL2=N
AAL5=N
PVC=N
SVC=N
SPVC=N
EC=Y
MPARTY-CONFERENCE=Y
MPARTY-3WAY=Y
NUM-PER-MPARTY=3
NUM-OF-MPARTY=3
LPTIME=20
HPTIME=20
ISDN=N
DTMF=N
MF=Y
FXO=N
FXS=N
FGD=N
BACKHAUL-TYPE=RUDP
SDP-ORIGFIELD-UNSUPP=N
SDP-SESSNAME-UNSUPP=N
SDP-EMAIL-UNSUPP=N
SDP-PHONE-UNSUPP=N
SDP-URI-UNSUPP=N
SDP-BANDWIDTH-UNSUPP=N
SDP-INFO-UNSUPP=N
SDP-TIME-UNSUPP=N
SDP-ATTRIB-UNSUPP=N
MGCP-ERQNT-UNSUPP=N
MGCP-HAIRPIN-UNSUPP=Y
MGCP-QLOOP-UNSUPP=N
MGCP-3WAY-HSHAKE-UNSUPP=N
MGCP-CONN-ID-AT-GW-UNSUPP=N
MGCP-CMD-SEQ-UNSUPP=Y
MGCP-VMWI-UNSUPP=Y
PORT-START=0
MGCP-VERSION=MGCP-1-0
MGCP-RSVP-UNSUPP=Y
MGCP-RSIPSTAR-UNSUPP=N
MGCP-TERM-INIT-LEVEL=0
IPTOS-RTP-LOWDELAY=Y
IPTOS-RTP-THROUGHPUT=N
IPTOS-RTP-RELIABILITY=N
IPTOS-RTP-PRECEDENCE=CRITICAL
MGCP-HAIRPIN-Z2-UNSUPP=Y
DTMF-CISCO-RTP=Y
DTMF-CISCO-NSE=Y
DTMF-NTE=Y
DTMF-GW-NTE=Y
DTMF-OOB=N
R-G=Y

```

```

R-BE=Y
R-CL=Y
MGW-TYPE=MGX8850
OSI-UNSUPP=Y
MGCP-PSTTONE-UNSUPP=Y
MGCP-DIALTONE-TO-UNSUPP=Y
MGCP-MWI-UNSUPP=N
SPARE1-UNSUPP=Y
SPARE2-UNSUPP=Y
IPTOS-RTP-UNSUPP=N
MGCP-NAS-UNSUPP=Y
MGCP-FAX-UNSUPP=Y
MGCP-ES-UNSUPP=Y
FAX-T38-GWMODE-SUPP=Y
FAX-T38-CAMODE-SUPP=N
FAX-INBAND-SUPP=Y
FAX-PREF-MODE=FAX-T38-GWMODE
USE-STATIC-PROFILE=N
REFRESH-DIGIT-MAP=N
MGCP-XDLCX-UNSUPP=Y
MGCP-CAS-BLOCK-UNSUPP=Y
CODEC-NEG-UNSUPP=Y
MGCP-DQOS-UNSUPP=Y
MGCP-PC-SEC-UNSUPP=Y
DOMAIN-NAME-CACHING-UNSUPP=N

```

Voice Interworking Service Module Trunking Gateway Profile

The following trunking gateway profile shows gateways with a voice interworking service module (VISM).

```

[
ID=RALEIGHDS1-505B
TYPE=A7
HOP-COUNTER=20
CFN-SUPP=N
COT-ORIG=N
COT-FREQ=0
COT-TONE=4W-TO-4W
COT-DURATION=1
ECHO-SUPP-REQUIRED=N
SATELLITE-CIRCUIT=N
INBAND-INFO=N
SEND-CIP=N
SEND-CPN=Y
SEND-OCN=Y
SEND-REDIR-NUM=Y
SEND-ATP=Y
SEND-GAP=Y
SEND-GN=N
SEND-JIP=Y
T-IAM=20
T-REL=6
T-RSC=15
T-GRS=15
T-CGB=15
T-BLO=6
T-8=15
T-CCR-R=12
T-COT-R=20
T-COT-L=300
FAST-ANSWER-SUPP=N

```

```

SEND-HOPCOUNTER=Y
SEND-CIP-NONGEO=N
SEND-CPN-PRES=N
SEND-REDIRINFO=Y
REDIR-MAX=5
T-9=255
ALARM-CARRIER=UNKNOWN
ALLOW-EXM=Y
ALLOW-CRMCRA=Y
CCT-GRP-CARRIER=DIGITAL
DEFAULT-CHGNOA=NOTUSED
DEFAULT-CHGNPI=NOTUSED
DEFAULT-OLI=NOTUSED
SEND-CHNOLIP=N
SEND-CHN-NONGEO=N
SEND-NOTIFICATION=N
SEND-SERVICECODE=N
SEND-TRANSREQ=N

```

Default Digit Maps

This section provides provisioning examples for 7- and 10-digit dialing.

7-Digit Local Dialing

The following default digit map is provisioned in the CA if 7-digit local dialing is supported:

```

add digit-map id=default; digit-pattern
=0T|00|[2-9]11|1[2-9]11|[2-9]xxxxxx|1[2-9]xx[2-9]xxxxxx|0[2-9]xx[2-9]xxxxxx|011xxxxxx.T|01
xxxxxx.T|101xxxx|#|*xx|xxxxxxxxxxxxxxxxxxxxxx; description=default digit map for 7 digit
local dialing;

```

The string is interpreted as follows:

| String | Description |
|------------------------|--|
| 0T | Local operator (4-second timing after 0) (see notes 1 and 2) |
| 00 | InterLATA operator based on PIC (or dialed carrier access code) |
| [2-9]11 | N11 calls (411, 911, and so on) |
| 1[2-9]11 | N11 toll calls (for example, 1+411) |
| [2-9]xxxxxx | 7D local calls (no timing after 7) |
| 1[2-9]xx[2-9]xxxxxx | 1+10 digit interLATA/intraLATA calls |
| 0[2-9]xx[2-9]xxxxxx | 0+10 digit local/toll calls |
| 011xxxxxx.T | International call (4-second timing after 6 digits following 011) |
| 01xxxxxx.T | Operator-assisted international call (4-second timing after 6 digits following 01) |
| 101xxxx | Casual dialing |
| # | Cut-through call if dialed after 101xxxx |
| *xx | Vertical service codes |
| xxxxxxxxxxxxxxxxxxxxxx | Used to collect a maximum of 16 digits |

**Note**

- (1) The interdigit timeout period is 16 seconds.
 (2) If the character “T” is specified, the interdigit timeout period is changed to 4 seconds at the media gateway.

10-Digit Local Dialing

The following default digit map is provisioned in the CA if 10-digit local dialing is supported:

```
add digit-map id=default;
digit-pattern=0T|00|[2-9]11|1[2-9]11|[2-9]xx[2-9]xxxxxx|1[2-9]xx[2-9]xxxxxx|0[2-9]xx[2-9]xxxxxx|011xxxxxx.T|01xxxxxx.T|101xxxx|#|*xx|xxxxxxxxxxxxxxxxxxxxxx; description=default digit map for 10 digit local dialing;
```

The string is interpreted as follows:

| String | Definition |
|------------------------|--|
| 0T | Local operator (4-second timing after 0) (see notes 1 and 2) |
| 00 | InterLATA operator based on PIC (or dialed carrier access code) |
| [2-9]11 | N11 calls (411, 911, and so on) |
| 1[2-9]11 | N11 toll calls (for example, 1+411) |
| [2-9]xx[2-9]xxxxxx | 10 digit local calls |
| 1[2-9]xx[2-9]xxxxxx | 1+10 digit interLATA/intraLATA calls |
| 0[2-9]xx[2-9]xxxxxx | 0+10 digit local/toll calls |
| 011xxxxxx.T | International call (4-second timing after 6 digits following 011) |
| 01xxxxxx.T | Operator-assisted International call (4-second timing after 6 digits following 01) |
| 101xxxx | Casual dialing |
| # | Cut-through call if dialed after 101xxxx |
| *xx | Vertical service codes |
| xxxxxxxxxxxxxxxxxxxxxx | Used to collect a maximum of 16 digits |

**Note**

- (1) The interdigit timeout period is 16 seconds.
 (2) If the character “T” is specified, the interdigit timeout period is changed to 4 seconds at the media gateway.

7- or 10-Digit Local Dialing

The following default digit map is provisioned in the CA if both 7- or 10-digit local dialing is supported:

```
add digit-map id=default;
digit-pattern=0T|00|[2-9]11|1[2-9]11|[2-9]xxxxxxT|[2-9]xx[2-9]xxxxxx|1[2-9]xx[2-9]xxxxxx|0[2-9]xx[2-9]xxxxxx|011xxxxxx.T|01xxxxxx.T|101xxxx|#|*xx|xxxxxxxxxxxxxxxxxxxxxx;
description=default digit map for 10 digit local dialing;
```

The string is interpreted as follows:

| String | Description |
|----------------------|--|
| 0T | Local operator (4-second timing after 0) (see notes) |
| 00 | InterLATA operator based on PIC (or dialed carrier access code) |
| [2-9]11 | N11 calls (411, 911, and so on) |
| 1[2-9]11 | N11 toll calls (for example, 1+411) |
| [2-9]xxxxxxT | 7-digit local with 4-second timing after 7 digits |
| [2-9]xx[2-9]xxxxxx | 10-digit local calls |
| 1[2-9]xx[2-9]xxxxxx | 1+10 digit interLATA/intraLATA calls |
| 0[2-9]xx[2-9]xxxxxx | 0+10 digit local/toll calls |
| 011xxxxxx.T | International call (4-second timing after 6 digits following 011) |
| 01xxxxxx.T | Operator-assisted International call (4-second timing after 6 digits following 01) |
| 101xxxx | Casual dialing |
| # | Cut-through call if dialed after 101xxxx |
| *xx | Vertical service codes |
| xxxxxxxxxxxxxxxxxxxx | Used to collect a maximum of 16 digits. |

**Note**

- (1) The interdigit timeout period is 16 seconds.
- (2) If character “T” is specified, the interdigit timeout period is changed to 4 seconds at the media gateway.

Asia Provisioning Script

The following script shows example provisioning for a BTS CA and FS for Asia:

```
#####
# Add CA and FSs
#####

add call-agent id=CA146; mgw-monitoring-enabled=Y;
tsap-addr-sidea=sim-CBTSCA.CiscoBTS.SCUniVoice.net;

add feature-server id=FSAIN205; type=AIN;
tsap-addr-sidea=asm-CBTSAIN.CiscoBTS.SCUniVoice.net;

add feature-server id=FSPTC235; type=POTS;
tsap-addr-sidea=pots-CBTSPTC.CiscoBTS.SCUniVoice.net;

#####
# Add NDC EC
#####

add ndc DIGIT_STRING=028;
add ndc digit-string=0816;
add ndc digit-string=0838;

add exchange-code ndc=028; ec=8293;
```



```

add exchange-code ndc=0816; ec=681;
add exchange-code ndc=0838; ec=681;

add office-code ndc=028; ec=8293; dn-group=xxxx;
add office-code ndc=0816; ec=681; dn-group=xxxx;
add office-code ndc=0838; ec=681; dn-group=xxxx;

#####
# Add digit manipulation
#####

Add mgw ID=30994; TSAP_ADDR=172.28.255.56; CALL_AGENT_ID=CA146; MGW_PROFILE_ID=komodo;
CALL_AGENT_CONTROL_PORT=2728; RGW=Y;
Add mgw ID=30999; TSAP_ADDR=172.28.255.160; CALL_AGENT_ID=CA146; MGW_PROFILE_ID=komodo;
CALL_AGENT_CONTROL_PORT=2728; RGW=Y;
Add mgw ID=30712; TSAP_ADDR=172.16.1.3; CALL_AGENT_ID=CA146; MGW_PROFILE_ID=komodo;
CALL_AGENT_CONTROL_PORT=2728; RGW=Y;
Add mgw ID=30710; TSAP_ADDR=172.16.1.7; CALL_AGENT_ID=CA146; MGW_PROFILE_ID=komodo;
CALL_AGENT_CONTROL_PORT=2728; RGW=Y;
Add mgw ID=30718; TSAP_ADDR=172.16.1.48; CALL_AGENT_ID=CA146; MGW_PROFILE_ID=komodo;
CALL_AGENT_CONTROL_PORT=2728; RGW=Y;
Add mgw ID=30722; TSAP_ADDR=172.16.1.1; CALL_AGENT_ID=CA146; MGW_PROFILE_ID=komodo;
CALL_AGENT_CONTROL_PORT=2728; RGW=Y;
Add mgw ID=30724; TSAP_ADDR=172.16.1.49; CALL_AGENT_ID=CA146; MGW_PROFILE_ID=komodo;
CALL_AGENT_CONTROL_PORT=2728; RGW=Y;
Add mgw ID=30728; TSAP_ADDR=172.16.1.45; CALL_AGENT_ID=CA146; MGW_PROFILE_ID=komodo;
CALL_AGENT_CONTROL_PORT=2728; RGW=Y;
Add mgw ID=30716; TSAP_ADDR=172.16.1.54; CALL_AGENT_ID=CA146; MGW_PROFILE_ID=komodo;
CALL_AGENT_CONTROL_PORT=2728; RGW=Y;
Add mgw ID=30794; TSAP_ADDR=172.16.1.43; CALL_AGENT_ID=CA146; MGW_PROFILE_ID=komodo;
CALL_AGENT_CONTROL_PORT=2728; RGW=Y;
Add mgw ID=30790; TSAP_ADDR=172.16.1.46; CALL_AGENT_ID=CA146; MGW_PROFILE_ID=komodo;
CALL_AGENT_CONTROL_PORT=2728; RGW=Y;
Add mgw ID=36702; TSAP_ADDR=172.20.0.2; CALL_AGENT_ID=CA146; MGW_PROFILE_ID=komodo;
CALL_AGENT_CONTROL_PORT=2728; RGW=Y;
Add mgw ID=36739; TSAP_ADDR=172.20.0.20; CALL_AGENT_ID=CA146; MGW_PROFILE_ID=komodo;
CALL_AGENT_CONTROL_PORT=2728; RGW=Y;
Add mgw ID=36797; TSAP_ADDR=172.20.0.11; CALL_AGENT_ID=CA146; MGW_PROFILE_ID=komodo;
CALL_AGENT_CONTROL_PORT=2728; RGW=Y;
Add mgw ID=36762; TSAP_ADDR=172.20.0.32; CALL_AGENT_ID=CA146; MGW_PROFILE_ID=komodo;
CALL_AGENT_CONTROL_PORT=2728; RGW=Y;
Add mgw ID=36765; TSAP_ADDR=172.20.0.34; CALL_AGENT_ID=CA146; MGW_PROFILE_ID=komodo;
CALL_AGENT_CONTROL_PORT=2728; RGW=Y;
Add mgw ID=36782; TSAP_ADDR=172.20.0.42; CALL_AGENT_ID=CA146; MGW_PROFILE_ID=komodo;
CALL_AGENT_CONTROL_PORT=2728; RGW=Y;
Add mgw ID=36788; TSAP_ADDR=172.20.0.46; CALL_AGENT_ID=CA146; MGW_PROFILE_ID=komodo;
CALL_AGENT_CONTROL_PORT=2728; RGW=Y;
Add mgw ID=36700; TSAP_ADDR=172.20.0.1; CALL_AGENT_ID=CA146; MGW_PROFILE_ID=komodo;
CALL_AGENT_CONTROL_PORT=2728; RGW=Y;
Add mgw ID=36704; TSAP_ADDR=172.20.0.3; CALL_AGENT_ID=CA146; MGW_PROFILE_ID=komodo;
CALL_AGENT_CONTROL_PORT=2728; RGW=Y;
Add mgw ID=36707; TSAP_ADDR=172.20.0.4; CALL_AGENT_ID=CA146; MGW_PROFILE_ID=komodo;
CALL_AGENT_CONTROL_PORT=2728; RGW=Y;
Add mgw ID=36703; TSAP_ADDR=172.20.0.5; CALL_AGENT_ID=CA146; MGW_PROFILE_ID=komodo;
CALL_AGENT_CONTROL_PORT=2728; RGW=Y;

Add termination port-start=1; port-end=2; prefix=a00; type=line; mgw-id=30994
Add termination port-start=1; port-end=2; prefix=a00; type=line; mgw-id =30999
Add termination port-start=1; port-end=2; prefix=a00; type=line; mgw-id =30712
Add termination port-start=1; port-end=2; prefix=a00; type=line; mgw-id =30710
Add termination port-start=1; port-end=2; prefix=a00; type=line; mgw-id =30718
Add termination port-start=1; port-end=2; prefix=a00; type=line; mgw-id =30722

```

```

Add termination port-start=1; port-end=2; prefix=a00; type=line; mgw-id =30724
Add termination port-start=1; port-end=2; prefix=a00; type=line; mgw-id =30728
Add termination port-start=1; port-end=2; prefix=a00; type=line; mgw-id =30716
Add termination port-start=1; port-end=2; prefix=a00; type=line; mgw-id =30794
Add termination port-start=1; port-end=2; prefix=a00; type=line; mgw-id =30790
Add termination port-start=1; port-end=2; prefix=a00; type=line; mgw-id =36702
Add termination port-start=1; port-end=2; prefix=a00; type=line; mgw-id=36700;
Add termination port-start=1; port-end=2; prefix=a00; type=line; mgw-id=36704;
Add termination port-start=1; port-end=2; prefix=a00; type=line; mgw-id=36707;
Add termination port-start=1; port-end=2; prefix=a00; type=line; mgw-id=36703;
Add termination port-start=1; port-end=2; prefix=a00; type=line; mgw-id=36739;
Add termination port-start=1; port-end=2; prefix=a00; type=line; mgw-id=36797;
Add termination port-start=1; port-end=2; prefix=a00; type=line; mgw-id=36762;
Add termination port-start=1; port-end=2; prefix=a00; type=line; mgw-id=36765;
Add termination port-start=1; port-end=2; prefix=a00; type=line; mgw-id=36782;
Add termination port-start=1; port-end=2; prefix=a00; type=line; mgw-id=36788;

add digit-map ID=CD-local;
DIGIT_PATTERN=0[1-9]|100x|11x|12[0-2]|12[3-9]x.T|13xxxxxxxxx|16[0-9]x.T|17[0-8]|179x0|180|
186[0,1]|18[7-9]|19[0-9]x.T|2-7]xxxxxxxx|800xxxxxxxx|8[1-9]xxxxxx|9[5-6]xxx|*[1-9][0-9]*|*[
1-9][0-9]###[1-9][0-9]###[1-9][0-9]*|;

add digit-map ID=CD-int;
DIGIT_PATTERN=00[1-9]xxxxxxxx.T|0[1-9]xxxxx.T|010xxxxxxxx|013xxxxxxxx|02[0-8]xxxxxxxx|029
xxxxxxxx|0[3-4]xxxxxxxx|051[0-1]xxxxxxxx|0512xxxxxxxx|051[3-9]xxxxxxxx|05[2-6]xxxxxxxx|0570x
xxxxxxxx|0571xxxxxxxx|057[2-3]xxxxxxxx|0574xxxxxxxx|057[5-6]xxxxxxxx|0577xxxxxxxx|057[8-9]xxxx
xxx|06xxxxxxxx|07[0-4]xxxxxxxx|075[0-4]xxxxxxxx|0755xxxxxxxx|075[6-9]xxxxxxxx|08[0-8]xxxxxxxx
x|089[0-7]xxxxxxxx|0898xxxxxxxx|0899xxxxxxxx|09xxxxxxxx|100x|11x|12[0-2]|12[3-9]x.T|13xxxxx
xxxx|16[0-9]x.T|17[0-8]|179x0|179x1x.T|180|186[0,1]|18[7-9]|19[0-9]x.T|2-7]xxxxxxxx|800xxx
xxxx|8[1-9]xxxxxx|9[5-6]xxx|*[1-9][0-9]*|*[1-9][0-9]###[1-9][0-9]###[1-9][0-9]*|;

add digit-map ID=CD-nat;
DIGIT_PATTERN=0[1-9]xxxx.T|010xxxxxxxx|013xxxxxxxx|02[0-8]xxxxxxxx|029xxxxxxxx|0[3-4]xxxxx
xxxx|051[0-1]xxxxxxxx|0512xxxxxxxx|051[3-9]xxxxxxxx|05[2-6]xxxxxxxx|0570xxxxxxxx|0571xxxxxxxx
|057[2-3]xxxxxxxx|0574xxxxxxxx|057[5-6]xxxxxxxx|0577xxxxxxxx|057[8-9]xxxxxxxx|06xxxxxxxx|07[
0-4]xxxxxxxx|075[0-4]xxxxxxxx|0755xxxxxxxx|075[6-9]xxxxxxxx|08[0-8]xxxxxxxx|089[0-7]xxxxxxxx|0
898xxxxxxxx|0899xxxxxxxx|09xxxxxxxx|100x|11x|12[0-2]|12[3-9]x.T|13xxxxxxxx|16[0-9]x.T|17[
0-8]|179x0|179x1x.T|180|186[0,1]|18[7-9]|19[0-9]x.T|2-7]xxxxxxxx|800xxxxxxxx|8[1-9]xxxxxx|9
[5-6]xxx|*[1-9][0-9]*|*[1-9][0-9]###[1-9][0-9]###[1-9][0-9]*|;

add dial-plan-profile id=CD01;
add dial-plan-profile id=CD02;
add dial-plan-profile id=CD03;

add pop ID=1;
STATE=CD; COUNTRY=PRC; TIMEZONE=PRC; DIGIT_MAP_ID=CD-int; LOCAL_7D_DIALING=Y; ITP=N; ZERO_MINUS=
LEC; BLOCK_EAWOPIC=Y; CNAM_OPTION=NONE; PIC2_REQD=N; TREAT_IMS_ANONYMOUS=N;

add sub-profile ID=CD-local; DIGIT_MAP_ID=CD-local; DIAL_PLAN_ID=CD03;
LOCAL_PFX1_OPT=NR; TOLL_PFX1_OPT=RQ; POP_ID=1; OLI=0; EA_USE_PIC1=Y;

add sub-profile ID=CD-nat; DIGIT_MAP_ID=CD-nat; DIAL_PLAN_ID=CD02; LOCAL_PFX1_OPT=NR;
TOLL_PFX1_OPT=RQ; POP_ID=1; OLI=0; EA_USE_PIC1=Y;

add sub-profile
ID=CD-int; DIGIT_MAP_ID=CD-int; DIAL_PLAN_ID=CD01; LOCAL_PFX1_OPT=NR; TOLL_PFX1_OPT=RQ; POP_ID=
1; OLI=0; EA_USE_PIC1=Y;

Add sub ID=30710; CATEGORY=INDIVIDUAL; BILLING_DN=02882930710; DN1=02882930710;
TERM_ID=a001; MGW_ID=30710; SUB_PROFILE_ID=CD-local;
Add sub ID=30711; CATEGORY=INDIVIDUAL; BILLING_DN=02882930711; DN1=02882930711;
TERM_ID=a002; MGW_ID=30710; SUB_PROFILE_ID=CD-local;
Add sub ID=30712; CATEGORY=INDIVIDUAL; BILLING_DN=02882930712; DN1=02882930712;
TERM_ID=a001; MGW_ID=30712; SUB_PROFILE_ID=CD-local;

```

```
Add sub ID=30713; CATEGORY=INDIVIDUAL; BILLING_DN=02882930713; DN1=02882930713;
TERM_ID=a002; MGW_ID=30712; SUB_PROFILE_ID=CD-local;
Add sub ID=30716; CATEGORY=INDIVIDUAL; BILLING_DN=02882930716; DN1=02882930716;
TERM_ID=a001; MGW_ID=30716; SUB_PROFILE_ID=CD-local;
Add sub ID=30717; CATEGORY=INDIVIDUAL; BILLING_DN=02882930717; DN1=02882930717;
TERM_ID=a002; MGW_ID=30716; SUB_PROFILE_ID=CD-local;
Add sub ID=30718; CATEGORY=INDIVIDUAL; BILLING_DN=02882930718; DN1=02882930718;
TERM_ID=a001; MGW_ID=30718; SUB_PROFILE_ID=CD-local;
Add sub ID=30719; CATEGORY=INDIVIDUAL; BILLING_DN=02882930719; DN1=02882930719;
TERM_ID=a002; MGW_ID=30718; SUB_PROFILE_ID=CD-local;
Add sub ID=30722; CATEGORY=INDIVIDUAL; BILLING_DN=02882930722; DN1=02882930722;
TERM_ID=a001; MGW_ID=30722; SUB_PROFILE_ID=CD-local;
Add sub ID=30723; CATEGORY=INDIVIDUAL; BILLING_DN=02882930723; DN1=02882930723;
TERM_ID=a002; MGW_ID=30722; SUB_PROFILE_ID=CD-local;
Add sub ID=30724; CATEGORY=INDIVIDUAL; BILLING_DN=02882930724; DN1=02882930724;
TERM_ID=a001; MGW_ID=30724; SUB_PROFILE_ID=CD-nat;
Add sub ID=30725; CATEGORY=INDIVIDUAL; BILLING_DN=02882930725; DN1=02882930725;
TERM_ID=a002; MGW_ID=30724; SUB_PROFILE_ID=CD-nat;
Add sub ID=30728; CATEGORY=INDIVIDUAL; BILLING_DN=02882930728; DN1=02882930728;
TERM_ID=a001; MGW_ID=30728; SUB_PROFILE_ID=CD-local;
Add sub ID=30729; CATEGORY=INDIVIDUAL; BILLING_DN=02882930729; DN1=02882930729;
TERM_ID=a002; MGW_ID=30728; SUB_PROFILE_ID=CD-local;
Add sub ID=30790; CATEGORY=INDIVIDUAL; BILLING_DN=02882930790; DN1=02882930790;
TERM_ID=a001; MGW_ID=30790; SUB_PROFILE_ID=CD-local;
Add sub ID=30791; CATEGORY=INDIVIDUAL; BILLING_DN=02882930791; DN1=02882930791;
TERM_ID=a002; MGW_ID=30790; SUB_PROFILE_ID=CD-local;
Add sub ID=30794; CATEGORY=INDIVIDUAL; BILLING_DN=02882930794; DN1=02882930794;
TERM_ID=a001; MGW_ID=30794; SUB_PROFILE_ID=CD-local;
Add sub ID=30795; CATEGORY=INDIVIDUAL; BILLING_DN=02882930795; DN1=02882930795;
TERM_ID=a002; MGW_ID=30794; SUB_PROFILE_ID=CD-local;
Add sub ID=30994; CATEGORY=INDIVIDUAL; BILLING_DN=02882930994; DN1=02882930994;
TERM_ID=a001; MGW_ID=30994; SUB_PROFILE_ID=CD-int;
Add sub ID=30999; CATEGORY=INDIVIDUAL; BILLING_DN=02882930999; DN1=02882930999;
TERM_ID=a001; MGW_ID=30999; SUB_PROFILE_ID=CD-int;
Add sub ID=36702; CATEGORY=INDIVIDUAL; BILLING_DN=02882936702; DN1=02882936702;
TERM_ID=a001; MGW_ID=36702; SUB_PROFILE_ID=CD-nat;
Add sub ID=36709; CATEGORY=INDIVIDUAL; BILLING_DN=02882936709; DN1=02882936709;
TERM_ID=a002; MGW_ID=36702; SUB_PROFILE_ID=CD-nat;
Add sub ID=36700; CATEGORY=INDIVIDUAL; BILLING_DN=02882936700; DN1=02882936700;
TERM_ID=a001; MGW_ID=36700; SUB_PROFILE_ID=CD-local;
Add sub ID=36701; CATEGORY=INDIVIDUAL; BILLING_DN=02882936701; DN1=02882936701;
TERM_ID=a002; MGW_ID=36700; SUB_PROFILE_ID=CD-local;
Add sub ID=36704; CATEGORY=INDIVIDUAL; BILLING_DN=02882936704; DN1=02882936704;
TERM_ID=a001; MGW_ID=36704; SUB_PROFILE_ID=CD-local;
Add sub ID=36705; CATEGORY=INDIVIDUAL; BILLING_DN=02882936705; DN1=02882936705;
TERM_ID=a002; MGW_ID=36704; SUB_PROFILE_ID=CD-local;
Add sub ID=36707; CATEGORY=INDIVIDUAL; BILLING_DN=02882936707; DN1=02882936707;
TERM_ID=a001; MGW_ID=36707; SUB_PROFILE_ID=CD-local;
Add sub ID=36706; CATEGORY=INDIVIDUAL; BILLING_DN=02882936706; DN1=02882936706;
TERM_ID=a002; MGW_ID=36707; SUB_PROFILE_ID=CD-local;
Add sub ID=36703; CATEGORY=INDIVIDUAL; BILLING_DN=02882936703; DN1=02882936703;
TERM_ID=a001; MGW_ID=36703; SUB_PROFILE_ID=CD-local;
Add sub ID=36799; CATEGORY=INDIVIDUAL; BILLING_DN=02882936799; DN1=02882936799;
TERM_ID=a002; MGW_ID=36703; SUB_PROFILE_ID=CD-local;
Add sub ID=36739; CATEGORY=INDIVIDUAL; BILLING_DN=02882936739; DN1=02882936739;
TERM_ID=a001; MGW_ID=36739; SUB_PROFILE_ID=CD-local;
Add sub ID=36738; CATEGORY=INDIVIDUAL; BILLING_DN=02882936738; DN1=02882936738;
TERM_ID=a002; MGW_ID=36739; SUB_PROFILE_ID=CD-local;
Add sub ID=36797; CATEGORY=INDIVIDUAL; BILLING_DN=02882936797; DN1=02882936797;
TERM_ID=a001; MGW_ID=36797; SUB_PROFILE_ID=CD-local;
Add sub ID=36798; CATEGORY=INDIVIDUAL; BILLING_DN=02882936798; DN1=02882936798;
TERM_ID=a002; MGW_ID=36797; SUB_PROFILE_ID=CD-local;
Add sub ID=36762; CATEGORY=INDIVIDUAL; BILLING_DN=02882936762; DN1=02882936762;
TERM_ID=a001; MGW_ID=36762; SUB_PROFILE_ID=CD-local;
```

```

Add sub ID=36761; CATEGORY=INDIVIDUAL; BILLING_DN=02882936761; DN1=02882936761;
TERM_ID=a002; MGW_ID=36762; SUB_PROFILE_ID=CD-local;
Add sub ID=36765; CATEGORY=INDIVIDUAL; BILLING_DN=02882936765; DN1=02882936765;
TERM_ID=a001; MGW_ID=36765; SUB_PROFILE_ID=CD-local;
Add sub ID=36766; CATEGORY=INDIVIDUAL; BILLING_DN=02882936766; DN1=02882936766;
TERM_ID=a002; MGW_ID=36765; SUB_PROFILE_ID=CD-local;
Add sub ID=36782; CATEGORY=INDIVIDUAL; BILLING_DN=02882936782; DN1=02882936782;
TERM_ID=a001; MGW_ID=36782; SUB_PROFILE_ID=CD-local;
Add sub ID=36783; CATEGORY=INDIVIDUAL; BILLING_DN=02882936783; DN1=02882936783;
TERM_ID=a002; MGW_ID=36782; SUB_PROFILE_ID=CD-local;
Add sub ID=36788; CATEGORY=INDIVIDUAL; BILLING_DN=02882936788; DN1=02882936788;
TERM_ID=a001; MGW_ID=36788; SUB_PROFILE_ID=CD-local;
Add sub ID=36789; CATEGORY=INDIVIDUAL; BILLING_DN=02882936789; DN1=02882936789;
TERM_ID=a002; MGW_ID=36788; SUB_PROFILE_ID=CD-local;

```

```

Equip subscriber-termination ID=30710;
Equip subscriber-termination ID=30711;
Equip subscriber-termination ID=30712;
Equip subscriber-termination ID=30713;
Equip subscriber-termination ID=30716;
Equip subscriber-termination ID=30717;
Equip subscriber-termination ID=30718;
Equip subscriber-termination ID=30719;
Equip subscriber-termination ID=30722;
Equip subscriber-termination ID=30723;
Equip subscriber-termination ID=30724;
Equip subscriber-termination ID=30725;
Equip subscriber-termination ID=30728;
Equip subscriber-termination ID=30729;
Equip subscriber-termination ID=30790;
Equip subscriber-termination ID=30791;
Equip subscriber-termination ID=30794;
Equip subscriber-termination ID=30795;
Equip subscriber-termination ID=30994;
Equip subscriber-termination ID=30999;
Equip subscriber-termination ID=36702;
Equip subscriber-termination ID=36709;
Equip subscriber-termination ID=36700;
Equip subscriber-termination ID=36701;
Equip subscriber-termination ID=36704;
Equip subscriber-termination ID=36705;
Equip subscriber-termination ID=36707;
Equip subscriber-termination ID=36706;
Equip subscriber-termination ID=36703;
Equip subscriber-termination ID=36799;
Equip subscriber-termination ID=36739;
Equip subscriber-termination ID=36738;
Equip subscriber-termination ID=36797;
Equip subscriber-termination ID=36798;
Equip subscriber-termination ID=36762;
Equip subscriber-termination ID=36761;
Equip subscriber-termination ID=36765;
Equip subscriber-termination ID=36766;
Equip subscriber-termination ID=36782;
Equip subscriber-termination ID=36783;
Equip subscriber-termination ID=36788;
Equip subscriber-termination ID=36789;

```

```

Add dial-plan ID=CD03; DIGIT_STRING=8293071; DEST_ID= lchina028; MIN_DIGITS=8;
MAX_DIGITS=8; NOA=UNKNOWN;

```

```

Add dial-plan ID=CD03; DIGIT_STRING=8293072; DEST_ID= lchina028; MIN_DIGITS=8;
MAX_DIGITS=8; NOA=UNKNOWN;
Add dial-plan ID=CD03; DIGIT_STRING=8293079; DEST_ID= lchina028; MIN_DIGITS=8;
MAX_DIGITS=8; NOA=UNKNOWN;
Add dial-plan ID=CD03; DIGIT_STRING=8293096; DEST_ID= lchina028; MIN_DIGITS=8;
MAX_DIGITS=8; NOA=UNKNOWN;
Add dial-plan ID=CD03; DIGIT_STRING=82930994; DEST_ID= lchina028; MIN_DIGITS=8;
MAX_DIGITS=8; NOA=UNKNOWN;
Add dial-plan ID=CD03; DIGIT_STRING=82930999; DEST_ID= lchina028; MIN_DIGITS=8;
MAX_DIGITS=8; NOA=UNKNOWN;
Add dial-plan ID=CD03; DIGIT_STRING=82936702; DEST_ID= lchina028; MIN_DIGITS=8;
MAX_DIGITS=8; NOA=UNKNOWN;
Add dial-plan ID=CD03; DIGIT_STRING=82936709; DEST_ID= lchina028; MIN_DIGITS=8;
MAX_DIGITS=8; NOA=UNKNOWN;

```

```

-----
Add dial-plan ID=CD01; DIGIT_STRING=8293071; DEST_ID= lchina028; MIN_DIGITS=8;
MAX_DIGITS=8; NOA=UNKNOWN;
Add dial-plan ID=CD01; DIGIT_STRING=8293072; DEST_ID= lchina028; MIN_DIGITS=8;
MAX_DIGITS=8; NOA=UNKNOWN;
Add dial-plan ID=CD01; DIGIT_STRING=8293079; DEST_ID= lchina028; MIN_DIGITS=8;
MAX_DIGITS=8; NOA=UNKNOWN;
Add dial-plan ID=CD01; DIGIT_STRING=8293096; DEST_ID= lchina028; MIN_DIGITS=8;
MAX_DIGITS=8; NOA=UNKNOWN;
Add dial-plan ID=CD01; DIGIT_STRING=82930994; DEST_ID= lchina028; MIN_DIGITS=8;
MAX_DIGITS=8; NOA=UNKNOWN;
Add dial-plan ID=CD01; DIGIT_STRING=82930999; DEST_ID= lchina028; MIN_DIGITS=8;
MAX_DIGITS=8; NOA=UNKNOWN;
Add dial-plan ID=CD01; DIGIT_STRING=82936702; DEST_ID= lchina028; MIN_DIGITS=8;
MAX_DIGITS=8; NOA=UNKNOWN;
Add dial-plan ID=CD01; DIGIT_STRING=82936709; DEST_ID= lchina028; MIN_DIGITS=8;
MAX_DIGITS=8; NOA=UNKNOWN;

```

```

-----
Add dial-plan ID=CD02; DIGIT_STRING=8293071; DEST_ID= lchina028; MIN_DIGITS=8;
MAX_DIGITS=8; NOA=UNKNOWN;
Add dial-plan ID=CD02; DIGIT_STRING=8293072; DEST_ID= lchina028; MIN_DIGITS=8;
MAX_DIGITS=8; NOA=UNKNOWN;
Add dial-plan ID=CD02; DIGIT_STRING=8293079; DEST_ID= lchina028; MIN_DIGITS=8;
MAX_DIGITS=8; NOA=UNKNOWN;
Add dial-plan ID=CD02; DIGIT_STRING=8293096; DEST_ID= lchina028; MIN_DIGITS=8;
MAX_DIGITS=8; NOA=UNKNOWN;
Add dial-plan ID=CD02; DIGIT_STRING=82930994; DEST_ID= lchina028; MIN_DIGITS=8;
MAX_DIGITS=8; NOA=UNKNOWN;
Add dial-plan ID=CD02; DIGIT_STRING=82930999; DEST_ID= lchina028; MIN_DIGITS=8;
MAX_DIGITS=8; NOA=UNKNOWN;
Add dial-plan ID=CD02; DIGIT_STRING=82936702; DEST_ID= lchina028; MIN_DIGITS=8;
MAX_DIGITS=8; NOA=UNKNOWN;
Add dial-plan ID=CD02; DIGIT_STRING=82936709; DEST_ID= lchina028; MIN_DIGITS=8;
MAX_DIGITS=8; NOA=UNKNOWN;

```

```

-----
Control mgw id=30994; mode=forced; target-state=oos;
Control mgw id=30999; mode=forced; target-state=oos;
Control mgw id=30712; mode=forced; target-state=oos;
Control mgw id=30710; mode=forced; target-state=oos;
Control mgw id=30718; mode=forced; target-state=oos;
Control mgw id=30722; mode=forced; target-state=oos;
Control mgw id=30724; mode=forced; target-state=oos;
Control mgw id=30728; mode=forced; target-state=oos;
Control mgw id=30716; mode=forced; target-state=oos;
Control mgw id=30794; mode=forced; target-state=oos;
Control mgw id=30790; mode=forced; target-state=oos;

```

```
Control mgw id=36702; mode=forced; target-state=oos;
```

```
Control mgw id=30994; mode=forced; target-state=ins;
Control mgw id=30999; mode=forced; target-state= ins;
Control mgw id=30712; mode=forced; target-state= ins;
Control mgw id=30710; mode=forced; target-state= ins;
Control mgw id=30718; mode=forced; target-state= ins;
Control mgw id=30722; mode=forced; target-state= ins;
Control mgw id=30724; mode=forced; target-state= ins;
Control mgw id=30728; mode=forced; target-state= ins;
Control mgw id=30716; mode=forced; target-state= ins;
Control mgw id=30794; mode=forced; target-state= ins;
Control mgw id=30790; mode=forced; target-state= ins;
Control mgw id=36702; mode=forced; target-state= ins;
Control mgw id=36700; mode=forced; target-state=ins;
Control mgw id=36704; mode=forced; target-state=ins;
Control mgw id=36707; mode=forced; target-state=ins;
Control mgw id=36703; mode=forced; target-state=ins;
Control mgw id=36739; mode=forced; target-state=ins;
Control mgw id=36797; mode=forced; target-state=ins;
Control mgw id=36762; mode=forced; target-state=ins;
Control mgw id=36765; mode=forced; target-state=ins;
Control mgw id=36782; mode=forced; target-state=ins;
Control mgw id=36788; mode=forced; target-state=ins;
```

```
Control subscriber-termination mode=forced; target-state=ins; ID=30710;
Control subscriber-termination mode=forced; target-state=ins; ID=30711;
Control subscriber-termination mode=forced; target-state=ins; ID=30712;
Control subscriber-termination mode=forced; target-state=ins; ID=30713;
Control subscriber-termination mode=forced; target-state=ins; ID=30716;
Control subscriber-termination mode=forced; target-state=ins; ID=30717;
Control subscriber-termination mode=forced; target-state=ins; ID=30718;
Control subscriber-termination mode=forced; target-state=ins; ID=30719;
Control subscriber-termination mode=forced; target-state=ins; ID=30722;
Control subscriber-termination mode=forced; target-state=ins; ID=30723;
Control subscriber-termination mode=forced; target-state=ins; ID=30724;
Control subscriber-termination mode=forced; target-state=ins; ID=30725;
Control subscriber-termination mode=forced; target-state=ins; ID=30728;
Control subscriber-termination mode=forced; target-state=ins; ID=30729;
Control subscriber-termination mode=forced; target-state=ins; ID=30790;
Control subscriber-termination mode=forced; target-state=ins; ID=30791;
Control subscriber-termination mode=forced; target-state=ins; ID=30794;
Control subscriber-termination mode=forced; target-state=ins; ID=30795;
Control subscriber-termination mode=forced; target-state=ins; ID=30994;
Control subscriber-termination mode=forced; target-state=ins; ID=30999;
Control subscriber-termination mode=forced; target-state=ins; ID=36702;
Control subscriber-termination mode=forced; target-state=ins; ID=36709;
Control subscriber-termination mode=forced; target-state=ins; ID=36700;
Control subscriber-termination mode=forced; target-state=ins; ID=36701;
Control subscriber-termination mode=forced; target-state=ins; ID=36704;
Control subscriber-termination mode=forced; target-state=ins; ID=36705;
Control subscriber-termination mode=forced; target-state=ins; ID=36707;
Control subscriber-termination mode=forced; target-state=ins; ID=36706;
Control subscriber-termination mode=forced; target-state=ins; ID=36703;
Control subscriber-termination mode=forced; target-state=ins; ID=36799;
Control subscriber-termination mode=forced; target-state=ins; ID=36739;
Control subscriber-termination mode=forced; target-state=ins; ID=36738;
Control subscriber-termination mode=forced; target-state=ins; ID=36797;
Control subscriber-termination mode=forced; target-state=ins; ID=36798;
Control subscriber-termination mode=forced; target-state=ins; ID=36762;
Control subscriber-termination mode=forced; target-state=ins; ID=36761;
Control subscriber-termination mode=forced; target-state=ins; ID=36765;
Control subscriber-termination mode=forced; target-state=ins; ID=36766;
```

```
Control subscriber-termination mode=forced; target-state=ins; ID=36782;
Control subscriber-termination mode=forced; target-state=ins; ID=36783;
Control subscriber-termination mode=forced; target-state=ins; ID=36788;
Control subscriber-termination mode=forced; target-state=ins; ID=36789;
```

```
Add sub-service-profile service-id=123; sub-id=30710;
Add sub-service-profile service-id=123; sub-id=30711;
Add sub-service-profile service-id=123; sub-id=30712;
Add sub-service-profile service-id=123; sub-id=30713;
Add sub-service-profile service-id=123; sub-id=30716;
Add sub-service-profile service-id=123; sub-id=30717;
Add sub-service-profile service-id=123; sub-id=30718;
Add sub-service-profile service-id=123; sub-id=30719;
Add sub-service-profile service-id=123; sub-id=30722;
Add sub-service-profile service-id=123; sub-id=30723;
Add sub-service-profile service-id=123; sub-id=30724;
Add sub-service-profile service-id=123; sub-id=30725;
Add sub-service-profile service-id=123; sub-id=30728;
Add sub-service-profile service-id=123; sub-id=30729;
Add sub-service-profile service-id=123; sub-id=30790;
Add sub-service-profile service-id=123; sub-id=30791;
Add sub-service-profile service-id=123; sub-id=30794;
Add sub-service-profile service-id=123; sub-id=30795;
Add sub-service-profile service-id=123; sub-id=30994;
Add sub-service-profile service-id=123; sub-id=30999;
Add sub-service-profile service-id=123; sub-id=36702;
Add sub-service-profile service-id=123; sub-id=36709;
Add sub-service-profile service-id=123; sub-ID=36700;
Add sub-service-profile service-id=123; sub-ID=36701;
Add sub-service-profile service-id=123; sub-ID=36704;
Add sub-service-profile service-id=123; sub-ID=36705;
Add sub-service-profile service-id=123; sub-ID=36707;
Add sub-service-profile service-id=123; sub-ID=36706;
Add sub-service-profile service-id=123; sub-ID=36703;
Add sub-service-profile service-id=123; sub-ID=36799;
Add sub-service-profile service-id=123; sub-ID=36739;
Add sub-service-profile service-id=123; sub-ID=36738;
Add sub-service-profile service-id=123; sub-ID=36797;
Add sub-service-profile service-id=123; sub-ID=36798;
Add sub-service-profile service-id=123; sub-ID=36762;
Add sub-service-profile service-id=123; sub-ID=36761;
Add sub-service-profile service-id=123; sub-ID=36765;
Add sub-service-profile service-id=123; sub-ID=36766;
Add sub-service-profile service-id=123; sub-ID=36782;
Add sub-service-profile service-id=123; sub-ID=36783;
Add sub-service-profile service-id=123; sub-ID=36788;
Add sub-service-profile service-id=123; sub-ID=36789;
```

```
Add dial-plan ID=CD01; DIGIT_STRING=8293670; DEST_ID=lchina028; MIN_DIGITS=8;
MAX_DIGITS=8; NOA=UNKNOWN;
Add dial-plan ID=CD02; DIGIT_STRING=8293670; DEST_ID=lchina028; MIN_DIGITS=8;
MAX_DIGITS=8; NOA=UNKNOWN;
Add dial-plan ID=CD03; DIGIT_STRING=8293670; DEST_ID=lchina028; MIN_DIGITS=8;
MAX_DIGITS=8; NOA=UNKNOWN;
```

```
Add dial-plan ID=CD01; DIGIT_STRING=8293679; DEST_ID=lchina028; MIN_DIGITS=8;
MAX_DIGITS=8; NOA=UNKNOWN;
Add dial-plan ID=CD02; DIGIT_STRING=8293679; DEST_ID=lchina028; MIN_DIGITS=8;
MAX_DIGITS=8; NOA=UNKNOWN;
Add dial-plan ID=CD03; DIGIT_STRING=8293679; DEST_ID=lchina028; MIN_DIGITS=8;
MAX_DIGITS=8; NOA=UNKNOWN;
```

```

Add dial-plan ID=CD01; DIGIT_STRING=8293673; DEST_ID=lchina028; MIN_DIGITS=8;
MAX_DIGITS=8; NOA=UNKNOWN;
Add dial-plan ID=CD02; DIGIT_STRING=8293673; DEST_ID=lchina028; MIN_DIGITS=8;
MAX_DIGITS=8; NOA=UNKNOWN;
Add dial-plan ID=CD03; DIGIT_STRING=8293673; DEST_ID=lchina028; MIN_DIGITS=8;
MAX_DIGITS=8; NOA=UNKNOWN;

Add dial-plan ID=CD01; DIGIT_STRING=8293679; DEST_ID=lchina028; MIN_DIGITS=8;
MAX_DIGITS=8; NOA=UNKNOWN;
Add dial-plan ID=CD02; DIGIT_STRING=8293679; DEST_ID=lchina028; MIN_DIGITS=8;
MAX_DIGITS=8; NOA=UNKNOWN;
Add dial-plan ID=CD03; DIGIT_STRING=8293679; DEST_ID=lchina028; MIN_DIGITS=8;
MAX_DIGITS=8; NOA=UNKNOWN;

Add dial-plan ID=CD01; DIGIT_STRING=8293676; DEST_ID=lchina028; MIN_DIGITS=8;
MAX_DIGITS=8; NOA=UNKNOWN;
Add dial-plan ID=CD02; DIGIT_STRING=8293676; DEST_ID=lchina028; MIN_DIGITS=8;
MAX_DIGITS=8; NOA=UNKNOWN;
Add dial-plan ID=CD03; DIGIT_STRING=8293676; DEST_ID=lchina028; MIN_DIGITS=8;
MAX_DIGITS=8; NOA=UNKNOWN;

Add dial-plan ID=CD01; DIGIT_STRING=8293678; DEST_ID=lchina028; MIN_DIGITS=8;
MAX_DIGITS=8; NOA=UNKNOWN;
Add dial-plan ID=CD02; DIGIT_STRING=8293678; DEST_ID=lchina028; MIN_DIGITS=8;
MAX_DIGITS=8; NOA=UNKNOWN;
Add dial-plan ID=CD03; DIGIT_STRING=8293678; DEST_ID=lchina028; MIN_DIGITS=8;
MAX_DIGITS=8; NOA=UNKNOWN;

*****
Add mgw ID=30730; TSAP_ADDR=172.16.1.2; CALL_AGENT_ID=CA146; MGW_PROFILE_ID=komodo;
CALL_AGENT_CONTROL_PORT=2728; RGW=Y;
Add mgw ID=30736; TSAP_ADDR=172.16.1.40; CALL_AGENT_ID=CA146; MGW_PROFILE_ID=komodo;
CALL_AGENT_CONTROL_PORT=2728; RGW=Y;
Add mgw ID=30848; TSAP_ADDR=172.16.1.51; CALL_AGENT_ID=CA146; MGW_PROFILE_ID=komodo;
CALL_AGENT_CONTROL_PORT=2728; RGW=Y;
Add mgw ID=30800; TSAP_ADDR=172.16.1.44; CALL_AGENT_ID=CA146; MGW_PROFILE_ID=komodo;
CALL_AGENT_CONTROL_PORT=2728; RGW=Y;
Add mgw ID=30836; TSAP_ADDR=172.16.1.30; CALL_AGENT_ID=CA146; MGW_PROFILE_ID=komodo;
CALL_AGENT_CONTROL_PORT=2728; RGW=Y;
Add mgw ID=36710; TSAP_ADDR=172.20.0.6; CALL_AGENT_ID=CA146; MGW_PROFILE_ID=komodo;
CALL_AGENT_CONTROL_PORT=2728; RGW=Y;

Add termination port-start=1; port-end=2; prefix=a00; type=line; mgw-id=30730
Add termination port-start=1; port-end=2; prefix=a00; type=line; mgw-id=30736
Add termination port-start=1; port-end=2; prefix=a00; type=line; mgw-id=30848
Add termination port-start=1; port-end=2; prefix=a00; type=line; mgw-id=30800
Add termination port-start=1; port-end=2; prefix=a00; type=line; mgw-id=30836
Add termination port-start=1; port-end=2; prefix=a00; type=line; mgw-id=36710

Add sub ID=30730; CATEGORY=INDIVIDUAL; BILLING_DN=02882930730; DN1=02882930730;
TERM_ID=a001; MGW_ID=30730; SUB_PROFILE_ID=CD-int;
Add sub ID=30731; CATEGORY=INDIVIDUAL; BILLING_DN=02882930731; DN1=02882930731;
TERM_ID=a002; MGW_ID=30730; SUB_PROFILE_ID=CD-int;
Add sub ID=30736; CATEGORY=INDIVIDUAL; BILLING_DN=02882930736; DN1=02882930736;
TERM_ID=a001; MGW_ID=30736; SUB_PROFILE_ID=CD-local;
Add sub ID=30737; CATEGORY=INDIVIDUAL; BILLING_DN=02882930737; DN1=02882930737;
TERM_ID=a002; MGW_ID=30736; SUB_PROFILE_ID=CD-local;
Add sub ID=30848; CATEGORY=INDIVIDUAL; BILLING_DN=02882930848; DN1=02882930848;
TERM_ID=a001; MGW_ID=30848; SUB_PROFILE_ID=CD-local;

```



```

Add sub ID=30849; CATEGORY=INDIVIDUAL; BILLING_DN=02882930849; DN1=02882930849;
TERM_ID=a002; MGW_ID=30848; SUB_PROFILE_ID=CD-local;
Add sub ID=30800; CATEGORY=INDIVIDUAL; BILLING_DN=02882930800; DN1=02882930800;
TERM_ID=a001; MGW_ID=30800; SUB_PROFILE_ID=CD-local;
Add sub ID=30801; CATEGORY=INDIVIDUAL; BILLING_DN=02882930801; DN1=02882930801;
TERM_ID=a002; MGW_ID=30800; SUB_PROFILE_ID=CD-local;
Add sub ID=30836; CATEGORY=INDIVIDUAL; BILLING_DN=02882930836; DN1=02882930836;
TERM_ID=a001; MGW_ID=30836; SUB_PROFILE_ID=CD-local;
Add sub ID=30837; CATEGORY=INDIVIDUAL; BILLING_DN=02882930837; DN1=02882930837;
TERM_ID=a002; MGW_ID=30836; SUB_PROFILE_ID=CD-local;
Add sub ID=36710; CATEGORY=INDIVIDUAL; BILLING_DN=02882936710; DN1=02882936710;
TERM_ID=a001; MGW_ID=36710; SUB_PROFILE_ID=CD-local;
Add sub ID=36711; CATEGORY=INDIVIDUAL; BILLING_DN=02882936711; DN1=02882936711;
TERM_ID=a002; MGW_ID=36710; SUB_PROFILE_ID=CD-local;

```

```

Equip subscriber-termination ID=30730;
Equip subscriber-termination ID=30731;
Equip subscriber-termination ID=30736;
Equip subscriber-termination ID=30737;
Equip subscriber-termination ID=30848;
Equip subscriber-termination ID=30849;
Equip subscriber-termination ID=30800;
Equip subscriber-termination ID=30801;
Equip subscriber-termination ID=30836;
Equip subscriber-termination ID=30837;
Equip subscriber-termination ID=36710;
Equip subscriber-termination ID=36711;

```

```

Control mgw id=30730; mode=forced; target-state=ins;
Control mgw id=30736; mode=forced; target-state=ins;
Control mgw id=30848; mode=forced; target-state=ins;
Control mgw id=30800; mode=forced; target-state=ins;
Control mgw id=30836; mode=forced; target-state=ins;
Control mgw id=36710; mode=forced; target-state=ins;

```

```

Control subscriber-termination mode=forced; target-state=ins; ID=30730;
Control subscriber-termination mode=forced; target-state=ins; ID=30731;
Control subscriber-termination mode=forced; target-state=ins; ID=30736;
Control subscriber-termination mode=forced; target-state=ins; ID=30737;
Control subscriber-termination mode=forced; target-state=ins; ID=30848;
Control subscriber-termination mode=forced; target-state=ins; ID=30849;
Control subscriber-termination mode=forced; target-state=ins; ID=30800;
Control subscriber-termination mode=forced; target-state=ins; ID=30801;
Control subscriber-termination mode=forced; target-state=ins; ID=30836;
Control subscriber-termination mode=forced; target-state=ins; ID=30837;
Control subscriber-termination mode=forced; target-state=ins; ID=36710;
Control subscriber-termination mode=forced; target-state=ins; ID=36711;

```

```

Add sub-service-profile service-id=123; sub-ID=30730;
Add sub-service-profile service-id=123; sub-ID=30731;
Add sub-service-profile service-id=123; sub-ID=30736;
Add sub-service-profile service-id=123; sub-ID=30737;
Add sub-service-profile service-id=123; sub-ID=30848;
Add sub-service-profile service-id=123; sub-ID=30849;
Add sub-service-profile service-id=123; sub-ID=30800;
Add sub-service-profile service-id=123; sub-ID=30801;
Add sub-service-profile service-id=123; sub-ID=30836;
Add sub-service-profile service-id=123; sub-ID=30837;
Add sub-service-profile service-id=123; sub-ID=36710;
Add sub-service-profile service-id=123; sub-ID=36711;

```

```

Add dial-plan ID=CD01; DIGIT_STRING=8293073; DEST_ID= lchina028; MIN_DIGITS=8;
MAX_DIGITS=8; NOA=UNKNOWN;
Add dial-plan ID=CD01; DIGIT_STRING=8293084; DEST_ID= lchina028; MIN_DIGITS=8;
MAX_DIGITS=8; NOA=UNKNOWN;
Add dial-plan ID=CD01; DIGIT_STRING=8293080; DEST_ID= lchina028; MIN_DIGITS=8;
MAX_DIGITS=8; NOA=UNKNOWN;
Add dial-plan ID=CD01; DIGIT_STRING=8293083; DEST_ID= lchina028; MIN_DIGITS=8;
MAX_DIGITS=8; NOA=UNKNOWN;
Add dial-plan ID=CD02; DIGIT_STRING=8293073; DEST_ID= lchina028; MIN_DIGITS=8;
MAX_DIGITS=8; NOA=UNKNOWN;
Add dial-plan ID=CD02; DIGIT_STRING=8293084; DEST_ID= lchina028; MIN_DIGITS=8;
MAX_DIGITS=8; NOA=UNKNOWN;
Add dial-plan ID=CD02; DIGIT_STRING=8293080; DEST_ID= lchina028; MIN_DIGITS=8;
MAX_DIGITS=8; NOA=UNKNOWN;
Add dial-plan ID=CD02; DIGIT_STRING=8293083; DEST_ID= lchina028; MIN_DIGITS=8;
MAX_DIGITS=8; NOA=UNKNOWN;
Add dial-plan ID=CD03; DIGIT_STRING=8293073; DEST_ID= lchina028; MIN_DIGITS=8;
MAX_DIGITS=8; NOA=UNKNOWN;
Add dial-plan ID=CD03; DIGIT_STRING=8293084; DEST_ID= lchina028; MIN_DIGITS=8;
MAX_DIGITS=8; NOA=UNKNOWN;
Add dial-plan ID=CD03; DIGIT_STRING=8293080; DEST_ID= lchina028; MIN_DIGITS=8;
MAX_DIGITS=8; NOA=UNKNOWN;
Add dial-plan ID=CD03; DIGIT_STRING=8293083; DEST_ID= lchina028; MIN_DIGITS=8;
MAX_DIGITS=8; NOA=UNKNOWN;

```

```

Add mgw ID=30742; TSAP_ADDR=172.16.1.12; CALL_AGENT_ID=CA146; MGW_PROFILE_ID=komodo;
CALL_AGENT_CONTROL_PORT=2728; RGW=Y;
Add mgw ID=30732; TSAP_ADDR=172.16.1.8; CALL_AGENT_ID=CA146; MGW_PROFILE_ID=komodo;
CALL_AGENT_CONTROL_PORT=2728; RGW=Y;
Add mgw ID=30750; TSAP_ADDR=172.16.1.19; CALL_AGENT_ID=CA146; MGW_PROFILE_ID=komodo;
CALL_AGENT_CONTROL_PORT=2728; RGW=Y;
Add mgw ID=30772; TSAP_ADDR=172.16.1.24; CALL_AGENT_ID=CA146; MGW_PROFILE_ID=komodo;
CALL_AGENT_CONTROL_PORT=2728; RGW=Y;
Add mgw ID=30740; TSAP_ADDR=172.16.1.27; CALL_AGENT_ID=CA146; MGW_PROFILE_ID=komodo;
CALL_AGENT_CONTROL_PORT=2728; RGW=Y;
Add mgw ID=30764; TSAP_ADDR=172.16.1.28; CALL_AGENT_ID=CA146; MGW_PROFILE_ID=komodo;
CALL_AGENT_CONTROL_PORT=2728; RGW=Y;
Add mgw ID=30754; TSAP_ADDR=172.16.1.16; CALL_AGENT_ID=CA146; MGW_PROFILE_ID=komodo;
CALL_AGENT_CONTROL_PORT=2728; RGW=Y;
Add mgw ID=30758; TSAP_ADDR=172.30.1.5; CALL_AGENT_ID=CA146; MGW_PROFILE_ID=komodo;
CALL_AGENT_CONTROL_PORT=2728; RGW=Y;
Add mgw ID=30770; TSAP_ADDR=172.16.1.32; CALL_AGENT_ID=CA146; MGW_PROFILE_ID=komodo;
CALL_AGENT_CONTROL_PORT=2728; RGW=Y;
Add mgw ID=30774; TSAP_ADDR=172.16.1.33; CALL_AGENT_ID=CA146; MGW_PROFILE_ID=komodo;
CALL_AGENT_CONTROL_PORT=2728; RGW=Y;
Add mgw ID=30744; TSAP_ADDR=172.16.1.17; CALL_AGENT_ID=CA146; MGW_PROFILE_ID=komodo;
CALL_AGENT_CONTROL_PORT=2728; RGW=Y;
Add mgw ID=30777; TSAP_ADDR=172.30.1.4; CALL_AGENT_ID=CA146; MGW_PROFILE_ID=komodo;
CALL_AGENT_CONTROL_PORT=2728; RGW=Y;
Add mgw ID=30792; TSAP_ADDR=172.16.1.35; CALL_AGENT_ID=CA146; MGW_PROFILE_ID=komodo;
CALL_AGENT_CONTROL_PORT=2728; RGW=Y;
Add mgw ID=kom7; TSAP_ADDR=172.28.255.248; CALL_AGENT_ID=CA146; MGW_PROFILE_ID=komodo;
CALL_AGENT_CONTROL_PORT=2728; RGW=Y;

```

```

Add termination port-start=1; port-end=2; prefix=a00; type=line; mgw-id=30742
Add termination port-start=1; port-end=2; prefix=a00; type=line; mgw-id=30732
Add termination port-start=1; port-end=2; prefix=a00; type=line; mgw-id=30750
Add termination port-start=1; port-end=2; prefix=a00; type=line; mgw-id=30772

```

```
Add termination port-start=1; port-end=2; prefix=a00; type=line; mgw-id=30740
Add termination port-start=1; port-end=2; prefix=a00; type=line; mgw-id=30764
Add termination port-start=1; port-end=2; prefix=a00; type=line; mgw-id=30754
Add termination port-start=1; port-end=2; prefix=a00; type=line; mgw-id=30758
Add termination port-start=1; port-end=2; prefix=a00; type=line; mgw-id=30770
Add termination port-start=1; port-end=2; prefix=a00; type=line; mgw-id=30774
Add termination port-start=1; port-end=2; prefix=a00; type=line; mgw-id=30744
Add termination port-start=1; port-end=2; prefix=a00; type=line; mgw-id=30777
Add termination port-start=1; port-end=2; prefix=a00; type=line; mgw-id=30792
Add termination port-start=1; port-end=2; prefix=a00; type=line; mgw-id=kom7
```

```
Add sub ID=30742; CATEGORY=INDIVIDUAL; BILLING_DN=02882930742; DN1=02882930742;
TERM_ID=a001; MGW_ID=30742; SUB_PROFILE_ID=CD-int;
Add sub ID=30743; CATEGORY=INDIVIDUAL; BILLING_DN=02882930743; DN1=02882930743;
TERM_ID=a002; MGW_ID=30742; SUB_PROFILE_ID=CD-int;
Add sub ID=30732; CATEGORY=INDIVIDUAL; BILLING_DN=02882930732; DN1=02882930732;
TERM_ID=a001; MGW_ID=30732; SUB_PROFILE_ID=CD-local;
Add sub ID=30733; CATEGORY=INDIVIDUAL; BILLING_DN=02882930733; DN1=02882930733;
TERM_ID=a002; MGW_ID=30732; SUB_PROFILE_ID=CD-local;
Add sub ID=30750; CATEGORY=INDIVIDUAL; BILLING_DN=02882930750; DN1=02882930750;
TERM_ID=a001; MGW_ID=30750; SUB_PROFILE_ID=CD-local;
Add sub ID=30751; CATEGORY=INDIVIDUAL; BILLING_DN=02882930751; DN1=02882930751;
TERM_ID=a002; MGW_ID=30750; SUB_PROFILE_ID=CD-local;
Add sub ID=30772; CATEGORY=INDIVIDUAL; BILLING_DN=02882930772; DN1=02882930772;
TERM_ID=a001; MGW_ID=30772; SUB_PROFILE_ID=CD-local;
Add sub ID=30773; CATEGORY=INDIVIDUAL; BILLING_DN=02882930773; DN1=02882930773;
TERM_ID=a002; MGW_ID=30772; SUB_PROFILE_ID=CD-local;
Add sub ID=30740; CATEGORY=INDIVIDUAL; BILLING_DN=02882930740; DN1=02882930740;
TERM_ID=a001; MGW_ID=30740; SUB_PROFILE_ID=CD-local;
Add sub ID=30741; CATEGORY=INDIVIDUAL; BILLING_DN=02882930741; DN1=02882930741;
TERM_ID=a002; MGW_ID=30740; SUB_PROFILE_ID=CD-local;
Add sub ID=30764; CATEGORY=INDIVIDUAL; BILLING_DN=02882930764; DN1=02882930764;
TERM_ID=a001; MGW_ID=30764; SUB_PROFILE_ID=CD-local;
Add sub ID=30765; CATEGORY=INDIVIDUAL; BILLING_DN=02882930765; DN1=02882930765;
TERM_ID=a002; MGW_ID=30764; SUB_PROFILE_ID=CD-local;
Add sub ID=30754; CATEGORY=INDIVIDUAL; BILLING_DN=02882930754; DN1=02882930754;
TERM_ID=a001; MGW_ID=30754; SUB_PROFILE_ID=CD-local;
Add sub ID=30755; CATEGORY=INDIVIDUAL; BILLING_DN=02882930755; DN1=02882930755;
TERM_ID=a002; MGW_ID=30754; SUB_PROFILE_ID=CD-local;
Add sub ID=30758; CATEGORY=INDIVIDUAL; BILLING_DN=02882930758; DN1=02882930758;
TERM_ID=a001; MGW_ID=30758; SUB_PROFILE_ID=CD-local;
Add sub ID=30759; CATEGORY=INDIVIDUAL; BILLING_DN=02882930759; DN1=02882930759;
TERM_ID=a002; MGW_ID=30758; SUB_PROFILE_ID=CD-local;
Add sub ID=30770; CATEGORY=INDIVIDUAL; BILLING_DN=02882930770; DN1=02882930770;
TERM_ID=a001; MGW_ID=30770; SUB_PROFILE_ID=CD-local;
Add sub ID=30771; CATEGORY=INDIVIDUAL; BILLING_DN=02882930771; DN1=02882930771;
TERM_ID=a002; MGW_ID=30770; SUB_PROFILE_ID=CD-local;
Add sub ID=30774; CATEGORY=INDIVIDUAL; BILLING_DN=02882930774; DN1=02882930774;
TERM_ID=a001; MGW_ID=30774; SUB_PROFILE_ID=CD-local;
Add sub ID=30775; CATEGORY=INDIVIDUAL; BILLING_DN=02882930775; DN1=02882930775;
TERM_ID=a002; MGW_ID=30774; SUB_PROFILE_ID=CD-local;
Add sub ID=30744; CATEGORY=INDIVIDUAL; BILLING_DN=02882930744; DN1=02882930744;
TERM_ID=a001; MGW_ID=30744; SUB_PROFILE_ID=CD-local;
Add sub ID=30745; CATEGORY=INDIVIDUAL; BILLING_DN=02882930745; DN1=02882930745;
TERM_ID=a002; MGW_ID=30744; SUB_PROFILE_ID=CD-local;
Add sub ID=30777; CATEGORY=INDIVIDUAL; BILLING_DN=02882930777; DN1=02882930777;
TERM_ID=a001; MGW_ID=30777; SUB_PROFILE_ID=CD-local;
Add sub ID=30776; CATEGORY=INDIVIDUAL; BILLING_DN=02882930776; DN1=02882930776;
TERM_ID=a002; MGW_ID=30777; SUB_PROFILE_ID=CD-local;
Add sub ID=30792; CATEGORY=INDIVIDUAL; BILLING_DN=02882930792; DN1=02882930792;
TERM_ID=a001; MGW_ID=30792; SUB_PROFILE_ID=CD-local;
Add sub ID=30793; CATEGORY=INDIVIDUAL; BILLING_DN=02882930793; DN1=02882930793;
TERM_ID=a002; MGW_ID=30792; SUB_PROFILE_ID=CD-local;
```

```
Add sub ID=kom7_1; CATEGORY=INDIVIDUAL; BILLING_DN=08386810001; DN1=08386810001;
TERM_ID=a001; MGW_ID=kom7; SUB_PROFILE_ID=CD-int;
Add sub ID=kom7_2; CATEGORY=INDIVIDUAL; BILLING_DN=08386810002; DN1=08386810002;
TERM_ID=a002; MGW_ID=kom7; SUB_PROFILE_ID=CD-int;
Add sub ID=kom6_1; CATEGORY=INDIVIDUAL; BILLING_DN=08166810001; DN1=08166810001;
TERM_ID=a001; MGW_ID=kom6; SUB_PROFILE_ID=CD-int;
Add sub ID=kom6_2; CATEGORY=INDIVIDUAL; BILLING_DN=08166810002; DN1=08166810002;
TERM_ID=a002; MGW_ID=kom6; SUB_PROFILE_ID=CD-int;
```

```
Equip subscriber-termination ID=30742;
Equip subscriber-termination ID=30743;
Equip subscriber-termination ID=30732;
Equip subscriber-termination ID=30733;
Equip subscriber-termination ID=30750;
Equip subscriber-termination ID=30751;
Equip subscriber-termination ID=30772;
Equip subscriber-termination ID=30773;
Equip subscriber-termination ID=30740;
Equip subscriber-termination ID=30741;
Equip subscriber-termination ID=30764;
Equip subscriber-termination ID=30765;
Equip subscriber-termination ID=30754;
Equip subscriber-termination ID=30755;
Equip subscriber-termination ID=30758;
Equip subscriber-termination ID=30759;
Equip subscriber-termination ID=30770;
Equip subscriber-termination ID=30771;
Equip subscriber-termination ID=30774;
Equip subscriber-termination ID=30775;
Equip subscriber-termination ID=30744;
Equip subscriber-termination ID=30745;
Equip subscriber-termination ID=30777;
Equip subscriber-termination ID=30776;
Equip subscriber-termination ID=30792;
Equip subscriber-termination ID=30793;
```

```
Control mgw id=30742; mode=forced; target-state=ins;
Control mgw id=30732; mode=forced; target-state=ins;
Control mgw id=30750; mode=forced; target-state=ins;
Control mgw id=30772; mode=forced; target-state=ins;
Control mgw id=30740; mode=forced; target-state=ins;
Control mgw id=30764; mode=forced; target-state=ins;
Control mgw id=30754; mode=forced; target-state=ins;
Control mgw id=30758; mode=forced; target-state=ins;
Control mgw id=30770; mode=forced; target-state=ins;
Control mgw id=30774; mode=forced; target-state=ins;
Control mgw id=30744; mode=forced; target-state=ins;
Control mgw id=30777; mode=forced; target-state=ins;
Control mgw id=30792; mode=forced; target-state=ins;
```

```
Control subscriber-termination mode=forced; target-state=ins; ID=30742;
Control subscriber-termination mode=forced; target-state=ins; ID=30743;
Control subscriber-termination mode=forced; target-state=ins; ID=30732;
Control subscriber-termination mode=forced; target-state=ins; ID=30733;
Control subscriber-termination mode=forced; target-state=ins; ID=30750;
Control subscriber-termination mode=forced; target-state=ins; ID=30751;
Control subscriber-termination mode=forced; target-state=ins; ID=30772;
Control subscriber-termination mode=forced; target-state=ins; ID=30773;
```

```
Control subscriber-termination mode=forced; target-state=ins; ID=30740;
Control subscriber-termination mode=forced; target-state=ins; ID=30741;
Control subscriber-termination mode=forced; target-state=ins; ID=30764;
Control subscriber-termination mode=forced; target-state=ins; ID=30765;
Control subscriber-termination mode=forced; target-state=ins; ID=30754;
Control subscriber-termination mode=forced; target-state=ins; ID=30755;
Control subscriber-termination mode=forced; target-state=ins; ID=30758;
Control subscriber-termination mode=forced; target-state=ins; ID=30759;
Control subscriber-termination mode=forced; target-state=ins; ID=30770;
Control subscriber-termination mode=forced; target-state=ins; ID=30771;
Control subscriber-termination mode=forced; target-state=ins; ID=30774;
Control subscriber-termination mode=forced; target-state=ins; ID=30775;
Control subscriber-termination mode=forced; target-state=ins; ID=30744;
Control subscriber-termination mode=forced; target-state=ins; ID=30745;
Control subscriber-termination mode=forced; target-state=ins; ID=30777;
Control subscriber-termination mode=forced; target-state=ins; ID=30776;
Control subscriber-termination mode=forced; target-state=ins; ID=30792;
Control subscriber-termination mode=forced; target-state=ins; ID=30793;
```

```
Add sub-service-profile service-id=123; sub-ID=30742;
Add sub-service-profile service-id=123; sub-ID=30743;
Add sub-service-profile service-id=123; sub-ID=30732;
Add sub-service-profile service-id=123; sub-ID=30733;
Add sub-service-profile service-id=123; sub-ID=30750;
Add sub-service-profile service-id=123; sub-ID=30751;
Add sub-service-profile service-id=123; sub-ID=30772;
Add sub-service-profile service-id=123; sub-ID=30773;
Add sub-service-profile service-id=123; sub-ID=30740;
Add sub-service-profile service-id=123; sub-ID=30741;
Add sub-service-profile service-id=123; sub-ID=30764;
Add sub-service-profile service-id=123; sub-ID=30765;
Add sub-service-profile service-id=123; sub-ID=30754;
Add sub-service-profile service-id=123; sub-ID=30755;
Add sub-service-profile service-id=123; sub-ID=30758;
Add sub-service-profile service-id=123; sub-ID=30759;
Add sub-service-profile service-id=123; sub-ID=30770;
Add sub-service-profile service-id=123; sub-ID=30771;
Add sub-service-profile service-id=123; sub-ID=30774;
Add sub-service-profile service-id=123; sub-ID=30775;
Add sub-service-profile service-id=123; sub-ID=30744;
Add sub-service-profile service-id=123; sub-ID=30745;
Add sub-service-profile service-id=123; sub-ID=30777;
Add sub-service-profile service-id=123; sub-ID=30776;
Add sub-service-profile service-id=123; sub-ID=30792;
Add sub-service-profile service-id=123; sub-ID=30793;
```

```
Add dial-plan ID=CD01; DIGIT_STRING=829307; DEST_ID= lchina028; MIN_DIGITS=8;
MAX_DIGITS=8; NOA=UNKNOWN;
Add dial-plan ID=CD02; DIGIT_STRING=829307; DEST_ID= lchina028; MIN_DIGITS=8;
MAX_DIGITS=8; NOA=UNKNOWN;
Add dial-plan ID=CD03; DIGIT_STRING=829307; DEST_ID= lchina028; MIN_DIGITS=8;
MAX_DIGITS=8; NOA=UNKNOWN;
```

```
Delete dial-plan ID=CD01; DIGIT_STRING=8293071; NOA=UNKNOWN;
Delete dial-plan ID=CD01; DIGIT_STRING=8293072; NOA=UNKNOWN;
Delete dial-plan ID=CD01; DIGIT_STRING=8293073; NOA=UNKNOWN;
Delete dial-plan ID=CD01; DIGIT_STRING=8293079; NOA=UNKNOWN;
```

```
Delete dial-plan ID=CD02; DIGIT_STRING=8293071; NOA=UNKNOWN;
Delete dial-plan ID=CD02; DIGIT_STRING=8293072; NOA=UNKNOWN;
Delete dial-plan ID=CD02; DIGIT_STRING=8293073; NOA=UNKNOWN;
Delete dial-plan ID=CD02; DIGIT_STRING=8293079; NOA=UNKNOWN;
```

```
Delete dial-plan ID=CD03; DIGIT_STRING=8293071; NOA=UNKNOWN;
Delete dial-plan ID=CD03; DIGIT_STRING=8293072; NOA=UNKNOWN;
Delete dial-plan ID=CD03; DIGIT_STRING=8293073; NOA=UNKNOWN;
Delete dial-plan ID=CD03; DIGIT_STRING=8293079; NOA=UNKNOWN;
```

```
*****
```

```
Add mgw ID=30738; TSAP_ADDR=172.16.1.37; CALL_AGENT_ID=CA146; MGW_PROFILE_ID=komodo;
CALL_AGENT_CONTROL_PORT=2728; RGW=Y;
Add mgw ID=30808; TSAP_ADDR=172.16.1.13; CALL_AGENT_ID=CA146; MGW_PROFILE_ID=komodo;
CALL_AGENT_CONTROL_PORT=2728; RGW=Y;
Add mgw ID=30810; TSAP_ADDR=172.16.1.5; CALL_AGENT_ID=CA146; MGW_PROFILE_ID=komodo;
CALL_AGENT_CONTROL_PORT=2728; RGW=Y;
Add mgw ID=30816; TSAP_ADDR=172.16.1.10; CALL_AGENT_ID=CA146; MGW_PROFILE_ID=komodo;
CALL_AGENT_CONTROL_PORT=2728; RGW=Y;
Add mgw ID=30818; TSAP_ADDR=172.16.1.6; CALL_AGENT_ID=CA146; MGW_PROFILE_ID=komodo;
CALL_AGENT_CONTROL_PORT=2728; RGW=Y;
Add mgw ID=30854; TSAP_ADDR=172.16.1.4; CALL_AGENT_ID=CA146; MGW_PROFILE_ID=komodo;
CALL_AGENT_CONTROL_PORT=2728; RGW=Y;
Add mgw ID=30862; TSAP_ADDR=172.30.1.26; CALL_AGENT_ID=CA146; MGW_PROFILE_ID=komodo;
CALL_AGENT_CONTROL_PORT=2728; RGW=Y;
Add mgw ID=30866; TSAP_ADDR=172.16.1.38; CALL_AGENT_ID=CA146; MGW_PROFILE_ID=komodo;
CALL_AGENT_CONTROL_PORT=2728; RGW=Y;
Add mgw ID=30780; TSAP_ADDR=172.30.1.104; CALL_AGENT_ID=CA146; MGW_PROFILE_ID=komodo;
CALL_AGENT_CONTROL_PORT=2728; RGW=Y;
Add mgw ID=30870; TSAP_ADDR=172.16.1.57; CALL_AGENT_ID=CA146; MGW_PROFILE_ID=komodo;
CALL_AGENT_CONTROL_PORT=2728; RGW=Y;
```

```
Add termination port-start=1; port-end=2; prefix=a00; type=line; mgw-id=30738
Add termination port-start=1; port-end=2; prefix=a00; type=line; mgw-id=30808
Add termination port-start=1; port-end=2; prefix=a00; type=line; mgw-id=30810
Add termination port-start=1; port-end=2; prefix=a00; type=line; mgw-id=30816
Add termination port-start=1; port-end=2; prefix=a00; type=line; mgw-id=30818
Add termination port-start=1; port-end=2; prefix=a00; type=line; mgw-id=30854
Add termination port-start=1; port-end=2; prefix=a00; type=line; mgw-id=30862
Add termination port-start=1; port-end=2; prefix=a00; type=line; mgw-id=30866
Add termination port-start=1; port-end=2; prefix=a00; type=line; mgw-id=30780
Add termination port-start=1; port-end=2; prefix=a00; type=line; mgw-id=30870
```

```
Add sub ID=30738; CATEGORY=INDIVIDUAL; BILLING_DN=02882930738; DN1=02882930738;
TERM_ID=a001; MGW_ID=30738; SUB_PROFILE_ID=CD-int;
Add sub ID=30739; CATEGORY=INDIVIDUAL; BILLING_DN=02882930739; DN1=02882930739;
TERM_ID=a002; MGW_ID=30738; SUB_PROFILE_ID=CD-int;
Add sub ID=30808; CATEGORY=INDIVIDUAL; BILLING_DN=02882930808; DN1=02882930808;
TERM_ID=a001; MGW_ID=30808; SUB_PROFILE_ID=CD-local;
Add sub ID=30809; CATEGORY=INDIVIDUAL; BILLING_DN=02882930809; DN1=02882930809;
TERM_ID=a002; MGW_ID=30808; SUB_PROFILE_ID=CD-local;
Add sub ID=30810; CATEGORY=INDIVIDUAL; BILLING_DN=02882930810; DN1=02882930810;
TERM_ID=a001; MGW_ID=30810; SUB_PROFILE_ID=CD-local;
Add sub ID=30811; CATEGORY=INDIVIDUAL; BILLING_DN=02882930811; DN1=02882930811;
TERM_ID=a002; MGW_ID=30810; SUB_PROFILE_ID=CD-local;
Add sub ID=30816; CATEGORY=INDIVIDUAL; BILLING_DN=02882930816; DN1=02882930816;
TERM_ID=a001; MGW_ID=30816; SUB_PROFILE_ID=CD-local;
Add sub ID=30817; CATEGORY=INDIVIDUAL; BILLING_DN=02882930817; DN1=02882930817;
TERM_ID=a002; MGW_ID=30816; SUB_PROFILE_ID=CD-local;
Add sub ID=30818; CATEGORY=INDIVIDUAL; BILLING_DN=02882930818; DN1=02882930818;
TERM_ID=a001; MGW_ID=30818; SUB_PROFILE_ID=CD-local;
Add sub ID=30819; CATEGORY=INDIVIDUAL; BILLING_DN=02882930819; DN1=02882930819;
TERM_ID=a002; MGW_ID=30818; SUB_PROFILE_ID=CD-local;
Add sub ID=30854; CATEGORY=INDIVIDUAL; BILLING_DN=02882930854; DN1=02882930854;
TERM_ID=a001; MGW_ID=30854; SUB_PROFILE_ID=CD-local;
```

```

Add sub ID=30855; CATEGORY=INDIVIDUAL; BILLING_DN=02882930855; DN1=02882930855;
TERM_ID=a002; MGW_ID=30854; SUB_PROFILE_ID=CD-local;
Add sub ID=30862; CATEGORY=INDIVIDUAL; BILLING_DN=02882930862; DN1=02882930862;
TERM_ID=a001; MGW_ID=30862; SUB_PROFILE_ID=CD-local;
Add sub ID=30863; CATEGORY=INDIVIDUAL; BILLING_DN=02882930863; DN1=02882930863;
TERM_ID=a002; MGW_ID=30862; SUB_PROFILE_ID=CD-local;
Add sub ID=30866; CATEGORY=INDIVIDUAL; BILLING_DN=02882930866; DN1=02882930866;
TERM_ID=a001; MGW_ID=30866; SUB_PROFILE_ID=CD-local;
Add sub ID=30867; CATEGORY=INDIVIDUAL; BILLING_DN=02882930867; DN1=02882930867;
TERM_ID=a002; MGW_ID=30866; SUB_PROFILE_ID=CD-local;
Add sub ID=30780; CATEGORY=INDIVIDUAL; BILLING_DN=02882930780; DN1=02882930780;
TERM_ID=a001; MGW_ID=30780; SUB_PROFILE_ID=CD-local;
Add sub ID=30781; CATEGORY=INDIVIDUAL; BILLING_DN=02882930781; DN1=02882930781;
TERM_ID=a002; MGW_ID=30780; SUB_PROFILE_ID=CD-local;
Add sub ID=30870; CATEGORY=INDIVIDUAL; BILLING_DN=02882930870; DN1=02882930870;
TERM_ID=a001; MGW_ID=30870; SUB_PROFILE_ID=CD-local;
Add sub ID=30871; CATEGORY=INDIVIDUAL; BILLING_DN=02882930871; DN1=02882930871;
TERM_ID=a002; MGW_ID=30870; SUB_PROFILE_ID=CD-local;

```

```

Equip subscriber-termination ID=30738;
Equip subscriber-termination ID=30739;
Equip subscriber-termination ID=30808;
Equip subscriber-termination ID=30809;
Equip subscriber-termination ID=30810;
Equip subscriber-termination ID=30811;
Equip subscriber-termination ID=30816;
Equip subscriber-termination ID=30817;
Equip subscriber-termination ID=30818;
Equip subscriber-termination ID=30819;
Equip subscriber-termination ID=30854;
Equip subscriber-termination ID=30855;
Equip subscriber-termination ID=30862;
Equip subscriber-termination ID=30863;
Equip subscriber-termination ID=30866;
Equip subscriber-termination ID=30867;
Equip subscriber-termination ID=30780;
Equip subscriber-termination ID=30781;
Equip subscriber-termination ID=30870;
Equip subscriber-termination ID=30871;

```

```

Control mgw id=30738; mode=forced; target-state=ins;
Control mgw id=30808; mode=forced; target-state=ins;
Control mgw id=30810; mode=forced; target-state=ins;
Control mgw id=30816; mode=forced; target-state=ins;
Control mgw id=30818; mode=forced; target-state=ins;
Control mgw id=30854; mode=forced; target-state=ins;
Control mgw id=30862; mode=forced; target-state=ins;
Control mgw id=30866; mode=forced; target-state=ins;
Control mgw id=30780; mode=forced; target-state=ins;
Control mgw id=30870; mode=forced; target-state=ins;

```

```

Control subscriber-termination mode=forced; target-state=ins; ID=30738;
Control subscriber-termination mode=forced; target-state=ins; ID=30739;
Control subscriber-termination mode=forced; target-state=ins; ID=30808;
Control subscriber-termination mode=forced; target-state=ins; ID=30809;
Control subscriber-termination mode=forced; target-state=ins; ID=30810;
Control subscriber-termination mode=forced; target-state=ins; ID=30811;
Control subscriber-termination mode=forced; target-state=ins; ID=30816;
Control subscriber-termination mode=forced; target-state=ins; ID=30817;
Control subscriber-termination mode=forced; target-state=ins; ID=30818;
Control subscriber-termination mode=forced; target-state=ins; ID=30819;
Control subscriber-termination mode=forced; target-state=ins; ID=30854;

```

```

Control subscriber-termination mode=forced; target-state=ins; ID=30855;
Control subscriber-termination mode=forced; target-state=ins; ID=30862;
Control subscriber-termination mode=forced; target-state=ins; ID=30863;
Control subscriber-termination mode=forced; target-state=ins; ID=30866;
Control subscriber-termination mode=forced; target-state=ins; ID=30867;
Control subscriber-termination mode=forced; target-state=ins; ID=30780;
Control subscriber-termination mode=forced; target-state=ins; ID=30781;
Control subscriber-termination mode=forced; target-state=ins; ID=30870;
Control subscriber-termination mode=forced; target-state=ins; ID=30871;

```

```

Add sub-service-profile service-id=123; sub-ID=30738;
Add sub-service-profile service-id=123; sub-ID=30739;
Add sub-service-profile service-id=123; sub-ID=30808;
Add sub-service-profile service-id=123; sub-ID=30809;
Add sub-service-profile service-id=123; sub-ID=30810;
Add sub-service-profile service-id=123; sub-ID=30811;
Add sub-service-profile service-id=123; sub-ID=30816;
Add sub-service-profile service-id=123; sub-ID=30817;
Add sub-service-profile service-id=123; sub-ID=30818;
Add sub-service-profile service-id=123; sub-ID=30819;
Add sub-service-profile service-id=123; sub-ID=30854;
Add sub-service-profile service-id=123; sub-ID=30855;
Add sub-service-profile service-id=123; sub-ID=30862;
Add sub-service-profile service-id=123; sub-ID=30863;
Add sub-service-profile service-id=123; sub-ID=30866;
Add sub-service-profile service-id=123; sub-ID=30867;
Add sub-service-profile service-id=123; sub-ID=30780;
Add sub-service-profile service-id=123; sub-ID=30781;
Add sub-service-profile service-id=123; sub-ID=30870;
Add sub-service-profile service-id=123; sub-ID=30871;

```

```

Add dial-plan ID=CD01; DIGIT_STRING=829308; DEST_ID= lchina028; MIN_DIGITS=8;
MAX_DIGITS=8; NOA=UNKNOWN;
Add dial-plan ID=CD02; DIGIT_STRING=829308; DEST_ID= lchina028; MIN_DIGITS=8;
MAX_DIGITS=8; NOA=UNKNOWN;
Add dial-plan ID=CD03; DIGIT_STRING=829308; DEST_ID= lchina028; MIN_DIGITS=8;
MAX_DIGITS=8; NOA=UNKNOWN;

```

```

Delete dial-plan ID=CD01; DIGIT_STRING=8293083; NOA=UNKNOWN;
Delete dial-plan ID=CD01; DIGIT_STRING=8293084; NOA=UNKNOWN;
Delete dial-plan ID=CD02; DIGIT_STRING=8293083; NOA=UNKNOWN;
Delete dial-plan ID=CD02; DIGIT_STRING=8293084; NOA=UNKNOWN;
Delete dial-plan ID=CD03; DIGIT_STRING=8293083; NOA=UNKNOWN;
Delete dial-plan ID=CD03; DIGIT_STRING=8293084; NOA=UNKNOWN;

```

```

*****

```

```

add dial-plan digit-string=8293070; dest-id=02; MIN_DIGITS=8; MAX_DIGITS=8; NOA=UNKNOWN;
id=CD01
add dial-plan digit-string=8293098; dest-id=02; MIN_DIGITS=8; MAX_DIGITS=8; NOA=UNKNOWN;
id=CD01
add dial-plan digit-string=8293097; dest-id=02; MIN_DIGITS=8; MAX_DIGITS=8; NOA=UNKNOWN;
id=CD01
add dial-plan digit-string=8293070; dest-id=02; MIN_DIGITS=8; MAX_DIGITS=8; NOA=UNKNOWN;
id=CD02
add dial-plan digit-string=8293098; dest-id=02; MIN_DIGITS=8; MAX_DIGITS=8; NOA=UNKNOWN;
id=CD02
add dial-plan digit-string=8293097; dest-id=02; MIN_DIGITS=8; MAX_DIGITS=8; NOA=UNKNOWN;
id=CD02
add dial-plan digit-string=8293070; dest-id=02; MIN_DIGITS=8; MAX_DIGITS=8; NOA=UNKNOWN;
id=CD03

```



```

add dial-plan digit-string=8293098; dest-id=02; MIN_DIGITS=8; MAX_DIGITS=8; NOA=UNKNOWN;
id=CD03
add dial-plan digit-string=8293097; dest-id=02; MIN_DIGITS=8; MAX_DIGITS=8; NOA=UNKNOWN;
id=CD03

Delete dial-plan id=CD01; DIGIT_STRING=8293095; noa=UNKNOWN;
Delete dial-plan id=CD01; DIGIT_STRING=8293096; noa=UNKNOWN;
Delete dial-plan id=CD01; DIGIT_STRING=8293097; noa=UNKNOWN;
Delete dial-plan id=CD01; DIGIT_STRING=8293098; noa=UNKNOWN;
Delete dial-plan id=CD01; DIGIT_STRING=82930994; noa=UNKNOWN;
Delete dial-plan id=CD01; DIGIT_STRING=82930999; noa=UNKNOWN;

Delete dial-plan id=CD02; DIGIT_STRING=8293095; noa=UNKNOWN;
Delete dial-plan id=CD02; DIGIT_STRING=8293096; noa=UNKNOWN;
Delete dial-plan id=CD02; DIGIT_STRING=8293097; noa=UNKNOWN;
Delete dial-plan id=CD02; DIGIT_STRING=8293098; noa=UNKNOWN;
Delete dial-plan id=CD02; DIGIT_STRING=82930994; noa=UNKNOWN;
Delete dial-plan id=CD02; DIGIT_STRING=82930999; noa=UNKNOWN;

Delete dial-plan id=CD03; DIGIT_STRING=8293095; noa=UNKNOWN;
Delete dial-plan id=CD03; DIGIT_STRING=8293096; noa=UNKNOWN;
Delete dial-plan id=CD03; DIGIT_STRING=8293097; noa=UNKNOWN;
Delete dial-plan id=CD03; DIGIT_STRING=8293098; noa=UNKNOWN;
Delete dial-plan id=CD03; DIGIT_STRING=82930994; noa=UNKNOWN;
Delete dial-plan id=CD03; DIGIT_STRING=82930999; noa=UNKNOWN;

Add dial-plan ID=CD01; DIGIT_STRING=829309; DEST_ID=lchina028; MIN_DIGITS=8; MAX_DIGITS=8;
NOA=UNKNOWN;
Add dial-plan ID=CD02; DIGIT_STRING=829309; DEST_ID=lchina028; MIN_DIGITS=8; MAX_DIGITS=8;
NOA=UNKNOWN;
Add dial-plan ID=CD03; DIGIT_STRING=829309; DEST_ID=lchina028; MIN_DIGITS=8; MAX_DIGITS=8;
NOA=UNKNOWN;

Add dial-plan ID=CD01; DIGIT_STRING=8293671; DEST_ID=lchina028; MIN_DIGITS=8;
MAX_DIGITS=8; NOA=UNKNOWN;
Add dial-plan ID=CD02; DIGIT_STRING=8293671; DEST_ID=lchina028; MIN_DIGITS=8;
MAX_DIGITS=8; NOA=UNKNOWN;
Add dial-plan ID=CD03; DIGIT_STRING=8293671; DEST_ID=lchina028; MIN_DIGITS=8;
MAX_DIGITS=8; NOA=UNKNOWN;

change sub id=30776; sub-profile-id=CD-nat;
change sub id=30777; sub-profile-id=CD-nat

add mgw ID=30768; TSAP_ADDR=172.16.1.104;
CALL_AGENT_ID=CA146;MGW_PROFILE_ID=komodo;CALL_AGENT_CONTROL_PORT=2728;
RGW=Y;TGW=N;NAS=N;IAD=N;PBX=N;ANS=N;IVR=N;MGW_MONITORING_ENABLED=Y;OPER_STATUS=NF;

add termination port-start=1; port-end=2; prefix=a00; type=line; mgw-id=30768;

add subscriber
ID=30769;CATEGORY=INDIVIDUAL;STATUS=ACTIVE;COUNTRY=CHN;BILLING_DN=02882930769;DN1=02882930
769;PRIVACY=NONE;RING_TYPE_DN1=1;TERM_ID=a002;MGW_ID=30768;PIC1=NONE;PIC2=NONE;PIC3=NONE;G
RP=N;USAGE_SENS=Y;SUB_PROFILE_ID=CD-nat;TERM_TYPE=TERM;IMMEDIATE_RELEASE=N;TERMINATING_IMM
EDIATE_REL=N;

add subscriber
ID=30768;CATEGORY=INDIVIDUAL;STATUS=ACTIVE;COUNTRY=USA;BILLING_DN=02882930768;DN1=02882930
768;PRIVACY=NONE;RING_TYPE_DN1=1;TERM_ID=a001;MGW_ID=30768;PIC1=NONE;PIC2=NONE;PIC3=NONE;G
RP=N;USAGE_SENS=Y;SUB_PROFILE_ID=CD-nat;TERM_TYPE=TERM;IMMEDIATE_RELEASE=N;TERMINATING_IMM
EDIATE_REL=N;

```

```

add mgw ID=30966;
TSAP_ADDR=172.28.255.246; CALL_AGENT_ID=CA146; MGW_PROFILE_ID=komodo; STATUS=INS; CALL_AGENT_C
ONTROL_PORT=2728; RGW=Y; TGW=N; NAS=N; IAD=N; PBX=N; ANS=N; IVR=N; MGW_MONITORING_ENABLED=Y; OPER_S
TATUS=NF;

add termination port-start=1; port-end=2; prefix=a00; type=line; mgw-id=30966;

add sub
ID=30966; CATEGORY=INDIVIDUAL; STATUS=ACTIVE; BILLING_DN=02882930966; DN1=02882930966; PRIVACY=
NONE; TERM_ID=a001; MGW_ID=30966; PIC1=NONE; PIC2=NONE; PIC3=NONE; GRP=N; USAGE_SENS=Y; SUB_PROFIL
E_ID=CD-nat; TERM_TYPE=TERM; IMMEDIATE_RELEASE=N; TERMINATING_IMMEDIATE_REL=N;

add sub
ID=30967; CATEGORY=INDIVIDUAL; STATUS=ACTIVE; BILLING_DN=02882930967; DN1=02882930967; PRIVACY=
NONE; TERM_ID=a002; MGW_ID=30966; PIC1=NONE; PIC2=NONE; PIC3=NONE; GRP=N; USAGE_SENS=Y; SUB_PROFIL
E_ID=CD-nat; TERM_TYPE=TERM; IMMEDIATE_RELEASE=N; TERMINATING_IMMEDIATE_REL=N;

add mgw ID=30760; TSAP_ADDR=172.16.1.114; CALL_AGENT_ID=CA146; MGW_PROFILE_ID=komodo;
STATUS=INS; CALL_AGENT_CONTROL_PORT=2728; RGW=Y; TGW=N; NAS=N; IAD=N; PBX=N; ANS=N; IVR=N;
MGW_MONITORING_ENABLED=Y; OPER_STATUS=NF;

add termination port-start=1; port-end=2; prefix=a00; type=line; mgw-id =30760

add subscriber ID=30760; CATEGORY=INDIVIDUAL; STATUS=ACTIVE; BILLING_DN=02882930760;
DN1=02882930760; PRIVACY=NONE; TERM_ID=a001; MGW_ID=30760; PIC1=NONE; PIC2=NONE;
PIC3=NONE; GRP=N; USAGE_SENS=Y; SUB_PROFILE_ID=CD-local; TERM_TYPE=TERM;
IMMEDIATE_RELEASE=N; TERMINATING_IMMEDIATE_REL=N;

add subscriber ID=30761; CATEGORY=INDIVIDUAL; STATUS=ACTIVE; BILLING_DN=02882930761;
DN1=02882930761; PRIVACY=NONE; TERM_ID=a002; MGW_ID=30760; PIC1=NONE; PIC2=NONE;
PIC3=NONE; GRP=N; USAGE_SENS=Y; SUB_PROFILE_ID=CD-local; TERM_TYPE=TERM;
IMMEDIATE_RELEASE=N; TERMINATING_IMMEDIATE_REL=N;

add mgw ID=30824; TSAP_ADDR=172.16.1.118; CALL_AGENT_ID=CA146; MGW_PROFILE_ID=komodo;
STATUS=INS; CALL_AGENT_CONTROL_PORT=2728; RGW=Y; TGW=N; NAS=N; IAD=N; PBX=N; ANS=N; IVR=N;
MGW_MONITORING_ENABLED=Y; OPER_STATUS=NF;

add termination port-start=1; port-end=2; prefix=a00; type=line; mgw-id =30824;

add subscriber ID=30824; CATEGORY=INDIVIDUAL; STATUS=ACTIVE; BILLING_DN=02882930824;
DN1=02882930824; PRIVACY=NONE; TERM_ID=a001; MGW_ID=30824; PIC1=NONE; PIC2=NONE;
PIC3=NONE; GRP=N; USAGE_SENS=Y; SUB_PROFILE_ID=CD-local; TERM_TYPE=TERM;
IMMEDIATE_RELEASE=N; TERMINATING_IMMEDIATE_REL=N;

add subscriber ID=30825; CATEGORY=INDIVIDUAL; STATUS=ACTIVE; BILLING_DN=02882930825;
DN1=02882930825; PRIVACY=NONE; TERM_ID=a002; MGW_ID=30824; PIC1=NONE; PIC2=NONE;
PIC3=NONE; GRP=N; USAGE_SENS=Y; SUB_PROFILE_ID=CD-local; TERM_TYPE=TERM;
IMMEDIATE_RELEASE=N; TERMINATING_IMMEDIATE_REL=N;

add mgw ID=36750; TSAP_ADDR=172.20.0.10; CALL_AGENT_ID=CA146; MGW_PROFILE_ID=komodo;
STATUS=INS; CALL_AGENT_CONTROL_PORT=2728; RGW=Y; TGW=N; NAS=N; IAD=N; PBX=N; ANS=N; IVR=N;
MGW_MONITORING_ENABLED=Y; OPER_STATUS=NF;

add termination port-start=1; port-end=2; prefix=a00; type=line; mgw-id =36750;

add subscriber ID=36750; CATEGORY=INDIVIDUAL; STATUS=ACTIVE; BILLING_DN=02882936750;
DN1=02882936750; PRIVACY=NONE; TERM_ID=a001; MGW_ID=36750; PIC1=NONE; PIC2=NONE;
PIC3=NONE; GRP=N; USAGE_SENS=Y; SUB_PROFILE_ID=CD-nat; TERM_TYPE=TERM;
IMMEDIATE_RELEASE=N; TERMINATING_IMMEDIATE_REL=N;

```

```

add subscriber ID=36756; CATEGORY=INDIVIDUAL; STATUS=ACTIVE; BILLING_DN=02882936756;
DN1=02882936756; PRIVACY=NONE; TERM_ID=a002; MGW_ID=36750; PIC1=NONE; PIC2=NONE;
PIC3=NONE; GRP=N; USAGE_SENS=Y; SUB_PROFILE_ID=CD-local; TERM_TYPE=TERM;
IMMEDIATE_RELEASE=N; TERMINATING_IMMEDIATE_REL=N;

add mgw ID=36767; TSAP_ADDR=172.20.0.35; CALL_AGENT_ID=CA146; MGW_PROFILE_ID=komodo;
STATUS=INS; CALL_AGENT_CONTROL_PORT=2728; RGW=Y; TGW=N; NAS=N; IAD=N; PBX=N; ANS=N; IVR=N;
MGW_MONITORING_ENABLED=Y; OPER_STATUS=NF;

add termination port-start=1; port-end=2; prefix=a00; type=line; mgw-id =36767;

add subscriber ID=36767; CATEGORY=INDIVIDUAL; STATUS=ACTIVE; BILLING_DN=02882936767;
DN1=02882936767; PRIVACY=NONE; TERM_ID=a001; MGW_ID=36767; PIC1=NONE; PIC2=NONE;
PIC3=NONE; GRP=N; USAGE_SENS=Y; SUB_PROFILE_ID=CD-local; TERM_TYPE=TERM;
IMMEDIATE_RELEASE=N; TERMINATING_IMMEDIATE_REL=N;

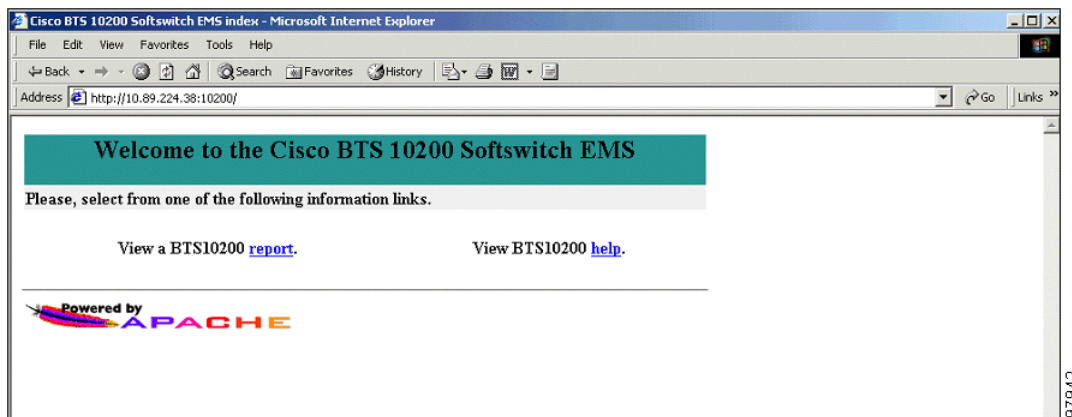
add subscriber ID=36768; CATEGORY=INDIVIDUAL; STATUS=ACTIVE; BILLING_DN=02882936768;
DN1=02882936768; PRIVACY=NONE; TERM_ID=a002; MGW_ID=36767; PIC1=NONE; PIC2=NONE;
PIC3=NONE; GRP=N; USAGE_SENS=Y; SUB_PROFILE_ID=CD-local; TERM_TYPE=TERM;
IMMEDIATE_RELEASE=N; TERMINATING_IMMEDIATE_REL=N;

```

Report Files

Report files are available through XHTML web pages. The URL to the main report menu is the Primary EMS DNS or IP address, for example, <https://ems<MachineName or IP address>>.

Figure 1-3 Main Report/Help Menu



From the main window:

- Click **report** to display all reports generated.
- Click **help** for help on the BTS. The help files provide information on commands, tokens, and parameters.

The BTS allows you to enable or disable the collection of measurement data and specify the reporting interval on a per report basis. The factory default setting is to enable the collection of all measurement types and to set the reporting intervals to 15 minutes. The following example shows how to collect call processing measurement data:

```
change measurement-prov type=callp; enable=yes; time-interval=15;
```

