



CHAPTER 29

Look and Feel

Revised: April 4, 2012
OL-15762-04

- [Concepts, page 29-1](#)
- [Procedures, page 29-2](#)



Audience

We prepared this material with specific expectations of you.

- ✔ You will define and apply a “skin” to your IPTV menus.
-

Concepts

- [Overview, page 29-1](#)
- [Restrictions, page 29-1](#)

Overview

You can customize the interactive menu system that is presented to viewers at your deployment sites and choose which features this menu should include.

Restrictions

- [User Permissions Restrictions, page 29-1](#)

User Permissions Restrictions



Note

Features of Cisco Cast are hidden from you until your user role assignment is APPLICATION MANAGER and you have explicit WRITE permissions (CSCtr05337).

Procedures

- [Choose the Color Scheme for Your Menu System, page 29-2](#)
- [Specify Which Features Your Menu System Should Include, page 29-2](#)
- [Show a Custom Logo in Your Menu System, page 29-3](#)
- [Show the Cisco Logo in Your Menu System, page 29-4](#)
- [Choose the Date and Time Formats for Your Menu System, page 29-4](#)
- [Deploy Menu System Customizations to Your DMPs, page 29-5](#)

Choose the Color Scheme for Your Menu System

Procedure

- Step 1** Click the **Skin Customization** tab.
- Step 2** In the Choose a Skin area, click the radio button for the color scheme that you want.
- Step 3** Click **Save** to save your work.

OR

Click **Cancel** to discard your work.



Tip **Menu customizations do not take effect until you deploy them to DMPs.**

- Step 4** Stop. You have completed this procedure.
-

Related Topics

- [Deploy Menu System Customizations to Your DMPs, page 29-5](#)

Specify Which Features Your Menu System Should Include

Procedure

- Step 1** Click the **Skin Customization** tab.
- Step 2** In the Features to Include in the Cisco Cast Main Menu area, check the check box for each feature that the menu system should include:
- Electronic Programming Guide
 - Video on Demand
 - Live TV Channels

Step 3 Click **Save** to save your work.

OR

Click **Cancel** to discard it



Tip **Menu customizations do not take effect until you deploy them to DMPs.**

Step 4 Stop. You have completed this procedure.

Related Topics

- [Deploy Menu System Customizations to Your DMPs, page 29-5](#)

Show a Custom Logo in Your Menu System

Procedure

Step 1 Click the **Skin Customization** tab.

Step 2 In the Upload a Custom Logo area, click **Browse**.

Step 3 Choose the file to be uploaded, and then click **Open**.

Step 4 Click **Preview** to view the logo file.

Step 5 Check the **Display Custom Logo** check box.
The logo appears in the upper right of the menu system.

Step 6 Click **Save** to save your work.

OR

Click **Cancel** to discard it



Tip **Menu customizations do not take effect until you deploy them to DMPs.**

Step 7 Stop. You have completed this procedure.

Related Topics

- [Deploy Menu System Customizations to Your DMPs, page 29-5](#)

Show the Cisco Logo in Your Menu System

Procedure

- Step 1** Click the **Skin Customization** tab.
- Step 2** Check the **Display Cisco Logo** check box.
The logo appears in the lower left of the menu system.
- Step 3** Click **Save** to save your work.

OR

Click **Cancel** to discard your work.



Tip **Menu customizations do not take effect until you deploy them to DMPs.**

- Step 4** Stop. You have completed this procedure.
-

Related Topics

- [Deploy Menu System Customizations to Your DMPs, page 29-5](#)

Choose the Date and Time Formats for Your Menu System

Procedure

- Step 1** Click the **Skin Customization** tab.
- Step 2** Choose either **mm/dd/yyyy** or **yyyy/mm/dd** from the Date Format list.
- mm is the month
 - dd is the date in the month
 - yyyy is the year
- Step 3** Check the **Use Military Time** check box when your menu system should use a 24-hour clock that counts from 00:00 to 23:59 the hours that pass from one midnight to the next.

OR

Uncheck this check box when your menu system should use a 12-hour clock that counts from 12:00 to 11:59 the hours that pass from midnight to noon (designated as *a.m.*), and again from noon to midnight (designated as *p.m.*).

Step 4 Click **Save** to save your work.

OR

Click **Cancel** to discard it



Tip Menu customizations do not take effect until you deploy them to DMPs.

Step 5 Stop. You have completed this procedure.

Related Topics

- [Deploy Menu System Customizations to Your DMPs, page 29-5](#)

Deploy Menu System Customizations to Your DMPs

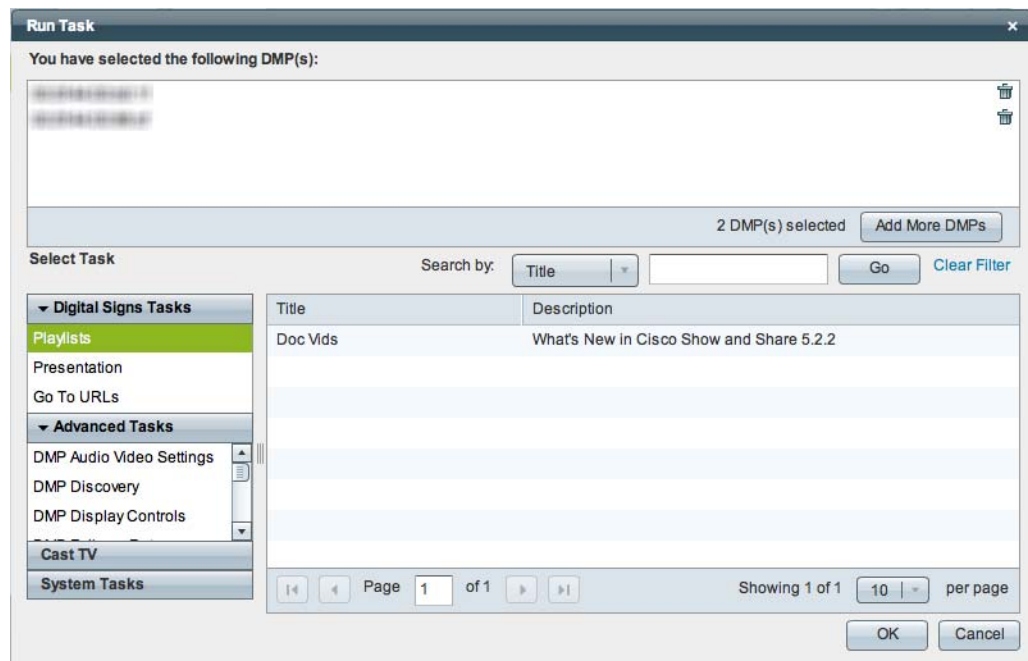
Procedure

Step 1 Choose **Digital Media Players > DMP Manager**.

Step 2 Use check boxes in the table to mark DMPs that should use this menu skin.

Step 3 Click **Run Task**.

The Run Task dialog box opens.

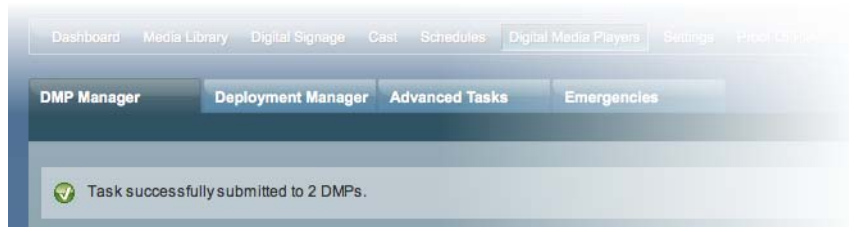


- Use options in the top pane to add DMPs to, or remove them from, your menu skin deployment.
- Use the Search function above the table to locate your **Cast-PG** task in particular.

Step 4 Click to highlight your **Cast-PG** task.

Step 5 Click **OK**.

The Run Task dialog box closes and a message tells you that your selected task was deployed.



- DMM transfers assets to your DMPs.
- DMM creates as many Go-to URL entries as the number of presentations and playlists that are part of the deployment.

Step 6 Stop. You have completed this procedure.