



## APPENDIX **G**

# Changing the Boot Sequence to Start from the CD/DVD Drive

---

This appendix explains how to change the BIOS setting on the Cisco CDE110 server so that the server boots first from the CD/DVD Combo drive.

For VQE Server (VQE-S) and VQE Tools hosts, the CD for an ISO installation of VQE software works correctly only when the BIOS of the Cisco CDE110 server is configured so that the server boots first from the CD/DVD Combo drive.



### Note

A Cisco CDE110 server with Cisco VQE Release 3.0 or later software preinstalled is configured at the factory so that the server boots first from the CD/DVD Combo drive. Therefore, unless someone has changed the BIOS setting for boot sequence or the CDE110 server was delivered with software earlier than Cisco VQE Release 3.0, changing the boot sequence should not be needed.

---

For information on installing VQE software, see the release notes for your version of the VQE software.

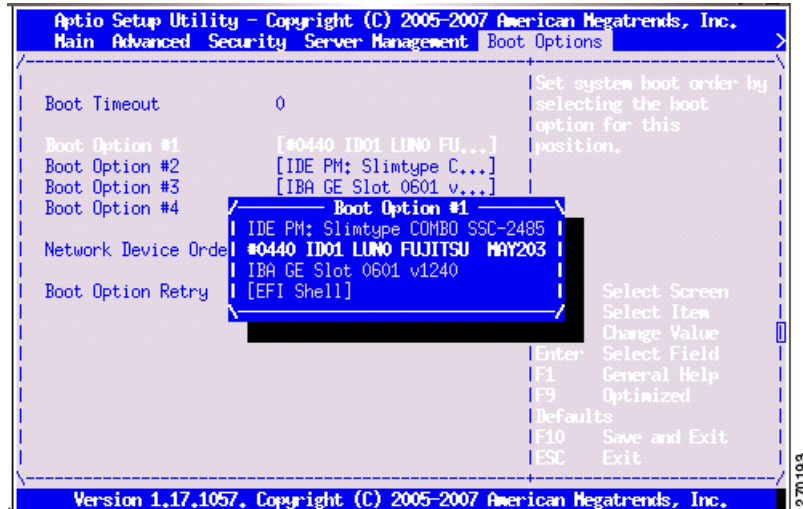
If your CDE110 server is set up so that it boots from something other than the CD/DVD Combo drive, to change the BIOS setting so that the server boots first from the CD/DVD Combo drive, do the following:

---

- Step 1** Power on or power cycle the CDE110.
- Step 2** When the system boots and displays “Press <F2> to enter SETUP,” press F2 to go enter BIOS Setup.

- Step 3** When the BIOS Setup utility is displayed, use the arrow keys to move to the **Boot Options** menu (Figure G-1).

**Figure G-1** Boot Options Menu



- Step 4** So that the CD/DVD Combo drive is first in the boot order, you need to change the boot sequence to the following:
1. IDE PM: SlimType COMBO SSC-2485
  2. #0440 ID01 LUN0 FUJITSU MAY203
  3. IBA GE Slot 0600
  4. [EFI SHELL]



**Note**

Because the components used in the CDE110 can vary, the name of the CD/DVD Combo drive may be different from what is shown in the preceding list.

To change the boot sequence, use the arrow keys to move to the boot option you change (for example, Boot Option #1) and press Enter. Then use the arrow keys to move to the required boot device and press Enter.

The updated Boot Option is displayed.

- Step 5** To save and exit the BIOS Setup, press F10. (As an alternative to pressing F10, use the arrow keys to move to **Exit** in the BIOS Setup menu and select **Save Changes and Exit**.)

The Setup Confirmation message “Save Configuration Changes and exit now?” is displayed.

- Step 6** Select Yes and press Enter.

The CDE110 restarts.