



Maintaining the Content Server

This chapter includes the following Content Server maintenance procedures:

- [Backing Up the Content Server, page 9-1](#)
- [Restoring Files, page 9-3](#)
- [Performing a Software Reimage, page 9-4](#)
- [Restoring Files After a Software Reimage, page 9-8](#)
- [Shutting Down and Powering Off the Content Server, page 9-11](#)
- [Securing the Content Server, page 9-12](#)

Backing Up the Content Server

To ensure that you do not lose data, you should back up the Content Server on a regular basis. You should also back up the Content Server before you install a security update, or perform a software reimage. See these sections:

- [Before Backing Up, page 9-1](#)
- [Performing a Manual Backup, page 9-2](#)
- [Configuring a Scheduled Backup, page 9-2](#)

Before Backing Up

You can back up Content Server files to an external USB drive, to a network drive, or to a network share. The backup procedure captures all Content Server data and media files and portal configuration (call configurations, site settings, media servers, templates, recording aliases, etc).

The Content Server backup procedure does not backup the Windows Server 2008, Internet Authentication Service (IAS)/Network Policy Server (NPS), or Windows Media Services (WMS) configurations. If you are experiencing difficulties with the Content Server operating system, you should perform a software reimage to restore the operating system and reconfigure the Windows services. See

the “Performing a Software Reimage” section on page 9-4.

The Content Server backup procedure does not back up media files that are located on a Network Attached Storage (NAS) device or on an external media server. You should back up the media on the external devices at the same time as the Content Server. If you restore from backup, you must restore the media backup taken at the same time as the Content Server backup. Otherwise, you might not be able to play some recordings.

If you are using an external USB drive for a manual or schedule backup, connect the drive to a USB port on the Content Server rear panel. Log in to the Content Server by using Windows Remote Desktop Connection and confirm that the USB hard drive appears under My Computer. Also, make sure that there is sufficient capacity on the USB drive or network drive for the backed-up files.

Performing a Manual Backup

To perform a manual on-demand backup, follow these steps:

-
- Step 1** Log in to the Content Server by using Windows Remote Desktop Connection. Go to **Start > Administrative Tools > Windows Server Backup**. The Windows Server Backup window appears.
 - Step 2** In the Actions menu, click **Backup Once**. The Backup Once Wizard window appears. To create a backup now, click the **Different options** radio button. Click **Next**.
 - Step 3** In the Select Backup Configuration window, click the **Full server** radio button. Click **Next**.
 - Step 4** In the Specify Destination Type window, choose the type of storage (local drive or remote shared folder) for the backup. Click **Next**.
 - Step 5** Specify the USB drive or network location for the backed-up files. Type a name for the backup. Click **Next**.
 - Step 6** In the Confirmation window, click **Backup**. The Backup Progress window displays the backup progress and status details. The backup process takes approximately 10 minutes per 5 GB of data.
 - Step 7** When the backup is complete, click **Close**.
-

Configuring a Scheduled Backup

To configure a scheduled backup, follow these steps:

-
- Step 1** Log in to the Content Server by using Windows Remote Desktop Connection. Go to **Start > Administrative Tools > Windows Server Backup**. The Windows Server Backup window appears.
 - Step 2** In the Actions menu, click **Backup Schedule**. The Backup Schedule Wizard, Getting Started pop up window appears. Click **Next**.
 - Step 3** In the Select Backup Configuration window, click the **Full server** radio button. Click **Next**.
 - Step 4** In the Specify Backup Time window, enter how often and when to run the backup. Click **Next**.
 - Step 5** In the Specify Destination Type window, choose the storage location (local drive or remote shared folder) for the backup. Click **Next**.

If you select a shared folder location, each backup will erase the previous backup and only the latest backup will be available.

- Step 6** Specify the USB drive or network location for the backed-up files. Type a name for the backup. For a remote shared folder location, enter the username and password for scheduling the backup on the network share. Click **Next**.
- Step 7** In the Confirmation window, review your settings for the scheduled backup. Click **Finish**.
The backup process is now scheduled to run according to the schedule that you entered.
-

Restoring Files

You can restore all Content Server files and portal configuration, or specific folders and files. See these sections:

- [Before Restoring, page 9-3](#)
- [Restoring from a Backup, page 9-3](#)

If you want to restore files after performing a software reimage see this section:

- [Restoring Files After a Software Reimage, page 9-8](#)

Before Restoring

Make sure that you are using a backup that was taken from the same Content Server that you are restoring. If you want to restore to a different Content Server, contact your Cisco reseller.

If your media files are located on a NAS or on an external media server, the Content Server restore procedure does not restore those files. You must have a media backup that was taken at the same time as the Content Server backup and you must also restore this media backup. Otherwise, you might not be able to play some recordings.

The Content Server backup procedure captures all Content Server data and media files and portal configuration (call configurations, site settings, media servers, templates, recording aliases, etc). You can restore all Content Server files and portal configuration, or specific folders and files. The [Restoring from a Backup](#) procedure describes how to recover all Content Server files and portal configuration.

The Content Server restore procedure does not restore the original Windows Server 2008, IAS/NPS, or WMS default settings. If you are experiencing difficulties with the Content Server operating system, you should perform a software reimage to restore the operating system and reconfigure the Windows services. See the [“Performing a Software Reimage” section on page 9-4](#). To restore data and media files following a software reimage, see [“Restoring Files After a Software Reimage”](#).

If you are using an external USB drive to restore backed-up files, connect the drive to a USB port on the Content Server rear panel. Log in to the Content Server by using Windows Remote Desktop Connection and confirm that the USB hard drive appears under My Computer.

Restoring from a Backup

To restore the Content Server from a backup, follow these steps:

- Step 1** Log in to the Content Server by using Windows Remote Desktop Connection. Go to **Start > Administrative Tools > Windows Services**. The Windows Services window appears.

- Step 2** In the Services window, **Stop** these services:
- SQL Server (Content Server)
 - Content Server Content Engine
 - Content Server Control Service
 - Content Server Helper Tool
 - Content Server Offline Transcode Engine
- Step 3** Go to **Start > Administrative Tools > Windows Server Backup**. The Windows Server Backup window appears.
- Step 4** In the Actions menu, click **Recover**. The Recovery Wizard window appears. To select a stored backup, click the **A backup stored on another location** radio button. Click **Next**.
- Step 5** In the Specify Location type window, select the location of the backup file that you want to use for recovery. Click **Next**.
- Step 6** Enter the path of the storage location (local drive or remote shared folder) for the backup file that you want to use to recovery. Click **Next**.
- Step 7** In the Select Backup Date window, choose the backup file date. Click **Next**.
- Step 8** In the Select Recovery Type window, click the **File and Folders** radio button. Click **Next**.
- Step 9** In the Select Items to Recover, select a drive (C: or E:) to recover. To restore all Content Server files, you will need to recover each drive one at a time. Click **Next**.
- Step 10** In the Specific Recovery Options window, enter the recovery destination drive (that you specified in [Step 9](#)) to overwrite. Click the **Overwrite the existing versions with the recovered versions** radio button. Click **Next**.
- Step 11** In the Confirmation window, click **Recover**. The Recovery Progress window displays the recovery progress and status details.
- Step 12** Repeat [Step 4](#) to [Step 11](#) to restore the second Content Server drive. When the recovery of both drives is complete, click **Close**.
- Step 13** Restart the services that you stopped in [Step 2](#).

Performing a Software Reimage

To return a Content Server to the factory-default software, you can perform a software reimage. This procedure clears the server hard drive and then reinstalls the Content Server system software.

You should backup the Content Server before performing a software reimage. See the [“Backing Up the Content Server”](#) section on page 9-1.



Caution

Content Server Release 6.0 software cannot be installed on first- or second-generation Content Server hardware. If you attempt to run the USB media kit 6.0 installer on older hardware it will fail and could cause unrecoverable damage to the Content Server.

The device serial number is on a label located on the top right hand front of the Content Server, and in the web interface (go to **Management > Diagnostics > Server overview**). These are the device serial number formats:

- Third-generation serial number: **49A3xxxx**
- Second-generation serial number: **49A2xxxx**
- First-generation serial number: **49A0xxxx**

You must have administrator privileges to perform a software reimage.

These are the software reimage tasks:

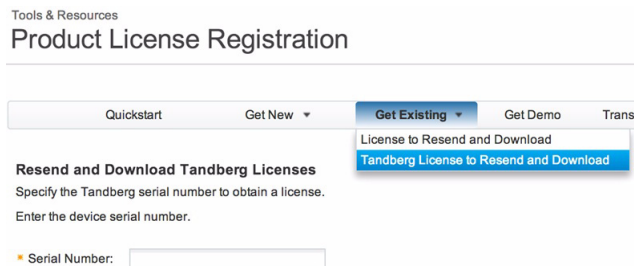
- [Task 1: Clear the hard drive and install the software, page 9-5](#)
- [Task 2: Install the license files, page 9-6](#)
- [Task 3: Configure the basic settings, page 9-8](#)

After you complete the software reimage, see the “[Restoring Files After a Software Reimage](#)” section to restore the data and media files on the Content Server.

Reimage Instructions

You need these items to complete the Content Server software reimage:

- Content Server Release 6.x USB media kit
- USB keyboard, mouse, and VGA monitor
- IP address, subnet mask, and gateway for the Content Server
- Content Server license files
 - Go to cisco.com/go/license and log in. Choose **Get Existing > Tandberg License to Resend and Download**
 - Enter the Content Server serial number in the 49A3xxxx format in the Serial Number field



If you need assistance obtaining the Content Server license files, you can open a case with Cisco TAC: <http://www.cisco.com/cisco/web/support/index.html>

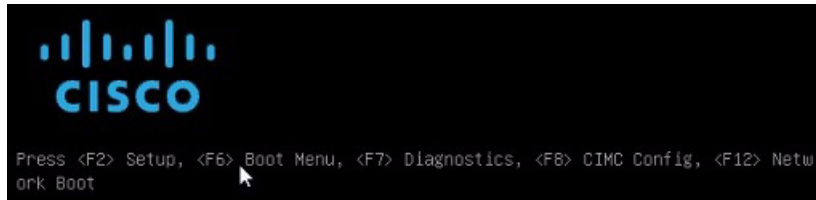
Task 1: Clear the hard drive and install the software

Follow these steps:

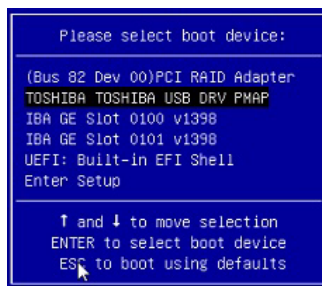
-
- Step 1** Disconnect any external hard drives or USB drives from the Content Server.
 - Step 2** Install the USB drive in a USB port on the Content Server rear panel.
 - Step 3** Use the supplied KVM cable to connect a USB keyboard, mouse, and a VGA monitor to the KVM connector on the Content Server front panel.

Alternatively, you can use the VGA and USB ports on the rear panel. However, you cannot use the front panel VGA and the rear panel VGA at the same time. If you do so, the first VGA connector is disabled.

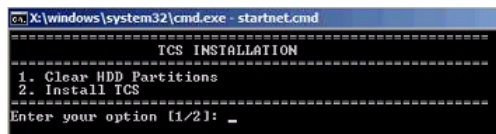
- Step 4** Log in to the Content Server Windows Server Manager. Verify that the USB drive is installed by going to **Start > Computer > Removable Disk (USB drive:)**.
- Step 5** Restart the Content Server. Go to **Start > Log off > Restart > Application Installation (Planned)**.
- Step 6** In the BIOS utility, press **F6** to select the Boot Menu.



- Step 7** When the boot device menu appears, choose **Toshiba USB DRV PMAP** and press **Enter**.



- Step 8** Wait while Windows restarts and boots from the USB drive. The system will cycle through several screens. This could take a few minutes.
- Step 9** When the Content Server Installation menu appears, choose number **1** (Clear HDD Partitions) and press **Enter**.



- Step 10** After clearing the hard drive the Content Server restarts and reboots from the USB drive. When the Content Server Installation menu appears, choose number **2** (Install Content Server) and press **Enter**.
- Step 11** When the installation process is complete, the Content Server restarts. Continue with [Task 2: Install the license files](#).

Task 2: Install the license files

Follow these steps:

- Step 1** Log in to the Content Server Windows Server Manager by using the default password, **Cisco123**.

- Step 2** Go to **Start > Computer > Removable Disk (USB drive) > Tools**. Copy the generic **Licensedata** text file to the Content Server (any folder). The generic license file has these entries that you need to overwrite with your specific license key information:

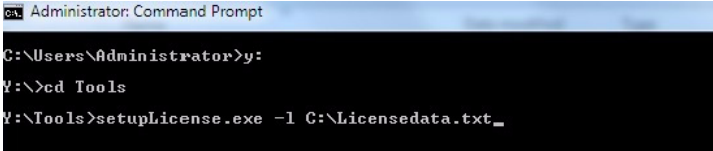
```
<<Content Server Software Serial No>>
<<Checksum>>
<<Release Key>>
<<R5 Key>>
<<L2 Key>>
```

- Step 3** Obtain your Content Server Checksum and License Release Keys from Cisco.com.
- Step 4** Open the text file that has your specific license key information. Select each data line one at a time, copy, and then overwrite each data line in the generic license file. There should be no extra spaces or lines after you transfer the data to the generic license file.

This example license file shows the Content Server software serial number, the checksum, and three release keys:

```
49A30099
2c:20:23:7a:5f:4a:e1:80:f8:ae:5f:8a:77:a5:25:a7:70:46:4d:19:0d <checksum output truncated>
7892490445634702
114371R5-1-DAB1697D
116381L2-1-6E0429AA
```

- Step 5** Save and close the generic **Licensedata** text file on the Content Server.
- Step 6** Go to **Start > Command Prompt** to run the License Install application. Change the directory to **USB drive > Tools**: and run the **setupLicense.exe -l *Licensedata.txt file-path***.



```
Administrator: Command Prompt
C:\Users\Administrator>y:
Y:\>cd Tools
Y:\Tools>setupLicense.exe -l C:\Licensedata.txt_
```

- Step 7** When the setup application is finished, it will display “Successfully read license data from licenseData.txt” and other specific license information.
- Step 8** In the Command Prompt window, enter **restore.bat**.



```
Administrator: Command Prompt
S:\Tools>restore.bat
```

- Step 9** Close the Command Prompt window and restart the Content Server. Go to **Start > Log off > Restart > Application Installation (Planned)**.
- Step 10** Remove the USB drive from the Content Server rear panel. Continue with [Task 3: Configure the basic settings](#).

Note To install additional license keys such as the cluster, premium resolution, or port options, complete the Content Server basic configuration. Navigate to the user interface. Go to **Management > Configuration**. In the Software option area add the license option keys. Click **Restart service** to activate the license keys.

Task 3: Configure the basic settings

After the software reimage, you should reset the administrator password, assign an IP address, set the date and time, and enable Windows Remote Desktop Connection. For more information about the Content Server initial configuration, see the [Cisco TelePresence Content Server Release Quick Start Guide](#) on Cisco.com. Follow these steps:

-
- Step 1** Go to **Start > Control Panel > User Accounts > Change your Windows password > Change your password**.
 - Step 2** In the Change your password window, enter the current password (**Cisco123**), the new password, and confirm the new password. Click **Change password**. Click **OK**.
 - Step 3** Go to **Start > Control Panel > Network and Internet**. From the Network and Sharing Center, click **View network status and tasks**.
 - Step 4** In the Connect or disconnect section, click **Local Connection**. Choose **IPv4** from the list. In the IPv4 Properties window, click the **Use the following IP address** radio button. Enter the Content Server *IPv4 address*, *subnet-mask*, and *default-gateway*. Click **OK**.
 - Step 5** In the Server Manager window, click the time and date box in the lower right corner to open the settings window. Or, go to **Start > Control Panel > Clock, Language, and Region > Set the time and date**.
 - Step 6** Click **Change date and time settings**. Update the date, time, and time zone. Click **OK**.
 - Step 7** Go to **Start > Control Panel > System Security > System > Remote Settings**.
 - Step 8** From the System Properties window Remote tab, select and click a radio button to enable Remote Desktop on the Content Server. Click **OK**.
 - Step 9** Restart the server. Go to **Start > Log Off > Restart**. (Optional) Continue with [Restoring Files After a Software Reimage](#).
-

You can now disconnect the KVM cable from the Content Server and continue configuring the server by accessing the Content Server user interface and by using Windows Remote Desktop Connection.

Restoring Files After a Software Reimage

After you complete the Content Server software reimage, you should restore the files that you backed up before the reimage. This will restore all Content Server data and media files and portal configuration (call configurations, site settings, media servers, templates, recording aliases, etc). See these sections:

- [Restore Files on a Reimaged Standalone Content Server, page 9-8](#)
- [Restore Files on a Reimaged Content Server with Network Attached Storage, page 9-9](#)
- [Restore Files on a Reimaged Content Server in a Cluster, page 9-10](#)

Restore Files on a Reimaged Standalone Content Server

Follow these step to restore files on the Content Server after completing the [“Performing a Software Reimage”](#) procedure:

-
- Step 1** Log in to the Content Server by using Windows Remote Desktop Connection. Go to **Start > Administrative Tools > Windows Services**. The Windows Services window appears.
 - Step 2** In the Services window, stop these services:
 - a. SQL Server (Content Server)
 - b. Content Server Content Engine
 - c. Content Server Control Service
 - d. Content Server Helper Tool
 - e. Content Server Offline Transcode Engine
 - Step 3** Go to **Start > Administrative Tools > Windows Server Backup**. The Windows Server Backup window appears.
 - Step 4** In the Actions menu, click **Recover**. The Recovery Wizard window appears. To choose a stored backup, click the **A backup stored on another location** radio button. Click **Next**.
 - Step 5** In the Specify Location type window, choose the location of the backup file that you want to use for recovery. Click **Next**.
 - Step 6** Enter the path of the storage location (local drive or remote shared folder) for the backup file that you want to use for recovery. Click **Next**.
 - Step 7** In the Select Backup Date window, choose the backup file date. Click **Next**.
 - Step 8** In the Select Recovery Type window, click the **File and Folders** radio button. Click **Next**.
 - Step 9** In the Select Items to Recover, choose only drive **E:** to recover. Click **Next**.
 - Step 10** In the Specific Recovery Options window, enter the recovery destination drive E: to overwrite. Click the **Overwrite the existing versions with the recovered versions** radio button. Click **Next**.
 - Step 11** In the Confirmation window, click **Recover**. The Recovery Progress window displays the recovery progress and status details. When the recovery process is finished, click **Close**.
 - Step 12** Restart the services that you stopped in [Step 2](#). Restart the Content Server.
-

Restore Files on a Reimagined Content Server with Network Attached Storage

Follow these step to restore files on the Content Server with NAS after completing the [“Performing a Software Reimage”](#) procedure:

-
- Step 1** Add the Content Server to the same domain as the NAS. For more information, see [Chapter 13, “Setting Up External Media Storage.”](#)
 - Step 2** Log in to the Content Server by using Windows Remote Desktop Connection.
 - Step 3** Run the Content Server Wizard and click **Alternate Storage [NAS] Wizard**. Follow the on-screen instructions to configure the NAS.
 - Step 4** Go to **Start > Administrative Tools > Windows Services**. The Windows Services window appears.
 - Step 5** In the Services window, stop these services:
 - a. SQL Server (Content Server)

- b. Content Server Content Engine
 - c. Content Server Control Service
 - d. Content Server Helper Tool
 - e. Content Server Offline Transcode Engine
- Step 6** Go to **Start > Administrative Tools > Windows Server Backup**. The Windows Server Backup window appears.
- Step 7** In the Actions menu, click **Recover**. The Recovery Wizard window appears. To select a stored backup, click the **A backup stored on another location** radio button. Click **Next**.
- Step 8** In the Specify Location Type window, choose the location of the backup file that you want to use for recovery. Click **Next**.
- Step 9** Enter the path of the storage location (local drive or remote shared folder) for the backup file that you want to use for recovery. Click **Next**.
- Step 10** In the Select Backup Date window, choose the backup file date. Click **Next**.
- Step 11** In the Select Recovery Type window, click the **File and Folders** radio button. Click **Next**.
- Step 12** In the Select Items to Recover window, select only drive **E:** to recover. Click **Next**.
- Step 13** In the Specific Recovery Options window, enter the recovery destination drive E: to overwrite. Click the **Overwrite the existing versions with the recovered versions** radio button. Click **Next**.
- Step 14** In the Confirmation window, click **Recover**. The Recovery Progress window displays the recovery progress and status details. When the recovery process is finished, click **Close**.
- Step 15** Restart the services that you stopped in [Step 5](#). Restart the Content Server.
-

Restore Files on a Reimaged Content Server in a Cluster

Follow these step to restore files on a Content Server in a cluster after completing the [“Performing a Software Reimage”](#) procedure:

-
- Step 1** Add the Content Server to the same domain as the NAS. For more information, see [Chapter 13, “Setting Up External Media Storage.”](#)
- Step 2** Log in to the Content Server by using Windows Remote Desktop Connection.
- Step 3** Run Content Server Wizard and click the **Cluster Management Wizard**. Follow the on-screen instructions to configure the cluster. For more information, see [Chapter 6, “Creating and Managing a Content Server Cluster.”](#)
- Step 4** Configure the cluster by using the ClusterSettings.xml file. Make sure that the NAS path/external database is the same and is available.
- Step 5** Go to **Start > Administrative Tools > Windows Services**. The Windows Services window appears.
- Step 6** In the Services window, stop these services:
- a. SQL Server (Content Server)
 - b. Content Server Content Engine
 - c. Content Server Control Service
 - d. Content Server Helper Tool

- e. Content Server Offline Transcode Engine
- Step 7** Go to **Start > Administrative Tools > Windows Server Backup**. The Windows Server Backup window appears.
- Step 8** In the Actions menu, click **Recover**. The Recovery Wizard window appears. To select a stored backup, click the **A backup stored on another location** radio button. Click **Next**.
- Step 9** In the Specify Location Type window, choose the location of the backup file that you want to use for recovery. Click **Next**.
- Step 10** Enter the path of the storage location (local drive or remote shared folder) for the backup file that you want to use for recovery. Click **Next**.
- Step 11** In the Select Backup Date window, choose the backup file date. Click **Next**.
- Step 12** In the Select Recovery Type window, click the **File and Folders** radio button. Click **Next**.
- Step 13** In the Select Items to Recover window, select only drive **E:** to recover. Click **Next**.
- Step 14** In the Specific Recovery Options window, enter the recovery destination drive E: to overwrite. Click the **Overwrite the existing versions with the recovered versions** radio button. Click **Next**.
- Step 15** In the Confirmation window, click **Recover**. The Recovery Progress window displays the recovery progress and status details. When the recovery process is finished, click **Close**.
- Step 16** Restart the services that you stopped in [Step 6](#). Restart the Content Server.

Shutting Down and Powering Off the Content Server

The server can run in two power modes:

- Main power mode—Power is supplied to all server components and any operating system on your drives can run.
- Standby power mode—Power is supplied only to the service processor and the cooling fans and it is safe to power off the server from this mode.

You can invoke a graceful shutdown or an hard shutdown by using either of the following methods:

- Use the Cisco Integrated Management Controller (CIMC) management interface. For more information, see the [Cisco TelePresence Content Server Release Quick Start Guide](#) and the [Cisco UCS C220 Server Installation and Service Guide](#) on Cisco.com.
- Use the Power button on the server front panel.

To use the Power button, do the following:

- Step 1** Stop any recording calls that are in progress on the Content Server.
- Step 2** Check the color of the Power Status LED.
- Green—the server is in main power mode and must be shut down before it can be safely powered off.
 - Amber—the server is already in standby mode and can be safely powered off.
- Step 3** Invoke either a graceful shutdown or a hard shutdown:



Caution

To avoid data loss or damage to your operating system, you should always invoke a graceful shutdown of the operating system.

- Graceful shutdown—Press and release the Power button. The operating system performs a graceful shutdown and the Content Server goes to standby mode, which is indicated by an amber Power Status LED.
- Emergency shutdown—Press and hold the Power button for four seconds to force the main power off and immediately enter standby mode.

Step 4 Disconnect the power cords from the power supplies in the Content Server to completely power off the server.

Securing the Content Server

Antivirus Protection

You can use antivirus protection on the Content Server. If using antivirus software we recommend that you do not scan the **E:** volume or the **C:\program files\Tandberg** directory where the data files are located.

Microsoft Security Patches

You can apply Microsoft security patches to the Content Server. We recommend that you download and install the patches during normal maintenance windows. You can manually install recommended patches from the Microsoft website or use Windows Update.

Content Server security bulletins inform you of patches that we recommend, or not recommend (because of known instability issues with the Content Server application). These bulletins are published if aspects of Microsoft patches are critical to performance or security of the Content Server.

You can access the latest Content Server security bulletins on Cisco.com:

<http://www.cisco.com/c/en/us/support/conferencing/telepresence-content-server/products-field-notices-list.html>

http://www.cisco.com/en/US/products/ps11347/prod_bulletins_list.html

Joining the Content Server to a Domain

The Content Server can be joined to a Microsoft Active Directory Domain in the same way as any Windows Server 2008 server. Domain group policies may be applied to the Content Server.

The Content Server must be joined to a domain to configure external storage or a cluster of Content Servers.

Do not apply any policy that:

- Changes the Administrator account name. If the Administrator account name is changed, the Serial Port/LCD panel password reset tool will not work.
- Restricts the guest group. This will disable the IIS user account. The IIS user account is necessary to provide the web user interface for the Content Server.



Caution

Other group policies might restrict services required for the Content Server to function. We recommended that you test the Content Server after each new group policy is applied before making the Content Server available to users in the production environment.
