

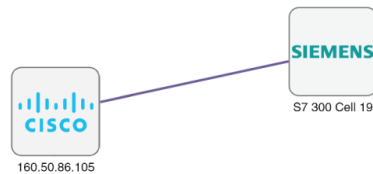


Activity

- [Activity, on page 1](#)

Activity

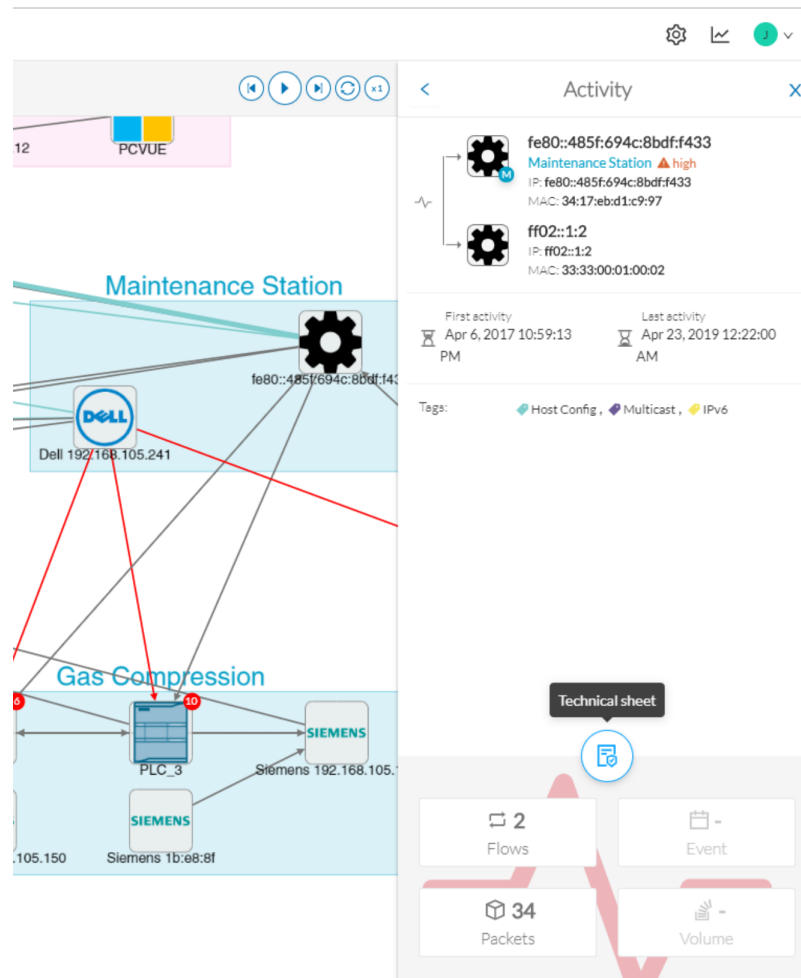
An activity is the representation of the communications exchanged between [devices](#) or [components](#). It is recognizable on the map by a line (or an arrow if the source and destination components are known) which links one component to another:



An activity between two components is actually a simplified view of the [flows](#) exchanged. You can have many types of flows going in both directions inside an activity represented in the map.

When you click on an activity in the map, a right side panel opens, containing:

- The date of the first and last communication between the two components.
- Details about the components (name, IP, MAC and if applicable the group they are part of, their criticality).
- The tags on the flows.
- The number of flows.
- The number of packets.
- The volume of data exchanged.
- The number of events.
- A button to access the [technical sheet](#) that shows more details about tags and flows.



Devices or components with no activity does not mean that it did not have any interaction. In fact, a component can only be detected if at some point it has been involved in a network activity (communication emission/reception). Lack of activity can mean that the other linked component is not part of the preset selected and so doesn't display.

Aggregated activities or conduits:

When devices and components are placed inside groups, activities are by default aggregated to enhance visibility. Aggregated activities are called **conduits**.

Use the Show network activities button at the lower left side of the map to turn on/off the simplified view of the activities between groups. This feature is turned on by default.

