



Customizing Clientless SSL VPN

- [Customize the Clientless SSL VPN User Experience](#) , on page 1
- [Clientless SSL VPN End User Setup](#), on page 6
- [Customize Bookmark Help](#), on page 45

Customize the Clientless SSL VPN User Experience

You can customize the Clientless SSL VPN user experience, including the logon, portal, and logout pages. There are two methods you can use. You can customize pre-defined page components in the Add/Edit Customization Object window. This window adds, or makes changes to, an XML file stored on the ASA (a customization object) that is used to customize the pages. Alternatively, you can export the XML file to a local computer or server, make changes to the XML tags, and re-import the file to the ASA. Either method creates a customization object that you apply to a connection profile or group policy.

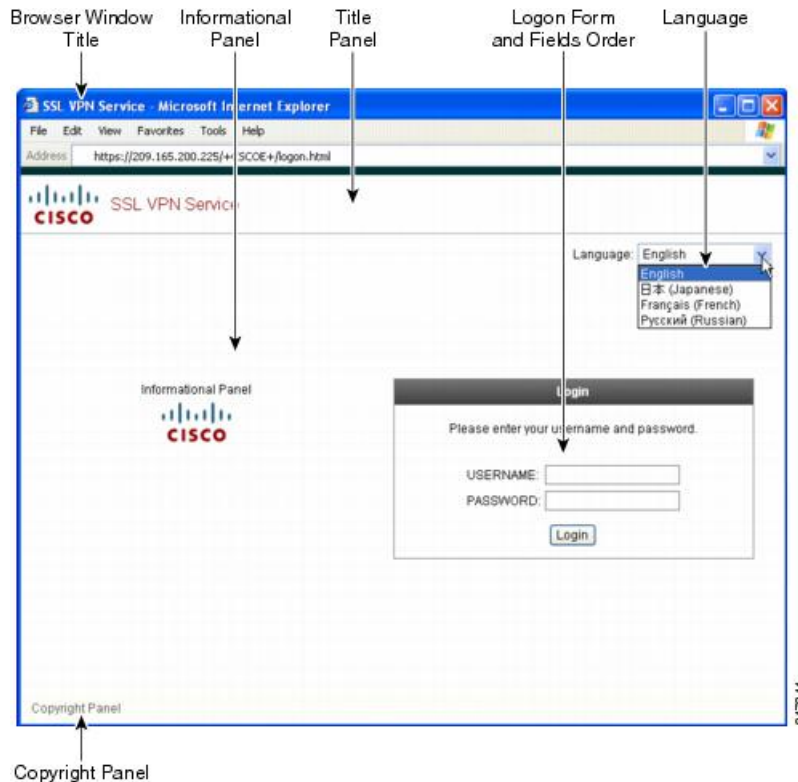
Rather than customizing the pre-defined components of the logon page, you can create your own page and import it to the ASA for full customization.

You can customize pre-defined components of the logon page, including titles, language options, and messages to users. Alternatively, you can completely replace the page with your own custom page (full customization).

Customize the Logon Page with the Customization Editor

The following figure shows the logon page and the pre-defined components you can customize:

Figure 1: Components of Clientless Logon Page



To customize all the components of the logon page, follow this procedure. You can preview your changes for each component by clicking the **Preview** button:

Procedure

- Step 1** Specify pre-defined customization. Go to **Logon Page** and choose **Customize pre-defined logon page components**. Specify a title for the browser window.
- Step 2** Display and customize the title panel. Go to **Logon Page > Title Panel** and check **Display title panel**. Enter text to display as the title and specify a logo. Specify any font styles.
- Step 3** Specify language options to display. Go to **Logon Page > Language** and check **Enable Language Selector**. Add or delete any languages to display to remote users. Languages in the list require translation tables that you configure in **Configuration > Remote Access VPN > Language Localization**.
The username and password fields' labels will change according to the language selected by the user.
- Step 4** Customize the logon form. Go to **Logon Page > Logon Form**. Customize the text of the form and the font style in the panel. The secondary password field appears to users only if a secondary authentication server is configured in the connection profile.
- Step 5** Arrange the position of the logon form fields. Go to **Logon Page > Form Fields Order**. Use the up and down arrow buttons to change the order that the fields are displayed.
- Step 6** Add messages to users. Go to **Logon Page > Informational Panel** and check **Display informational panel**. Add text to display in the panel, change the position of the panel relative to the logon form, and specify a logo to display in this panel.

- Step 7** Display a copyright statement. Go to **Logon Page > Copyright Panel** and check Display copyright panel. Add text to display for copyright purposes.
- Step 8** Click **OK**, then apply the changes to the customization object you edited.

What to do next

Read about Replacing the Logon Page with Your Own Fully Customized Page.

Replace the Logon Page With Your Own Fully Customized Page

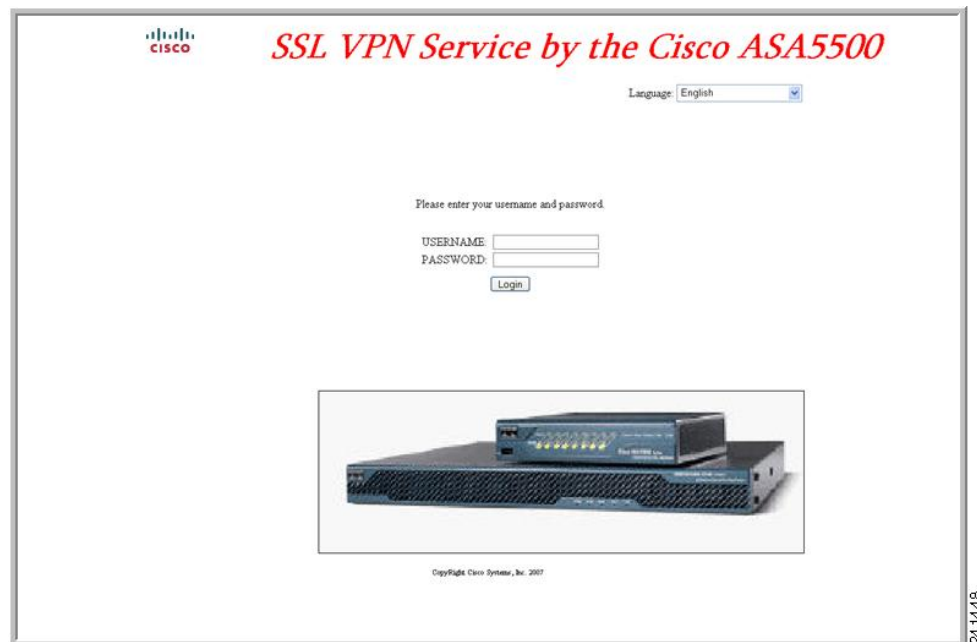
If you prefer to use your own, custom login screen, rather than changing specific components of the logon page we provide, you can perform this advanced customization using the Full Customization feature.

With Full Customization, you provide the HTML for your own login screen, and you insert Cisco HTML code that calls functions on the ASA that create the Login form and the Language Selector drop-down list.

This document describes the modifications you need to make to your HTML code and the tasks required to configure the ASA to use your code.

The following figure shows a simple example of a custom login screen enabled by the Full Customization feature.

Figure 2: Example of Full Customization of Logon Page



Create the Custom Login Screen File

The following HTML code is used as an example and is the code that displays:

```
<head>
<meta http-equiv="Content-Type" content="text/html; charset=windows-1252">
<title>New Page 3</title>
```

```

<base target="_self">
</head>

<p align="center">
<font face="Snap ITC"
  size="6" color="#FF00FF">
</font><font face="Snap ITC" color="#FF00FF" size="7">&nbsp;</font><i><b><font color="#FF0000"
  size="7" face="Sylfaen"> SSL VPN Service by the Cisco ASA5500</font></b></i></p>

<body onload="cscs_ShowLoginForm('lform');cscs_ShowLanguageSelector('selector')">

<table>

<tr><td colspan=3 height=20 align=right><div id="selector" style="width:
300px"></div></td></tr>
<tr><td></td><td></td><td></td></tr>
<tr>
<td height="379"></td>
<td height="379"></td>
<td align=middle valign=middle>
<div id=lform >
<p>&nbsp;</p>
<p>&nbsp;</p>
<p>&nbsp;</p>
<p>Loading...</p>
</div>
</td>
</tr>
<tr>
<td width="251"></td>
<td width="1"></td>
<td align=right valign=right width="800">

</td></tr>
</table>

```

The indented code injects the Login form and the Language Selector on the screen. The function **cscs_ShowLoginForm('lform')** injects the logon form. **cscs_ShowLanguageSelector('selector')** injects the Language Selector.

Procedure

-
- Step 1** Name your file `logon.inc`. When you import the file, the ASA recognizes this filename as the logon screen.
- Step 2** Modify the paths of images used by the file to include `/+CSCOU+/`.
- Files that are displayed to remote users before authentication must reside in a specific area of the ASA cache memory represented by the path `/+CSCOU+/`. Therefore, the source for each image in the file must include this path. For example:
- src="/+CSCOU+/asa5520.gif"**
- Step 3** Insert the special HTML code below. This code contains the Cisco functions, described earlier, that inject the login form and language selector onto the screen.

```

<body onload="cscs_ShowLoginForm('lform');cscs_ShowLanguageSelector('selector')">

<table>

```

```

<tr><td colspan=3 height=20 align=right><div id="selector" style="width:
300px"></div></td></tr>
<tr><td></td><td></td><td></td></tr>
<tr>
<td height="379"></td>
<td height="379"></td>
<td align=middle valign=middle>
<div id=lform >
<p>&nbsp;</p>
<p>&nbsp;</p>
<p>&nbsp;</p>
<p>Loading...</p>
</div>
</td>
</tr>
<tr>
<td width="251"></td>
<td width="1"></td>
<td align=right valign=right width="800">

</td></tr>

</table>

```

Import the File and Images

Procedure

- Step 1** Go to Clientless SSL VPN Access > Portal > Web Contents.
- Step 2** Click **Import**.
- Select the **Source** option, and enter the path the Web content files.
 - In the **Destination** area, choose No for Require Authentication to access its content. This ensures the files are stored in the area of flash memory accessible to users before authentication.
- Step 3** Click **Import Now**.

Configure the Security Appliance to Use the Custom Login Screen

Procedure

- Step 1** Select a customization object in the table from Clientless SSL VPN Access > Portal > Customization and click Edit.
- Step 2** In the navigation pane, choose **Logon Page**.
- Step 3** Choose **Replace pre-defined logon page with a custom page**.
- Step 4** Click **Manage** to import your logon page file.
- Step 5** In the Destination area, choose No to ensure your logon page is visible to users before they authenticate.

- Step 6** Back in the Edit Customization Object window, click **General** and enable the customization object for the connection profile and/or group policies you desire.
-

Clientless SSL VPN End User Setup

This section is for the system administrator who sets up Clientless SSL VPN for end users. It describes how to customize the end-user interface and summarizes configuration requirements and tasks for a remote system. It specifies information to communicate to users to get them started using Clientless SSL VPN.

Define the End User Interface

The Clientless SSL VPN end user interface consists of a series of HTML panels. A user logs on to Clientless SSL VPN by entering the IP address of an ASA interface in the format `https://address`. The first panel that displays is the login screen.

View the Clientless SSL VPN Home Page

After the user logs in, the portal page opens.

The home page displays all of the Clientless SSL VPN features you have configured, and its appearance reflects the logo, text, and colors you have selected. This sample home page includes all available Clientless SSL VPN features with the exception of identifying specific file shares. It lets users browse the network, enter URLs, access specific websites, and use Application Access (port forwarding and smart tunnels) to access TCP applications.

View the Clientless SSL VPN Application Access Panel

To start port forwarding or smart tunnels, a user clicks the **Go** button in the Application Access box. The Application Access window opens and displays the TCP applications configured for this Clientless SSL VPN connection. To use an application with this panel open, the user starts the application in the normal way.

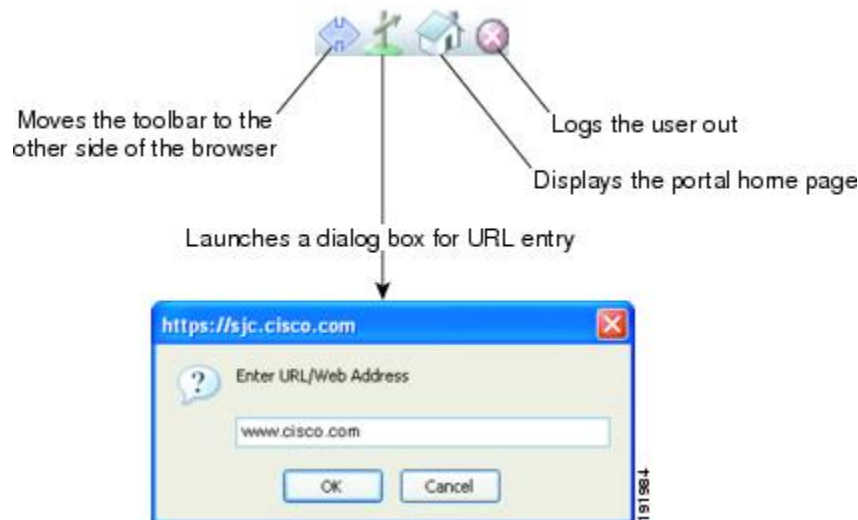


Note A stateful failover does not retain sessions established using Application Access. Users must reconnect following a failover.

View the Floating Toolbar

The floating toolbar shown in the following figure represents the current Clientless SSL VPN session.

Figure 3: Clientless SSL VPN Floating Toolbar



Be aware of the following characteristics of the floating toolbar:

- The toolbar lets you enter URLs, browse file locations, and choose preconfigured Web connections without interfering with the main browser window.
- If you configure your browser to block popups, the floating toolbar cannot display.
- If you close the toolbar, the ASA prompts you to end the Clientless SSL VPN session.

Customize Clientless SSL VPN Pages

You can change the appearance of the portal pages displayed to Clientless SSL VPN users. This includes the Login page displayed to users when they connect to the security appliance, the Home page displayed to users after the security appliance authenticates them, the Application Access window displayed when users launch an application, and the Logout page displayed when users log out of Clientless SSL VPN sessions.

After you customize the portal pages, you can save your customization and apply it to a specific connection profile, group policy, or user. The changes do not take effect until you reload the ASA, or you switch off and then enable clientless SSL.

You can create and save many customization objects, enabling the security appliance to change the appearance of portal pages for individual users or groups of users.

Information About Customization

The ASA uses customization objects to define the appearance of user screens. A customization object is compiled from an XML file which contains XML tags for all the customizable screen items displayed to remote users. The ASA software contains a customization template that you can export to a remote PC. You can edit this template and import the template back into the ASA as a new customization object.

When you export a customization object, an XML file containing XML tags is created at the URL you specify. The XML file created by the customization object named *Template* contains empty XML tags and provides the basis for creating new customization objects. This object cannot be changed or deleted from cache memory but can be exported, edited, and imported back into the ASA as a new customization object.

Customization Objects, Connection Profiles, and Group Policies

Initially, when a user first connects, the default customization object (named *DfltCustomization*) identified in the connection profile (tunnel group) determines how the logon screen appears. If the connection profile list is enabled, and the user selects a different group which has its own customization, the screen changes to reflect the customization object for that new group.

After the remote user is authenticated, the screen appearance is determined by whether a customization object has been assigned to the group policy.

Edit the Customization Template

This section shows the contents of the customization template and has convenient figures to help you quickly choose the correct XML tag and make changes that affect the screens.

You can use a text editor or an XML editor to edit the XML file. The following example shows the XML tags of the customization template. Some redundant tags have been removed for easier viewing:

```
<custom>
  <localization>
    <languages>en, ja, zh, ru, ua</languages>
    <default-language>en</default-language>
  </localization>
  <auth-page>
    <window>
      <title-text l10n="yes"><![CDATA[SSL VPN Service</title-text>
    </window>
    <full-customization>
      <mode>disable</mode>
      <url></url>
    </full-customization>
    <language-selector>
      <mode>disable</mode>
      <title l10n="yes">Language:</title>
      <language>
        <code>en</code>
        <text>English</text>
      </language>
      <language>
        <code>zh</code>
        <text>(Chinese)</text>
      </language>
      <language>
        <code>ja</code>
        <text>(Japanese)</text>
      </language>
      <language>
        <code>ru</code>
        <text>(Russian)</text>
      </language>
      <language>
        <code>ua</code>
        <text>(Ukrainian)</text>
      </language>
    </language-selector>
    <logon-form>
      <title-text l10n="yes"><![CDATA[Login</title-text>
      <title-background-color><![CDATA[#666666</title-background-color>
      <title-font-color><![CDATA[#ffffff</title-font-color>
      <message-text l10n="yes"><![CDATA[Please enter your username and
password.</message-text>
```



```

        <username-prompt-text l10n="yes"><![CDATA[USERNAME:</username-prompt-text>
        <password-prompt-text l10n="yes"><![CDATA[PASSWORD:</password-prompt-text>
        <internal-password-prompt-text l10n="yes">Internal
Password:</internal-password-prompt-text>
        <internal-password-first>no</internal-password-first>
        <group-prompt-text l10n="yes"><![CDATA[GROUP:</group-prompt-text>
        <submit-button-text l10n="yes"><![CDATA[Login</submit-button-text>
        <title-font-color><![CDATA[#ffffff</title-font-color>
        <title-background-color><![CDATA[#666666</title-background-color>
        <font-color>#000000</font-color>
        <background-color>#ffffff</background-color>
        <border-color>#858A91</border-color>
    </logon-form>
    <logout-form>
        <title-text l10n="yes"><![CDATA[Logout</title-text>
        <message-text l10n="yes"><![CDATA[Goodbye.<br>

For your own security, please:<br>

<li>Clear the browser's cache

<li>Delete any downloaded files

<li>Close the browser's window</message-text>
        <login-button-text l10n="yes">Logon</login-button-text>
        <hide-login-button>no</hide-login-button>
        <title-background-color><![CDATA[#666666</title-background-color>
        <title-font-color><![CDATA[#ffffff</title-font-color>
        <title-background-color><![CDATA[#ffffff</title-font-color>
        <title-background-color><![CDATA[#666666</title-background-color>
        <font-color>#000000</font-color>
        <background-color>#ffffff</background-color>
        <border-color>#858A91</border-color>
    </logout-form>
    <title-panel>
        <mode>enable</mode>
        <text l10n="yes"><![CDATA[SSL VPN Service</text>
        <logo-url l10n="yes">/+CSCOU+/cisco_logo.gif</logo-url>
        <gradient>yes</gradient>
        <style></style>
        <background-color><![CDATA[#ffffff</background-color>
        <font-size><![CDATA[larger</font-size>
        <font-color><![CDATA[#800000</font-color>
        <font-weight><![CDATA[bold</font-weight>
    </title-panel>
    <info-panel>
        <mode>disable</mode>
        <image-url l10n="yes">/+CSCOU+/clear.gif</image-url>
        <image-position>above</image-position>
        <text l10n="yes"></text>
    </info-panel>
    <copyright-panel>
        <mode>disable</mode>
        <text l10n="yes"></text>
    </copyright-panel>
</auth-page>
<portal>
    <title-panel>
        <mode>enable</mode>
        <text l10n="yes"><![CDATA[SSL VPN Service</text>
        <logo-url l10n="yes">/+CSCOU+/cisco_logo.gif</logo-url>
        <gradient>yes</gradient>
        <style></style>
        <background-color><![CDATA[#ffffff</background-color>

```

```

        <font-size><![CDATA[larger</font-size>
        <font-color><![CDATA[#800000</font-color>
        <font-weight><![CDATA[bold</font-weight>
</title-panel>
<browse-network-title l10n="yes">Browse Entire Network</browse-network-title>
<access-network-title l10n="yes">Start AnyConnect</access-network-title>
<application>
    <mode>enable</mode>
    <id>home</id>
    <tab-title l10n="yes">Home</tab-title>
    <order>1</order>
</application>
<application>
    <mode>enable</mode>
    <id>web-access</id>
    <tab-title l10n="yes"><![CDATA[Web Applications</tab-title>
    <url-list-title l10n="yes"><![CDATA[Web Bookmarks</url-list-title>
    <order>2</order>
</application>
<application>
    <mode>enable</mode>
    <id>file-access</id>
    <tab-title l10n="yes"><![CDATA[Browse Networks</tab-title>
    <url-list-title l10n="yes"><![CDATA[File Folder Bookmarks</url-list-title>
    <order>3</order>
</application>
<application>
    <mode>enable</mode>
    <id>app-access</id>
    <tab-title l10n="yes"><![CDATA[Application Access</tab-title>
    <order>4</order>
</application>
<application>
    <mode>enable</mode>
    <id>net-access</id>
    <tab-title l10n="yes">AnyConnect</tab-title>
    <order>4</order>
</application>
<application>
    <mode>enable</mode>
    <id>help</id>
    <tab-title l10n="yes">Help</tab-title>
    <order>1000000</order>
</application>
<toolbar>
    <mode>enable</mode>
    <logout-prompt-text l10n="yes">Logout</logout-prompt-text>
    <prompt-box-title l10n="yes">Address</prompt-box-title>
    <browse-button-text l10n="yes">Browse</browse-button-text>
    <username-prompt-text l10n="yes"></username-prompt-text>
</toolbar>
<column>
    <width>100%</width>
    <order>1</order>
</column>
<pane>
    <type>TEXT</type>
    <mode>disable</mode>
    <title></title>
    <text></text>
    <notitle></notitle>
    <column></column>
    <row></row>
    <height></height>

```

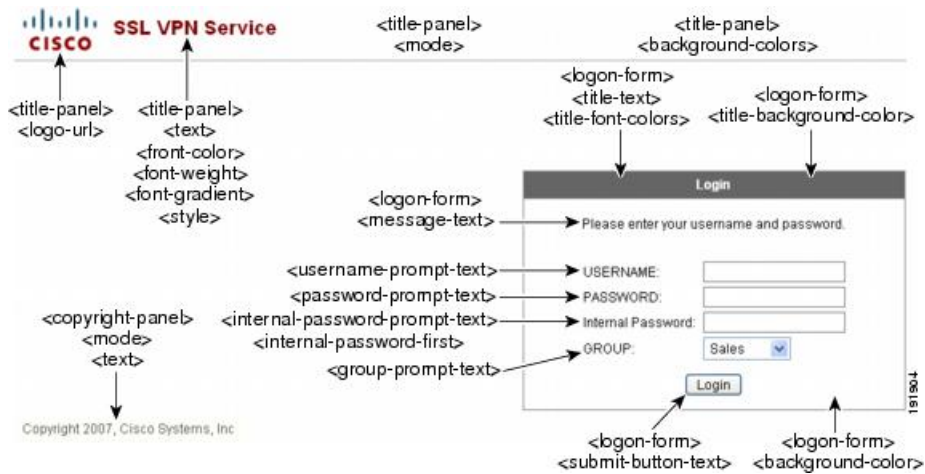
```

</pane>
<pane>
  <type>IMAGE</type>
  <mode>disable</mode>
  <title></title>
  <url l10n="yes"></url>
  <notitle></notitle>
  <column></column>
</row>
<height></height>
</pane>
<pane>
  <type>HTML</type>
  <mode>disable</mode>
  <title></title>
  <url l10n="yes"></url>
  <notitle></notitle>
  <column></column>
</row>
<height></height>
</pane>
<pane>
  <type>RSS</type>
  <mode>disable</mode>
  <title></title>
  <url l10n="yes"></url>
  <notitle></notitle>
  <column></column>
</row>
<height></height>
</pane>
<url-lists>
  <mode>group</mode>
</url-lists>
<home-page>
  <mode>standard</mode>
  <url></url>
</home-page>
</portal>
</custom>

```

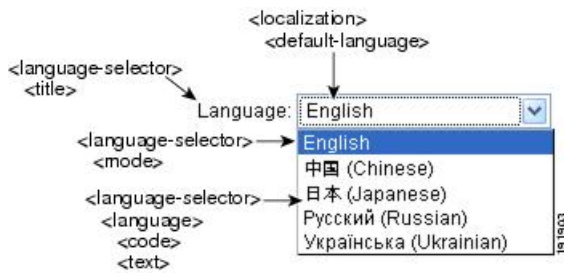
The following figure shows the Logon page and its customizing XML tags. All these tags are nested within the higher-level tag <auth-page>.

Figure 4: Logon Page and Associated XML Tags



The following figure shows the Language Selector drop-down list that is available on the Logon page, and the XML tags for customizing this feature. All these tags are nested within the higher-level <auth-page> tag.

Figure 5: Language Selector on Logon Screen and Associated XML Tags



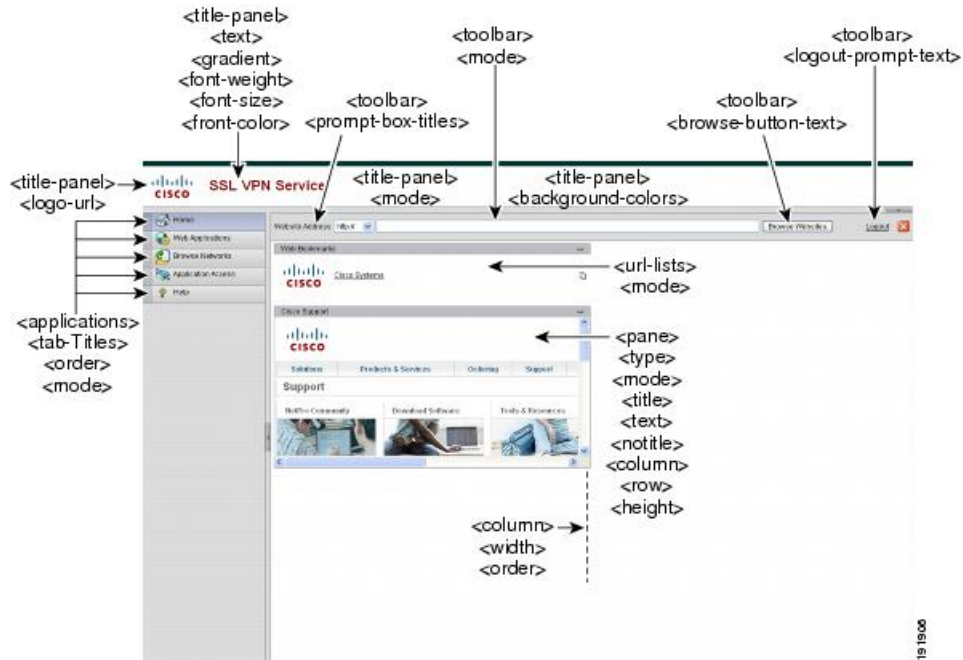
The following figure shows the Information Panel that is available on the Logon page, and the XML tags for customizing this feature. This information can appear to the left or right of the login box. These tags are nested within the higher-level <auth-page> tag.

Figure 6: Information Panel on Logon Screen and Associated XML Tags



The following figure shows the Portal page and the XML tags for customizing this feature. These tags are nested within the higher-level <auth-page> tag.

Figure 7: Portal Page and Associated XML Tags



Login Screen Advanced Customization

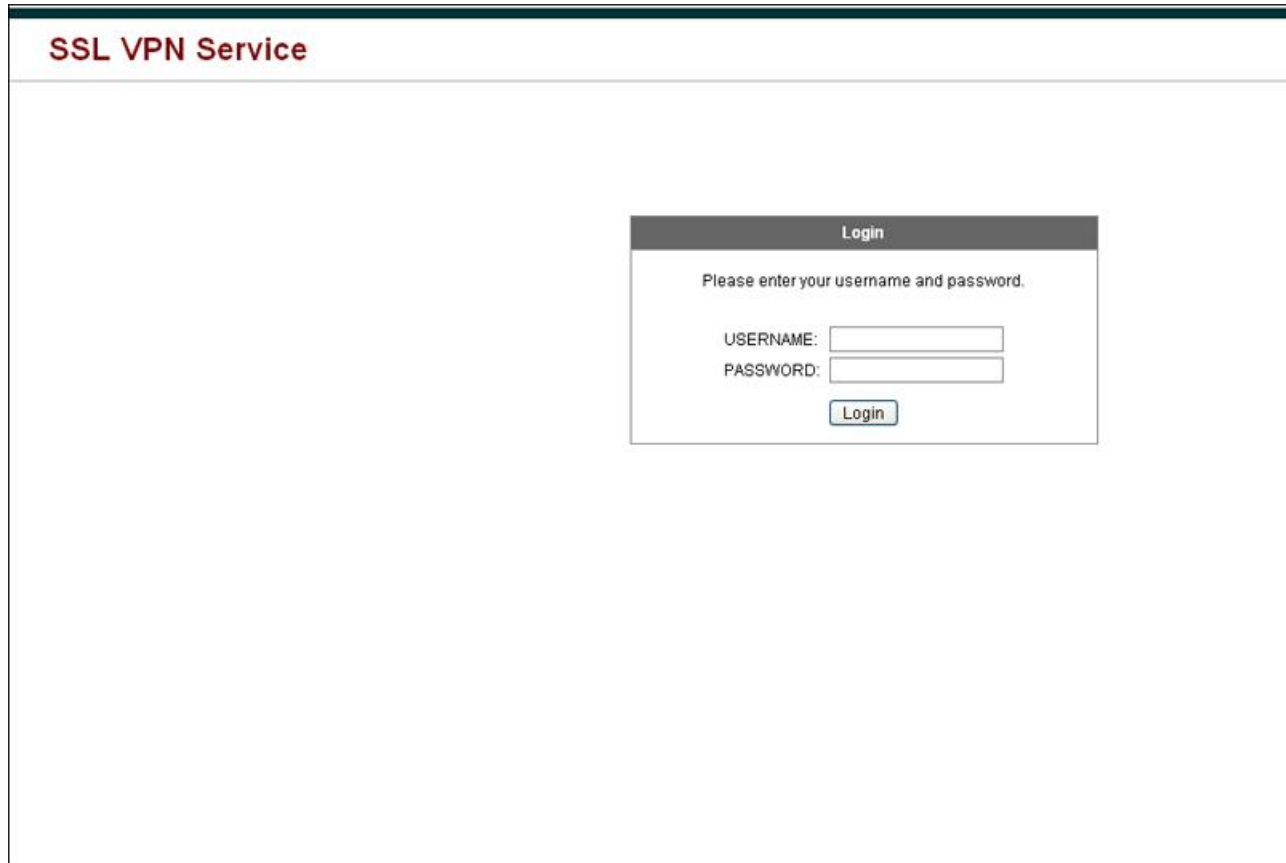
If you prefer to use your own, custom login screen, rather than changing specific screen elements of the login screen we provide, you can perform this advanced customization using the Full Customization feature.

With Full Customization, you provide the HTML for your own login screen, and you insert Cisco HTML code that calls functions on the ASA that create the Login form and the Language Selector drop-down list.

This section describes the modifications you need to make to your HTML code and the tasks required to configure the ASA to use your code.

The following figure shows the standard Cisco login screen that displays to Clientless SSL VPN users. The Login form is displayed by a function called by the HTML code.

Figure 8: Standard Cisco Login Page



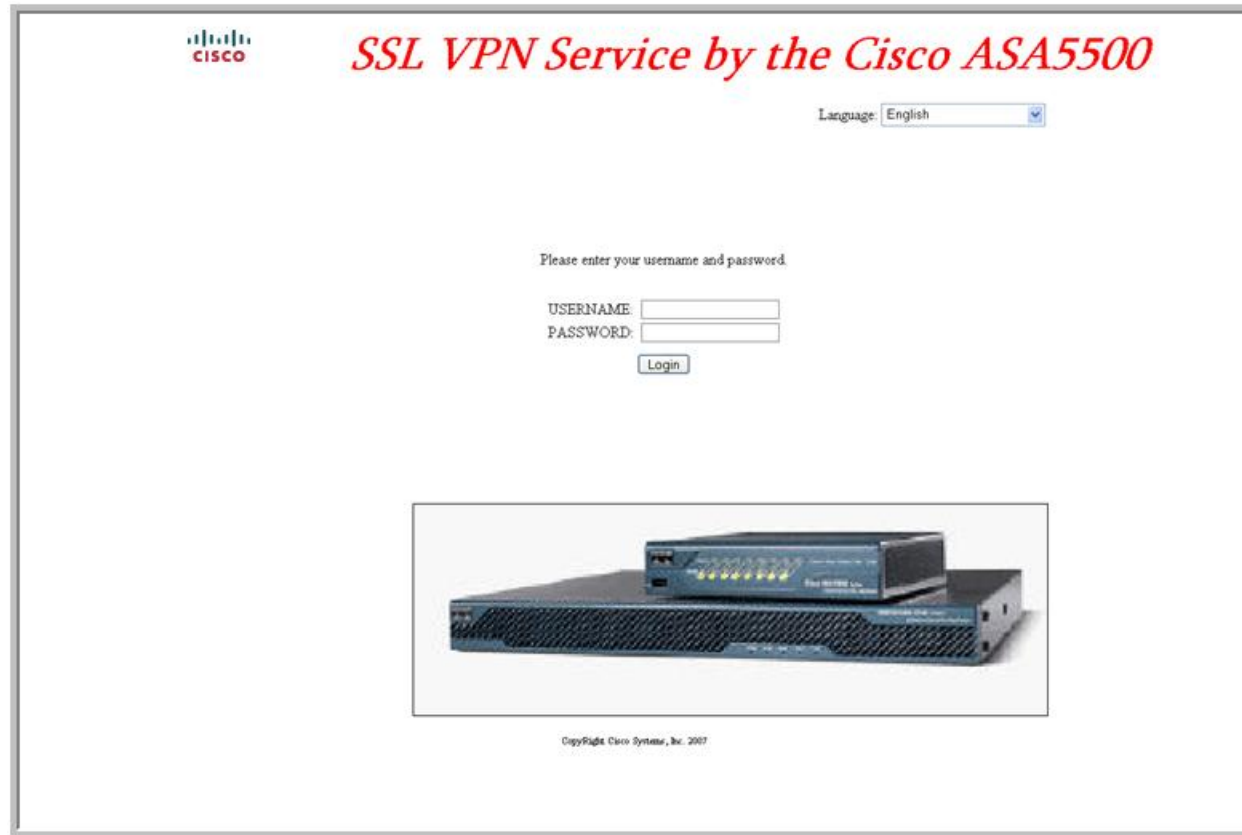
The following figure shows the Language Selector drop-down list. This feature is an option for Clientless SSL VPN users and is also called by a function in the HTML code of the login screen.

Figure 9: Language Selector Drop-down List



The following figure shows a simple example of a custom login screen enabled by the Full Customization feature.

Figure 10: Example of Full Customization of Login Screens



The following HTML code is used as an example and is the code that displays:

```
<head>
<meta http-equiv="Content-Type" content="text/html; charset=windows-1252">
<title>New Page 3</title>
<base target="_self">
</head>

<p align="center">
<font face="Snap ITC"
size="6" color="#FF00FF">
</font><font face="Snap ITC" color="#FF00FF" size="7">&nbsp;</font><i><b><font color="#FF0000"
size="7" face="Sylfaen"> SSL VPN Service by the Cisco ASA5500</font></b></i></p>

<body onload="cscs_ShowLoginForm('lform');cscs_ShowLanguageSelector('selector')">

<table>

<tr><td colspan=3 height=20 align=right><div id="selector" style="width:
300px"></div></td></tr>
<tr><td></td><td></td><td></td></tr>
<tr>
<td height="379"></td>
<td height="379"></td>
<td align=middle valign=middle>
<div id=lform >
<p>&nbsp;</p>

```

```

<p>&nbsp;</p>
<p>&nbsp;</p>
<p>Loading...</p>
</div>
</td>
</tr>
<tr>
<td width="251"></td>
<td width="1"></td>
<td align=right valign=right width="800">

</td></tr>

</table>

```

The indented code injects the Login form and the Language Selector on the screen. The function **cscsco_ShowLoginForm('lform')** injects the logon form. **cscsco_ShowLanguageSelector('selector')** injects the Language Selector.

Modify Your HTML File

Procedure

- Step 1** Name your file logon.inc. When you import the file, the ASA recognizes this filename as the logon screen.
- Step 2** Modify the paths of images used by the file to include `/+CSCOU+/`.
- Files that are displayed to remote users before authentication must reside in a specific area of the ASA cache memory represented by the path `/+CSCOU+/`. Therefore, the source for each image in the file must include this path.
- For example:
- ```
src="/+CSCOU+/asa5520.gif"
```
- Step 3** Insert the special HTML code below. This code contains the Cisco functions, described earlier, that inject the login form and language selector onto the screen.

```

<body onload="cscsco_ShowLoginForm('lform');cscsco_ShowLanguageSelector('selector')">

<table>

<tr><td colspan=3 height=20 align=right><div id="selector" style="width:
300px"></div></td></tr>
<tr><td></td><td></td><td></td></tr>
<tr>
<td height="379"></td>
<td height="379"></td>
<td align=middle valign=middle>
<div id=lform >
<p> </p>
<p> </p>
<p> </p>
<p>Loading...</p>
</div>
</td>
</tr>
<tr>

```



```

<td width="251"></td>
<td width="1"></td>
<td align=right valign=right width="800">

</td></tr>

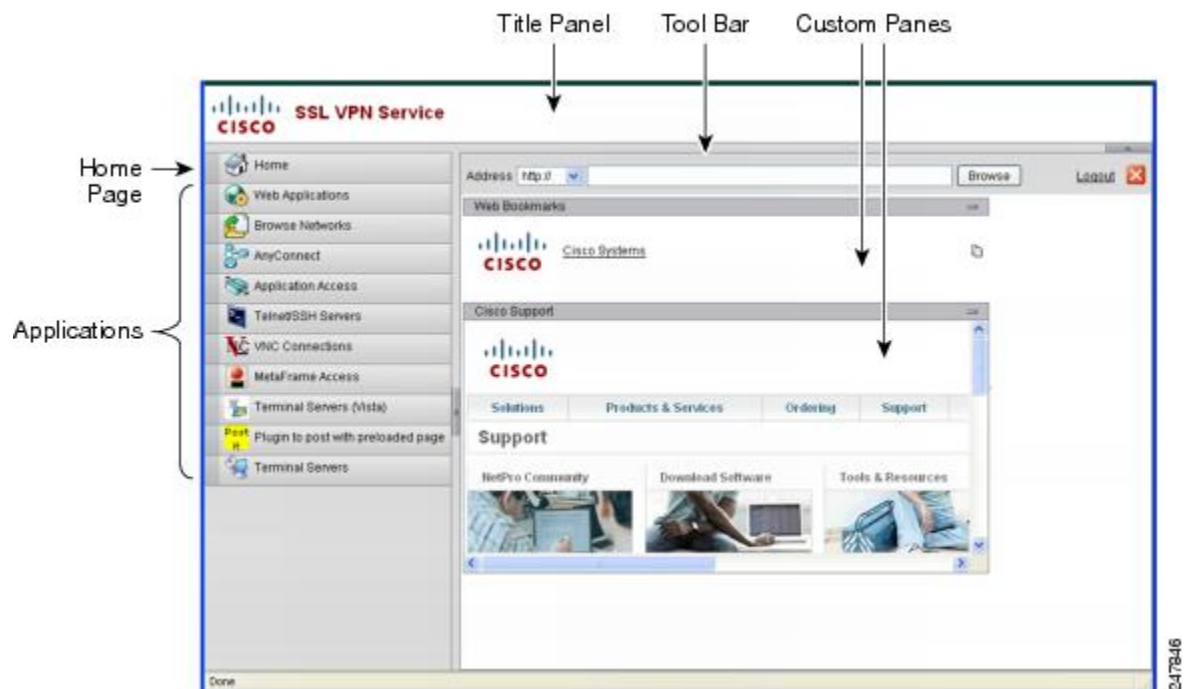
</table>

```

## Customize the Portal Page

The following figure shows the portal page and the pre-defined components you can customize:

**Figure 11: Customizable Components of the Portal Page**



In addition to customizing the components of the page, you can divide the portal page into custom panes that display text, an image, an RSS feed, or HTML.

To customize the portal page, follow this procedure. You can preview your changes for each component by clicking the Preview button.

### Procedure

- Step 1** Choose **Configuration > Remote Access VPN > Clientless SSL VPN Access > Portal > Customization**.
- Step 2** Click **Add**.
- Step 3** In the **Customization Object Name** field, enter the name for the customization.
- Step 4** In the left pane, click **Portal Page**.
- Step 5** Enter the title in the **Browser Window Title** field.

- Step 6** To display and customize the title panel, click **Title Panel** and check the **Display title panel** check box. Enter the text to display as the title and specify a logo. You can also specify any font styles.
- Step 7** To enable and customize the toolbar, click **Toolbar** and check the **Display toolbar** check box. Customize the **Prompt Box Title**, **Browse Button Text**, **Logout Prompt** as desired.  
Enabling the toolbar also displays the user name which was used to login. The **Username** field must contain **Username** as the valid keyword.
- Step 8** To customize the applications list, click **Applications** and check the **Show navigation panel** check box. Applications enabled in the ASA configuration, including client-server plugins and port forwarding applications are displayed in a table. Enable or disable these applications in this table as required.
- Step 9** To create custom panes in the portal page space, click **Custom Panes**. Configure the number of columns and their width. If required, create custom panes and divide the window into rows and columns for text, images, RSS feeds, or HTML pages, as desired.
- Step 10** To specify a home page URL, click **Home Page** and check the **Enable custom intranet web page** check box. Choose a bookmark mode that defines how bookmarks are organized.
- Step 11** Click **Timeout Alerts** to configure a timeout alert message and a tooltip.
- Step 12** Click **OK**.

---

### What to do next

Read about [Configuring Custom Portal Timeout Alerts](#).

## Configure Custom Portal Timeout Alerts

So that users of the Clientless SSL VPN feature can manage their time in the VPN session, the Clientless SSL VPN portal page displays a countdown timer showing the total time left before the clientless VPN session expires. Sessions can timeout due to inactivity or because they have reached the end of a maximum allowed connection time that you have configured.

You can create custom messages to alert users that their session is about to end because of an idle timeout or a session timeout. Your custom message replaces the default idle timeout message. The default message is, “Your session will expire in %s .” The %s place holder in your message is replaced by a ticking countdown timer.

### Procedure

---

- Step 1** Start ASDM and choose **Configuration > Remote Access VPN > Clientless SSL VPN Access > Portal > Customization**.
- Step 2** Click **Add** to add a new customization object or choose an existing customization object and click **Edit** to add a custom idle timeout message to an existing customization object.
- Step 3** In the Add / Edit Customization Object pane, expand the Portal Page node on the navigation tree and click **Timeout Alerts**.
- Step 4** Check **Enable alert visual tooltip (red background for timer countdown)**. This displays the countdown timer as a tool tip on a red background. When users click the Time left area, the time area expands to display your custom timeout alert message. If you leave this box unchecked, users see the custom timeout alerts in a pop-up window.

- Step 5** Enter a message in the Idle Timeout Message box and in the Session Timeout Message box. An example of a message could be, `Warning: Your session will end in %s. Please complete your work and prepare to close your applications.`
- Step 6** Click **OK**.
- Step 7** Click **Apply**.

## Specify a Custom Timeout Alert in a Customization Object File

If you desire, you can edit an existing customization object file outside of the ASA and import it to the ASA.

The timeout messages are configured in the `<timeout-alerts>` XML element of your XML customization object file. The `<timeout-alerts>` element is a child of the `<portal>` element. The `<portal>` element is a child of the `<custom>` element.

The `<timeout-alerts>` element is placed after the `<home-page>` element and before any `<application>` elements in the order of the `<portal>` child elements.

You need to specify these child-elements of `<timeout-alerts>`:

- `<alert-tooltip>` – If set to “yes”, users see the countdown timer on a red background as a tool tip. Clicking the count down timer expands the tooltip to display your custom message. If set to “no” or if is undefined, users receive your custom messages in pop-up windows.
- `<session-timeout-message>` – Enter your custom session timeout message in this element. If set and not empty, users receive your custom message instead of the default message. The `%s` place holder in the message will be replaced with a ticking countdown timer.
- `<idle-timeout-message>` – Enter your custom idle timeout message in this element. If set and not empty, users receive your custom message instead of the default message. The `%s` place holder will be replaced with a ticking countdown timer.

### What To Do Next

Read about [Importing and Exporting Customization Objects and Creating XML-Based Portal Customization Objects and URL Lists](#).

### Configuration Example for Timeout-alert Element and Child Elements

This example shows only the `<timeout-alerts>` elements of the `<portal>` element.

Do not cut and paste this example into an existing customization object.

```
<portal>
 <window></window>
 <title-panel></title-panel>
 <toolbar></toolbar>
 <url-lists></url-lists>
 <navigation-panel></navigation-panel>
 <home-page>
 <timeout-alerts>
 <alert-tooltip>yes</alert-tooltip>
 <idle-timeout-message>You session expires in %s due to
idleness.</idle-timeout-message>
 <session-timeout-message>Your session expires in %s.</session-timeout-message>
 </timeout-alerts>
```

```

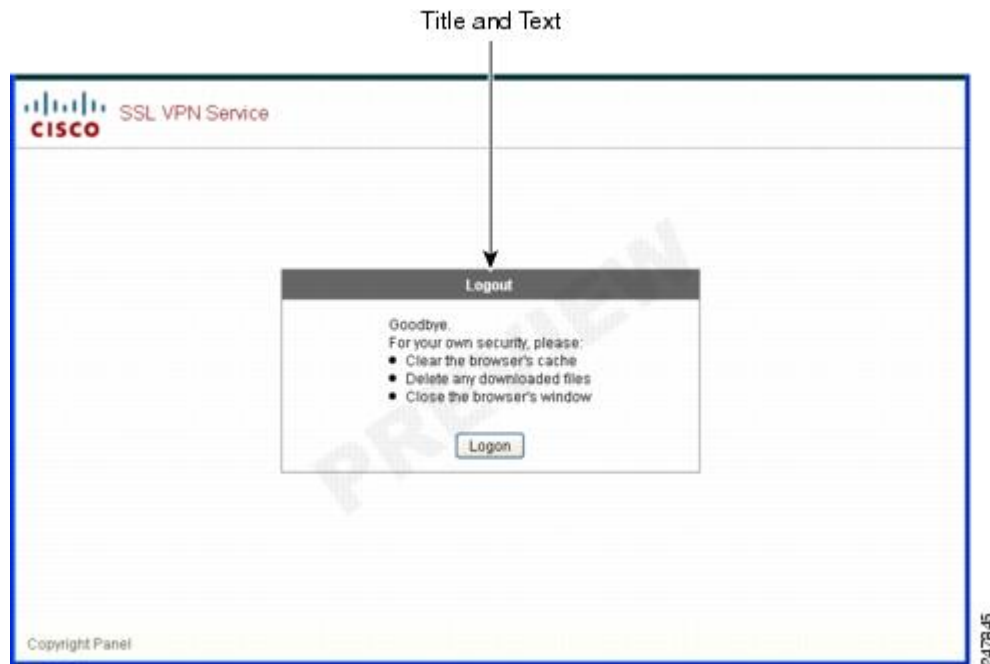
<application></application>
<column></column>
<pane></pane>
<external-portal></external-portal>
</portal>

```

## Customize the Logout Page

The following figure shows the logout page you can customize:

*Figure 12: Components of the Logout Page*



To customize the logout page, follow this procedure. You can preview your changes for each component by clicking the Preview button:

### Procedure

- 
- Step 1** Go to Logout Page. Customize the title or text as you desire.
  - Step 2** For the convenience of the user, you can display the Login button on the Logout page. To do this, check Show logon button. Customize the button text, if desired.
  - Step 3** Customize the title font or background, as desired.
  - Step 4** Click **OK**, then apply the changes to the customization object you edited.
-

## Add Customization Object

### Procedure

---

- Step 1** Click **Add** and enter a name for the new customization object. Maximum 64 characters, no spaces.
- Step 2** (Optional) Click **Find** to search for a customization object. Start typing in the field, and the tool searches the beginning characters of every field for a match. You can use wild cards to expand your search. For example, typing *sal* in the Find field matches a customization object named sales but not a customization object named wholesalers. If you type *\*sal* in the Find field, the search finds the first instance of either sales or wholesalers in the table.
- Use the up and down arrows to skip up or down to the next string match. Check the **Match Case** check box to make your search case sensitive.
- Step 3** The onscreen keyboard enables the keyboard when clicking on the Password field of the Portal page during login. It is not enabled for the Username box. You can specify when the onscreen keyboard shows on portal pages. The choices are as follows:
- Do not show OnScreen Keyboard
  - Show only for the login page
  - Show for all portal pages requiring authentication
- Step 4** (Optional) Highlight a customization object and click **Assign** to assign the selected object to one or more group policies, connection profiles, or LOCAL users.
- 

## Import/Export Customization Object

You can import or export already-existing customization objects. Import an object to apply to end users. Export a customization object already resident on the ASA for editing purposes, after which you can reimport it.

### Procedure

---

- Step 1** Identify the customization object by name. Maximum 64 characters, no spaces.
- Step 2** Choose the method to import or export the customization file:
- Local computer—Choose this method to import a file that resides on the local PC.
  - Path—Provide the path to the file.
  - Browse Local Files—Browse to the path for the file.
  - Flash file system—Choose this method to export a file that resides on the ASA.
  - Path—Provide the path to the file.
  - Browse Flash—Browse to the path for the file.

- Remote server—Choose this option to import a customization file that resides on a remote server accessible from the ASA.
- Path—Identify the method to access the file (ftp, http, or https), and provide the path to the file.

**Step 3** Click to import or export the file.

## Understand the XML Customization File Structure

The following figure represents the file structure for an XML customization object.



**Note** Absence of a parameter/tag results in a default/inherited value, while presence results in setting the parameter/tag value even it is an empty string.

**Table 1: XML-Based Customization File Structure**

Tag	Type	Values	Preset value	Description
custom	node	—	—	Root tag
auth-page	node	—	—	Tag-container of authentication page configuration
window	node	—	—	Browser window
title-text	string	Arbitrary string	empty string	—
title-panel	node	—	—	The page top pane with a logo and a text
mode	text	enable disable	disable	—
text	text	Arbitrary string	empty string	—
logo-url	text	Arbitrary URL	empty image URL	—
copyright-panel	node	—	—	The page bottom pane with a copyright information
mode	text	enable disable	disable	—
text	text	Arbitrary URL	empty string	—
info-panel	node	—	—	The pane with a custom text and image

mode	string	enable disable	disable	—
image-position	string	above below	above	The image position, relative to text
image-url	string	Arbitrary URL	empty image	—
text	string	Arbitrary string	empty string	—
logon-form	node	—	—	The form with username, password, group prompt
title-text	string	Arbitrary string	Logon	—
message-text	string	Arbitrary string	empty string	—
username-prompt-text	string	Arbitrary string	Username	—
password-prompt-text	string	Arbitrary string	Password	—
<del>internal password prompt text</del>	string	Arbitrary string	Internal Password	—
group-prompt-text	string	Arbitrary string	Group	—
submit-button-text	string	Arbitrary string	Logon	—
logout-form	node	—	—	The form with a logout message and the buttons to login or close the window
title-text	string	Arbitrary string	Logout	—
message-text	string	Arbitrary string	Empty string	—
login-button-text	string	Arbitrary string	Login	—
close-button-text	string	Arbitrary string	Close window	—
language-selector	node	—	—	The drop-down list to choose a language
mode	string	enable disable	disable	—
title	text	—	Language	The prompt text to choose language

language	node (multiple)	—	—	—
code	string	—	—	—
text	string	—	—	—
portal	node	—	—	Tag-container of the portal page configuration
window	node	—	—	see authentication page description
title-text	string	Arbitrary string	Empty string	—
title-panel	node	—	—	see authentication page description
mode	string	enable disable	Disable	—
text	string	Arbitrary string	Empty string	—
logo-url	string	Arbitrary URL	Empty image URL	—
navigation-panel	node	—	—	The pane on the left with application tabs
mode	string	enable disable	enable	—
application	node (multiple)	—	N/A	The node changes defaults for the configured (by id) application
id	string	For stock application web-access file-access app-access net-access help For ins: Unique plug-in	N/A	—
tab-title	string	—	N/A	—



order	number	—	N/A	Value used to sort elements. The default element order values have step 1000, 2000, 3000, etc. For example, to insert an element between the first and second element, use a value 1001 – 1999.
url-list-title	string	—	N/A	If the application has bookmarks, the title for the panel with grouped bookmarks
mode	string	enable disable	N/A	v
toolbar	node	—	—	—
mode	string	enable disable	Enable	—
prompt-box-title	string	Arbitrary string	Address	Title for URL prompt list
browse-button-text	string	Arbitrary string	Browse	Browse button text
logout-prompt-text	string	Arbitrary string	Logout	—
column	node (multiple)	—	—	One column will be shown by default
width	string	—	N/A	—
order	number	—	N/A	Value used to sort elements.
url-lists	node	—	—	URL lists are considered to be default elements on the portal home page, if they are not explicitly switched off

mode	string	group   nogroup	group	Modes: group – elements grouped by application type i.e. Web Bookmarks, File Bookmarks) no-group – url-lists are shown in separate panes disable – do not show URL lists by default
panel	node (multiple)	—	—	Allows to configure extra panes
mode	string	enable disable	—	Used to temporarily switch off the panel without removing its configuration
title	string	—	—	—
type	string	—	—	Supported types: RSS IMAGE TEXT HTML
url	string	—	—	URL for RSS,IMAGE or HTML type paned
url-mode	string	—	—	Modes: mangle, no-mangle
text	string	—	—	Text for TEXT type panes
column	number	—	—	—

## Configuration Example for Customization

The following example illustrates the following customization options:

- Hides tab for the File access application
- Changes title and order of Web Access application

- Defines two columns on the home page
- Adds an RSS pane
- Adds three panes (text, image, and html) at the top of second pane

```

<custom name="Default">
 <auth-page>

 <window>
 <title-text l10n="yes">title WebVPN Logon</title>
 </window>

 <title-panel>
 <mode>enable</mode>
 <text l10n="yes">EXAMPLE WebVPN</text>
 <logo-url>http://www.example.com/images/EXAMPLE.gif</logo-url>
 </title-panel>

 <copyright>
 <mode>enable</mode>
 <text l10n="yes">(c) Copyright, EXAMPLE Inc., 2006</text>
 </copyright>

 <info-panel>
 <mode>enable</mode>
 <image-url>/+CSCOE+/custom/EXAMPLE.jpg</image-url>
 <text l10n="yes">
 <![CDATA[
 <div>
 Welcome to WebVPN !.
 </div>
]>
 </text>
 </info-panel>
 <logon-form>
 <form>
 <title-text l10n="yes">title WebVPN Logon</title>
 <message-text l10n="yes">message WebVPN Logon</title>
 <username-prompt-text l10n="yes">Username</username-prompt-text>
 <password-prompt-text l10n="yes">Password</password-prompt-text>
 <internal-password-prompt-text l10n="yes">Domain
password</internal-password-prompt-text>
 <group-prompt-text l10n="yes">Group</group-prompt-text>
 <submit-button-text l10n="yes">Logon</submit-button-text>
 </form>
 </logon-form>
 <logout-form>
 <form>
 <title-text l10n="yes">title WebVPN Logon</title>
 <message-text l10n="yes">message WebVPN Logon</title>
 <login-button-text l10n="yes">Login</login-button-text>
 <close-button-text l10n="yes">Logon</close-button-text>
 </form>
 </logout-form>

 <language-selector>
 <language>
 <code l10n="yes">code1</code>
 <text l10n="yes">text1</text>
 </language>
 <language>
 <code l10n="yes">code2</code>

```

```

 <text l10n="yes">text2</text>
 </language>
</language-selector>

</auth-page>
<portal>

 <window>
 <title-text l10n="yes">title WebVPN Logon</title>
 </window>

 <title-panel>
 <mode>enable</mode>
 <text l10n="yes">EXAMPLE WebVPN</text>
 <logo-url>http://www.example.com/logo.gif</logo-url>
 </title-panel>

 <navigation-panel>
 <mode>enable</mode>
 </navigation-panel>

 <application>
 <id>file-access</id>
 <mode>disable</mode>
 </application>
 <application>
 <id>web-access</id>
 <tab-title>EXAMPLE Intranet</tab-title>
 <order>3001</order>
 </application>

 <column>
 <order>2</order>
 <width>40%</width>
 </column>
 <column>
 <order>1</order>
 <width>60%</width>
 </column>

 <url-lists>
 <mode>no-group</mode>
 </url-lists>

 <pane>
 <id>rss_pane</id>
 <type>RSS</type>
 <url>rss.example.com?id=78</url>
 </pane>
 <pane>
 <type>IMAGE</type>
 <url>http://www.example.com/logo.gif</url>
 <column>1</column>
 <row>2</row>
 </pane>

 <pane>
 <type>HTML</type>
 <title>EXAMPLE news</title>
 <url>http://www.example.com/news.html</url>
 <column>1</column>
 <row>3</row>
 </pane>

```

```

 </portal>

</custom>

```

## Use the Customization Template

A customization template, named `Template`, contains all currently employed tags with corresponding comments that describe how to use them. Use the **export** command to download the customization template from the ASA, as follows:

```

hostname# export webvpn customization Template tftp://webserver/default.xml
hostname#

```

You cannot change or delete the file `Template`. When you export it, as in this example, you are saving it to a new name, `default.xml`. After you make your changes to this file to create a customization object that meets the needs of your organization, import it to the ASA, either as `default.xml` or another name of your choosing. For example:

```

hostname# import webvpn customization General tftp://webserver/custom.xml
hostname#

```

where you import an XML object called `custom.xml`, and name it `General` on the ASA.

## The Customization Template

The customization template, named `Template`, follows:

```

<?xml version="1.0" encoding="UTF-8" ?>
- <!--

```

```

Copyright (c) 2008,2009 by Cisco Systems, Inc.
All rights reserved.

```

Note: all white spaces in tag values are significant and preserved.

```

Tag: custom
Description: Root customization tag

```

```

Tag: custom/languages
Description: Contains list of languages, recognized by ASA
Value: string containing comma-separated language codes. Each language code is
 a set dash-separated alphanumeric characters, started with
 alpha-character (for example: en, en-us, irokese8-language-us)
Default value: en-us

```

```

Tag: custom/default-language
Description: Language code that is selected when the client and the server
 were not able to negotiate the language automatically.
 For example the set of languages configured in the browser
 is "en,ja", and the list of languages, specified by
 'custom/languages' tag is "cn,fr", the default-language will be
 used.

```

```

Value: string, containing one of the language coded, specified in
'custom/languages' tag above.
Default value: en-us

```

```

Tag: custom/auth-page
Description: Contains authentication page settings

Tag: custom/auth-page/window
Description: Contains settings of the authentication page browser window

Tag: custom/auth-page/window/title-text
Description: The title of the browser window of the authentication page
Value: arbitrary string
Default value: Browser's default value

Tag: custom/auth-page/title-panel
Description: Contains settings for the title panel

Tag: custom/auth-page/title-panel/mode
Description: The title panel mode
Value: enable|disable
Default value: disable
Tag: custom/auth-page/title-panel/text
Description: The title panel text.
Value: arbitrary string
Default value: empty string

Tag: custom/auth-page/title-panel/logo-url
Description: The URL of the logo image (imported via "import webvpn webcontent")
Value: URL string
Default value: empty image URL

Tag: custom/auth-page/title-panel/background-color
Description: The background color of the title panel
Value: HTML color format, for example #FFFFFF
Default value: #FFFFFF

Tag: custom/auth-page/title-panel/font-color
Description: The background color of the title panel
Value: HTML color format, for example #FFFFFF
Default value: #000000

Tag: custom/auth-page/title-panel/font-weight
Description: The font weight
Value: CSS font size value, for example bold, bolder, lighter etc.
Default value: empty string

Tag: custom/auth-page/title-panel/font-size
Description: The font size
Value: CSS font size value, for example 10pt, 8px, x-large, smaller etc.
Default value: empty string

Tag: custom/auth-page/title-panel/gradient
Description: Specifies using the background color gradient
Value: yes|no
Default value: no

Tag: custom/auth-page/title-panel/style
Description: CSS style of the title panel
Value: CSS style string

```

Default value: empty string

\*\*\*\*\*

Tag: custom/auth-page/copyright-panel  
Description: Contains the copyright panel settings

Tag: custom/auth-page/copyright-panel/mode  
Description: The copyright panel mode  
Value: enable|disable  
Default value: disable

Tag: custom/auth-page/copyright-panel/text  
Description: The copyright panel text  
Value: arbitrary string  
Default value: empty string

\*\*\*\*\*

Tag: custom/auth-page/info-panel  
Description: Contains information panel settings

Tag: custom/auth-page/info-panel/mode  
Description: The information panel mode  
Value: enable|disable  
Default value: disable

Tag: custom/auth-page/info-panel/image-position  
Description: Position of the image, above or below the informational panel text  
Values: above|below  
Default value: above

Tag: custom/auth-page/info-panel/image-url  
Description: URL of the information panel image (imported via "import webvpn webcontent")  
Value: URL string  
Default value: empty image URL

Tag: custom/auth-page/info-panel/text  
Description: Text of the information panel  
Text: arbitrary string  
Default value: empty string

\*\*\*\*\*

Tag: custom/auth-page/logon-form  
Description: Contains logon form settings

Tag: custom/auth-page/logon-form/title-text  
Description: The logon form title text  
Value: arbitrary string  
Default value: "Logon"

Tag: custom/auth-page/logon-form/message-text  
Description: The message inside of the logon form  
Value: arbitrary string  
Default value: empty string

Tag: custom/auth-page/logon-form/username-prompt-text  
Description: The username prompt text  
Value: arbitrary string  
Default value: "Username"

Tag: custom/auth-page/logon-form/password-prompt-text  
Description: The password prompt text  
Value: arbitrary string

Default value: "Password"

Tag: custom/auth-page/logon-form/internal-password-prompt-text

Description: The internal password prompt text

Value: arbitrary string

Default value: "Internal Password"

Tag: custom/auth-page/logon-form/group-prompt-text

Description: The group selector prompt text

Value: arbitrary string

Default value: "Group"

Tag: custom/auth-page/logon-form/submit-button-text

Description: The submit button text

Value: arbitrary string

Default value: "Logon"

Tag: custom/auth-page/logon-form/internal-password-first

Description: Sets internal password first in the order

Value: yes|no

Default value: no

Tag: custom/auth-page/logon-form/title-font-color

Description: The font color of the logon form title

Value: HTML color format, for example #FFFFFF

Default value: #000000

Tag: custom/auth-page/logon-form/title-background-color

Description: The background color of the logon form title

Value: HTML color format, for example #FFFFFF

Default value: #000000

Tag: custom/auth-page/logon-form/font-color

Description: The font color of the logon form

Value: HTML color format, for example #FFFFFF

Default value: #000000

Tag: custom/auth-page/logon-form/background-color

Description: The background color of the logon form

Value: HTML color format, for example #FFFFFF

Default value: #000000

\*\*\*\*\*

Tag: custom/auth-page/logout-form

Description: Contains the logout form settings

Tag: custom/auth-page/logout-form/title-text

Description: The logout form title text

Value: arbitrary string

Default value: "Logout"

Tag: custom/auth-page/logout-form/message-text

Description: The logout form message text

Value: arbitrary string

Default value: Goodbye.

For your own security, please:

Clear the browser's cache

Delete any downloaded files

Close the browser's window



```

Tag: custom/auth-page/logout-form/login-button-text
Description: The text of the button sending the user to the logon page
Value: arbitrary string
Default value: "Logon"

Tag: custom/auth-page/language-selector
Description: Contains the language selector settings

Tag: custom/auth-page/language-selector/mode
Description: The language selector mode
Value: enable|disable
Default value: disable

Tag: custom/auth-page/language-selector/title
Description: The language selector title
Value: arbitrary string
Default value: empty string

Tag: custom/auth-page/language-selector/language (multiple)
Description: Contains the language settings

Tag: custom/auth-page/language-selector/language/code
Description: The code of the language
Value (required): The language code string

Tag: custom/auth-page/language-selector/language/text
Description: The text of the language in the language selector drop-down box
Value (required): arbitrary string

Tag: custom/portal
Description: Contains portal page settings

Tag: custom/portal/window
Description: Contains the portal page browser window settings

Tag: custom/portal/window/title-text
Description: The title of the browser window of the portal page
Value: arbitrary string
Default value: Browser's default value

Tag: custom/portal/title-panel
Description: Contains settings for the title panel

Tag: custom/portal/title-panel/mode
Description: The title panel mode
Value: enable|disable
Default value: disable

Tag: custom/portal/title-panel/text
Description: The title panel text.
Value: arbitrary string
Default value: empty string

Tag: custom/portal/title-panel/logo-url
Description: The URL of the logo image (imported via "import webvpn webcontent")

```

Value: URL string  
 Default value: empty image URL

Tag: custom/portal/title-panel/background-color  
 Description: The background color of the title panel  
 Value: HTML color format, for example #FFFFFF  
 Default value: #FFFFFF

Tag: custom/auth-pa/title-panel/font-color  
 Description: The background color of the title panel  
 Value: HTML color format, for example #FFFFFF  
 Default value: #000000

Tag: custom/portal/title-panel/font-weight  
 Description: The font weight  
 Value: CSS font size value, for example bold, bolder, lighter etc.  
 Default value: empty string

Tag: custom/portal/title-panel/font-size  
 Description: The font size  
 Value: CSS font size value, for example 10pt, 8px, x-large, smaller etc.  
 Default value: empty string

Tag: custom/portal/title-panel/gradient  
 Description: Specifies using the background color gradient  
 Value: yes|no  
 Default value: no

Tag: custom/portal/title-panel/style  
 Description: CSS style for title text  
 Value: CSS style string  
 Default value: empty string

\*\*\*\*\*

Tag: custom/portal/application (multiple)  
 Description: Contains the application setting

Tag: custom/portal/application/mode  
 Description: The application mode  
 Value: enable|disable  
 Default value: enable

Tag: custom/portal/application/id  
 Description: The application ID. Standard application ID's are: home, web-access, file-access, app-access, network-access, help  
 Value: The application ID string  
 Default value: empty string

Tag: custom/portal/application/tab-title  
 Description: The application tab text in the navigation panel  
 Value: arbitrary string  
 Default value: empty string

Tag: custom/portal/application/order  
 Description: The order of the application's tab in the navigation panel. Applications with lesser order go first.  
 Value: arbitrary number  
 Default value: 1000

Tag: custom/portal/application/url-list-title  
 Description: The title of the application's URL list pane (in group mode)  
 Value: arbitrary string  
 Default value: Tab title value concatenated with "Bookmarks"

\*\*\*\*\*

Tag: custom/portal/navigation-panel  
Description: Contains the navigation panel settings

Tag: custom/portal/navigation-panel/mode  
Description: The navigation panel mode  
Value: enable|disable  
Default value: enable

\*\*\*\*\*

Tag: custom/portal/toolbar  
Description: Contains the toolbar settings

Tag: custom/portal/toolbar/mode  
Description: The toolbar mode  
Value: enable|disable  
Default value: enable

Tag: custom/portal/toolbar/prompt-box-title  
Description: The universal prompt box title  
Value: arbitrary string  
Default value: "Address"

Tag: custom/portal/toolbar/browse-button-text  
Description: The browse button text  
Value: arbitrary string  
Default value: "Browse"

Tag: custom/portal/toolbar/logout-prompt-text  
Description: The logout prompt text  
Value: arbitrary string  
Default value: "Logout"

\*\*\*\*\*

Tag: custom/portal/column (multiple)  
Description: Contains settings of the home page column(s)

Tag: custom/portal/column/order  
Description: The order the column from left to right. Columns with lesser order values go first  
Value: arbitrary number  
Default value: 0

Tag: custom/portal/column/width  
Description: The home page column width  
Value: percent  
Default value: default value set by browser  
Note: The actual width may be increased by browser to accommodate content

\*\*\*\*\*

Tag: custom/portal/url-lists  
Description: Contains settings for URL lists on the home page

Tag: custom/portal/url-lists/mode  
Description: Specifies how to display URL lists on the home page:  
group URL lists by application (group) or  
show individual URL lists (nogroup).  
URL lists fill out cells of the configured columns, which are not taken  
by custom panes.

Use the attribute value "nodisplay" to not show URL lists on the home page.

```

Value: group|nogroup|nodisplay
Default value: group

Tag: custom/portal/pane (multiple)
Description: Contains settings of the custom pane on the home page

Tag: custom/portal/pane/mode
Description: The mode of the pane
Value: enable|disable
Default value: disable

Tag: custom/portal/pane/title
Description: The title of the pane
Value: arbitrary string
Default value: empty string

Tag: custom/portal/pane/notitle
Description: Hides pane's title bar
Value: yes|no
Default value: no

Tag: custom/portal/pane/type
Description: The type of the pane. Supported types:
 TEXT - inline arbitrary text, may contain HTML tags;
 HTML - HTML content specified by URL shown in the individual iframe;
 IMAGE - image specified by URL
 RSS - RSS feed specified by URL
Value: TEXT|HTML|IMAGE|RSS
Default value: TEXT

Tag: custom/portal/pane/url
Description: The URL for panes with type HTML, IMAGE or RSS
Value: URL string
Default value: empty string

Tag: custom/portal/pane/text
Description: The text value for panes with type TEXT
Value: arbitrary string
Default value: empty string

Tag: custom/portal/pane/column
Description: The column where the pane located.
Value: arbitrary number
Default value: 1

Tag: custom/portal/pane/row
Description: The row where the pane is located
Value: arbitrary number
Default value: 1

Tag: custom/portal/pane/height
Description: The height of the pane
Value: number of pixels
Default value: default value set by browser

Tag: custom/portal/browse-network-title
Description: The title of the browse network link
Value: arbitrary string

```

Default value: Browse Entire Network

Tag: custom/portal/access-network-title

Description: The title of the link to start a network access session

Value: arbitrary string

Default value: Start AnyConnect

```
-->
- <custom>
- <localization>
<languages>en,ja,zh,ru,ua</languages>
<default-language>en</default-language>
</localization>
- <auth-page>
- <window>
- <title-text l10n="yes">
- <![CDATA[
WebVPN Service

</title-text>
</window>
- <language-selector>
<mode>disable</mode>
<title l10n="yes">Language:</title>
- <language>
<code>en</code>
<text>English</text>
</language>
- <language>
<code>zh</code>
<text>?? (Chinese)</text>
</language>
- <language>
<code>ja</code>
<text>?? (Japanese)</text>
</language>
- <language>
<code>ru</code>
<text>??????? (Russian)</text>
</language>
- <language>
<code>ua</code>
<text>????????? (Ukrainian)</text>
</language>
</language-selector>
- <logon-form>
- <title-text l10n="yes">
- <![CDATA[
Login

</title-text>
- <title-background-color>
- <![CDATA[
#666666

</title-background-color>
- <title-font-color>
- <![CDATA[
#ffffff

</title-font-color>
- <message-text l10n="yes">
- <![CDATA[
```

```

Please enter your username and password.

</message-text>
- <username-prompt-text l10n="yes">
- <![CDATA[
USERNAME:

</username-prompt-text>
- <password-prompt-text l10n="yes">
- <![CDATA[
PASSWORD:

</password-prompt-text>
<internal-password-prompt-text l10n="yes" />
<internal-password-first>no</internal-password-first>
- <group-prompt-text l10n="yes">
- <![CDATA[
GROUP:

</group-prompt-text>
- <submit-button-text l10n="yes">
- <![CDATA[
Login

</submit-button-text>
- <title-font-color>
- <![CDATA[
#ffffff

</title-font-color>
- <title-background-color>
- <![CDATA[
#666666

</title-background-color>
<font-color>#000000</font-color>
<background-color>#ffffff</background-color>
</logon-form>
- <logout-form>
- <title-text l10n="yes">
- <![CDATA[
Logout

</title-text>
- <message-text l10n="yes">
- <![CDATA[
Goodbye.

</message-text>
</logout-form>
- <title-panel>
<mode>enable</mode>
- <text l10n="yes">
- <![CDATA[
WebVPN Service

</text>
<logo-url l10n="yes">/+CSCOU+/cisco_logo.gif</logo-url>
<gradient>yes</gradient>
<style />
- <background-color>
- <![CDATA[
#ffffff

```

```

</background-color>
- <font-size>
- <![CDATA[
larger

</font-size>
- <font-color>
- <![CDATA[
#800000

</font-color>
- <font-weight>
- <![CDATA[
bold

</font-weight>
</title-panel>
- <info-panel>
<mode>disable</mode>
<image-url l10n="yes">/+CSCOU+/clear.gif</image-url>
<image-position>above</image-position>
<text l10n="yes" />
</info-panel>
- <copyright-panel>
<mode>disable</mode>
<text l10n="yes" />
</copyright-panel>
</auth-page>
- <portal>
- <title-panel>
<mode>enable</mode>
- <text l10n="yes">
- <![CDATA[
WebVPN Service

</text>
<logo-url l10n="yes">/+CSCOU+/cisco_logo.gif</logo-url>
<gradient>yes</gradient>
<style />
- <background-color>
- <![CDATA[
#ffffff

</background-color>
- <font-size>
- <![CDATA[
larger

</font-size>
- <font-color>
- <![CDATA[
#800000

</font-color>
- <font-weight>
- <![CDATA[
bold

</font-weight>
</title-panel>
<browse-network-title l10n="yes">Browse Entire Network</browse-network-title>
<access-network-title l10n="yes">Start AnyConnect</access-network-title>
- <application>
<mode>enable</mode>

```

```

<id>home</id>
<tab-title l10n="yes">Home</tab-title>
<order>1</order>
</application>
- <application>
<mode>enable</mode>
<id>web-access</id>
- <tab-title l10n="yes">
- <![CDATA[
Web Applications

</tab-title>
- <url-list-title l10n="yes">
- <![CDATA[
Web Bookmarks

</url-list-title>
<order>2</order>
</application>
- <application>
<mode>enable</mode>
<id>file-access</id>
- <tab-title l10n="yes">
- <![CDATA[
Browse Networks

</tab-title>
- <url-list-title l10n="yes">
- <![CDATA[
File Folder Bookmarks

</url-list-title>
<order>3</order>
</application>
- <application>
<mode>enable</mode>
<id>app-access</id>
- <tab-title l10n="yes">
- <![CDATA[
Application Access

</tab-title>
<order>4</order>
</application>
- <application>
<mode>enable</mode>
<id>net-access</id>
<tab-title l10n="yes">AnyConnect</tab-title>
<order>4</order>
</application>
- <application>
<mode>enable</mode>
<id>help</id>
<tab-title l10n="yes">Help</tab-title>
<order>1000000</order>
</application>
- <toolbar>
<mode>enable</mode>
<logout-prompt-text l10n="yes">Logout</logout-prompt-text>
<prompt-box-title l10n="yes">Address</prompt-box-title>
<browse-button-text l10n="yes">Browse</browse-button-text>
</toolbar>
- <column>
<width>100%</width>

```



```

<order>1</order>
</column>
- <pane>
<type>TEXT</type>
<mode>disable</mode>
<title />
<text />
<notitle />
<column />
<row />
<height />
</pane>
- <pane>
<type>IMAGE</type>
<mode>disable</mode>
<title />
<url l10n="yes" />
<notitle />
<column />
<row />
<height />
</pane>
- <pane>
<type>HTML</type>
<mode>disable</mode>
<title />
<url l10n="yes" />
<notitle />
<column />
<row />
<height />
</pane>
- <pane>
<type>RSS</type>
<mode>disable</mode>
<title />
<url l10n="yes" />
<notitle />
<column />
<row />
<height />
</pane>
- <url-lists>
<mode>group</mode>
</url-lists>
</portal>
</custom>

```

## Customize the Help

The ASA displays help content on the application panes during clientless sessions. Each clientless application pane displays its own help file content using a predetermined filename. For example, the help content displayed on the Application Access panel is from the file named app-access-hlp.inc. The following table shows the clientless application panels and predetermined filenames for the help content.

**Table 2: Clientless Applications**

Application Type	Panel	Filename
Standard	Application Access	app-access-hlp.inc

Application Type	Panel	Filename
Standard	Browse Networks	file-access-hlp.inc
Standard	AnyConnect Client	net-access-hlp.inc
Standard	Web Access	web-access-hlp.inc
Plug-in	MetaFrame Access	ica-hlp.inc
Plug-in	Terminal Servers	rdp-hlp.inc
Plug-in	Telnet/SSH Servers	ssh,telnet-hlp.inc
Plug-in	VNC Connections	vnc-hlp.inc

<sup>1</sup> This plug-in is capable of doing both sshv1 and sshv2.

You can customize the help files provided by Cisco or create help files in other languages. Then use the Import button to copy them to the flash memory of the ASA for display during subsequent clientless sessions. You can also export previously imported help content files, customize them, and reimport them to flash memory.

### Procedure

- 
- Step 1** Click **Import** to launch the Import Application Help Content dialog, where you can import new help content to flash memory for display during clientless sessions.
- Step 2** (Optional) Click **Export** to retrieve previously imported help content selected from the table.
- Step 3** (Optional) Click **Delete** to delete previously imported help content selected from the table.
- Step 4** The abbreviation of the language rendered by the browser is displayed. This field is *not* used for file translation; it indicates the language used in the file. To identify the name of a language associated with an abbreviation in the table, display the list of languages rendered by your browser. For example, a dialog window displays the languages and associated language codes when you use one of the following procedures:

- Open Internet Explorer and choose **Tools > Internet Options > Languages > Add**.
- Open Mozilla Firefox and choose **Tools > Options > Advanced > General**, click **Choose** next to Languages, and click **Select a language to add**.

The filename that the help content file was imported as is provided.

---

## Customize a Help File Provided by Cisco

To customize a help file provided by Cisco, you first require a copy of the file from the flash memory card.

### Procedure

- 
- Step 1** Use your browser to establish a clientless session with the ASA.

- Step 2** Display the help file by appending the string in “URL of Help File in Flash Memory of the Security Appliance” in the following table, to the address of the ASA, substituting *language* as described below, then press **Enter**.

**Table 3: Help Files Provided by Cisco for Clientless Applications**

Application Type	Panel	URL of Help File in Flash Memory of the Security Appliance
Standard	Application Access	/+CSCOE+/help/language/app-access-hlp.inc
Standard	Browse Networks	/+CSCOE+/help/language/file-access-hlp.inc
Standard	AnyConnect Client	/+CSCOE+/help/language/net-access-hlp.inc
Standard	Web Access	/+CSCOE+/help/language/web-access-hlp.inc
Plug-in	Terminal Servers	/+CSCOE+/help/language/rdp-hlp.inc
Plug-in	Telnet/SSH Servers	/+CSCOE+/help/language/ssh,telnet-hlp.inc
Plug-in	VNC Connections	/+CSCOE+/help/language/vnc-hlp.inc

*language* is the abbreviation for the language rendered by the browser. It is *not* used for file translation; it indicates the language used in the file. For help files provided by Cisco in English, enter the abbreviation **en**.

The following example address displays the English version of the Terminal Servers help:

**https://address\_of\_security\_appliance/+CSCOE+/help/en/rdp-hlp.inc**

- Step 3** Choose **File > Save (Page) As**.

**Note** Do not change the contents of the File name box.

- Step 4** Change the Save as type option to **Web Page, HTML only** and click **Save**.

- Step 5** Use your preferred HTML editor to customize the file.

**Note** You can use most HTML tags, but do *not* use tags that define the document and its structure (for example, do not use <html>, <title>, <body>, <head>, <h1>, <h2>, etc. You can use character tags, such as the <b> tag, and the <p>, <ol>, <ul>, and <li> tags to structure content.

- Step 6** Save the file as HTML only, using the original filename and extension. Ensure the filename does not have an extra filename extension.

### What to do next

Return to ASDM and choose **Configuration > Remote Access VPN > Clientless SSL VPN Access > Portal > Help Customization > Import** to import the modified help file into flash memory.

## Create Help Files for Languages Not Provided by Cisco

Use standard HTML to create help files in other languages. We recommend creating a separate folder for each language to support.



**Note** You can use most HTML tags, but do *not* use tags that define the document and its structure (for example, do not use <html>, <title>, <body>, <head>, <h1>, <h2>, etc. You can use character tags, such as the <b> tag, and the <p>, <ol>, <ul>, and <li> tags to structure content.

Save the file as HTML only. Use the filename in the Filename column.

Return to ASDM and choose **Configuration > Remote Access VPN > Clientless SSL VPN Access > Portal > Help Customization > Import** to import the new help file into flash memory.

## Import/Export Application Help Content

Use the Import Application Help Content dialog box to import help files to flash memory for display on the portal pages during clientless sessions. Use the Export Application Help Content dialog box to retrieve previously imported help files for subsequent editing.

### Procedure

**Step 1** The Language field specifies the language rendered by the browser but is not used for file translation. (This field is inactive in the Export Application Help Content dialog box.) Click the dots next to the Language field and double-click the row containing the language shown in the Browse Language Code dialog box. Confirm the abbreviation in the Language Code field matches the abbreviation in the row and click **OK**.

**Step 2** If the language required to provide help content is not present in the Browse Language Code dialog box, perform the following

- a) Display the list of languages and abbreviations rendered by your browser.
- b) Enter the abbreviation for the language in the Language Code field and click **OK**.

OR

You can also enter it into the Language text box to the left of the dots.

A dialog box displays the languages and associated language codes when you use one of the following procedures:

- Open Internet Explorer and choose **Tools > Internet Options > Languages > Add**.
- Open Mozilla Firefox and choose **Tools > Options > Advanced > General**, click **Choose** next to Languages, and click **Select a language to add**.

**Step 3** If you are importing, choose the new help content file from the File Name drop-down list. If you are exporting, this field is unavailable.

**Step 4** Configure the parameters for the source file (if importing) or destination file (if exporting):

- Local computer—Indicate if the source or destination file is on a local computer:
  - Path—Identify the path of the source or destination file.
  - Browse Local Files—Click to browse the local computer for the source or destination file.
- Flash file system—Indicate if the source or destination file is located in flash memory on the ASA:
  - Path—Identify the path of the source or destination file in flash memory.

- Browse Flash—Click to browse the flash memory for the source or destination file.
- Remote server—Indicate if the source or destination file is on a remote server:
  - Path—Choose the file transfer (copy) method, either ftp, tftp, or http (for importing only), and specify the path.

## Customize Bookmark Help

The ASA displays help content on the application panels for each selected bookmark. You can customize those help files or create help files in other languages. You then import them to flash memory for display during subsequent sessions. You can also retrieve previously imported help content files, modify them, and reimport them to flash memory.

Each application panel displays its own help file content using a predetermined filename. The prospective location of each is in the `/+CSCOE+/help/language/` URL within flash memory of the ASA. The following table shows the details about each of the help files you can maintain for VPN sessions.

**Table 4: VPN Application Help Files**

Application Type	Panel	URL of Help File in Flash Memory of the Security Appliance	Help File Provided By Cisco in English?
Standard	Application Access	<code>#CSCOE+/help/language/aaa/ssh/help.html</code>	Yes
Standard	Browse Networks	<code>#CSCOE+/help/language/flash/help.html</code>	Yes
Standard	AnyConnect Client	<code>#CSCOE+/help/language/ta/ssh/help.html</code>	Yes
Standard	Web Access	<code>#CSCOE+/help/language/web/ssh/help.html</code>	Yes
Plug-in	MetaFrame Access	<code>#CSCOE+/help/language/c/ssh/help.html</code>	No
Plug-in	Terminal Servers	<code>#CSCOE+/help/language/t/ssh/help.html</code>	Yes
Plug-in	Telnet/SSH Servers	<code>#CSCOE+/help/language/s/ssh/help.html</code>	Yes
Plug-in	VNC Connections	<code>#CSCOE+/help/language/v/ssh/help.html</code>	Yes

*language* is the abbreviation of the language rendered by the browser. This field is *not* used for file translation; it indicates the language used in the file. To specify a particular language code, copy the language abbreviation from the list of languages rendered by your browser. For example, a dialog window displays the languages and associated language codes when you use one of the following procedures:

- Open Internet Explorer and choose **Tools > Internet Options > Languages > Add**.
- Open Mozilla Firefox and choose **Tools > Options > Advanced > General**, click **Choose** next to Languages, and click **Select a language to add**.

## Understand Language Translation

The ASA provides language translation for the entire Clientless SSL VPN session. This includes login, logout banners, and portal pages displayed after authentication such as plugins and AnyConnect. Functional areas and their messages that are visible to remote users are organized into translation domains. The following table shows the translation domains and the functional areas translated.

Language Translation Domain Options

Translation Domain	Functional Areas Translated
AnyConnect	Messages displayed on the user interface of the Cisco AnyConnect VPN client.
banners	Message displayed when VPN access is denied for a clientless connection.
CSD	Messages for the Cisco Secure Desktop (CSD).
customization	Messages on the logon and logout pages, portal page, and all the messages customizable by the user.
plugin-ica	Messages for the Citrix plug-in.
plugin-rdp	Messages for the Remote Desktop Protocol plug-in.
plugin-rdp2	Messages for the Java Remote Desktop Protocol plug-in.
plugin-telnet,ssh	Messages for the Telnet and SSH plug-in.
plugin-vnc	Messages for the VNC plug-in.
PortForwarder	Messages displayed to Port Forwarding users.
url-list	Text that user specifies for URL bookmarks on the portal page.
webvpn	All the layer 7, AAA and portal messages that are not customizable.

The ASA includes a translation table template for each domain that is part of standard functionality. The templates for plug-ins are included with the plug-ins and define their own translation domains.

You can export the template for a translation domain, which creates an XML file of the template at the URL you provide. The message fields in this file are empty. You can edit the messages and import the template to create a new translation table object that resides in flash memory.

You can also export an existing translation table. The XML file created displays the messages you edited previously. Reimporting this XML file with the same language name creates a new version of the translation table object, overwriting previous messages.

Some templates are static, but some change based on the configuration of the ASA. Because you can customize the logon and logout pages, portal page, and URL bookmarks for clientless users, the **ASA generates the customization and url-list** translation domain templates dynamically, and the template automatically reflects your changes to these functional areas.

After creating translation tables, they are available to customization objects that you create and apply to group policies or user attributes. With the exception of the AnyConnect translation domain, a translation table has no affect, and messages are not translated on user screens until you create a customization object, identify a translation table to use in that object, and specify that customization for the group policy or user. Changes to the translation table for the AnyConnect domain are immediately visible to AnyConnect client users.

## Edit a Translation Table

### Procedure

---

- Step 1** Navigate to Configuration > Remote Access VPN > Language Localization. When the Language Localization pane displays, click **Add**.
- Step 2** Choose a Language Localization Template from the drop-down box. The entries in the box correspond to functional areas that are translated.
- Step 3** Specify a language for the template. The template becomes a translation table in cache memory with the name you specify. Use an abbreviation that is compatible with the language options for your browser. For example, if you are creating a table for the Chinese language, and you are using IE, use the abbreviation *zh*, that is recognized by IE.
- Step 4** Edit the translation table. For each message represented by the msgid field to translate, enter the translated text between the quotes of the associated msgstr field. The example below shows the message Connected, with the Spanish text in the msgstr field:

```
msgid "Connected"
msgstr "Conectado"
```

- Step 5** Click **OK**.
- 

## Add a Translation Table

You can add a new translation table, based on a template, or you can modify an already-imported translation table in this pane.

### Procedure

---

- Step 1** Select a template to modify and use as a basis for a new translation table. The templates are organized into translation domains and affect certain areas of functionality.
- Step 2** Select the translation domain from the drop-down.
- Step 3** Specify a language. Use an abbreviation that is compatible with the language options of your browser. The ASA creates the new translation table with this name.
- Step 4** Use the editor to change the message translations. The message ID field (msgid) contains the default translation. The message string field (msgstr) that follows msgid provides the translation. To create a translation, enter the translated text between the quotes of the msgstr string. For example, to translate the message “Connected” with a Spanish translation, insert the Spanish text between the msgstr quotes:

```
msgid "Connected"
msgstr "Conectado"
```

After making changes, click **Apply** to import the translation table.

---