



CHAPTER 2

Creating and Analyzing Networks

A project consists of a single network or multiple networks that you analyze and compare. In a project, you can have multiple copies of a single network with the same customer input data, but use different options in each to investigate multiple solutions.

2.1 Creating a Project

Use the following procedure to create a single network in a project. A new network is in the Design state. For more information about the different network states, see the [“2.10 Managing the Network Design” section on page 2-46](#).



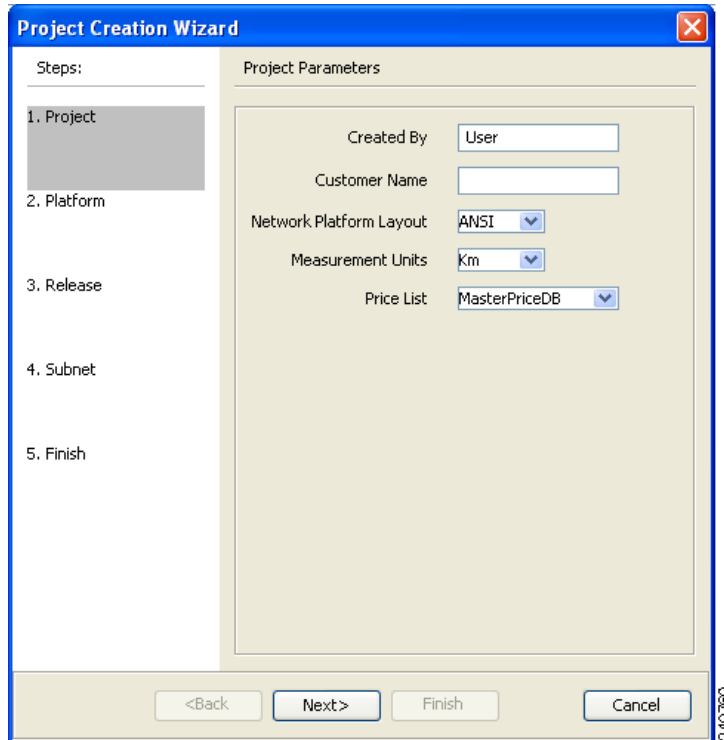
Note

All options set by the Project Creation Wizard can be changed as needed, except Measurement Units and ANSI/ETSI, which can be changed.

Step 1

From the File menu, choose **New**. The Project Creation Wizard appears ([Figure 2-1](#)).

Figure 2-1 Project Creation Wizard



Step 2 In the Project Parameters area complete the following:

- Created By—Enter a user name. You can enter a maximum of 128 character.
- Customer Name—Enter the name of the customer requiring this network design. You can enter a maximum of 128 character.
- Network Platform Layout—Choose **ANSI** (the North American standard) or **ETSI** (the international standard) from the drop-down list to indicate the platform type. ANSI networks will not allow you to define SDH (ETSI) service demands. ETSI networks will not allow you to define SONET (ANSI) service demands.
- Span Measurement Units—Choose **Km** (kilometers) or **Miles** from the drop-down list to set the unit of measure used for span length.
- Price List—Choose a price list from the drop-down list.

Step 3 Click **Next**.

The Choose Platform area appears.

Step 4 In the Choose Platform area, check the desired platform and click **Next**.

The Choose Release area appears.

Step 5 In the Choose Release area, check the desired software release for the network design and click **Next**.

The Subnet Options area appears.

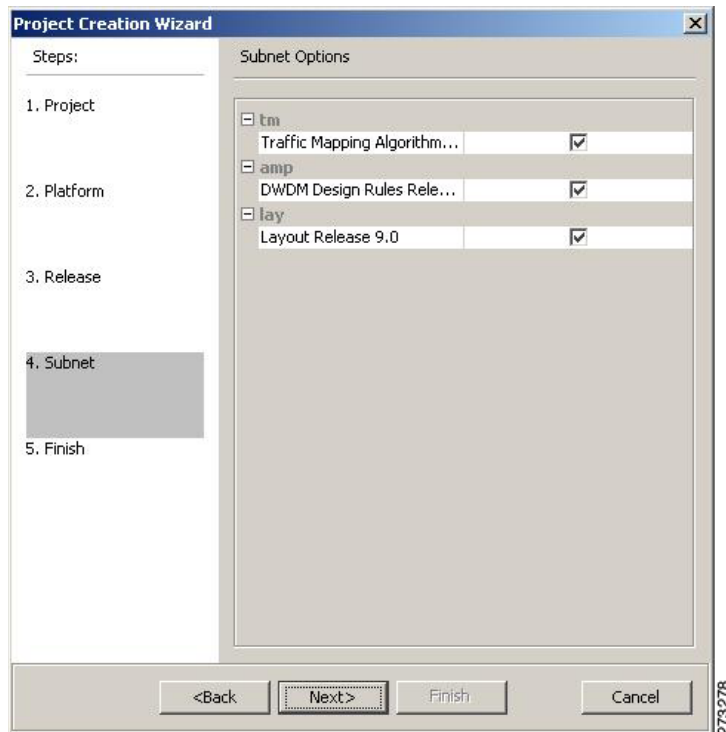
To set a default software release see [“1.5.2 Setting the Default Software Release”](#) section on page 1-19.

Step 6 In the Subnet Options area, complete the following.

- Traffic Mapping Algorithm Release 9.0—Check to select the ONS 15454 Software R9.0 version of the interface and the wavelength routing optimization algorithm to be used in the network design. Software R9.0 is backward compatible and can manage Software Releases 4.7, 5.0, 7.0, and 8.5.
- Design Rules Release 9.0—Check to select DWDM Design Rules Release 9.0.

- Layout Release 9.0—Check to define the ONS 15454 Software R9.0 version of the algorithm used to generate the layout of each site within the subnetwork. Software R9.0 is backward compatible and can manage Software Releases 4.7, 5.0, 7.0, and 8.5.

Figure 2-2 Project Creation Wizard Subnet Page



Step 7 Click **Next**.

Step 8 Complete one of the following:

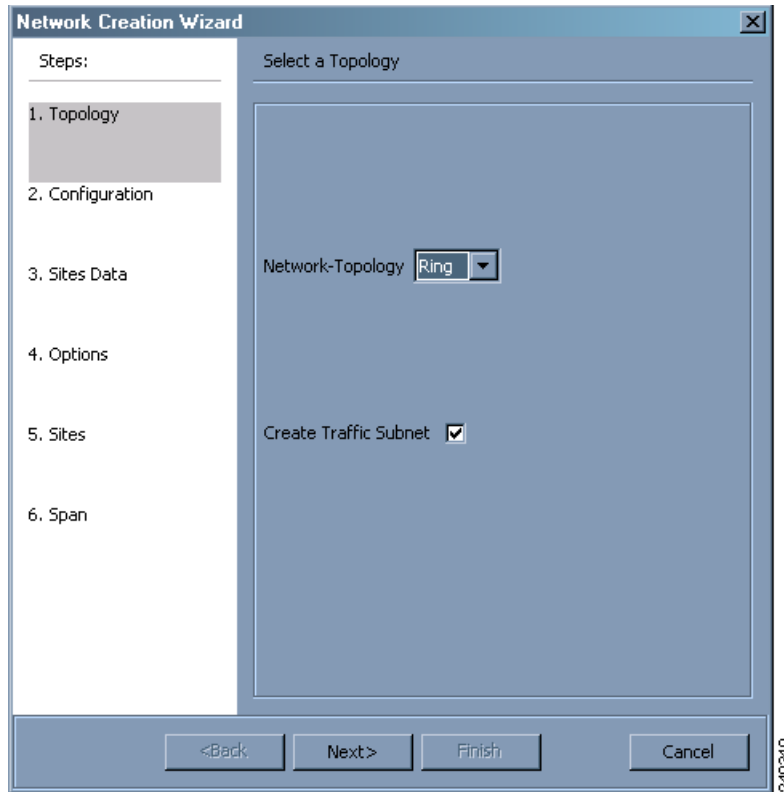
- To run the Network Creation wizard, check the **Run the Network Wizard Now** check box and click **Finish**. Continue with [Step 9](#).
- To create an empty project to add sites and fibers manually, uncheck the **Run the Network Wizard Now** check box and click **Finish**. Project Creation wizard creates the project and an empty network and subnetwork under which you can manually add sites and fibers. Skip the remaining steps in this procedure. To add sites manually, see the “[2.2 Adding Sites](#)” section on page 2-11.

Step 9 In the Topology area of the Network Creation wizard ([Figure 2-3](#)), choose any one of the following options from the Network-Topology drop-down list:

- Ring
- Linear
- PSM Line
- PSM Section

Step 10 To instruct Cisco Transport Planner to automatically create a traffic subnet associated with the created network, check the Create Traffic Subnet check box. Cisco Transport Planner creates (in addition to the Traffic_ALL), an additional traffic subnet (Traffic_Ring or Traffic_Linear), depending on the topology value you specify in the Network Creation wizard.

Figure 2-3 Network Creation Wizard Topology Page

**Step 11** Click Next.

The Configuration page appears.

Step 12 Enter the number of sites in the field/s displayed depending on the network topology selected in [Step 9](#). The following options are available:

Network topology	Fields to be entered...	Maximum, Minimum, and Default Number of Sites
Ring or Linear	Number of Sites	Maximum: 100 Minimum: 2 Default: 3
PSM Line	<ul style="list-style-type: none"> Intermediate Sites on Working path Intermediate Sites on Protected path 	Both for working and protected paths: Maximum: 60 Minimum: 0 Default: 0
PSM Section	<ul style="list-style-type: none"> Intermediate Sites on Working path Intermediate Sites on Protected path 	Both for working and protected paths: Maximum: 60 Minimum: 0 Default: 1

The maximum number of locations where the optical service channel (OSC) can be terminated in a network is 40. The maximum number of Add/Drop locations (equipped with WSS, WXC, multiplexer/demultiplexer, or OADM cards) traversed by an optical circuit is limited to 40.

Step 13 On the Site Name and Topology area, choose the topology for each site from the drop-down list. See [Figure 2-4](#). Available options are:

- Line—Site with two sides facing two fiber span. The default site value for ring topology is Line.
- Terminal—Site with one side facing one fiber span.
- Line + —Site with two sides facing two fiber spans that can provide multi-degree expansion capability through an MMU unit.
- Terminal +—Site with one side facing one fiber span that can provide multi-degree expansion capability through an MMU unit. Terminal+ is not allowed for ring network topology or for linear network topology intermediate sites.
- Multi-degree—Nodes have more than two sides and face more than two fibre spans.
- PSM Terminal - Optical Path Protection—Provides protection for terminal sites at Line level through an optical protection switching module (PSM). In this configuration, the PSM is directly connected to the fibers after the amplification stage.
- PSM Terminal - Multiplex Section Protection—Provides protection for terminal sites at Multiplex level through an optical protection switching module (PSM). In this configuration the PSM is equipped between Mux/Dmx stage and the amplification stage.

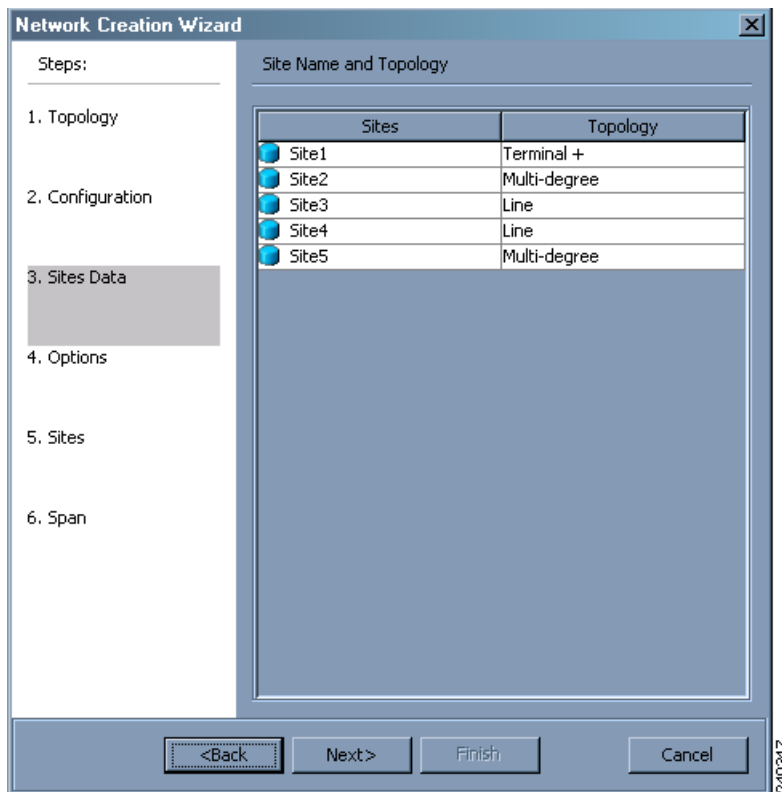
The site topology options displayed depend upon the restrictions listed in the following table. See [Table 2-1](#).

Table 2-1 Site Topology Restrictions

If the Network Topology is...	then...
Ring	You cannot choose the following options: <ul style="list-style-type: none"> • Terminal • Terminal+ • PSM Terminal - Optical Path Protection • PSM Terminal - Multiplex Section Protection
Linear	You cannot choose the following options: <ul style="list-style-type: none"> • Terminal for the intermediate sites • Terminal+ for the intermediate sites • PSM Terminal - Optical Path Protection • PSM Terminal - Multiplex Section Protection

Table 2-1 Site Topology Restrictions

If the Network Topology is...	then...
PSM Line	<p>You cannot set any topology for the sites. CTP automatically sets the site topology as follows:</p> <ul style="list-style-type: none"> PSM Terminal - Optical Path Protection for the two PSM sites Line for the intermediate sites
PSM Section	<p>You cannot set any topology for the sites. CTP automatically sets the site topology as follows:</p> <ul style="list-style-type: none"> PSM Terminal - Optical Path Protection for the two PSM sites Line for the intermediate sites

Figure 2-4 Network Creation Wizard- Site Data Page

Step 14 Click **Next**
The Options area appears.

Step 15 The Options area allows you to define C band and L band rules for the network design [Figure 2-5](#). In the Options area complete the following:

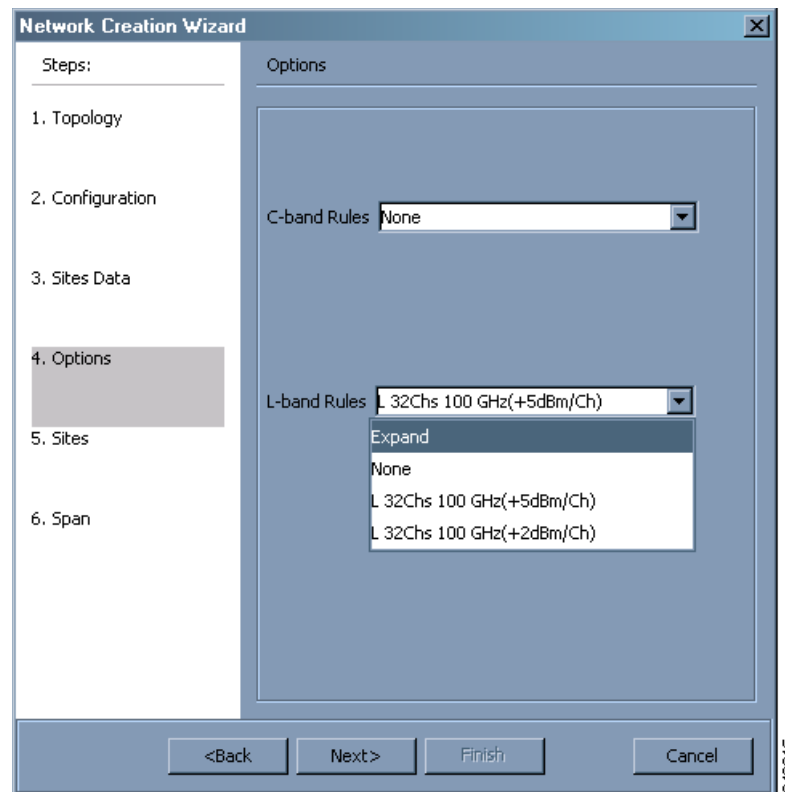
- C-band rules—The C-band options appear in the following format: 80Ch. 50Ghz +1dBm. The channels available are 80, 72, 64, 40, 32, 20, 16, or 8; the reference per channel power options available are -1 dBm, +1 dBm, 2 dBm, -2dBm, +4dBm, 5 dBm, 7dBm and 8 dBm; and the spacing options available are 100GHz or 50GHz.

- L-band Rules— The L-band options appear in the following format: 32 Ch. 100GHz +5dBm. The options available are: None, Expand, and channels available are 32; the reference per channel power available are 2 dBm and 5 dBm; and, the spacing options available is 100GHz.

**Note**

If you use a Line+ or Multi-Degree site, you must select design rules based on 100 GHz channel spacing, and in the case of Line+, you must also select 32-channel rules. If these conditions are not met, Cisco Transport Planner will provide an error message when you attempt to analyze the network. See [Table 4-1](#) for additional details on site design rules.

Figure 2-5 Network Creation Wizard Options Page

**Step 16** Click **Next**

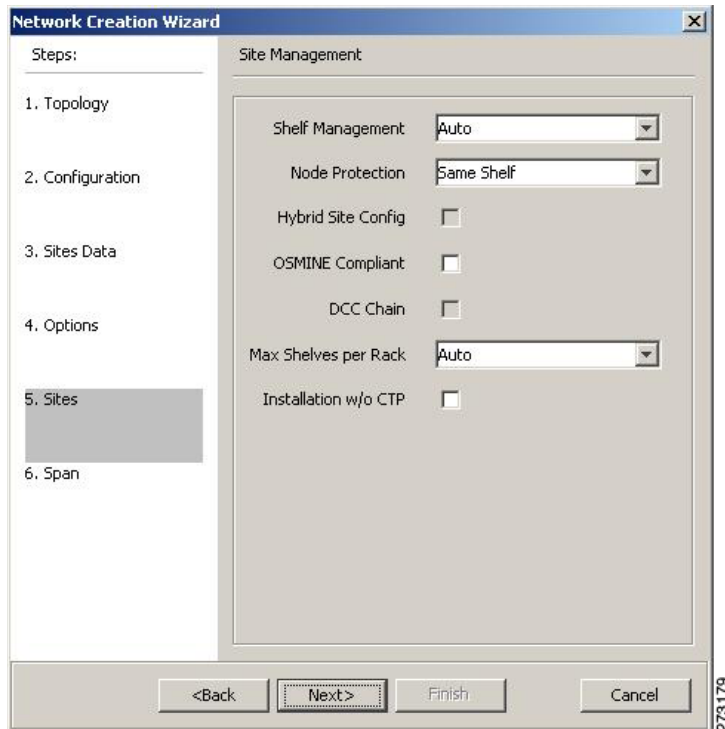
The Site Management area appears.

Step 17 In the Site Management area, complete the following. See [Figure 2-6](#).

- Shelf Management—Choose the shelf management configuration:
 - Multi Shelf Integrated Switch—All the Multi Service Transport Platform (MSTP) optical cards (optical add/drop multiplexers [OADMs] and amplifiers) reside in different shelves connected by a LAN. The LAN is implemented with switches connected to the MSTP shelves. For this option, Multi-Shelf Integrated Switch Cards (MS-ISC) are used to support the multishelf configuration.
 - Multi Shelf External Switch—All the MSTP optical cards (OADMs and amplifiers) reside in different shelves connected by a LAN. The LAN is implemented with switches external to the MSTP shelves (Cisco Catalyst 2950). For this option, two external Ethernet switch units are used to support the multishelf configuration.

- Individual Shelf—All the MSTP optical cards (OADMs and amplifiers) reside in the same shelf. For this option, multishelf management is not supported; every shelf is managed as an independent shelf.
- Node Protection—Choose **Same Shelf** (single shelf configurations) or **Separated Shelves** (multishelf configurations). Same Shelf configuration places all the OADM/ROADM units in a single shelf, and does not provide any protection at the shelf level in the node. Separated Shelves places OADM/ROADM units (west-facing and east-facing) in separate shelves in the node and it is selectable only if Multishelf management is selected. You can also set node protection for a multi-degree node.
- Hybrid Site Config—Check to create all the nodes configured as hybrid MSTP/Multi Service Provisioning Platform (MSPP) nodes. Hybrid Node is only available if you chose Individual Shelf as the Shelf Management type.
- OSMINE Compliant—Check this option to place the DWDM units in the shelves according to Operations Systems Modifications for Integration of Network Elements (OSMINE) placement rules.
- DCC Chain—Check to put a TXP(P)_MR_2.5G card in Slot 12 on each shelf of each site to use DCC.
- Max Shelves per Rack—Choose the maximum number (from 1 to 4) of ANSI or ETSI shelves (equipping optical cards or TXP/MXP cards) that can be placed in each rack in the site when generating the layout of the site.
- Installation w/o M/P—Check this box to design a network that does not require the setup of configuration files (thresholds and setpoints). Installation without Cisco Transport Planner is also known as automatic node turn up. When this feature is enabled, the software in the node will configure itself with parameters; XML configuration files are not required to configure the node. When this option is selected at the end of EDFA and DCU placement, Cisco Transport Planner will analyze the resulting network and verify that in each node, where the option “installation w/o Cisco Transport Planner” is enabled, has:
 - A preamplifier in each direction.
 - All amplifiers working in gain control mode
 - A flat node output spectrum; that is, the resulting channel tilt at the exit of the node is 0
 - A feasible setpoint forced during simulation.

Figure 2-6 Network Creation Wizard Sites Page



Step 18 Click **Next**.

The Span Parameters area appears.

Step 19 In the Span Parameters area, complete the following. See [Figure 2-7](#).

- Span Label Tag—Enter the desired span label.
- Span Fibre Type—Choose the fiber type for each span in the network.
- Span Length—Enter the span length. The displayed unit of measure is retrieved from the Span Measurements Units field.
- EOL Ageing Factor—Type the number to use when factoring fiber aging. This factor is multiplied by the SOL total span loss without connectors.
- EOL Ageing loss [dB]—Type the EOL aging loss value. The EOL loss-per-span value is added at the end of life to each discrete fiber in the network (for example, to add an EOL margin for splicing).



Note Enter a value in either EOL Ageing Factor or EOL Ageing loss; you do not need to enter a value in both fields. Use one of the following formulas to calculate the fiber loss at SOL:

$$\text{SOL} = \text{km} * \text{dB/km} + (2 * \text{connector loss})$$

$$\text{SOL} = \text{user entered loss} + (2 * \text{connector loss})$$

Use one of the following formulas to calculate the fiber loss at EOL:

$$\text{EOL} = \text{km} * \text{dB/km} * \text{EOL Aging Factor} + (2 * \text{connector loss}) + \text{EOL Aging Loss}$$

$$\text{EOL} = \text{user entered loss} * \text{EOL Aging Factor} + (2 * \text{connector loss}) + \text{EOL Aging Loss}$$

- Connector loss [dB]—Type the concentrated loss at the end of the span.

- CD factor [ps/nm/km]—Type the fiber chromatic dispersion (CD) factor. The default value is dependent on the selected fiber type. Any value that you enter in this field is lost whenever you change the fiber type. Chromatic dispersion is always entered in ps/nm/km. Fiber chromatic dispersion is defined for the middle of the wavelength band. C-band is defined at 1545.3 nm; L-band is defined at 1590.4 nm.
- PMD factor [ps/sqrt(km)]—Type the polarization mode dispersion (PMD) factor. The default value is dependent on the selected fiber type. Any value that you enter in this field is lost whenever you change the fiber type. PMD is always entered per kilometers.
- Length Based Loss—If checked, the fiber loss is determined by Span Length * Loss Factor. If the check box is not checked, you must enter the total loss of the span.
- Loss factor [dB/km]—Type the value of the SOL fiber loss per kilometer that is used to calculate the loss of each span in the network. The fiber loss factor is always entered in dB/km.
- Tot SOL loss w/o conn [dB]—Type the start of life link fiber loss for each span, without the connector concentrated loss. The total SOL loss without connectors is equal to the loss factor multiplied by the length. In the Length Based model, this value is calculated automatically.
- DCN extension—Click the check box to use DCN extensions on each of the spans in the network. This implies that the OSC channel is not used to connect the two nodes. All nodes facing a span with the DCN Extension option enabled require a ITU-T G.709 generic communications channel (GCC) access that must be provided by the customer.

Figure 2-7 Network Creation Wizard Span Page

The screenshot shows the 'Network Creation Wizard' dialog box, specifically the 'Span Parameters' page. The 'Steps' pane on the left indicates that the user is at step 6, 'Span'. The 'Span Parameters' pane contains the following fields and values:

Parameter	Value
Span Label Tag	Duct
Span Fibre Type	Tera-Light
Span Length [Km]	1.0
EOL Ageing Factor	1.0
EOL Ageing Loss [dB]	0.0
Connector Loss [dB]	0.0
CD Factor [ps/nm/km]	7.76
PMD Factor [ps/sqrt(km)]	0.1
Length Based Loss	<input checked="" type="checkbox"/>
Loss Factor [dB/km]	0.25
Tot SOL Loss w/o Conn [dB]	1.0
DCN Extension	<input type="checkbox"/>

At the bottom of the dialog box, there are four buttons: '<Back', 'Next>', 'Finish', and 'Cancel'. A small vertical number '240367' is visible on the right side of the dialog box.

- Step 20** Click **Finish**. CTP checks the validity of the fiber factor values. If the fiber factor values are within the valid range (Table 2-2), CTP creates a visual representation of the network. If the values are out of range, CTP issues a warning, asking you to confirm the input values.

**Note**

All options set by the Network Creation Wizard can be changed as needed per site and per span.

Table 2-2 Valid Ranges for Fiber Factor Values

Fiber Type	Parameter	Min. Error Value	Min. Warning Value	Default Value	Max. Warning Value	Max. Error Value	Unit
ITU-T G.652-SMF	Loss factor	0	0.2	—	0.4	10	dB/km
	Chromatic dispersion factor at 1545.3 nm (C-band)	0	16.2	16.7	17.1	30	ps/nm/km
	Chromatic dispersion factor at 1590.4 nm (L-band)	0	18.53	19.03	19.43	30	ps/nm/km
	PMD factor	0	0.0	0.1	0.5	10	ps/(√km)
ITU-T G.655-E-LEAF	Loss factor	0	0.2	—	0.4	10	dB/km
	Chromatic dispersion factor at 1545.3 nm	0	3.4	3.80	4.2	10	ps/nm/km
	PMD factor	0	0	0.1	0.5	10	ps/(√km)
ITU-T G.655-True Wave	Loss factor	0	0.2	—	0.4	10	dB/km
	Chromatic dispersion factor at 1545.3 nm	0	3.8	4.19	4.6	10	ps/nm/km
	PMD factor	0	0	0.1	0.5	10	ps/(√km)
ITU-T G.652-DS (Dispersion shifted)	Loss factor	0	0.2	—	0.4	10	dB/km
	Chromatic dispersion factor at 1590.4 nm (L-band)	0	2.43	2.83	3.23	30	ps/nm/km
	PMD factor	0	0	0.1	0.5	10	ps/(√km)

2.2 Adding Sites

Use the following procedure to add new sites to an existing network. A site is a customer premise location where any equipment can be co-located in a rack within a building. Cisco Transport Planner supports up to 100 sites in a network. The number of racks and nodes in a site is independent of number of number of sites in the network. The maximum number of locations where the OSC can be terminated in a network is 40. When the number of locations where the OSC is terminated exceeds the maximum supported value, the tool completes the design, but in the summary report there will be an alarm to indicate

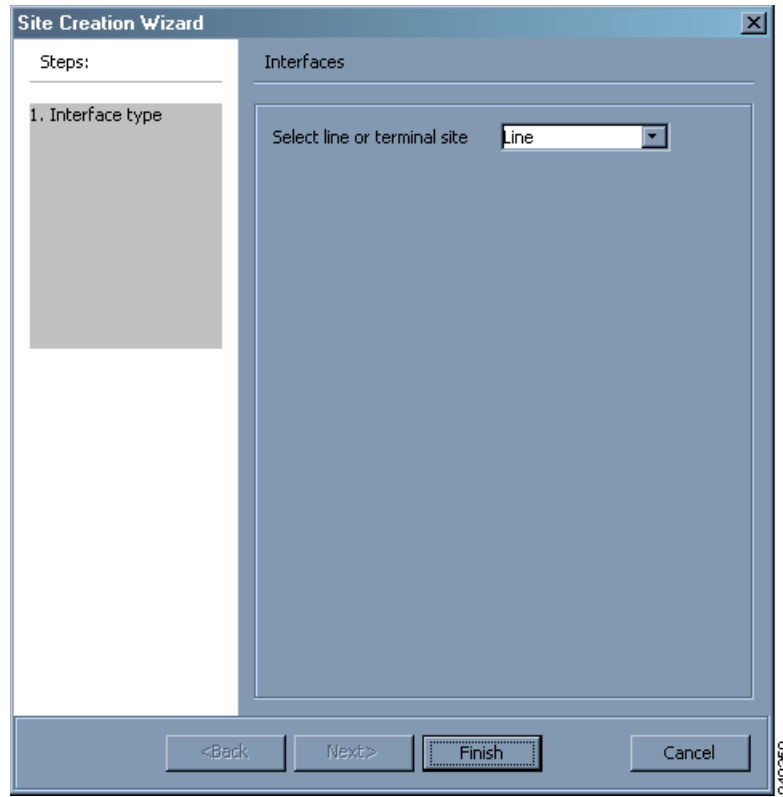
this situation. The maximum number of add/drop locations in a network is 40. The maximum number of Add/Drop locations (equipped with WSS, WXC, multiplexer/demultiplexer, or OADM) traversed by an optical circuit is limited to 40.

**Note**

Every new site added to a design is automatically configured as Multi-Shelf Integrated Switch with Same Shelf protection. To change this, you can edit the site properties after adding it to the network design. See the “[4.3 Editing Site Parameters](#)” section on page 4-2.

-
- Step 1** Right-click the network folder in the Project Explorer and choose **Expand** from the shortcut menu.
- Step 2** Right-click the Sites folder and choose **New Site** from the shortcut menu. The Site Creation wizard appears ([Figure 2-8](#)). As an alternative, if sites already exist in the network design and you have the NtView *Name* tab open, click the **Create a new site** icon in the toolbar. For more information about the Cisco Transport Planner icons, see [Appendix A, “GUI Information and Shortcuts.”](#)
- Step 3** Choose the interface type:
- Line—Two pairs of fibers are terminated at the node.
 - Terminal—A single pair of fibers is terminated at the node.
 - Line+—Two pairs of fibers are terminated at the node but the number of fibers can be increased. An MMU card (topology upgrade) must be installed.
 - Terminal+—A single pair of fibers is terminated at the node but the number of fibers can be increased. An MMU card (topology upgrade) must be installed.
 - Multi-degree—Nodes have more than two sides and face more than two fibre spans.
 - PSM Terminal - Optical Path Protection—Provides protection for terminal sites at Line level through an optical protection switching module (PSM). In this configuration, the PSM is directly connected to the fibers after the amplification stage.
 - PSM Terminal- Multiplex Section Protection—Provides protection for terminal sites at Multiplex level through an optical protection switching module (PSM). In this configuration the PSM is equipped between Mux/Dmx stage and the amplification stage.
- Step 4** Click **Finish**.

Figure 2-8 Site Creation Wizard



2.3 Adding Fiber Spans

Use the following procedure to manually add fiber spans between sites. A fiber span consists of a pair of fibers (one transmit and one receive) between two sites. A span is represented by a fiber duct in the *NetViewName* tab. Within a fiber duct, more than one fiber pair can exist.



Note

The number of fiber spans that each site can support is defined in the site properties. See the [“2.2 Adding Sites”](#) section on page 2-11 or the [“4.3 Editing Site Parameters”](#) section on page 4-2.

- Step 1** In the *NtView Name* tab, click the Create a new duct icon in the toolbar. For more information about the Cisco Transport Planner icons, see [Appendix A, “GUI Information and Shortcuts.”](#)
- Step 2** Click one of the sites that you want to connect with a fiber span. This site will be the source site for later network analysis output.
- Step 3** Click the destination site. A fiber span appears between the two sites. This site will be the destination site for later network analysis output.

For the first span, the source site is set as A and the destination site is set as B. Cisco Transport Planner automatically adjusts East and West for additional spans.

2.4 Creating an Optical Subnet

An optical subnet is a collection of spans with certain associated, defined, common properties. You can define distinct optical subnets on the same network and can also set a list of associated properties on each of them.

The following properties are supported in an optical subnet:

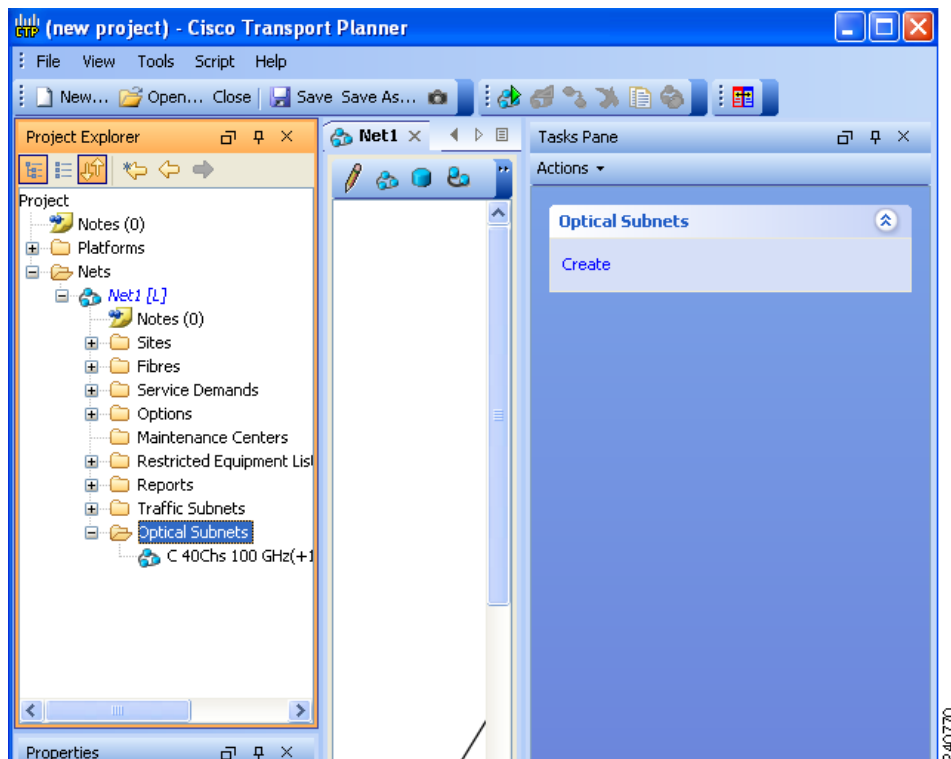
- C-band Rules—Allows you to define rules for the C-band channels, the maximum per channel power, and the channel spacing for the design.
- L-band Rules—Allows you to define, for the L-band channels, the maximum per channel power, and the channel spacing for the design.

When you create a new project (see the “2.1 Creating a Project” section on page 2-1), Cisco Transport Planner automatically creates an optical subnet associated to the network. At least one optical subnet (even if empty) must exist for each network in a project.

You can create an optical subnet using the Project Options (default) Optical Subnet property (Design Rules) values. To do this:

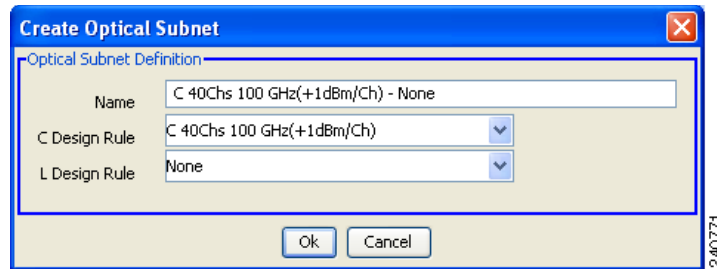
- Step 1** Select the **Optical Subnet** folder in Project Explorer. The Optical Subnet Pane appears in the Task Pane on the right side of the screen (Figure 2-9).

Figure 2-9 Creating Optical Subnet



- Step 2** Click **Create**. The **Create Optical Subnet** dialog box appears (Figure 2-10). The default name, which is a combination of the user-created C-band and L-band rules, and the wizard-created default C-band and L-band rules are displayed.

Figure 2-10 Create Optical Subnet Dialog Box



- Step 3** Select C-band and L-band design rules from the C Design Rule and L Design Rule drop-down lists for the new optical subnet that you want to create.
- Step 4** Click **OK**. A new optical subnet with the design properties you selected is created and placed in project explorer under the Optical Subnets folder.

**Note**

You cannot create more than one optical subnet with the same properties values and each span must be part of only one optical subnet.

Cisco Transport Planner allows you to modify, edit, define an optical subnet as current, and to delete an optical network. To do these, select the optical subnet you want to change in Project Explorer and choose the appropriate Modify, Edit, Set as Current, or Delete options under **Optical Subnets** in the Tasks Pane.

**Note**

When you delete an optical subnet, all the spans contained in the deleted optical subnet are placed within the current optical subnet. In case the current optical subnet is deleted, all their spans will be automatically placed within the optical subnet with the greatest number of spans. When the current optical subnet is removed, the tool automatically defines as current the optical subnet with the greatest number of contained spans.

2.5 Adding Notes to a Project

Use the following procedure to add a note to any item in the Project Explorer. Each network has a Notes folder in the Project Explorer. After you have created a note, it appears in the Notes folder for that particular network.

- Step 1** Right-click the desired item in the Project Explorer and choose **Edit Note** from the shortcut menu.
- Step 2** In the Edit Note creation box, enter the desired text.
- Step 3** To close the Edit Note creation box and to save the note, click the **X** in the upper right corner of the window.
- Step 4** To view notes, double-click the **Notes** folder. The Notes window appears. [Table 2-3](#) lists the columns in the Notes window.

Table 2-3 Notes Window

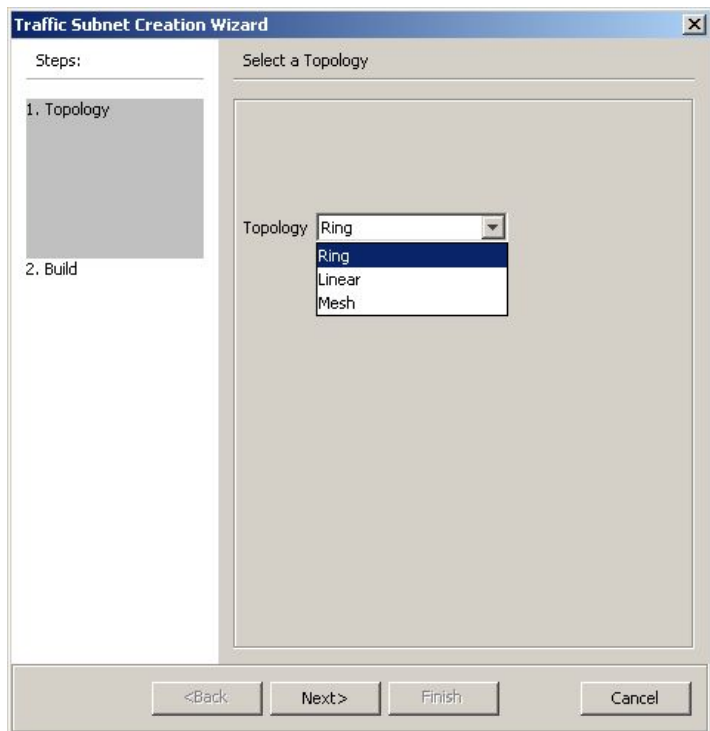
Column	Description
Header	Displays the note text. To view the entire note, click the plus (+) sign next to the header to expand the text.
Action	Click Go to open the item in the Project Explorer where the note was created.
Source	Displays the location of the note, for example, ProjectManager.Nets.Net2.Sites.Site2.W.

Step 5 To close the Notes window, click the **X** in the upper right corner of the window.

2.6 Creating Traffic Subnet

Step 1 In the Project Explorer tab, scroll down to Traffic Subnets. Right-click Traffic Subnets, and select **Create**.

The Traffic Subnet Creation wizard appears. See [Figure 2-11](#).

Figure 2-11 Traffic Subnet Creation Wizard

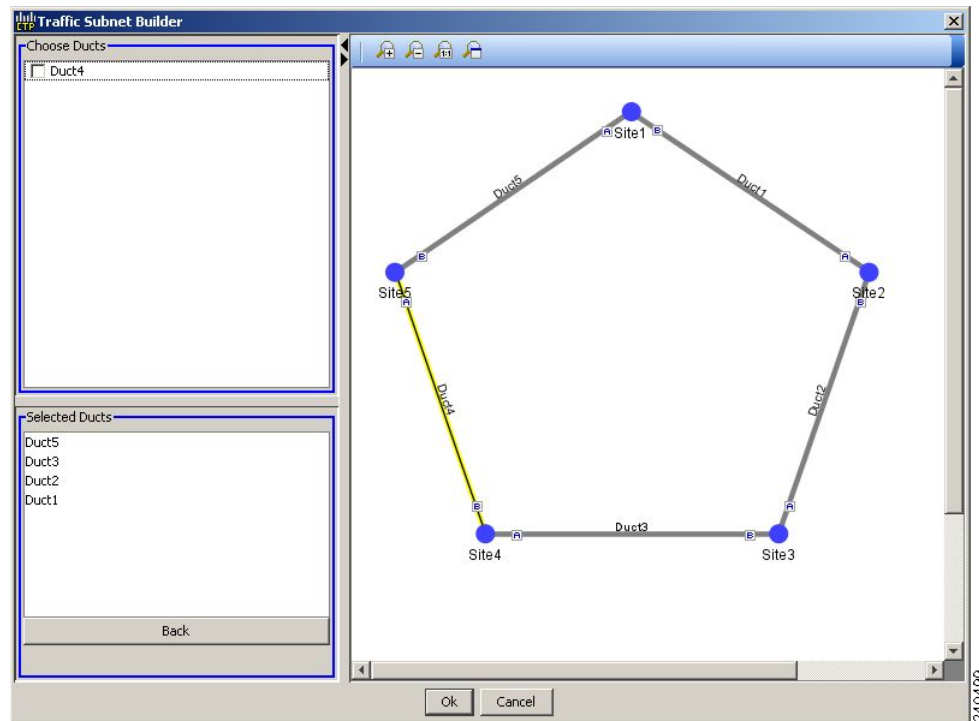
Step 2 Select the Topology for the subnet from the drop-down list (**Ring**, **Linear**, and **Mesh**), then click **Next**.

**Note**

If Ring or Linear topology is selected for the subnet, the spans in the subnet must be adjacent and also ordered.

- Step 3** Click Press to build new subnet. The Traffic Subnet Builder Wizard appears (Figure 2-12).
- Step 4** Select the ducts that should be a part of the subnet from the list displayed on the left handside, and click **OK**. This takes you back to the Traffic Subnet Creation Wizard.
- Step 5** Click **Finish** to complete the creation of the traffic subnet. The created subnet appears in Project Explorer under Traffic Subnets.

Figure 2-12 Traffic Subnet Builder Wizard



2.7 Creating a Demand

You can create five types of service demands using the following procedures. You can create regeneration sites while creating a service demand. Cisco Transport Planner 9.0 provides support for the OTU2_XP card, PSM card, GE_XPE and 10GE_XPE cards, ADM-10G card and the OPT-RAMP-C amplifier.

2.7.1 Types of Demands

Cisco Transport Planner provides five types of service demands:

- Point-to-point

- Protected ring (P-ring)
- ROADM
- Ethernet aggregated
- TDM aggregated

2.7.2 Manual Regeneration

In optical networks, as the fiber length increases, a loss in the signal ratio and power could occur due to attenuation and dispersion. A regenerator is required to recreate the weak and distorted optical signals through reamplification, regeneration, and retiming processes. The regenerators remove noise and distortion, convert the optical signal to an electrical signal, and then convert the signals back to optical signals (O-E-O conversion).

Cisco Transport Planner 9.0 supports the creation of regeneration sites in the network. Regeneration is supported for the following demands:

- Point-to-point
- P-ring
- Ethernet Aggregated
- TDM Aggregated

The demand is displayed in the following manner:

Demand > Service > Trail > Section

- “Service” is the circuit through which traffic flows between nodes.
- “Trail” is the network section joining two traffic nodes. By default, a trail has only one single section. The trail can be split in different regeneration sections.
- “Section” is a contiguous subset of the span.

A new section is added whenever a regeneration site is created. The sections can have different wavelengths based on availability. Regeneration can be performed using two cards back-to-back (TXP or MXP) or with a dedicated regenerator card.

2.7.3 Configurations for OTU2_XP

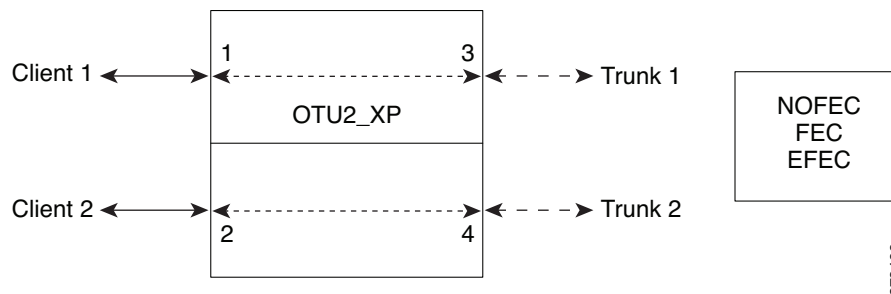
Cisco Transport Planner Release 9.0 supports the OTU2_XP card, which is a four-port, XFP-based, multirate (OC-192/STM-64, 10GE, 10G FC) Xponder for the ONS 15454 ANSI and ETSI platforms. All the ports are ITU-T G.709 compliant and support 40 channels (wavelengths) at 100-GHz channel spacing in the C-band (that is, the 1530.33 nm to 1561.42 nm wavelength range). G.709 framing and forward error correction (FEC) encoding can be independently enabled on each port, while the enhanced FEC (E-FEC) encoding is available only on ports 3 and 4. Both client and trunk ports are XFP pluggable. The client port supports SR, IR2, LR2, and ZR XFPs and the trunk port supports DWDM XFPs. Depending on which port acts as a client or trunk port, the OTU2_XP card operates in five different configurations as shown in the following table.

Configuration	Card listed as	Port 1	Port 2	Port 3	Port 4
Dual Transponder (2 x 10G transponder)	OTU2-XP-Txp mode	Client port 1	Client port 2	Trunk port 1	Trunk port 2
Dual Regenerator (2 x 10G standard regenerator with enhanced FEC [E-FEC] only on one port)	OTU2-XP-Regen mode	Trunk port 1	Trunk port 2	Trunk port 1	Trunk port 2
Single Regenerator (1 x 10G E-FEC regenerator with E-FEC on two ports))	OTU2-XP-Single Regen mode	Not used	Not used	Trunk port	Trunk port
Protected Transponder (1 x 10G splitter protected transponder)	OTU2-XP-Splitter mode	Client port	Not used	Trunk port (working)	Trunk port (protect)
Mixed Mode (1 x 10G transponder and 1 x 10G standard regenerator)	OTU2-XP-Mixed mode	Client port	Trunk port 4 without FEC or with FEC	Trunk port 1 without FEC or with FEC or E-FEC	Trunk port 2 without FEC or with FEC or E-FEC

2.7.3.0.1 Dual Transponder (OTU2-XP-Txp)

You can configure the OTU2_XP card as a dual transponder (Figure 2-13). When configured as a dual transponder (OTU2-XP-Txp), the card supports two completely independent bidirectional 10-Gbps services. Port 1 and Port 2 support traffic from or to port 3 and port 4, respectively. Both paths are completely independent and can support different services. G.709 wrapping or unwrapping and FEC correction capability can be independently activated on each path.

Figure 2-13 Dual-Transponder Configuration



You can assign one of the following service types as the client:

- OC-192/STM64
- 10GE WAN-PHY

- 10GE LAN-PHY
- 10G-FC

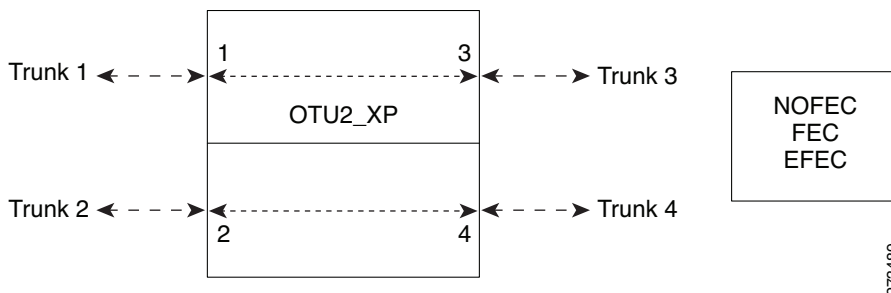
You can set one of the following trunk modes on both trunks for any of the service types:

- No FEC
- FEC
- E-FEC

2.7.3.0.2 Dual Regenerator (OTU2-XP-Regen)

You can configure the OTU2_XP card as a dual regenerator (Figure 2-14). When configured as a dual regenerator (OTU2-XP-Regen), the unit regenerates two completely independent bidirectional 10-Gbps signal paths (similar to the OTU2-XP-Txp configuration). In this configuration, all four ports support DWDM XFPs. You can also independently set G.709 framing and FEC capability for all four ports. You can enable E-FEC encoding only on ports 3 and 4.

Figure 2-14 Dual-Regenerator Configuration



You can use the following combinations of trunk modes according to the framing of the service to be regenerated:

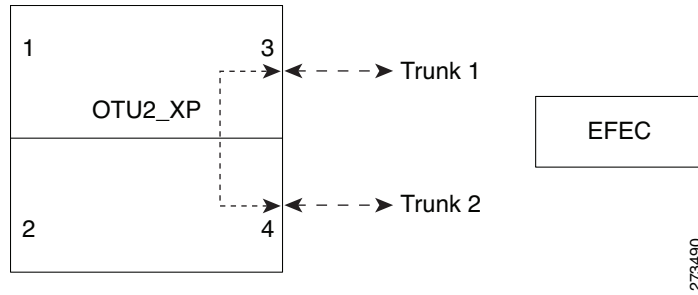
- OC-192/STM-64 service type:
 - Trunk ports 1 and 2: No FEC
 - Trunk ports 3 and 4: No FEC
- OTU-2 service type:
 - Trunk ports 1 and 2: FEC
 - Trunk ports 3 and 4: FEC

or

 - Trunk ports 1 and 2: E-FEC
 - Trunk ports 3 and 4: FEC

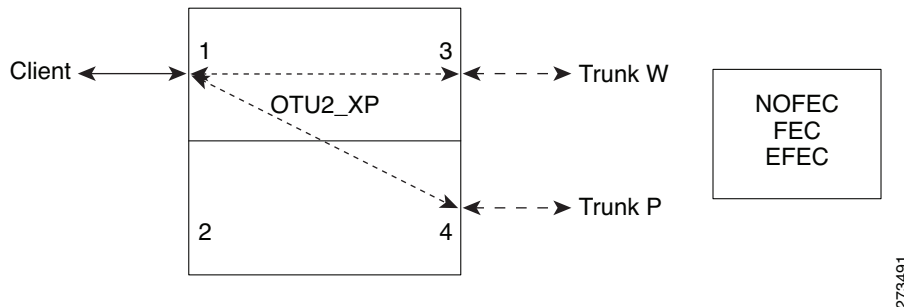
2.7.3.0.3 Single Regenerator (OTU2-XP- Single Regen)

You can configure the OTU2_XP card as a single regenerator (Figure 2-15). When configured as a single regenerator (OTU2-XP- Single Regen), the card regenerates only one bidirectional 10-Gbps signal path. The ports 3 and 4 support DWDM XFPs and G.709 framing as well as E-FEC. The ports 1 and 2 are not used.

Figure 2-15 Single-Regenerator Configuration

2.7.3.0.4 Protected Transponder (OTU2-XP- Splitter)

You can configure the OTU2_XP card as a protected transponder (Figure 2-16). When configured as a protected transponder (OTU2-XP- Splitter), the card implements the fiber-switched protection. In this configuration, the client service on port 1 is transmitted to ports 3 and 4 and then on to both trunks. Only one signal received from the two trunks on ports 3 and 4 is transmitted to port 1 (the signal from the other port is only monitored). After detecting a failure on one trunk, the unit automatically switches on the other port, which restores the signal on port 1. In protected-transponder configurations, port 2 is always disabled.

Figure 2-16 Protected-Transponder Configuration

You can set one of the following service type for the client port:

- OC-192/STM64
- 10GE WAN-PHY
- 10GE LAN-PHY
- 10G-FC

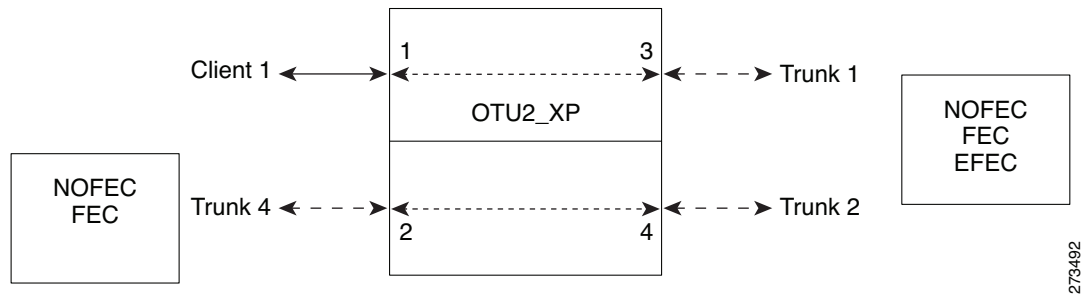
You can set one of the following trunk modes on both trunks for any of the service types:

- No FEC
- FEC
- E-FEC

2.7.3.0.5 Mixed Mode (OTU2-XP- Mixed)

You can configure the OTU2_XP card in mixed mode (Figure 2-17). When configured in mixed mode (OTU2-XP- Mixed), the card is a regenerator in one set of the ports and a transponder on the other set. The two sets are completely independent and can be configured to transmit or regenerate different services. You can independently set G.709 framing and FEC capability on each trunk port, but ports 1 and 2 cannot have E-FEC encoding.

Figure 2-17 Mixed-Mode Configuration



You can swap the configuration of the two sets, that is, ports 1 to 3 set as the regenerator and ports 2 and 4 as the transponder.

You can set one of the following service types for the client port:

- OC-192/STM64
- 10GE WAN-PHY
- 10GE LAN-PHY
- 10G-FC
- OTU2

You can set one of the following trunk modes on all the trunks for all service types:

- No FEC (all)
- FEC (all)
- E-FEC (only to ports 3 and 4)

CTP does not automatically select mixed mode for OTU2_XP cards. You need to select mixed mode for an OTU2_XP card to force it.

For further information on the OTU2_XP card, refer to the *Cisco ONS 15454 DWDM Reference Guide, Release 9.0*.

2.7.4 Configurations for Protection Switching Module (PSM)

The Protection Switching Module (PSM) card provides protection features at the optical level. The card can be deployed in any of the following configurations:

- Channel Protection (PSM-OCH)
- Multiplex Protection (PSM Section)
- Path Protection (PSM Line)

2.7.4.1 Channel Protection

Channel protection configuration provides protection at the trunk level for TXP/MXP configuration that do not have dedicated fiber-switched units. This level of protection is similar to fiber-switched protection.

The PSM splits the traffic originated by the transponder trunk between working and protected TX ports. Working TX (W-TX) and protected TX (P-TX) ports are connected to the add ports of Add-Drop stages. These connections add the channel in two different directions. In the receiving direction, PSM W-RX and P-RX ports are connected to the drop ports of Add-Drop stages. These connections receive the channel from the two directions. The PSM selects a path among W-RX and P-RX ports so that only one direction at a time is connected to COM-RX ports and therefore to the TXP/MXP.

2.7.4.2 Multiplex Protection

Multiplex protection configuration provides protection at the multiplex level for terminal sites.

In this configuration, the PSM is configured between the Mux/Dmx stage and the amplification stage. The traffic originated by the transponder trunk port is multiplexed by a multiplexer unit. Then, the PSM splits traffic between the working and protected paths, which are independently amplified by two separate booster cards. In the receiving direction, the signal is pre amplified and then, the PSM selects a path among W-RX and P-RX ports so that only one direction at a time is connected to COM-RX ports. The received signal is then demultiplexed to the TXP.

2.7.4.3 Path Protection

Path protection configuration provides protection at the line level for terminal sites.

In this configuration, the PSM is directly connected to the fibers after the amplification stage. In the transmitter direction, the traffic originated by the transponder trunk port is multiplexed by a multiplexer unit and amplified by the POST amplifier. The PSM then splits traffic between the working and protected paths directly connected to the PSM unit. In the receiving direction, the PSM selects a path option among W-RX and P-RX ports so that only one direction at a time is connected to COM-RX ports. The signal is then pre-amplified and demultiplexed to the TXP.

2.7.5 OPT-RAMP-C Card

Cisco Transport Planner 9.0 supports the OPT-RAMP-C card, which is a double-slot unit that improves unregenerated sections in long spans using the span fiber to amplify the optical signal. To achieve Raman amplification, two extra band signals called Raman wavelengths (of different wavelengths) are transmitted on the fiber in the direction opposite the payload. If the Raman signals are powerful enough and the span has the right characteristics, a distributed gain called the Raman gain is generated on the fiber, so that the apparent span loss is reduced. Raman gain values are in the range of 7 to 10 dB. The Raman effect provided by the OPT-RAMP-C card enables span-loss reduction.

2.7.6 GE_XPE and 10GE_XPE Cards

CTP Release 9.0 supports the GE_XPE and 10GE_XPE cards, which are Gigabit Ethernet (GE) XPonders for the ONS 15454 ANSI and ETSI platforms. The cards are designed for bulk GE_XPE and 10GE_XPE point-to-point transport over 10GE LAN PHY wavelengths for Video-on-Demand (VOD) or for broadcast video across protected 10GE LAN PHY wavelengths.

2.7.7 ADM-10G Card

CTP Release 9.0 supports both single-card and double-card (ADM-10G peer group) configurations of the ADM-10G card. In a single-card configuration, port 18 must be configured as a trunk interface (OC-192/STM-64 or OTU2 payload). In a double-card configuration (ADM-10G peer group), port 18 must be configured as an ILK2 interface.

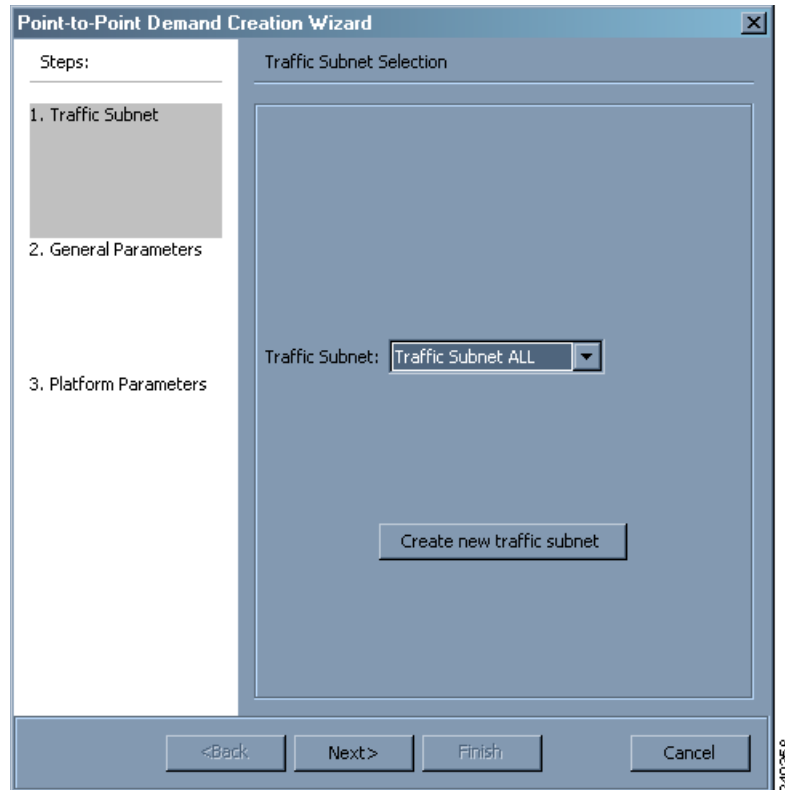
The card supports path protection/SNCP on client and trunk ports for both single-card and double-card configurations. The card does not support path protection/SNCP between a client port and a trunk port. Path protection/SNCP is supported only between two client ports or two trunk ports. The card supports client-to-client hairpinning, that is, creating of circuits between two client ports for both single-card and double-card configurations.

2.7.8 Creating a Point-to-Point Demand

Use the following procedure to add a point-to-point traffic demand:

-
- Step 1** In the NtView *Name* tab, click the **Create new Point-to-Point demand** icon in the toolbar. For more information about the Cisco Transport Planner icons, see [Appendix A, “GUI Information and Shortcuts.”](#)
 - Step 2** Click the source site of the demand.
 - Step 3** Click the destination site of the demand. The Point to Point Demand Creation Wizard appears ([Figure 2-18](#)).
 - Step 4** From the drop-down list, select **Traffic Subnet ALL** or any of the previously created traffic subnets to which this service demand should be part of, and proceed to [Step 5](#). If you wish to create a new traffic subnet see “[2.6 Creating Traffic Subnet](#)” section on page 2-16.
 - Step 5** Click **Next**.

Figure 2-18 Point to Point Demand Creation Wizard

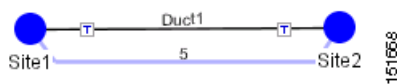


- Step 6** On the General Parameters page, complete the following:
- Label—Type the name of the demand.
 - Source—(Display only) Displays the source site name.
 - Destination—(Display only) Displays the destination site name.
 - Service Type—Choose the service type from the drop-down list. For a list of services, see the [“1.1.2.5 Service Support” section on page 1-4](#).
 - Present # ch—Enter the number of channels to be created. The Forecast # ch field automatically updates with the number entered in this field.
 - Forecast # ch—Enter the number of channels to be installed at a later date. This value includes the Present # ch value. For example, if you entered 4 in the Present # ch value and want to add two channels in the future, enter 6.
- Step 7** Click **Next**.
- Step 8** On the Platform Parameters page, complete the following:
- Protection—Choose the protection type from the drop-down list: **Y-Cable Protected**, **Client 1+1**, **Fiber Switched**, **PSM-OCH**, or **Unprotected**. For more information on protection types, see the [“1.1.2.4 Protection Scheme Support” section on page 1-4](#).
 - Path—(Unprotected only) Choose the routing type from the drop-down list:
 - Auto—Allows the highest degree of flexibility in routing the channels. Cisco Transport Planner routes the channels with the lowest possible cost, given the other constraints.
 - A—Select this for a Terminal or a Terminal+ site.
 - A or B—Select either of these for a Line or a Line+ site.

- A, B, C, or D—Select either of these for a Multi-Degree site if four ducts are connected.
 - A, B, C, D, E, F, G, or H—Select either of these for a Multi-Degree site if eight ducts are connected.
 - Aw or Ap—Select either of these for a PSM Terminal - Optical Path Protection or PSM Terminal - Multiplex Section Protection site.
- Optical Bypass—(Unprotected only) Choose the site where the channels for the current demand will be optically bypassed. A channel in optical bypass is dropped on one side of the node and added on the other side of the same node to allow the future use of that node as an add/drop location.
- Step 9** Complete the following fields in the Interface Parameters area. The options available are based on the service type selected in [Step 6](#).
- Transponder—Click to expand, then check the card type check box to select the card at the end sites of the service channels.
 - Line Card—Click to expand, then check the card type check box to select the card at the end sites of the service channels.
 - Alien Card—Appears only if you created a third-party interface as described in the [“1.5.5 Defining Third-Party DWDM Interfaces”](#) section on page 1-27. Click to expand, and then check the card type check box to select the card at the end sites of the service channels.
 - Pluggable Card—Click to expand, then check the card type check box to select the card at the end sites of the service channels.
- Step 10** In the Client Interface area, define the client interface type (SR, IR, or LR) for the source and destination from the Source and Destination drop-down lists. This option is available for transponder and muxponder interfaces that have pluggable client interfaces, and depends on the selected service type and card type.
- Step 11** Click **Finish**. The Demand Editor dialog box appears listing the present and forecast channels.

The demand appears in the NtView *name* tab and in the Project Explorer tree in the Service Demands > Point To Point folders. A demand is a solid line when selected and a dotted line when not selected. The line has a number above it that indicates the number of channels that are present. [Figure 2-19](#) shows a selected point-to-point demand with five channels between sites 1 and 2.

Figure 2-19 Point-to-Point Demand Between Two Sites



- Step 12** To add a new service, click the **Add new service** icon in the toolbar. A new row appears. Complete the parameters for the new channel.
- Step 13** To delete an existing channel, select the row and click the **Delete service** icon in the toolbar.
- Step 14** To add a regeneration site, click the **Regeneration...** icon in the toolbar. The Regeneration editor appears. The regeneration site can be created only at the trail level. For more information, see the [“2.7.13 Creating a Regeneration Site”](#) section on page 2-43.
- Step 15** Click **OK** to save the changes to the channels and close the Demand editor dialog box, or **Cancel** to close the dialog box without saving the changes.



Note

To make changes to the demand parameters, see the [“4.6 Editing a Point-to-Point Demand”](#) section on page 4-15, or click **Cancel** to close the Demand Editor dialog box.

**Note**

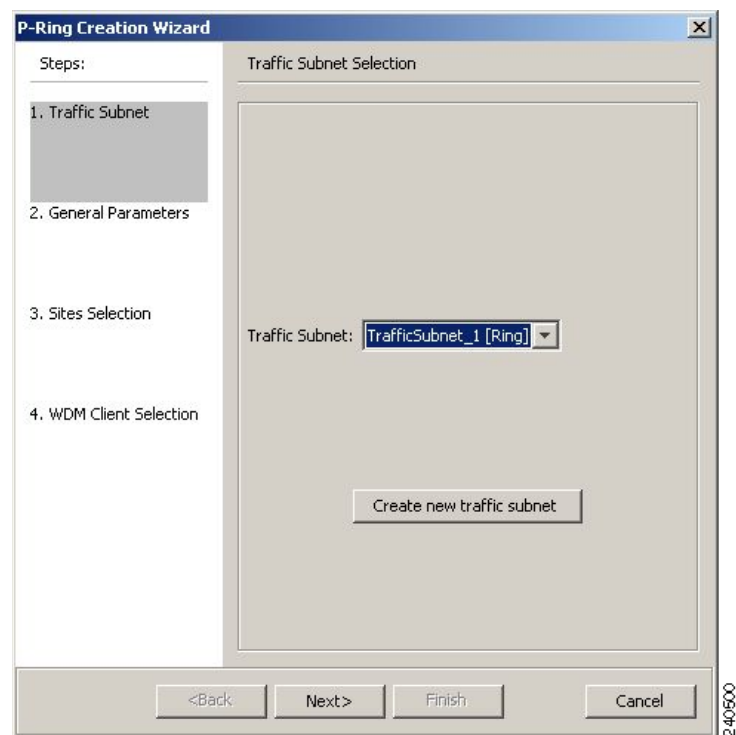
For each network, Cisco Transport Planner automatically creates a default subnet that exactly matches the overall network topology. This cannot be deleted.

2.7.9 Creating a Protected Ring Demand

Use the following procedure to create a P-ring traffic demand.

- Step 1** Create a ring network using either the procedures in the “2.1 Creating a Project” section on page 2-1 or by manually placing sites into a ring configuration.
- Step 2** In the Native Net# tab, click the **Create new P-Ring demand** icon in the toolbar. The P-Ring Creation Wizard appears (Figure 2-20). For more information about the Cisco Transport Planner icons, see Appendix A, “GUI Information and Shortcuts.”

Figure 2-20 P-Ring Creation Wizard



- Step 3** For each network, the tool automatically creates, a default subnet that exactly matches the overall network topology. This cannot be deleted. From the drop-down list, select any previously created traffic subnet with a ring topology that this circuit should be part of and proceed to Step 4. If you wish to create a new traffic subnet see 2.6 Creating Traffic Subnet, page 2-16.
- Step 4** On the General Parameters page, complete the following:
- Label—Enter the name of the demand.

- **Service Type**—Choose the service type from the drop-down list. For a list of services, see the [“1.1.2.5 Service Support” section on page 1-4](#).
- **Present # ch**—Enter the number of channels to be created. The Forecast # ch field automatically updates with the number entered in this field.
- **Forecast # ch**—Enter the number of channels to be installed at a later date. This value includes the Present # ch value. For example, if you entered 4 in the Present # ch value and want to add two channels in the future, enter 6.

Step 5 Click **Next**.

Step 6 On the Sites Selection page, in the Protection Sites area, press **Ctrl** and click the sites that you want to add to the P-ring. A P-ring requires at least two sites. Click the right arrow button. To remove a site added to the list, click the site and click the left arrow button.
In the Optical Bypass area, press **Ctrl** and click the sites that you want to add to the P-ring. Click the right arrow button. To remove a site added to the list, click the site and click the left arrow button.

Step 7 Click **Next**.

Step 8 On the WDM Client Selection page, complete the following interface parameters. The options available are based on the service type selected in [Step 4](#).

- **Transponder**—Click to expand, then check the card type check box to select the card at the end sites of the service channels.
- **Line Card**—Click to expand, then check the card type check box to select the card at the end sites of the service channels.
- **Alien Card**—Appears only if you created a third-party interface as described in the [“1.5.5 Defining Third-Party DWDM Interfaces” section on page 1-27](#). Click to expand, and then check the card type check box to select the card at the end sites of the service channels.
- **Pluggable Card**—Click to expand, then check the card type check box to select the card at the end sites of the service channels.

In the Client Interface area, define the client interface type (SR, IR, or LR) for the source and destination from the Source and Destination drop-down lists. This option is available for transponder and muxponder interfaces that have pluggable client interfaces, and depends on the selected service type and card type.

Step 9 Click **Finish**. The Demand Editor dialog box appears.

The demand appears in the NtView *name* tab and in the Project Explorer tree in the Service Demands > P-Rings folders. A demand is a solid line when selected and a dotted line when not selected. The line has a number above it that indicates the number of channels present. [Figure 2-21](#) shows a selected one-channel P-ring between sites 1, 2, 3, and 5 with an optical bypass of site 4.

Step 10 To add a new service, click the **Add new service** icon in the toolbar. A new row appears. Complete the parameters for the new channel.

Step 11 To delete an existing channel, select the row and click the **Delete service** icon in the toolbar.

Step 12 To add a regeneration site, click the **Regeneration...** icon in the toolbar. The Regeneration editor appears. The regeneration site can be created only at the trail level. For more information, see the [“2.7.13 Creating a Regeneration Site” section on page 2-43](#).

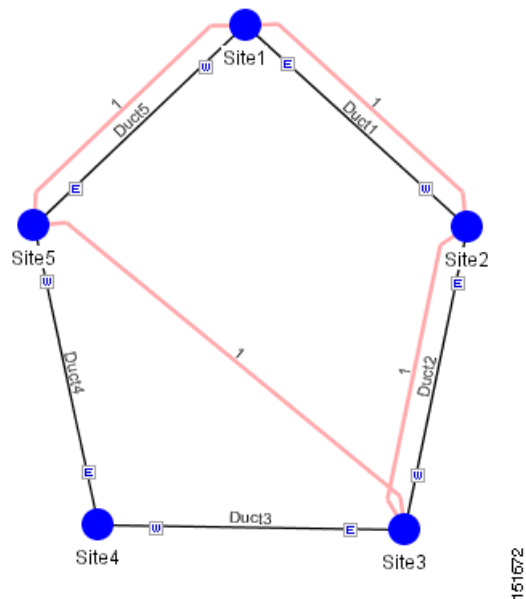
Step 13 Click **OK** to save the changes to the channels and close the Demand Editor dialog box, or **Cancel** to close the dialog box without saving the changes.



Note

To make changes to the demand parameters, see the [“4.7 Editing a P-Ring Demand” section on page 4-17](#), or click **Cancel** to close the Demand Editor dialog box.

Figure 2-21 P-Ring Demand



151672

2.7.10 Creating a ROADM Demand

Use the following procedure to create ROADM traffic groups and demands:

- Step 1** In the Project Explorer, under Nets, right-click the **ROADM** folder and choose **New ROADM Group**. The ROADM Group Creation Wizard appears.
- Step 2** Select the desired traffic subnet from the Traffic Subnet field. You can create a new traffic subnet if desired using the “[2.6 Creating Traffic Subnet](#)” section on page 2-16.
- Step 3** Type the ROADM traffic group name in the Group Name field.
- Step 4** Check the desired sites.
- Step 5** Click **Finish**. The new ROADM traffic group appears under the ROADM folder in the Project Explorer.
- Step 6** Right-click the new ROADM traffic group and choose **Create new ROADM demand** from the shortcut menu. The Create ROADM Demand dialog box appears ([Figure 2-22](#)).

Figure 2-22 Create ROADM Demand Dialog Box

Service Types	Yes/No	Client Interface	Y-Cable	1+1	Fiber Switched	Supported
<input type="checkbox"/> 10GE LAN PHY	<input type="checkbox"/>	MXP_MR_2.5G	<input checked="" type="checkbox"/>	<input checked="" type="checkbox"/>	<input type="checkbox"/>	<input type="checkbox"/>
<input type="checkbox"/> 10GE WAN PHY	<input type="checkbox"/>	MXP_MR_2.5G	<input checked="" type="checkbox"/>	<input checked="" type="checkbox"/>	<input checked="" type="checkbox"/>	<input type="checkbox"/>
<input type="checkbox"/> 15530 10-Gbps Aggregated	<input type="checkbox"/>	MXP_MR_100ME-wjFEC	<input checked="" type="checkbox"/>	<input checked="" type="checkbox"/>	<input type="checkbox"/>	<input type="checkbox"/>
<input type="checkbox"/> 15530 2.5-Gbps Aggregated	<input type="checkbox"/>	MXP_MR_100ME-wjFEC	<input checked="" type="checkbox"/>	<input checked="" type="checkbox"/>	<input type="checkbox"/>	<input type="checkbox"/>
<input type="checkbox"/> 15530 Data MXP	<input type="checkbox"/>	MXP_MR_100ME-wjFEC	<input checked="" type="checkbox"/>	<input checked="" type="checkbox"/>	<input type="checkbox"/>	<input type="checkbox"/>
<input type="checkbox"/> 15530 MR Transport	<input type="checkbox"/>	MXP_MR_100ME-wjFEC	<input checked="" type="checkbox"/>	<input checked="" type="checkbox"/>	<input type="checkbox"/>	<input type="checkbox"/>
<input type="checkbox"/> 1G-FICON	<input type="checkbox"/>	TXP_MR_10E-wjFEC	<input checked="" type="checkbox"/>	<input checked="" type="checkbox"/>	<input type="checkbox"/>	<input type="checkbox"/>
<input type="checkbox"/> 2G-FICON	<input type="checkbox"/>	TXP_MR_10E-wjFEC	<input checked="" type="checkbox"/>	<input checked="" type="checkbox"/>	<input type="checkbox"/>	<input type="checkbox"/>
<input type="checkbox"/> 2R Any Rate	<input type="checkbox"/>	TXP_MR_10E-wjFEC	<input checked="" type="checkbox"/>	<input checked="" type="checkbox"/>	<input type="checkbox"/>	<input type="checkbox"/>
<input type="checkbox"/> D1 Video	<input type="checkbox"/>	TXP_MR_10E-wjFEC	<input checked="" type="checkbox"/>	<input checked="" type="checkbox"/>	<input type="checkbox"/>	<input type="checkbox"/>
<input type="checkbox"/> DV-6000	<input type="checkbox"/>	TXP_MR_10E-y-wjFEC	<input checked="" type="checkbox"/>	<input checked="" type="checkbox"/>	<input type="checkbox"/>	<input type="checkbox"/>
<input type="checkbox"/> DVB ASI	<input type="checkbox"/>	TXP_MR_10E-y-wjFEC	<input checked="" type="checkbox"/>	<input checked="" type="checkbox"/>	<input type="checkbox"/>	<input type="checkbox"/>
<input type="checkbox"/> ESCON	<input type="checkbox"/>	TXP_MR_10E-y-wjFEC	<input checked="" type="checkbox"/>	<input checked="" type="checkbox"/>	<input type="checkbox"/>	<input type="checkbox"/>
<input type="checkbox"/> Fast Ethernet 100Mbps	<input type="checkbox"/>	TXP_MR_10E-y-wjFEC	<input checked="" type="checkbox"/>	<input checked="" type="checkbox"/>	<input type="checkbox"/>	<input type="checkbox"/>
<input type="checkbox"/> Fibre Channel	<input type="checkbox"/>	MXP_2.5G_10E-wjFEC	<input checked="" type="checkbox"/>	<input checked="" type="checkbox"/>	<input type="checkbox"/>	<input type="checkbox"/>

- Step 7** Enter a name for the demand in the Demand Name field.
- Step 8** Select a traffic pattern type (Hub or Meshed) from the Traffic Type drop-down list. If you select Hub, the First Site drop-down list becomes available. If you selected Meshed, proceed to [Step 10](#).
- Step 9** For Hub traffic types, select the originating site from the First Site drop-down list.
- Step 10** Select a connectivity type from the Connectivity type drop-down list: **Protected**, **Unprotected Minimum Hop**, **Unprotected Optimum Path**, or **Unprotected Subnet**. Refer to the “[1.1.5.3 ROADM Traffic Demands](#)” section on page 1-10 for more information on the connectivity choices. If you chose Unprotected Subnet, continue with the next step; otherwise proceed to [Step 12](#).
- Step 11** If you chose Unprotected Subnet, choose the starting site and the direction the ring must be traversed from the drop-down lists.
- Step 12** In the Service Types list, check the boxes for one or more client service types for the ROADM demand. The client interfaces that support each service type appear in the table to the right of the Service Types list.
- Step 13** To further define the client interfaces, complete the following options for each client interface listed in the table. Check boxes in gray are not available for selection.
- Yes/No—Check to select this card to implement the service type.
 - Client Interface—(Display only) Displays the card type for the selected service type.
 - Y Protected—Check to select Y-cable protection if the connectivity type is Protected.
 - 1+1 Protected—Check to select 1+1 protection if the connectivity type is Protected.
 - Fiber Switched—Check to select fiber-switching protection if the connectivity type is Protected.
 - Supported Service—(Display only) Displays the service types supported for the card.
- You can select more than one client interface to support the same service type. By default, Cisco Transport Planner checks the best client interface to support each service.
- Step 14** Click **OK** to create the demand.
- Step 15** To finalise the ROADM demand, complete the following steps:
- Analyse the network.
 - Upgrade the analysed network.

- c. In the upgraded network, go to the card listed under the ROADM demand, select the required connectivity (for example, Site1 - Site2), right-click and select the Finalize connectivity option. The ROADM Finalise Connectivity Wizard appears.
- d. On the General Parameters page, complete the following:
 - Label—Enter the name of the demand.
 - Service Type—Choose the service type from the drop-down list. For a list of services, see the [“1.1.2.5 Service Support” section on page 1-4](#).
 - Present # ch—Enter the number of channels to be created. The Forecast # ch field automatically updates with the number entered in this field.
 - Forecast # ch—Enter the number of channels to be installed at a later date. This value includes the Present # ch value.
- e. In the Platform area of the Platform Parameters page, complete the following:
 - Protection—Choose the protection type from the drop-down list: **Y-Cable Protected**, or **Client 1+1**. For more information on protection types, see the [“1.1.2.4 Protection Scheme Support” section on page 1-4](#).
- f. In the 454DWDM area, complete the following:
 - Transponder—Click to expand, then check the card type check box to select the card at the end sites of the service channels.
- g. In the Client Interface area, define the client interface type (SR, IR, or LR) for the source and destination from the Source and Destination drop-down lists. This option is available for transponder and muxponder interfaces that have pluggable client interfaces, and depends on the selected service type and card type.
- h. Click **Finish**. The Demand Editor dialog box appears listing the present and forecast channels.
- i. To add a new service, click the **Add new service** icon in the toolbar. A new row appears. Complete the parameters for the new channel.
- j. To delete an existing channel, select the row and click the **Delete service** icon in the toolbar.
- k. To add a regeneration site, click the **Regeneration...** icon in the toolbar. The Regeneration editor appears. The regeneration site can be created only at the trail level. For more information, see the [“2.7.13 Creating a Regeneration Site” section on page 2-43](#).
- l. Click **OK** to save the changes to the channels and close the Demand editor dialog box, or **Cancel** to close the dialog box without saving the changes.
- m. Analyse the upgraded network again.

The demands that were finalized appear in the reports.

2.7.11 Creating Ethernet Aggregated Demands

An Ethernet aggregated demand is a collection of low-rate Gigabit Ethernet/10Gigabit Ethernet services that can be aggregated on a single 10-Gbps wavelength division multiplexing (WDM) trunk. This demand is supported only by the GE_XP, 10GE_XP, GE_EXP, and 10GE_EXP cards when configured as an L2-Switch.

The Ethernet Aggregation Creation wizard allows you to:

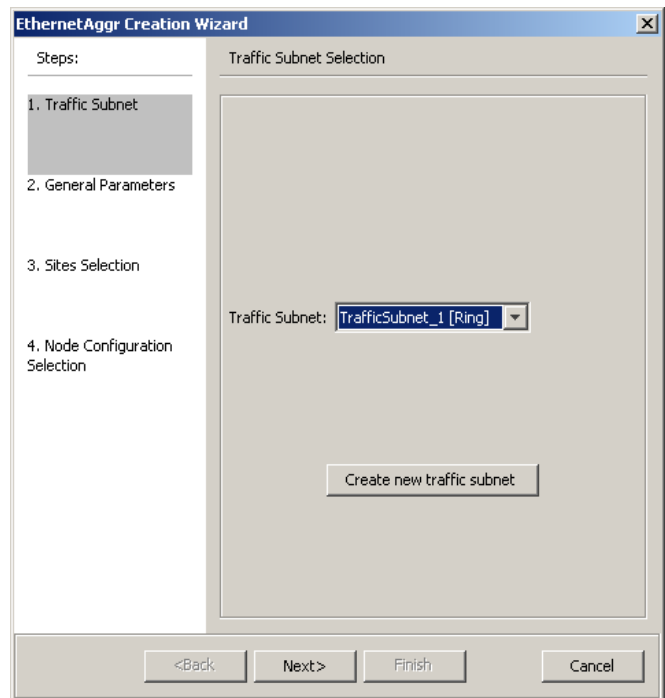
- Create one WDM transport channel at a time over a predefined traffic subnet.

- Specify the wavelength to be used for the channel, and define a list of locations with add/drop VLAN circuit capability.
- Create a set of desired VLAN circuits on this WDM transport channel.
- The check functionality generates a report showing for each section of the subnet where the WDM transport channel is over allocated and then perform corrective action when required.
- The clone functionality creates an identical copy of the current WDM transport channel with the same add/drop sites and WDM channel configuration parameters. You can then start filling this channel with the desired circuits.

Use the following procedure to create Ethernet aggregated demands:

- Step 1** In the NtView *name* tab, click the **Create new AggregatedEthernet demand** icon in the toolbar. For more information about Cisco Transport Planner icons, see [Appendix A, “GUI Information and Shortcuts.”](#) The EthernetAggr Creation Wizard appears ([Figure 2-23](#)).

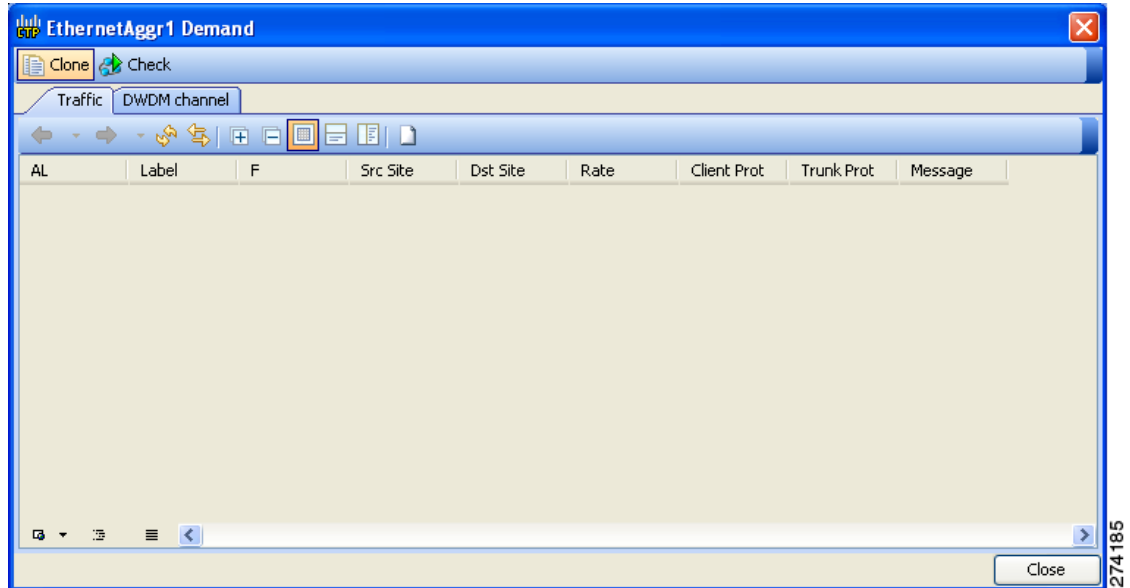
Figure 2-23 Ethernet Aggregation Creation Wizard



- Step 2** Choose the desired traffic subnet from the Traffic Subnet drop-down list. You can create a new traffic subnet if desired (see [2.6 Creating Traffic Subnet, page 2-16](#)).
- Step 3** Click **Next**.
- Step 4** In the General Parameters pane, enter values in the following fields:
- **Label**—Type the name of the demand. The default value is EthernetAggr1.
 - **Present/Forecast**—Check this box if this demand will be needed in the future; uncheck this box if this demand is needed now. This parameter drives the list of pluggable port modules to be equipped on the card and will affect BoM reports.
- Step 5** Click **Next**.

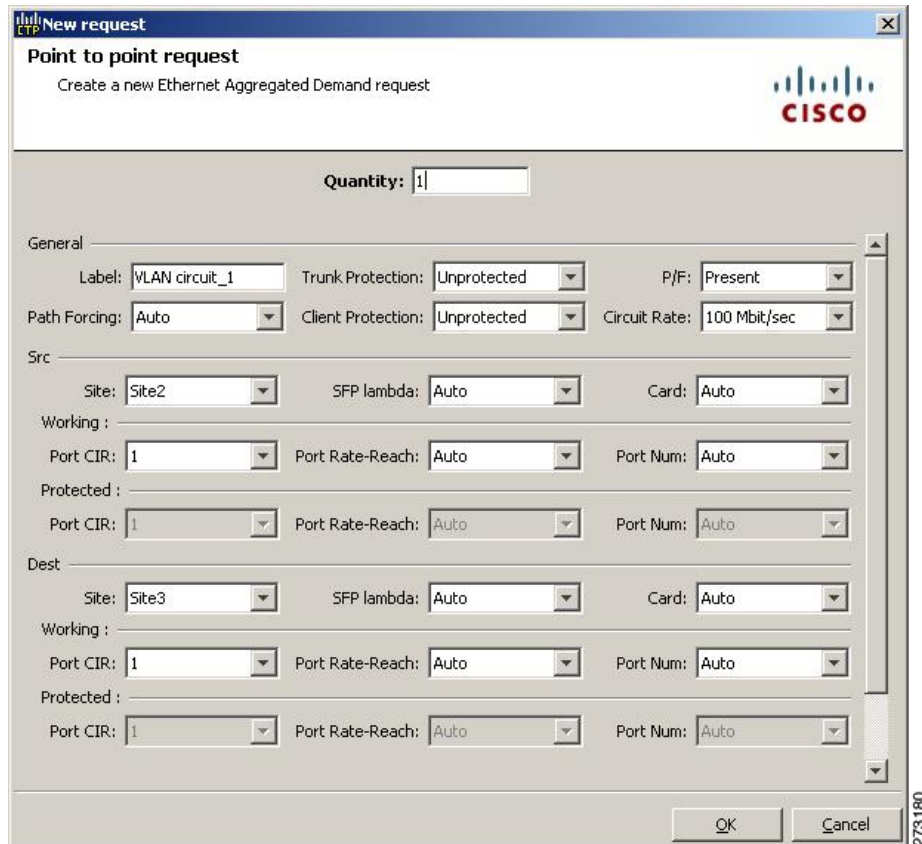
- Step 6** In the Sites selection pane, complete the following tasks:
- In the Protection Sites area, press **Ctrl** and click the sites that you want to add to the Ethernet aggregated demand. An Ethernet aggregated demand requires at least two sites. Click the right arrow button. To remove a site added to the list, click the site and click the left arrow button.
 - In the Optical Bypass area, press **Ctrl** and click the sites that you want to add to the Ethernet aggregated demand. Click the right arrow button. To remove a site added to the list, click the site and click the left arrow button. If the Present/Forecast check box is checked, you cannot select Optical Bypass sites. A channel in optical bypass is dropped on one side of the node and added on the other side of the same node to allow the future use of that node as an add/drop location.
- Step 7** In the Node Configuration selection pane, enter values for the following options:
- DWDM Trunk—Select the DWDM trunk type. You can specify the kind of WDM trunk interface for the card in each add/drop site. Allowed values are:
 - Auto
 - w/EFEC
 - w/FEC
 - w/o FEC
 - Wavelength—Select the WDM transport channel wavelength. This option allows you to force the current WDM transport channel wavelength. Wavelengths are listed based on the selected band. Allowed values are:
 - Auto—Allows CTP to assign a wavelength to the channel with the lowest possible cost, given the other set of constraints.
 - C band-32 ch.odd
 - L band- 32 ch.odd
 - C band- 40 ch
 - C band - 72 ch
 - C band- 80 ch
 - New CFG—Choose the desired card type for each of the protected sites.
- Step 8** Click **Finish**. The *name* Demand window appears (Figure 2-24).

Figure 2-24 EthernetAggr1 Demand Window, TrafficTab



Step 9 To add a circuit, click the **Create a new circuit** icon. The New Request window appears (Figure 2-25).

Figure 2-25 New Request Window



Step 10 The New Request window contains four areas of information: Quantity, General, Src, and Dest.

Quantity Area

Quantity—Enter the number of circuits to be created.

General Area

- **Label**—Enter the label for the circuit. By default, VLAN_Circuit_x is used.
- **Trunk Protection**—Enter the trunk protection type. Allowed values are:
 - Unprotected
 - Protected
- **P/F**—Select Forecast if this demand will be needed in the future. Select Present if this demand is needed now. This parameter drives the list of pluggable port modules to be equipped on the card and affects BoM reports.
- **Path Forcing**—This option allows you to force the circuit routing on the traffic subnet associated with this demand. Allowed values are:
 - Auto—(Default) Causes the tool to automatically define the trunk path.
 - Side *x*—Represents the label of the side on the Src site where the circuit is routed.
- **Client Protection**—Allowed values are:
 - Unprotected
 - Client 1+1
- **Circuit rate**—Displays the allowed circuit rates.

Src Area

- **Site**—Select the source site. Allowed values include the list of sites added in the WDM traffic channel.
- **SFP lambda**—Select the desired SFP/XFP for this port or set it to Auto to allow the tool to select an appropriate value.
- **Card**—Select the Card. Allowed values are Auto, 10GE-XP, 10GE-EXP, GE-XP, and GE-EXP. Auto allows the tool to select an appropriate card type based on other constraints.

The Src area contains Working and Protected subareas.

Working sub-area

- **Port CIR**—Select the CIR, with 1 being the highest and 0.1 being the lowest.
- **Port Rate-Reach**—Select the desired PPM for this port, or set it to Auto to allow the tool to select an appropriate value.
- **Port Num**—Select the port number. Allowed values are Auto, 1, and 2. Auto allows the tool to select an appropriate port number based on other constraints.

Protected sub-area

These fields are enabled only if client protection is enabled in the Client Protection field.

- **Port CIR**—Select the CIR, with 1 being the highest and 0.1 being the lowest.
- **Port Rate-Reach**—Select the desired PPM for this port, or set it to Auto to allow the tool to select an appropriate value.
- **Port Num**—Select the port number. Allowed values are Auto, 1, and 2. Auto allows the tool to select an appropriate port number based on other constraints.

Dest Area

- **Site**—Select the destination site. Allowed values include the list of sites added in the WDM traffic channel.
- **SFP lambda**—Select the desired SFP/XFP for this port or set it to Auto to allow the tool to select an appropriate value.
- **Card**—Select the card. Allowed values are Auto, 10GE-XP, 10GE-EXP, GE-XP, and GE-EXP. Auto allows the tool to select an appropriate card type based on other constraints.

The Dest area contains Working and Protected subareas.

Working sub-area

- **Port CIR**—Select the CIR, with 1 being the highest and 0.1 being the lowest.
- **Port Rate-Reach**—Select the desired PPM for this port, or set it to Auto to allow the tool to select an appropriate value.
- **Port Num**—Select the port number. Allowed values are Auto, and 1 to 20. Auto allows the tool to select an appropriate port number based on other constraints.

Protected sub-area

These fields are enabled only if the client protection is enabled in the Client Protection field.

- **Port CIR**—Select the CIR, with 1 being the max and 0.1 being the lowest.
- **Port Rate-Reach**—Select the desired PPM for this port, or set it to Auto to allow the tool to select an appropriate value.
- **Port Num**—Select the port number. Allowed values Auto, 1, to 20. Auto allows the tool to select an appropriate port number based on other constraints.

Step 11 Click **OK**.

Step 12 If you want to clone this demand, click the **Clone** button in the left corner of the screen. A new demand, which is a copy of this demand, is created and appears in the Project Explorer pane.

Step 13 Click the **Check** tab in the left corner of the window to generate a report showing the circuit path in the WDM traffic channel and to check any over-allocation of bandwidth (Figure 2-26). The report shows, in a row, each of the sites on the subnet, and each span in between.

Figure 2-26 Circuit Path View in a Ethernet Aggregated Demand



- Step 14** To add a regeneration site, click the **Regeneration...** icon in the toolbar of the DWDM channel tab. The Regeneration Editor appears. The regeneration site can be created only at the trail level. For more information, see the “[2.7.13 Creating a Regeneration Site](#)” section on page 2-43.
- Step 15** Click **Close**. To edit circuits, see the “[4.9 Editing an Ethernet Aggregated Demand](#)” section on page 4-21.

2.7.12 Creating TDM Aggregated Demands

A TDM aggregated demand is a collection of low-rate SONET and Gigabit Ethernet services that is aggregated on a single 10-G WDM trunk. The TDM aggregated demand is a specific service demand that is carried only by the ADM-10G card. You can define aggregated TDM demand only for an ANSI design, and this demand is supported only on a ring traffic subnet.

The TDM Aggr Creation wizard allows you to:

- Create one WDM transport channel at a time over a predefined traffic subnet
- Specify the wavelength to be used for the channel, and define a list of locations with add/drop STS circuit capability.
- Create a set of STS circuits on this WDM transport channel to pass traffic.
- The check functionality generates a report showing, for each section of the subnet, where the WDM transport channel is over allocated and then perform, when required, the corrective action.

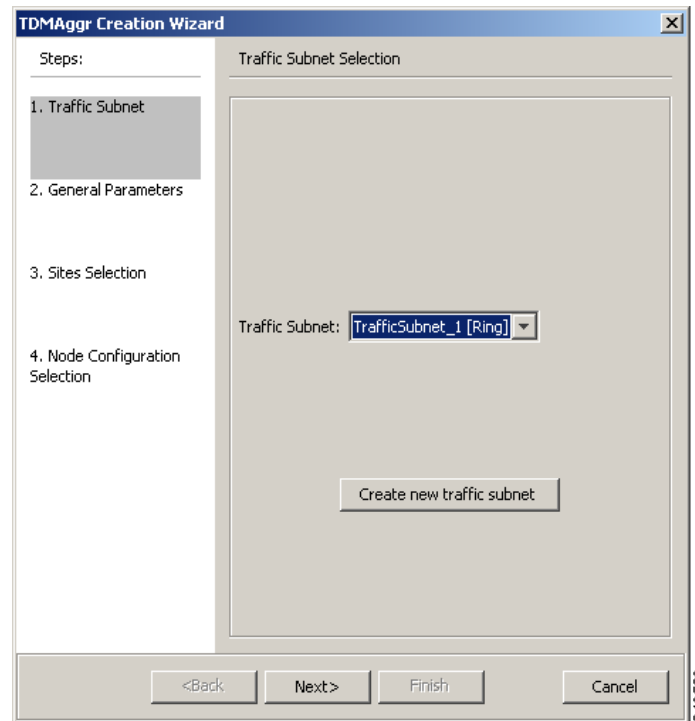
The total amount of bandwidth used by all the defined circuits in each section of the WDM transport channel cannot exceed the maximum channel capacity of STS-192c. Sections exceeding the maximum capacity are colored red in the report. Demands that fail the check are flagged as invalid demands and the Analyzer stops.

The clone functionality allows you to create an empty copy of the current WDM transport channel, with the same add/drop sites and WDM channel configuration parameters. You can then start filling this channel with the desired circuits.

Use the following procedure to create TDM aggregated demands:

- Step 1** In the NtView *name* tab, click the Create new TDM Aggregated demand icon in the toolbar. For more information about CTP icons, see [Appendix A, “GUI Information and Shortcuts.”](#) The TDMAggr wizard appears ([Figure 2-27](#)).

Figure 2-27 TDM Aggr Creation Wizard



- Step 2** Select the desired traffic subnet from the Traffic Subnet drop-down list. You can create a new traffic subnet if desired using (see [2.6 Creating Traffic Subnet, page 2-16](#)).
- Step 3** Click **Next**.
- Step 4** In the General Parameters pane, complete the following tasks:
- **Label**—Type the name of the demand. The default value is TDMAggr1.
 - **Present/Forecast**—Check this box if this demand will be needed in the future; uncheck this box if this demand is needed now. This parameter drives the list of pluggable port modules to be equipped on the card and will affect BoM reports.
- Step 5** Click **Next**.
- Step 6** In Sites selection pane, complete the following tasks:
- In the Protection Sites area, press **Ctrl** and click the sites that you want to add to the TDM aggregated demand. A TDM aggregated demand requires at least two sites. Click the right arrow button. To remove a site added to the list, click the site and click the left arrow button.

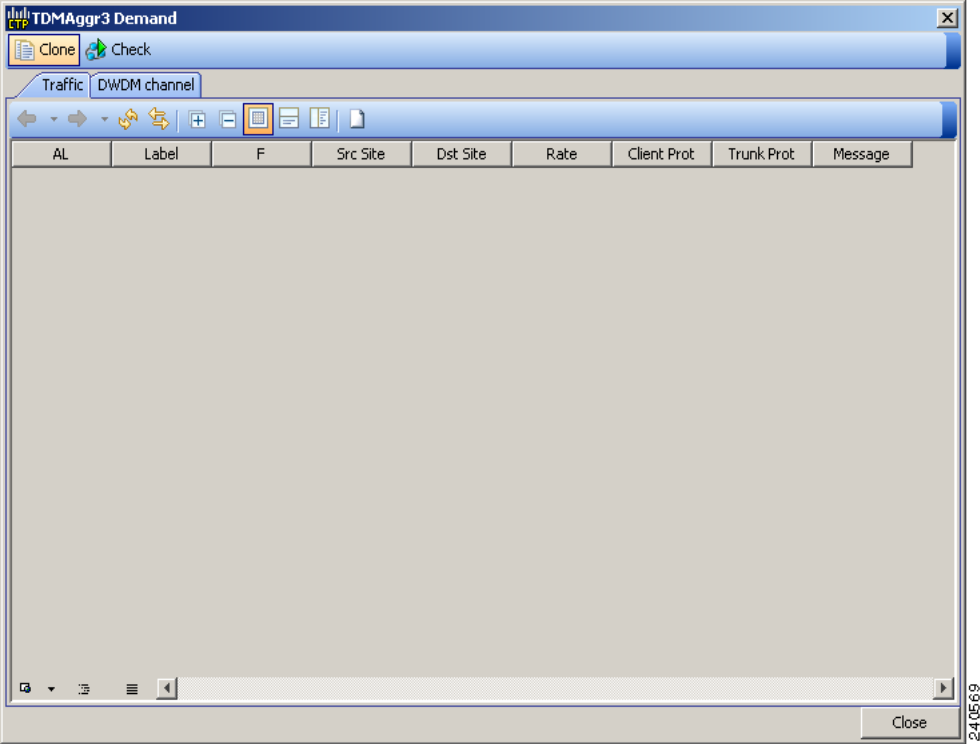
- In the Optical Bypass area, press **Ctrl** and click the sites that you want to add to TDM aggregated demand. Click the right arrow button. To remove a site added to the list, click the site and click the left arrow button. If the Present/Forecast check box is checked, you cannot select Optical Bypass sites. A channel in optical bypass is dropped on one side of the node and added on the other side of the same node to allow the future use of that node as an add/drop location.

Step 7 In the Node Configuration selection pane, complete the following tasks:

- DWDM Trunk—Select the DWDM trunk type to specify the kind of WDM trunk interface for the card in each allowed add/drop site. Allowed values are:
 - Auto
 - w/EFEC
 - w/FEC
 - w/o FEC
- Wavelength—Allows you to force the current WDM transport channel wavelength. Allowed values are:
 - Auto—Allows CTP to assign a wavelength to the channel with the lowest possible cost, given the other set of constraints.
 - C band-32 ch.odd
 - L band- 32 ch.odd
 - C band- 40 ch
 - C band- 72 ch
 - C band- 80 ch

Step 8 Click **Finish**. The *name* Demand window appears ([Figure 2-28](#)).

Figure 2-28 TDMAggr Demand Window



Step 9 To add a circuit, click the **Create a new circuit** icon. The New Request window appears (Figure 2-29).

Figure 2-29 New Request Window

Step 10 The New Request window contains four areas of information: Quantity, General, Src, and Dest.

Quantity Area

Quantity—Enter the number of circuits to be created.

General Area

- **Label**—Enter the label for the circuit. By default, VLAN_Circuit_x is used.
- **Trunk Protection**—Enter the trunk protection type. Allowed values are:
 - Unprotected
 - UPSR
- **P/F**—Select Forecast if this demand will be needed in the future. Select Present if this demand is needed now. This parameter drives the list of pluggable port modules to be equipped on the card and affects BoM reports.
- **Path Forcing**—This option allows you to force the circuit routing on the traffic subnet associated with this demand. Allowed values are:
 - Auto—(Default) Causes the tool to automatically define the trunk path.
 - Side *x*—Represents the label of the side on the Src site where the circuit is routed.
- **Client Protection**—Allowed values are:
 - Unprotected
 - 1+1 APS

- Circuit rate—Displays the allowed circuit rates.

Src Area

- Site—Select the source site. Allowed values include the list of sites added in the WDM traffic channel.
- SFP lambda—Select the desired SFP/XFP for this port or set it to Auto to allow the tool to select an appropriate value.
- Card—Select the Card. Allowed values are Auto and ADM-*x*. Auto allows the tool to select an appropriate card type based on other constraints.

The Src area contains Working and Protected sub-areas.

Working sub area

- Port Num—Select the port number. Allowed values Auto and 1 to 16. Auto allows the tool to select an appropriate port number based on other constraints.
- Port Rate-Reach—Select the desired PPM for this port, or set it to Auto to allow the tool to select an appropriate value.

Protected sub area

These fields are enabled only if client protection is enabled in the Client Protection field.

- Port Num—Select the port number. Allowed values are Auto and 1 to 16. Auto allows the tool to select an appropriate port number based on other constraints.
- Port Rate-Reach—Select the desired PPM for this port, or set it to Auto to allow the tool to select an appropriate value.

Dest Area

- Site—Select the destination site. Allowed values include the list of sites added in the WDM traffic channel.
- SFP lambda—Select the desired SFP/XFP for this port or set it to Auto to allow the tool to select an appropriate value.
- Card—Select the card. Allowed values are Auto and ADM-*x*. Auto allows the tool to select an appropriate card type based on other constraints.

The Dest area contains Working and Protected sub areas.

Working sub area

- Port Num—Select the port number. Allowed values are Auto and 1 to 16. Auto allows the tool to select an appropriate port number based on other constraints.
- Port Rate-Reach—Select the desired PPM for this port, or set it to Auto to allow the tool to select an appropriate value.

Protected sub-area

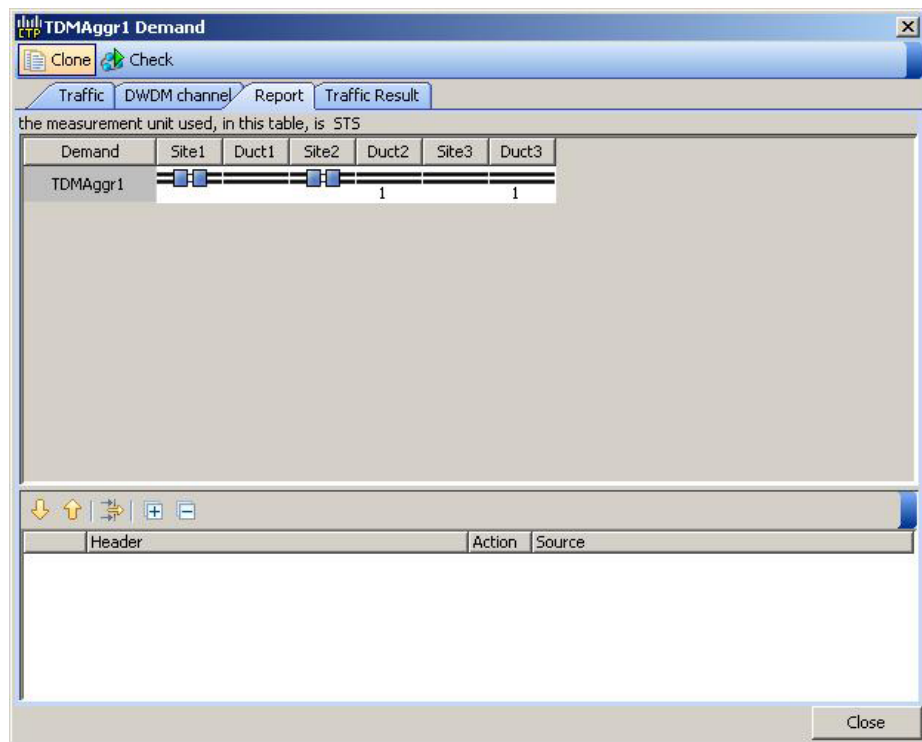
- Port Num—Select the port number. Allowed values are Auto and 1 to 16. Auto allows the tool to select an appropriate port number based on other constraints.
- Port Rate-Reach—Select the desired PPM for this port, or set it to Auto to allow the tool to select an appropriate value.

Step 11 Click **OK**.

Step 12 If you want to clone this demand, click the **Clone** button in the left corner of the screen. A new demand, which is a copy of this demand, is created and appears in the Project Explorer pane.

- Step 13** Click the **Check** tab on the left corner of the window to generate a report showing the circuit path in the WDM traffic channel and to check any over-allocation of bandwidth (Figure 2-30). The report shows, in a row, each of the sites on the subnet, and each span in between.

Figure 2-30 Circuit Path View in a TDM Aggregated Demand



- Step 14** To add a regeneration site, click the **Regeneration...** icon in the toolbar of the DWDM channel tab. The Regeneration Editor appears. The regeneration site can be created only at the trail level. For more information, see the “2.7.13 Creating a Regeneration Site” section on page 2-43.
- Step 15** Click **Close**. To edit circuits, see the “4.10 Editing a TDM Aggregated Demand” section on page 4-26.

2.7.13 Creating a Regeneration Site

Use the following procedure to create a regeneration site in the network.



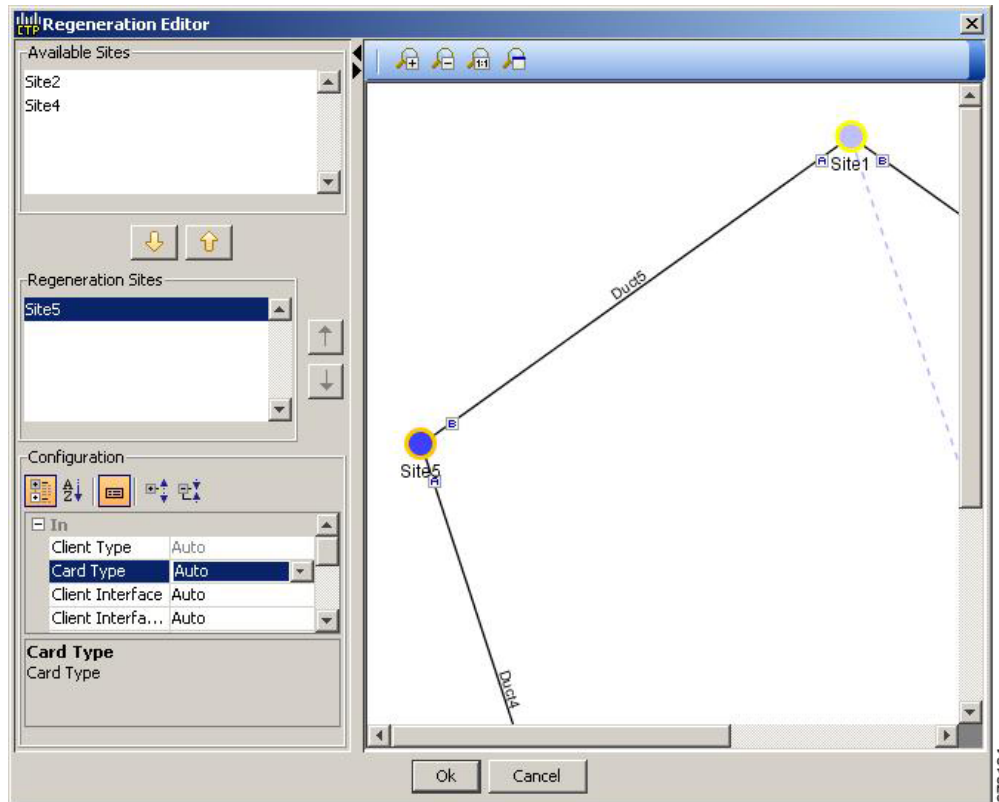
Note A regeneration site cannot be a site with the functionality as OLA, OSC, pass-through, or hub.



Note The **Regeneration...** icon is active only when you select a trail in the Demand Editor.

- Step 1** In the Demand Editor, click the **Regeneration...** icon in the toolbar. The Regeneration Editor appears, Figure 2-31. For more information about Cisco Transport Planner icons, see Appendix A, “GUI Information and Shortcuts”.

Figure 2-31 Regeneration Editor



- Step 2** In the Available Sites area, choose the site and click the down arrow icon. To remove a site added to the Regeneration Sites list, choose the site and click the up arrow icon.

**Note**

When adding more than one regeneration site to the path, ensure the regeneration sites are added in the correct sequence to avoid unfeasible routing. For example, if you create a point-to-point demand from site1 (source) to site 3 (destination), the sites available in the path are site 4 and site 5. Site 5 must be selected first, followed by site 4, because site 5 is closer to site 1.

- Step 3** To sort the regeneration sites in the list, use the up and down arrow icons located on the left.

- Step 4** If you chose a source or destination card for a regeneration site, choose the card type for the site from the drop-down list. The regeneration cards that are compatible with the source and destination cards are displayed in the interface.

**Note**

The OTU2_XP card has four modes. For more information on these modes, refer to the [“2.7.3 Configurations for OTU2_XP”](#) section on page 2-18.

- Step 5** Click **OK**.

**Note**

To allow different wavelengths to be used for regeneration, choose the Allow different wavelengths option in Net > Options > Traffic Mapping > System Release 9.0.

2.8 Viewing Circuits in a Network

You can view all the circuits that have been created in any of the Service Demands folders in the **Traffic** tab of the **Net1** tab.

The following columns are displayed:

- SA—Indicates the system alarms that affect the circuit. This indication is available only after the network is analysed.
- AL— Indicates the optical alarms that affect the circuit. This indication is available only after the network is analysed.
- F—Indicates if the demand will be needed in the future.
- Demand —Displays the name of the demand.
- Group—Displays the demand group to which the circuit belongs.
- Label —Displays the label of the circuit.
- TMSubnet—Displays the name of the traffic subnet in which the circuit is defined.
- SrvType— Displays the service type value.
- Sites—Lists the add/drop site.
- Card/TrunkType—Displays the card type and trunk type.
- Protection type— Displays the protection type of the demand.
- Wavelength —Displays the assigned wavelength.

You can edit the circuits for any demand by double-clicking the circuit or by choosing the circuit and clicking the **Edit** button in the toolbar.

Use any one of the following options to group and order the circuits:

- Type\Demand\Group— The circuits are first grouped and ordered by demand name. Each set of circuits with the same demand name is then ordered by the group name.
- SrvType\Type\group—The circuits are first grouped and ordered by service type. Each set of circuits with the same service type is then ordered by the group name.

**Note**

You can also select a set of fields in a particular order in the Group by dialog box to build a grouping rule to be applied to the table.

2.9 Analyzing the Network

After you have created the desired sites, fiber spans, and service demands, you must analyze the network to determine network performance. The network must be in the Design, Install, or Upgrade state before you can analyze it. Cisco Transport Planner automatically optimizes the design and summarizes the optical transmission performance. If there are problems with the design, Cisco Transport Planner lists the problems and descriptions in the Analyzer Messages pane.

Use the following procedure to analyze the network:

-
- Step 1** Click the **Mgmt Tree** tab, and click the network that you want to analyze.

Step 2 Click the Analyze Network icon in the toolbar. For more information about the Cisco Transport Planner icons, see [Appendix A, “GUI Information and Shortcuts.”](#) As an alternative, click **Analyze** in the Tasks Pane.

The Cisco Transport Planner analysis status bar indicates when the network analysis is complete.

Step 3 If any problems occur during the analysis, click the **Analyzer** tab to view the results on the Analyzer Messages pane. The Summary report appears. See the “[3.2.1 Viewing the Summary Report](#)” section on [page 3-2](#) for more information. Warning and error messages help you identify problems with your current design. For a list of all system messages, see [Appendix C, “System Messages.”](#)

Step 4 If necessary, resolve the problems listed in the Summary report. After you resolve the problems in the network, you can analyze the network again.



Note

You can return a Design-Analyzed network to the design state to make further changes by clicking the network icon in the Mgmt Tree and clicking **Design** in the Tasks Pane.

2.10 Managing the Network Design

After creating and analyzing a network design, you must prepare the design for installation at a customer site. After a network has been installed, you can reanalyze to correct any problems.

Network designs have several possible states:

- **Design**—The initial state for any new network design. You can add, delete, or change any aspect of the network design. In the Design state, no locks exist. After analyzing a design, you can put it back into the Design state to modify it by choosing Design in the Tasks Pane.
- **Design-Analyzed**—The state of the network design after you run the network analyzer. All reports are available and updated. You cannot change any aspect of the network design. You can modify the BoM, such as changing global discounts and spare parts. You can return to the Design state after analyzing the network by choosing Design in the Tasks Pane.
- **Copy**—A copy of a network. You can create a copy of a network in any state. A copy is useful for testing different design options. You can copy a network before or after analyzing it. A copied network inherits the set of project options defined in the original network. For more information, see the “[2.10.1 Creating a Copy of the Network](#)” section on [page 2-47](#).
- **Install**—A network is initially designed with theoretical fiber values (such as loss, length, etc.). When a network is installed in the field, you can move the network into the Install state so that you can enter and check the real fiber parameter values. You can create an Install network from a network in the Design-Analyzed or Upgrade-Analyzed state. A network in the Install state inherits the set of project options defined in the analyzed network. All sites in an Install network are locked. You cannot modify any aspect of the network design except the span parameters and (on unlocked sites) amplifiers. You can, however, modify the BoM. All routed circuits are fixed, and cannot be changed while in this state. For more information, see the “[2.10.2 Creating a Network in the Install State](#)” section on [page 2-47](#).
- **Install-Analyzed**—The state of the Install network design after you run the network analyzer. All reports are available and updated. Cisco Transport Planner locks all sites, spans, demands, and equipment when a network is in the Install-Analyzed state.

- **Upgrade**—During network design, you define a number of the channels to be implemented at the present time and a number of channels to be implemented in the future (forecast). After installing the network, you might decide to implement the forecast circuits. To do this, you create an Upgrade network and then select the forecast or traffic demand services that you want to implement. You can create an Upgrade network from a network in the Design-Analyzed or Install-Analyzed state. You can unlock specified parameters to alter the design to include forecasted channels and traffic demands. A network in the Upgrade state inherits the set of project options defined in the analyzed network. For more information, see the “[2.10.3 Creating an Upgrade Network](#)” section on page 2-48.
- **Upgrade-Analyzed**—The state of the Upgrade network design after you run the network analyzer. All reports are available and updated. Cisco Transport Planner locks all sites, spans, demands, and equipment when a network is in the Upgrade state.

To complete the procedures in this section, you must have a project open and the network(s) loaded. See the “[1.4.1 Opening a Project](#)” section on page 1-15 and the “[1.4.2 Loading and Unloading Networks](#)” section on page 1-16.

2.10.1 Creating a Copy of the Network

To create a copy of a network in any state, right-click the network and choose **Copy** from the shortcut menu. A new copy appears in the Network Mgmt Tree tab.

2.10.2 Creating a Network in the Install State

Use the following procedure to create a network in the Install state:

- Step 1** If the network is not analyzed, complete the “[2.9 Analyzing the Network](#)” section on page 2-45.
- Step 2** Click the **Mgmt Tree** tab.
- Step 3** Right-click the network and choose **Install** from the shortcut menu. A new network appears in the Mgmt Tree in the Install state. All results from the analyzed network are imported into the Install network and are placed in the Locked mode.
- Step 4** Make the necessary changes to the Install network. You can edit the following fiber parameters: fiber loss value, fiber CD, fiber PMD, and fiber length. See the “[4.11 Editing Fiber Span, Pair, and Fiber Parameters](#)” section on page 4-31. Cisco Transport Planner also allows you to unlock site parameters for modification. To change site parameters, see the “[4.3 Editing Site Parameters](#)” section on page 4-2.
- Step 5** In the Mgmt Tree view, click the **Analyze Network** icon in the toolbar. For more information about the Cisco Transport Planner icons, see [Appendix A, “GUI Information and Shortcuts.”](#) The Transport Planner Analyzer status window appears to indicate the progress. As an alternative, click **Analyze** in the Tasks Pane. The Cisco Transport Planner analysis status bar indicates when the network analysis is complete. The network now appears in the Install-Analyzed state.



Note If you have changed parameters that are inconsistent with the present network layout (for example, if you set an output tilt value that the amplifier cannot reach), during network analysis an error message on the Analyzer Messages pane identifies which parameter is causing the problem. Warning and error messages help you identify problems with your current design. For a list of all system messages, see [Appendix C, “System Messages.”](#)

- Step 6** When you have analyzed the network and are satisfied with the results, import the new generated installation parameters to each site of the network. For more information, see the “[3.2.2 Saving the NE Update File](#)” section on page 3-3.

2.10.3 Creating an Upgrade Network

Use the following procedure to put a network in the Upgrade state:

- Step 1** If the network is not analyzed, complete [Analyzing the Network, page 45](#).
- Step 2** Click the **Mgmt Tree** tab.
- Step 3** Right-click the analyzed network and choose **Upgrade** from the shortcut menu. A new Upgrade network appears in the Mgmt Tree tab. All results from the analyzed network are imported into the Upgrade network.
- Step 4** Make the necessary changes to the Upgrade network. For more information, see the [Editing Fiber Span, Pair, and Fiber Parameters, page 31](#) and the [Editing Site Parameters, page 2](#).
- Step 5** In the Mgmt Tree view, click the **Analyze Network** icon in the toolbar. For more information about Cisco Transport Planner icons, see [Appendix A, “GUI Information and Shortcuts.”](#) The Transport Planner Analyzer status window appears to indicate the progress. As an alternative, click **Analyze** in the Tasks pane in any view. The Cisco Transport Planner analysis status bar indicates when the network analysis is complete. The network now appears in the Upgrade-Analyzed state.



- Note** If you have changed parameters that are inconsistent with the present network layout (for example, if you set an output tilt value that the amplifier cannot reach), during network analysis an error message on the Analyzer Messages pane identifies which parameter is causing the problem. Warning and error messages can help you identify problems with your current design. For a list of all system messages, see [Appendix C, “System Messages.”](#)

In an Upgrade network, you can perform the following tasks:

- Modify the fiber span properties (such as length, dispersion, PMD coefficient, excess losses, and aging).
- Add or delete traffic
- Convert forecasted traffic to present traffic
- Finalize ROADM traffic to present traffic
- Modify the type of a node
- Force the presence or the absence of a card or a module (this includes amplifiers, OSC modules, OADM cards, and DCU modules)

In an Upgrade network, you can force certain installation parameters:

- Amplifier per-channel output power setpoint
- Amplifier output tilt setpoint
- OADM card aggregate output power setpoint

- Full multiplexer/demultiplexer or ROADM output power setpoint

You cannot change the following parameters when in Upgrade state:

- Node input channel fail threshold
- Node OSC channel fail threshold
- Pre-amplifier input power threshold
- OADM card aggregate input power setpoint
- Full muxponder/demuxponder or ROADM input power setpoint
- Channel drop power

When upgrading a network that has a point-to-point demand, you can:

- Move Future circuits to become Present. This move can be done without unlocking the circuit.
- Add new, present, or future point-to-point services to the existing demand.
- Delete any present or future channel originally defined in the baseline network.
- Change any unlocked point-to-point circuit or unlocked point-to-point service demand parameter.

When upgrading a network that has an any-to-any demand, you can:

- Move any of the Any-to-Any (future) services to become Present. This move can be done without unlocking the circuit.
- Create a new Any-to-Any demand on an already existing Any-to-Any group.
- Create a new Any-to-Any group.
- Delete an existing Any-to-Any demand from an Any-to-Any group.
- Delete an Any-to-Any group with all of its Any-to-Any demands.

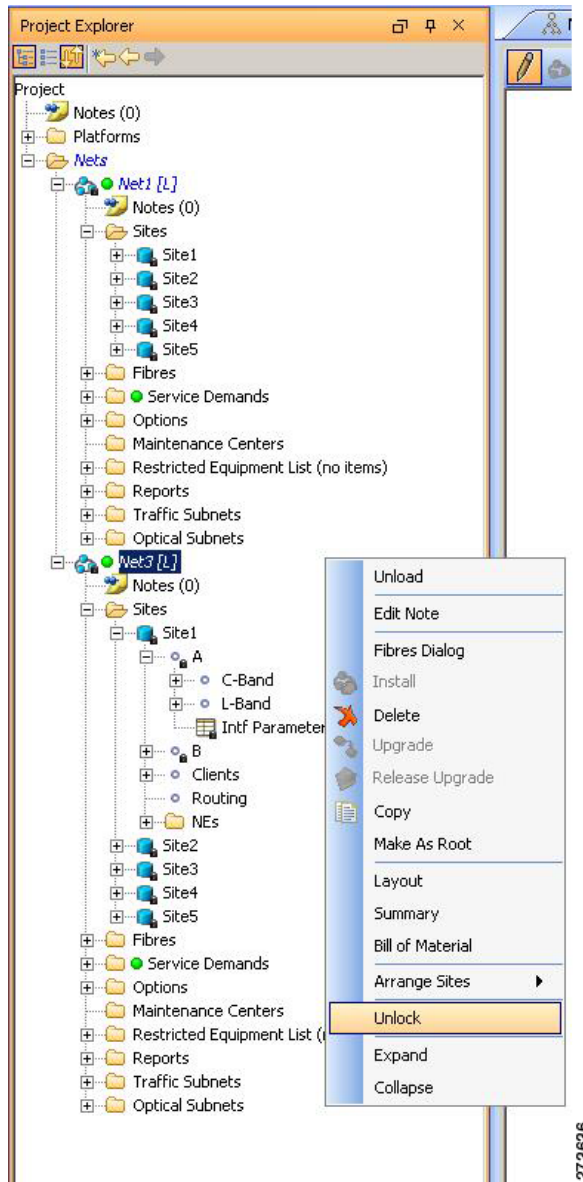
**Note**

Any-to-Any services that have been moved to Present will be represented as Point-to-Point services.

2.10.4 Unlocking Parameters in the Network Design

The Locked state occurs when no value is set for a parameter and Auto option is selected. During network analysis, Cisco Transport Planner assigns a value for each parameter set with Auto and puts them in the Locked state. The Locked state indicates that the next time the network is analyzed, the analyzer cannot change the value. Locking a site forces the presence or absence of all preamplifiers, boosters, add/drop filters, and DCU cards required by the site/network as a result of running the analyzer previously. Locked elements are indicated by a closed padlock icon in the Project Explorer. For more information on the Auto, forced, and locked states, see the [“1.1.6 Auto, Forced, and Locked Parameters” section on page 1-12](#).

Figure 2-32 Unlocking Network in the Project Explorer View



To unlock network components, right-click the desired element in Upgrade or Install mode in the Project Explorer area and choose **Unlock** from the shortcut menu (Figure 2-32). You can unlock at the network level or the site level or the element level. Unlocking items at higher level unlocks all elements under that level.

2.10.5 Creating a JPEG of the Network Design

Use the following procedure to create a snapshot of your network design in JPEG format:

Step 1 Click the *NtView Name* tab.

- Step 2** Complete the “[4.16 Arranging Sites](#)” section on page 4-63 as necessary so that the sites in the network appear in the tab in the desired arrangement.
- Step 3** Click the Save network view image icon in the toolbar.
- Step 4** In the Save network view image dialog box, navigate to the desired directory.
- Step 5** Enter the file name in the File Name field and click **Save**.
-

2.10.6 Upgrading to CTP Software Release 9.0

Use the following procedures to upgrade a release to CTP Software Release 9.0:



Note

- CTP Release 9.0 supports upgrading CTP Software Release 7.0 and later.
 - At one time, you can upgrade a software release only to its next-highest supported release. For example, Release 7.0 can be upgraded to Release 8.0 but not to Release 8.5.
-

Step 1 From the File menu, click **Open** to load the saved CTP project (Release 7.0 and later).

Step 2 Right-click on the network loaded in the Project Explorer and choose **Release Upgrade**.

CTP automatically creates a copy of the initially loaded network and updates the system release to the next highest release. The newly created copy is moved into the Upgrade administrative state.

Step 3 Repeat Step 2 until the release is upgraded to Release 9.0.



Note

The tool allows you to manually enter the details of a deployed network even if the Cisco Transport Planner design file is not available. You can perform a release upgrade only on a network that has been analyzed.

2.11 Generating a BoM


You can generate a BoM when a network is in the Install or Upgrade state, or after you have successfully analyzed your network design. The price database selected during project creation is used to generate the BoM.

To complete the procedures in this section, you must have a project open and the network(s) loaded. See the “[1.4.1 Opening a Project](#)” section on page 1-15 and the “[1.4.2 Loading and Unloading Networks](#)” section on page 1-16.

2.11.1 Viewing BoM Report Totals

Use the following procedure to view the BoM report totals:

Step 1 Click the **Mgmt Tree** tab and click the network.

- Step 2** In the Tasks Pane, click **Bill of Material**. The Bill of Material tab appears. As an alternative, you can access this report by choosing **Bill of Materials** from the Reports folder in the Project Explorer tree.
- The upper section of the BoM tab (in the Net view, Site view, and Spare subtabs) displays the following information:
- **BoM total discounted**—Displays the price for the overall network (without spare parts) for each item in the BoM. If Use global discount is checked, the total includes the discount from the Global discount percentage field.
 - **Spare total discounted**—Displays the price for all of the recommended spare parts in all of the maintenance centers for the overall network. It is the sum of each spare item using the discounted price. The total appears after you check the Spare Part Report check box.
 - **BoM + Spare total discounted**—Displays the sum of the BoM total discounted price and spare total discounted price.
 - **Price List**—Displays the name of the price list database selected for the project.
 - **Price List last update**—Displays the date that the selected price list was last updated.
 - **Currency**—Displays the value of the currency used for each of the price values as specified within the selected price list database.
- Step 3** To use the Multishelf Management Integrated Kit bundle when generating the BoM instead of the single items, check **Use MSM bundle**.
- Step 4** Check **Spare Part Report** to include the spare parts in the report totals.
-  **Note** You can only check the Spare Part Report check box if the network is in Design mode.
- Step 5** The Global discount percentage field shows the percentage from the Global Discount Percentage option in the Default Project Options window. To change the global discount for the entire network, check **Use global discount** and enter a new global discount in the form of a percentage in the **Global discount percentage** field. The global discount is applied to all components in the BoM and will overwrite any discount specified in the Global Price List.

2.11.2 Generating a Network BoM

Use the following procedure to generate a BoM for the network:

- Step 1** Click the **Mgmt Tree** tab and click the network.
- Step 2** In the Tasks Pane, click **Bill of Material**. The Bill of Material tab ([Figure 2-33](#)) appears. The Net View subtab is selected by default. Items that are not found appear in yellow in the BOM.

Figure 2-33 Bill of Material Tab, Net View Subtab

Networks Mgmt Tree | NtView Net1 x | NtReports Net1 x

Details

April 26, 2006 at 11:11:30

Export | Messages

BoM total discounted: 224,880.00
Spare total discounted: 0.00
BoM + Spare total discounted: 224,880.00

Price List: Master Price DB
Price List last update: Wed Apr 26 11:07:42 CDT 2006 (CCO)
Currency: Usd

Use MSM Bundle Use Spare Parts Use Global Discount Global Discount (%) 0.0

BoM | Spare

Product ID	Description	Quan...	Unit price	Unit Disco...	Total price	Dis
15454-EAP-MF	Ethernet Adapater Panel Mechanical Frame	2	400.00	0.0 %	800.00	
15454-AIR-RAMP=	ONS 15454 Air Ramp / Baffle for the ANSI Cha...	2	120.00	0.0 %	240.00	
15454-FBR-STRG=	Fiber Storage Shelf	2	800.00	0.0 %	1,600.00	
15454-FTA3-T	Shelf Fan Tray Assembly, ANSI, 15454, HPCFM, ...	2	500.00	0.0 %	1,000.00	
15454-SA-HD	15454 SA HD NEBS3 ANSI w/ RCA and Ship Kit	2	2,000.00	0.0 %	4,000.00	
15454-EAP	Ethernet Adapater Panel	4	550.00	0.0 %	2,200.00	
15454-BLANK=	Empty slot Filler Panel	18	225.00	0.0 %	4,050.00	
15454-MS-ISC-100T	MultiShelf Management Integrated Switch Card	4	10,000.00	0.0 %	40,000.00	
15454-TCC2P-K9	Timing Communications Control Two Plus, I-Temp	4	3,000.00	0.0 %	12,000.00	
15454-R7.0.0SWK9	Rel. 7.0.0 Feature Pkg., CD, Right To Use Lice...	2	1,995.00	0.0 %	3,990.00	
SF15454-R7.0.0K9	Rel. 7.0.0 SW, Pre-loaded on TCC	4	0.00	0.0 %	0.00	
15454-OSC-CSM=	ONS 15454 Combiner and Separator with OSC ...	4	6,500.00	0.0 %	26,000.00	
15454-AD-1C-58.1=	ONS 15454 OADM - 1 Chn - 100GHz - 1558.17	2	9,500.00	0.0 %	19,000.00	
15454-10E-L1-C=	15454 10G Multi-Rate Transponder- EFEC- Full ...	2	50,000.00	0.0 %	100,000.00	
ONS-XC-10G-S1	XFP - OC192/STM64/10GF - 1310 NR - SMLC	2	4,800.00	0.0 %	9,600.00	

Net view | Site view

Summary | **Bill Of Material** x

151993

Table 2-4 describes the Net view subtab columns. See the “2.11.1 Viewing BoM Report Totals” section on page 2-51 for a description of the data, check boxes, and fields at the top of the window.

Table 2-4 BoM Net View Columns

Column Label	Description
Product ID	Displays the ordering code used to order the BoM from Cisco.
Description	Displays a description of the product.
Quantity	Displays the number of specific products in the BoM.
Unit price	Displays the price for each unit. If the price does not appear, Invalid will display. This occurs when the price list reports “NaN” (Not a Number) for the item because the price list has never been updated. Invalid items appear in the list in red. Items that have not been updated from CCO appear in yellow.
Unit Discount	Displays the per-unit discount amount that you assigned in the Global Discount Percentage field. If you leave the field blank, the field displays the default value from the Price List database.
Total price	Displays the total price of the products before applying the discount.
Discounted Total Price	Displays the total price of the products after applying the discount.
Site #	Displays the number of products to be assigned to a particular site. The number of Site columns is the same as the number of sites in the network.

Step 3 To close the Bill of Material report, click the **X** in the upper right corner of the Bill of Material tab.

2.11.3 Generating a Site BoM

A site BoM lists all of the hardware and software parts required for the system to work as designed at a given site. Use the following procedure to generate a BoM for a site:

Step 1 Click the **NtView Name** tab and click the site.

Step 2 In the Tasks Pane, click **Bill of Material**. The Site view subtab is selected by default (Figure 2-34). Items that do not appear in the price list appear in red.

Figure 2-34 Bill of Material Tab, Site View Subtab

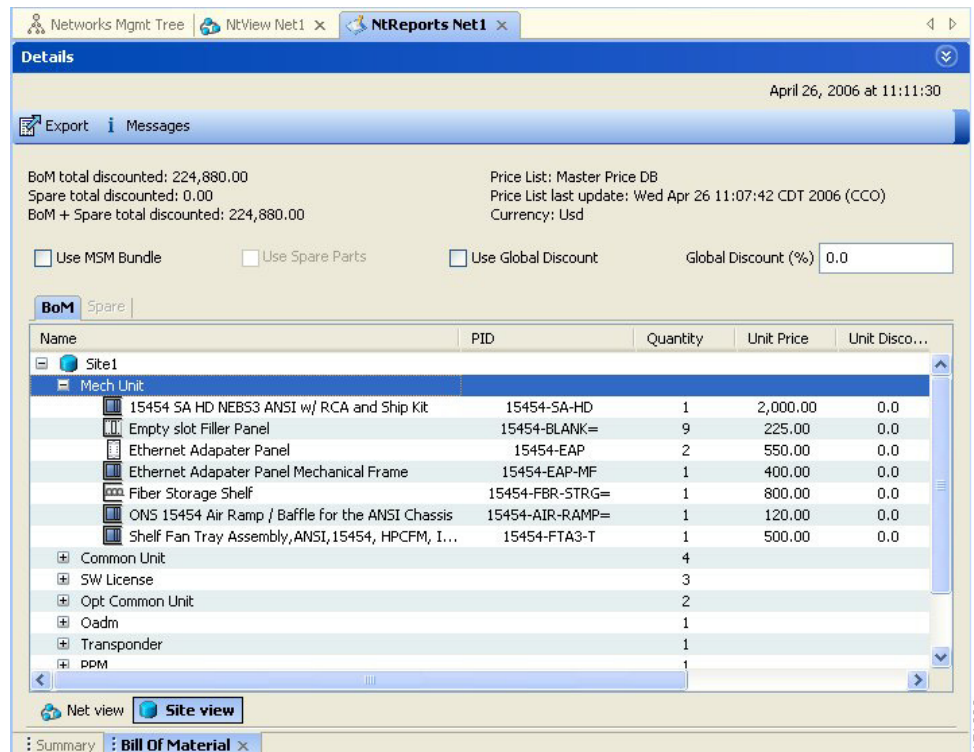


Table 2-5 describes the Site view subtab columns. See the “2.11.1 Viewing BoM Report Totals” section on page 2-51 for a description of the data, check boxes, and fields at the top of the window.

Table 2-5 BoM Site View Columns

Column Label	Description
Name	Displays the site name. Click the plus (+) sign to expand the site and display the categories. Click the plus (+) sign to expand each category to view the items in the BoM.
Product ID	Displays the ordering code used to order the BoM from Cisco.
Quantity	Displays the number of that specific item in the BoM.

Table 2-5 *BoM Site View Columns (continued)*

Column Label	Description
Unit price	Displays the price for each unit. If the price does not appear, Invalid will display. This occurs when the price list reports “NaN” (Not a Number) for the item because the price list has never been updated. Invalid items appear in the list in red. Items that have not been updated from CCO appear in yellow.
Unit Discount	Displays the per-unit discount amount that you assigned in the Global Discount Percentage field. If you leave the field blank, the field displays the default value from the Price List database.
Total Price	Displays the total price of the products before applying the discount.
Discounted Total Price	Displays the total price of the products after applying the discount.

Step 3 To close the Bill of Material report, click the **X** in the upper-right corner of the Bill of Material tab.

2.11.4 Generating a Spare Parts Report

After you generate the BoM, use the following procedure to determine the spare parts required by the network. If the network is in the Upgrade state, the report includes the parts required to support the implemented services and the new additional present services. To generate a spare parts report, you must associate a site with a maintenance center before network analysis. For more information, see the [“4.3 Editing Site Parameters” section on page 4-2](#).

Step 1 Click the **Mgmt Tree** tab and click the network.

Step 2 In the Tasks Pane, click **Bill of Material**. Click the **Spare** subtab ([Figure 2-35](#)).

Figure 2-35 Bill of Material Tab, Spare Subtab

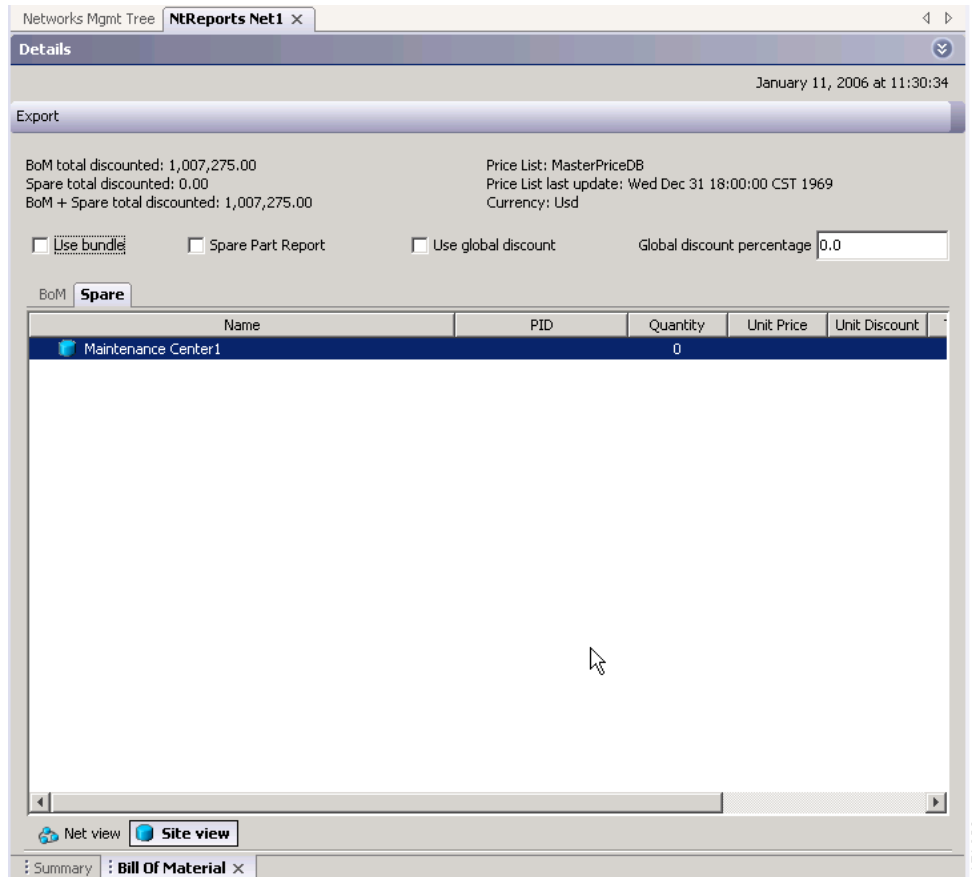


Table 2-6 describes the Spare subtab columns. See the “2.11.1 Viewing BoM Report Totals” section on page 2-51 for a description of the data, check boxes, and fields at the top of the window.

Table 2-6 BoM Spare Subtab Columns

Column Label	Description
Name	Displays the name of the item at the site. Right-click the maintenance center and choose Expand All from the shortcut menu to view all spare parts.
Product ID	Displays the ordering code used to order the BoM from Cisco.
Quantity	Displays the number of specific items in the BoM.
Unit price	Displays the price for each unit. If the price does not appear, Invalid will display. This occurs when the price list reports “NaN” (Not a Number) for the item because the price list has never been updated. Invalid items appear in the list in red. Items that have not been updated from CCO appear in yellow.
Unit Discount	Displays the per-unit discount amount that you assigned in the Global Discount Percentage field. If you leave the field blank, the field displays the default value from the Price List database.
Total Price	Displays the total price of the parts before applying the discount.
Discounted Total Price	Displays the total price of the parts after applying the discount.

- Step 3** To close the Bill of Material report, click the **X** in the upper right corner of the Bill of Material tab.
-

2.11.5 Exporting a BoM

Use the following procedure to export the BoM to an external file in XML, Excel spreadsheet, HTML, or text format:

-
- Step 1** Click the **Mgmt Tree** tab and click the network.
- Step 2** In the Tasks Pane, click **Bill of Material**. The Bill of Material tab appears.
- Step 3** Click **Export**. The BoM export dialog box appears.
- Step 4** In the BoM export dialog box, type the name of the file, choose the file type (**.xls** and **.html**) from the drop-down list, and navigate to the desired folder. Click **Save**.
-

2.12 Managing the Price List

A price list is defined for each project and is used to generate a BoM. Cisco Transport Planner can manage multiple price lists. You can even change a project price list after a project has been established. The Master Price list is the Global Price List in US dollars. You can download new price lists from Cisco Connection Online (CCO).

Only the selected price value is saved with a project; the actual price database is not saved with the project. When opening a saved project (for example, a project received from another designer), the associated price database might not be available. If this is the case, Cisco Transport Planner notifies you that the Master Price list will be used.

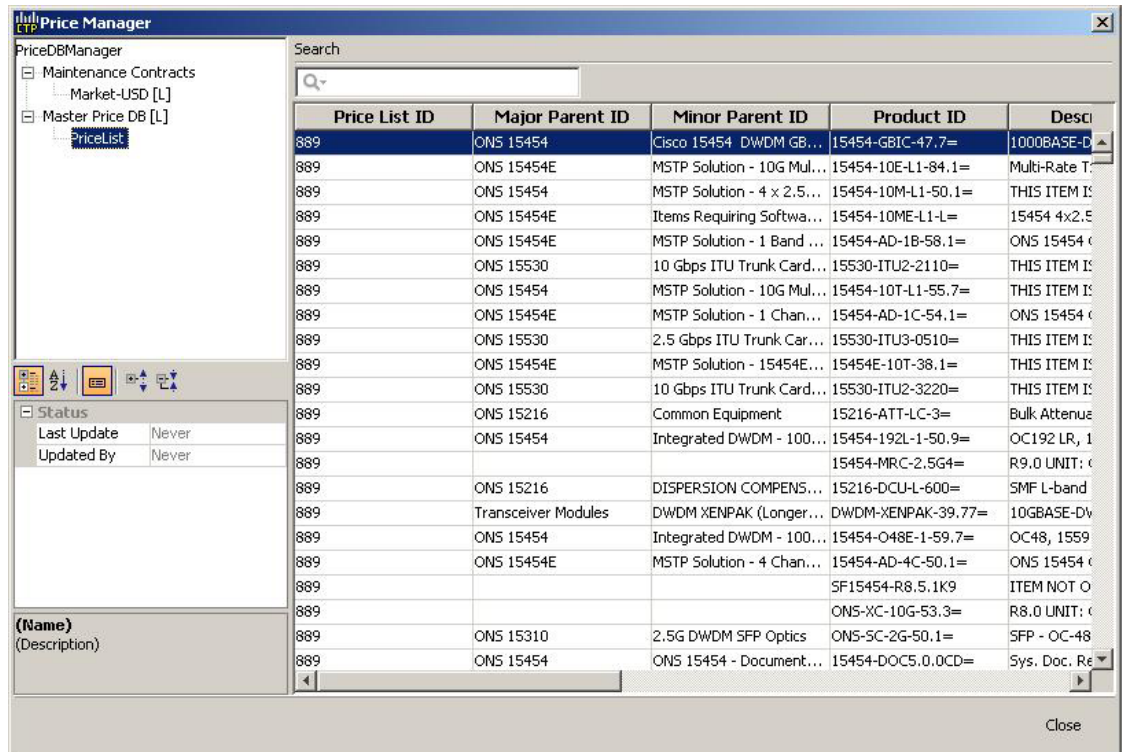
To save memory, Cisco Transport Planner automatically loads only the price list selected for the current project.

2.12.1 Creating a New Price List

Use the following procedure to download a price list from CCO. You can download price lists from CCO if no projects are currently open.

-
- Step 1** If a project is open, close the project. See the “[1.4.4 Closing a Project](#)” section on page 1-16.
- Step 2** From the Tools menu, choose **Price List Mgmt**. The Price Manager dialog box appears ([Figure 2-36](#)).

Figure 2-36 Price Manager Dialog Box



- Step 3** In the Price Manager dialog box, right click **PriceDBManager** and choose **New Price DB** from the shortcut menu.
- Step 4** In the Create a New Price DB dialog box, enter the price list name.
- Step 5** From the drop-down list, choose the desired CCO price list.
- Step 6** Click **OK**.
- Step 7** Click **OK** to update from CCO.
- Step 8** In the CCO User Name/Password dialog box, type your user name and password, and click **OK**. Cisco Transport Planner downloads the CCO price list.
- Step 9** When the update is complete, click **OK** to close the confirmation dialog box. The new price list appears in the PriceDBManager tree.
- Step 10** Click **Close** to close the Price Manager dialog box.

2.12.2 Viewing a Price List

Use the following procedure to view and filter a price list:

- Step 1** From the Tools menu, choose **Price List Mgmt**. The Price Manager dialog box appears (Figure 2-36 on page 2-58).

The PriceDB Manager tree lists all of the created price lists. To save memory, Cisco Transport Planner automatically loads only the price list selected for the current project (unless the user requests otherwise). An L indicates that the price list is loaded in memory and is available. A U indicates that a price list is currently not loaded in memory and is not available.

Step 2 To load or unload a price list, right-click a price list and choose **Load** or **Unload** from the shortcut menu.

Step 3 Click **PriceList** under the desired price list identifier in the PriceDBManager tree. The list displays in the right pane of the Price Manager dialog box. The properties of the price list appear in the bottom left corner of the Price Manager dialog box:

- Last update—Indicates the date of the last download from CCO for this price list. If Never appears, this indicates that the user created a price list without downloading from CCO.
- Updated by—Identifies the way in which the price list was updated.

The price list displays the following columns:

- Price List ID—For internal use.
- Major Parent ID—Lists the platform.
- Minor Parent ID—Lists the equipment type.
- Product ID—Identifies the ordering code for the specific unit.
- Description—Provides detail about the item.
- Service Category—For future use.
- List Price—Indicates the price of the item. If NaN (Not a Number) appears in the field, the list has not been updated.
- Major ID—For internal use.
- Minor ID— For internal use.
- Update Status—Identifies how the last update was made to an item:
 - None—Indicates that the price list has never been updated.
 - local_file—Indicates that the price list has been updated from a local file.
 - cco—Indicates that the price list has been updated from CCO.
 - user—Indicates that the price list has been manually updated by the user who directly edited the price list. The user can modify the Discount field.
- Discount—If a discount applies, identifies the discount percentage. To modify this field, enter the new percentage.

Step 4 To search for a specific item in a price list, type the desired item in the Search field at the top of the list. As you type, Cisco Transport Planner filters the list items to match your search entry. To choose Search options, click the Search Tool icon to the left of the Search field and choose one of the following:

- Column name—Searches only the specified column for the search string. The All option searches all columns.
- Case sensitive—Matches the case of the search string.
- Case insensitive—Disregards the case of the search string.
- Match from start—Searches only for the search string if it appears at the beginning of column text.
- Match any where—Searches for the search string if it appears anywhere in the price list.

Step 5 To sort the items in the price list, click on a column to sort by that column.

- Step 6** Click **Close** to close the Price Manager dialog box.
-

2.12.3 Loading and Unloading Price Lists

To save memory, Cisco Transport Planner automatically loads only the price list selected for the current project. An “L” by a price list in the Price Manager dialog box indicates that the price list is loaded; a “U” in the Price Manager dialog box indicates that the price list is not loaded. Use the following procedure to load or unload price lists in Cisco Transport Planner:

- Step 1** From the Tools menu, choose **Price List Mgmt.** The Price Manager dialog box appears ([Figure 2-36 on page 2-58](#)).
- Step 2** Right-click the price list and choose **Load** or **Unload** from the shortcut menu.
-

2.12.4 Updating a Price List from CCO

Use the following procedure to update a specified price list from CCO or from a local file. You can also update all price lists, even the lists that are not currently loaded. You can update a price lists from CCO if no projects are currently open.

- Step 1** If a project is open, close the project. See the “[1.4.4 Closing a Project](#)” section on page 1-16.
- Step 2** From the Tools menu, choose **Price List Mgmt.** The Price Manager dialog box appears ([Figure 2-36 on page 2-58](#)).
- Step 3** Right-click the desired price list identifier in the PriceDBManager tree and choose **Expand** from the shortcut menu.
- Step 4** Right-click the desired price list in the expanded tree and choose **UpdateFromCCO** from the shortcut menu.
- Step 5** In the Update from CCO dialog box, choose **Update single price list** to download data for the specified list or **Update all price lists** to download the latest data for all price lists.
- Step 6** In the CCO User Name/Password dialog box, type your user name and password and click **OK**. Cisco Transport Planner downloads the price list.
- Step 7** When the update is complete, click **OK** to close the confirmation dialog box.
- Step 8** Click **Close** to close the Price Manager dialog box.
-

2.12.5 Copying a Price List

Use the following procedure to create a new price list by copying from an existing one. The new price list will have all of the attributes and values of the original price list (such as Updated By, Last Update, unit price, discounts, and so on). You can copy a price list if no projects are currently open.

-
- Step 1** If a project is open, close the project. See the “[1.4.4 Closing a Project](#)” section on page 1-16.
 - Step 2** From the Tools menu, choose **Price List Mgmt**. The Price Manager dialog box appears ([Figure 2-36 on page 2-58](#)).
 - Step 3** Right-click the desired price list in the PriceDBManager tree and choose **Copy** from the shortcut menu.
 - Step 4** Type the name for the new price list and click **Ok**. The new price list appears in the PriceDBManager tree.
 - Step 5** Click **Close** to close the Price Manager dialog box.
-

2.12.6 Deleting a Price List

Use the following procedure to delete a price list. You cannot delete the Master Price List or a price list that is in use by a project. You can delete a price list if no projects are currently open.

-
- Step 1** If a project is open, close the project. See the “[1.4.4 Closing a Project](#)” section on page 1-16.
 - Step 2** From the Tools menu, choose **Price List Mgmt**. The Price Manager dialog box appears ([Figure 2-36 on page 2-58](#)).
 - Step 3** Right-click the desired price list in the PriceDBManager tree and choose **Delete** from the shortcut menu.
 - Step 4** Click **Close** to close the Price Manager dialog box.
-

2.12.7 Viewing Maintenance Contracts

Use the following procedure to view maintenance contracts:

-
- Step 1** From the Tools menu, choose **Price List Mgmt**. The Price Manager dialog box appears ([Figure 2-36 on page 2-58](#)).
 - Step 2** Right-click **Maintenance Contracts** and choose **Expand** from the shortcut menu.
 - Step 3** Click **ContractsList**. The Contract PID column lists the service contract identifiers for the hardware and software parts used by Cisco Transport Planner. The Contract Category column describes the service programs.
 - Step 4** Click **MapPidsContracts**. The PID column lists the product identifiers. The Contracts column lists the service contract identifier.
 - Step 5** Click **Close** to close the Price Manager dialog box.
-

