



# Multicast Simulation

WAE Design supports source-specific multicast (SSM), which is a method of delivering multicast packets to receivers only from a specified source address that is requested by the receiver. By limiting the source, SSM reduces resource requirements and improves security.

This section contains the following topics:

- [SSM Parameters](#) , on page 1
- [Discovered Versus Simulated Multicast Flows](#), on page 1
- [Multicast Demands](#), on page 4
- [Creating Multicast Flows](#), on page 7
- [Creating Demands for Multicast Flows](#), on page 9
- [Toggling Multicast Flow Destinations to On and Off](#), on page 9

## SSM Parameters

SSM is specified by an (S,G) parameter per multicast flow. The (S,G) pair is labeled using a dot-decimal notation similar to IP addresses (for example, 1.1.1.1, 2.2.2.2). Each (S,G) pair is the name of a multicast flow, and each flow is listed in the Multicast Flows table.

## Discovered Versus Simulated Multicast Flows

How you work with multicast flows within WAE Design differs depending on whether the multicast flow was discovered by WAE or whether you are simulating it ([Table 1: Discovered Versus Simulated Multicast Flows](#) , on page 1).

**Table 1: Discovered Versus Simulated Multicast Flows**

	<b>Discovered Multicast Flow</b>	<b>Simulated Multicast Flow</b>
Creation	WAE discovers multicast flows—(S,G) pairs—and multicast traffic is derived from the Multicast Flow Traffic table (accessed from the Multicast Flows tab after choosing <b>Edit &gt; Traffic</b> ).	First, manually create the multicast flow, defining both the source (S) and the destinations (G). Next, create a demand that links the source to these multicast destinations, allowing the routing to be simulated through the network.

	<b>Discovered Multicast Flow</b>	<b>Simulated Multicast Flow</b>
Hops	Each discovered multicast flow includes multicast flow hops, which are node-interface combinations through which the multicast path flows. The Multicast Demand initializer uses multicast flow hops to determine multicast sources and destinations.	When you create a demand, it determines the path to take.
External hops	WAE discovers multicast flow hops on interfaces that are external to the plan file. These are interfaces from a plan node to an external node, or from an external node to a plan node. The Multicast Demand initializer uses multicast flow external hops to determine multicast sources and destinations.	When you create a demand, it determines the path to take, but multicast external flow hops are not identified.
Destinations	WAE does not identify a list of multicast destinations for each flow. The Multicast Demand initializer generates destinations from the Multicast Flow Hops and Multicast Flow External Hops tables.	Specify destinations (nodes, interfaces, external ASes, or external endpoints) when you create multicast flows. When creating multicast demands, specify these as multicast destinations.
Applicable tables	<ul style="list-style-type: none"> <li>• Multicast Flows</li> <li>• Multicast Flow Hops</li> <li>• Multicast Flow External Hops</li> <li>• Multicast Flow Traffic (accessed from the Multicast Flows tab after choosing <b>Edit &gt; Traffic</b>)</li> </ul>	<ul style="list-style-type: none"> <li>• Multicast Flows</li> <li>• Multicast Flow Destinations</li> <li>• Demands</li> </ul>
Plot displays	<ul style="list-style-type: none"> <li>• Selecting a multicast flow from the Multicast Flow table highlights a pink path on the plot (<a href="#">Figure 1: Multicast Flows, on page 3</a>).</li> <li>• Selecting a multicast flow hop from the Multicast Flow Hops table highlights a pink path on the plot (<a href="#">Figure 2: Multicast Flow Hops, on page 3</a>).</li> </ul>	<ul style="list-style-type: none"> <li>• Selecting multicast demands from the Demands table highlights the multicast path in blue on the plot and labels the source as A and the destinations as Z.</li> <li>• Selecting multicast flow destinations from the Multicast Flow Destinations table labels the final destinations with a Z in the plot.</li> </ul>

Figure 1: Multicast Flows

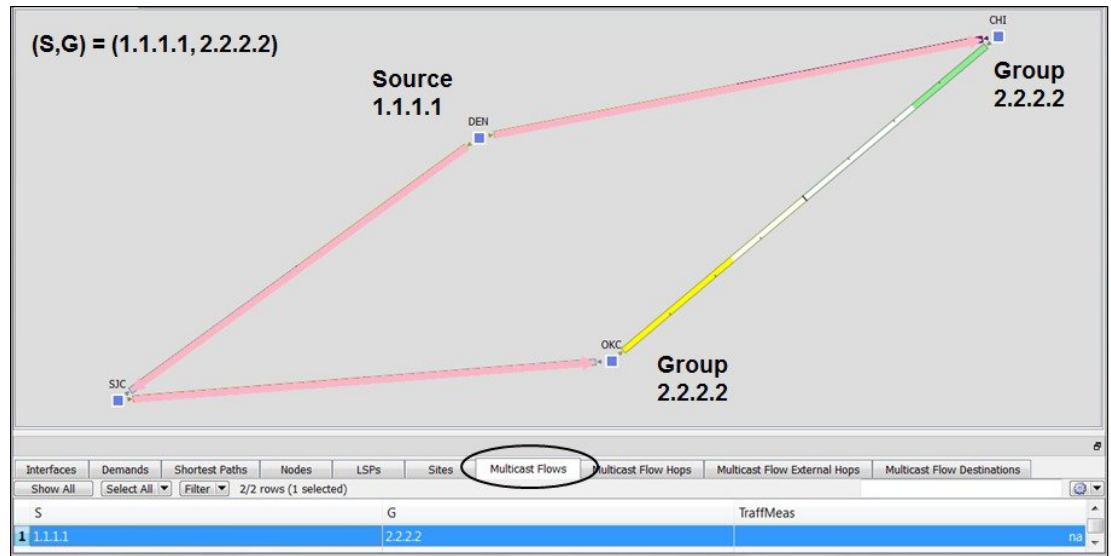
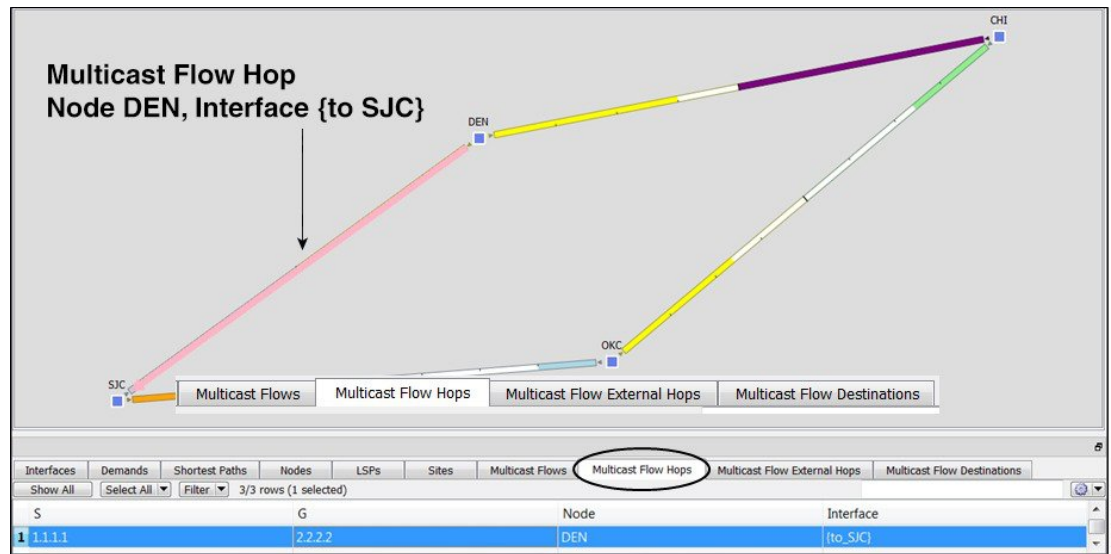


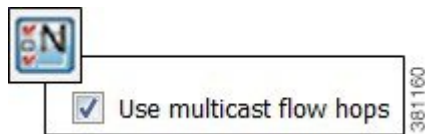
Figure 2: Multicast Flow Hops



## Global Multicast Simulations

### Flow Hops

If a plan file contains multicast information, it includes the current hops taken by multicast flows. You can specify that WAE Design multicast simulations should follow these flow hops if possible. This is useful, for example, when calculating incremental routing changes on the current network state, such as those caused by a failure. For planning purposes, when the current state is not relevant, you can change this behavior to disregard the multicast flow hops.

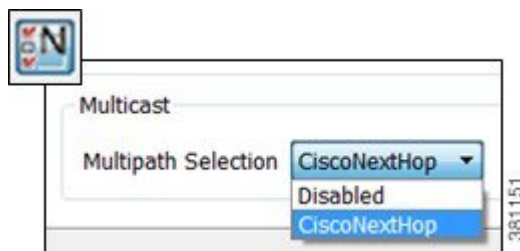


WAE Design uses the network state in its multicast simulation. You can set simulations to take into account multicast flow hops, as follows.

- 
- Step 1** Choose **Edit > Network Options** or click the **Network Options** icon in the Visualization toolbar.
  - Step 2** Click the **Simulation** tab.
  - Step 3** To use or disregard multicast flow hops in simulation, check or uncheck **Use multicast flow hops**, and click **OK**.
- 

## Cisco Next Hop

For manually inserted demands, all SSM demand traffic for the (S,G) pair (multicast flow) goes through any interface that is traversed by that demand.



However, you can set WAE Design to use Cisco next hops, which are calculated using a hash on S and G for a multicast flow (S,G). The hash calculation is different in IOS and IOS XR. The default behavior is that of IOS. The IOS XR hash is used on all nodes whose OS field starts with IOS XR.

- 
- Step 1** Choose **Edit > Network Options** or click the **Network Options** icon in the Visualization toolbar.
  - Step 2** Click the **Protocols** tab.
  - Step 3** From the Multipath Selection drop-down list, choose **CiscoNextHop**, and click **OK**.
- 

## Multicast Demands

For discovered multicast flows, you can insert demands manually or use the initializer.

For simulated multicast flows, create demands manually. For information on demands in general, see [Traffic Demand Modeling](#).

To find demands associated with a multicast flow, right-click either a multicast flow or multicast flow destination, and choose **Filter to Demands**. Conversely, to find multicast flows associated with demands, right-click a demand and choose **Filter to > Multicast Flows**.

## Initialized Multicast Demands

The initializer creates simulated multicast flows corresponding to the discovered multicast flows. The demand traffic for all traffic levels existing is set to the traffic measured in the multicast flow. Following is how WAE Design determines the source and destination.

- **Source**—WAE Design first looks for an external endpoint with the same source (S) name as the source of the discovered multicast flow. If this source does not exist, WAE Design infers it from the multicast flow hops that have traffic going out of them, but none coming in. The inferred source can be a node or external endpoint.
- **Destination**—WAE Design first looks for multicast flow destinations with the same (S,G) name as those in the discovered multicast flow. If these multicast node destinations do not exist, WAE Design infers them from the multicast flow hops that have traffic going into them, but none coming out. WAE Design also infers multicast external flow hops if traffic is leaving a node in a direction that is outside the plan. These destinations are populated in the Multicast Flow Destinations table.

To run this initializer, choose **Initializers > Multicast Demands**.

## Simulated Multicast Demands

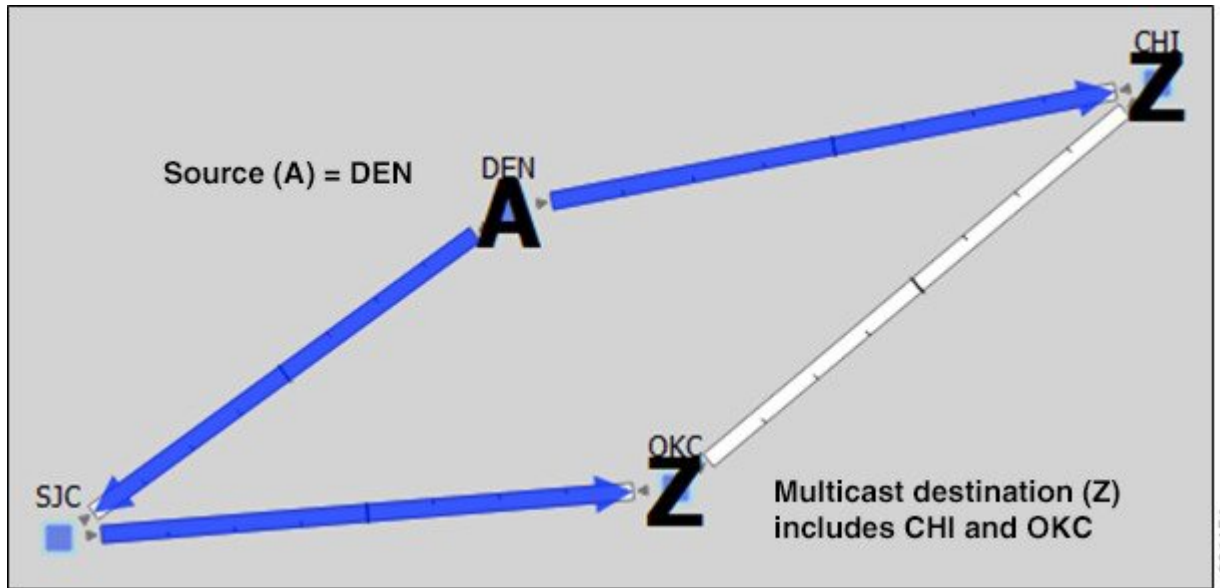
For manually inserted demands, all SSM demand traffic for the (S,G) pair (multicast flow) goes through any interface that is traversed by that demand. SSM demands are routed to take the shortest path from the destination to the source, rather than from the source to the destination, as unicast demands do. By default, multicast multipath is disabled. If two paths of equal cost exit from a node on the route back to the source, the path is chosen based on:

- The remote interface with the highest IP address is used.
- If IP addresses are not available, the router name with the lowest lexicographical name is used.

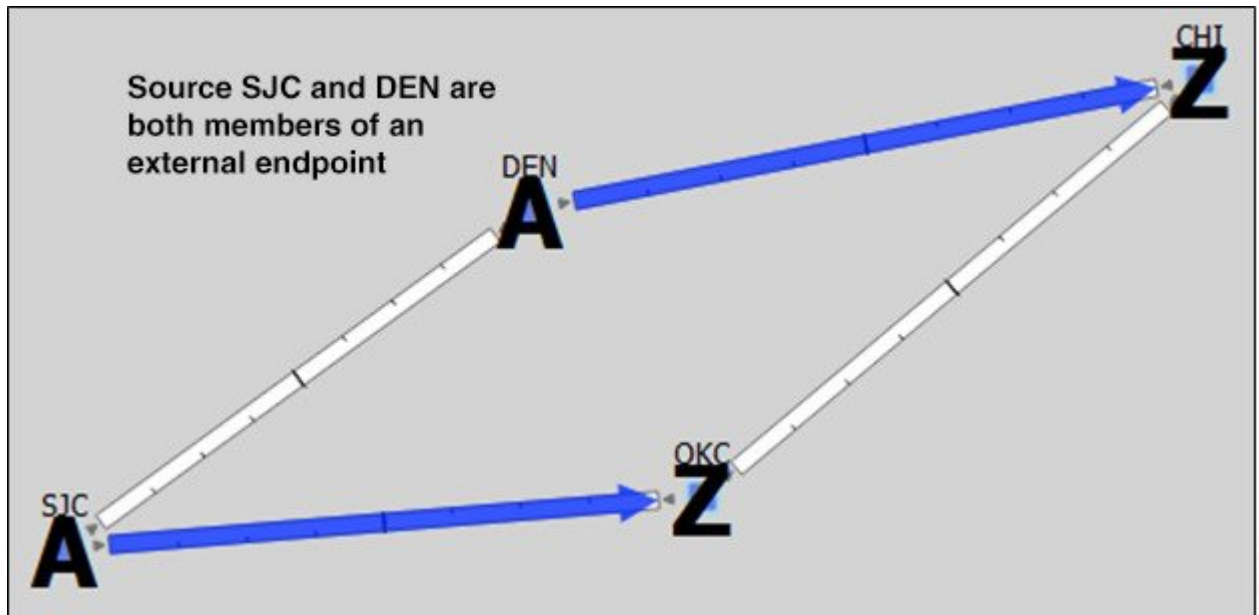
However, you can set WAE Design to use the Cisco next-hop multicast, multipath selection method. For information, see [Cisco Next Hop, on page 4](#).

The sources of these multicast demands can be nodes, interfaces, external ASes, or external endpoints. Using interfaces lets you specify the exact interface on which demand traffic is entering. Using external endpoints lets you model situations where the multicast source is outside of the nodes in the plan, and there is more than one possible entry point of the traffic flow into and through the interfaces in the plan.

In this example, the selected demand has a node source of DEN, and a multicast destination containing two nodes: CHI and OKC. The source node (S) is marked by A, and the destinations in the receiver group (G) are marked by Z.



You can model a source that is outside the plan using external endpoints. In this example, the demand's source is an external endpoint that contains SJC and DEN as members. The multicast destination includes both CHI and OKC.

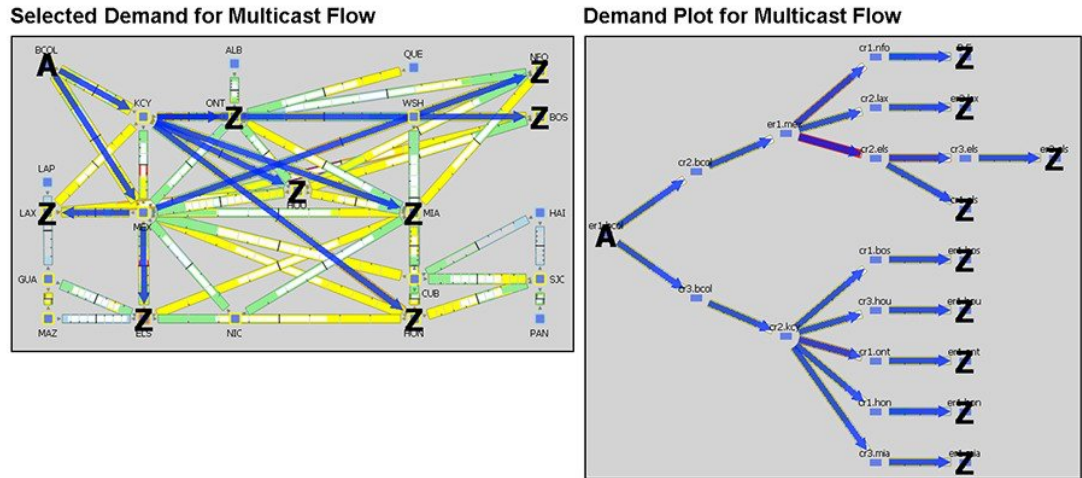


## Viewing Multicast Flows

To highlight discovered multicast flows and multicast flow hops in the plot, select them from their respective tables. To view sources and destinations of multicast demands, select the demand from its table. The source is identified in the plot by A and the destinations are identified by Z.

For complex multicast flows, filter to the demand, right-click the demand, and choose **Plot Demand**. [Figure 3: Example Demand Plot of Multicast Flow](#), on page 7 shows an example of a demand plot for a multicast flow.

**Figure 3: Example Demand Plot of Multicast Flow**

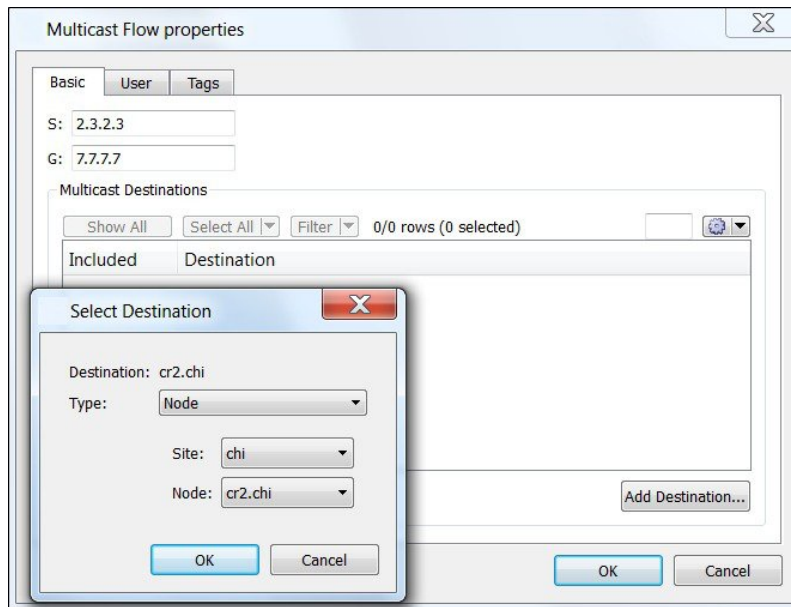


To View...	Show This Table
Multicast flows, including both source and receiver names	Multicast Flows
Discovered multicast flow hops, including (S,G) name, hop node, and hop interface	Multicast Flow Hops
Discovered multicast flow external hops (destinations that are inferred as external to the plan), including (S,G) name, direction of the outbound interface	Multicast Flow External Hops
User-created multicast flow destinations, including (S,G) name and destination node	Multicast Flow Destinations
Multicast demands	Demands

## Creating Multicast Flows

The recommended method of creating multicast flow destinations is to do so while creating the associated multicast flows, as follows.





- 
- Step 1** Choose **Insert > Multicast Flow**, or right-click the plot and choose **New > Multicast Flow**. A Multicast Flow dialog box opens.
- Step 2** In the S field, identify the source node by entering its dot-decimal name; for example, 2.3.2.3.
- Step 3** In the G field, identify the collective name for all receiver nodes (destinations) by entering its dot-decimal name; for example, 7.7.7.7.
- Step 4** Add destinations to the receiver group.
- Click **Add Destination**.
  - In the Type list, select either a node, interface, external AS, or external endpoint.
  - If you are adding a node to the receiver group, select both the site and node name of the destination point in the multicast flow.
    - If you are adding an interface, select the site, the node, and the interface.
    - If you are adding an external AS, select the external AS name and node for the destination point.
    - If you are selecting an external endpoint, select its name.
  - Click **OK**. These values now appear in the Multicast Flow dialog box, where you can disable or enable them from participating in the multicast flow.
- Step 5** Repeat Step 4 for each destination in the multicast flow.
- Step 6** Click **OK** to save and exit.
- After creating the multicast flow, you need to create demands for the multicast flows.
-



## Creating Demands for Multicast Flows

- Step 1** Choose **Insert > Demands > Demand**, or right-click the plot and choose **New > Demands > Demand**.
- Step 2** In the Name field, enter the name of the demand.
- Step 3** In the Source area, define the source (S) of the multicast flow.
- From the Type list, select the source as a node, interface, external AS, or external endpoint.
  - For node sources, select both the site and the node.  
For interface sources, select the site, node, and the interface.  
For external ASes, select both the external AS and the node within the plan file through which this external traffic flows.  
For external endpoints, select its name.
- Step 4** In the Destination area, define the receiver group (G) of the multicast flow.
- From the Type list, choose **Multicast Destination**.
  - From the Receiver list, choose the receiver that identifies the simulated multicast flow (S,G).
- Step 5** (Optional) Complete all other fields as needed, and then click **OK**.

## toggling Multicast Flow Destinations to On and Off

- Step 1** In the Multicast Flows table, double-click the multicast flow. A dialog box opens with a list of existing destinations. Each destination has a T next to it if it is currently part of the receiver group or an F if it exists, but is not part of the receiver group.

	Included	Destination
1	<input type="checkbox"/> F	if{cr1.ams to_cr2.ams}
2	<input checked="" type="checkbox"/> T	cr1.chi

- Step 2** To enable or disable the multicast flow destination, click its associated T/F value.
- Step 3** Click **OK** to save and exit.

