



CHAPTER 9

Cisco MNM System Administration

Revised: December 15, 2009, OL-18339-03

This chapter is intended for system administrators. After a short overview of Cisco Media Gateway Controller (MGC) Node Manager (MNM) system administration, this chapter provides information on common system administration tasks.

Related Topics

[Appendix C, “Troubleshooting Cisco MNM”](#)

System administration procedures related to Cisco MNM features are described in the relevant chapters. For example, system administration related to performance management is described in “Managing the Performance of Cisco MNM Devices,” [“System Administration for Performance Management”](#) section on page 7-17.



Note

There is no special system administration related to implementing a secure shell (SSH) security policy. Define a component’s security policy during deployment (see [Chapter 5, “Deploying Your Network in Cisco MNM”](#)) and change it in the Accounts dialog box (see [Chapter 8, “Other Network Management Tasks,” “Viewing or Modifying Account and SNMP Information”](#) section on page 8-6). To enable SSH on Cisco MNM, see the *Cisco Media Gateway Controller Node Manager Installation Guide* at http://www.cisco.com/en/US/products/sw/netmgtsw/ps1912/prod_installation_guides_list.html.

Overview of Cisco MNM System Administration

The Cisco MNM system administrator typically performs the following tasks:

- In initial implementation of Cisco MNM:
 - Installation of the software, including planning the necessary hardware for your site. This is described in the installation guide.
 - Configuration of the managed network devices for management by Cisco MNM. This is described in [Chapter 2, “Configuring Network Devices for Management.”](#)
 - Setting up system security. This is described in [Chapter 4, “Setting Up Cisco MNM Security.”](#)
- In day-to-day network management:
 - [Stopping and Starting Cisco PGW 2200 Softswitch Node Devices, page 9-2](#)
 - [Backing Up and Restoring the Cisco MNM Database, page 9-3](#)

**Note**

The Network Operations Center (NOC) operator uses Cisco MNM to monitor the network and respond to events and alarms. In this document, this role is called the user.

Stopping and Starting Cisco PGW 2200 Softswitch Node Devices

From Cisco MNM, a system administrator can reboot, shut down, or restart the Cisco PGW 2200 Softswitch host, the Cisco HSI server, the Cisco Billing and Measurements Server (BAMS), the Cisco ITP-L, or the Cisco LAN switch.

**Note**

Cisco IP Transfer Point LinkExtender (ITP-L) is the new name for Cisco Signaling Link Terminal (SLT). Over time, ITP-L will replace SLT in publications and the product.

Use the following procedure to stop, start, or reboot a device:

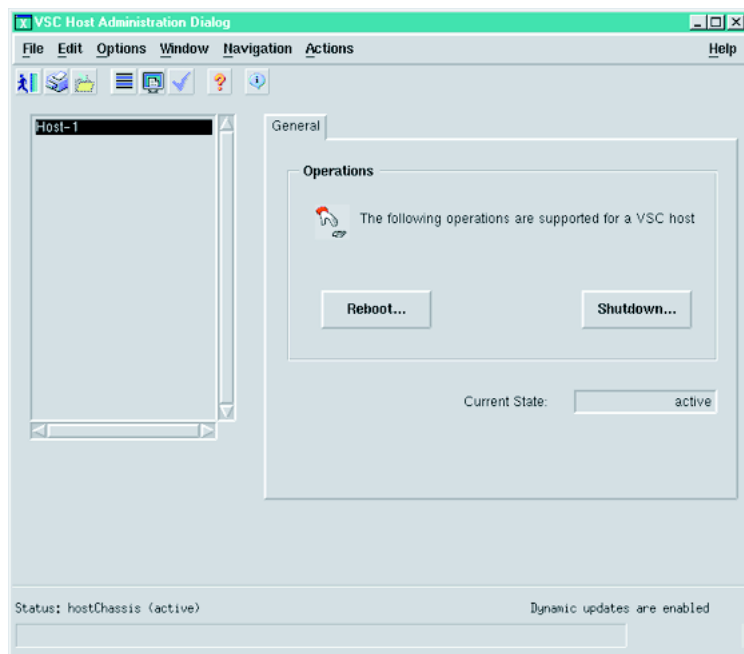
- Step 1** In the Map Viewer window, right-click the desired device, and choose **Tools > Administration Tool**.



Note You must have system administrator privileges to access the Administration Tool.

- Step 2** The Administration dialog box for the selected device displays (Figure 9-1), showing the current state of the device.

Figure 9-1 Administration Dialog Box Example



- Step 3** Do one of the following:

- To reboot, click **Reboot**.
- To shut down, click **Shutdown**.

You are asked to confirm the operation

Step 4 Click **Yes** to proceed.

Cisco MNM executes the operation.

Step 5 When you are done, press **Alt-F4** or choose **File > Close** to close the dialog box.

Backing Up and Restoring the Cisco MNM Database

Cisco MNM maintains information about your network in database and configuration files that are together referred to as the Cisco MNM database. Use the backup and restore features of the Cisco EMF to back up or restore the Cisco MNM database. For details, see the *Cisco Element Management Framework Installation and Administration Guide* for your release of Cisco EMF at

http://www.cisco.com/en/US/docs/net_mgmt/element_manager_system/3.2/installation/guide/install_1.html

