



CHAPTER 5

Working with Reports

After you have created and defined a report instance, you can generate reports from the report instance.

You can:

- Display reports in chart or tabular form
- Adjust the chart display
- Export the chart display and the report data
- [Information About Report Actions, page 5-1](#)
- [How to Generate Reports, page 5-4](#)
- [How to View Reports, page 5-6](#)
- [Adjusting the Chart Display, page 5-7](#)
- [How to Export Reports, page 5-16](#)

Information About Report Actions

The views found on the SCA Reporter display menu items. Some commonly used actions have icons for easy navigation.

The actions and their icons are described in .

Table 5-1 Reporter Actions and Icons



Action	Icon	Description	Comments
Home		Opens the Welcome view.	
Menu		Displays all the available actions for the view.	Common to all views.

Table 5-1 Reporter Actions and Icons (continued)











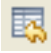



Action	Icon	Description	Comments
View Filter	—	Filters display of template groups in the Templates view.	Display either all template groups or only groups that can be used when the service configuration that generated the data is running in asymmetric routing classification mode.
Debug		Displays template code.	In the Templates view—Used to debug the structure of a report template.
Execute		Generates the selected report.	In the Properties view and the Templates view.
New or Report (from Legend)		Creates a new report instance.	In the Templates view—When you select a report template, the icon is new. In each report view—When you right-click a legend item, the Subset of Template Groups and Templates dialog box appears. Choose a template and click OK . The report instance is created (modified).
Refresh		Collapses open nodes in the Templates view so that only the template groups are displayed.	In the Templates view.
Show Cmd		Opens a window displaying the CLI command for the report instance.	In the Templates view—The CLI commands are placed on the clipboard. You can paste them into a vanilla text editor, edit them, and then execute them from a command file shell or a command prompt.
Delete		Deletes the report instance.	In the Templates view.

Table 5-1 Reporter Actions and Icons (continued)

Action	Icon	Description	Comments
Duplicate		Creates a copy of the report instance.	In the Templates view.
Rename		Highlights the report instance so that you can rename it.	In the Templates view.
Show Categories		Toggles between displaying properties with and without categories.	In the Properties view.
Show Advanced Properties		Toggles between displaying basic properties and displaying all properties.	In the Properties view.
Restore Default Value		Restores property default value.	In the Properties view—Default values can be a value or (not set). Mandatory properties are not reset to (not set).
Go to report	—	Navigates from the selected report view to the associated report instance in the Templates view.	In each report view.
Export raw data	—	Opens a browse dialog box.	In each report view.
Show List		Lists generated reports that for which no report view is open.	Above the report views—To display a report, click the icon and choose from the report names in the drop-down list. The number in the icon indicates how many reports are not in view.
Preferences	—	Opens a dialog box that allows you to choose whether to show system tasks or not. Sleeping (waiting) tasks are shown in either case.	In the Progress view—The  icon is displayed while system tasks are running.
Remove All Finished Tasks		Removes all completed tasks.	In the Progress view.

How to Generate Reports

You can generate a report from an existing, defined report instance. Report instances are found in the Templates view. You can duplicate, modify, rename, or delete the report instances (see [Managing Report Instances, page 4-1](#)). You can generate multiple reports; you can put the generate process in the background while working on other reports.

Some types of reports cannot be generated using data collected from an SCE platform running in asymmetric routing classification mode.

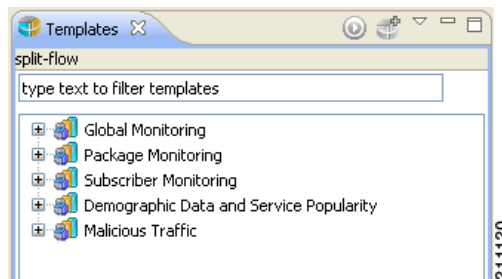
You can define and generate reports using the SCA Reporter Command-Line Interface (CLI). You can also use the CLI to pre-schedule reports. (See [The SCA Reporter Command-Line Interface, page 6-1](#).)

- [How to View Report Types that can be Generated in Asymmetric Routing Classification Mode, page 5-4](#)
- [How to Generate a Report When a Report Instance is Selected, page 5-4](#)
- [How to Generate Multiple Reports, page 5-5](#)

How to View Report Types that can be Generated in Asymmetric Routing Classification Mode

Step 1 In the Templates view, from the drop-down menu, select **View Filter >split-flow**.

Template groups whose report instances cannot be executed for asymmetric routing classification mode data are hidden.



How to Generate a Report When a Report Instance is Selected

Step 1 In the Templates view, select a report instance.

The Properties view displays the report instance properties.

Step 2 Click  (Execute).

The report is generated and is displayed in a new report view.

The Properties view displays the chart display properties.

How to Generate Multiple Reports


Note

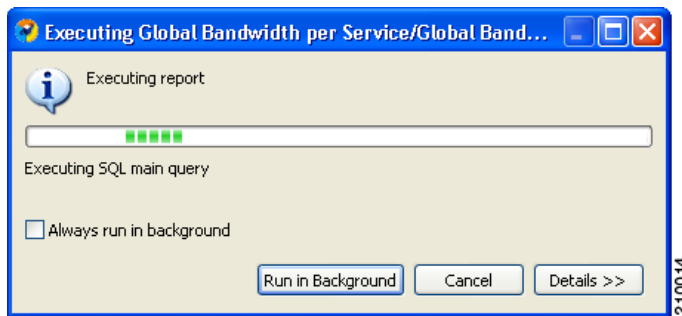
The maximum number of reports that can be generated simultaneously is configurable. If you select more report instances than this maximum values, the generation of some of the reports will be queued.

Step 1 From the Templates view, select the report instances while pressing **Ctrl**.

The selected report instances are highlighted.

Step 2 Click  (**Execute**).

A Progress dialog box appears while reports are being generated.

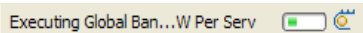


Step 3 Select a further action to take.

Do one of the following:

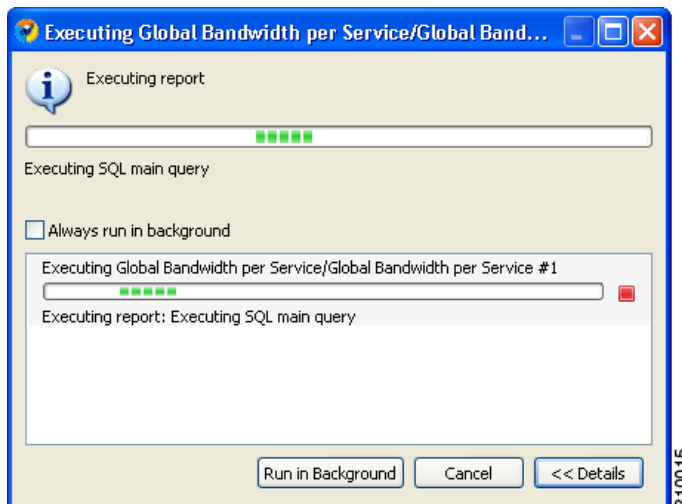
- Wait until the system task status at the bottom right corner of the SCA Reporter indicates that report generation is complete.

While the reports are being generated, the system task status shows:



- Click **Details**.

The status of all reports that are being generated is displayed.



- Click **Run in Background**.

Report generation continues running in the background. When it finishes, each report is displayed in a separate report view.

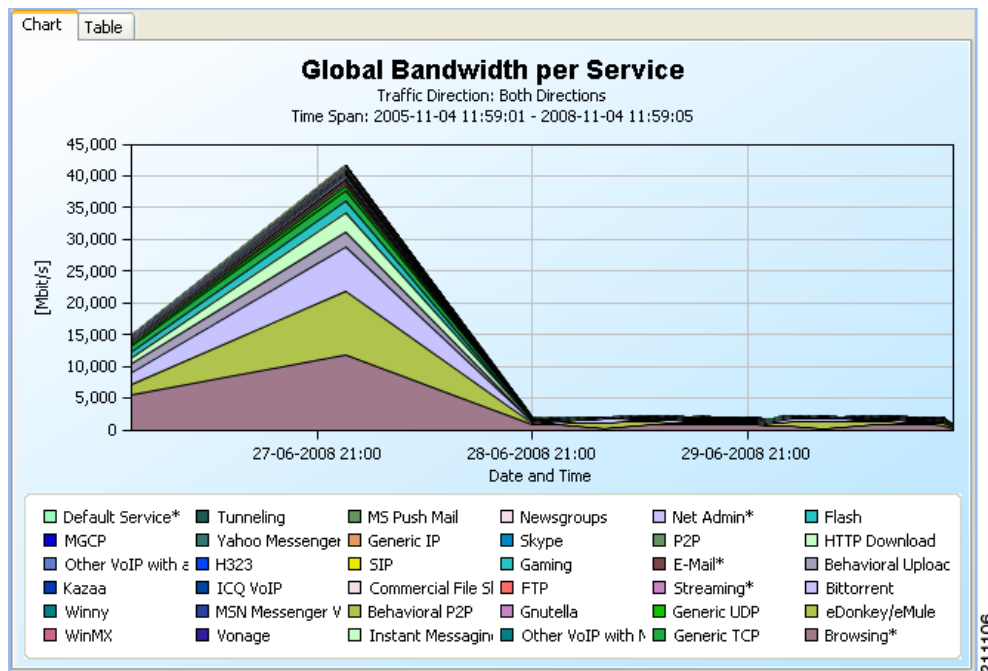
- Click **Cancel**.

You can cancel a running report generation. It can take the Database Server a short time to acknowledge a cancel request, but you can move the cancelled report to the background and continue your work uninterrupted.

How to View Reports

You can view a report as a chart or as a table.

- Step 1** To select the desired display, click the appropriate tab located at the bottom-left of the report view.



The table is useful for locating specific information.

TIMESLOT	BANDWIDTH	SERVICE
Fri, 27 Jun 2008 00:00:00	0	Default Service*
Fri, 27 Jun 2008 00:00:00	0	MGCP
Fri, 27 Jun 2008 00:00:00	0	Other VoIP with a Signaling Channel
Fri, 27 Jun 2008 00:00:00	0	Kazaa
Fri, 27 Jun 2008 00:00:00	0	Winny
Fri, 27 Jun 2008 00:00:00	0	WinMX
Fri, 27 Jun 2008 00:00:00	0	Tunneling
Fri, 27 Jun 2008 00:00:00	0	Yahoo Messenger VoIP
Fri, 27 Jun 2008 00:00:00	1	H323
Fri, 27 Jun 2008 00:00:00	1	ICQ VoIP
Fri, 27 Jun 2008 00:00:00	1	MSN Messenger VoIP
Fri, 27 Jun 2008 00:00:00	2	Vonage
Fri, 27 Jun 2008 00:00:00	4	MS Push Mail
Fri, 27 Jun 2008 00:00:00	5	Generic IP
Fri, 27 Jun 2008 00:00:00	10	SIP
Fri, 27 Jun 2008 00:00:00	16	Commercial File Sharing
Fri, 27 Jun 2008 00:00:00	40	Behavioral P2P
Fri, 27 Jun 2008 00:00:00	69	Instant Messaging
Fri, 27 Jun 2008 00:00:00	79	Newsgroups
Fri, 27 Jun 2008 00:00:00	85	Skype
Fri, 27 Jun 2008 00:00:00	86	Gaming
Fri, 27 Jun 2008 00:00:00	89	FTP
Fri, 27 Jun 2008 00:00:00	91	Gnutella
Fri, 27 Jun 2008 00:00:00	115	Other VoIP with Media Channel Only
Fri, 27 Jun 2008 00:00:00	137	Net Admin*
Fri, 27 Jun 2008 00:00:00	151	P2P
Fri, 27 Jun 2008 00:00:00	169	E-Mail*
Fri, 27 Jun 2008 00:00:00	221	Streaming*
Fri, 27 Jun 2008 00:00:00	296	Generic I IDP

Adjusting the Chart Display

You can change the appearance and type of any report chart by modifying chart display properties, such as three-dimensional display settings, chart rendering, and chart colors. You can also change the appearance of a report in the following ways:

- Drag the legend to a different spot in the report.
- Hide the legend.
- Hide items from the legend; the corresponding items in the graph will be removed from view.
- Zoom in or out—drag the graph so that the desired section is in focus.
- [Configuring the Properties of a Chart Display, page 5-8](#)
- [Changing the Appearance of the Chart, page 5-9](#)
- [Zooming, page 5-12](#)
- [Hiding Variables, page 5-13](#)
- [Managing the Chart Legend, page 5-15](#)

Configuring the Properties of a Chart Display

You configure chart display properties in the Properties view. As you make changes, the chart display is updated. There are also adjustments that are made directly in the report view (see [Adjusting the Chart Display, page 5-7](#)).


Note

Changes to chart display properties are not saved in the report instance. When you next execute the report instance, the report will be generated with default chart display properties.

[Table 5-2](#) lists chart display properties and their descriptions:

Table 5-2 *Chart Display Properties*

Property	Type	Default	Values	Comments
Look				
3D	Boolean	True	True, False	Toggles between the two values.
Chart rendering	Single choice	Depends on report template	See list following this table	The chart can be displayed in many graphical formats.
Legend visibility	Boolean	True	True, False	Toggles between the two values.
Look/3D				
Oblique	Boolean	True	True, False	Only displayed when 3D is True . If True , there is always 90 degrees between the x and y axes when the chart is rotated.
Settings	Sliding scale	See table following this table	See table following this table	Only displayed when 3D is True . Opens the 3D properties dialog box with sliding scales for eight graphical properties.

[Table 5-2](#) shows possible values for the **Chart Rendering** property.

[Table 5-4](#) lists the properties set in the 3D Properties dialog box and their possible values.

Table 5-3 Chart Display Types

<ul style="list-style-type: none"> • BAR • STACKED_BAR • STACKED100_BAR • SUPERIMPOSED_BAR • AREA • STACKED_AREA 	<ul style="list-style-type: none"> • STACKED100_AREA • POLYLINE • STACKED_POLYLINE • STACKED100_POLYLINE • SCATTER 	<ul style="list-style-type: none"> • STAIR • STACKED_STAIR • STACKED100_STAIR • SUMMED_STAIR • PIE
--	---	---

Table 5-4 3D Chart Properties

Property	Values	Default
Rotation	-90 ... 90	35
Elevation	-90 ... 90	45
Depth	0 ... 100	20
Depth Gap	0 ... 100	0
Zoom	0 ... 200	100
Ambient Light	0 ... 100	10
Light Latitude	-90 ... 90	0
Light Longitude	-90 ... 90	0

Changing the Appearance of the Chart

You can change the chart type of the report, adjust the graphical display of the chart, and change the colors used in the chart.

- [How to Change the Chart Type, page 5-9](#)
- [How to Modify the Graphical Display, page 5-10](#)
- [How to Change the Colors Used in a Chart, page 5-11](#)

How to Change the Chart Type

Step 1 Generate a report.

A report view opens displaying the report, and the Properties view displays the chart display properties.

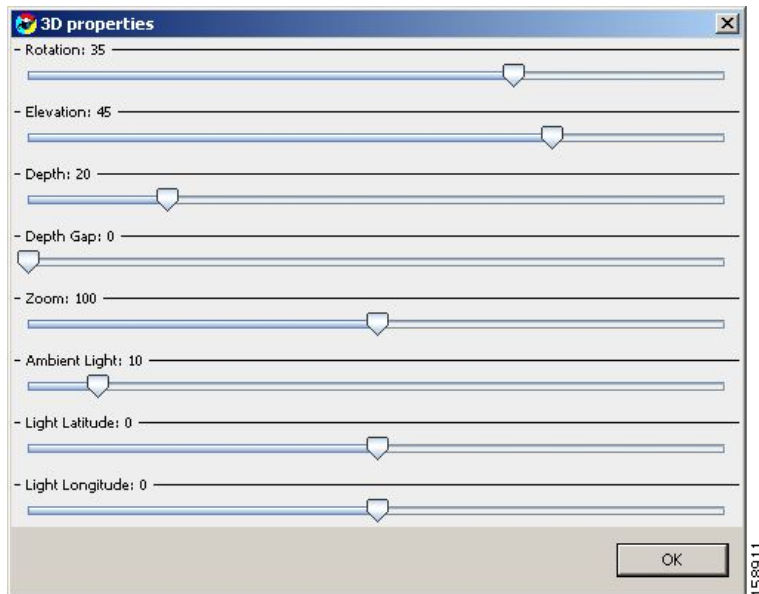
Step 2 In the Properties view, select the **Chart Rendering** row, and click the browse button to open a drop-down list.



- Step 3** From the drop-down list, choose the type of chart that you want to display.
The report is updated when you click anywhere else in the Properties view.

How to Modify the Graphical Display

- Step 1** Generate a report.
A report view opens displaying the report, and the Properties view displays the chart display properties.
- Step 2** To display the chart in two dimensions, click the 3D property.
The value of the **3D** property toggles from **True** to **False** and the **Look/3D** category is removed from the Properties view.
- Step 3** Click the 3D property again.
The chart displays in three dimensions, and the **Look/3D** category reappears.
- Step 4** Select the **Settings** property.
The 3D properties dialog box appears.



- Step 5** Change the three-dimensional properties using the sliding scales.
- Step 6** The chart display changes as you change the properties.
- Step 7** Click **OK**.
The new values are assigned to the Settings property.

How to Change the Colors Used in a Chart

You can change the default color applied to a legend item in a chart. You may want to do this if, for instance, legend items that are adjacent in the chart have similar colors.

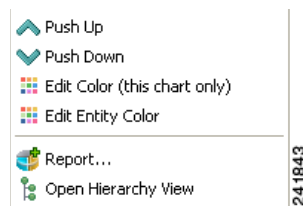

Note

If legacy coloring is enabled (see [How to Set the Colors Used in Charts, page 2-14](#)), this option is not available.

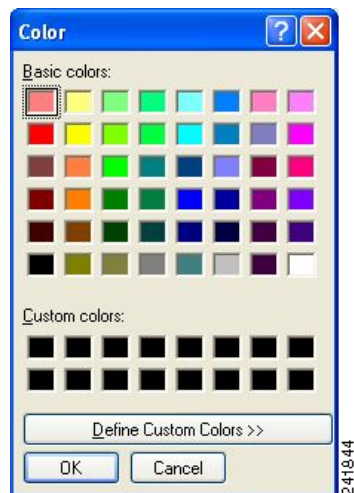

Note

You can create and apply your own color sets globally. See [How to Set the Colors Used in Charts, page 2-14](#).

- Step 1** Generate a report.
A report view opens displaying the report.
- Step 2** Right-click an item in the legend.
A popup menu appears.



- Step 3** From the menu, select either **Edit Color (this chart only)** or **Edit Entity Color**. The former option changes the color temporarily for this chart only, the latter makes the change persistent for all current and future charts.
A color palette opens.



- Step 4** Select a new color from the palette.

Step 5 Close the palette.

The new color is applied in the chart to the selected variable.

If you selected Edit Entity Color at Step 3, the new color is applied to all open charts, except those using temporary colors.

Zooming

- [How to Zoom in on a Two-Dimensional Chart, page 5-12](#)
- [How to Drag a Zoomed-In Chart, page 5-12](#)
- [How to Zoom Out of a Zoomed-In Chart, page 5-13](#)

How to Zoom in on a Two-Dimensional Chart

You can zoom in or out of two-dimensional charts.

While you are zoomed-in, you can drag the chart to view different sections.

Step 1 Generate a report.

A report view opens displaying the report, and the Properties view displays the chart display properties.

Step 2 To display the chart in two dimensions, click the **3D** property.

The value of the **3D** property toggles from **True** to **False** and the **Look/3D** category is removed from the Properties view.

Step 3 Mark off a rectangle by dragging the mouse over the chart.

The cursor changes to a plus icon.

Step 4 Release the mouse button, and the view zooms in.

How to Drag a Zoomed-In Chart

Step 1 Generate a report and display the chart in two dimensions.

Step 2 Zoom in to the top part of the chart.

Step 3 To move the chart down, right-click it while dragging the chart.

The chart moves up, and the bottom of the chart appears.

How to Zoom Out of a Zoomed-In Chart

- Step 1** Mark off a rectangle by dragging the mouse over the chart while pressing the **Shift** key. The cursor changes to a minus icon.
- Step 2** Release the mouse button, and the view zooms out.

Hiding Variables

You can hide variables that are part of the report, so that they do not display in the chart.



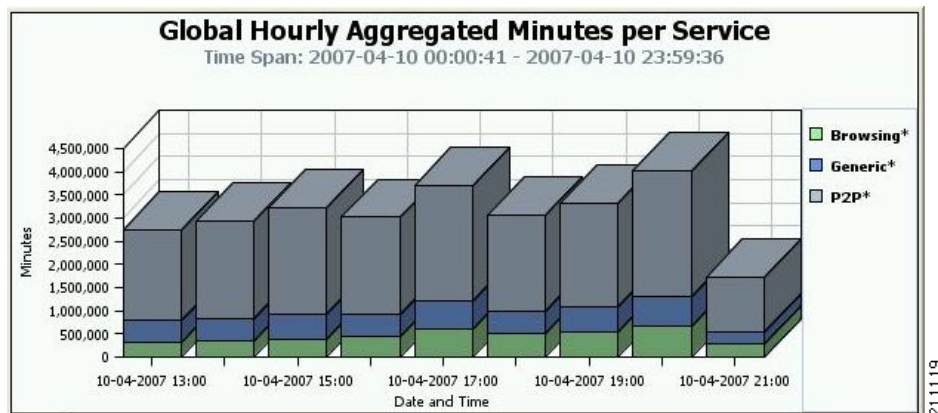
Note

You can also select which variables will be included in the report by modifying the report instance. (See [How to Modify an Existing Report Instance](#), page 4-3.)

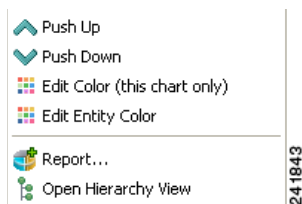
- [How to Hide Variables in the Chart](#), page 5-13
- [How to Redisplay a Hidden Variable](#), page 5-14

How to Hide Variables in the Chart

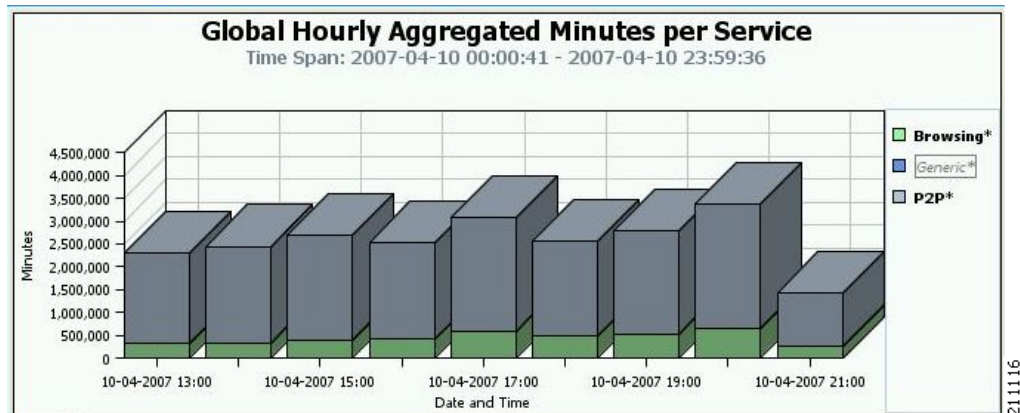
- Step 1** Generate a report.
A report view opens displaying the report.



- Step 2** Right-click a variable in the legend.
A popup menu appears.

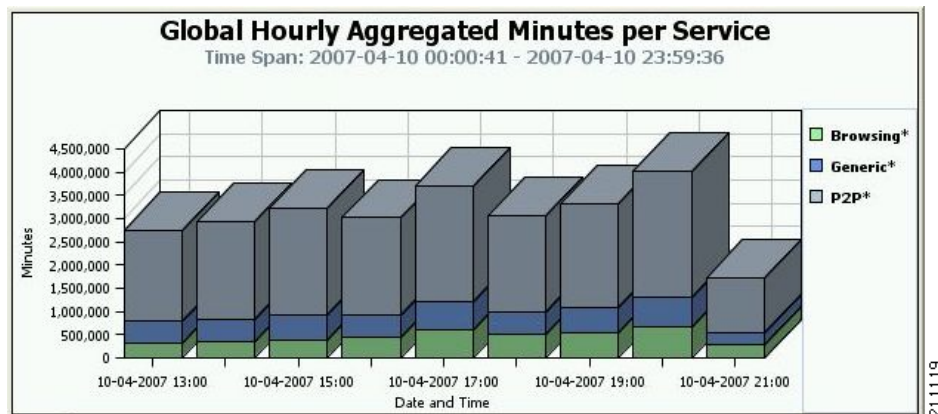


- Step 3** From the menu, select **Hide**.
The variable is dimmed out in the legend and removed from the chart.



How to Redisplay a Hidden Variable

- Step 1** Right-click a dimmed variable in the legend.
A popup menu appears.
- Step 2** From the menu, select **Show**.
The variable is restored in the legend and displayed from the chart.



Managing the Chart Legend

You can move the chart legend from its default position, or you can remove it from the chart display.

**Note**

You can also globally configure how the legend is displayed. See [How to Configure the Legend Displayed in Charts, page 2-19](#).

- [How to Move the Chart Legend, page 5-15](#)
- [How to Hide the Chart Legend, page 5-15](#)

How to Move the Chart Legend

-
- Step 1** Generate a report.
A report view opens displaying the report.
- Step 2** Right-click the legend of the chart and drag it to the required position.
The legend moves to the new position.
-

How to Hide the Chart Legend

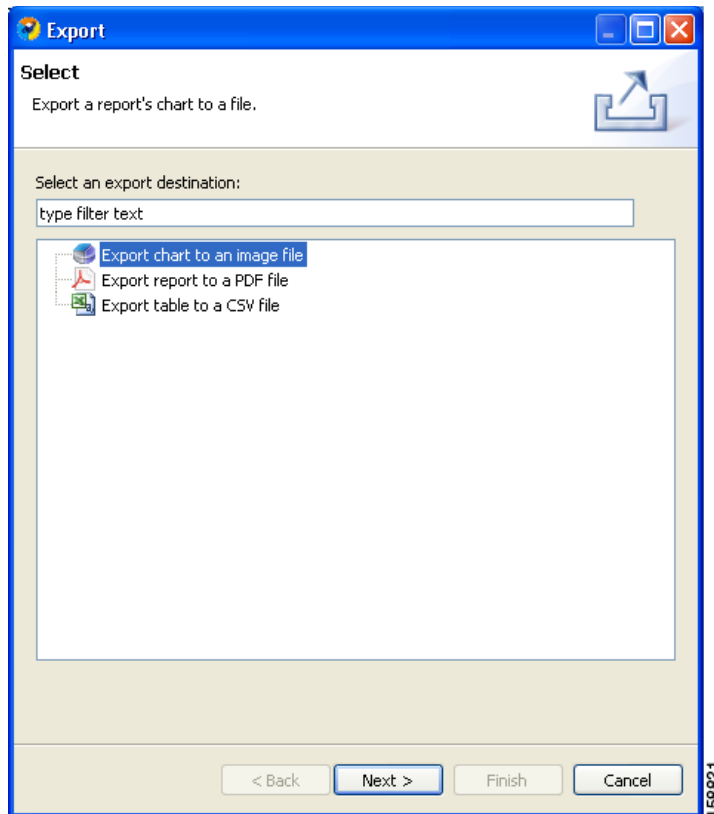
-
- Step 1** Generate a report.
The Properties view displays the chart display properties.
- Step 2** To hide the chart legend, click the **Legend visibility** property.
The value of the **Legend visibility** property toggles from **True** to **False** and the chart legend is removed from the chart.
-

How to Export Reports

You can export reports to most graphic formats, and you can export tables to CSV or Quoted CSV formats, which you can open as spreadsheets. You can export multiple reports in one export operation.

Step 1 After executing one or more report instances, select **File >Export**.

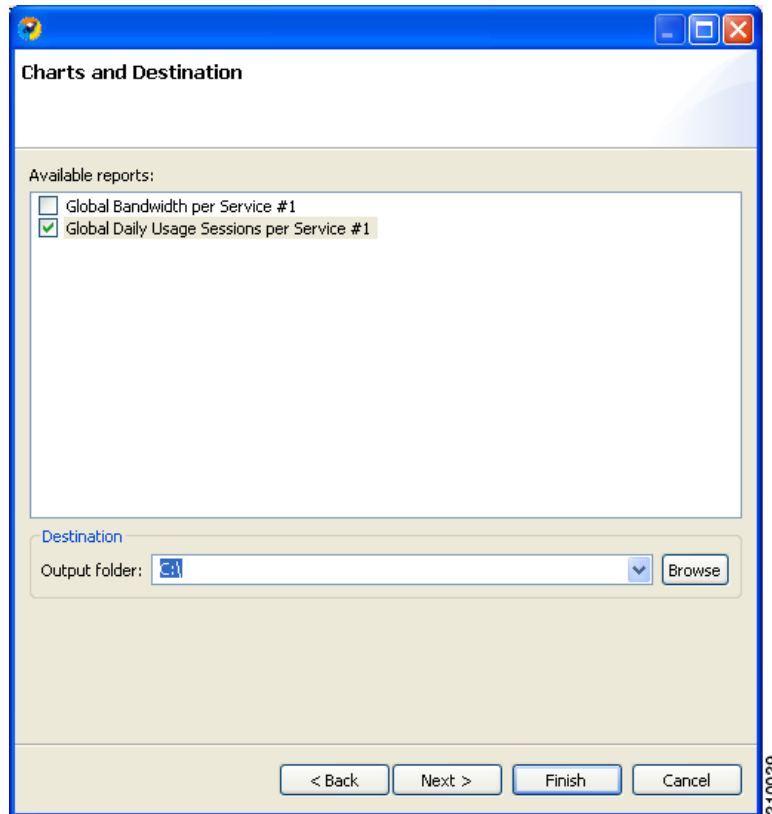
The Export wizard appears.



Step 2 Select **Chart** or **Table**.

Step 3 Click **Next**.

The Tables and Destination page of the Export wizard opens.



Step 4 Check one or more of the Available reports.

Step 5 (Optional) To change the Output folder, click **Browse**.

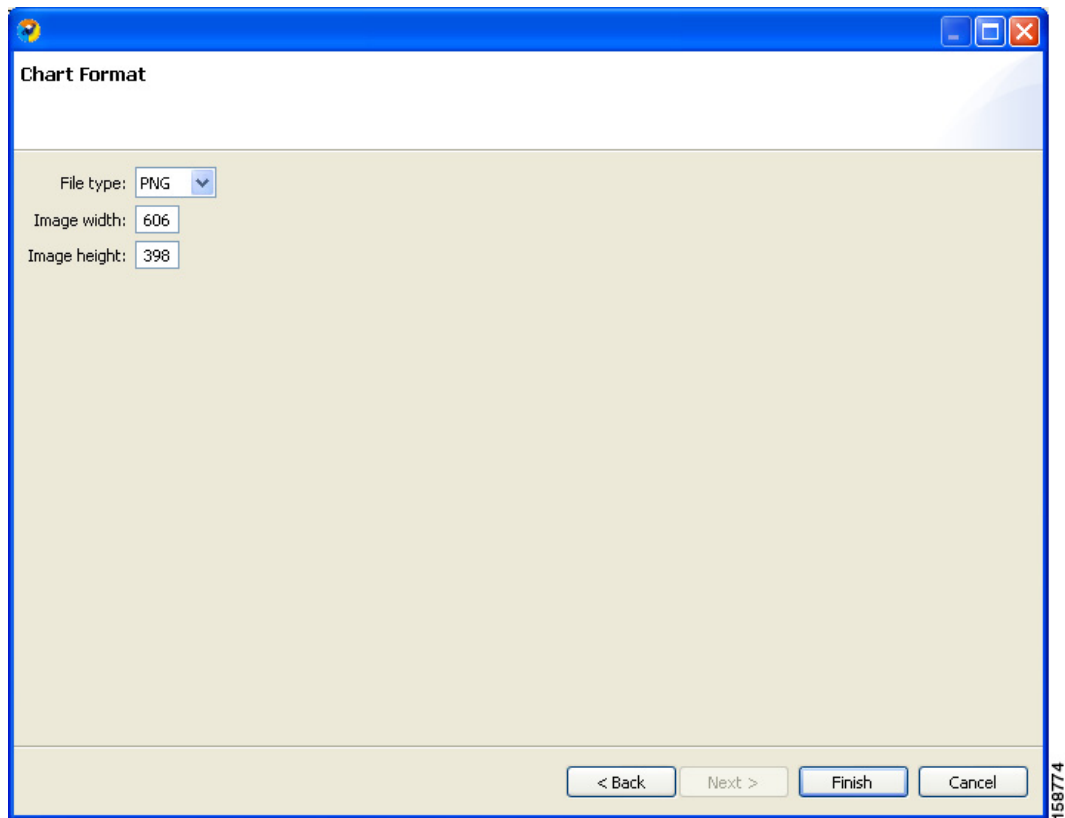
Step 6 Click **Next**.

The Format page of the Export wizard opens. (The display depends on whether you chose Chart or Table in Step 2.)

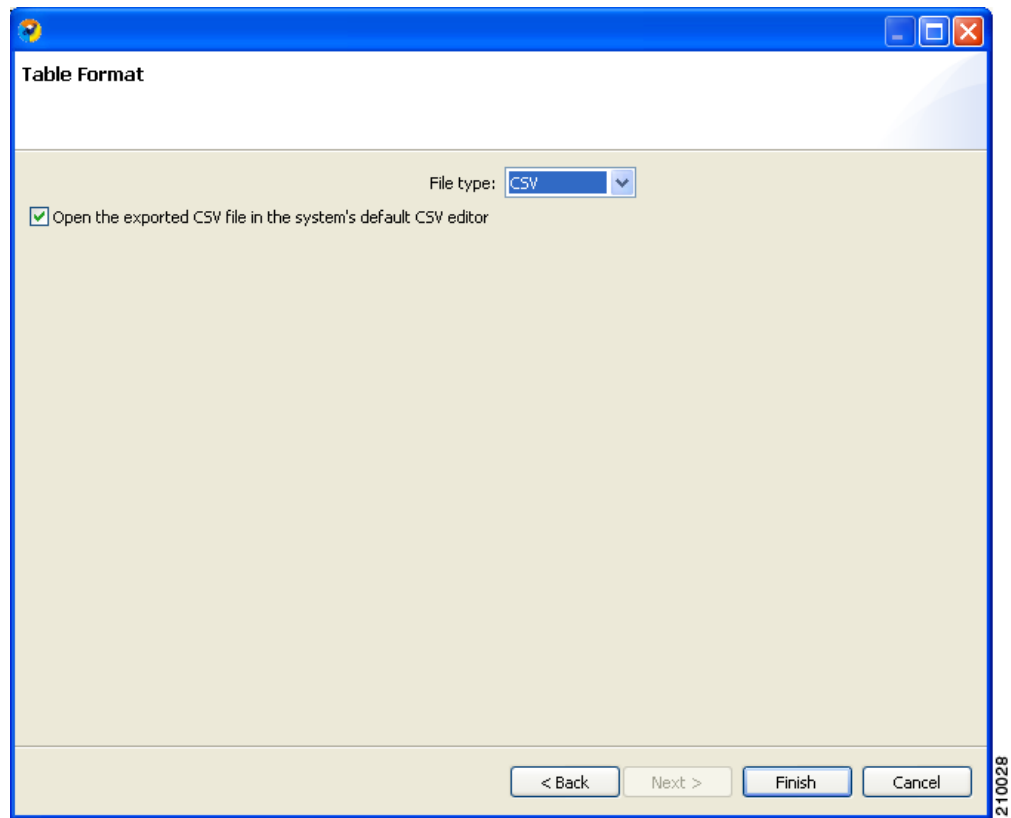
Step 7 Enter required information.

Do one of the following:

- (For Chart)



- From the File type drop-down list, choose a file type.
- In the Image width and Image height fields, enter values in pixels.
- (For Table)



- From the File type drop-down list, choose a file type.

Step 8 Click **Finish**.

Each report selected is saved in a separate file.
