



# CHAPTER 1

## Cisco Service Control Overview

---

This chapter provides a general overview of the Cisco Service Control solution. It introduces the Cisco service control concept and capabilities.

It also briefly describes the hardware capabilities of the service control engine (SCE) platform and the Cisco specific applications that together compose the total Cisco service control solution.

- [Cisco Service Control Solution, page 1-1](#)
- [Cisco Service Control Capabilities, page 1-2](#)
- [SCE Platform Description, page 1-3](#)
- [Management and Collection, page 1-4](#)

## Cisco Service Control Solution

The Cisco service control solution is delivered through a combination of hardware and specific software solutions that address various service control challenges. Service providers can use the SCE platform to support classification, analysis, and control of Internet and IP traffic.

Service control enables service providers to:

- Capitalize on existing infrastructure.
- Analyze, charge for, and control IP network traffic at multigigabit wire line speeds.
- Identify and target high-margin content-based services and enable their delivery.

As the downturn in the telecommunications industry has shown, IP service providers' business models need to be reworked to make them profitable. Having spent billions of dollars to build ever larger data links, providers have incurred massive debts and faced rising costs. At the same time, access and bandwidth have become commodities where prices continually fall and profits disappear. Service providers have realized that they must offer value-added services to derive more revenue from the traffic and services running on their networks.

Cisco service control solutions allow the service provider to capture profits from IP services through detailed monitoring, precise, real-time control, and awareness of services as they are delivered.

## Service Control for Broadband Service Providers

Service providers of any access technology (DSL, cable, mobile, and so on) targeting residential and business consumers must find new ways to get maximum leverage from their existing infrastructure, while differentiating their offerings with enhanced IP services.

The Cisco service control application for broadband adds a layer of service intelligence and control to existing networks that can:

- Report and analyze network traffic at subscriber and aggregate level for capacity planning
- Provide customer-intuitive tiered application services and guarantee application service level agreements (SLAs)
- Implement different service levels for different types of customers, content, or applications
- Identify network abusers who are violating the acceptable use policy (AUP)
- Identify and manage peer-to-peer traffic, NNTP (news) traffic, and spam abusers
- Enforce the AUP
- Integrate Service Control solutions easily with existing network elements and business support systems (BSS) and operational support systems (OSS)

## Cisco Service Control Capabilities

The core of the Cisco service control solution is the network hardware device: the Service control engine (SCE). The core capabilities of the SCE platform, which support a wide range of applications for delivering service control solutions, include:

- Subscriber and application awareness—Application-level drilling into IP traffic for real-time understanding and controlling of usage and content at the granularity of a specific subscriber.
  - Subscriber awareness—The ability to map between IP flows and a specific subscriber to maintain the state of each subscriber transmitting traffic through the SCE platform and to enforce the appropriate policy on this subscriber's traffic.

Subscriber awareness is achieved either through dedicated integrations with subscriber management repositories, such as a DHCP or a RADIUS server, or through sniffing of RADIUS or DHCP traffic.
  - Application awareness—The ability to understand and analyze traffic up to the application protocol layer (Layer 7).

For application protocols implemented using bundled flows (such as FTP, which is implemented using Control and Data flows), the SCE platform understands the bundling connection between the flows and treats them accordingly.
- Application-layer, stateful, real-time traffic control—The ability to perform advanced control functions, including granular bandwidth (BW) metering and shaping, quota management, and redirection, using application-layer, stateful, real-time traffic transaction processing. This requires highly adaptive protocol and application-level intelligence.
- Programmability—The ability to quickly add new protocols and adapt to new services and applications in the service provider environment. Programmability is achieved using the Cisco Service Modeling Language (SML).

Programmability allows new services to be deployed quickly and provides an easy upgrade path for network, application, or service growth.

- Robust and flexible back-office integration—The ability to integrate with existing third-party systems at the service provider, including provisioning systems, subscriber repositories, billing systems, and OSS systems. The SCE provides a set of open and well-documented APIs that allows a quick integration process.
- Scalable high-performance service engines—The ability to perform all of these operations at wire speed.

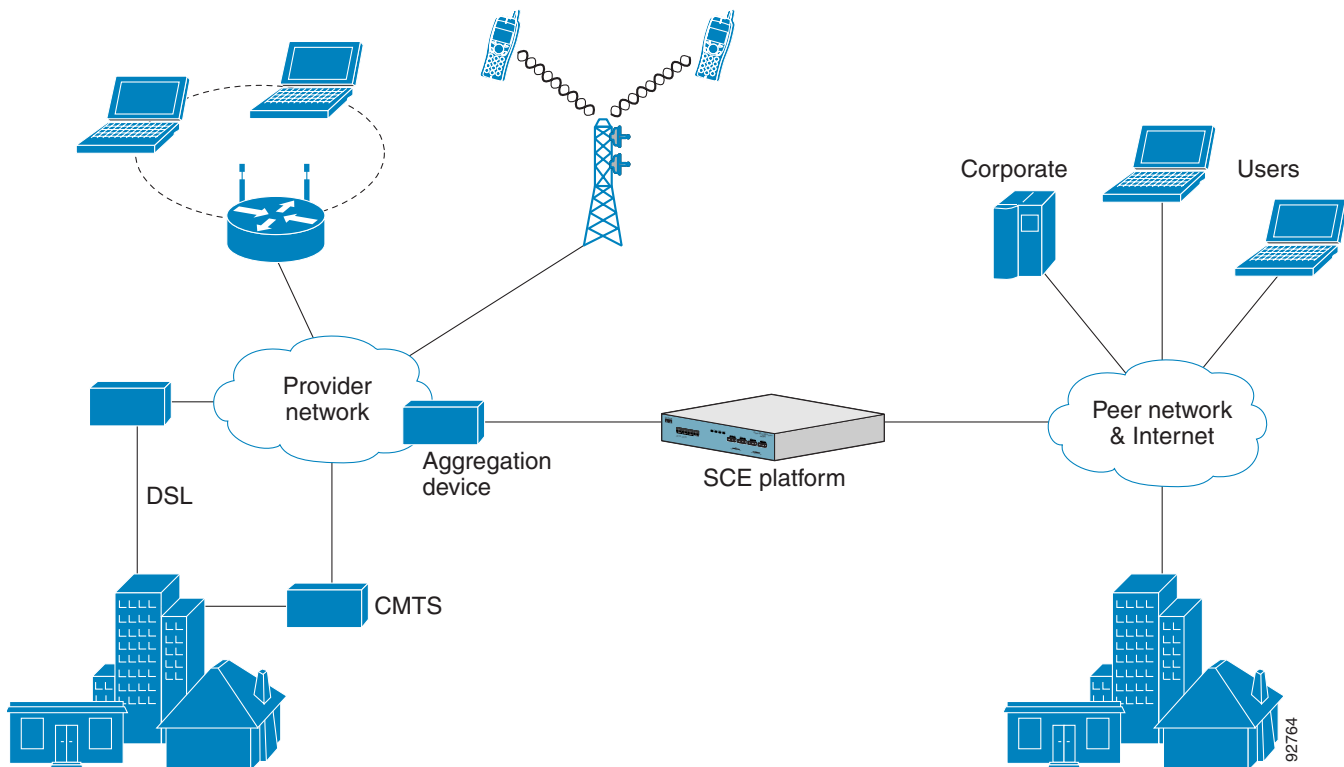
## SCE Platform Description

The SCE family of programmable network devices performs application-layer stateful-flow inspection of IP traffic, and controls the traffic based on configurable rules. The SCE platform is a network device that uses ASIC components and reduced instruction set computer (RISC) processors to exceed beyond packet counting and expand into the contents of network traffic. Providing programmable, stateful inspection of bidirectional traffic flows, and mapping these flows with user ownership, SCE platforms provide real-time classification of network use. The classification provides the basis of the SCE platform advanced traffic-control and bandwidth-shaping functionality. Where most bandwidth shaper functionality ends, the SCE platform provides further control and shaping options, including:

- Layer 7 stateful wire-speed packet inspection and classification
- Robust support for more than 600 protocols and applications, including:
  - General—HTTP, HTTPS, FTP, Telnet, Network News Transfer Protocol (NNTP), Simple Mail Transfer Protocol (SMTP), Post Office Protocol 3 (POP3), Internet Message Access Protocol (IMAP), Wireless Application Protocol (WAP), and others
  - Peer-to-Peer (P2P) file sharing—FastTrack-KazaA, Gnutella, BitTorrent, Winny, Hotline, eDonkey, DirectConnect, Piolet, and others
  - P2P VoIP—Skype, Skinny, DingoTel, and others
  - Streaming and Multimedia—Real Time Streaming Protocol (RTSP), Session Initiation Protocol (SIP), HTTP streaming, Real Time Protocol (RTP) and Real Time Control Protocol (RTCP), and others
- Programmable system core for flexible reporting and bandwidth control
- Transparent network and BSS and OSS integration into existing networks
- Subscriber awareness that relates traffic and usage to specific customers

Figure 1-1 illustrates a common deployment of an SCE platform in a network.

Figure 1-1 SCE Platform in the Network

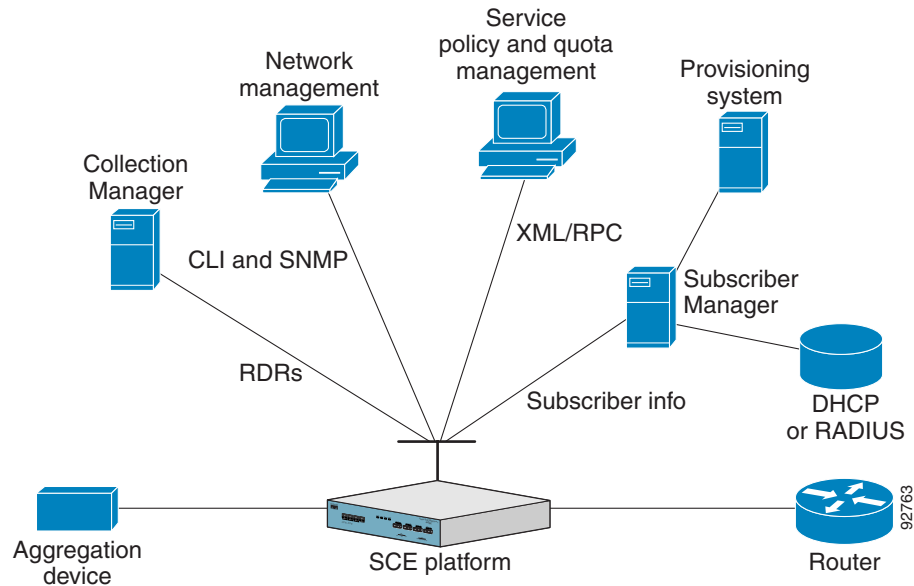


## Management and Collection

The Cisco service control solution includes a complete management infrastructure that provides the following management components to manage all aspects of the solution:

- Network management
- Subscriber management
- Service Control management

These management interfaces are designed to comply with common management standards and to integrate easily with existing OSS infrastructure (Figure 1-2).

**Figure 1-2 Service Control Management Infrastructure**

## Network Management

The Cisco service control solution provides complete network Fault, Configuration, Accounting, Performance, Security (FCAPS) Management.

Two interfaces provide network management:

- **Command-line interface (CLI)**—Accessible through the Console port or through a Telnet connection, the CLI is used for configuration and security functions.
- **SNMP**—Provides fault management (through SNMP traps) and performance-monitoring functionality.

## Subscriber Management

Where the Cisco service control application for broadband (SCA BB) enforces policies on different subscribers and tracks usage on an individual subscriber basis, the Cisco service control management suite (SCMS) subscriber manager (SM) may be used as middleware software for bridging between OSS and SCE platforms. Subscriber information is stored in the SM database and can be distributed between multiple platforms according to actual subscriber placement.

The SM provides subscriber awareness by mapping network IDs to subscriber IDs. It can obtain subscriber information using dedicated integration modules that integrate with AAA devices, such as RADIUS or DHCP servers.

Subscriber information may be obtained in one of two ways:

- **Push Mode**—The SM pushes subscriber information to the SCE platform automatically upon logon of a subscriber.
- **Pull Mode**—The SM sends subscriber information to the SCE platform in response to a query from the SCE platform.

## Service Configuration Management

Service configuration management is the ability to configure the general service definitions of a service control application. A service configuration file containing settings for traffic classification, accounting and reporting, and control is created and applied to an SCE platform. The SCA BB application provides tools to automate the distribution of these configuration files to SCE platforms. This standards-based approach makes it easy to manage multiple devices in a large network.

Service Control provides a GUI to edit and create these files and a complete set of APIs to automate their creation.

## Data Collection

Data collection occurs as follows:

1. All analysis and data processing functions of the SCE platform result in the generation of Raw Data Records (RDRs), which the SCE platform forwards using a simple TCP-based protocol (RDR-Protocol).
2. RDRs are processed by the Cisco service control management suite collection manager.
3. The collection manager software is an implementation of a collection system that receives RDRs from one or more SCE platforms. It collects these records and processes them in one of its adapters. Each adapter performs a specific action on the RDR.

RDRs contain a variety of information and statistics, depending on the configuration of the system.

Three main categories of RDRs include:

- Transaction RDRs—Records generated for each *transaction*, where a transaction is a single event detected in network traffic. The identification of a transaction depends on the particular application and protocol.
- Subscriber Usage RDRs—Records generated per subscriber, describing the traffic generated by that subscriber for a defined interval.
- Link RDRs—Records generated per link, describing the traffic carried on the link for a defined interval.