



Release Notes for the Cisco Smart+Connected Residential Solution, Release 2.5.2

Revised: November 6, 2013
Part Number: OL-29755-02

This document provides important information for Release 2.5.2 of the Cisco Smart+Connected Residential Solution. Refer to the following topics for more information.

Contents

This document includes the following sections:

- [New and Improved in Release 2.5.2, page 2](#)
 - [New Certified Drivers, page 2](#)
 - [Important Bug Fixes, page 3](#)
 - [Firmware Updates, page 4](#)
 - [Limitations and Workarounds: Release 2.5.2, page 4](#)
- [Validated Upgrade Paths for Release 2.5.2, page 4](#)
- [Release 2.5.2 Compatibility Questions, page 5](#)
- [Obtaining Supported Software, page 7](#)
- [Upgrading a Single System to Release 2.5.2, page 9](#)
- [Localization Notes, page 11](#)
- [Supported Cisco Devices, page 11](#)
- [Related Documentation, page 13](#)



Americas Headquarters:
Cisco Systems, Inc., 170 West Tasman Drive, San Jose, CA 95134-1706 USA

New and Improved in Release 2.5.2

Release 2.5.2 includes bug fixes and feature enhancements. This release supersedes all previous updates and is recommended for new installations, as an upgrade for existing installations, or to resolve any problems with a previous release.

**Note**

Release 2.22 was the initial Cisco release of the Cisco Smart+Connected Residential Solution, followed by Release 2.3 and, Release 2.5.0, and Release 2.5.2. There is no Release 2.4 or Release 2.5.1 product.

See the following topics for more information:

- [Cisco SC Residence Mobile App, page 2](#)
- [New Certified Drivers, page 2](#)
- [Important Bug Fixes, page 3](#)
- [Firmware Updates, page 4](#)
- [Limitations and Workarounds: Release 2.5.2, page 4](#)

Cisco SC Residence Mobile App

Release 2.5.2 of the Cisco SC Residence Mobile App adds support for Apple iOS 7, and bug fixes for improved stability.

New Certified Drivers

The following list includes newly-certified drivers in Release 2.5.2.

- Wireless Outlet Dimmer V2
- Wireless Outlet Switch V2
- Dimmable Light (Outlet)
- Non-Dimmable Light (Outlet)

These new drivers include the following features:

- All ramp rates (click and hold) are associated with the light driver rather than being split between the module and light.
- The dimmable and non-dimmable light drivers both include settings for Top, Bottom, and Toggle LED colors that will be used with keypad buttons bound to the light.
- Bindings are now made to the actual light rather than the outlet.

Existing projects using the legacy outlet drivers can continue to use them. All new projects should use the new drivers.

To ensure that the new drivers show up properly in your driver list, right click on the **Lighting** folder in the My Drivers list, and then select **Restore Default List**.

Important Bug Fixes

This section highlights important improvements in Release 2.5.2. This is a list of high-priority fixes, not a comprehensive list of all changes and improvements in the release.

- Fixed an issue with the Next-Generation Keypad buttons; they were bound to Panelized Lighting, but the LEDs didn't update.
- Fixed a memory leak on touchscreens that occurred while running the Photo Screen Saver.
- Fixed a problem where the Puck Switch toggle would turn off but not turn on again.
- Fixed an issue where, if a TuneIn stream had more than one server (for load balancing), it wasn't always playing the stream, depending on the server you accessed.
- Added a Conservative AEC in the Cisco In-wall Display and the Cisco Portable Tablet driver properties to help with squealing issues while in an intercom session between two (2) supported touchscreens.
- Fixed an issue where `raproxyd` was getting into an unresponsive state, causing remote access connections to fail or time out.
- Fixed a problem with the low-battery indication and battery reading no longer being correct on a Cisco Remote 250.
- Corrected a problem where 0-10V Dimmers weren't able to be added to an engraving order.
- Fixed a problem where Director crashed in very large projects containing multiple gateways.
- Corrected a problem where the Wireless Thermostats would not start the Embernet upgrade in Release 2.5.2.
- Corrected a problem where the Audio Matrix Switch V2 identified as a V3 (which breaks the devices).
- Corrected a problem where the Field Server Thermostat driver did not function correctly in Celsius mode.
- Corrected a problem with Next-Generation Lighting where the Auxiliary Keypad was not functioning if it ran in 4-wire romex with the load.
- Corrected a problem where the Lutron Homeworks P5 stopped communicating with Director when it was rebooted.
- Corrected a problem where the Panelized Lighting Dimmer crashed when making setting changes in the module's Configuration web page.
- Corrected a problem where using Composer 2.5.0 to create a project on a prior-version controller caused project corruption.
- Corrected a problem where the KNX Switch driver caused a Director crash on Release 2.5.2. See the [“Limitations and Workarounds: Release 2.5.2”](#) section on page 4.
- Corrected a problem where the Advanced Lighting Scenes wouldn't show loads.
- Corrected a problem where the adding new rooms to an existing lighting scene using the Navigator UI caused the UI to auto hide the room.
- Corrected a problem where the leaving the Weather app open on a Flash navigator caused it to hang.
- Fixed several conflict resolution issues on Panelized Lighting.

Firmware Updates

Below is a list of the firmware numbers that have changed in Release 2.5.2.

Table 1 *Firmware Updates*

| Devices | Firmware Version |
|----------------------------------|--------------------------|
| Cisco Smart+Connected Remote 150 | 03.21.09_2.5.2.245131-fw |
| Cisco Smart+Connected Remote 250 | |

Limitations and Workarounds: Release 2.5.2

- **Composer Version Restriction** – Previously, if you had a project on an earlier version than your current Composer version, you received a message that you should not modify the earlier project in the newer version. This restriction was only handled via messaging. With Composer 2.5.2, this restriction is now enforced. This means you cannot edit the project (different versions of Composer were causing binding issues).
- **Next-Generation Lighting** – If an Adaptive Phase Dimmer or Forward Phase Dimmer is set as a 2-button switch, toggle issues may occur if linked to another Adaptive Phase Dimmer or Forward Phase Dimmer.
- **KNX Switch** – The KNX switch driver causes a Director crash on Release 2.5.2.
- **Audio Matrix Switch** — Always use the drivers in Release 2.5.2 for the Audio Matrix Switch and HDMI Switch.

Validated Upgrade Paths for Release 2.5.2

Table 2 *Validated Upgrade Paths*

| Device | Upgrade Path |
|------------------------------------|---|
| Primary Controller/System Upgrades | Only systems running Release 2.2 or later can be directly updated to Release 2.5.2. See the “Upgrading the Controller and Device Firmware” section on page 9. Note We highly recommend upgrading the Cisco SC Residence App to the same release as the Controller to ensure feature compatibility and availability. |
| Secondary Device Upgrades | Secondary Controllers (Release 2.2.x or later) can be updated directly to any upstream version as long as they're added to a project with a Primary Controller that is running the correct version. |
| Mobile Devices | Mobile devices and PCs running Release 2.3 of the Cisco SC Residence App can be directly upgraded to SC Residence App Release 2.5.2. See the “Smart Device and PC Navigator Apps” section on page 8. Note We highly recommend upgrading the Controller and all related devices to the latest release to ensure feature compatibility, availability and support. |

Release 2.5.2 Compatibility Questions

Here are some common questions related to Release 2.5.2.

Q. Do I need to update systems to Release 2.5.2?

- A.** Yes. All Cisco Smart+Connected Residential Solutions should be updated to this latest release, which is the supported release and includes numerous feature and performance updates.

We recommend that installers first familiarize themselves with Release 2.5.2 in a test system.

We also recommend upgrading all drivers and devices included in the project, and upgrading the Cisco SC Residence App to Release 2.5.2.

Q. Which version(s) of Composer do I need for Release 2.5.2?

- A.** Use the Composer release that is the same as the system release to update systems. For example, if the Controller is running Release 2.3, use Composer Pro Release 2.3 to upgrade the system. After the upgrade, use Composer Pro Release 2.5.2 to modify the system.

Release 2.5.2 is not backwards compatible with prior versions of system software. Composer Release 2.5.2 can connect to a system (Controller) running a previous release, but should not be used to modify the system.

Always use the corresponding Composer version to modify and maintain systems. For example:

- Use Composer Release 2.5.2 for any Release 2.5.2 system changes
- Use Composer 2.3.x for any Release 2.3.x system changes
- Use Composer 2.2.x for any Release 2.2.x system changes



Note You can have multiple versions of Composer installed on the same computer at the same time.

Q. Can I continue to install prior release systems?

- A.** Cisco may ship hardware with previous versions pre-installed. You may install these systems, but because of the significant improvements with this release, we recommend that the system be upgraded to Release 2.5.2 before use by the end-user or resident. Release 2.5.2 is the most current and the best-supported release for the Cisco Smart+Connected Residential Solution.

Q. Do I need to update the Cisco SC Residence App to Release 2.5.2?

- A.** Yes, both the Controller software and the mobile app must be running Release 2.5.2 for remote access to work properly (see [Table 3](#)).

Cisco SC Residence App Release 2.5.2 provides access outside the local network, and full compatibility with the Release 2.5.2 features. Although you can connect to a Release 2.5.2 system using the Release 2.3 app, some features may not be fully supported.

Table 3 *Cisco SC Residence App Compatibility*

| | Cisco SC Residence App Release 2.3 | Cisco SC Residence App Release 2.5.2 |
|-----------------------------|---|--|
| Release 2.3 on Controller | Access within the local network only | Access within the local network only |
| Release 2.5.2 on Controller | Access within the local network only | Local network access, AND remote access from external networks including Wi-Fi, 3G or 4G networks. |



Note You can upgrade your mobile app to Release 2.5.2 using Google Play or the iTunes store.

Obtaining Supported Software

Complete the following procedure to obtain software and other information for the following Cisco Smart+Connected Residential Solution products and components:

- [Composer Pro Configuration Software, page 7](#)
- [Smart Device and PC Navigator Apps, page 8](#)
- [Upgrading the Controller and Device Firmware, page 9](#)

Composer Pro Configuration Software

Use the Composer Pro configuration tool to define the devices and features in a Cisco Smart+Connected residence. See the [Cisco Smart+Connected Residential Installation and Configuration Guide](#) for instructions to install, register, and use Composer Pro.

Click one of the following links to access the relevant release for your system:

- [Composer Pro 2.2.2](#)
- [Composer Pro 2.3.0](#)
- [Composer Pro 2.5.0](#)
- [Composer Pro 2.5.2](#)

**Note**

See the “[Release 2.5.2 Compatibility Questions](#)” section on [page 5](#) for more information.

Smart Device and PC Navigator Apps

To upgrade the Cisco SC Residence App to Release 2.5.2, complete the following instructions. These procedures can also be used to install the Release 2.5.2 Cisco SC Residence App for the first time.

Table 4 Smart Device Apps

| Platform | Download Instructions |
|---|---|
| <p>Cisco SC Residence App for PC</p> <p>This app allows the resident to monitor and control their Smart+Connected Residential Solution from a laptop or desktop computer.</p> | <ol style="list-style-type: none"> 1. Complete the following requirements. <ul style="list-style-type: none"> – Release 2.5.0 or later on the Cisco Controller. – Cisco Smart+Connected Smart Device license. – Release 2.5.0 or later of the Cisco SC Residence App. 2. Install the Adobe Air utility. This application allows you to run the Cisco SC Residence App on a Windows, MacOS or Linux PC. <ol style="list-style-type: none"> a. Go to get.adobe.com/air/. b. Follow the on-screen instructions to download and run the installer file. <p>Note Do not install Adobe Air updates after upgrading to Release 2.5.2, even if prompted to do so. This is an error from Adobe Air. Updating Adobe Air after you've installed Release 2.5.2 will make the Cisco SC Residence App non-functional.</p> 3. Install the Cisco SC Residence App. <ol style="list-style-type: none"> a. Go to http://update.control4.com/cisco/2.5.0.240493-cis/win/SCResidencePC.air b. Follow the on-screen instructions to download the installer file. c. Locate and double-click the <code>SCResidencePC</code> file on your PC. d. Follow the on-screen instructions to install the application. |
| <p>Cisco SC Residence Mobile App</p> <p>This app allows the resident to monitor and control their Smart+Connected Residential solution from an iOS or Android smart device, such as a phone or tablet.</p> | <ol style="list-style-type: none"> 1. Complete the following requirements. <ul style="list-style-type: none"> – Release 2.5.0 or later on the Cisco Controller. – Cisco Smart+Connected Smart Device license. – Release 2.5.0 or later of the Cisco SC Residence App. 2. Go to one of the following app portals: <ul style="list-style-type: none"> – Apple products: iTunes – Android products: Google Play. 3. Search for the Cisco SC Residence App. 4. Follow the instructions to install the app. <p>Note If you already have a version of the mobile app running on your device, the new release will take the place of the existing app. After downloading the app, please check your device to ensure all the credentials have transferred over.</p> |



Note

The Cisco SC Residence App is available in English, Korean, simplified Chinese and traditional Chinese.

Upgrading the Controller and Device Firmware

The Cisco Controller firmware (and firmware for other supported devices) contains the latest features, drivers and other improvements for the Cisco Controller and all supported devices included in the Composer Pro project.

To upgrade, use one of the following methods:

- To upgrade a single system, see the “[Upgrading a Single System to Release 2.5.2](#)” section on page 9.
- To upgrade multiple systems using Cisco RMS, see [Cisco Smart+Connected Remote Management Console Administration Guide](#).

Both methods use the following URL to download and install the updates:

http://services.control4.com/Updates-cisco/v2_0/Updates.asmx

Upgrading a Single System to Release 2.5.2

Complete the following procedure to upgrade a single Cisco Controller (and other supported devices in the project).



Note

To upgrade multiple systems using Cisco RMS, see [Cisco Smart+Connected Remote Management Console Administration Guide](#).



Note

IMPORTANT! Release 2.5.2 is a complete system software release. All supported Cisco and third-party devices will receive new software or firmware. The update process will affect all devices in the system.

Procedure

Step 1 Download and install the latest version of the Composer Pro configuration software.

See the following for more information:

- [Composer Pro Configuration Software, page 7](#).
- [Cisco Smart+Connected Residential Installation and Configuration Guide](#)

Step 2 Launch Composer Pro and choose the Cisco Controller.

- Choose **Start > All Programs > Control4 > Composer 2.5.2**
- If prompted, enter your dealer credentials (username and password) to register or renew your Composer license.
- Select “**Director on Local Network**”.
- Highlight the Cisco Controller name (or IP address) and click **Connect**.



Note

If the Cisco Controller does not appear in the list, review the instructions in the [Cisco Smart+Connected Residential Installation and Configuration Guide](#).

- Click **Yes** to add the Cisco Controller to your list of trusted devices.

This step is only necessary the first time you connect your PC to a Cisco Controller.

- f. If prompted to update the device software, click **OK**.



Tip

We recommend that you do not perform the upgrade until all devices have been identified in the project (see [Step 3](#)). This will cause all devices to be upgraded at the same time. If you upgrade the Cisco Controller before the other network devices are added and identified, each device will automatically upgrade when identified the device will be unresponsive during the upgrade process.

Step 3 Verify that the project for the Cisco Controller is complete, and that all IP and ZigBee devices are identified.

See the [Cisco Smart+Connected Residential Installation and Configuration Guide](#) for instructions.

Step 4 Manually trigger the device software update.

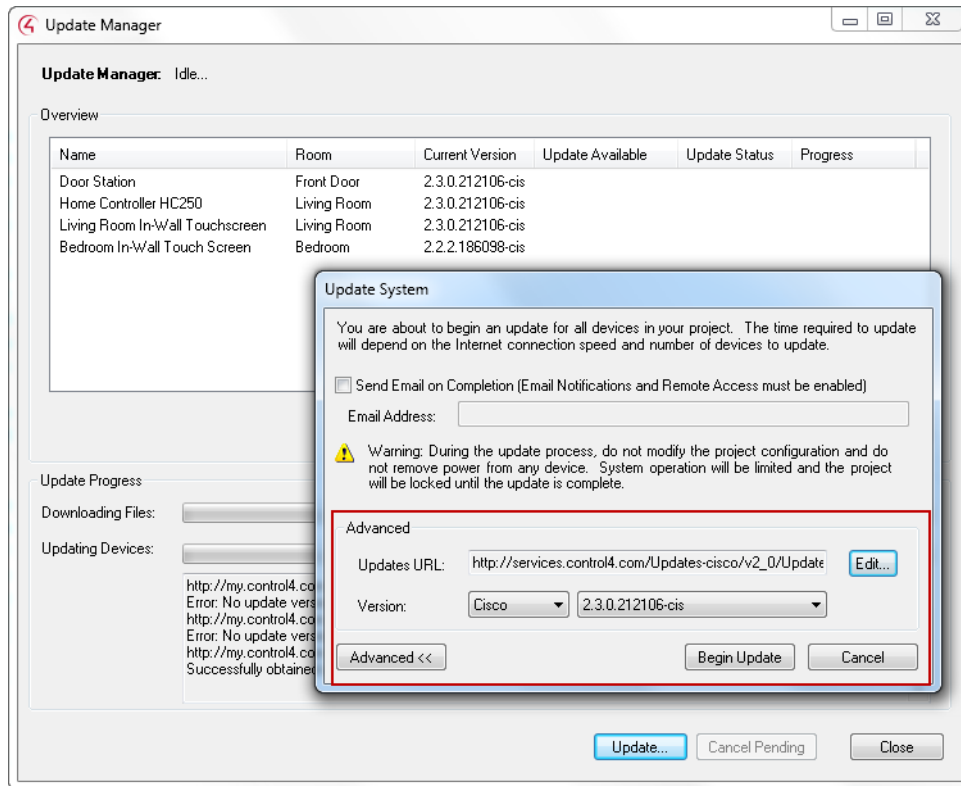


Tip

We recommend performing the update after all devices have been identified in the project. This causes all devices to be upgraded at the same time. If you upgrade the Cisco Controller before the other network devices are added and identified, then each device will automatically upgrade when it comes online and the device may be unresponsive during the upgrade process.

- a. Select the menu **Tools > Update Manager**.
- b. Click **Update**.
- c. Click **Advanced** ([Figure 1-1](#)).

Figure 1-1 Updating the Device Software



- d. Click **Edit**.
- e. Enter the following URL (or verify that it was previously changed):
http://services.control4.com/Updates-cisco/v2_0/Updates.asmx
- f. Click **OK**.
- g. Verify that the version is “Cisco”, and select a version number, if necessary.



Note If the URL is incorrect, the version selections will be blank. You must verify that “Cisco” and a version number appears (Figure 1-1). Failure to update this URL correctly can cause an incorrect software release to load, and the loss of supported services.

- h. Click **Begin Update**.
- i. Follow the on-screen prompts to update all identified devices.

Localization Notes

The Cisco SC Residence App is available in English, Korean, simplified Chinese and traditional Chinese.

End-user localization may not be complete in the following features and applications.

- The Cisco Remote 250 does not support double byte characters required to display Asian character sets.
- Several areas of the Cisco SC Residence App that are not localized are scheduled to be updated in future releases.
- The Navigator user interface is available in English only, but is scheduled to be updated in future releases.

Supported Cisco Devices

The Cisco Smart+Connected Residential Solution supports the following hardware and software Cisco components:

- [Hardware Components, page 11](#)
- [Additional Components, page 13](#)

Hardware Components

The following Cisco hardware products are supported in Release 2.5.2.

**Note**

A deployed Cisco Smart+Connected Residential Solution includes additional Cisco and third-party devices and software. Refer to the device documentation for more information and see the [“Related Documentation”](#) section on page 13.

Table 5 Supported Hardware

| Product | Part Number |
|--|---|
| Cisco Controllers | |
| Cisco Smart+Connected Controller 250 | SCH-CONTROL-250 |
| Cisco Smart+Connected Controller 800 | SCH-CONTROL-800 |
| Rack-Mount Kit for Controller 800 | SCH-RCKMNT-HC800 |
| Cisco Touchscreens | |
| Cisco Smart+Connected 7" In-wall Display | SCH-7IN-TS (-W and -B) |
| Cisco Smart+Connected In-wall Back Box, New Construction | SCH-NEWBB-XXX (-PLS for Plastic or -MET for Metal) |
| Cisco Smart+Connected In-wall Back Box, Retrofit | SCH-RTRBB-XXX (-PLS for Plastic or -MET for Metal) |
| Cisco Smart+Connected Portable Tablet | SCH-TABLET |
| Cisco Video Door Stations | |
| Cisco Smart+Connected Video Door Station External | SCH-VDS-E |
| Cisco Smart+Connected Video Door Station Internal | SCH-VDS-I |
| Cisco Smart+Connected 26-cm External Wi-Fi Antenna for VDS | SCH-VDS-WIFI-26CM |
| Cisco Smart+Connected 3m External Wi-Fi Antenna for VDS | SCH-VDS-WIFI-3M |
| Cisco Smart+Connected Video Door Station Back Box | SCH-VDS-BB |
| Cisco I/O Extender | |
| Cisco Smart+Connected I/O Extender | SCH-IO-EXT-8 |
| Cisco Remotes | |
| Cisco Smart+Connected Remote 150 | SCH-REMOTE-150 |
| Cisco Smart+Connected Remote 250 | SCH-REMOTE-250 |
| Cisco Smart+Connected Remote 150 Recharging Kit ¹ | SCH-REMOTE-150-CHK |
| Cisco Smart+Connected Remote 150 Rechargeable Battery and Cover only | SCH-REMOTE-150-BPK |
| Cisco Smart+Connected Remote 250 Recharging Kit ² | SCH-REMOTE-250-CHK |
| Cisco Smart+Connected Remote 250 Rechargeable Battery and Cover only | SCH-REMOTE-250-BPK |

1. Recharging Kit includes charging station, rechargeable battery and new back cover plate for the remote.

2. Recharging Kit includes charging station, rechargeable battery and new back cover plate for the remote.

Additional Components

The Cisco Smart+Connected Residential Solution Release 2.5.2 also supports the following features.

Table 6 **Additional Components**

| Component | Description and Requirements |
|--|---|
| Cisco Smart+Connected Remote Management Solution <ul style="list-style-type: none"> • Cisco Smart+Connected Remote Management Server • Cisco Smart+Connected Remote Management Console | Requires the following: <ul style="list-style-type: none"> • Cisco RMS Server software and license. • Cisco RMS client license for each primary Cisco Controller. |
| Cisco SC Residence App, Release 2.5.2 | Provides access to the Cisco Smart+Connected Residential Solution using end-user smart devices and PCs. Requires the Cisco Smart+Connected Smart Device License. |

Related Documentation

For more information about the Cisco Smart+Connected Residential products, see the following documents and websites:

| Subject / Document Title | Location |
|---|--|
| General | |
| Product Information and Home Page | www.cisco.com/go/smartconnectedresidential |
| Cisco 1-Year Limited Hardware Warranty Terms | www.cisco.com/go/smartconnectedresidential/warranty |
| Regulatory Compliance and Safety Information for Cisco Smart+Connected Residential Products | www.cisco.com/go/smartconnectedresidential/docs |
| Cisco Support | www.cisco.com/cisco/web/support/ |
| Technical Documentaion | |

| | |
|---|--|
| <p>Installation and Configuration Cisco Smart+Connected Residential Installation and Configuration Guide</p> <p>Cisco RMS Installation and Administration Cisco Smart+Connected Remote Management Console Administration Guide Cisco Smart+Connected Remote Management Server Installation Guide</p> <p>Reference Guides Cisco Smart+Connected Controller 200 Reference Guide Cisco Smart+Connected Controller 250 Reference Guide Cisco Smart+Connected Controller 800 Reference Guide Cisco Smart+Connected 7" In-wall Display Reference Guide Cisco Smart+Connected Portable Tablet Reference Guide Cisco Smart+Connected I/O Extender Reference Guide Cisco Smart+Connected Universal Remote 150 Reference Guide Cisco Smart+Connected Universal Remote 250 Reference Guide Cisco Smart+Connected Video Door Station Reference Guide</p> | <p>www.cisco.com/go/smartconnectedresidential/docs</p> |
| <p>Cisco Smart+Connected Residential Licensing and Registration Guide</p> | <p>See your Cisco representative or partner for more information.</p> |
| <p>Smart Device Compatibility and other information: Cisco Smart+Connected Smart Device License for Real Estate Developers</p> | <p>www.cisco.com/go/smartconnectedresidential</p> |
| <p>Composer Pro User Guide</p> | <p>http://www.control4.com/documentation/Composer_Pro_User_Guide/index.htm</p> |

Cisco and the Cisco logo are trademarks or registered trademarks of Cisco and/or its affiliates in the U.S. and other countries. To view a list of Cisco trademarks, go to this URL: www.cisco.com/go/trademarks. Third-party trademarks mentioned are the property of their respective owners. The use of the word partner does not imply a partnership relationship between Cisco and any other company. (1110R)

Any Internet Protocol (IP) addresses and phone numbers used in this document are not intended to be actual addresses and phone numbers. Any examples, command display output, network topology diagrams, and other figures included in the document are shown for illustrative purposes only. Any use of actual IP addresses or phone numbers in illustrative content is unintentional and coincidental.

© 2013 Cisco Systems, Inc. All rights reserved.

