



# Installing Cisco StadiumVision Mobile Software

---

This module provides instructions for installing Cisco StadiumVision Mobile Reporter or Cisco StadiumVision Mobile Streamer software on both the Cisco UCS C220 and Cisco UCS C200 servers, and contains the following sections:

- [Before You Begin, page 1](#)
- [Prepare the Install Media, page 2](#)
- [Performing the Installation—Network Configuration, page 7](#)
- [What To Do Next—Post-Installation Steps, page 10](#)

## Before You Begin

Be sure that you understand and have met the following prerequisites before you begin to install Cisco StadiumVision Mobile hardware.

## Supported Servers

Cisco StadiumVision Mobile Reporter and Cisco StadiumVision Mobile Streamer are supported on the following platforms:

- Cisco UCS C220—uses Cisco Integrated Management Controller (CIMC) to perform the installation
- Cisco UCS C200—uses a DVD to perform the installation

## Preparing for Installation

This section describes the prerequisite actions before performing an installation. Perform the following action prior to installation:

- Contact [stadiumvision-pm@cisco.com](mailto:stadiumvision-pm@cisco.com) if you need the full install ISO file for a fresh install.

Have the following information available before installation:

- IPv4 Internet address
- Netmask
- Gateway

- DNS name server
- NTP server
- Hostname
- Proxy if direct internet access is not available

**Note**

---

Static network addressing should always be used.

---

## Set up hardware and connect cabling

- Set up the server hardware  
See the [Cisco UCS C200 Server Installation and Service Guide](#) or [Cisco UCS C220 Server Installation and Service Guide](#) for additional installation information.
- Connect a monitor, keyboard, and mouse to the Cisco UCS C220 or Cisco UCS C200.
- Connect the Cisco UCS C220 or Cisco UCS C200 to the network using the **eth0** Ethernet port on the rear panel.
- Connect the power cord.

## Prepare the Install Media

This section provides a high-level overview of the installation process, with links to platform-specific procedures in the subsections that follow. lists the platform, type of media, and file to use to perform a fresh installation.

**Cisco StadiumVision Mobile Fresh Installation Media and ISO File Type**

Product	Platform	Media	File to Use
Cisco StadiumVision Mobile Streamer or Cisco StadiumVision Mobile Reporter	Cisco UCS C220	Hard drive	Full ISO
	Cisco UCS C220	CIMC remote mount	
	Cisco UCS C200	DVD	

## Installation Guidelines

When using a Cisco UCS C220 server, observe the following guidelines before starting the installation:

- Do **not** alter the RAID configuration prior to installation
- Verify the boot order in the BIOS (by pressing **F2** while booting) prior to installation

**Note**

If Cisco StadiumVision Mobile Streamer Release 1.1 was previously installed and upgraded to Release 1.2 (using a Release 1.2 upgrade RPM), you will need to install a full ISO to upgrade to Release 1.3.

Possible pseudo file corruption may result if a Cisco StadiumVision Mobile Streamer Release 1.3 upgrade ISO is used.

**Caution**

A full install will erase the Cisco StadiumVision Mobile Streamer configuration. Perform a backup prior to installing to preserve configuration data. See the *Cisco StadiumVision Mobile Streamer Administration Guide* for the manual backup procedure.

## A. Install from the hard drive—UCS C220 Only

Use the following steps to perform the installation from the hard drive:

- Step 1** Be sure the CIMC firmware is up to date; configure CIMC (see [“Appendix A: CIMC Configuration and Firmware Upgrade Guidelines on the Cisco UCS C220 Server”](#)).
- Step 2** Power on the server.
- Step 3** When the server console shows a login prompt proceed to the [“Performing the Installation—Network Configuration”](#) section on page 7.

**Note**

Cisco StadiumVision Mobile Reporter and Cisco StadiumVision Mobile Streamer come preinstalled with a released image of Cisco StadiumVision Mobile software. Depending on the timing of your hardware shipment with available software releases, this image might not be the latest released version. Therefore, after you install your hardware, it is important that you power on and access the Cisco StadiumVision Mobile software to verify the software version. As necessary, you can upgrade the software following the guidelines in this guide and in the Cisco StadiumVision Mobile Release Notes.

## B. Installing via CIMC—UCS C220 Only

Use this method if method A is unavailable.

- Step 1** Verify that CIMC firmware and BIOS are up to date; configure CIMC (see “[Appendix A: CIMC Configuration and Firmware Upgrade Guidelines on the Cisco UCS C220 Server](#)”).




**Note** At this release, 1.5.1 firmware version is the minimum tested version.

- Step 2** Connect a second ethernet cable to the CIMC ethernet port marked **M**.

- Step 3** Power on the server.

- Step 4** Start CIMC and perform a virtual DVD mount:

- a. Access CIMC from a web browser:  
[https://ip\\_address/login.html](https://ip_address/login.html)
- b. Click the **Add Exception** button.



**This Connection is Untrusted**

You have asked Firefox to connect securely to **10.194.168.139**, but we can't confirm that your connection is secure.

Normally, when you try to connect securely, sites will present trusted identification to prove that you are going to the right place. However, this site's identity can't be verified.

**What Should I Do?**

If you usually connect to this site without problems, this error could mean that someone is trying to impersonate the site, and you shouldn't continue.

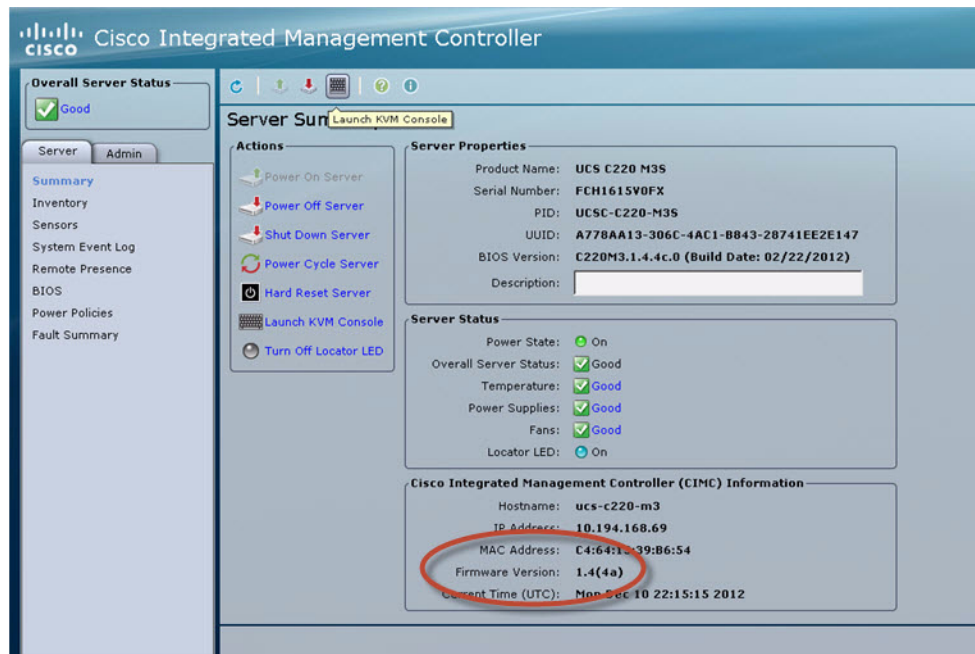
► **Technical Details**

▼ **I Understand the Risks**

If you understand what's going on, you can tell Firefox to start trusting this site's identification. **Even if you trust the site, this error could mean that someone is tampering with your connection.**

Don't add an exception unless you know there's a good reason why this site doesn't use trusted identification.

- c. Click **Confirm Security Exception** to get to the CIMC login page. The default login credentials are:  
user: admin  
password: password
- d. Click on the **Launch KVM Console** at the top of the CIMC interface to launch the KVM console.



The KVM tab provides a view of the system diagnostics or command prompt execution. The Virtual Media tab provides the virtual CD/DVD setup for ISO installation.

- e. Click on Add Image tab under the KVM Console Virtual Media tab.
- f. Navigate to the ISO file.

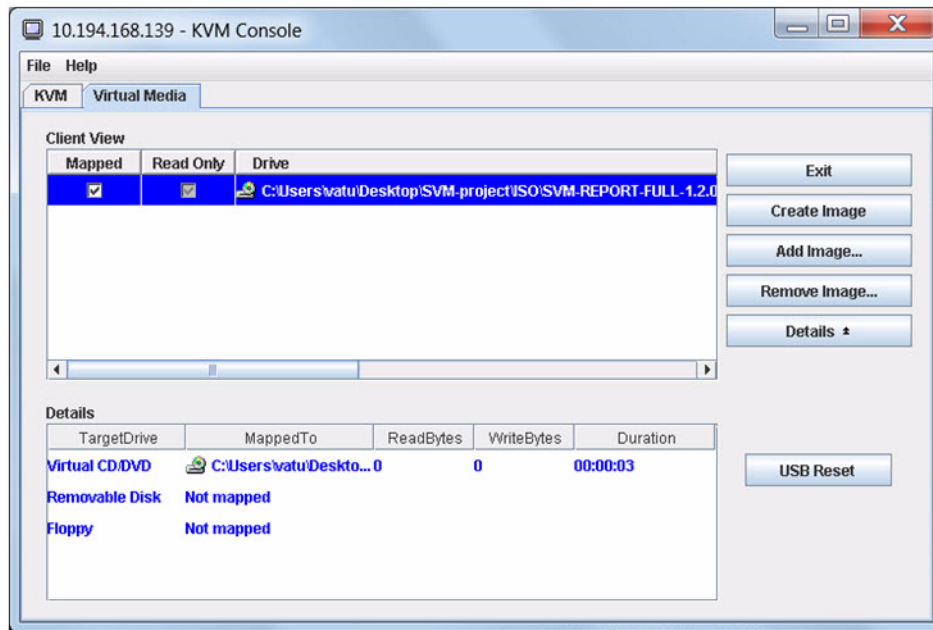
**Note**

CIMC can experience slow performance. If slow performance occurs, clear the browser cache.

**Note**

If the installation seems to hang on a Cisco UCS C220, you may need to restart the installation by remapping the ISO image, and power cycling the Cisco UCS C220 server.

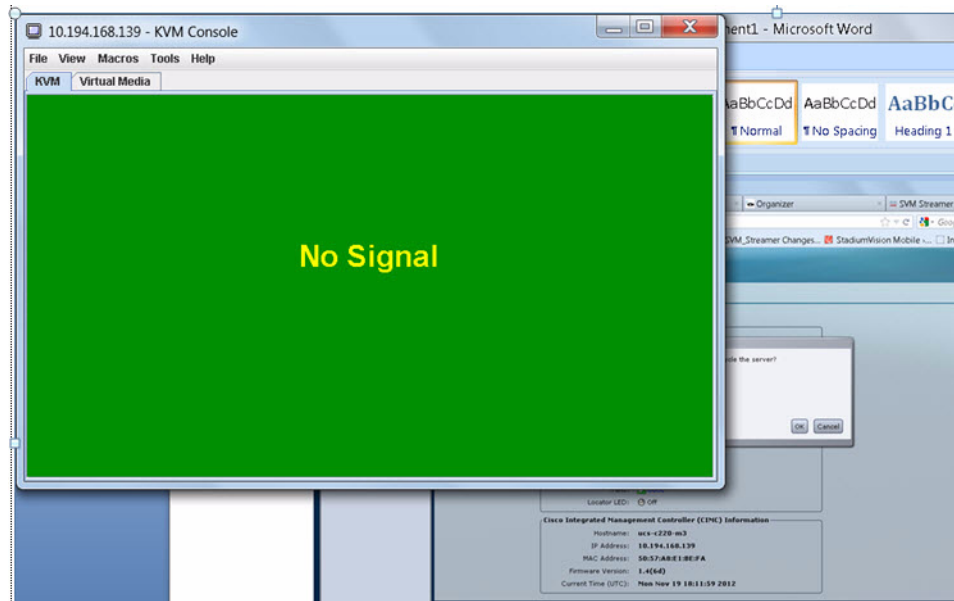
- g. Click the check box for the Mapped option under Client View to select the ISO source.
- h. Confirm that the Virtual CD/DVD has been added under the Virtual Media tab, Virtual CD/DVD.



- i. Double click on **Virtual CD/DVD** and observe the read bytes counter increasing (this refreshes the read bytes).
- j. Close the KVM tab to start viewing the installation process.
- k. On the CIMC interface under Server Summary, click **Power Cycle Server** to start the installation process.



- l. On the KVM Console/KVM terminal, confirm that the system is restarting and booting up from the Virtual CD/DVD.



- Step 5** When the server console shows a login prompt proceed to the “Performing the Installation—Network Configuration” section on page 7.

## C. Installing from DVD—UCS C200 Only

Use this method if your server is a Cisco UCS C200.

- Step 1** Obtain the full ISO image from TAC, or by emailing [stadiumvision-pm@cisco.com](mailto:stadiumvision-pm@cisco.com), and burn it to a DVD.
- Step 2** Insert a DVD into the drive and power on the server.
- After the server boots from the DVD, follow the prompts.
  - The installation process begins. When the installation is complete, the Cisco logo appears.
  - Press **F6** to continue booting
- Step 3** When the server console shows a login prompt proceed to the “Performing the Installation—Network Configuration” section on page 7.

## Performing the Installation—Network Configuration

This part of the installation process is common to all platforms and all Cisco StadiumVision Mobile software. Use the following procedure after performing the steps in any of the preceding sections:

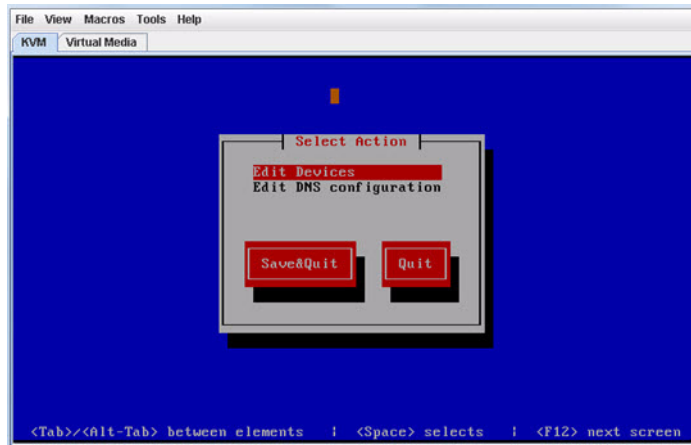
- Step 1** Select **Network Configuration** from the menu.



**Note**

The network configuration window displays for approximately sixty minutes. If the window disappears, continue the network configuration via the TUI.

**Step 2** Select **Edit Devices** and press the Enter key.



**Step 3** Select **eth0** and press the Enter key.

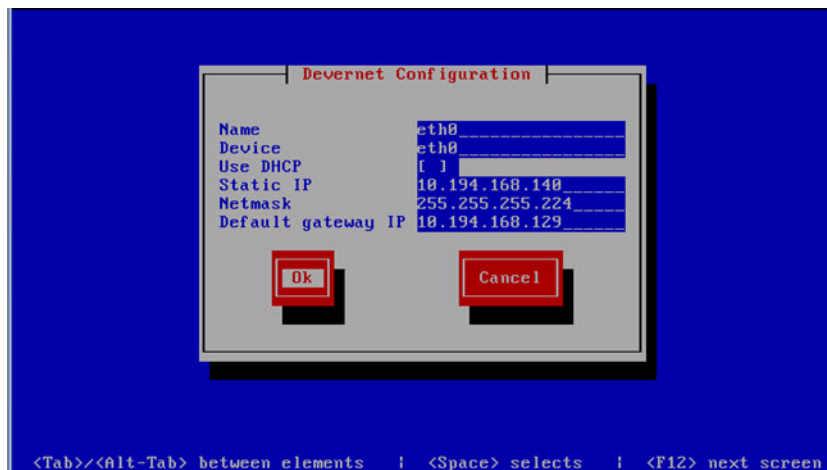
**Step 4** In the Ethernet Configuration, enter the network information. When done, select **OK** and press Enter.

**Note**

The Linux screen is mislabeled "Devernet Configuration."

**Note**

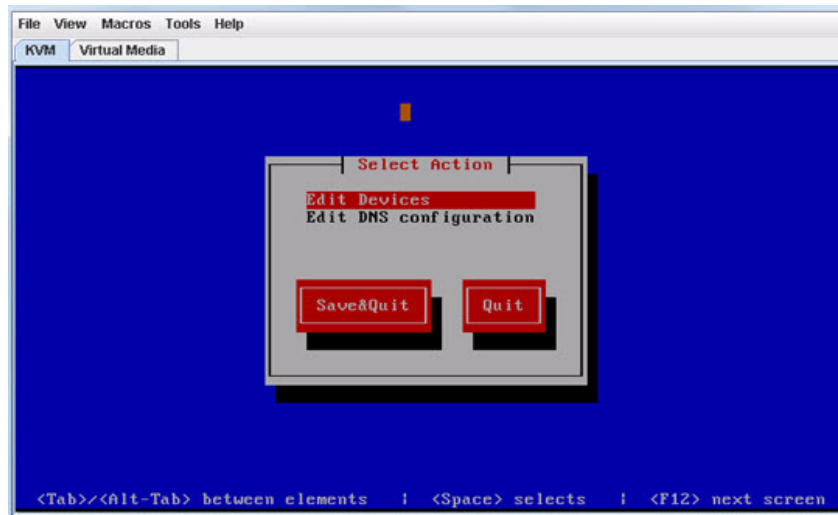
The Cisco StadiumVision Mobile Streamer or Cisco StadiumVision Mobile Reporter must use a static IP address.



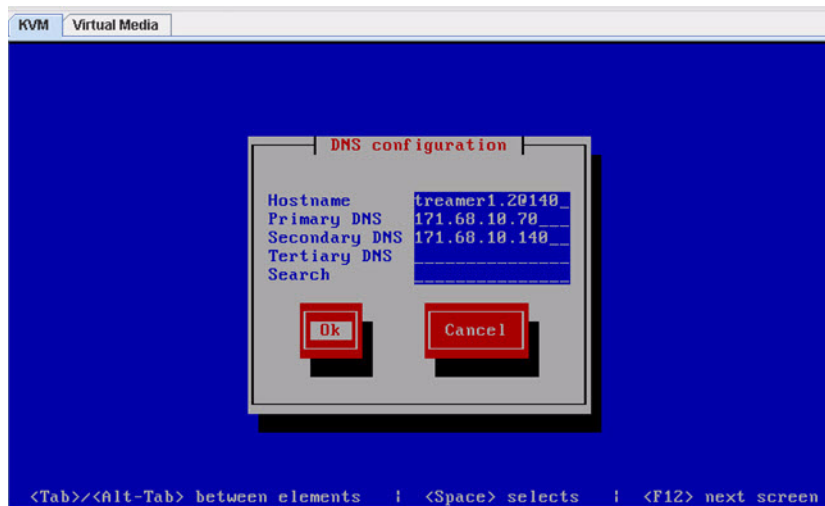
**Step 5** Select **OK** and press the Enter key.

**Step 6** Select **Edit DNS configuration** and press Enter.





**Step 7** Enter DNS information. When done, select **OK**, and press Enter.



**Note** Do not use a period ('.') as part of the hostname.

**Step 8** Select **Save & Quit** and press the Enter key.

**Step 9** Select **Exit** and press the Enter key.

After this step, the Cisco StadiumVision Mobile software installs and the system reboots. This process takes up to 30 minutes. The installation should be completed. Validate the installation by logging into the StadiumVision Mobile Streamer or StadiumVision Mobile Reporter using the credentials listed in [Table 1](#).

## What To Do Next—Post-Installation Steps

This section describes procedures to perform after successfully installing Cisco StadiumVision Mobile software, and contains the following topics:

- [Log into the TUI, page 10](#)
- [Set the time zone, page 11](#)
- [Set the server date and time, page 11](#)
- [Configure NTP, page 11](#)

Table 1 lists the login credentials for the various Cisco StadiumVision Mobile components.

**Table 1** Login Credentials

Device	Access	Usage	User Name and Password
Cisco StadiumVision Mobile Reporter	<a href="http://server ip address">http://server ip address</a>	Client report login	'marketing' - marketing charts 'admin' - server administration chart default password: cisco!123
Cisco StadiumVision Mobile Streamer	<a href="http://server ip address">http://server ip address</a>	Configuration	GUI: Log in as 'admin' default password: cisco!123
Cisco StadiumVision Mobile Reporter or Cisco StadiumVision Mobile Streamer	<a href="SSH server ip address">SSH server ip address</a>	Text Utility Interface (TUI)	username = installer password = cisco!123
Cisco Integrated Management Controller (CIMC) running on a Cisco UCS C220	<a href="http:// CIMC ip address">http:// CIMC ip address</a>	Mount install media	'admin' - CIMC initial configuration default password: password

### Log into the TUI

To access the TUI, you need either physical console access or an SSH client such as PUTTY. Log in from the console or over SSH with the following credentials, using the IP address of the Cisco StadiumVision Mobile Reporter or Cisco StadiumVision Mobile Streamer:

```
username = installer
password = cisco!123
```

## Set the time zone



**Note** Set the time zone for both the Cisco StadiumVision Mobile Reporter and the Cisco StadiumVision Mobile Streamer.

- Step 1** Log into the TUI using the procedure in the [“Log into the TUI”](#) section.
- Step 2** In the TUI, go to System Settings, Date and Time Settings, and Change timezone.
- Step 3** Choose the appropriate timezone from the list and enter the corresponding number.

## Set the server date and time



**Note** Set the server date and time for both the Cisco StadiumVision Mobile Reporter and the Cisco StadiumVision Mobile Streamer.

- Step 1** Log into the TUI using the procedure in the [“Log into the TUI”](#) section.
- Step 2** In the TUI, go to System Settings, Date and Time Settings, and Set System date.
- Step 3** Enter the date using the following format:

MMDDHHMIYYYY for Month Day Hour Minute Year

## Configure NTP



**Note** Configure NTP for both the Cisco StadiumVision Mobile Reporter and the Cisco StadiumVision Mobile Streamer.

- Step 1** Log into the TUI using the procedure in the [“Log into the TUI”](#) section with the following credentials:
- ```
User: installer  
Password: cisco!123
```
- Step 2** The TUI (Text User Interface) will appear on the screen.
- Step 3** Select **Configure NTP** from the System Settings/Date and Time Settings menu:



**Note** The default time zone is Eastern Standard Time (EST).

- Step 4** Set the NTP server address.



**Note** For the Cisco StadiumVision Mobile Reporter, it is critical that NTP be properly configured in order to provide accurate reports.

```

                .-''''.  |  ''''.''''.  |  ''''.''''.
                C i s c o  S y s t e m s
StadiumVision Mobile Reporter Configuration Menu

Hostname:          SVM-00
IP address:        10.194.168.131
Software version:  1.2.0 build 491           Time: Tue Jan 29 08:54
-----

Main Menu > System Settings > Date and Time Settings

Please choose one of the following menu options:

      a) Set system date
      b) Change timezone
      c) Set NTP server address
      d) Modify NTP configuration file
      R or < or ,) Return to prior menu

```