

[Solutions](#) [Products](#) [Ordering](#) [Support](#) [Partners](#) [Training](#) [Corporate](#)

Tech Notes



# JRE Download, Installation and Compatible Matrix with CTC for ONS 15454 and 15327

[TAC Notice: What's Changing on TAC Web](#)

Document ID: 63284

## Contents

[Introduction](#)

[Prerequisites](#)

[Requirements](#)

[Components Used](#)

[Conventions](#)

[JRE Compatibility with ONS 15454 and 15327](#)

[Download JRE](#)

[Install JRE](#)

[NetPro Discussion Forums - Featured Conversations](#)

[Related Information](#)

Help us help you.

Please rate this document.

- ☐ Excellent
- ☐ Good
- ☐ Average
- ☐ Fair
- ☐ Poor

This document solved my problem.

- ☐ Yes
- ☐ No
- ☐ Just browsing

Suggestions for improvement:

(256 character limit)

Send

## Introduction

This document describes the Java Runtime Environment (JRE) compatibility with Cisco Transport Controller (CTC) in ONS 15454 and 15327. This document also demonstrates the download and installation of the JRE on the PC.

## Prerequisites

### Requirements

Cisco recommends that you have knowledge of these topics:

- Cisco Transport Controller
- Cisco ONS 15454 and 15327

**Note:** If you use version 3.4.0, or an earlier release of Cisco ONS 15454 System Software, Cisco recommends that you download the modified Java Policy, and run the relevant java script. In order to do so, you must be a [registered user](#). Complete these steps:

1. Go to the [Cisco Software Download](#) ( [registered](#) customers only) web page.
2. Scroll down the page, and click the **JavaPolicyInstall.zip** link. The Software Download page appears.
3. Click the **JavaPolicyInstall.zip** link. The login dialog box appears.
4. Type your user name and password to log in. The File Download dialog box appears.
5. Click **Open**. The zip file opens.
6. Click **JavaPolicyInstall.exe** to start the installation.

## Components Used

The information in this document is based on these software and hardware versions:

- Cisco Transport Controller

The information in this document was created from the devices in a specific lab environment. All of the devices used in this document started with a cleared (default) configuration. If your network is live, make sure that you understand the potential impact of any command.

## Conventions

Refer to [Cisco Technical Tips Conventions](#) for more information on document conventions.

## JRE Compatibility with ONS 15454 and 15327

CTC software is preloaded on the XTC cards for the ONS 15327 and on TCC2/TCC+ cards for the ONS 15454. Therefore, you do not need to install software on the XTC or TCC2/TCC+ cards. In order to use CTC for the ONS 15327 or 15454, your computer must have a web browser with the correct Java Runtime Environment.

These tables show the compatible matrix for the ONS 15454 SONET, ONS 15454 SDH and ONS 15327:

**Table 1 – JRE Compatibility with CTC for the ONS 15454 SONET**

ONS Software Release	JRE 1.2.2 Compatible	JRE 1.3 Compatible	JRE 1.4 Compatible
ONS 15454 Release 2.2.1 and earlier	Yes	No	No
ONS 15454 Release 2.2.2	Yes	No	No

ONS 15454 Release 3.0	Yes	Yes	No
ONS 15454 Release 3.1	Yes	Yes	No
ONS 15454 Release 3.2	Yes	Yes	No
ONS 15454 Release 3.3	Yes	Yes	No
ONS 15454 Release 3.4	No	Yes	No
ONS 15454 Release 4.0	No	Yes	No
ONS 15454 Release 4.1	No	Yes	No
ONS 15454 Release 4.5	No	Yes	No
ONS 15454 Release 4.6	No	Yes	Yes
ONS 15454 Release 4.7	No	No	Yes

**Table 2 – JRE Compatibility for ONS 15454 SDH**

<b>ONS Software Release</b>	<b>JRE 1.2.2 Compatible</b>	<b>JRE 1.3 Compatible</b>	<b>JRE 1.4 Compatible</b>
ONS 15454 SDH Release 3.3	Yes	Yes	No
ONS 15454 SDH Release 3.4	No	Yes	No
ONS 15454 SDH Release 4.0	No	Yes	No
ONS 15454 SDH Release 4.1	No	Yes	No
ONS 15454 SDH Release 4.5	No	Yes	No


**Table 3 – JRE Compatibility for ONS 15327**

<b>ONS Software</b>	<b>JRE 1.2.2</b>	<b>JRE 1.3</b>	<b>JRE 1.4</b>
-------------------------	------------------	----------------	----------------

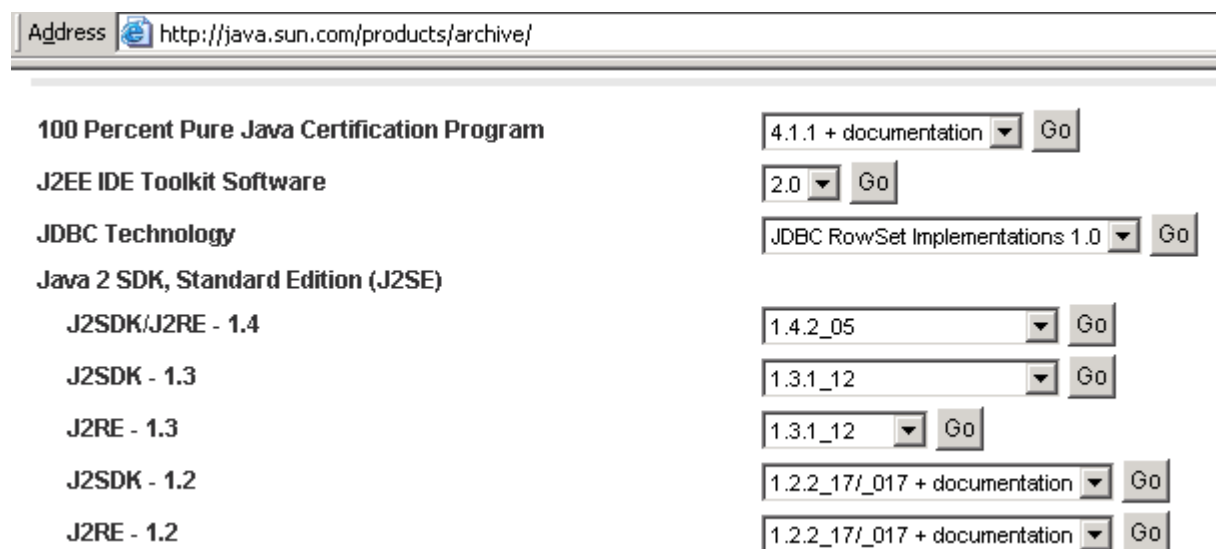
Release	Compatible	Compatible	Compatible
ONS 15327 Release 1.0	Yes	No	No
ONS 15327 Release 1.0.1	Yes	Yes	No
ONS 15327 Release 3.3	Yes	Yes	No
ONS 15327 Release 3.4	No	Yes	No
ONS 15327 Release 4.0	No	Yes	No

## Download JRE

Complete these steps to download JRE from the Sun Microsystems web site:

1. Open a browser window, and type <http://java.sun.com/products/archive/>  in the address bar to go to the Sun Microsystems web site.
2. Select the JRE release through the corresponding dropdown list.

**Figure 1 – Select the JRE Release**



3. Click **Go** (see [Figure 1](#)).
4. Select the **Download** link in the **JRE** column (see [Figure 2](#)).

**Figure 2 – Sun Microsystems: Download JRE Page**

## Archive - Java Technology Products Download

### JAVA™ 2 PLATFORM STANDARD EDITION

Java™ 2 SDK, Standard Edition (J2SE™), v 1.3.1\_12

[Archive Home page](#)

Sun is providing the products available below as a courtesy to developers for problem resolution. The products longer supported under standard support contracts. These products are down-revision products that may have them. Sun in no way recommends these products be used in a live, production environment. Any use of product assumes no responsibility for any resulting problems.

Download J2SE v 1.3.1_12	JRE	SDK
Windows/Linux/Solaris SPARC/Solaris x86	<a href="#">DOWNLOAD</a>	<a href="#">DOWNLOAD</a>
Installation Instructions	<a href="#">VIEW</a>	<a href="#">VIEW</a>
Solaris OS Patches	Solaris SPARC	Solaris Intel
Patches	<a href="#">DOWNLOAD</a>	<a href="#">DOWNLOAD</a>

This link displays a secure page where the JDK License agreement appears.

5. Select **Accept the agreement** to continue.
6. Select JRE, on the basis of your platform to start the download process. [Figure 3](#) shows the **JRE** download option for Windows (all languages, including English), Multi-language.

**Figure 3 – Select Java 2 JRE, Standard Edition 1.3.1\_12 to Download**

Java(TM) 2 Runtime Environment, Standard Edition 1.3.1_12		Click below to download
Windows Platform		
	<a href="#">Windows (U.S. English), English (j2re-1_3_1_12-windows-i586.exe, 5.1 MB)</a>	
	<a href="#">Windows (all languages, including English), Multi-language (j2re-1_3_1_12-windows-i586-i.exe, 7.1 MB)</a>	
Linux Platform		
	<a href="#">RPM in self-extracting file, English (j2re-1_3_1_12-linux-i586.rpm.bin, 14.1 MB)</a>	
	<a href="#">self-extracting file, English (j2re-1_3_1_12-linux-i586.bin, 14.1 MB)</a>	
Solaris SPARC Platform		
	<a href="#">self-extracting file, English (j2re-1_3_1_12-solaris-sparc.sh, 15.1 MB)</a>	
Solaris x86 Platform		
	<a href="#">self-extracting file, English (j2re-1_3_1_12-solaris-i586.sh, 13.1 MB)</a>	

## Install JRE

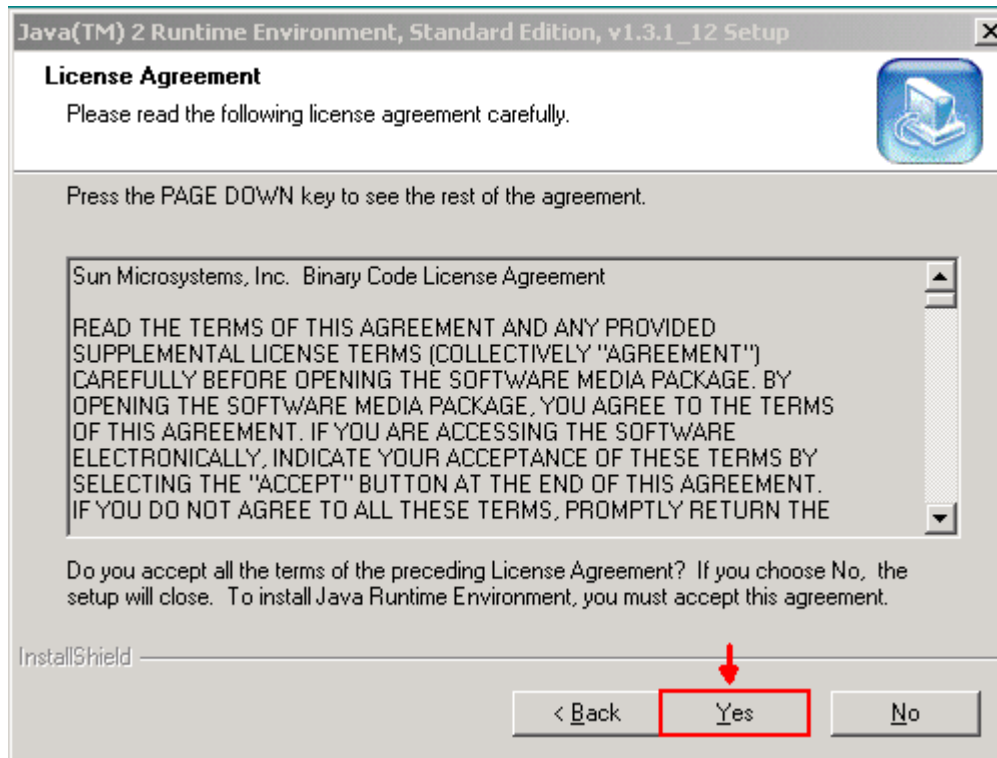
Complete these steps to install the new version of JRE:

1. Run the file you just downloaded.

The JRE Setup process launches. The JRE license agreement appears (see [Figure 4](#)).

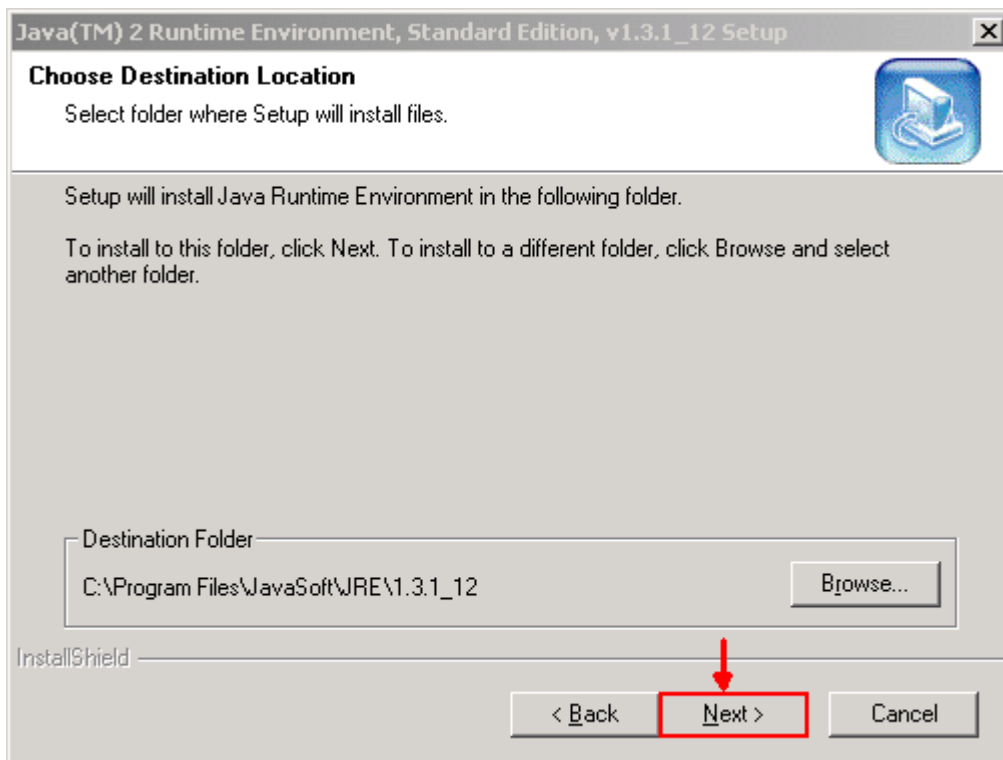
2. Read the agreement, and if you agree, click **Yes**.

**Figure 4 – License Agreement**



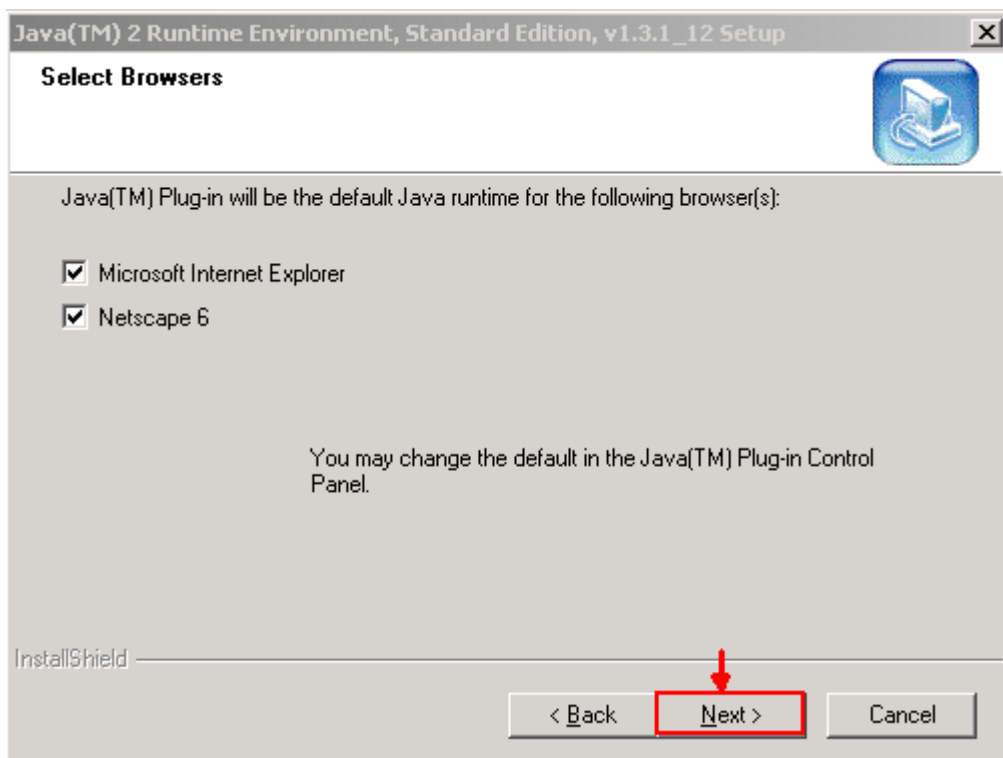
3. Install JRE to the suggested directory, and click **Next** (see [Figure 5](#)).

**Figure 5 – Choose Destination Location**



4. Select the browser you use (see [Figure 6](#)).

**Figure 6 – Select Browsers**



The JRE installs. When the installation is complete, the installer exits automatically.

## NetPro Discussion Forums - Featured Conversations

Networking Professionals Connection is a forum for networking professionals to share questions, suggestions, and information about networking solutions, products, and technologies. The featured links are some of the most recent conversations available in this technology.

NetPro Discussion Forums - Featured Conversations for Optical
Service Providers: Optical Networking
<a href="#">Help with installing ZX GBICs under 25 km</a> - Jan 13, 2006
<a href="#">NEWPTRs, NSEs and PSEs at same rate</a> - Jan 11, 2006
<a href="#">ONS 15454 SDH with 2 ML cards connected to the same RPR</a> - Jan 3, 2006
<a href="#">15454 Ethernet Protection &amp; Provisioning</a> - Jan 3, 2006
<a href="#">back to back ONS15310 CL</a> - Dec 29, 2005
Service Providers: Metro
<a href="#">Does Cisco7200VXR support feature Q-in-Q VLAN tag termination?</a> - Jan 10, 2006
<a href="#">Best practises for Hub and spoke Metro Etherent network</a> - Jan 10, 2006
<a href="#">very urgent</a> - Jan 10, 2006
<a href="#">CPUHOG</a> - Jan 8, 2006
<a href="#">Best practices for Voice over MetroRing</a> - Jan 8, 2006

## Related Information

- [Technical Support & Documentation - Cisco Systems](#)

<a href="#">Home</a>	<a href="#">How to Buy</a>	<a href="#">Login</a>	<a href="#">Profile</a>	<a href="#">Feedback</a>	<a href="#">Site Map</a>	<a href="#">Help</a>
----------------------	----------------------------	-----------------------	-------------------------	--------------------------	--------------------------	----------------------

All contents are Copyright © 1992-2006 Cisco Systems, Inc. All rights reserved. [Important Notices](#) and [Privacy Statement](#).

Updated: Jan 15, 2006

Document ID: 63284