



# Unified CM 8.6(1a) Upgrade/Migration of Engineering Special and Service Update テスト結果サマリ

2011年11月25日

# Component Matrix

Category	Component	Hardware	Version
UCS Servers	Cisco C-series Chassis	Cisco C-series	1.4(1m)
Hypervisor	ESXi host on Blade Server	N/A	ESXi 4.1
MCS	Unified Communications Manager	7845 H2 7835 I2 7845 I2	
Voice Gateway	IOS	Voice gateways 3945 Voice Gateway 2851	15.1(4)M1
Switch	Access Switch	Cisco Catalyst 3750	c3750e-universalk9-mz.122-58.S E.Bin

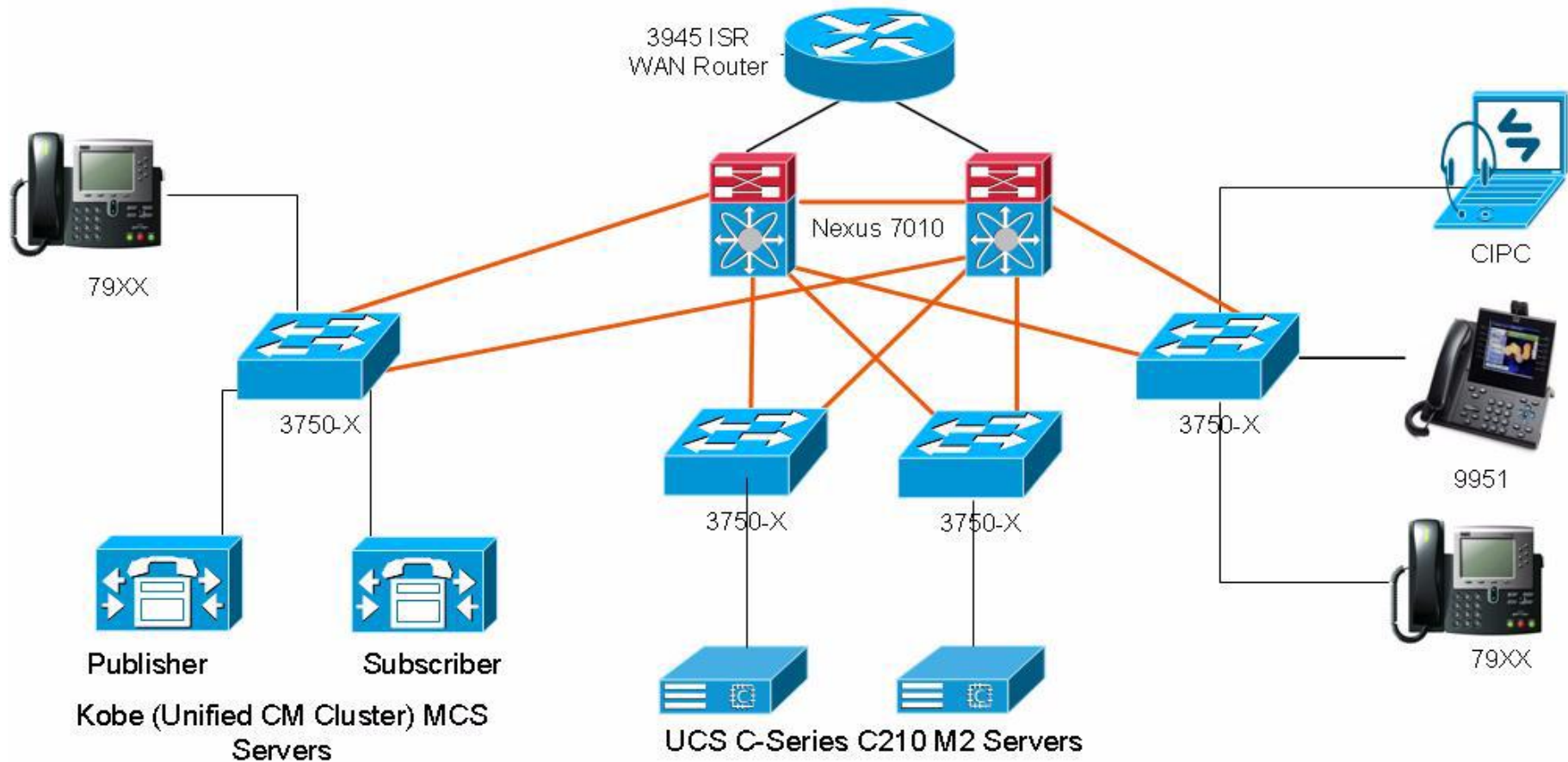
# ES -Upgrade Path to Unified CM 8.6(1a)

Engineering Special	Intermediate Release Set	UCS to MCS Release Set	Upgrade Type
5.1.(3)	7.1(5)	8.5(1)	Multi-Stage
6.1(3)	7.1(5)	8.5(1)	Multi-Stage
6.1(5)	Nil	8.5(1)	Multi-Stage
7.1(3)	Nil	8.5(1)	Multi-Stage
7.1(5)	Nil	Nil	Single-Stage

# SU -Upgrade Path to Unified CM 8.6(1a)

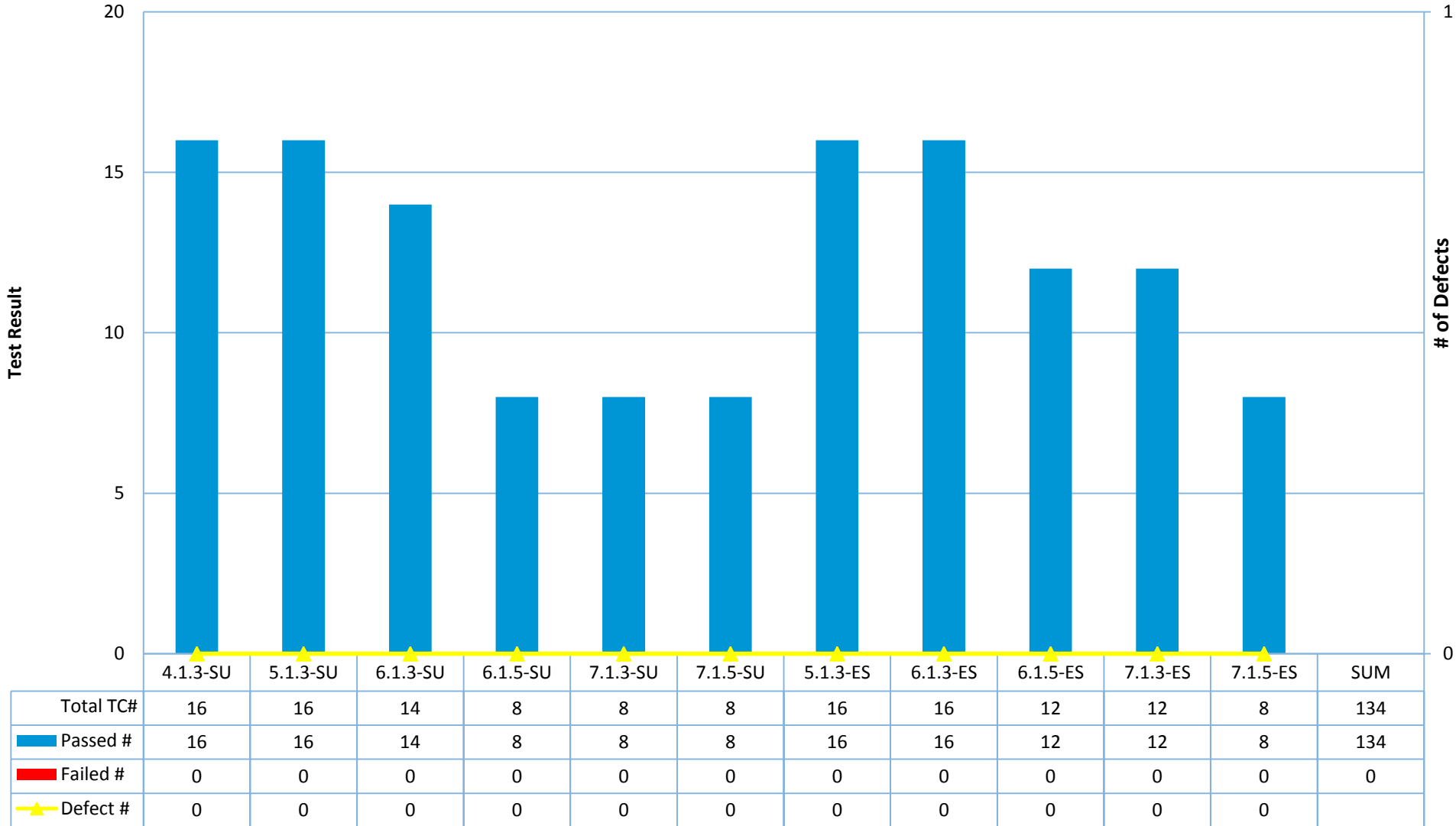
Service Update	Intermediate Release Set	UCS to MCS Release Set	Upgrade Type
4.1(3)	7.1(3)	8.5(1)	Multi-Stage
5.1.(3)	7.1(5)	8.5(1)	Multi-Stage
6.1(3)	7.1(5)	Nil	Multi-Stage
6.1(5)	Nil	Nil	Single-Stage
7.1(3)	Nil	Nil	Single-Stage
7.1(5)	Nil	Nil	Single-Stage

# MCS to UCS Upgrade Topology



- 10Gbps Links
- Ethernet or PoE Connection

# Test Results



# Limitations

S.No	Version affected	Defect ID	Description
1	5.1.3SU	CSCsz83337	COP file:Free up active space by removing large phone guide pdfs (which was the root cause of not enough disk space available during locale install in upgrade from 5.1.3SU to 7.1(3) interim release)
2	5.1.3.7109.1 ES	CSCsg02221	Unified Communications Manager Subscriber installation fails if Publisher hostname is given in uppercase and numerals.
3	4.1(3)_SR8a	CSCsi48359	Hankaku-Katakana(single-byte) characters in alerting name and few other fields are garbled after migrating from 4.1(3) to 7.1(3) using DMA 7.1(3)