



# 日本市場向け Cisco Collaboration Systems Release 11.5 FCS Validation and Upgrade Testing テスト結果サマリ

シスコシステムズ合同会社

2016年10月

# コンポーネント一覧 (1)

カテゴリ	コンポーネント		バージョン
Call Control	Cisco Unified Communications Manager	Version	11.5.1.10000-6
		Locale	11.5.1.1000-1
		Dial Plan	3-1-9.JP
	Cisco TelePresence Video Communication Server (VCS)	Version	X8.8
		Locale	vcs-lang-ja-jp_8.5-1_amd64.tlp
	Cisco TelePresence Video Communication Server Expressway (VCS Expressway)	Version	X8.8
		Locale	vcs-lang-ja-jp_8.5-1_amd64.tlp
	Cisco TelePresence Video Communication Server Expressway on VM	Version	X8.8
		Locale	vcs-lang-ja-jp_8.5-1_amd64.tlp

# コンポーネント一覧 (2)

カテゴリ	コンポーネント		バージョン
Applications	Cisco Unified Communications Manager IM and Presence Service	Version	11.5.1.10000-4
		Locale	11.5.1.1000-1
Voice Mail and Unified Messaging	Cisco Unity Connection	Version	11.5.1.10000-6
		Locale	11.5.0.1-1
Network Management	Cisco Prime Collaboration Provisioning	Version	11.5.0.607
	Cisco Prime Collaboration Assurance and Analytics	Version	11.5.0.69091
Upgrade	Cisco C-series Servers	UCSC-C24-M3S	2.0(9c)
	Hypervisor	ESXi host on Blade server	ESXi 5.5.0
	Voice Gateway 2921	IOS	15.6.2T
	Voice Gateway 2951		
	Access Switch	Cisco 3750	15.0.2-SE 5
	Cisco Prime Collaboration Deployment (PCD)	Application	11.5.2.10000-4

# コンポーネント一覧 (3)

カテゴリ	コンポーネント	バージョン
End Point	Cisco IP Phone 7811/21/41/61	11-5-1-18
	Cisco Unified IP Conference Phone 8831	10-3-1SR2-2
	Cisco IP Phone 8811/41/45/51/61/65	11-5-1-18
	Cisco Unified IP Phone 8941/8945	9-4-2SR2-2
	Cisco Unified IP Phone 9951/9971	9-4-2SR2-2
	EX60 - Cisco TelePresence System EX60	TC 7.3.6
	EX90 - Cisco TelePresence System EX90	TC 7.3.6
	SX20 - Cisco TelePresence SX20 Quick Set	CE 8.1.1
	SX80 - Cisco TelePresence SX80 Codec	CE 8.1.1
	SX10 - Cisco TelePresence SX10 Quick Set	CE 8.1.1
	C90 - Cisco TelePresence System Integrator Package C90	TC 7.3.6
	500-32 - Cisco TelePresence System 500 (32)	TX6.1.10(7)

# コンポーネント一覧 (4)

カテゴリ	コンポーネント		バージョン
End Point	TX9000 - Cisco TelePresence System TX9000		TX6.1.10(7)
	MX200-G2 - Cisco TelePresence MX200-G2		CE 8.1
	MX300-G2 - Cisco TelePresence MX300-G2		CE 8.1
	IX5000 - Cisco TelePresence IX5000		IX8.1.1(59)
	DX650 - Cisco DX650		10.2.5.207
	DX70 - Cisco DX70		10.2.5.207
	DX80 - Cisco DX80		10.2.5.207
Communications Infrastructure	ISR Gateways (3945e/3925e/3945/2921)	IOS	15.6.1 T
	ISR 4451-X	IOS	3.16.2S
	Cisco Unified Border Element for ISR		15.6.1 T
	Cisco 3650 PoE Switch		3.3.5SE
	Cisco 3750 PoE Switch		15.0.2-SE 5
	vCenter Server		ESXi 5.1.0 , 5.5.0
	MDS Switch	M9500	

# コンポーネント一覧 (5)

カテゴリ	コンポーネント		バージョン
TelePresence	Cisco TelePresence Management Suite - TMS	Version	15.2.1
	MCU 4510, 5310 and 5320 - Cisco TelePresence MCU	Version	4.5 (1.85)
		Locale	MCU_4-3_UI_and_audio_JPN.package
	Cisco TelePresence Server on VM	Version	4.3(1.13)
	Cisco TelePresence Server 7010	Version	4.3(1.13)
	Cisco TelePresence Content Server	Version	v7.1 Build 4262
		Locale	S5.0_language_packs.zip
Cisco TelePresence Conductor	Version	XC4.2	
Wireless and Mobility	Wireless Access Point 1142	Version	15.3

# コンポーネント一覧 (6)

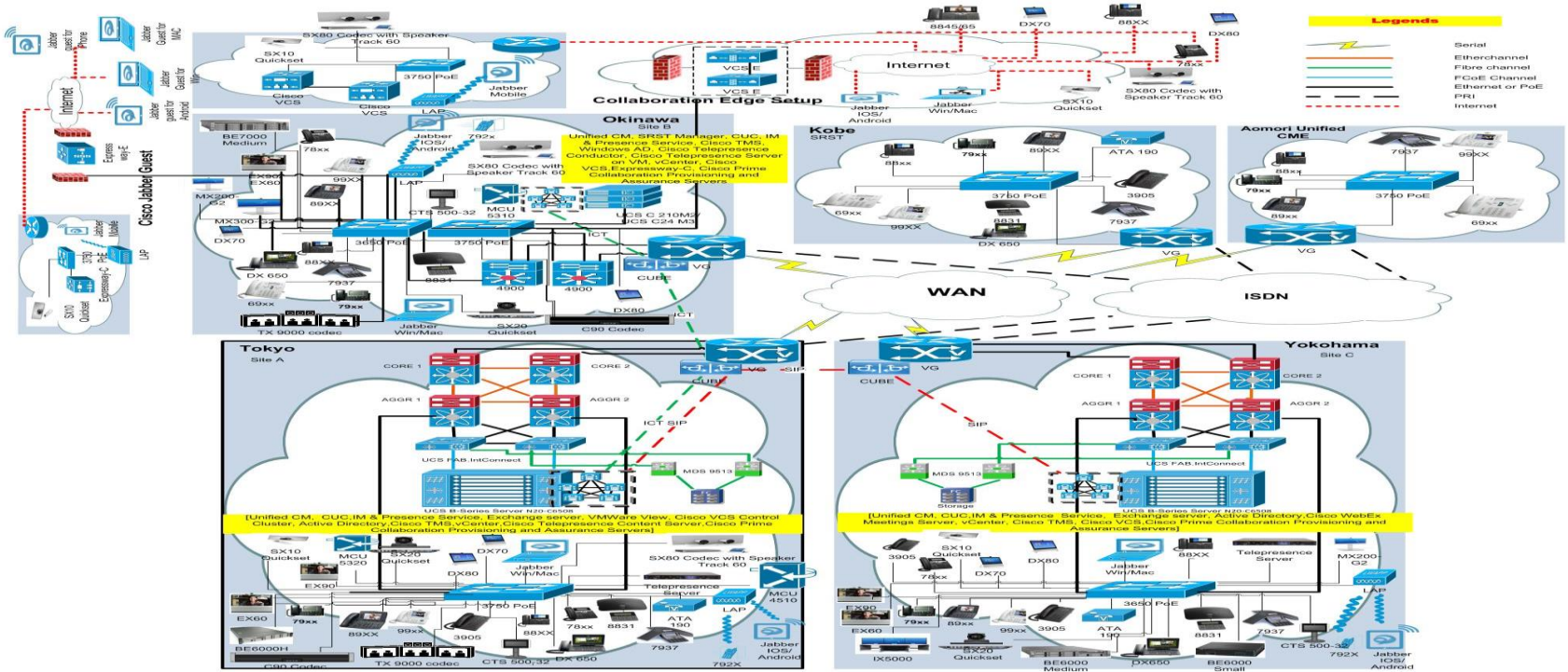
カテゴリ	コンポーネント		バージョン
Messaging Applications	Cisco Jabber for Mac	Version	11.6.0.235520
	Cisco Jabber for Windows	Version	11.6.2.40282
	Cisco Jabber for iPhone and iPad	Version	11.6.1.236312 - 32 bit (iPhone5 and iPad)
			11.6.1.236312 - 64 bit (iPhone6 and iPhone6S)
		iPhone 5/6/6S	Apple iOS 9.3.2(13F69)
		iPad	Apple iOS 9.3.2(13F69)
		iPad Pro/Air	Apple iOS 9.3.2(13F69)
		Apple Watch	Apple iOS 2.2.1(13V420)
	Cisco Jabber for Android	Version	11.6.1.238134
		Galaxy S4	Android OS 5.0.1
		Galaxy S6	Android OS 6.0.1
		Xperia Z1/Z3/Z3+	Android OS 5.0.2
		Nexus 5X	Android OS 6.0.1
Sony Tab		Android OS 5.1.1	
Sony Watch		Android OS 5.1.1	

# コンポーネント一覧 (7)

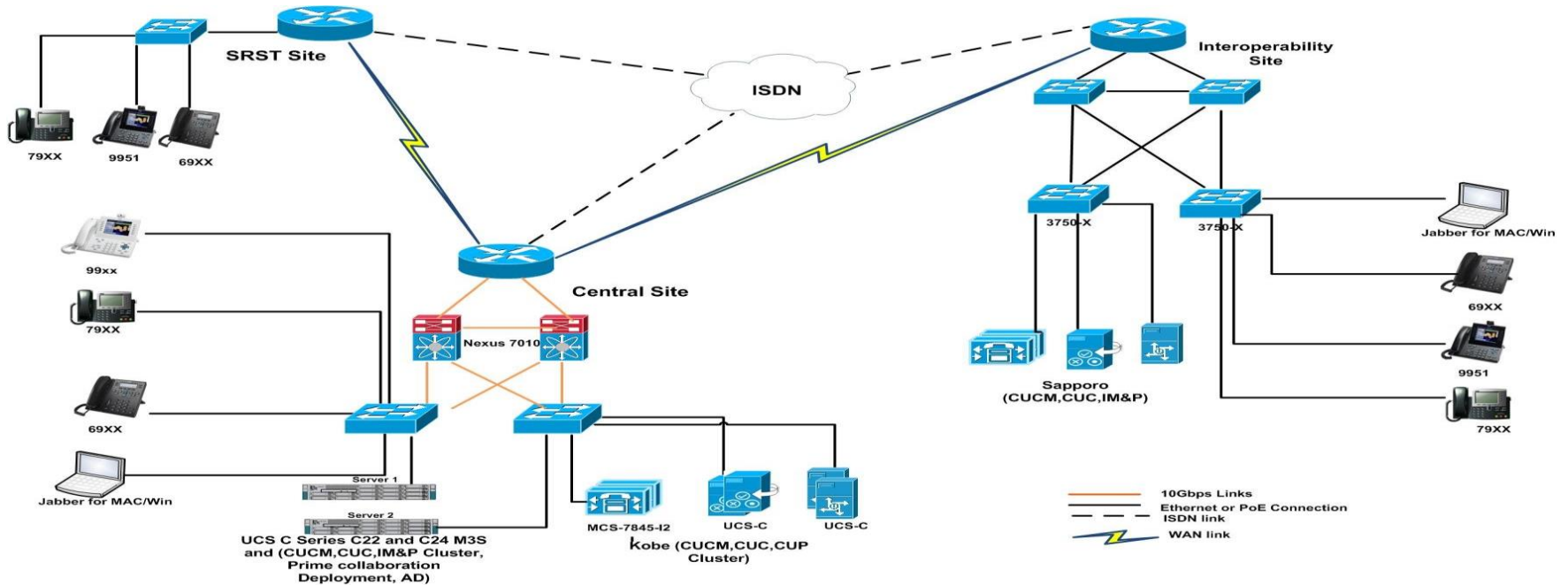
カテゴリ	コンポーネント		バージョン
UCS	Fabric Interconnect PRIMARY	Cisco UCS 6140	2.2(3d)
	Fabric Interconnect SUBORDINATE	Cisco UCS 6140	2.2(3d)
	Fabric Cluster	Cisco UCS 6140	2.2(3d)
	ESXi Host	B-Series Server	ESXi 5.1.0, 5.5.0
		C-Series Server	ESXi 5.1.0, 5.5.0, 6.0
Client	Operating System	Windows 7-SP1	Windows 7-SP1 (Japanese)
		Windows 8/8.1	Windows 8/8.1 (Japanese)
		Windows 10	Windows 10 (Japanese)
		Mac	10.10.5 (Japanese)
	Browser	IE	IE 10, 11 (Supported Japanese language)
		Mozilla	Firefox 44.0, 45.0, Firefox ESR 31, 38 (Supported Japanese language)
		Chrome	Chrome 43 or later (Supported Japanese language)
		Safari	8.0.8, 9.0
Server	Microsoft Windows Server		Windows Server 2008 (R2 Enterprise – Japanese) Windows Server 2012 (R2 Enterprise – Japanese)
	Microsoft Exchange Server		2013 SP1



# テストポロジ - FCS Validation



# テストポロジ - Upgrade Testing



# テスト結果

対象コンポーネント	テスト項目数	合格数	不合格数	不具合数
<b>UC 11.5 FCS Validation:</b>				
Cisco IP Phones	300	300	0	0
Cisco Jabber for Windows	22	22	0	0
Cisco Jabber for Mac	19	19	0	0
Cisco Jabber for Android	25	25	0	0
Cisco Jabber for iPhone and iPad	33	33	0	0
Cisco Telepresence Video Communication Server	111	107	4	4
Cisco Telepresence Server 7010	18	18	0	0
Cisco Telepresence Conductor	10	10	0	0
Cisco Telepresence MCU	10	10	0	0
Cisco Telepresence Management Suite	10	10	0	0

# テスト結果

対象コンポーネント	テスト項目数	合格数	不合格数	不具合数
<b>Cisco Prime Collaboration:</b>				
Cisco Prime Collaboration Provisioning	122	122	0	0
Cisco Prime Collaboration Assurance	24	24	0	0
Cisco Prime Collaboration Analytics	16	16	0	0
<b>UC 11.5 Upgrade Testing:</b>				
Upgrade 8.6.2 to 11.5.1	69	68	1	1
Upgrade 9.1.2 to 11.5.1	69	69	0	0
Upgrade 10.5.2 to 11.5.1	69	69	0	0
Upgrade 11.0.1 to 11.5.1	69	69	0	0
<b>Total</b>	<b>996</b>	<b>991</b>	<b>5</b>	<b>5</b>

# 不具合一覧

Sl. No.	不具合ID	ステータス
<b>UC 11.5 FCS Validation – Open Caveats:</b>		
<b>Cisco DX650</b>		
1	CSCva54039	New
2	CSCva05509	New
<b>Cisco TelePresence SX80 Codec</b>		
3	CSCva12449	Assigned
<b>Cisco TelePresence System EX90</b>		
4	CSCva31431	New
<b>UC 11.5 Upgrade Testing – Resolved Caveats:</b>		
<b>Cisco Prime Collaboration Deployment</b>		
5	CSCuz50032	Resolved



# UC 11.5 FCS Validation



Cisco DX650

# 1. CSCva54039: Japanese Conference Name not displayed in DX650 in a call from MCU 5320 (New/Sev3/Regional)

## Issue-Description:

- While an outbound call is made from MCU 5320 with Japanese Conference Name to Cisco DX650, the conference name is not displayed instead alias is displayed. With English Conference Name in MCU and making an outbound call the English Conference Name is displayed in DX650

## Environment:

- DX650 : 10.2.5.207
- Unified CM : 11.5.1.10000-6
- MCU 5320 : 4.5(1.85)

## Steps to Reproduce:

- Integrate MCU 5320 with Unified CM
- Register DX650 in Unified CM
- Create a Conference with Japanese Conference Name in MCU 5320
- Click Add participant from the conference and dial to DX650
- Japanese Conference Name is not displayed in DX650

## Actual Behavior:

- Japanese Conference Name is not displayed in DX650 when an outbound call is made from MCU 5320

## Expected Behavior:

- Japanese Conference Name should be displayed in DX650 when outbound call is made from MCU 5320





## 2. CSCva05509: Camera shutter close icon is displayed ,when we open the Camera Shutter (New/Sev3/Global)

### Issue-Description:

- Camera Shutter Close icon is displayed in DX650 , When we open the Camera Shutter

### Environment:

- MX200 & SX10 Quick Set : CE 8.1.1
- DX650 : 10.2.5.194
- Unified CM : 11.5.1.10000-6

### Steps to Reproduce:

- DX650, MX200 and SX10 registered with Unified CM
- Make a call from DX650 to SX10
- Close the Camera Shutter in DX650 (Not by the Hard Key)
- Make a call from MX200 to DX650.
- Select Answer option in DX650
- Now the call is between DX650 and MX200 (SX10 is on hold )
- Open the Camera Shutter in DX650 (Not by Hard Key) during the call with MX200
- Now end the call in MX200
- Resume the call between DX650 and SX10 in DX650
- Check whether the camera shutter close icon is not displayed in DX650 after the call is been resumed

### Actual Behavior:

- Camera shutter close icon is displayed in DX650 after the call is been resumed

### Expected Behavior:

- Camera shutter close icon should not be displayed in DX650 after the call is been resumed

Global





# Cisco TelePresence SX80 Codec

### 3. CSCva12449: Far end information is not seen in SX80 Codec Touch UI (New/Sev3/Global)

#### Issue-Description:

- Far End Presentation information is not seen in SX80 Codec Touch UI , When the Presentation is shared from SX10 Quick Set to SX80 Codec during an inter cluster call

#### Environment:

- SX10 Quick Set & SX80 Codec : CE 8.1.1
- Unified CM : 11.5.1.10000-6

#### Steps to Reproduce:

- Register SX10 Quick Set in Unified CM (A)
- Register SX80 Codec in Unified CM (B)
- Make a call from SX10 Quick Set to SX80 Codec
- Share presentation from SX10 Quick Set to SX80 Codec
- Check Presentation Information in SX80 Codec Touch UI

#### Actual Behavior:

- Far end Presentation Information is not seen in SX80 Codec Touch UI

#### Expected Behavior:

- Far End Presentation Information should be seen in SX80 Codec Touch UI

Global





# Cisco TelePresence System EX90

## 4. CSCva31431: Call is not resumed in EX90 while in shared Line (New/Sev3/Global)

### Issue-Description:

- Call is not resumed in EX90 while in shared Line with DX650

### Environment:

- DX650 : sipdx650.10-2-5-207
- Unified CM : 11.5.1.10000-6
- EX90 : TC7.3.6
- SX10 Quick Set : CE 8.1

### Steps to Reproduce:

- Register EX90 ,DX650(A),DX650(B) and SX10 Quick Set in Unified CM
- EX90 and DX650(A) are in Share Line
- Make a call from SX10 Quick set to DX650(B)
- Attend the call in DX650(B)
- Select call park in DX650(B)
- Enter the call Park number in DX650(A)
- Now the call is between DX650(A) and SX10 Quick Set
- Place the call on hold in DX650(A)
- Resume the call in EX90

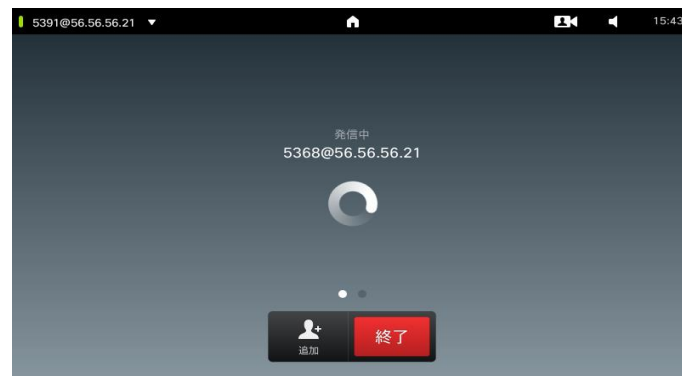
### Actual Behavior:

- The call is not resumed in EX90 , when the call is placed on hold in DX650(A) and call gets ended

### Expected Behavior:

- The call should be resumed in EX90 , when the call is placed on hold in DX650(A)

Global





# UC 11.5 Upgrade Testing



# Cisco Prime Collaboration Deployment

# 5. CSCuz50032: CUP discovering takes long time under discover cluster tab in PCD (Resolved/Sev4/Global)

## Issue-Description:

- It takes almost 6 hours to discover CUP. Whereas CUCM takes few minutes for the same.  
Note: CUCM Discovered and upgraded successfully.

Global

## Environment:

- PCD Version : 11.5.2.10000-4
- CUCM Version : 8.6.2.10000-30
- CUP Version : 8.6.3.10000-20

## Steps to Reproduce:

- Login to the PCD using the credentials
- Discover the cluster as Inventory -> Clusters -> Discover cluster
- Enter the Name for the cluster and give the IP Address of CUCM

## Actual Behaviour:

- Cluster discovered with errors

## Expected Behaviour:

- Cluster should be discovered successfully without any errors

The screenshot shows the Cisco Prime Collaboration Deployment interface. At the top, there's a navigation bar with the Cisco logo and 'Cisco Prime Collaboration Deployment' text. Below that, there's a 'Clusters' section with a search bar and a 'Show All' dropdown. The main content area displays a table of clusters. The 'CUCM' cluster is expanded, showing a list of 'Cluster Nodes'. The nodes table has columns for Node Name, IP Address, Type App..., Active Vers..., Functions, SFTP Server, Notes, Discovery Status, and Actions. The nodes listed are cucmpub (30.30.30.21), cucmsub (30.30.30.22), cuppub (30.30.30.25), and cupsb (30.30.30.26). The discovery status for cuppub is 'Successful', while for cupsb it is 'Login Failed'.

Cluster Name	Product and Version	Nodes	Cluster Type	Discovery Status	Actions
CUCM	CUCM - 8.6.2.10000-30 IM&P - 8.6.3.10000-20 Unknown - null	4	Discovered	Issues Encountered	Edit...   Delete...

Node Name	IP Address	Type App...	Active Vers...	Functions	SFTP Server	Notes	Discovery Status	Actions
cucmpub	30.30.30.21	CUCM	8.6.2.10000-30		localhost		Successful	Edit...   Refresh Node...
cucmsub	30.30.30.22	CUCM	8.6.2.10000-30		localhost		Successful	Edit...   Refresh Node...
cuppub	30.30.30.25	IM&P	8.6.3.10000-20		localhost		Successful	Edit...   Refresh Node...
cupsb	30.30.30.26				localhost		Login Failed	Edit...   Refresh Node...





**CISCO**

*TOMORROW starts here.*