

Your Time Is Now

Meraki – Cloud managed IT

Martina Herceg Jungić  
*SEM*

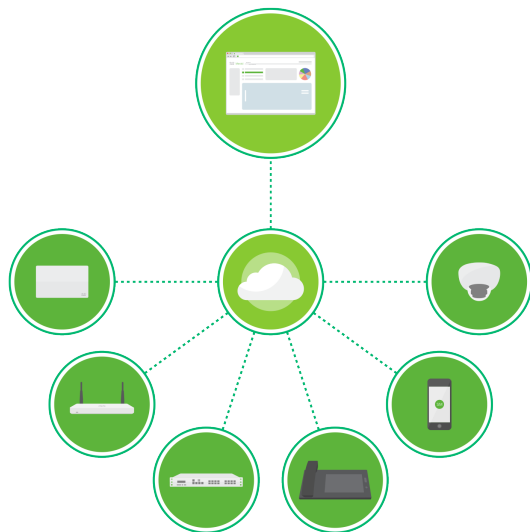
Cisco  
Connect .

5 - 7 April, 2017  
Pula, Croatia



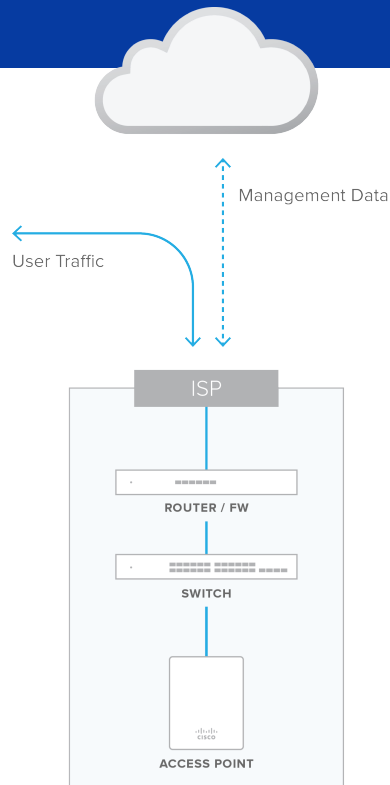
- Introduction
- Product demo
- Portfolio
- Q&A

# Simplifying across IT with cloud management



- **A complete cloud managed networking solution**
- Wireless, switching, security, communications, EMM, and security cameras
- Integrated hardware, software, and cloud services
- **Leader in cloud-managed networking**
- Among Cisco's fastest growing portfolios
- Over 140,000 unique customers
- Over 2 million Meraki network devices online

# Out of band cloud management



## Intuitive

- Simple browser-based dashboard
- Cloud hosted centralized management platform

## Scalable

- Unlimited throughput, no bottlenecks
- Add devices or sites in minutes

## Reliable

- Highly available cloud with multiple datacenters
- Network functions even if connection to cloud is interrupted
- 99.99% uptime SLA

## Secure

- No user traffic passes through cloud
- Fully HIPAA / PCI compliant (level 1 certified)
- 3rd party security audits, daily penetration testing
- Automatic firmware and security updates (user-scheduled)

[information at meraki.cisco.com/trust](https://information.meraki.cisco.com/trust)

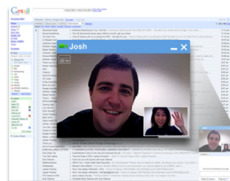


# An integrated solution for new IT challenges

Cisco  
Connect



Billions of  
mobile devices



HD video and rich  
media



Integrated  
mobility  
management



Layer 7  
application  
shaping



*A complete solution out-of-the-box:  
No extra hardware, software, or complexity*

# Rapid feature velocity

Cisco  
Connect

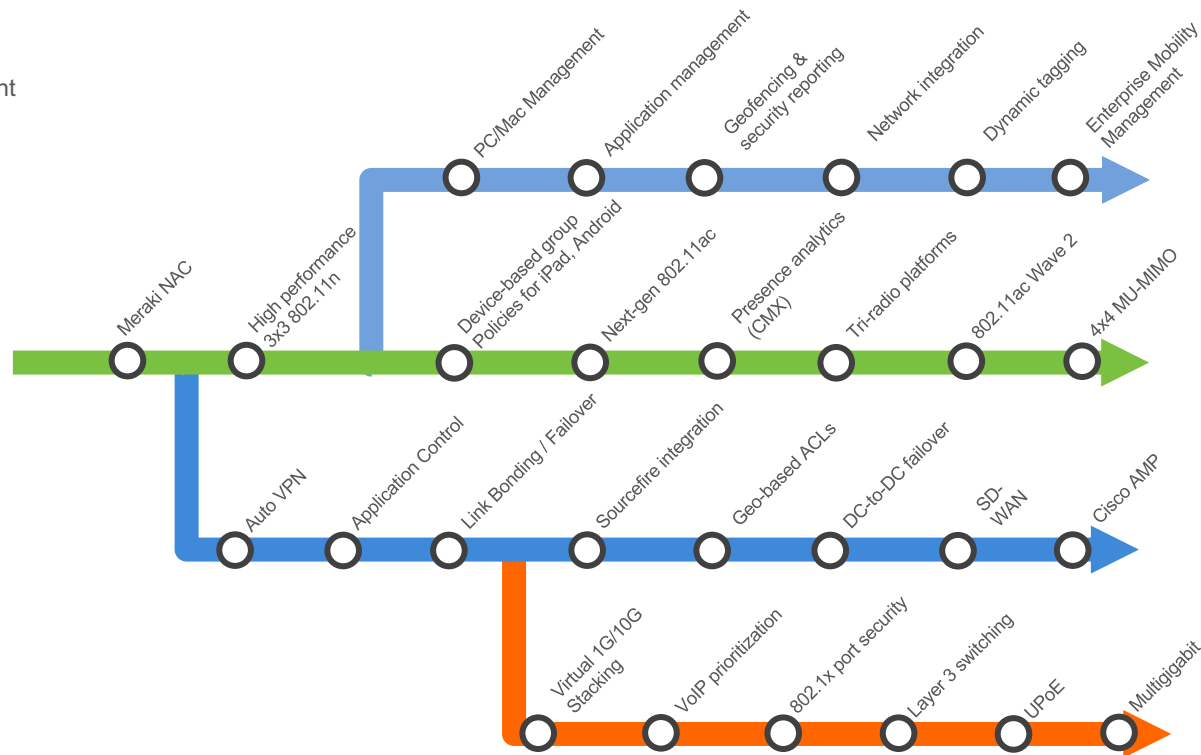
**SM**  
Systems Manager  
Mobility Management



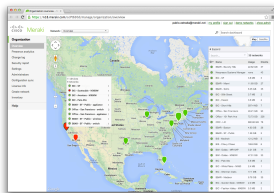
Meraki MR



Meraki MX

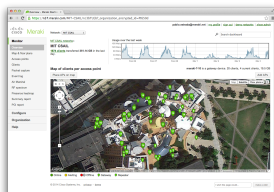


# DEMO



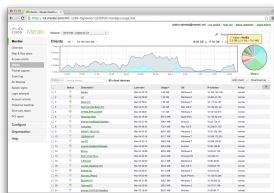
“Before, if we needed to check a port, we had to go on site. Now I can do anything from the dashboard.”

Yezid Acosta, North America IT Manager, Nespresso



“Meraki has the feature set, and they have a system that’s really intuitive and easy to manage. It’s a great experience for users and IT administrators.”

Jack Costanza, Assistant Director, MIT CSAIL



“Our customers depend on WiFi. With high speed 802.11n, our customers can count on performance.”

Jim Amorosa, CEO, Motel 6 and Studio 6

# The Meraki Full Stack

Cisco  
Connect



MR  
Access Points



MX  
Security Appliances



MS  
Ethernet Switches



Systems Manager  
EMM



MC  
Communications



MV  
Security Cameras

- A complete cloud managed IT portfolio
- Single pane of glass management

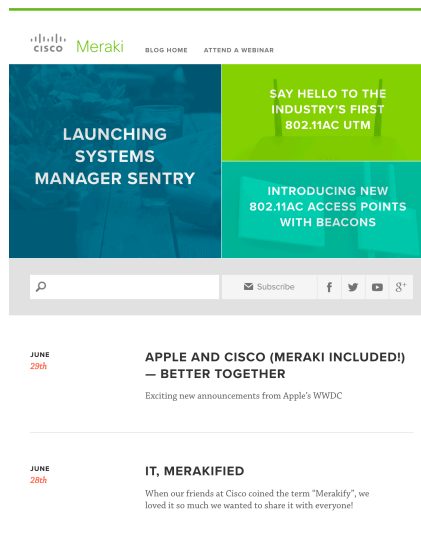
# Next steps

Cisco  
Connect

[meraki.cisco.com/eval](https://meraki.cisco.com/eval)

[meraki.cisco.com/blog](https://meraki.cisco.com/blog)

Contact your local Cisco representative  
or Cisco partner 😊





**CISCO**