



Cisco Meraki Overview

Cisco Meraki: 100% cloud-managed IT

- Cisco Meraki: a complete cloud-managed IT solution
 - Wireless, switching, security, mobility management, and communications, all centrally managed over the web
 - Built from the ground up for cloud management
 - Integrated hardware, software, and cloud services
- Leader in cloud-managed networking
 - Tens of thousands of customers across all industries, over 100% annual growth
 - Operating in the cloud since 2006
- Recognized for innovation
 - Gartner Magic Quadrant, InfoWorld Technology of the Year, CRN Coolest Technologies

Trusted by thousands of customers worldwide:



Why cloud managed IT?

An integrated solution for new IT challenges



Billions of mobile devices



HD video and rich media



New business opportunities



Integrated mobility management



Layer 7 application shaping



Analytics and user engagement

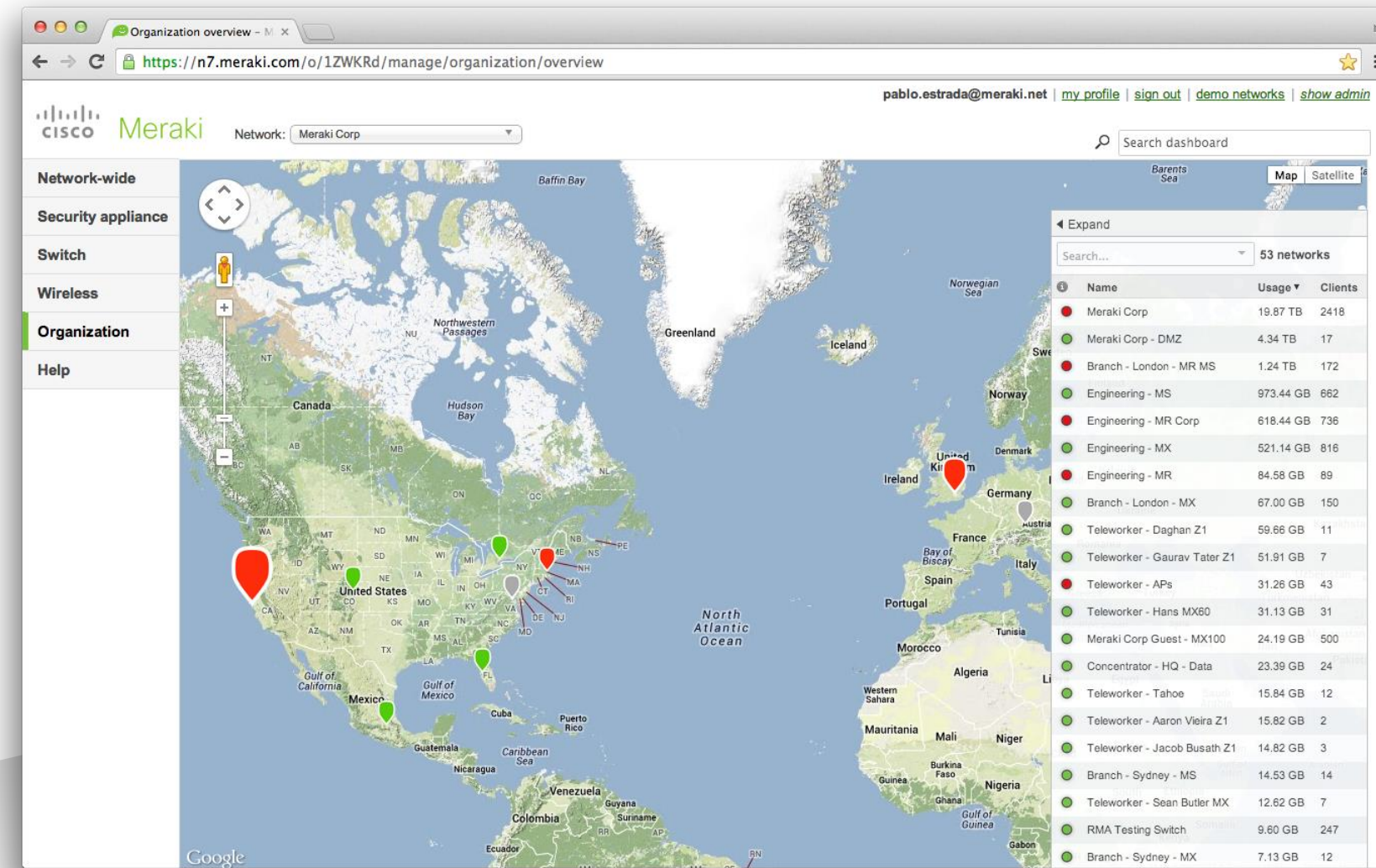
*A complete solution out-of-the-box:
No extra hardware, software, or complexity*

The cloud increases IT efficiency



- Turnkey installation and management
- Integrated, always up-to-date features
- Scales from small branches to large networks
- Reduces operational costs

Bringing the cloud to enterprise IT



MR
Wireless LAN



MX
Security Appliances



MS
Ethernet Switches



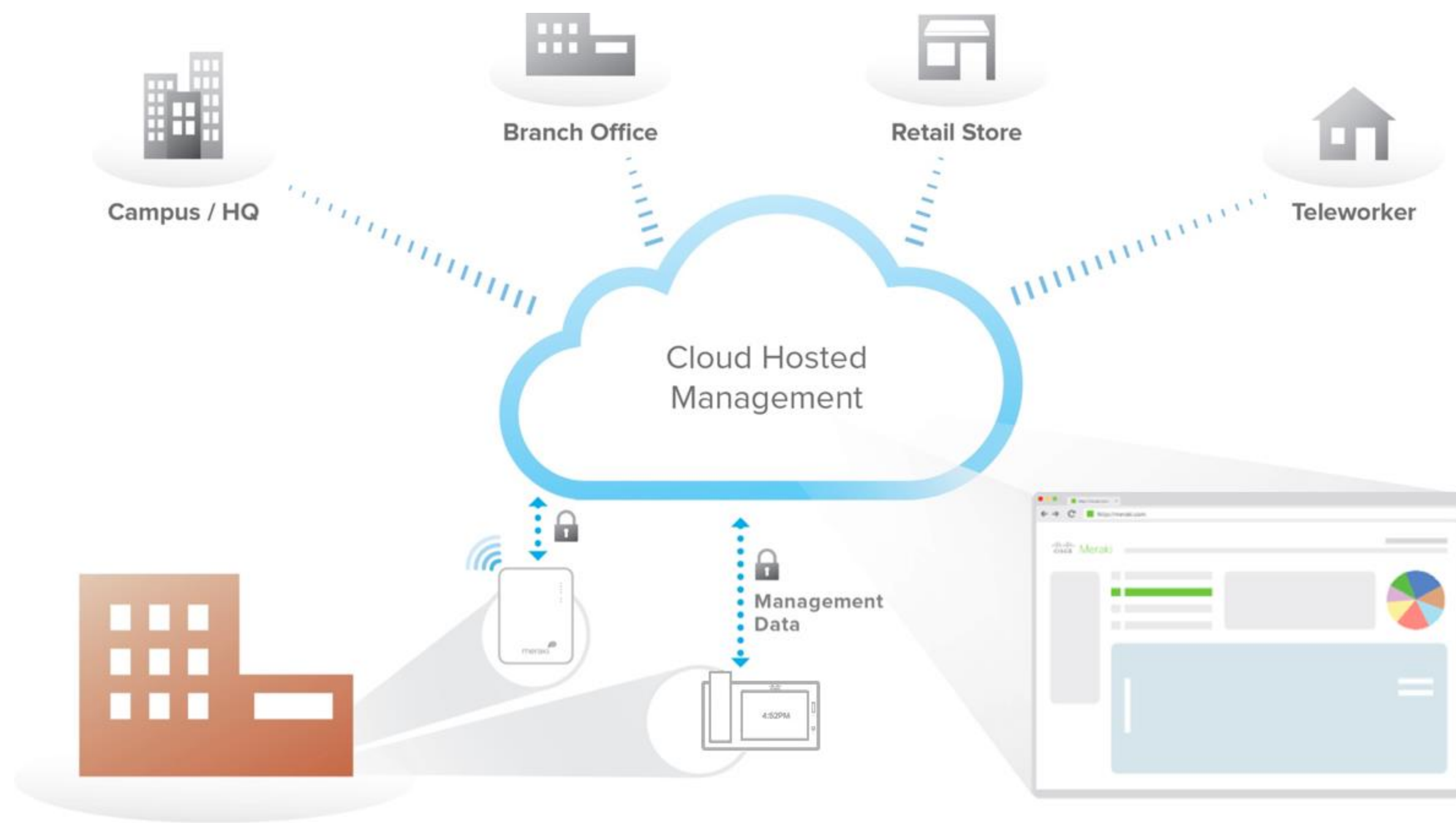
MC
Communications



Systems Manager
Mobility Management

Cloud Architecture

Secure, scalable architecture



Secure out-of-band management

No user traffic flows through the cloud

Reliable

Network stays up if connection to the cloud is lost

Scalable

Supporting customers with thousands of sites, millions of clients

Future-proof

New features delivered seamlessly from the cloud

Intuitive web-based dashboard

Single pane of glass management

Client fingerprints

Real-time control

The screenshot shows the Meraki dashboard interface. At the top, there's a navigation bar with the user's name 'Rachel' and links for 'my profile', 'sign out', 'demo networks', and 'show admin'. Below this is a search bar labeled 'Search dashboard'. The main content area is divided into several sections: a left sidebar with navigation options like 'Network-wide', 'Security appliance', 'Switch', 'Wireless', 'Phone', 'Organization', and 'Help'; a central client details panel for 'Rachels-iPhone-4' showing status, SSID, access point, and device type; a usage graph for the last week; and a policy/network configuration section at the bottom. A map on the right shows the client's location on a floor plan.

Site wide search

Client location

Traffic analytics

SaaS feature delivery, quarterly updates

Search: [Advanced search »](#) [Help](#)

951 client devices Select: **All**, None [Columns...](#) | [Download as XML](#)

Status	Description	Manufacturer	Open
<input type="checkbox"/>	1 Gregg	Intel	Win
<input type="checkbox"/>	2 Jenny-PC	Intel	Win
<input type="checkbox"/>	3 GOD	AzureWave	Other
<input type="checkbox"/>	4 MacBookPro-001F5BE7BF38	Apple	Mac
<input type="checkbox"/>	5 Angelo	Askey	Win
<input type="checkbox"/>	6 kstephens Mac	Apple	Mac
<input type="checkbox"/>	7 ...	Apple	Mac

User/device fingerprinting

LDAP membership: Students, Teachers

Blocked web content: Adult x, Gambling x

Filter content in ...

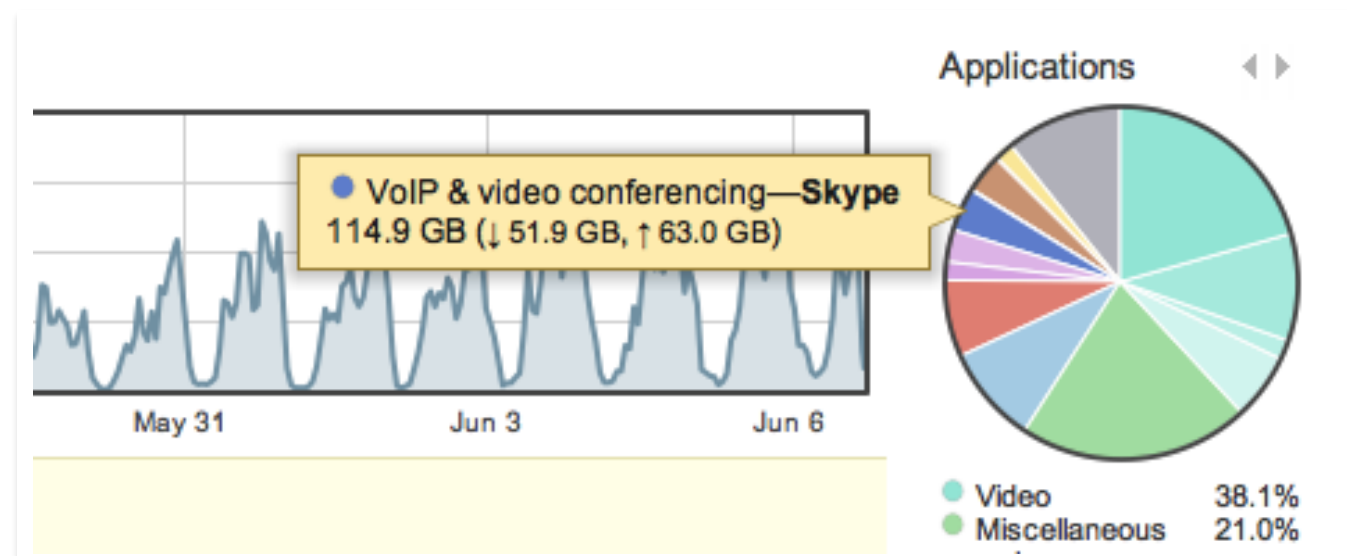
Content filtering

Client details: Refresh details

Name: London Reception
Model: iPad Mini 3 (WiFi)
Serial: DLXNN6BFG5V2
Warranty: Apple
Tags: IT-Filevault, LondonReceptionIPad
Auto tags: iOS devices, Business Hours, InSchoolHours
Address: 7 - 8, 10 Finsbury Square, London EC2A 1AF, United Kingdom
Charge: Set an owner 100%
OS Version: iOS 9.2.1

Approximate location: Refresh location
7 - 8, 10 Finsbury Square, London EC2A 1AF, United Kingdom (User-defined)

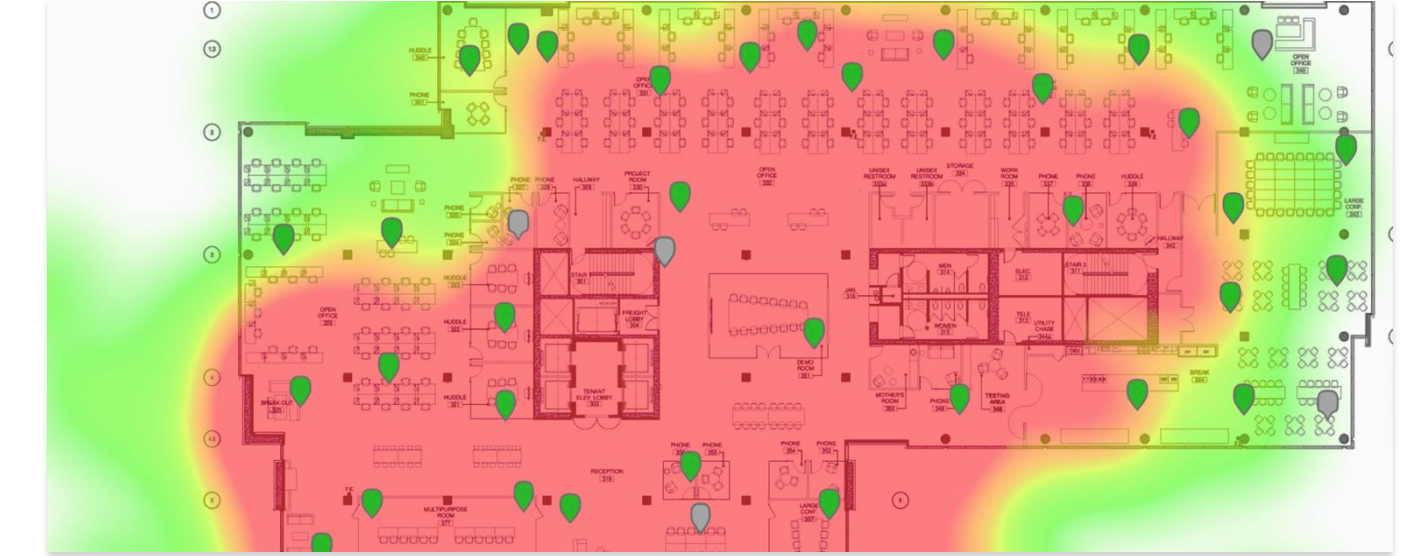
Mobile application deployment



Application firewall

Date	Scan result	AV	Running	Client IP
May 15 17:34	Passed	Norton Internet Security	Yes	10.254.92.19
May 30 18:24	Passed	Norton Internet Security	Yes	10.254.92.19
May 27 09:07	Passed	McAfee VirusScan	Yes	10.74.112.40
May 27 09:07	Passed	McAfee VirusScan	Yes	10.74.112.40
May 27 09:07	Passed	McAfee VirusScan	Yes	10.74.112.40
May 16 09:03	Passed	McAfee VirusScan	Yes	10.247.49.95
May 16 09:03	Passed	McAfee VirusScan	Yes	10.247.49.95
May 12 10:58	Passed	Microsoft Security Essentials - 2.1.6805.0	Yes	10.123.104.174

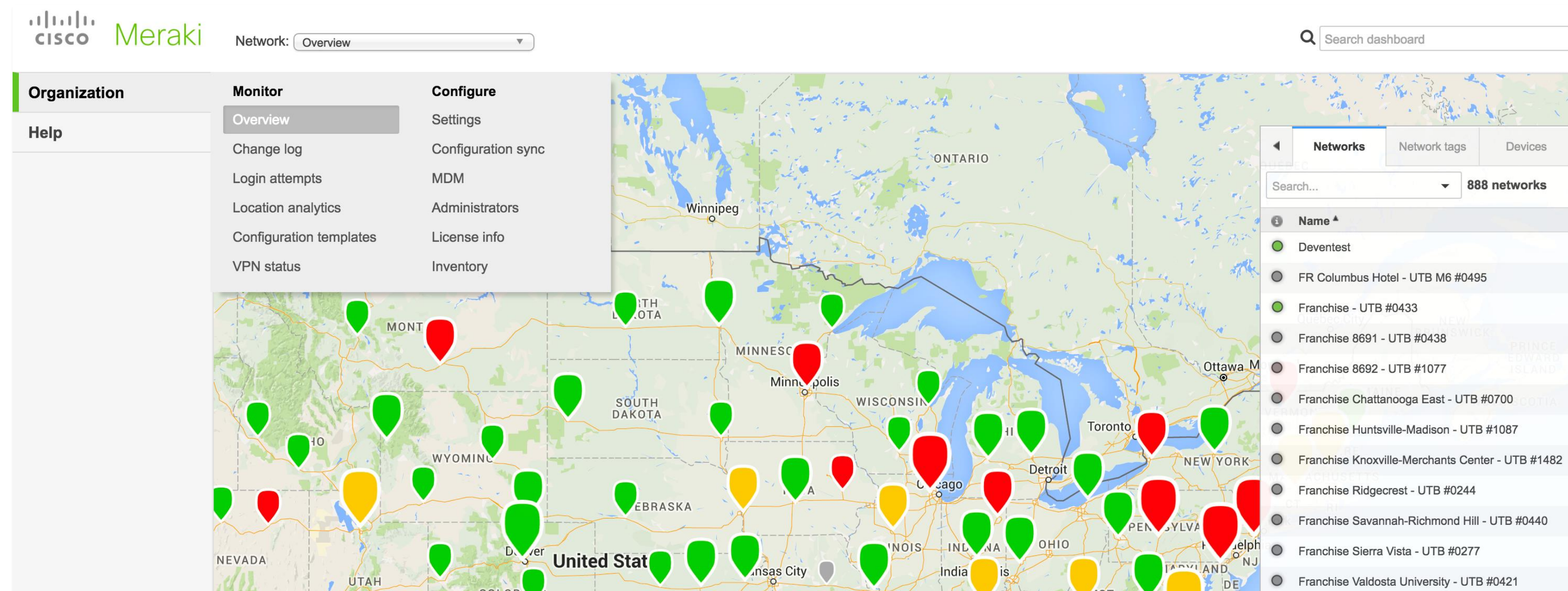
Network access control



Location Analytics

Solution Highlights

Distributed networks



Centralized cloud management scales to thousands of sites

Multi-site visibility and control

Map-based dashboard; configuration sync; remote diagnostics; automatic monitoring and alerts

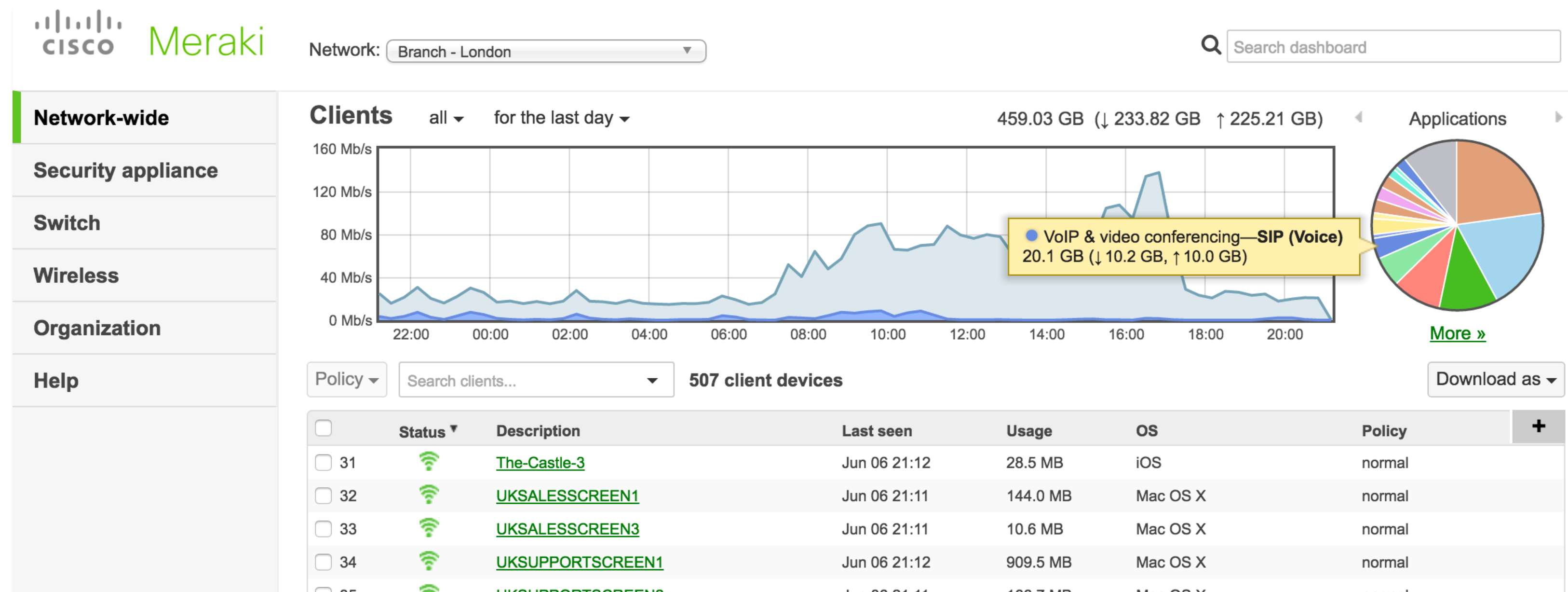
Zero-touch provisioning

Devices easily provisioned from the cloud, no staging required

Traffic acceleration

Web caching reduces bandwidth usage; application-aware QoS and SD-WAN capabilities prioritize business critical apps

High capacity edge networks



RF optimization and application-aware QoS for high-throughput, high density WLAN

Layer 7 application and traffic shaping

Throttle, block, or prioritize application traffic with DPI-based fingerprinting; set user and group-based traffic shaping rules

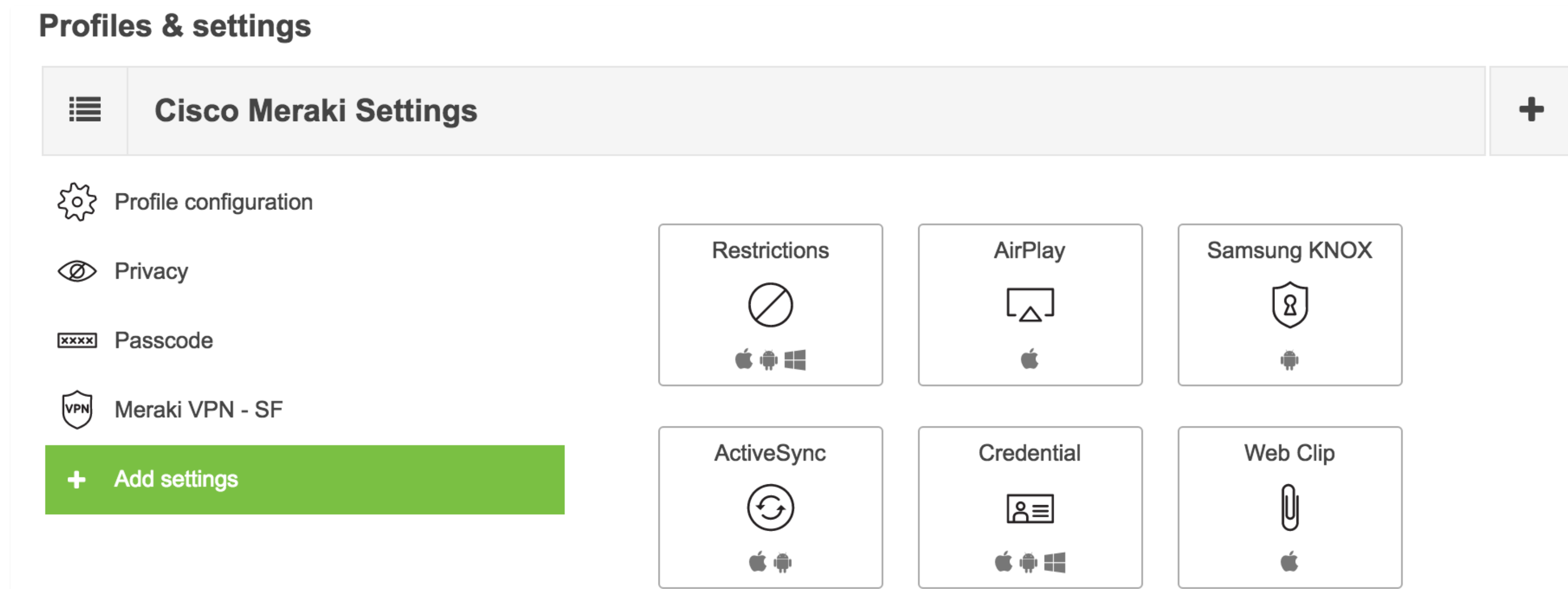
Cloud-based RF optimization

Dynamically avoid interference, optimizing channel selection and power levels

Density-optimized WLAN

RF platform tuned for airtime fairness and performance in dense performance-critical environments

Mobility management



Security, management, and capacity for BYOD-ready deployments right out of the box

Device-aware security

Device-aware firewall and access control; antivirus scan; LAN isolation; Bonjour Gateway; content and security filtering

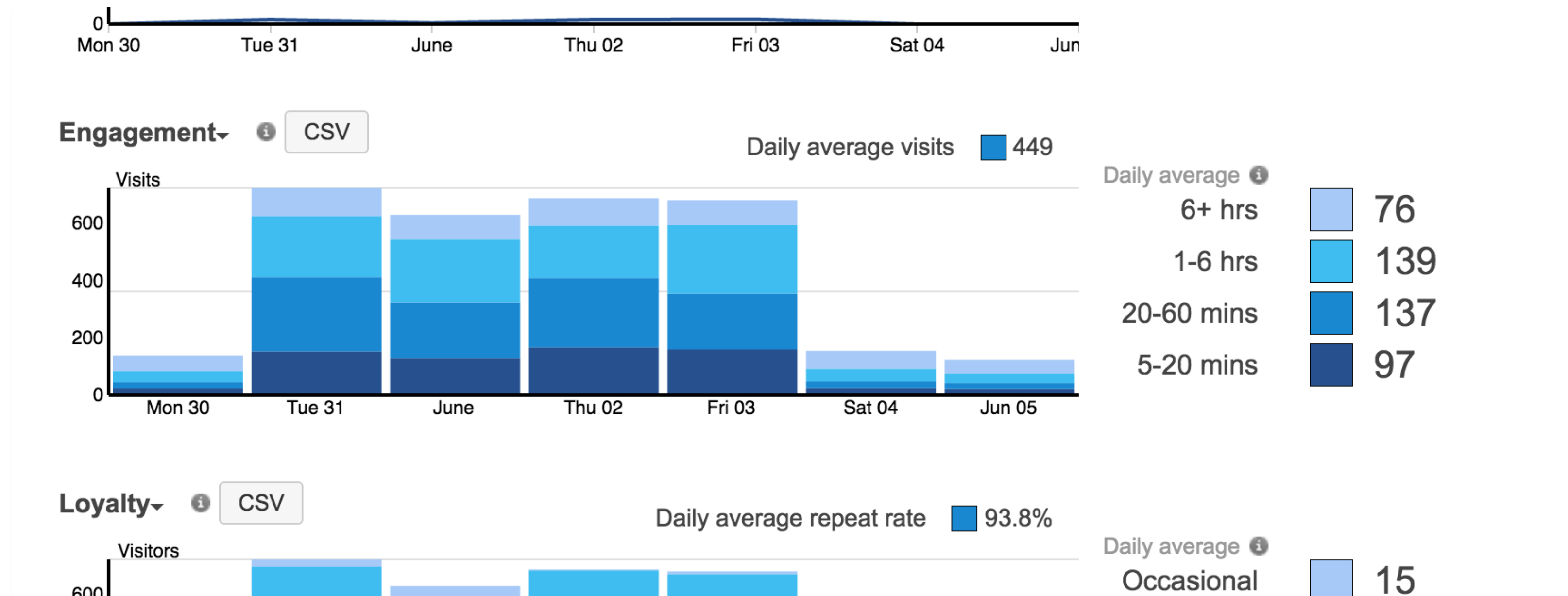
Integrated EMM

Enforce encryption, passcodes, and device restrictions; deploy enterprise applications; remotely lock or wipe devices

Simplified onboarding

Flexible authentication with Active Directory integration, SMS authentication, hosted splash pages, and automatic EMM enrollment

User analytics and engagement



Built-in location analytics dashboard

Optimize marketing and business operations

Analyze capture rate, dwell time, and new/repeat visitors to measure the impact of advertising, promotions, site utilization, etc.

Built-in location analytics

Integrated in the WLAN; no extra sensors, appliances, or software

Extensible API

Integrate location data with CRM, loyalty programs, and custom applications for targeted real-time offers

Flexible authentication and access control

Splash page

- None (direct access)
Users can access the network as soon as they associate
- Click-through
Users must view and acknowledge your splash page before being allowed on the network
- Sign-on with
Require users to check in to your Facebook Page before gaining access to your network. ⓘ
Save this page first, in order to associate your ssid with your Facebook Page.
- Sign-on with SMS Authentication
Users enter a mobile phone number and receive an authorization code via SMS.
You have used 3 of your 25 free texts. Connect your Twilio account on the [Network-wide settings](#) page.
- Billing (paid access)
Users choose from various pay-for-access options, or an optional free tier
- Systems Manager Sentry enrollment ⓘ
Only devices with Systems Manager can access this network

Flexible built-in authentication mechanism

Flexible authentication Secure 802.1x and Active Directory authentication; Facebook Authentication for branding and targeted social marketing; SMS self-service authentication; and hosted sign-on splash pages

Dynamic access control Assign clients layer 3 / 7 firewall rules, VLANs, and application-aware quality of service by identity, group, location, or device type

Simplified enterprise security

Air Marshal

Scanning APs **104 APs** with separate scanning radios


LAN containment **Don't contain APs seen on the LAN**

Keyword containment

Off-channel scans **Opportunistic and mandatory scans**

Mandatory scan schedule **7:00 AM** S M T W T F S

[Save Changes](#) or [cancel](#).



In the last week **12 rogue SSIDs** | [109 other SSIDs](#) | [0 spoofs](#) | [0 malicious broadcasts](#) | [11370 packet floods](#)

Containment	SSID	Last seen	First seen	# APs	Rogue because	Manufacturer	Channel	Broadcast MACs	Wired MAC	
uncontained	testbed_devs	Jun 6 14:00	Apr 13 17:17	2	Seen on LAN	Meraki	11, 161	88:15:44:50:0a:42 1 more	88:15:44:50:0a:d0	
uncontained	W072	Jun 6 14:00	May 20 11:29	1	Seen on LAN	Meraki	161	8e:15:54:50:0a:42	88:15:44:50:0a:d0	
uncontained	BFT-Manual-MR42-WiFi	Jun 6 14:00	Apr 13 17:21	1	Seen on LAN	Meraki	100	8a:15:54:a8:0c:6a	88:15:44:a8:0c:44 1 more	

Enterprise-class security features for security-conscious environments

Air Marshal WIDS/WIPS

Detect wireless attacks; contain rogue APs; cloud-based alerting and diagnostics

User and device aware security

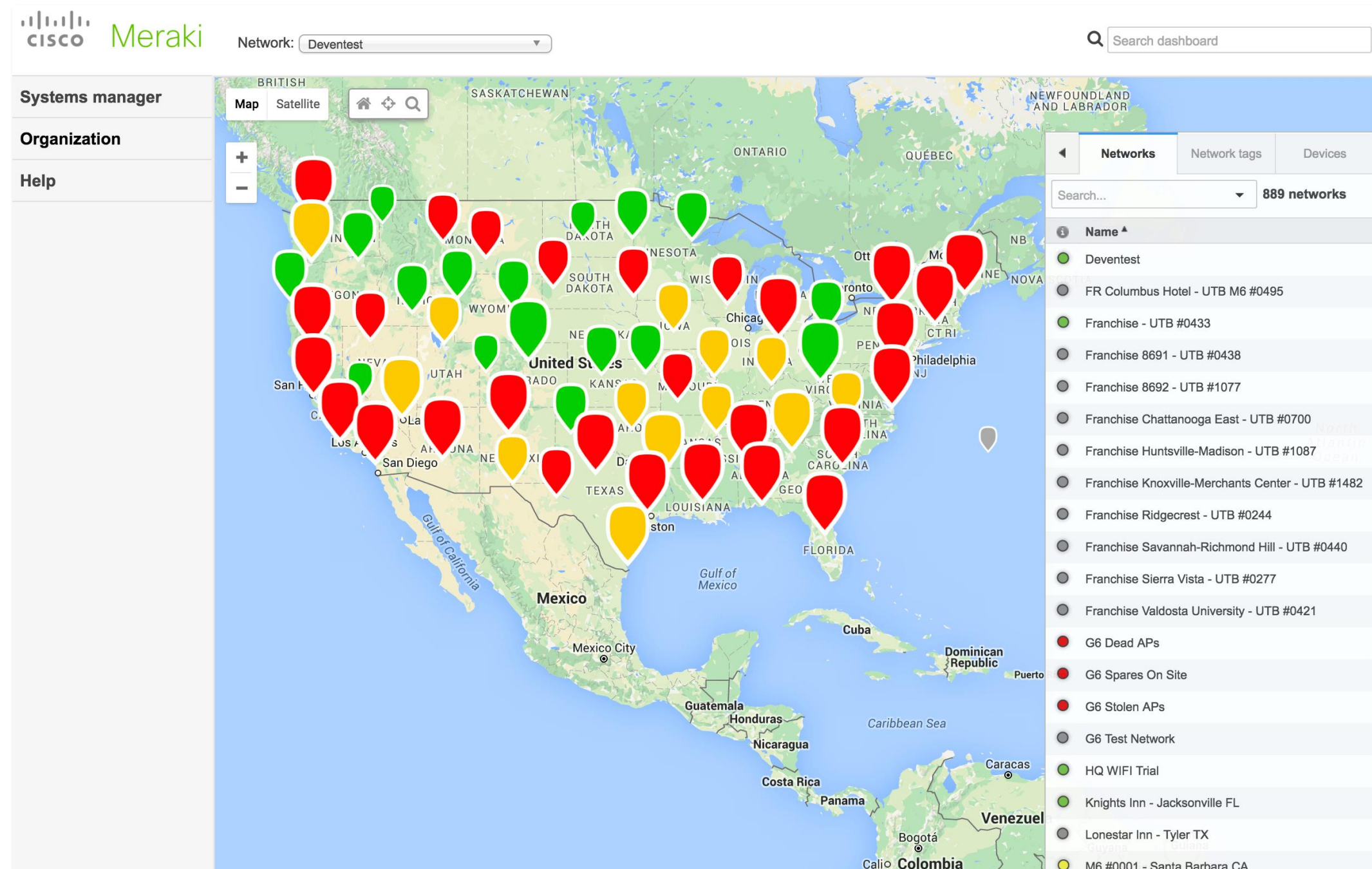
User, device, and group-based firewall rules (layer 3 / 7) with Active Directory integration

UTM and content security

Application firewall; content filtering matching 1B+ URLs; antivirus/anti-malware filtering; Google safe-search

Case Studies

Case study: E la Carte



E la Carte tablets deployed at over 1,700 restaurants with an MX or Z1 appliance and APs

PCI compliant solution enables mobile POS

Restaurants centrally managed over the web

Deployed without pre-staging or on-site IT

Remote trouble shooting possible on thousands of managed networks

“We wanted to make sure that whatever vendor we chose would be someone who would be there in the long run and have a great tool to use; ultimately, we went with Meraki.”

Dan Smith, Director of Operations & Information Security, E la Carte

Case study: Lee's Summit R-7 School District



The screenshot shows the Cisco Meraki dashboard interface. On the left, there's a navigation menu with 'Organization' and 'Help'. The main area features a map with numerous green location pins representing school sites. A sidebar on the right displays a list of network devices under the heading '1457 devices'. The list includes columns for 'Model' and 'Name', with entries such as MR24, MS350-48LP, and MS320-48LP, along with their respective MAC addresses and administrative names like 'ADMIN-ATHLETICS' and 'ADMIN-C-AND-I'.

Missouri school district with over 18,000 students, 2,000 staff members, and 30+ sites

Cloud-based dashboard provides scalability for infrastructure with high density Chromebook usage

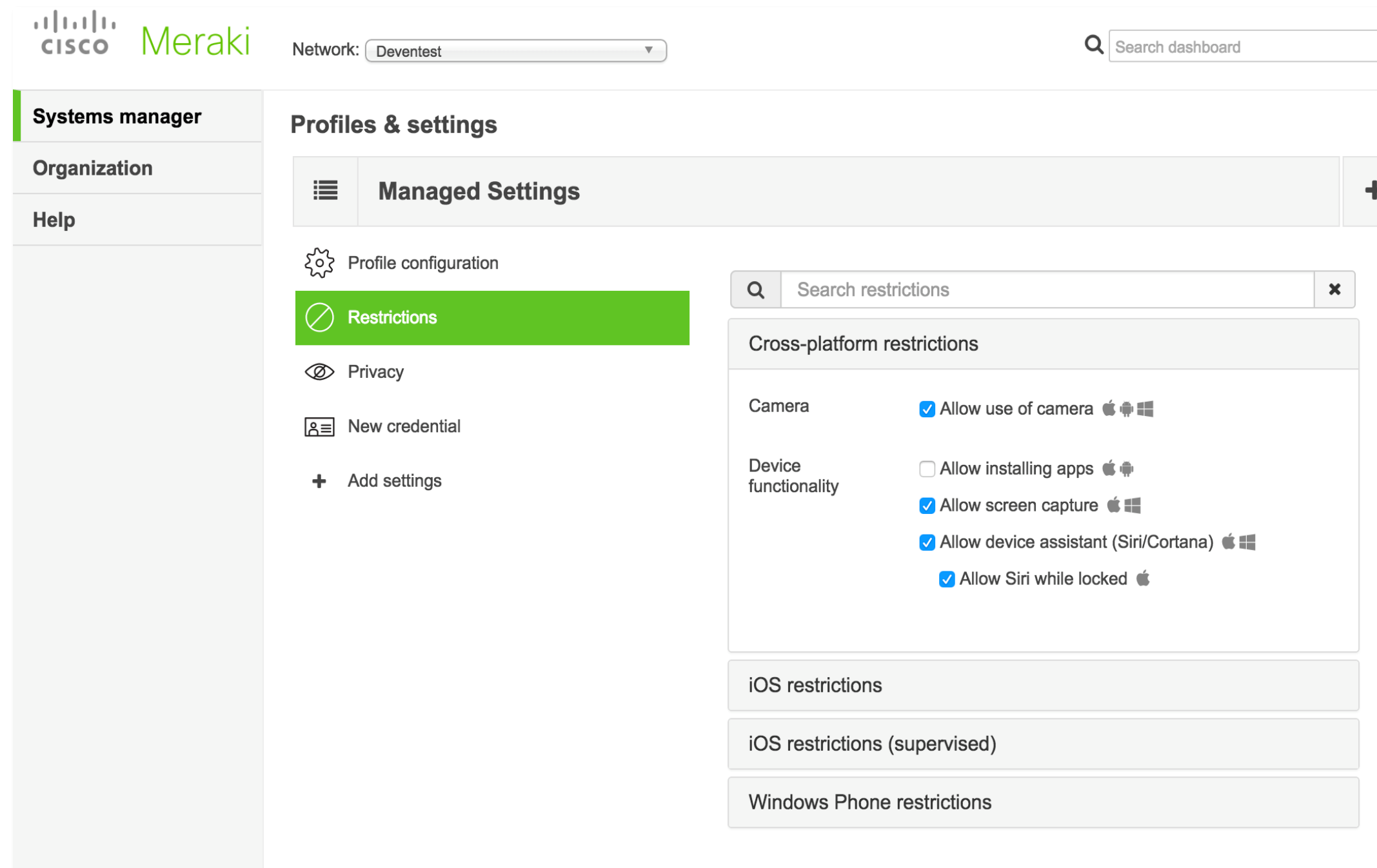
Flexible configurations make group SSID policies simple

Over 1,900 Meraki wireless, security, and switching devices deployed in one summer

“Our educational technology upgrade could not have been possible without the total infrastructure upgrade that we did with Meraki.”

Dr. Amy Gates, Executive Director of Technology, Lee's Summit R-7 School District

Case study: Talbert House



Serves children, adolescents, and adults at 36 sites in 6 different counties

HIPAA compliant devices enable secure access to Electronic Medical Records

Meraki MR access points and MX security appliances deployed at multiple sites, with plans to roll out more

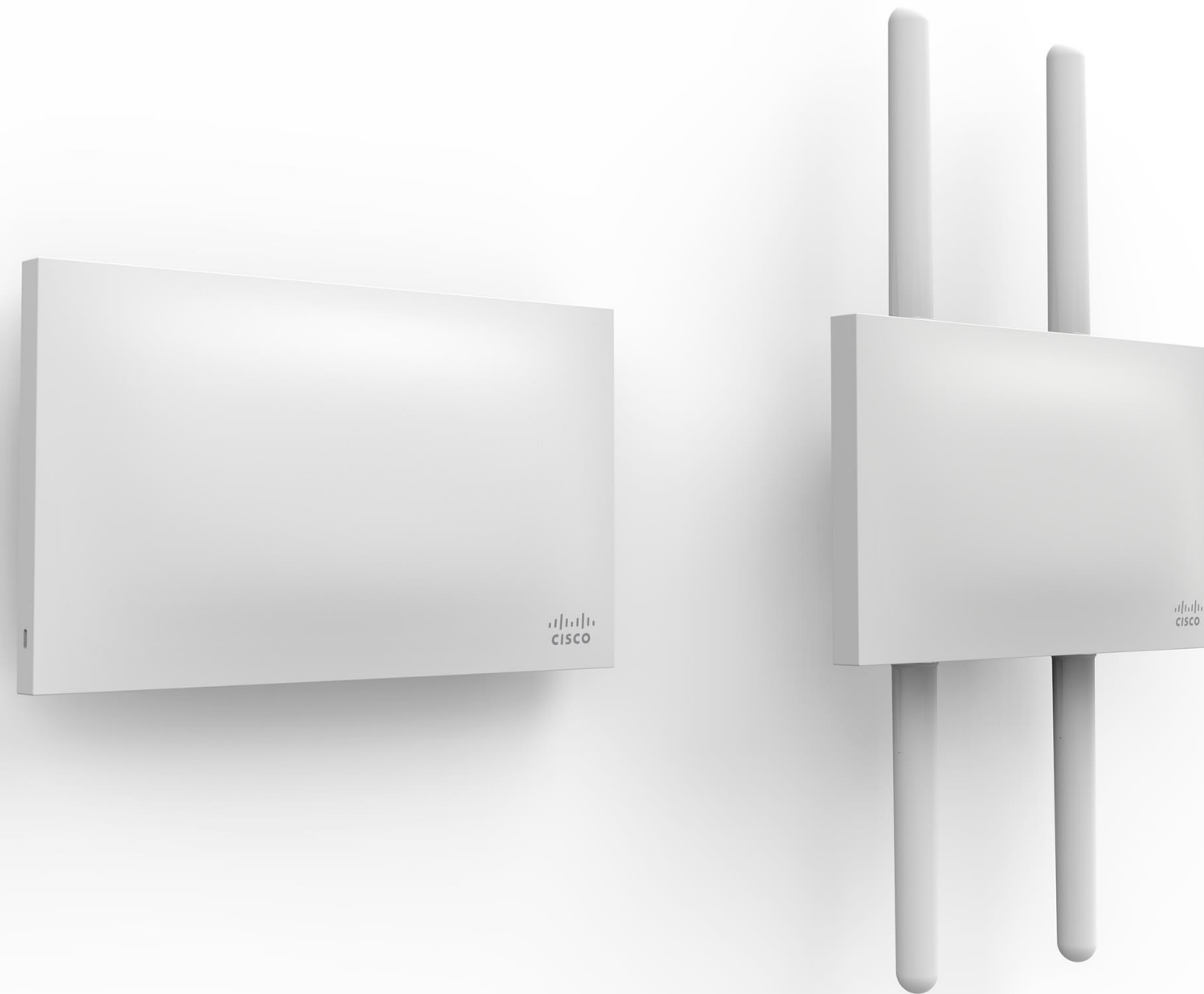
Greater control over facility-owned devices with Systems Manager mobility management

“It’s hard to be responsible for 36 different sites, but with Meraki, you can see all your sites in one convenient location.”

Brad Gray, Network Administrator, Talbert House

Product Families

MR wireless access points



Feature Highlights

Application traffic shaping

Guest access

Enterprise security

WIDS / WIPS

Embedded location analytics

9 models including indoor/outdoor, high performance (802.11ac Wave 2), and value-priced

Enterprise-class silicon including PoE, multigigabit ethernet, voice/video optimization

Lifetime warranty on indoor APs

MX security appliances



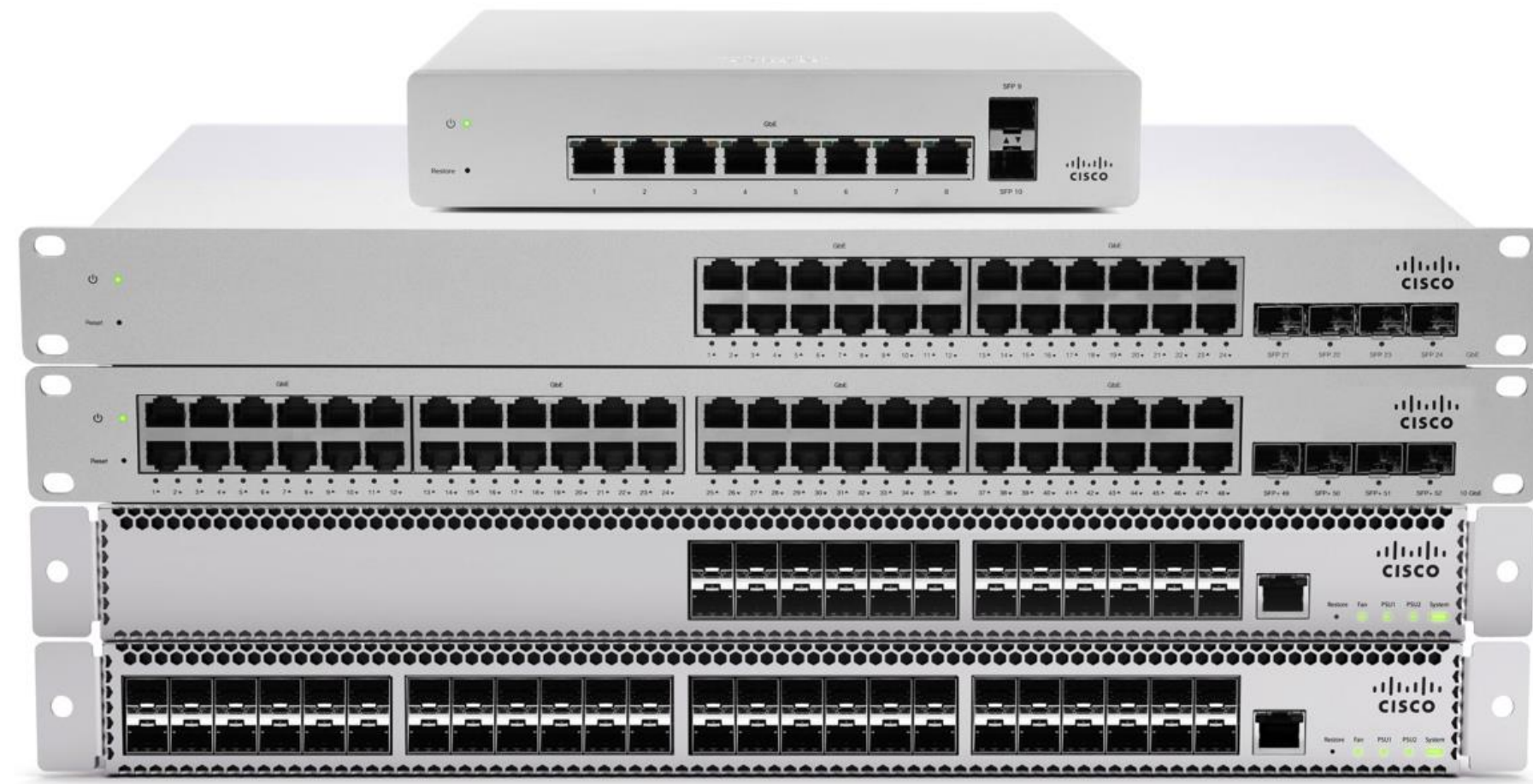
Feature Highlights

- Zero-touch site-to-site VPN
- Intrusion detection/prevention
- Content filtering
- Built-in SD-WAN functionality
- Advanced Malware Protection (AMP)
- Application firewall

9 models scaling from small branch to large campus/data center

Complete networking and security in a single appliance

MS access & aggregation switches



Feature Highlights

Voice and video QoS

Layer 7 app visibility

Virtual stacking

Multigigabit

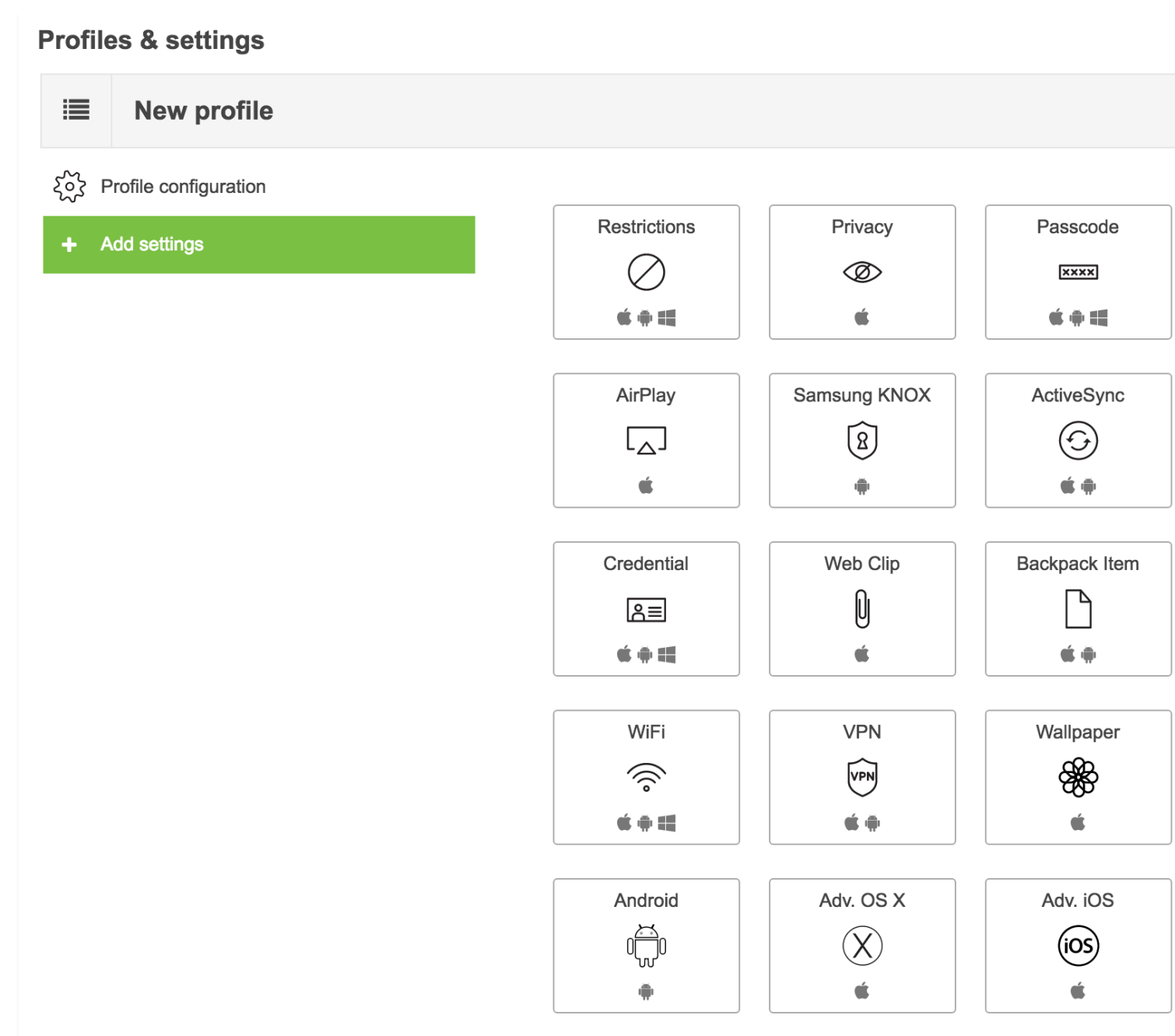
Remote packet capture, cable testing

Gigabit access switches in 8, 24, and 48 port configurations; PoE available on all ports

Fiber aggregation switches in 16 and 32 port configurations

Enterprise-class performance and reliability including non-blocking performance

Systems Manager EMM



Feature Highlights

Device posture reporting

Rapid provisioning

Integration with Apple's DEP and VPP

Streamlined network integration

Intelligent group policies and tagging

Device management tool controls iOS, Android, Mac, and Windows devices

Cloud-based: no on-site appliances or software; works with any vendor's network

Seamless integration with Apple's Volume Purchase Program and Device Enrollment Program for effortless app deployment

MC communications



Feature Highlights

Phone number provisioning through dashboard

Google Apps and Active Directory integration

End user web portal

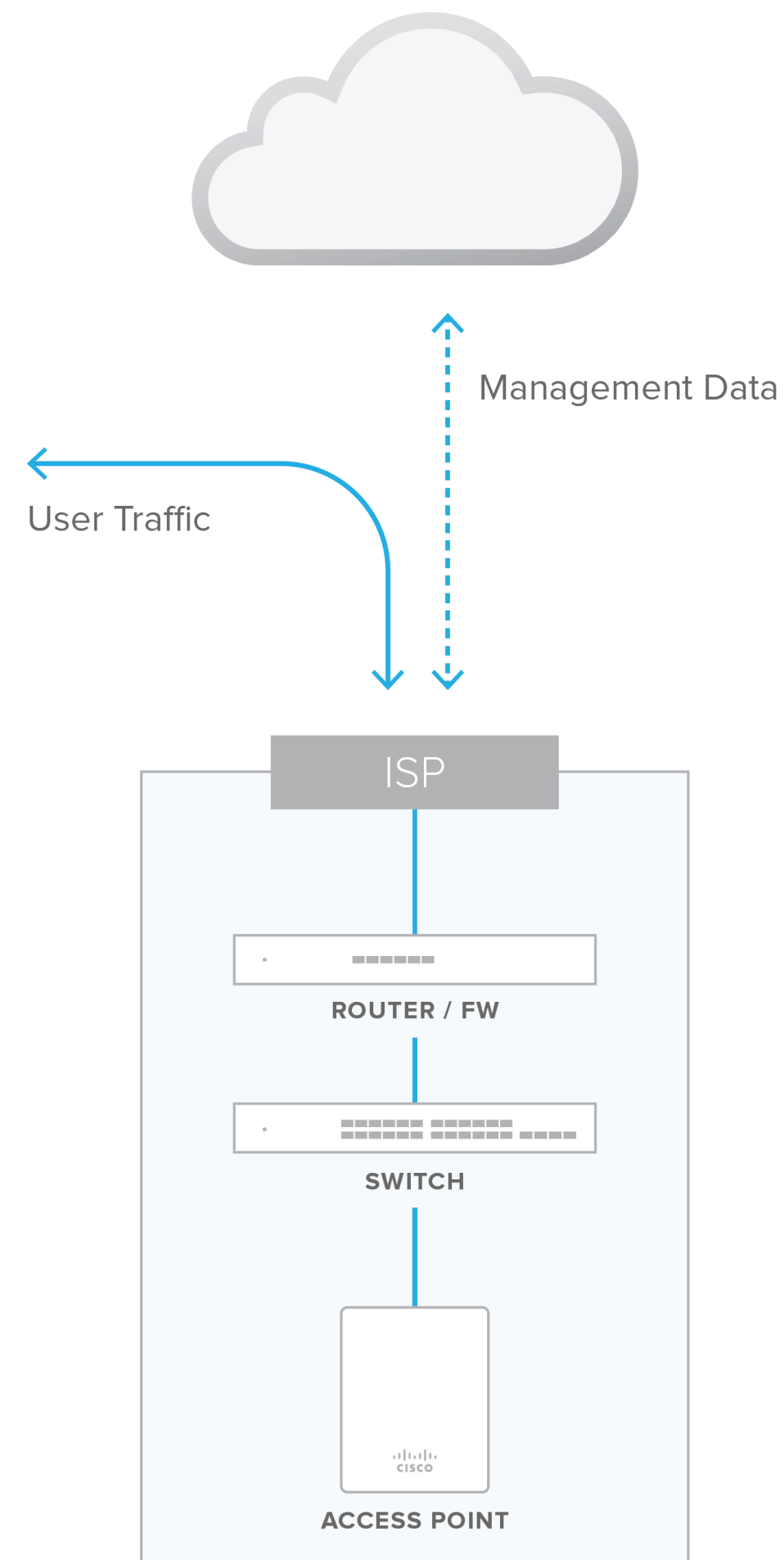
High quality hardware with touchscreen for automatic software updates

Effortless deployment without the need for any on-site infrastructure

Compatible with a wide range of popular headsets

2 year warranty

Out of band cloud management



Scalable

Unlimited throughput, no bottlenecks
Add devices or sites in minutes

Reliable

Highly available cloud with multiple datacenters
Network functions even if connection to cloud is interrupted
99.99% uptime SLA

Secure

No user traffic passes through cloud
Fully HIPAA / PCI compliant (level 1 certified)
3rd party security audits, daily penetration testing
Automatic firmware and security updates (user-scheduled)

Reliability and security information at meraki.cisco.com/trust

Try Cisco Meraki risk-free

Sets up in 15 minutes

Technical support available at no cost



Free trials available at
meraki.com/eval