



If a leased line has
no boundaries,
why limit yourself ?

Celcom WIRELESS Leased Line



- **Celcom Axiata Berhad**
- Unprecedented 15 consecutive quarters of growth
- Leading mobile broadband provider in Malaysia
- Widest coverage - Celcom's 3G services are available at the peak of Mount Kinabalu and its 2G services are accessible at the Maliau Basin in the remote jungles of Sabah
- With more than 10.1 million users on its network, Celcom is one of the largest telecommunications service providers in Malaysia and the region. Its core business remains prepaid and postpaid mobile voice services, but Celcom has also achieved significant growth in mobile broadband, m-commerce, enterprise solutions and bulk wholesale services.
- Celcom continues to have the widest network coverage in the country. Through ongoing investments in network coverage, capacity and performance, Celcom intends to maintain its leadership and position in technology as the country's best mobile service provid

Celcom Wireless Leased Line

- Celcom Wireless Leased Line operating since 1994
- Celcom Wireless Leased Line is available either as a 'Point to Point' line facilitating the transfer of data between two or more offices or as an 'Internet Access' line via Celcom's Internet Point of Presence providing an office with a high-speed, reliable method of connecting to the internet.
- Each wireless leased line is dedicated to an individual company delivering a private and secure service, with uncontended access.
- Nationwide service coverage
- SLA **99.95%**



Why Wireless ?

- Scalability, flexibility, robustness and mobility of the network supporting the surveillance system deployment
- Weatherproof and non-sensitivity to bad weather
- Reduces deployment and maintenance cost
- Minimize the need for new ground infrastructure trenching
- Fast deployment virtually anywhere

Slow installations?

Not with Celcom Wireless Leased Line
No way-leave, no road to dig up, no excuses



Wireless Digital Microwave System

- The Outstanding new generation microwave equipment
- Frequency range is 7GHz to 38GHz
- Capacities range is 2Mbps to 155Mbps
- Design for high reliability
- Compact and small size with indoor/outdoor design
- Friendly management interface
- Simple and quick installation



Point to Point & Point to Multipoint

For the Point to Point or Point to Multipoint service, a receiver dish is installed on the two or more premises to be linked by the wireless leased line. The line transmits radio or microwave technology frequencies to a receiver, giving the same high quality as a fixed line.

Celcom's wireless leased line service is an excellent alternative to traditional fixed leased lines, particularly for those companies which are in remote locations or want a competitively priced wireless solution

It can be also a great back-up solution for organisations with an existing fixed-line application.



Simple!

The fixed pricing model

Celcom Wireless Leased Line Internet

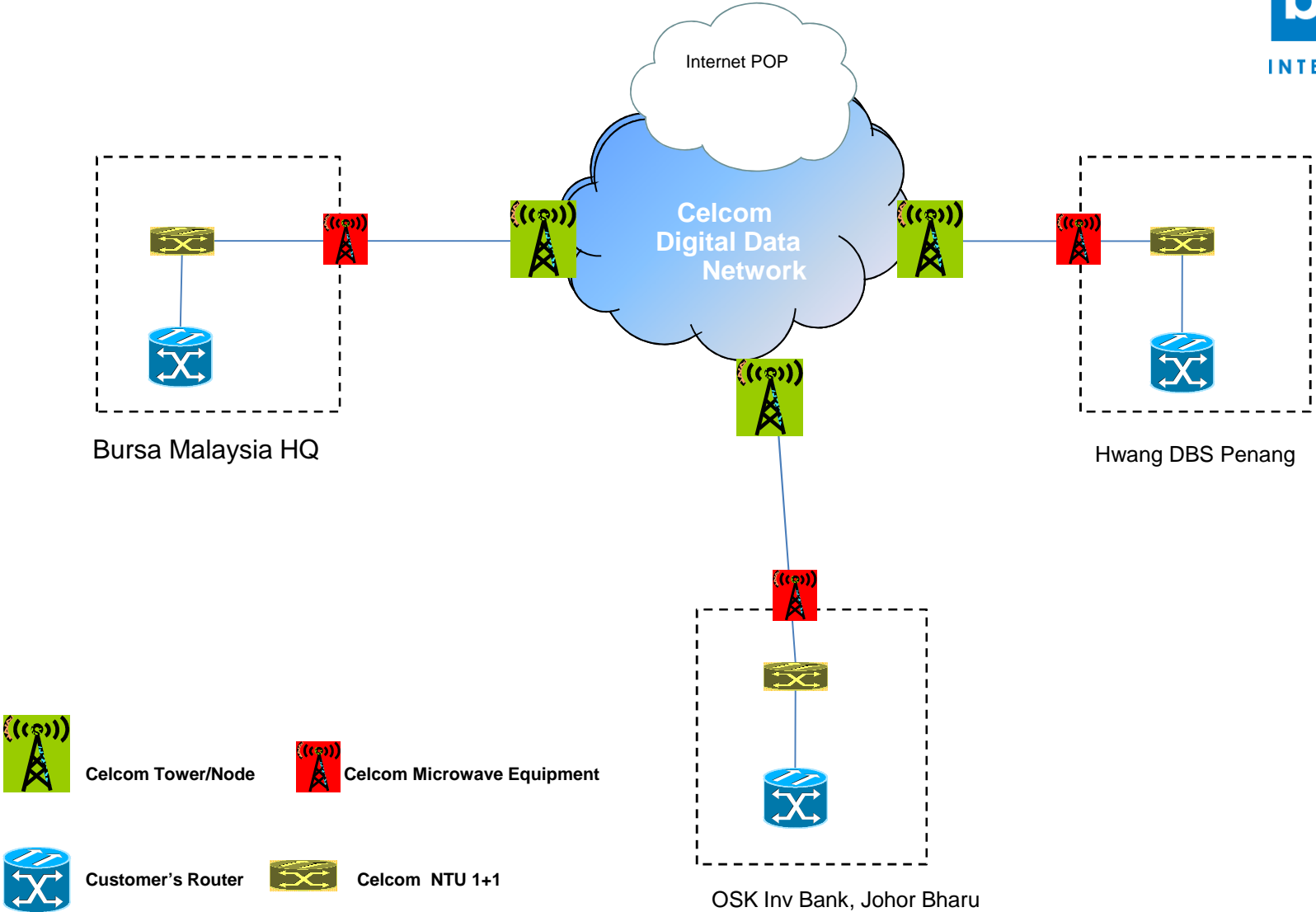
We offer you 24x7 dedicated Internet service that is fast, reliable and conveniently connected from your corporate local area network (LAN) to the public network.

What you get

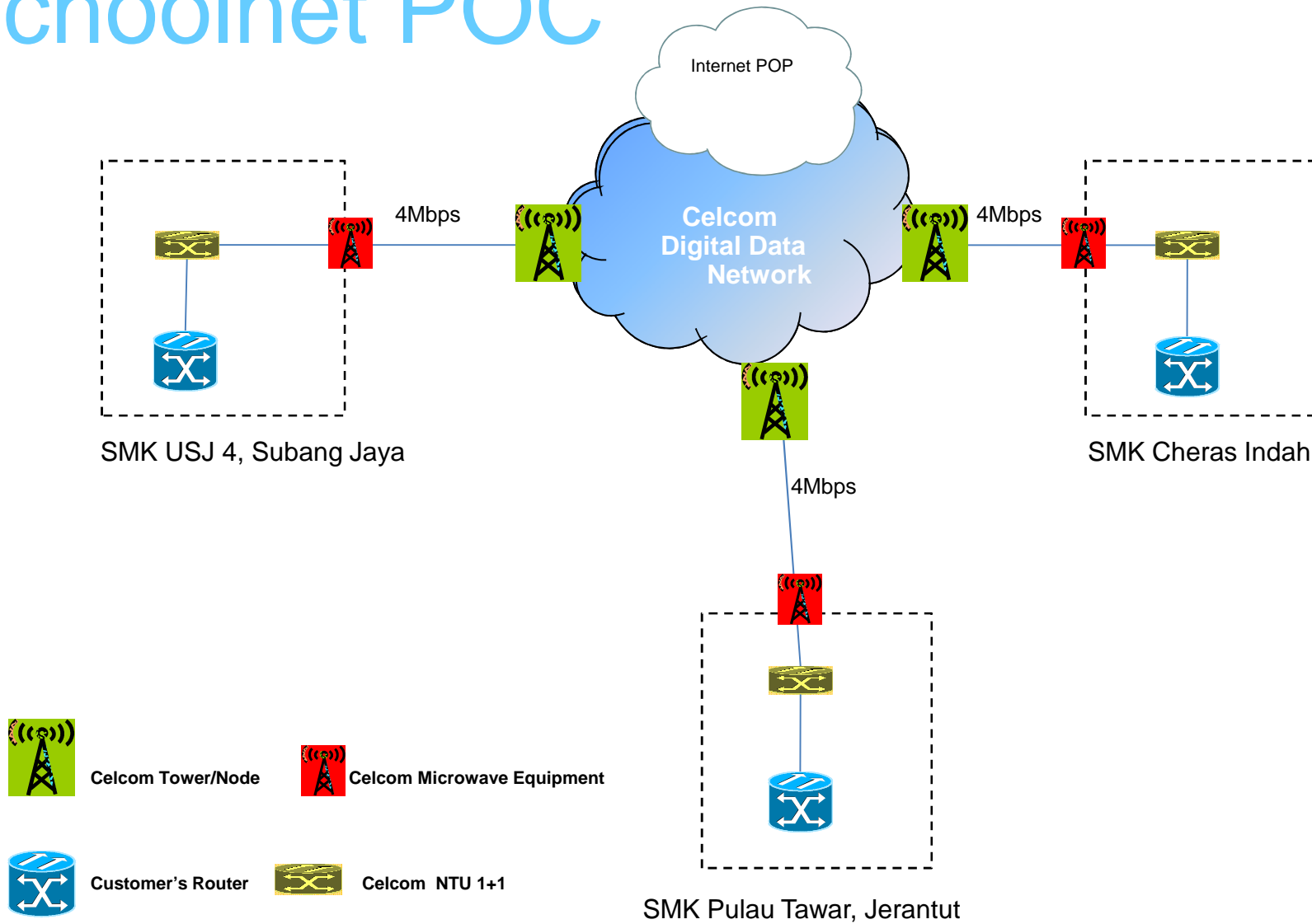
Bandwidth denomination
Contention Ratio
Interface (CPE)
Upload/Download

1Mbps to 155Mbps
1:3
V.35 G703
Symmetric

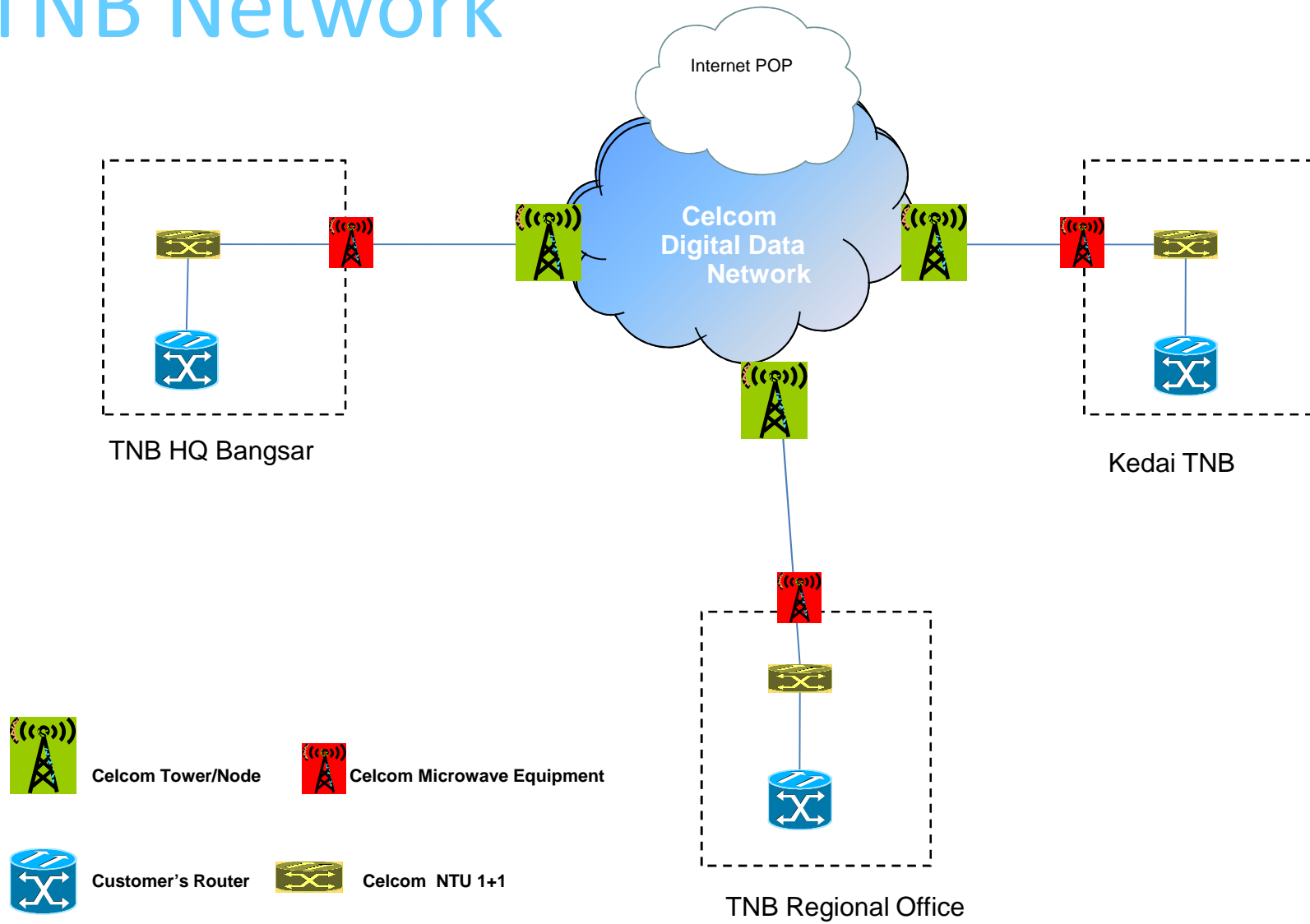
Bursa Malaysia Network



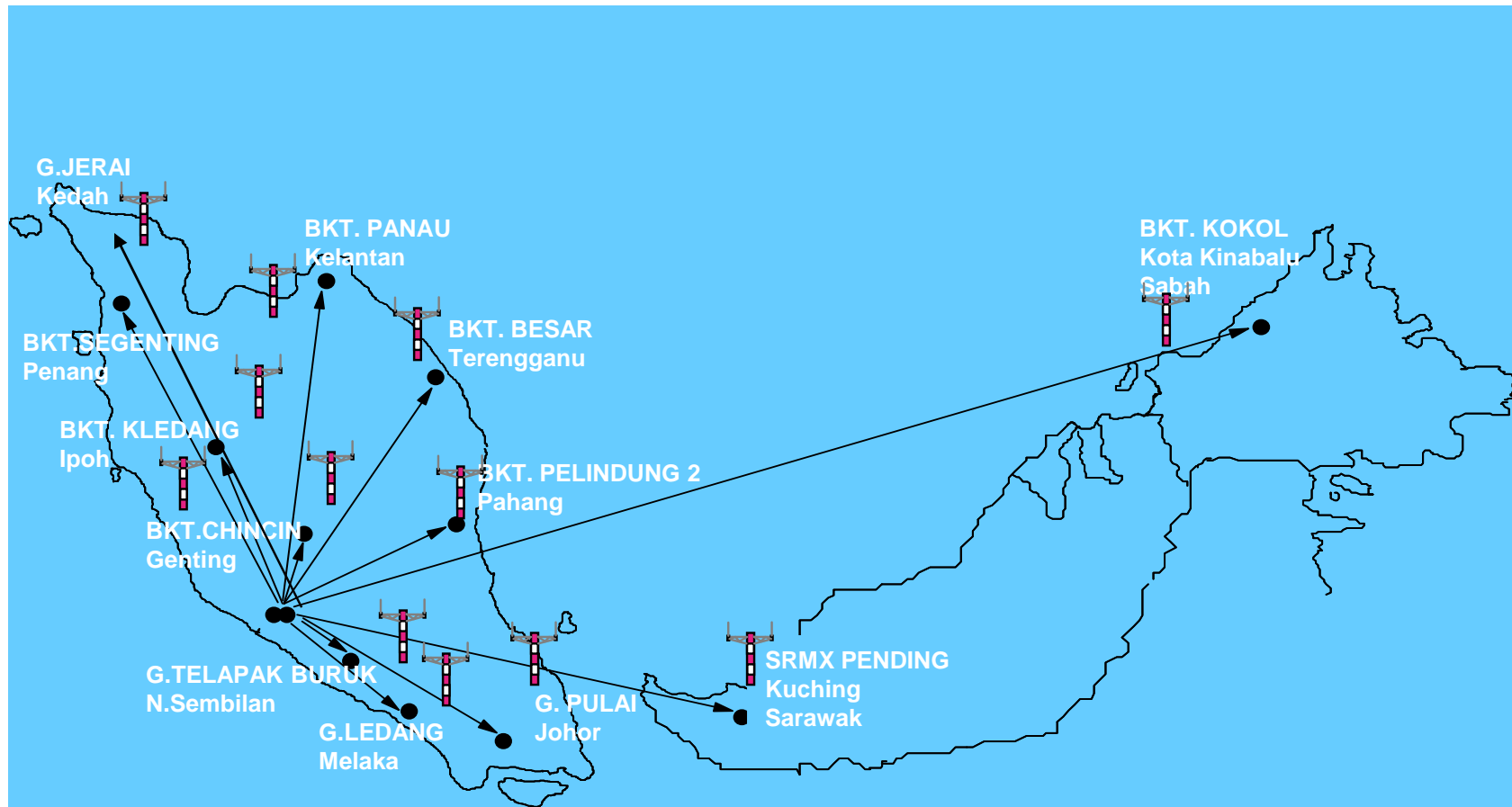
Schoolnet POC



TNB Network



Radio & TV Network



We have huge network reach

- Supported by extensive network coverage comprises of mixture of fiber optics, microwave and satellite earth station, Celcom will ensure your network getting the highest quality, priority and resiliency features.
- Your network will, in most cases be automatically rerouted to the next available shorter alternate path in the event of primary link failure.
- The routing decision is based upon real-time and transparent to the end-user



We have a great service reputation

- We believe in putting the customer at the heart of what we do. We have experienced in providing telecommunications services for teams and live telecast TV broadcasting transmission provider at Sepang F1 Circuit
- We've over 16 years experience in delivering communication solutions, simple or complex, small scale or nationwide, for business and public sector organizations.
- Our sales and support teams are located nationwide.

Responsiveness



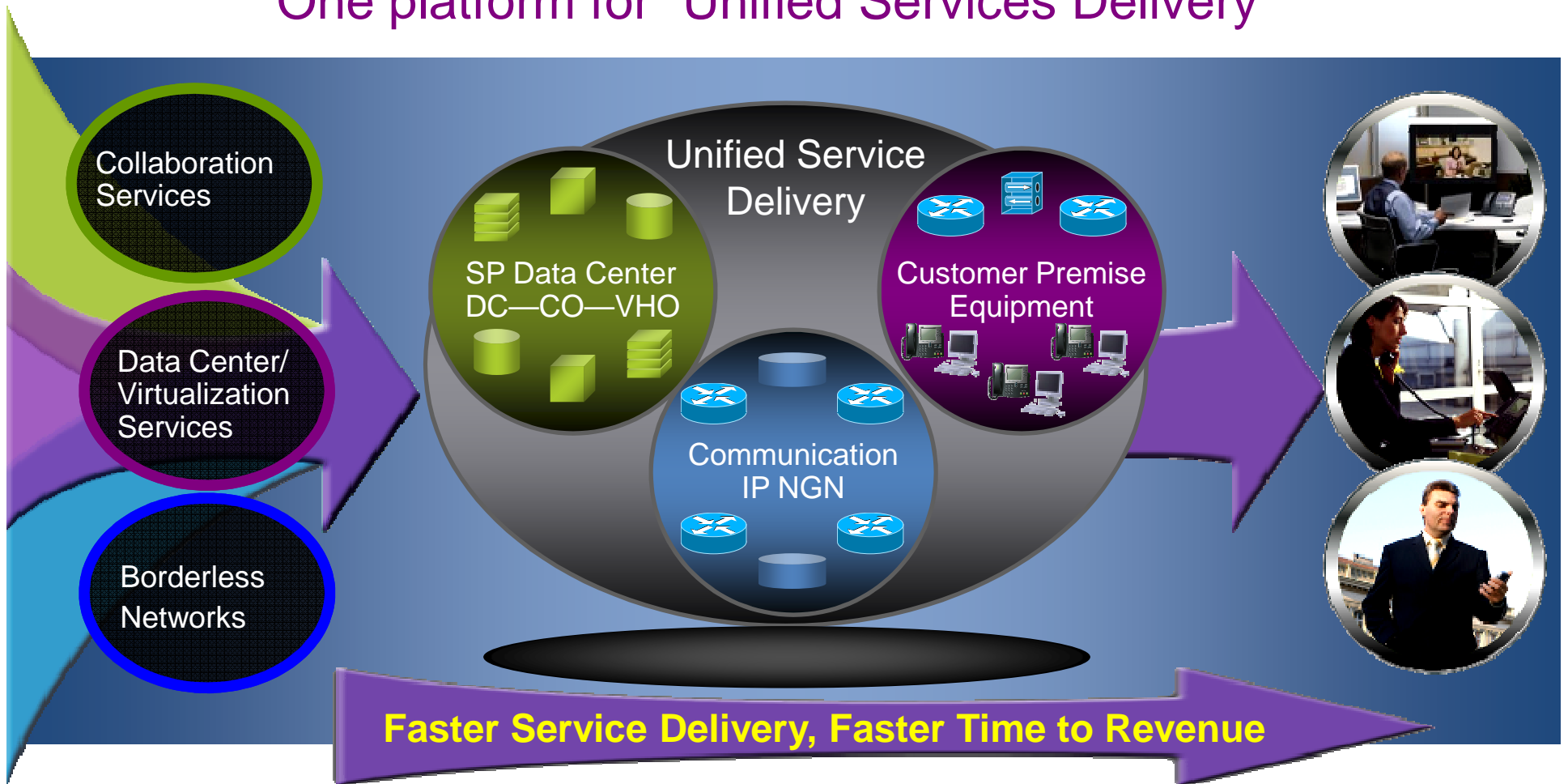
- Our network is manned and monitored by a group of committed technical support. Our NMC is equipped with latest maintenance tools and systems with the sole purpose of continuously improving its maintenance and ensure that the network running efficiently.
- NMC provides 24 hours a day and 7 days a week on-line support via our intelligent Network Management System.

Customers



Cisco Managed Service Architecture

One platform for “Unified Services Delivery”



Develop Differentiated Services

“Envision”

Reduce Risk, Cost, and Time to market

“Build & Operate”

Accelerate Success and Profitability

“Market & Sell”

- Refine CapEx and OpEx for reduced TCO
- Improve asset utilization, ROI/ROA

Celcom – Cisco Smart Partnership



Managed Service Architecture - platform for “Unified Services Delivery”



Coming soon...

value added services and integrated solutions



Speed, Flexibility and Integrated experience for customers



- Residential
- Business
- Mobile

THANK YOU
for making the
right choice



Service Provider of the Year 2010