



# Secure Service Edge og SDWAN



# Når denne session er ovre ved du

- Hvad er :
  - Secure Internet Access
  - Secure Private Access
  - SSE
  - SDWAN
  - SASE
  - Cisco+ Secure connect
  - Cisco Secure Access
  - SD-Routing
- Hvorfor Cisco Secure Access

# What is SSE (Gartner)

## Secure Internet Access



Internet apps



SaaS apps



Zero trust  
Network  
Access



## Secure Private Access



Private apps



## Security Service Edge (SSE)

Secure Access  
from anywhere to  
everywhere

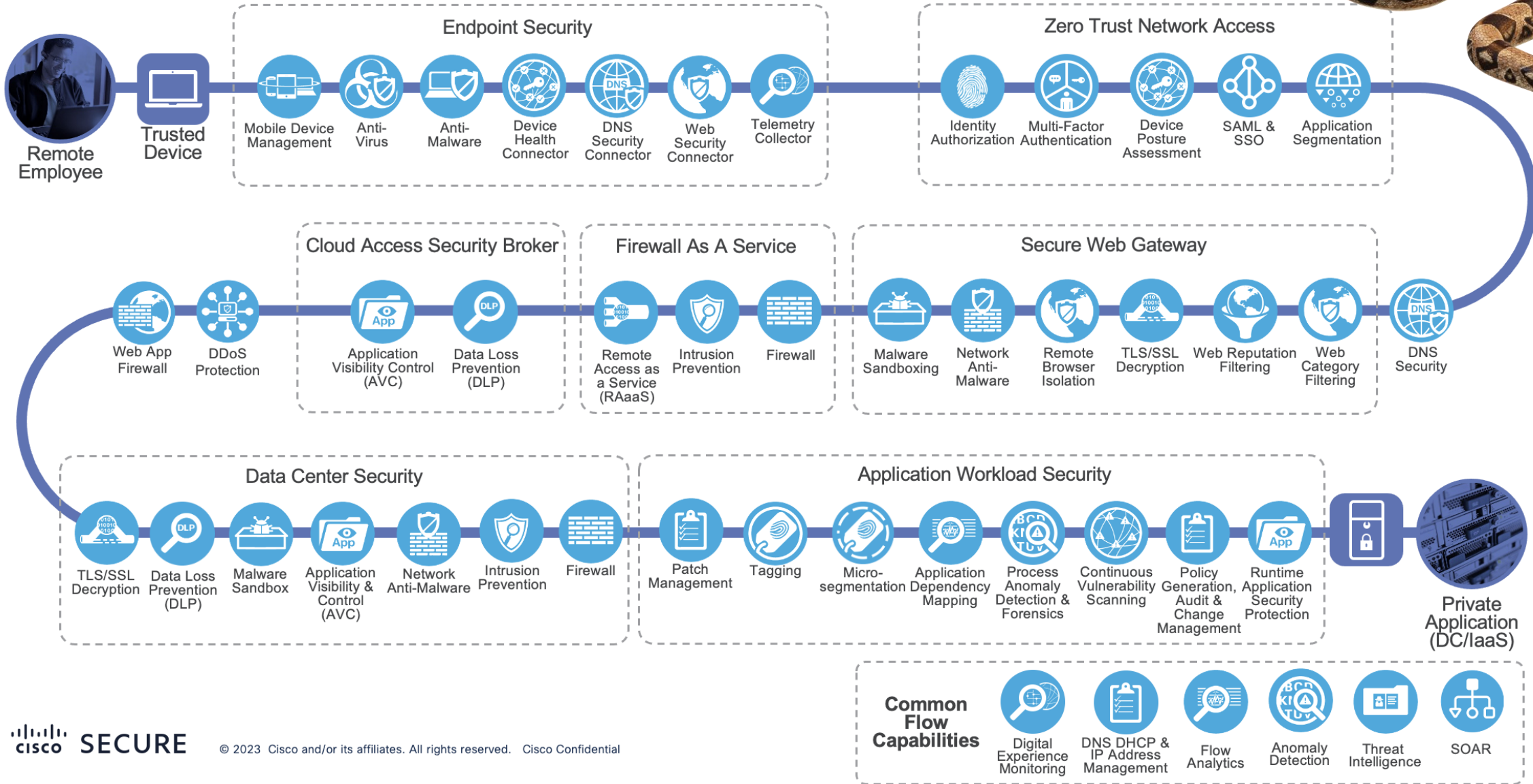
# What is Cisco Secure Access (Cisco+ Secure Connect)

Go beyond core Secure Service Edge (SSE) to better connect and protect your business



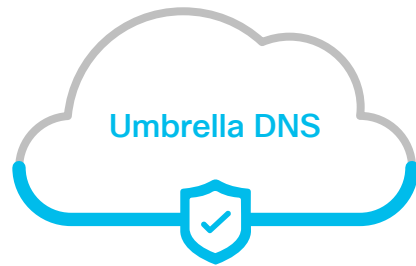


# Cisco Secure Access er super simpelt



# Umbrella – Cisco Secure Access Evolution

1.0



## Secure web access

Provide users with safe access to websites and cloud applications from any location and block malicious activity and threats

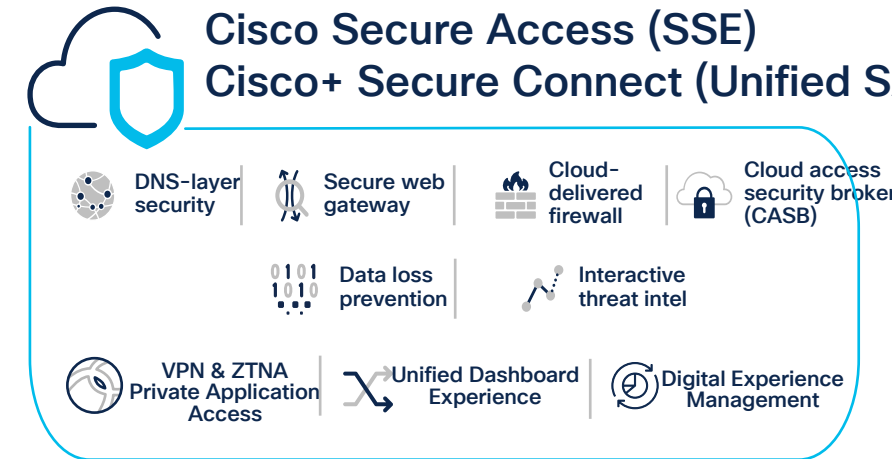
2.0



## Secure internet access

Provide users with safe access to the internet and cloud applications from any location and block malicious activity and threats

3.0



## Secure internet access

Provide users with safe access to the internet and cloud applications from any location and block malicious activity and threats

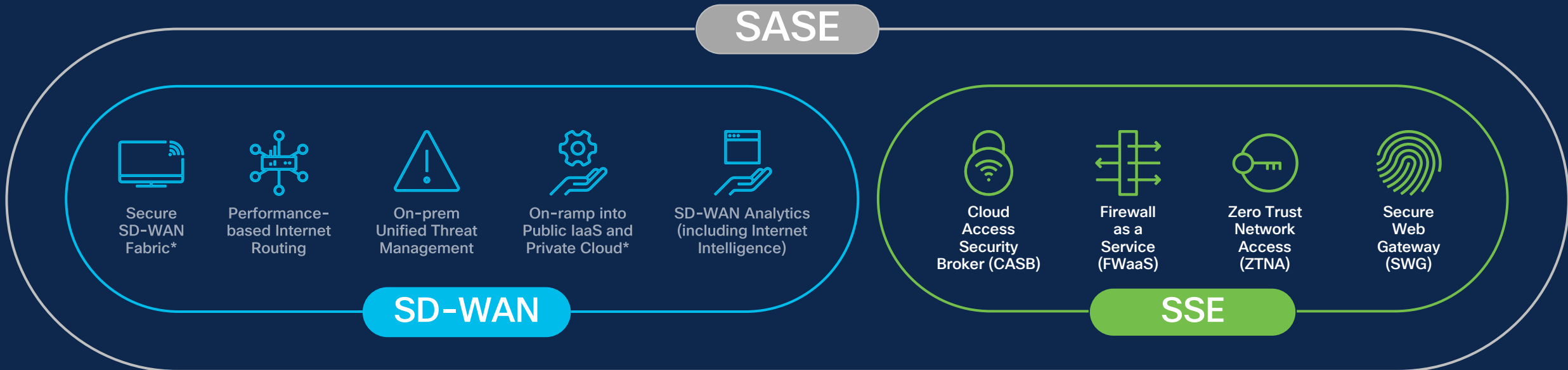
## Secure private access leveraging Zero-Trust Principles

Deliver secure connections to company assets in private data centers or in the private cloud.

## Interconnect

Dramatically simplify architecture and configuration by inherently interconnecting anything you connect to the SASE Fabric

# What is SASE



Så nu har vi lært at :

Secure Internet Access + Secure Private Access = SSE

SSE+SDWAN = SASE

SSE done the right way = Cisco+ Secure connect and Cisco Secure Access

Funktionalitetsmæssigt er Cisco+ Secure connect = Cisco Secure Access



# Eliminate unnecessary decisions



How would you like  
your water delivered?

VPN ☐

ZTNA ☐

Direct ☐

SaaS ☐



Private apps



Internet apps

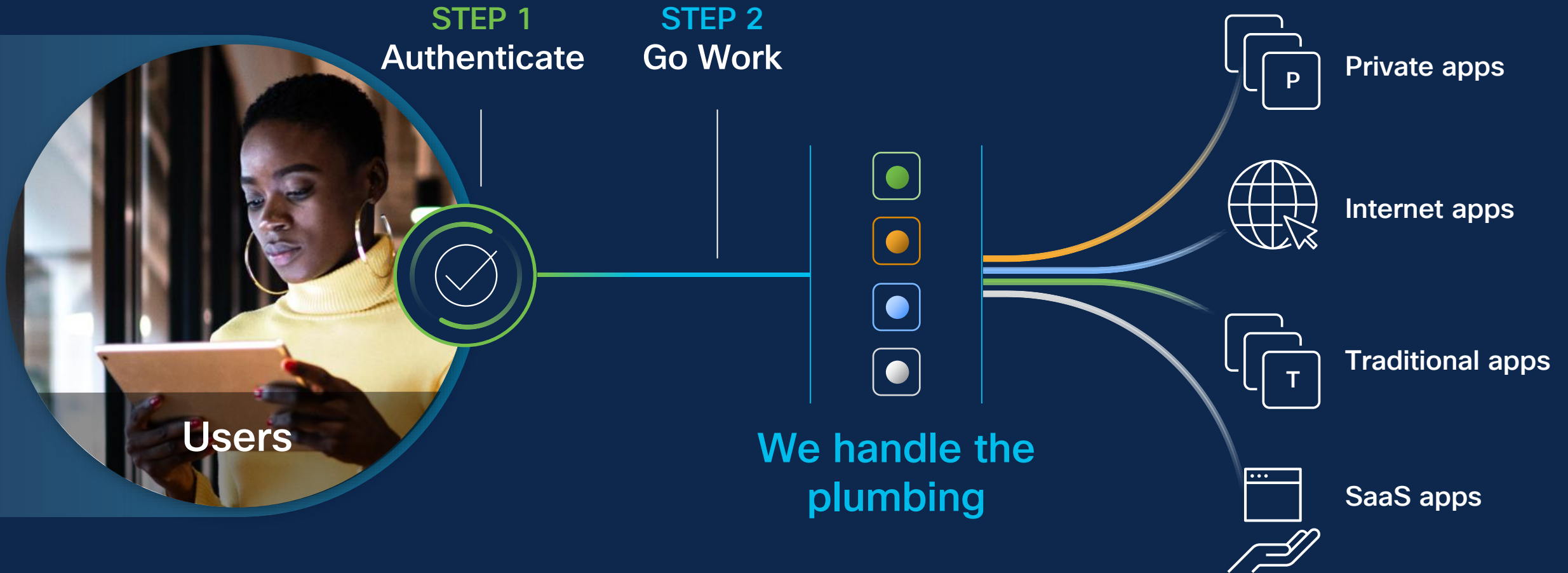


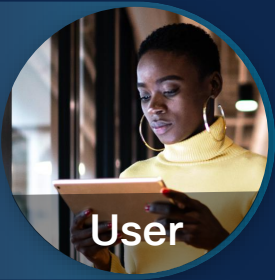
Traditional apps



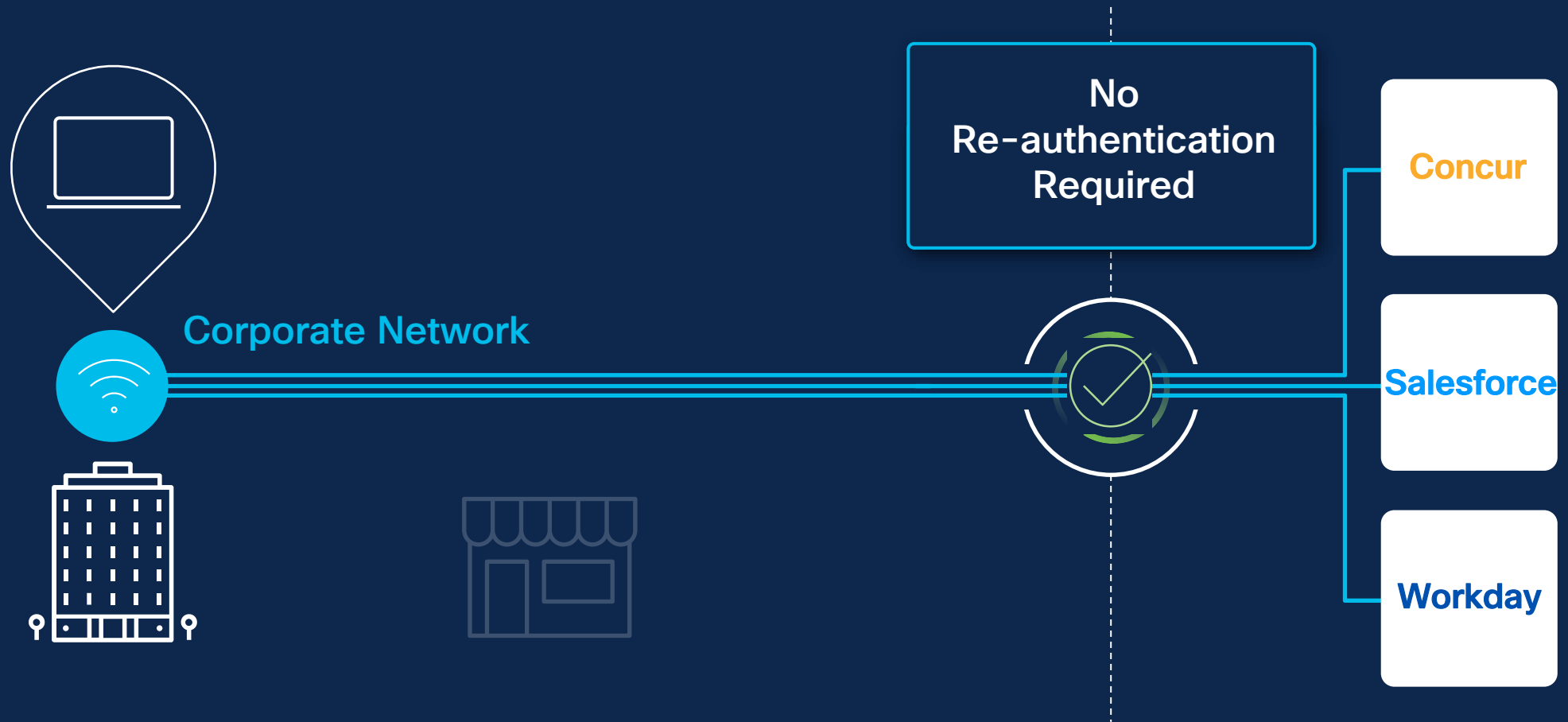
SaaS apps

# Seamless user to app Zero Trust





# Smooth and **easy** intelligent access





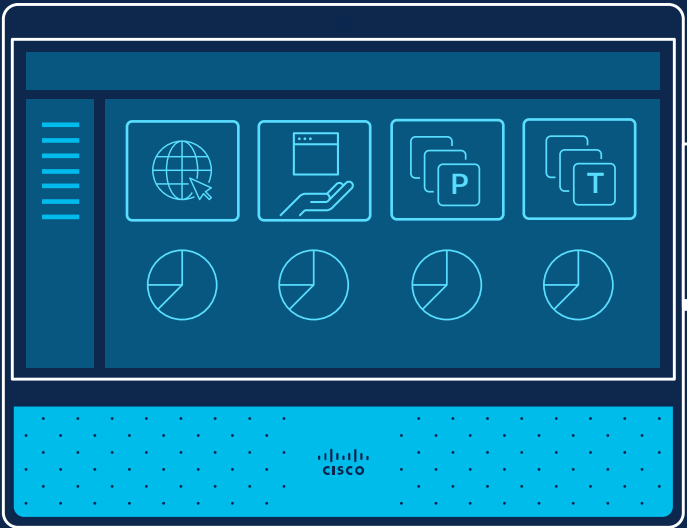
# Smooth and easy **intelligent** access



# Centralized policy management simplifies security



## Cisco Security Cloud



Single central, cloud-based console



Private apps



Internet apps



Traditional apps



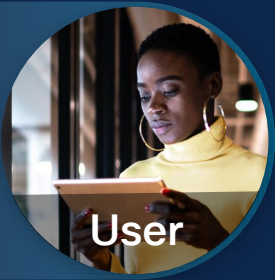
SaaS apps

Data protected

Malware stopped

Policies unified

Experience monitored



# Cisco ensures a great **user experience**

**ThousandEyes**



**Client**



**WiFi**



**Broadband**



**Network**



**Application**

Built into Cisco  
SD-WAN

Robust, fault tolerant  
global network

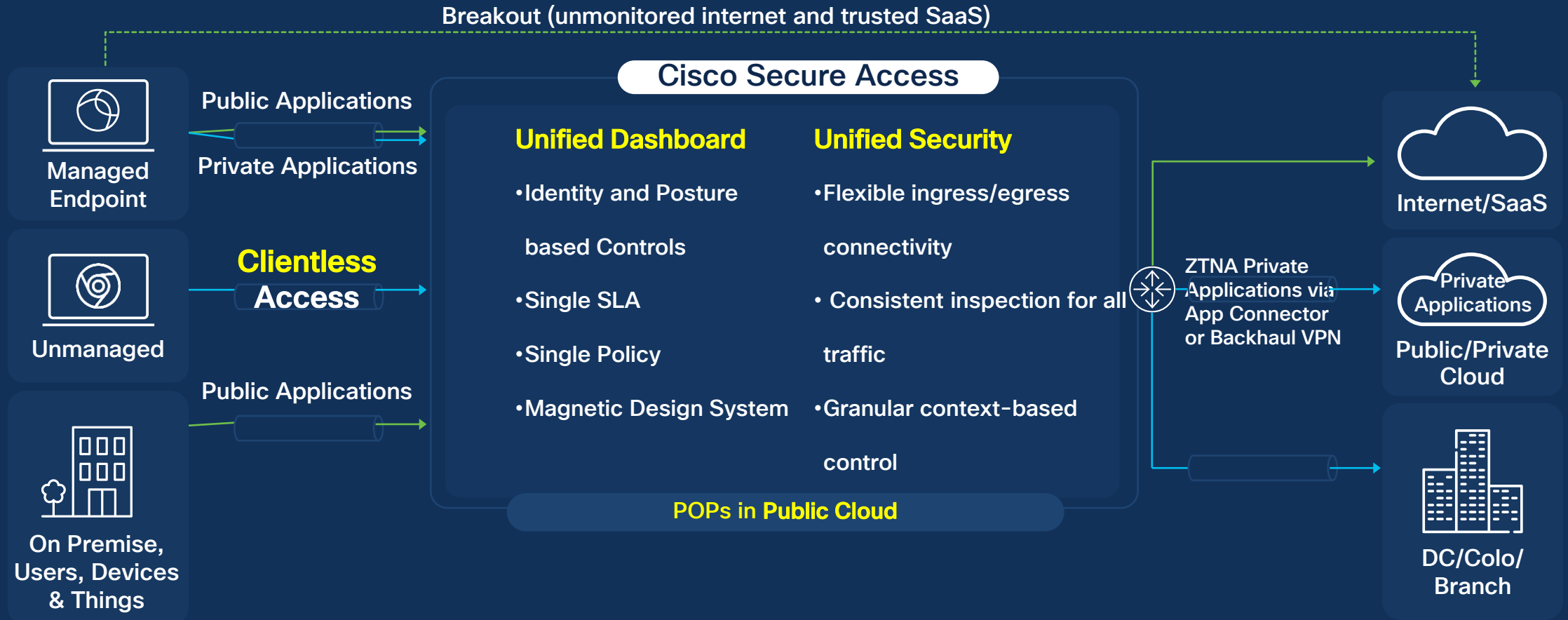
Target latency of  
~40ms or less for 99%  
of users

Built on industry leading  
QUIC protocol

# Architecture Overview



Slido SecureAccess



Users & Devices

How

Apps

# One Dashboard

The screenshot displays the Cisco Secure Access dashboard. The top navigation bar includes the Cisco logo and the text "Secure Access". A left-hand sidebar contains a menu with the following items: Overview (selected), Connect, Resources, Secure, Monitor, Admin, and Workflows. The main content area is titled "Overview" with a "read-only" status indicator. Below the title, a descriptive sentence states: "The Overview dashboard displays status, usage, and health metrics for your organization. Use this information to add".

A prominent section titled "Get started with Cisco Secure Access" features a progress bar indicating "0/3 steps complete". This section contains a vertical list of three tasks:

- 1 Configure infrastructure** (Status: Not Started) - Connect your organization's infrastructure to Secure Access.
- 2 Secure resources and access** (Status: In Progress) - Define your private resources, endpoint posture profiles, IPS, security profiles and access policies.
- 3 Configure end user connectivity** (Status: In Progress) - Configure DNS Servers, Zero Trust Access, virtual private networks and view instructions for packaging the Cisco Secure client.





Overview



Connect



Resources



Secure



Monitor



Admin



Workflows

## Overview

read-only

The Overview dashboard displays status, u

### Essentials

#### Network Connections

Connect data centers, tunnels, resource connectors

#### Users and Groups

Provision and manage users and groups for use in access rules

#### End User Connectivity

Manage traffic steering from endpoints to Secure Access

2

### Secure resources a

Define your private resour security profiles and acce



Overview



Connect



Resources



Secure



Monitor



Admin



Workflows

## Overview

read-only

The Overview dashboard displays status, u

### Sources and destinations

#### Private Resources

Define internal applications and other resources for use in access rules

#### Registered Networks

Point your networks to our servers

#### Internal Networks

Define internal network segments to use as sources in access rules

#### Internet and SaaS Resources

Define destinations for internet access rules

#### Roaming Devices

Mac and Windows



Overview



Connect



Resources



Secure Access



Monitor



Admin



Workflows

# Overview

 read-only

The Overview dashboard displays status, usage, and health metrics for your organization. Use this information to ad

## Get started with Cisco Secure Access

### Sources and destinations

To start protecting your organization's users and then follow the tasks listed here t

#### Policy

##### Access Policy

Create rules to control and secure access to private and internet destinations

##### Data Loss Prevention Policy

Prevent data loss/leakage with policy rules

#### Profiles

##### Endpoint Posture Profiles

Configure requirements for end-user devices connecting to private resources

##### IPS Profiles

Configure settings for intrusion prevention

##### Web Profiles

Configure web security settings for use in internet access rules

#### Settings

##### Threat Categories

Choose types of harmful destinations to restrict access to

##### Notification Pages

Configure notifications to present to end users who try to access blocked or warned destinations.

##### Do Not Decrypt Lists

Specify destinations for traffic that must never be decrypted

##### Certificates

Provide certificates needed to decrypt traffic, present end-user notifications, and authenticate



Overview



Connect



Resources



Secure



Monitor



Admin



Workflows

## Overview

read-only

The Overview dashboard displays status, usage, and health metrics for your organization.



## Get started with Cisco Secure Access

Choose how you want to start protecting your organization's users and devices.

0/3 steps complete

### Reports

Remote Access Logs

Activity Search

Traffic logs

Security Activity

Security events and top threats

App Discovery

Discover and analyze network applications

Top Destinations

Top domains visited by DNS

Top Categories

Top security and content categories by DNS

Data Loss Prevention

Data violations detected through the Real Time and SaaS API rules

Cloud Malware

View and manage detected malware events

### Management

Exported Reports

Scheduled Reports

Admin Audit Log

Nu ved DU hvad forskellen er på disse ting :

- Secure Internet Access
- Secure Private Access
- SSE
- SDWAN
- SASE
- Cisco+ Secure connect
- Cisco Secure Access





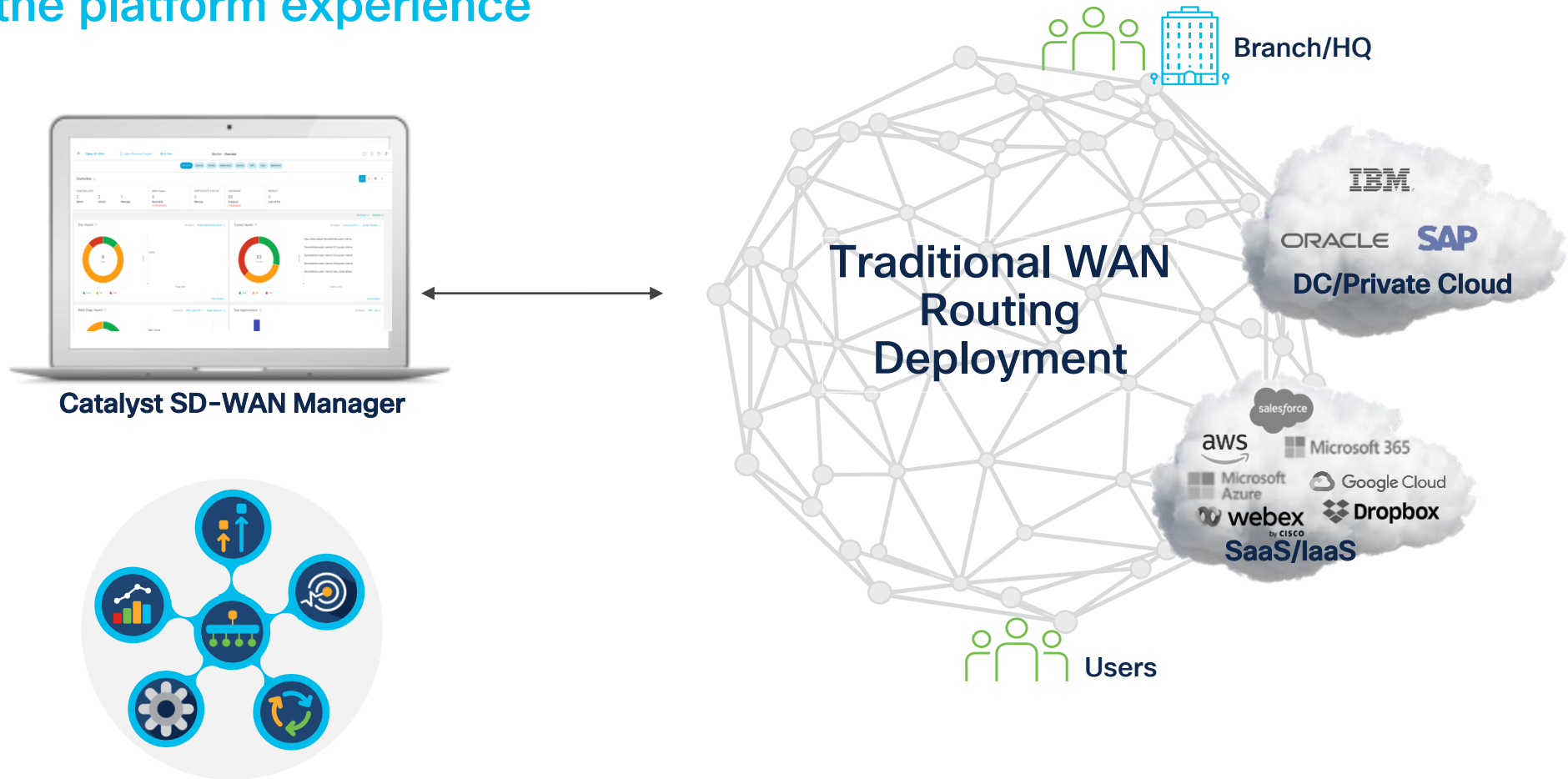
# Cisco Secure Access Simplify / Unify





# Introducing SD-Routing

Transform the platform experience



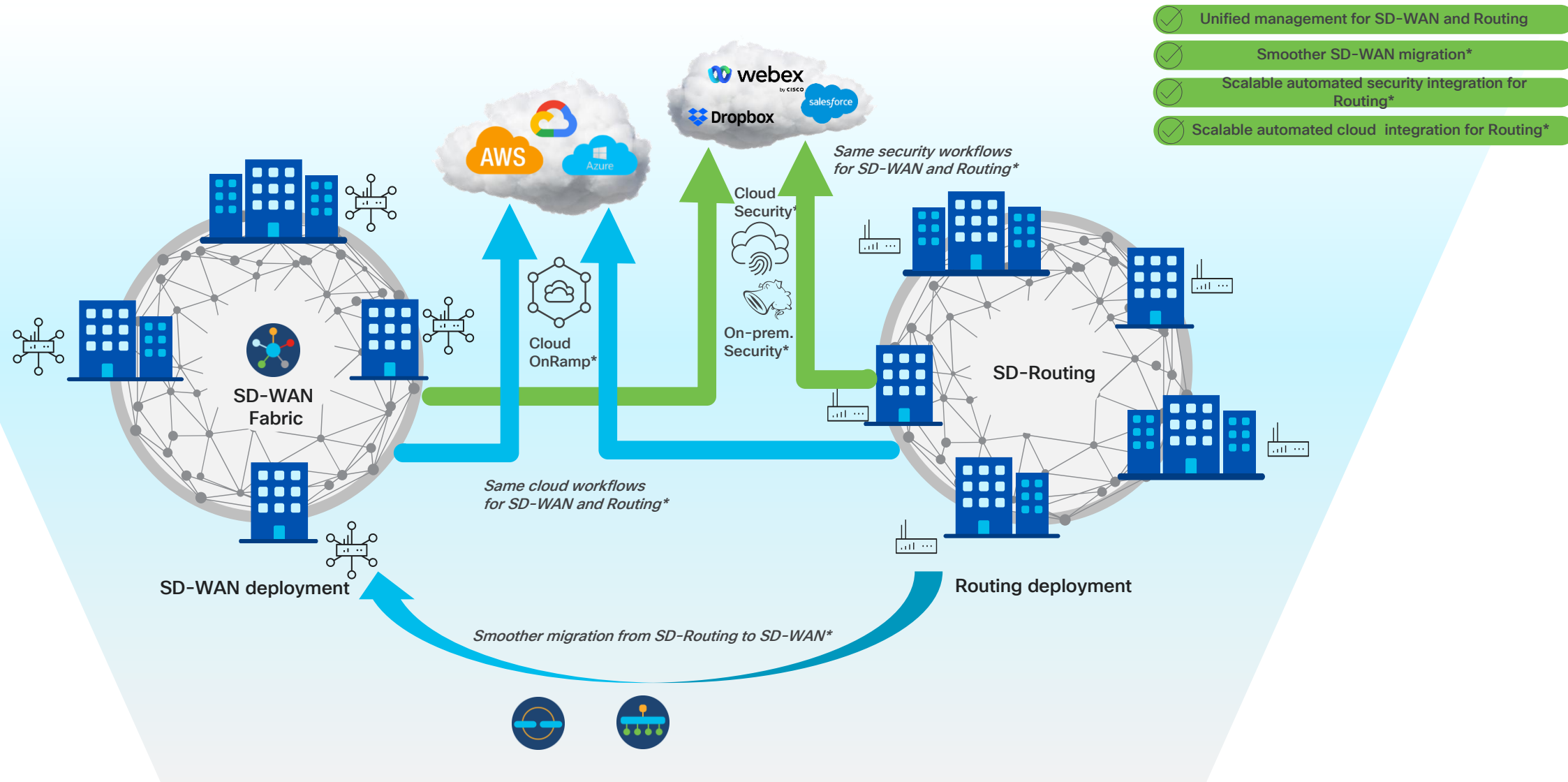
Simplicity and Agility

OpEx Reduction

Future-Ready WAN

Multi-layered Security

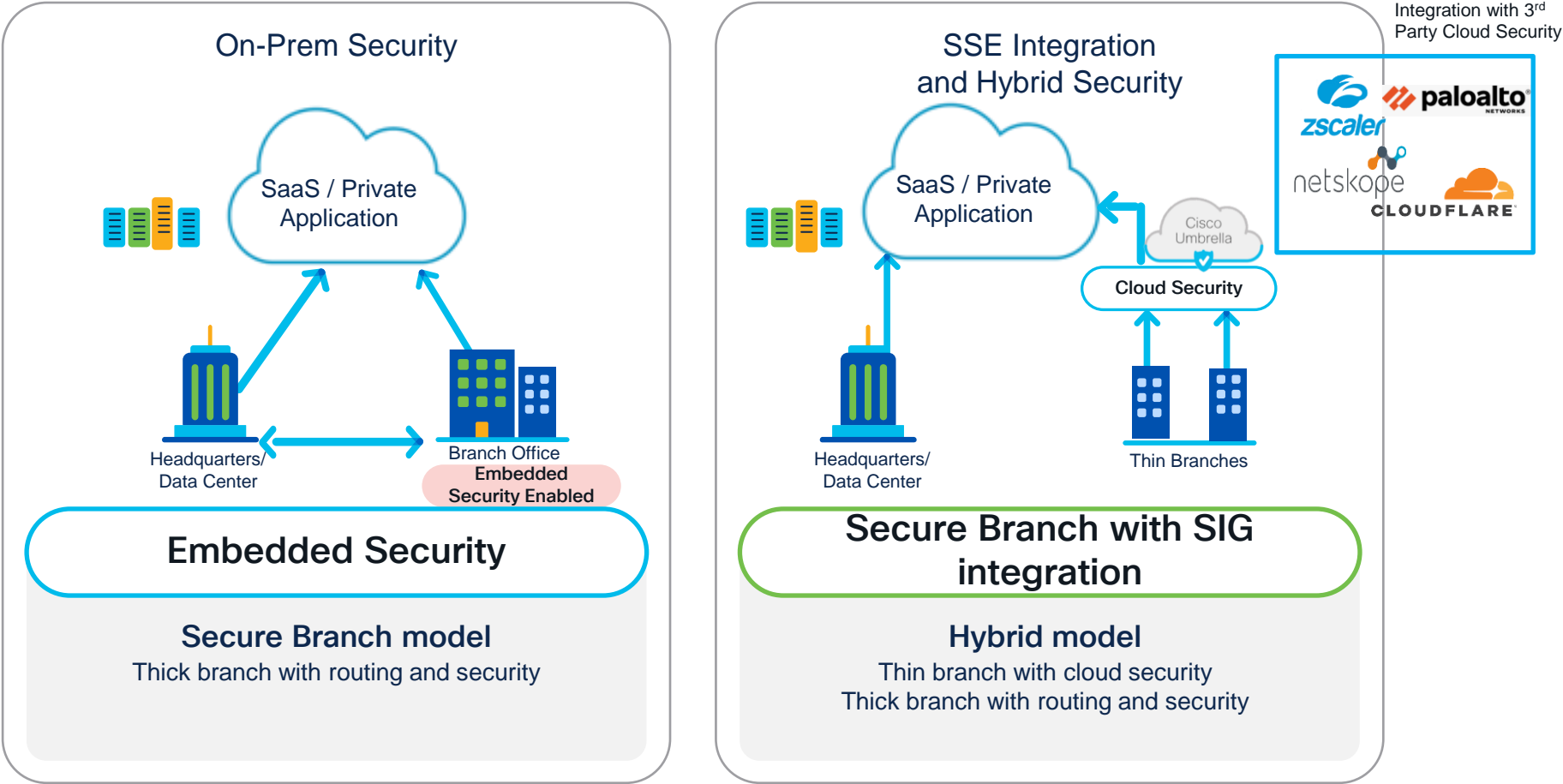
# Unified Management for your WAN



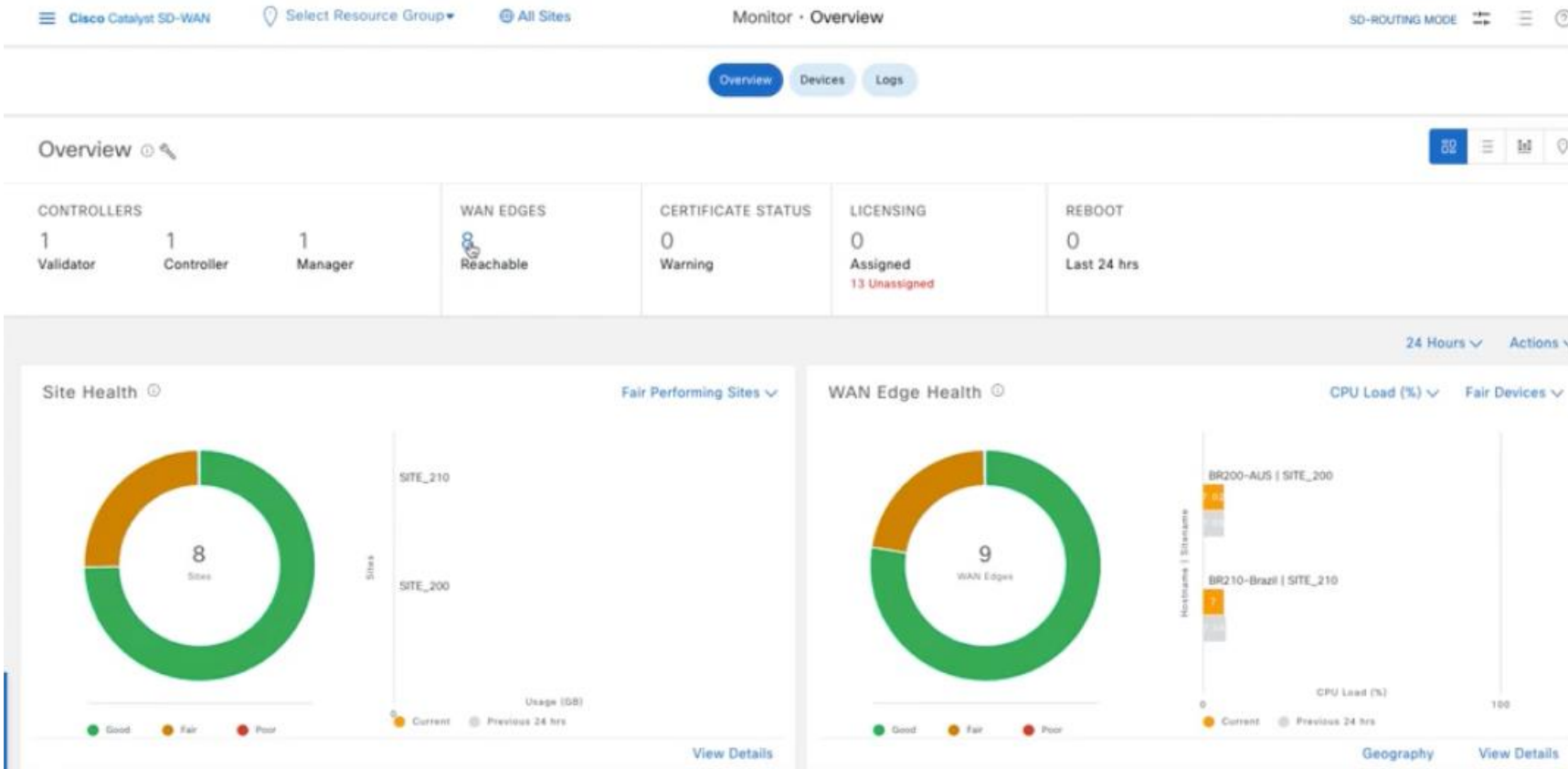
\* On Roadmap for Routing. Fully supported with SD-WAN today.



# Consistent Security Across SD-WAN and SD-Routing



# What's available with 20.12/17.12 for SD-Routing



Device onboarding



Monitoring



Troubleshooting



Lifecycle management

# SD-Routing (roadmap)

## Key takeaways

### Simplicity and Agility

Eliminate CLI and reduce potential configuration errors on individual devices

### OpEx Reduction

Avoid dispatching IT staff onsite for routine operational tasks with a single dashboard for all use cases

### Future-Ready WAN

Easily migrate to Catalyst SD-WAN with familiar UI and workflows

**Experience scalable and unified manageability for both traditional routing and SD-WAN**

**Device Lifecycle Management**

**Intelligent Monitoring**

**On-Prem Security Workflows**

**Multicloud Integration**

Nu ved DU hvad :

- SD-Routing





The bridge to possible

# Thank you

CISCO *Live!*

#CiscoLive